

Production Worksheet

Wilcom EmbroideryStudio - Designing



Design: **3**

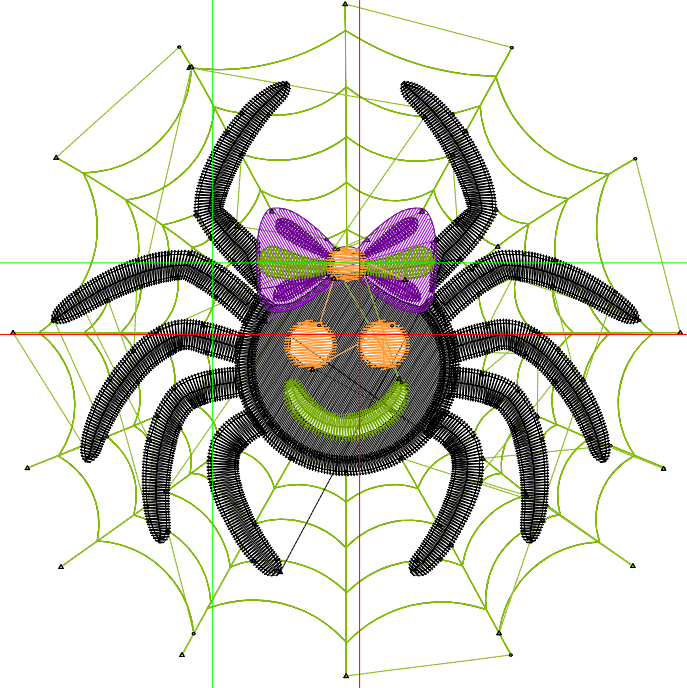
Title:

Stitches: 7,446
Height: 3.50 in
Width: 3.47 in
Colors: 6
Colorway: Colorway 1
Zoom: 1:1

Machine format: Tajima
Color changes: 5
Stops: 6
Trims: 80
Appliqués: 0
Left: 26.4 mm
Right: 61.8 mm
Up: 34.3 mm
Down: 54.6 mm
EndX: 0.76 in
EndY: -0.37 in
Area 12.16 in²
Max stitch: 8.8 mm
Min stitch: 0.1 mm
Max jump: 7.0 mm
Total thread: 125.13ft
Total bobbin: 44.03ft

Stop Sequence:

#	N#	Color	St.	Code	Name	Chart
1.	2		2,573		R129 G189 B1	
2.	8		3,645	8	Black	Default
3.	13		367	13	Purple	Default
4.	1		296		R107 G0 B143	
5.	3		360		R114 G166 B1	
6.	12		203	12	Orange	Default



Production Worksheet

Wilcom EmbroideryStudio - Designing



Design: **4**

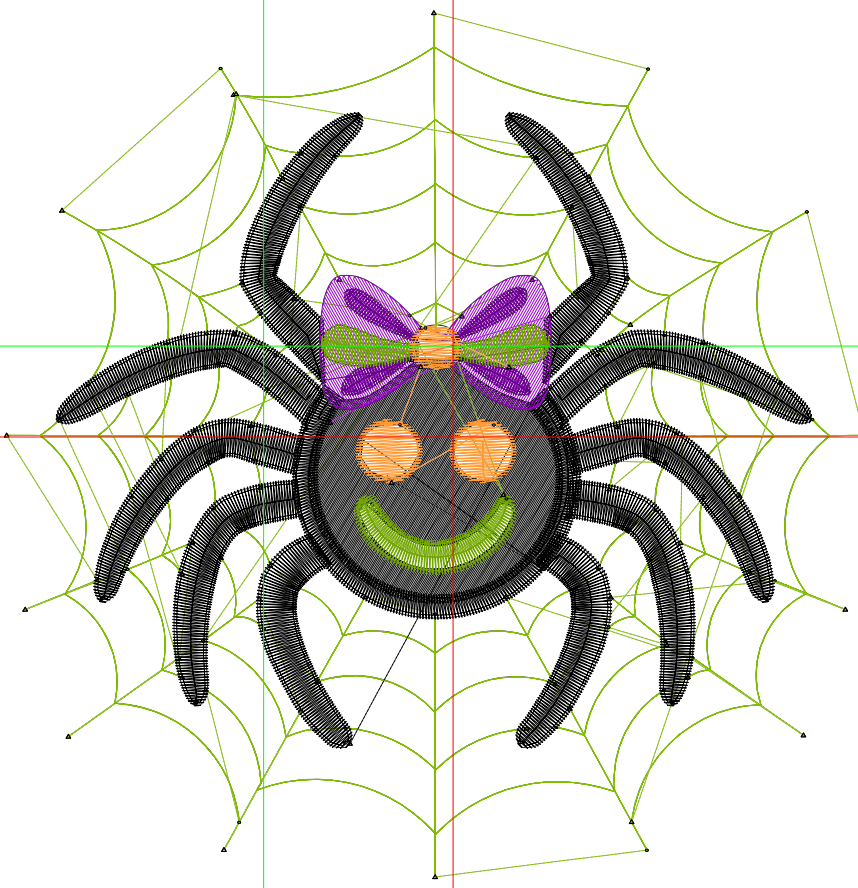
Title:

Stitches: 9,409
Height: 4.50 in
Width: 4.47 in
Colors: 6
Colorway: Colorway 1
Zoom: 1:1

Machine format: Tajima
Color changes: 5
Stops: 6
Trims: 83
Appliqués: 0
Left: 34.0 mm
Right: 79.5 mm
Up: 44.1 mm
Down: 70.2 mm
EndX: 0.99 in
EndY: -0.47 in
Area 20.10 in²
Max stitch: 11.1 mm
Min stitch: 0.2 mm
Max jump: 7.0 mm
Total thread: 175.91ft
Total bobbin: 66.49ft

Stop Sequence:

#	N#	Color	St.	Code	Name	Chart
1.	2		2,986		R129 G189 B1	
2.	8		4,832	8	Black	Default
3.	13		537	13	Purple	Default
4.	1		376		R107 G0 B143	
5.	3		436		R114 G166 B1	
6.	12		240	12	Orange	Default



Production Worksheet

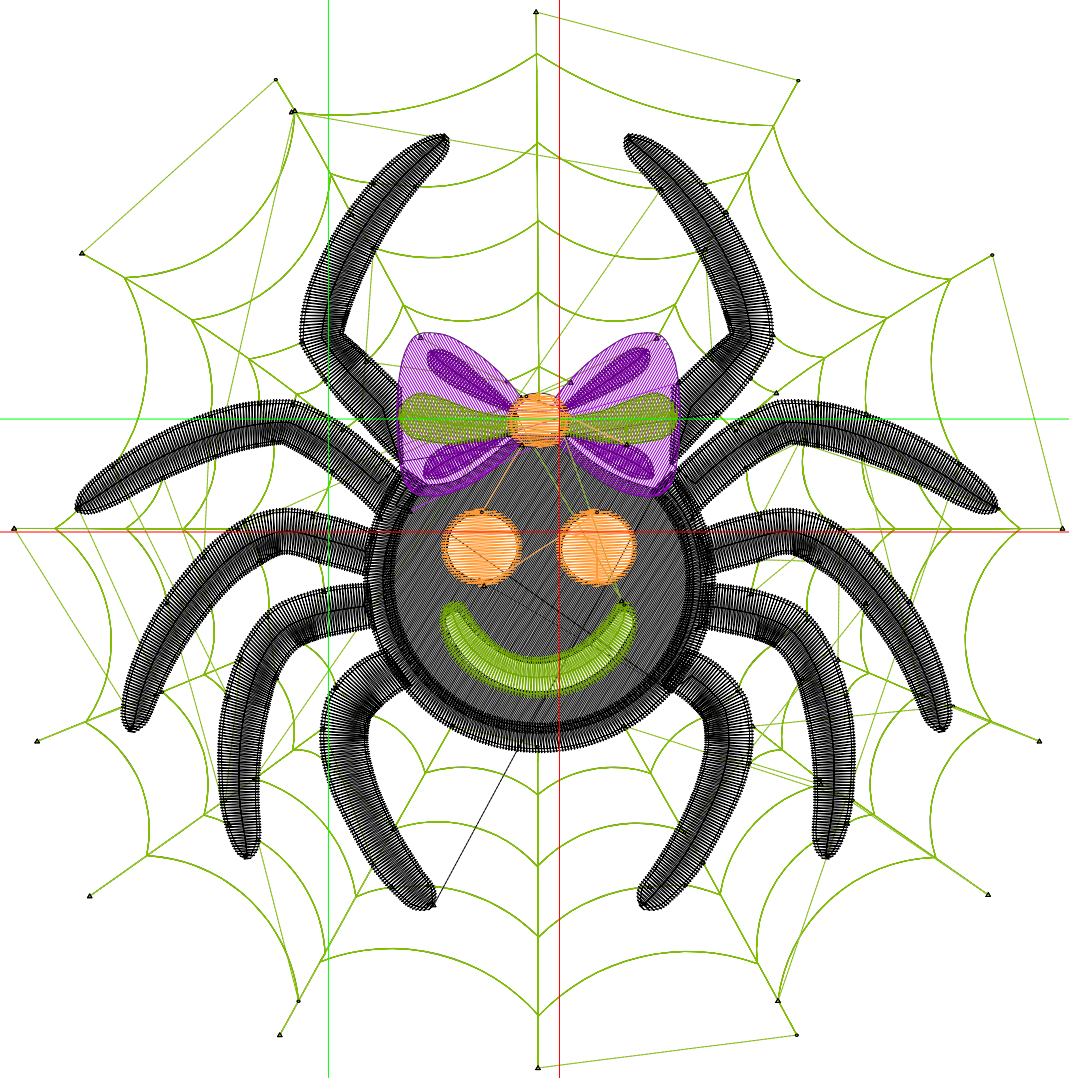
Wilcom EmbroideryStudio - Designing



Design: **5**

Title:

Stitches: 11,529
Height: 5.50 in
Width: 5.46 in
Colors: 6
Colorway: Colorway 1
Zoom: 1:1



Production Worksheet

Wilcom EmbroideryStudio - Designing



Design: **5**

Title:

Stitches: 11,529
 Height: 5.50 in
 Width: 5.46 in
 Colors: 6
 Colorway: Colorway 1
 Zoom: 1:1

Machine format: Tajima
 Color changes: 5
 Stops: 6
 Trims: 83
 Appliqués: 0
 Left: 41.6 mm
 Right: 97.1 mm
 Up: 53.9 mm
 Down: 85.8 mm
 EndX: 1.20 in
 EndY: -0.59 in
 Area 30.03 in²
 Max stitch: 10.7 mm
 Min stitch: 0.0 mm
 Max jump: 7.0 mm
 Total thread: 235.35ft
 Total bobbin: 93.47ft

Stop Sequence:

#	N#	Color	St.	Code	Name	Chart
1.	2		3,466		R129 G189 B1	
2.	8		6,087	8	Black	Default
3.	13		741	13	Purple	Default
4.	1		444		R107 G0 B143	
5.	3		521		R114 G166 B1	
6.	12		268	12	Orange	Default

Production Worksheet

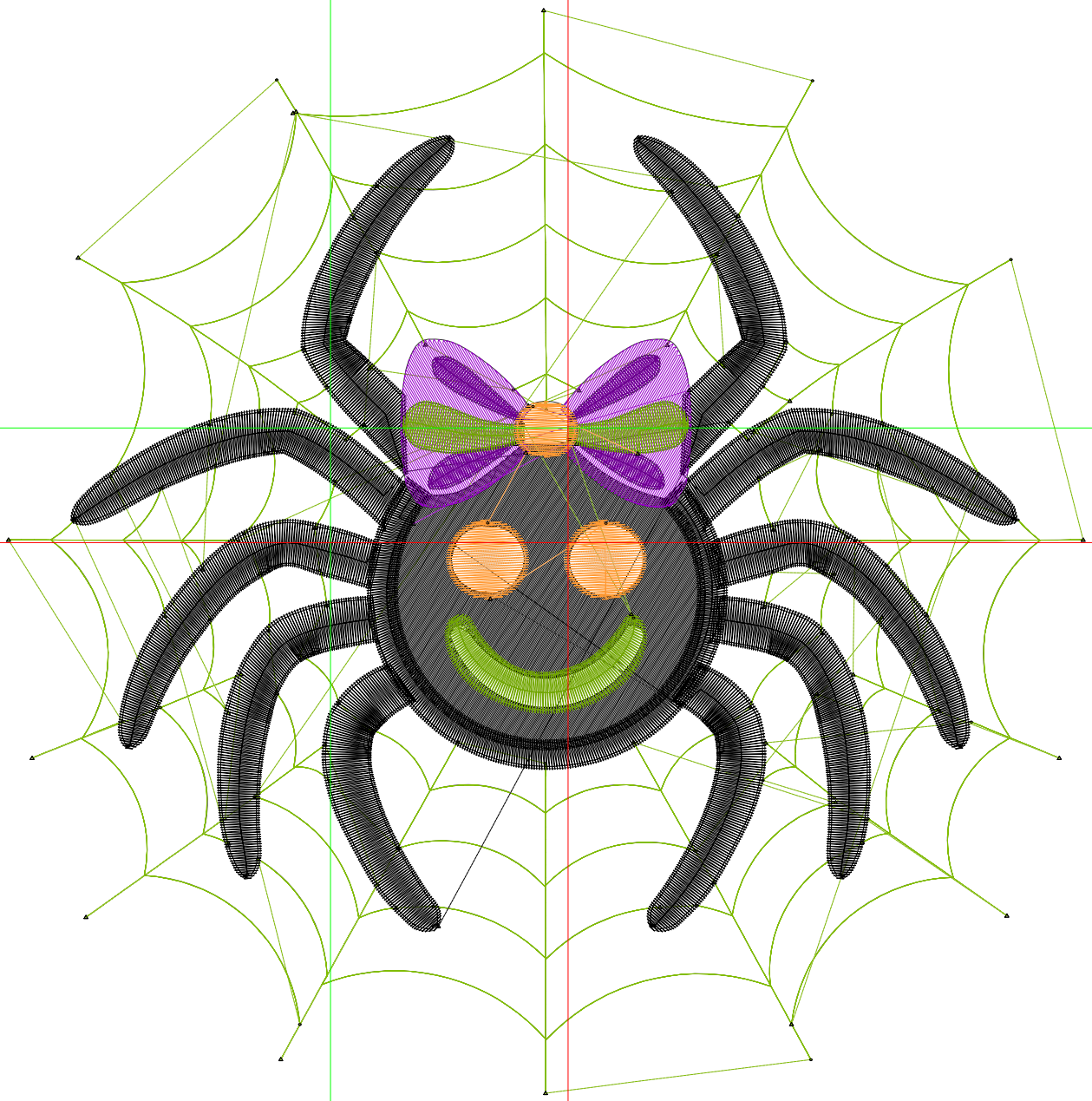
Wilcom EmbroideryStudio - Designing



Design: **6**

Title:

Stitches: 13,751
Height: 6.50 in
Width: 6.45 in
Colors: 6
Colorway: Colorway 1
Zoom: 1:1



Production Worksheet

Wilcom EmbroideryStudio - Designing



Design: **6**

Title:

Stitches: 13,751
 Height: 6.50 in
 Width: 6.45 in
 Colors: 6
 Colorway: Colorway 1
 Zoom: 1:1

Machine format: Tajima
 Color changes: 5
 Stops: 6
 Trims: 83
 Appliqués: 0
 Left: 49.1 mm
 Right: 114.8 mm
 Up: 63.7 mm
 Down: 101.4 mm
 EndX: 1.43 in
 EndY: -0.69 in
 Area 41.94 in²
 Max stitch: 12.1 mm
 Min stitch: 0.0 mm
 Max jump: 7.0 mm
 Total thread: 302.98ft
 Total bobbin: 124.91ft

Stop Sequence:

#	N#	Color	St.	Code	Name	Chart
1.	2		3,901		R129 G189 B1	
2.	8		7,435	8	Black	Default
3.	13		963	13	Purple	Default
4.	1		508		R107 G0 B143	
5.	3		600		R114 G166 B1	
6.	12		342	12	Orange	Default

Production Worksheet

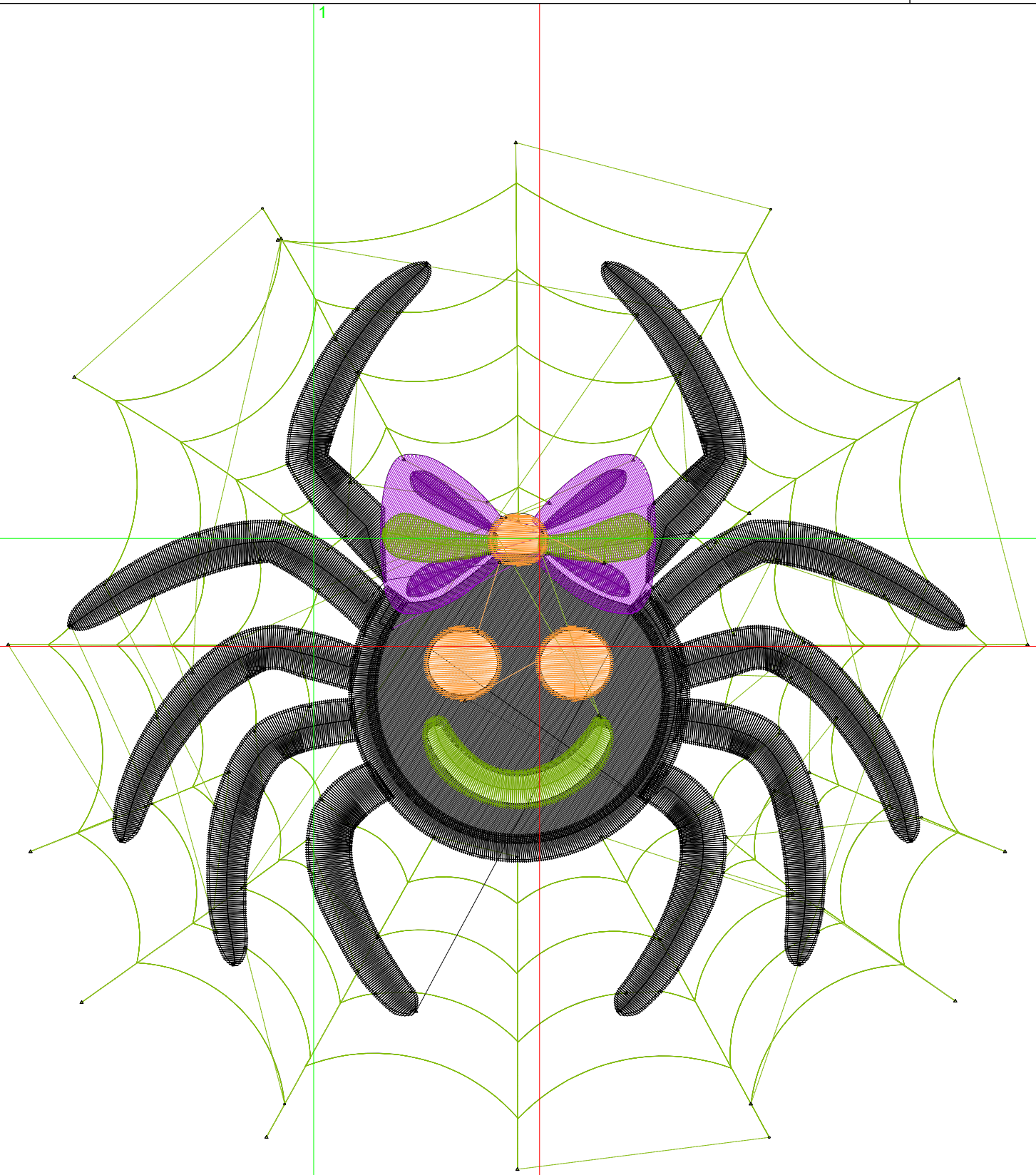
Wilcom EmbroideryStudio - Designing



Design: **7**

Title:

Stitches: 16,178
Height: 7.50 in
Width: 7.45 in
Colors: 6
Colorway: Colorway 1
Zoom: 1:1



Production Worksheet

Wilcom EmbroideryStudio - Designing



Design: **7**

Title:

Stitches: 16,178
 Height: 7.50 in
 Width: 7.45 in
 Colors: 6
 Colorway: Colorway 1
 Zoom: 1:1

Machine format: Tajima
 Color changes: 5
 Stops: 6
 Trims: 85
 Appliqués: 0
 Left: 56.7 mm
 Right: 132.5 mm
 Up: 73.4 mm
 Down: 117.1 mm
 EndX: 1.65 in
 EndY: -0.79 in
 Area 55.84 in²
 Max stitch: 12.1 mm
 Min stitch: 0.0 mm
 Max jump: 7.0 mm
 Total thread: 379.45ft
 Total bobbin: 160.78ft

Stop Sequence:

#	N#	Color	St.	Code	Name	Chart
1.	2		4,384		R129 G189 B1	
2.	8		8,840	8	Black	Default
3.	13		1,218	13	Purple	Default
4.	1		578		R107 G0 B143	
5.	3		689		R114 G166 B1	
6.	12		467	12	Orange	Default