

# Production Worksheet

Wilcom EmbroideryStudio - Designing



Design: **3**

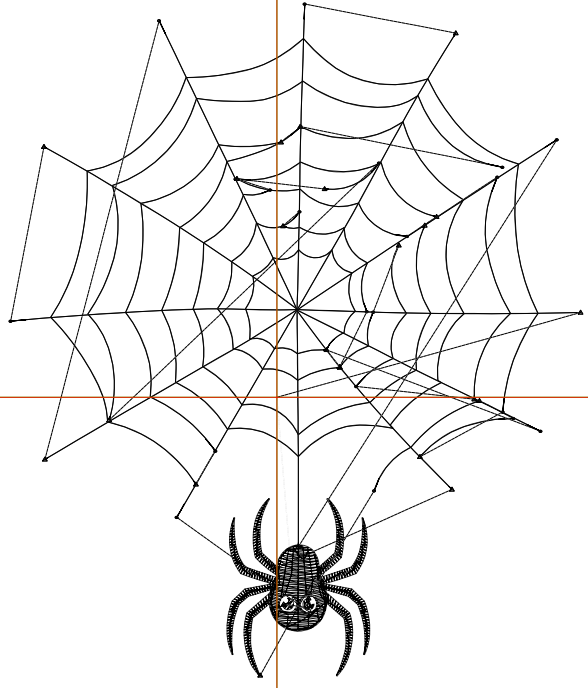
Title:

Stitches: 2,019  
Height: 3.50 in  
Width: 2.97 in  
Colors: 2  
Colorway: Colorway 1  
Zoom: 1:1

Machine format: Tajima  
Color changes: 1  
Stops: 2  
Trims: 26  
Appliqués: 0  
Left: 35.2 mm  
Right: 40.2 mm  
Up: 52.0 mm  
Down: 36.9 mm  
EndX: 0.00 in  
EndY: 0.00 in  
Area 10.39 in<sup>2</sup>  
Max stitch: 6.7 mm  
Min stitch: 0.0 mm  
Max jump: 6.7 mm  
Total thread: 25.50ft  
Total bobbin: 6.87ft

Stop Sequence:

#	N#	Color	St.	Code	Name	Chart
1.	9		83	9	White	Default
2.	8		1,934	8	Black	Default



# Production Worksheet

Wilcom EmbroideryStudio - Designing



Design: **4**

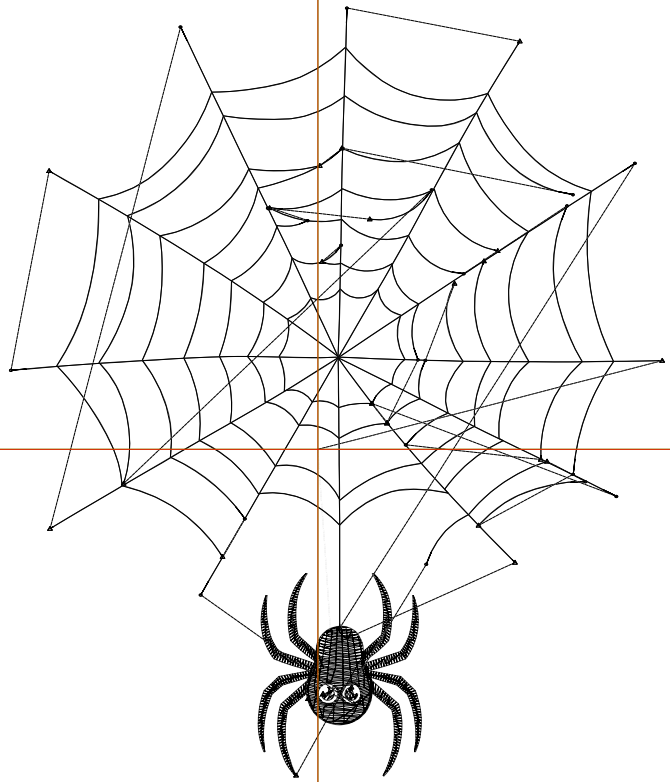
Title:

Stitches: 2,295  
 Height: 4.00 in  
 Width: 3.39 in  
 Colors: 2  
 Colorway: Colorway 1  
 Zoom: 1:1

Machine format: Tajima  
 Color changes: 1  
 Stops: 2  
 Trims: 27  
 Appliqués: 0  
 Left: 40.6 mm  
 Right: 45.5 mm  
 Up: 58.4 mm  
 Down: 43.2 mm  
 EndX: 0.00 in  
 EndY: 0.00 in  
 Area: 13.57 in<sup>2</sup>  
 Max stitch: 6.8 mm  
 Min stitch: 0.1 mm  
 Max jump: 6.8 mm  
 Total thread: 29.64ft  
 Total bobbin: 8.25ft

Stop Sequence:

#	N#	Color	St.	Code	Name	Chart
1.	9		96	9	White	Default
2.	8		2,197	8	Black	Default



# Production Worksheet

Wilcom EmbroideryStudio - Designing



Design: **4**

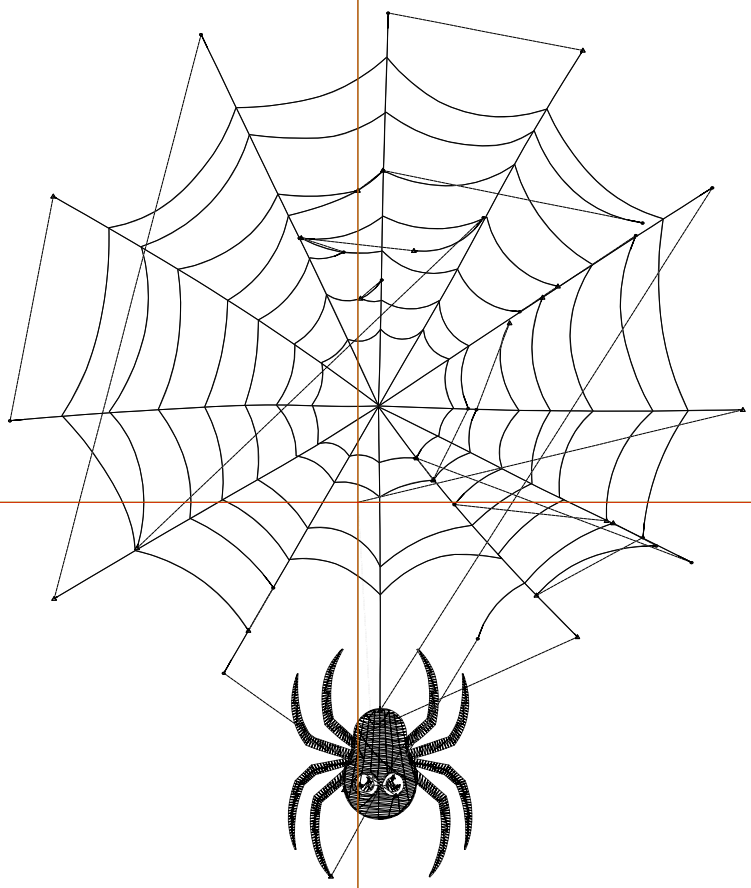
Title:

Stitches: 2,563  
 Height: 4.50 in  
 Width: 3.82 in  
 Colors: 2  
 Colorway: Colorway 1  
 Zoom: 1:1

Machine format: Tajima  
 Color changes: 1  
 Stops: 2  
 Trims: 27  
 Appliqués: 0  
 Left: 46.0 mm  
 Right: 50.9 mm  
 Up: 64.7 mm  
 Down: 49.6 mm  
 EndX: 0.00 in  
 EndY: 0.00 in  
 Area: 17.17 in<sup>2</sup>  
 Max stitch: 6.9 mm  
 Min stitch: 0.0 mm  
 Max jump: 6.9 mm  
 Total thread: 33.74ft  
 Total bobbin: 9.64ft

Stop Sequence:

#	N#	Color	St.	Code	Name	Chart
1.	9		114	9	White	Default
2.	8		2,447	8	Black	Default



# Production Worksheet

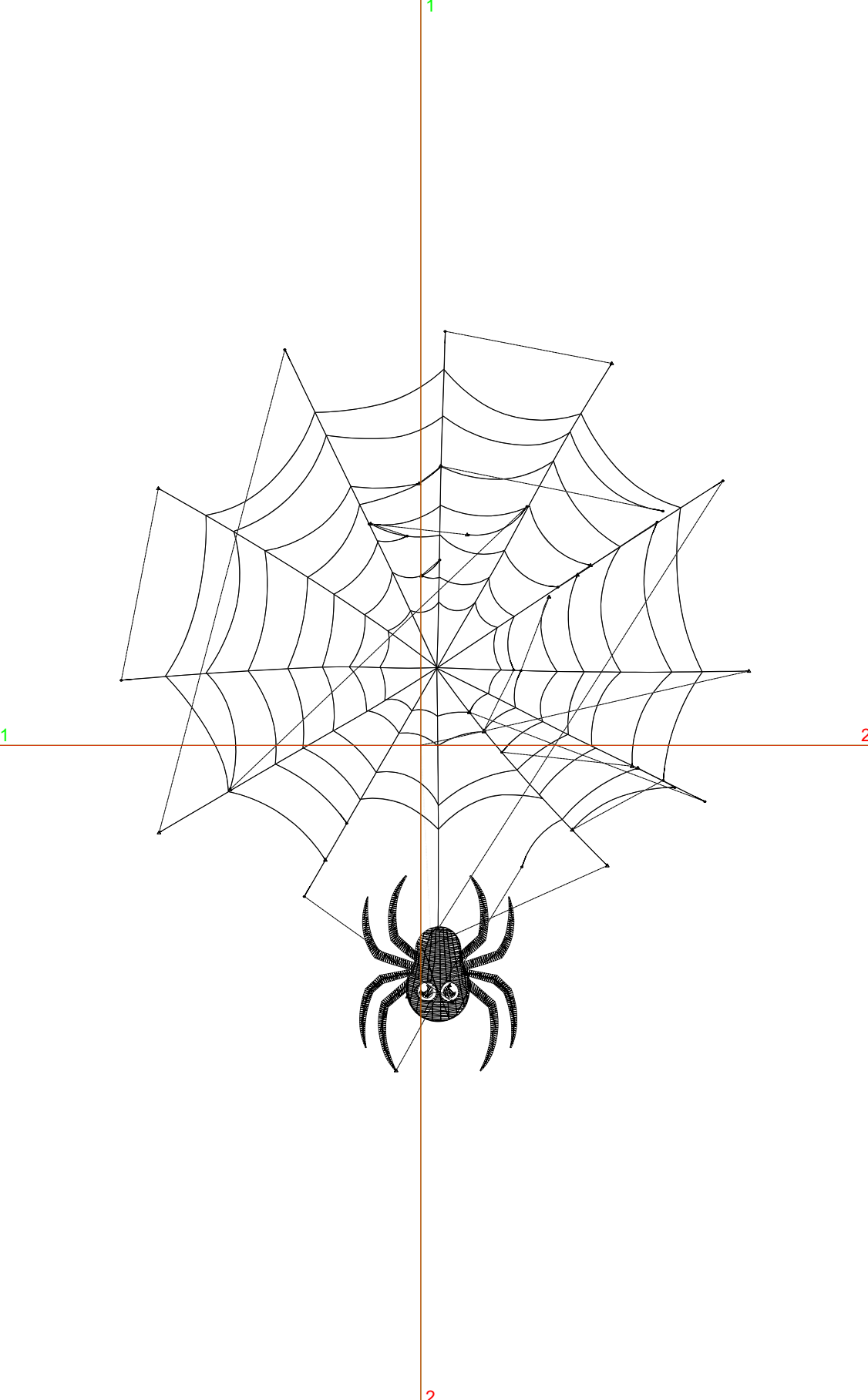
Wilcom EmbroideryStudio - Designing



Design: **5**

Title:

Stitches: 2,842  
 Height: 5.00 in  
 Width: 4.24 in  
 Colors: 2  
 Colorway: Colorway 1  
 Zoom: 1:1



Machine format: Tajima  
 Color changes: 1  
 Stops: 2  
 Trims: 27  
 Appliqués: 0  
 Left: 51.4 mm  
 Right: 56.3 mm  
 Up: 71.1 mm  
 Down: 55.9 mm  
 EndX: 0.00 in  
 EndY: 0.00 in  
 Area: 21.20 in<sup>2</sup>  
 Max stitch: 7.0 mm  
 Min stitch: 0.1 mm  
 Max jump: 7.0 mm  
 Total thread: 38.23ft  
 Total bobbin: 11.22ft

Stop Sequence:

#	N#	Color	St.	Code	Name	Chart
1.	9		134	9	White	Default
2.	8		2,706	8	Black	Default

# Production Worksheet

Wilcom EmbroideryStudio - Designing



Design: **5**

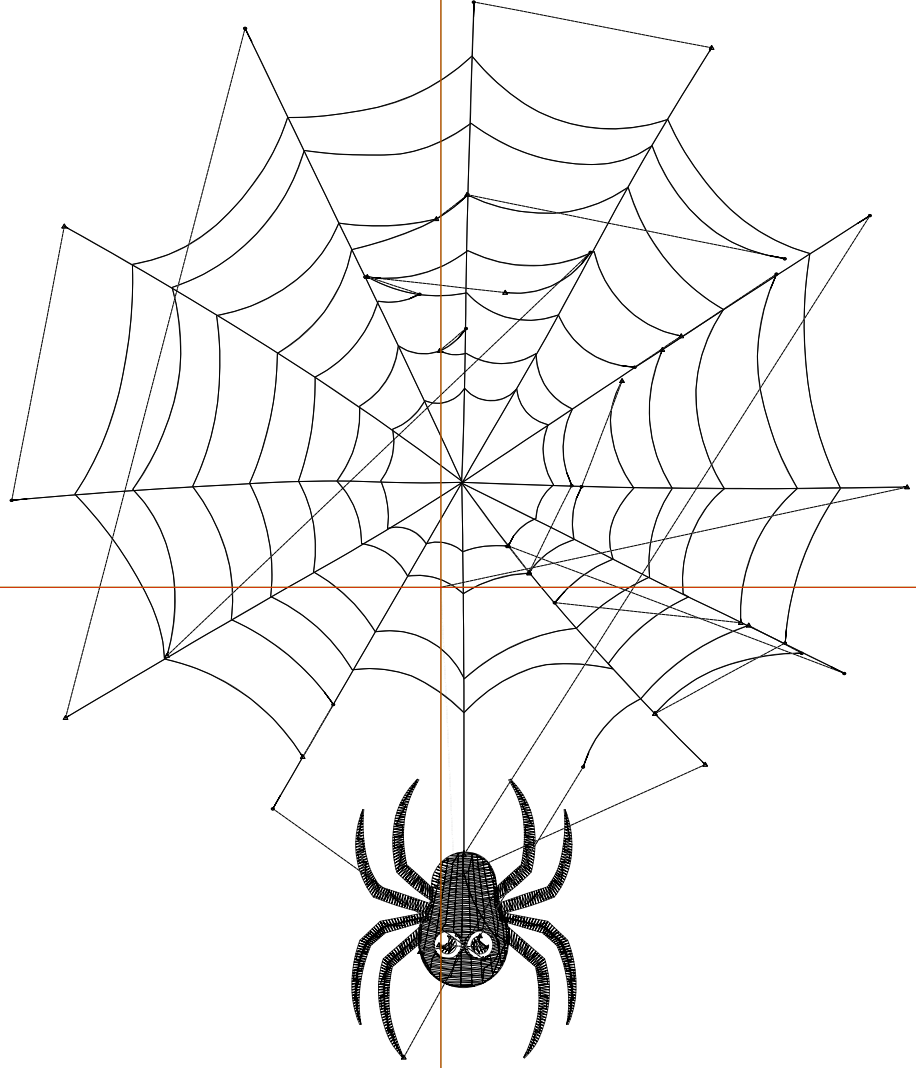
Title:

Stitches: 3,106  
 Height: 5.50 in  
 Width: 4.66 in  
 Colors: 2  
 Colorway: Colorway 1  
 Zoom: 1:1

Machine format: Tajima  
 Color changes: 1  
 Stops: 2  
 Trims: 27  
 Appliqués: 0  
 Left: 56.8 mm  
 Right: 61.7 mm  
 Up: 77.4 mm  
 Down: 62.3 mm  
 EndX: 0.00 in  
 EndY: 0.00 in  
 Area: 25.65 in<sup>2</sup>  
 Max stitch: 7.0 mm  
 Min stitch: 0.1 mm  
 Max jump: 7.0 mm  
 Total thread: 42.61ft  
 Total bobbin: 12.78ft

Stop Sequence:

#	N#	Color	St.	Code	Name	Chart
1.	9		145	9	White	Default
2.	8		2,959	8	Black	Default



# Production Worksheet

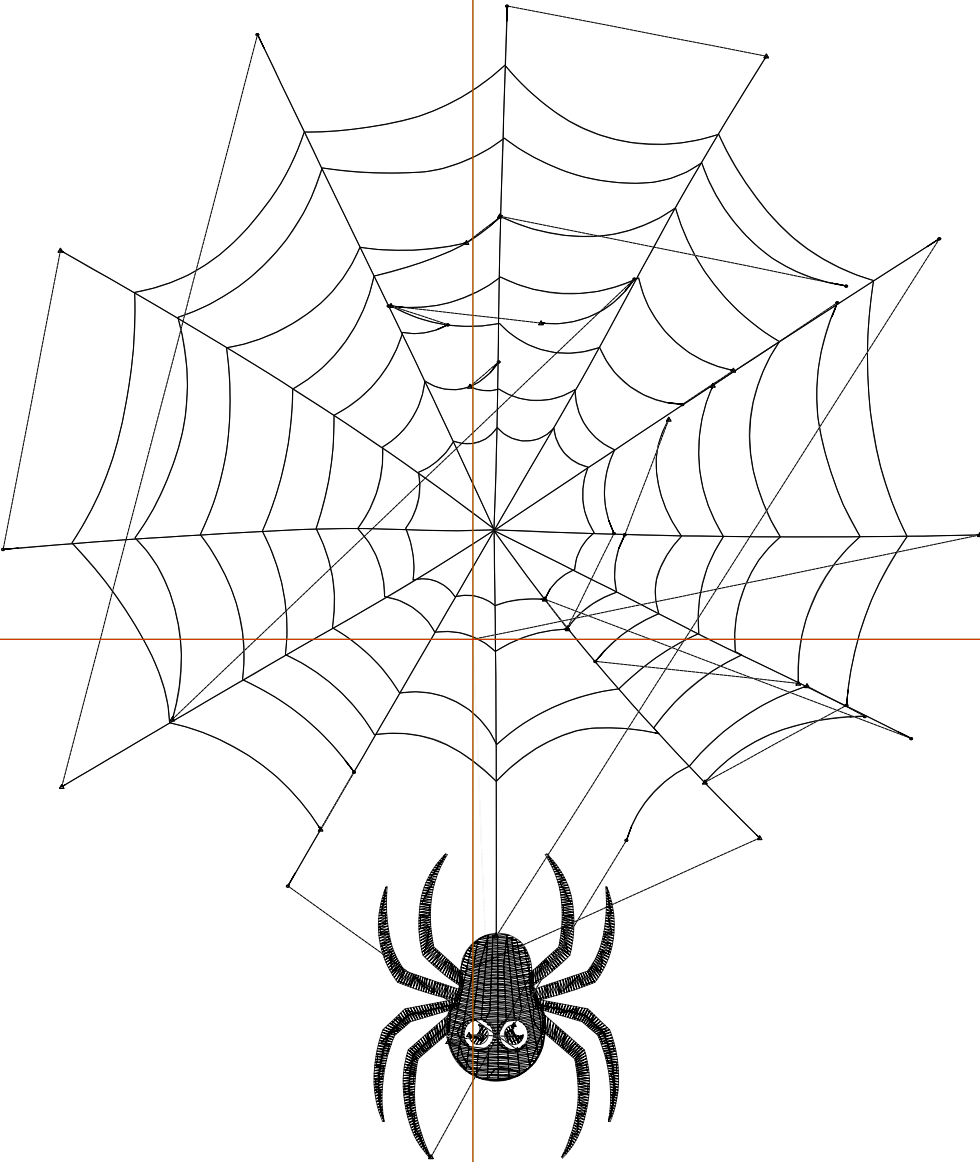
Wilcom EmbroideryStudio - Designing



Design: **6**

Title:

Stitches: 3,401  
 Height: 6.00 in  
 Width: 5.09 in  
 Colors: 2  
 Colorway: Colorway 1  
 Zoom: 1:1



Machine format: Tajima  
 Color changes: 1  
 Stops: 2  
 Trims: 27  
 Appliqués: 0  
 Left: 62.2 mm  
 Right: 67.1 mm  
 Up: 83.8 mm  
 Down: 68.6 mm  
 EndX: 0.00 in  
 EndY: 0.00 in  
 Area: 30.53 in<sup>2</sup>  
 Max stitch: 6.9 mm  
 Min stitch: 0.1 mm  
 Max jump: 6.9 mm  
 Total thread: 47.49ft  
 Total bobbin: 14.53ft

Stop Sequence:

#	N#	Color	St.	Code	Name	Chart
1.	9		165	9	White	Default
2.	8		3,234	8	Black	Default

# Production Worksheet

Wilcom EmbroideryStudio - Designing



Design: **6**

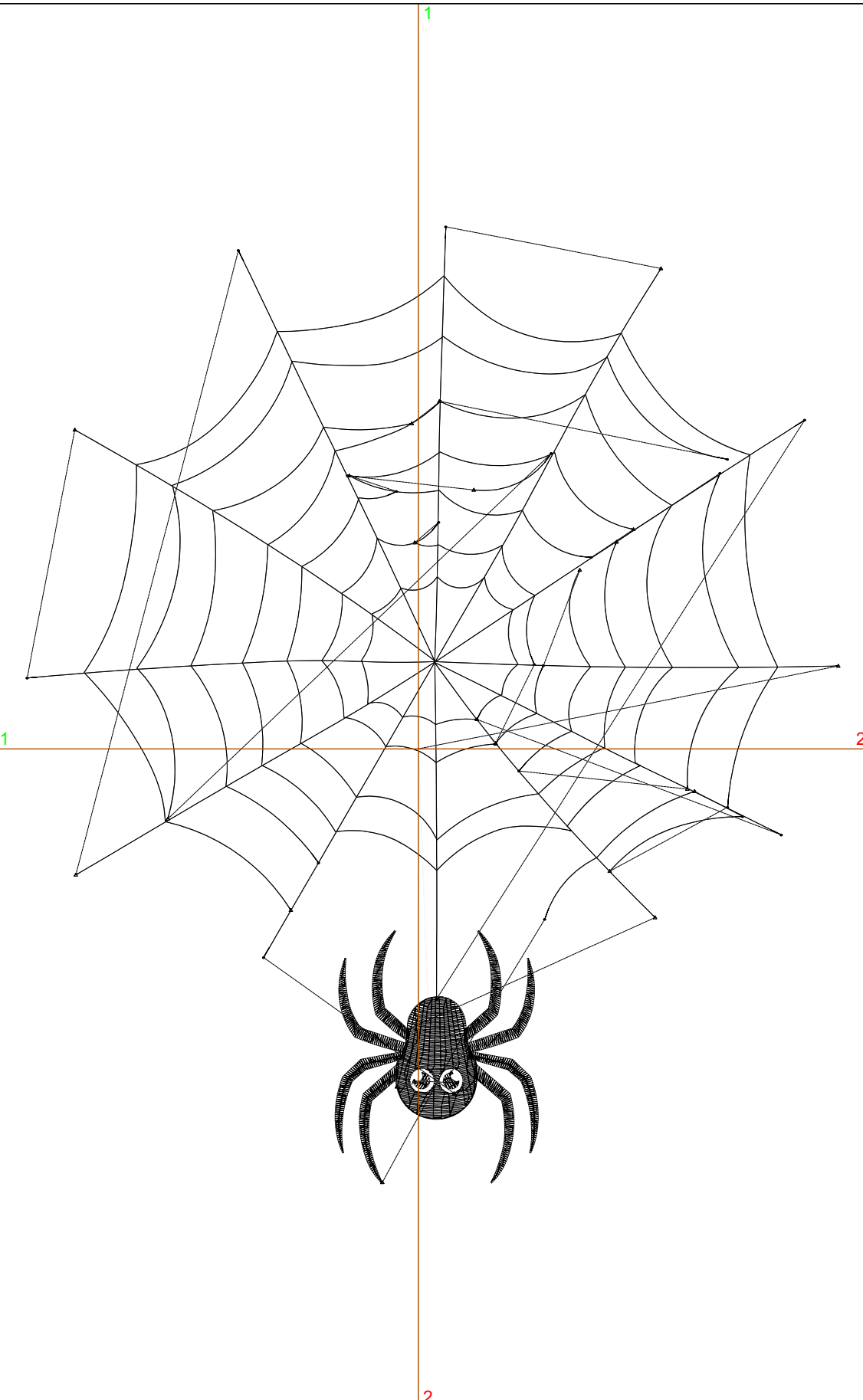
Title:

Stitches: 3,693  
 Height: 6.50 in  
 Width: 5.51 in  
 Colors: 2  
 Colorway: Colorway 1  
 Zoom: 1:1

Machine format: Tajima  
 Color changes: 1  
 Stops: 2  
 Trims: 27  
 Appliqués: 0  
 Left: 67.5 mm  
 Right: 72.5 mm  
 Up: 90.1 mm  
 Down: 75.0 mm  
 EndX: 0.00 in  
 EndY: 0.00 in  
 Area: 35.83 in<sup>2</sup>  
 Max stitch: 7.0 mm  
 Min stitch: 0.0 mm  
 Max jump: 7.0 mm  
 Total thread: 52.40ft  
 Total bobbin: 16.30ft

Stop Sequence:

#	N#	Color	St.	Code	Name	Chart
1.	9		176	9	White	Default
2.	8		3,515	8	Black	Default



# Production Worksheet

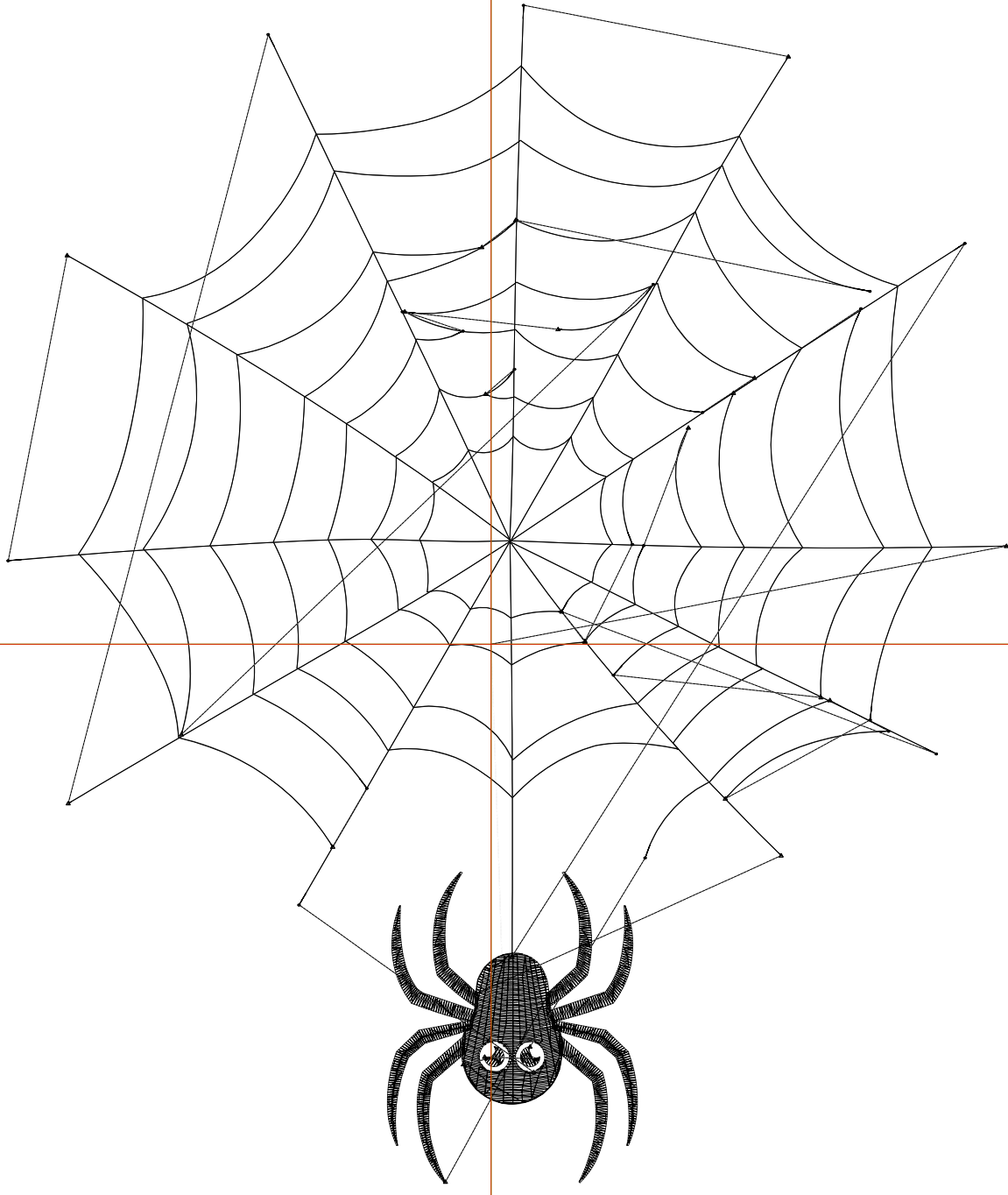
Wilcom EmbroideryStudio - Designing



Design: **7**

Title:

Stitches: 3,970  
Height: 7.00 in  
Width: 5.94 in  
Colors: 2  
Colorway: Colorway 1  
Zoom: 1:1



1

1

2

2

# Production Worksheet

Wilcom EmbroideryStudio - Designing



Design: **7**

Title:

Stitches: 3,970  
 Height: 7.00 in  
 Width: 5.94 in  
 Colors: 2  
 Colorway: Colorway 1  
 Zoom: 1:1

Machine format: Tajima  
 Color changes: 1  
 Stops: 2  
 Trims: 27  
 Appliqués: 0  
 Left: 72.9 mm  
 Right: 77.8 mm  
 Up: 96.5 mm  
 Down: 81.3 mm  
 EndX: 0.00 in  
 EndY: 0.00 in  
 Area 41.55 in<sup>2</sup>  
 Max stitch: 6.8 mm  
 Min stitch: 0.0 mm  
 Max jump: 6.8 mm  
 Total thread: 57.41ft  
 Total bobbin: 18.20ft

Stop Sequence:

#	N#	Color	St.	Code	Name	Chart
1.	9		194	9	White	Default
2.	8		3,774	8	Black	Default

# Production Worksheet

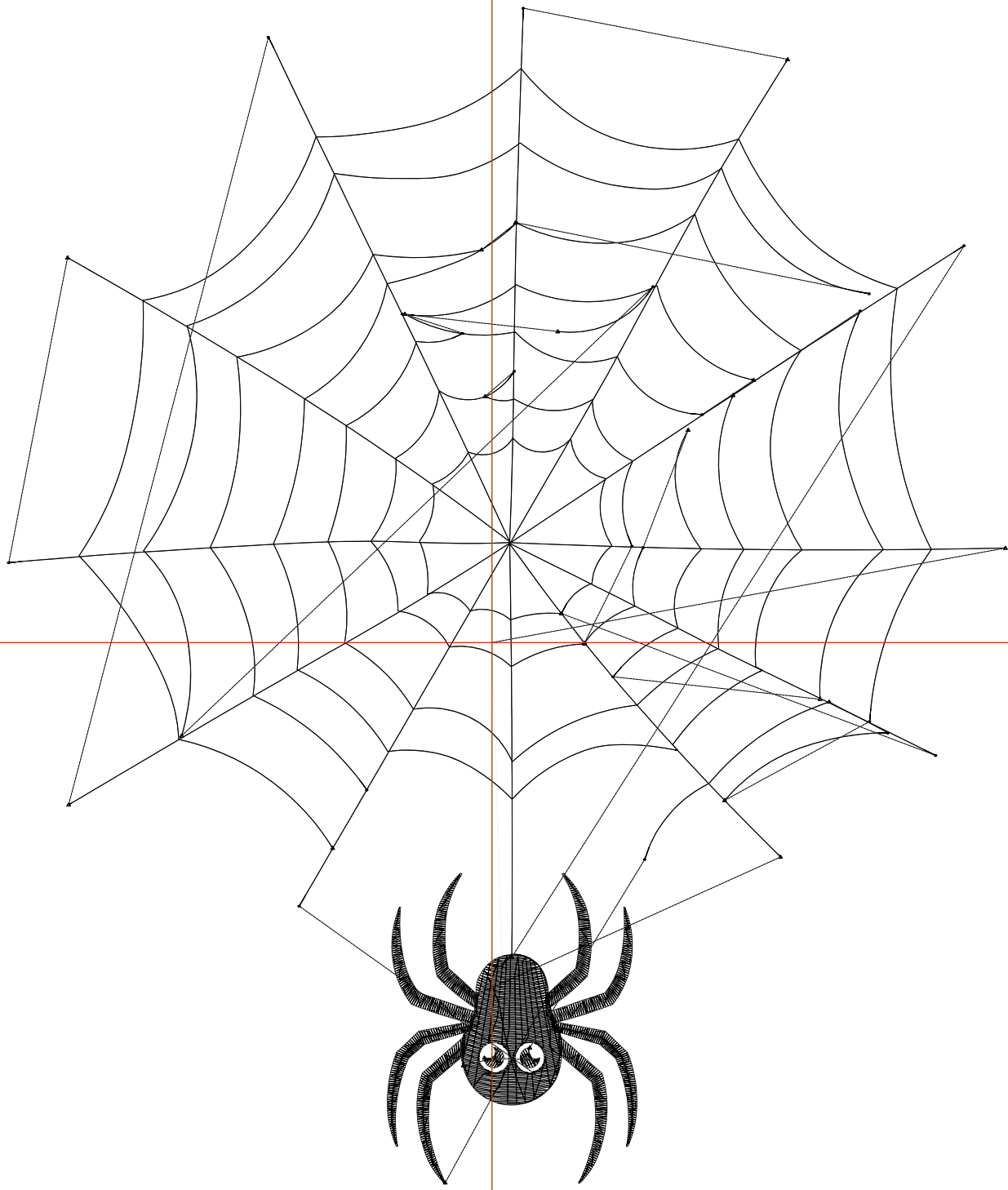
Wilcom EmbroideryStudio - Designing



Design: **7**

Title:

Stitches: 4,275  
Height: 7.50 in  
Width: 6.36 in  
Colors: 2  
Colorway: Colorway 1  
Zoom: 1:1



# Production Worksheet

Wilcom EmbroideryStudio - Designing



Design: **7**

Title:

Stitches: 4,275  
 Height: 7.50 in  
 Width: 6.36 in  
 Colors: 2  
 Colorway: Colorway 1  
 Zoom: 1:1

Machine format: Tajima  
 Color changes: 1  
 Stops: 2  
 Trims: 27  
 Appliqués: 0  
 Left: 78.3 mm  
 Right: 83.2 mm  
 Up: 102.8 mm  
 Down: 87.7 mm  
 EndX: 0.00 in  
 EndY: 0.00 in  
 Area 47.70 in<sup>2</sup>  
 Max stitch: 6.9 mm  
 Min stitch: 0.0 mm  
 Max jump: 7.0 mm  
 Total thread: 62.76ft  
 Total bobbin: 20.18ft

Stop Sequence:

#	N#	Color	St.	Code	Name	Chart
1.	9		213	9	White	Default
2.	8		4,060	8	Black	Default