

Production Worksheet

Wilcom EmbroideryStudio - Designing



Design: **3**

Title:

Stitches: 13,633

Height: 3.50 in

Width: 2.98 in

Colors: 19

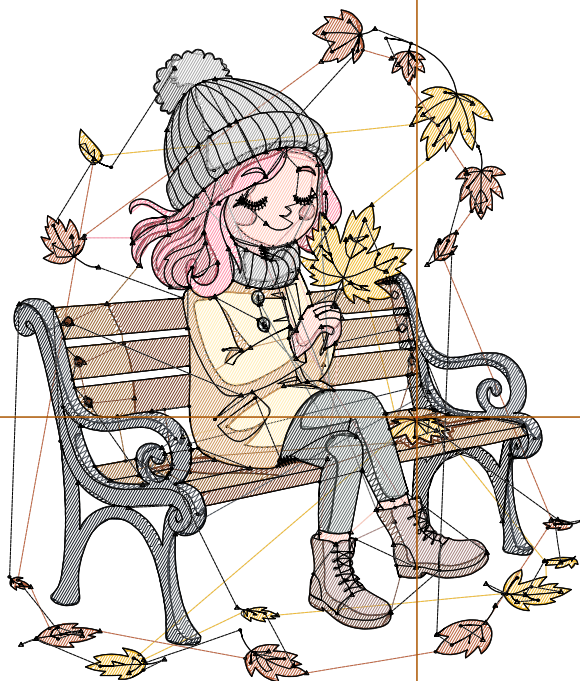
Colorway: Colorway 1

Zoom: 1:1

Machine format: Tajima
 Color changes: 18
 Stops: 19
 Trims: 198
 Appliqués: 0
 Left: 53.9 mm
 Right: 21.8 mm
 Up: 53.9 mm
 Down: 35.0 mm
 EndX: 0.00 in
 EndY: 0.00 in
 Area: 10.43 in²
 Max stitch: 7.1 mm
 Min stitch: 0.0 mm
 Max jump: 6.9 mm
 Total thread: 164.92ft
 Total bobbin: 41.02ft

Stop Sequence:

#	N#	Color	St.	Code	Name	Chart
1.	1		848		R240 G186 B49	
2.	2		700		R189 G98 B62	
3.	3		393		R255 G146 B171	
4.	4		371		R186 G83 B95	
5.	14		1,066	14	Brown	Default
6.	5		877		R120 G63 B35	
7.	7		1,065		R25 G31 B38	
8.	9		872		R75 G81 B89	
9.	6		448		R255 G237 B182	
10.	10		488		R207 G152 B93	
11.	12		302		R255 G200 B185	
12.	11		249		R217 G152 B151	
13.	13		349		R107 G117 B115	
14.	15		208		R54 G59 B58	
15.	16		283		R166 G132 B128	
16.	17		284		R120 G85 B71	
17.	18		438	18	Grey	Default
18.	19		406		R171 G171 B171	
19.	8		3,984	8	Black	Default



Production Worksheet

Wilcom EmbroideryStudio - Designing



Design: **4**

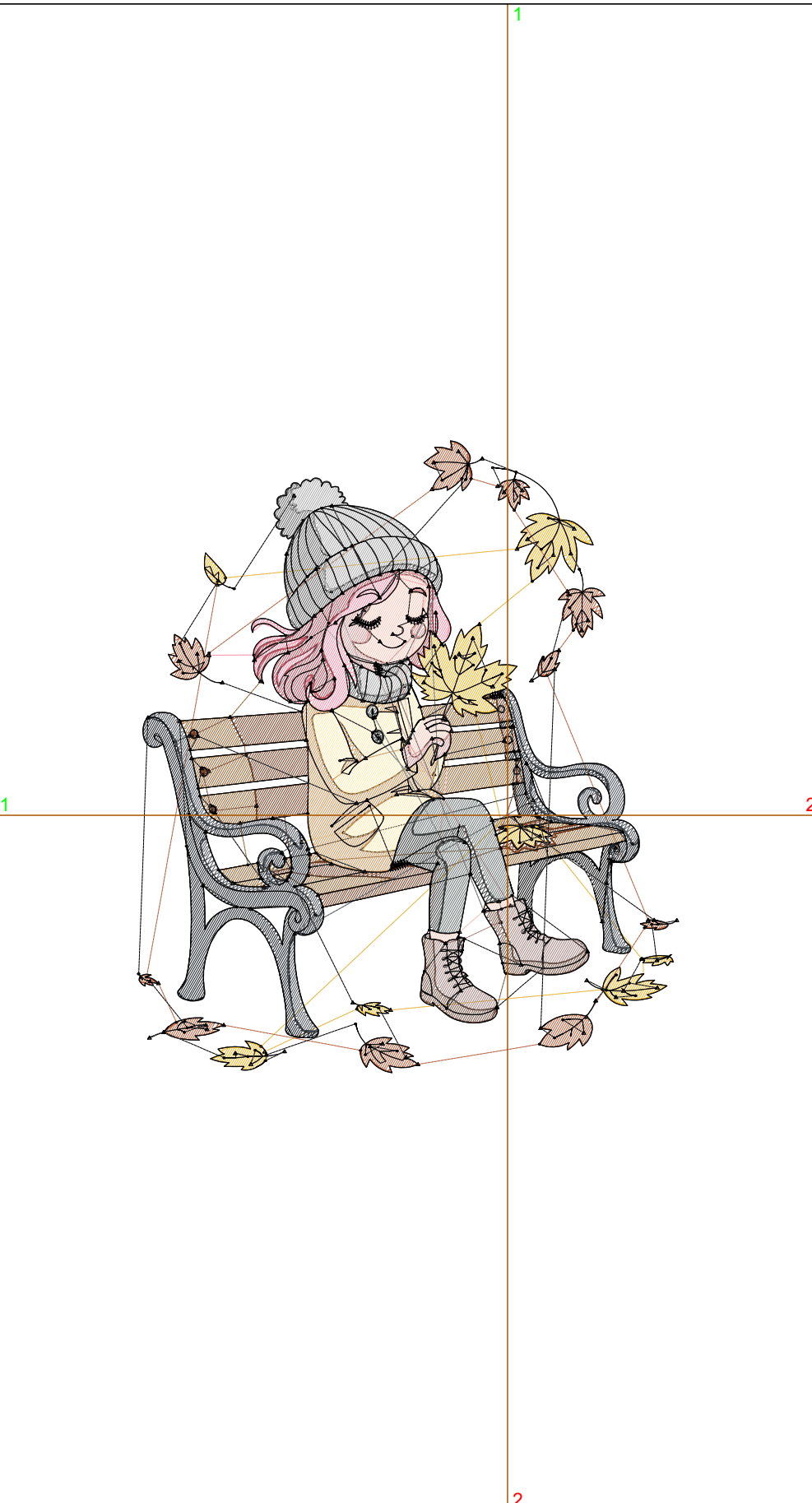
Title:

Stitches: 15,768
 Height: 4.00 in
 Width: 3.41 in
 Colors: 19
 Colorway: Colorway 1
 Zoom: 1:1

Machine format: Tajima
 Color changes: 18
 Stops: 19
 Trims: 214
 Appliqués: 0
 Left: 59.3 mm
 Right: 27.2 mm
 Up: 60.2 mm
 Down: 41.4 mm
 EndX: 0.00 in
 EndY: 0.00 in
 Area: 13.63 in²
 Max stitch: 8.1 mm
 Min stitch: 0.0 mm
 Max jump: 6.9 mm
 Total thread: 195.53ft
 Total bobbin: 50.86ft

Stop Sequence:

#	N#	Color	St.	Code	Name	Chart
1.	1		995		R240 G186 B49	
2.	2		830		R189 G98 B62	
3.	3		465		R255 G146 B171	
4.	4		428		R186 G83 B95	
5.	14		1,255	14	Brown	Default
6.	5		1,036		R120 G63 B35	
7.	7		1,300		R25 G31 B38	
8.	9		1,039		R75 G81 B89	
9.	6		524		R255 G237 B182	
10.	10		575		R207 G152 B93	
11.	12		352		R255 G200 B185	
12.	11		288		R217 G152 B151	
13.	13		427		R107 G117 B115	
14.	15		265		R54 G59 B58	
15.	16		326		R166 G132 B128	
16.	17		331		R120 G85 B71	
17.	18		534	18	Grey	Default
18.	19		477		R171 G171 B171	
19.	8		4,319	8	Black	Default



Production Worksheet

Wilcom EmbroideryStudio - Designing



Design: **4**

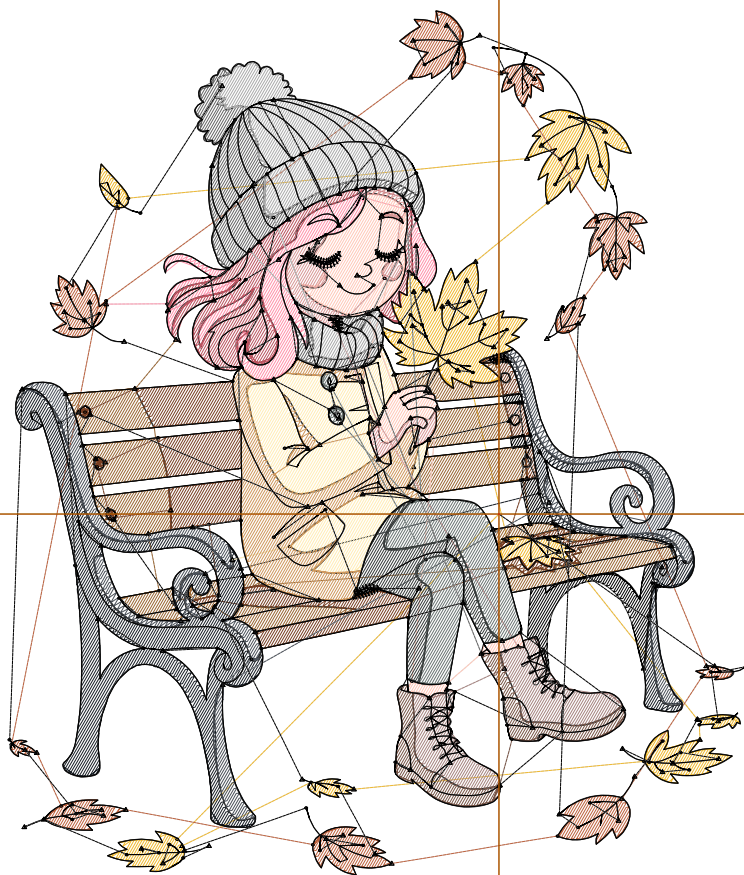
Title:

Stitches: 17,891
 Height: 4.50 in
 Width: 3.83 in
 Colors: 19
 Colorway: Colorway 1
 Zoom: 1:1

Machine format: Tajima
 Color changes: 18
 Stops: 19
 Trims: 232
 Appliqués: 0
 Left: 64.7 mm
 Right: 32.6 mm
 Up: 66.6 mm
 Down: 47.7 mm
 EndX: 0.00 in
 EndY: 0.00 in
 Area: 17.25 in²
 Max stitch: 9.2 mm
 Min stitch: 0.0 mm
 Max jump: 6.7 mm
 Total thread: 226.52ft
 Total bobbin: 60.97ft

Stop Sequence:

#	N#	Color	St.	Code	Name	Chart
1.	1		1,122		R240 G186 B49	
2.	2		944		R189 G98 B62	
3.	3		535		R255 G146 B171	
4.	4		501		R186 G83 B95	
5.	14		1,461	14	Brown	Default
6.	5		1,161		R120 G63 B35	
7.	7		1,507		R25 G31 B38	
8.	9		1,204		R75 G81 B89	
9.	6		611		R255 G237 B182	
10.	10		683		R207 G152 B93	
11.	12		427		R255 G200 B185	
12.	11		321		R217 G152 B151	
13.	13		497		R107 G117 B115	
14.	15		318		R54 G59 B58	
15.	16		401		R166 G132 B128	
16.	17		377		R120 G85 B71	
17.	18		589	18	Grey	Default
18.	19		562		R171 G171 B171	
19.	8		4,668	8	Black	Default



Production Worksheet

Wilcom EmbroideryStudio - Designing



Design: **5**

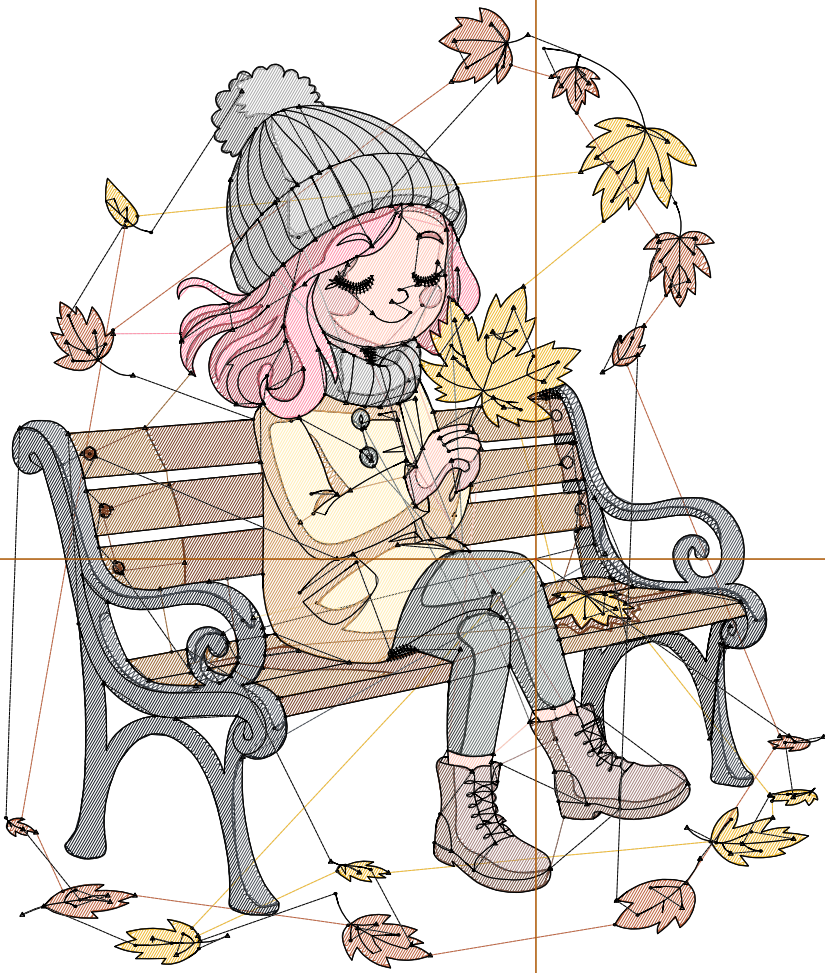
Title:

Stitches: 20,190
 Height: 5.00 in
 Width: 4.26 in
 Colors: 19
 Colorway: Colorway 1
 Zoom: 1:1

Machine format: Tajima
 Color changes: 18
 Stops: 19
 Trims: 243
 Appliqués: 0
 Left: 70.1 mm
 Right: 38.0 mm
 Up: 72.9 mm
 Down: 54.1 mm
 EndX: 0.00 in
 EndY: 0.00 in
 Area: 21.29 in²
 Max stitch: 10.2 mm
 Min stitch: 0.0 mm
 Max jump: 7.0 mm
 Total thread: 261.67ft
 Total bobbin: 72.86ft

Stop Sequence:

#	N#	Color	St.	Code	Name	Chart
1.	1		1,285		R240 G186 B49	
2.	2		1,083		R189 G98 B62	
3.	3		616		R255 G146 B171	
4.	4		565		R186 G83 B95	
5.	14		1,655	14	Brown	Default
6.	5		1,334		R120 G63 B35	
7.	7		1,747		R25 G31 B38	
8.	9		1,386		R75 G81 B89	
9.	6		716		R255 G237 B182	
10.	10		779		R207 G152 B93	
11.	12		495		R255 G200 B185	
12.	11		381		R217 G152 B151	
13.	13		565		R107 G117 B115	
14.	15		358		R54 G59 B58	
15.	16		452		R166 G132 B128	
16.	17		424		R120 G85 B71	
17.	18		683	18	Grey	Default
18.	19		653		R171 G171 B171	
19.	8		5,011	8	Black	Default



Production Worksheet

Wilcom EmbroideryStudio - Designing



Design: **5**

Title:

Stitches: 22,468
 Height: 5.50 in
 Width: 4.68 in
 Colors: 19
 Colorway: Colorway 1
 Zoom: 1:1



Machine format: Tajima
 Color changes: 18
 Stops: 19
 Trims: 249
 Appliqués: 0
 Left: 75.5 mm
 Right: 43.4 mm
 Up: 79.3 mm
 Down: 60.4 mm
 EndX: 0.00 in
 EndY: 0.00 in
 Area: 25.76 in²
 Max stitch: 11.2 mm
 Min stitch: 0.0 mm
 Max jump: 6.9 mm
 Total thread: 297.24ft
 Total bobbin: 85.08ft

Stop Sequence:

#	N#	Color	St.	Code	Name	Chart
1.	1		1,470	R240	G186 B49	
2.	2		1,201	R189	G98 B62	
3.	3		691	R255	G146 B171	
4.	4		636	R186	G83 B95	
5.	14		1,872	14	Brown	Default
6.	5		1,495	R120	G63 B35	
7.	7		1,985	R25	G31 B38	
8.	9		1,582	R75	G81 B89	
9.	6		816	R255	G237 B182	
10.	10		901	R207	G152 B93	
11.	12		554	R255	G200 B185	
12.	11		417	R217	G152 B151	
13.	13		645	R107	G117 B115	
14.	15		402	R54	G59 B58	
15.	16		499	R166	G132 B128	
16.	17		483	R120	G85 B71	
17.	18		791	18	Grey	Default
18.	19		744	R171	G171 B171	
19.	8		5,282	8	Black	Default

Production Worksheet

Wilcom EmbroideryStudio - Designing



Design: **6**

Title:

Stitches: 24,785
Height: 6.00 in
Width: 5.11 in
Colors: 19
Colorway: Colorway 1
Zoom: 1:1



Production Worksheet

Wilcom EmbroideryStudio - Designing



Design: **6**

Title:

Stitches: 24,785
 Height: 6.00 in
 Width: 5.11 in
 Colors: 19
 Colorway: Colorway 1
 Zoom: 1:1

Machine format: Tajima
 Color changes: 18
 Stops: 19
 Trims: 256
 Appliqués: 0
 Left: 80.9 mm
 Right: 48.9 mm
 Up: 85.6 mm
 Down: 66.8 mm
 EndX: 0.00 in
 EndY: 0.00 in
 Area 30.66 in²
 Max stitch: 10.7 mm
 Min stitch: 0.0 mm
 Max jump: 6.9 mm
 Total thread: 334.69ft
 Total bobbin: 98.27ft

Stop Sequence:

#	N#	Color	St.	Code	Name	Chart
1.	1		1,633		R240 G186 B49	
2.	2		1,353		R189 G98 B62	
3.	3		786		R255 G146 B171	
4.	4		702		R186 G83 B95	
5.	14		2,106	14	Brown	Default
6.	5		1,641		R120 G63 B35	
7.	7		2,219		R25 G31 B38	
8.	9		1,737		R75 G81 B89	
9.	6		921		R255 G237 B182	
10.	10		1,002		R207 G152 B93	
11.	12		634		R255 G200 B185	
12.	11		457		R217 G152 B151	
13.	13		716		R107 G117 B115	
14.	15		445		R54 G59 B58	
15.	16		574		R166 G132 B128	
16.	17		532		R120 G85 B71	
17.	18		897	18	Grey	Default
18.	19		855		R171 G171 B171	
19.	8		5,573	8	Black	Default

Production Worksheet

Wilcom EmbroideryStudio - Designing



Design: **6**

Title:

Stitches: 27,230
Height: 6.50 in
Width: 5.54 in
Colors: 19
Colorway: Colorway 1
Zoom: 1:1



Production Worksheet

Wilcom EmbroideryStudio - Designing



Design: **6**

Title:

Stitches: 27,230
 Height: 6.50 in
 Width: 5.54 in
 Colors: 19
 Colorway: Colorway 1
 Zoom: 1:1

Machine format: Tajima
 Color changes: 18
 Stops: 19
 Trims: 264
 Appliqués: 0
 Left: 86.3 mm
 Right: 54.3 mm
 Up: 92.0 mm
 Down: 73.1 mm
 EndX: 0.00 in
 EndY: 0.00 in
 Area 35.98 in²
 Max stitch: 11.6 mm
 Min stitch: 0.0 mm
 Max jump: 7.0 mm
 Total thread: 374.94ft
 Total bobbin: 112.61ft

Stop Sequence:

#	N#	Color	St.	Code	Name	Chart
1.	1		1,812		R240 G186 B49	
2.	2		1,467		R189 G98 B62	
3.	3		875		R255 G146 B171	
4.	4		785		R186 G83 B95	
5.	14		2,358	14	Brown	Default
6.	5		1,821		R120 G63 B35	
7.	7		2,506		R25 G31 B38	
8.	9		1,912		R75 G81 B89	
9.	6		1,031		R255 G237 B182	
10.	10		1,122		R207 G152 B93	
11.	12		709		R255 G200 B185	
12.	11		511		R217 G152 B151	
13.	13		803		R107 G117 B115	
14.	15		491		R54 G59 B58	
15.	16		636		R166 G132 B128	
16.	17		595		R120 G85 B71	
17.	18		971	18	Grey	Default
18.	19		959		R171 G171 B171	
19.	8		5,864	8	Black	Default

Production Worksheet

Wilcom EmbroideryStudio - Designing



Design: **7**

Title:

Stitches: 29,833
Height: 7.00 in
Width: 5.96 in
Colors: 19
Colorway: Colorway 1
Zoom: 1:1



Production Worksheet

Wilcom EmbroideryStudio - Designing



Design: **7**

Title:

Stitches: 29,833
 Height: 7.00 in
 Width: 5.96 in
 Colors: 19
 Colorway: Colorway 1
 Zoom: 1:1

Machine format: Tajima
 Color changes: 18
 Stops: 19
 Trims: 273
 Appliqués: 0
 Left: 91.8 mm
 Right: 59.7 mm
 Up: 98.3 mm
 Down: 79.5 mm
 EndX: 0.00 in
 EndY: 0.00 in
 Area 41.73 in²
 Max stitch: 11.8 mm
 Min stitch: 0.0 mm
 Max jump: 7.0 mm
 Total thread: 417.73ft
 Total bobbin: 127.85ft

Stop Sequence:

#	N#	Color	St.	Code	Name	Chart
1.	1		2,014		R240 G186 B49	
2.	2		1,654		R189 G98 B62	
3.	3		956		R255 G146 B171	
4.	4		874		R186 G83 B95	
5.	14		2,598	14	Brown	Default
6.	5		2,018		R120 G63 B35	
7.	7		2,753		R25 G31 B38	
8.	9		2,130		R75 G81 B89	
9.	6		1,143		R255 G237 B182	
10.	10		1,240		R207 G152 B93	
11.	12		772		R255 G200 B185	
12.	11		565		R217 G152 B151	
13.	13		887		R107 G117 B115	
14.	15		543		R54 G59 B58	
15.	16		712		R166 G132 B128	
16.	17		653		R120 G85 B71	
17.	18		1,085	18	Grey	Default
18.	19		1,082		R171 G171 B171	
19.	8		6,152	8	Black	Default

Production Worksheet

Wilcom EmbroideryStudio - Designing



Design: **7**

Title:

Stitches: 32,547
Height: 7.50 in
Width: 6.39 in
Colors: 19
Colorway: Colorway 1
Zoom: 1:1



Production Worksheet

Wilcom EmbroideryStudio - Designing



Design: **7**

Title:

Stitches: 32,547
 Height: 7.50 in
 Width: 6.39 in
 Colors: 19
 Colorway: Colorway 1
 Zoom: 1:1

Machine format: Tajima
 Color changes: 18
 Stops: 19
 Trims: 283
 Appliqués: 0
 Left: 97.2 mm
 Right: 65.1 mm
 Up: 104.7 mm
 Down: 85.8 mm
 EndX: 0.00 in
 EndY: 0.00 in
 Area 47.91 in²
 Max stitch: 10.8 mm
 Min stitch: 0.0 mm
 Max jump: 7.0 mm
 Total thread: 463.75ft
 Total bobbin: 144.56ft

Stop Sequence:

#	N#	Color	St.	Code	Name	Chart
1.	1		2,212		R240 G186 B49	
2.	2		1,791		R189 G98 B62	
3.	3		1,057		R255 G146 B171	
4.	4		982		R186 G83 B95	
5.	14		2,857	14	Brown	Default
6.	5		2,190		R120 G63 B35	
7.	7		3,038		R25 G31 B38	
8.	9		2,306		R75 G81 B89	
9.	6		1,292		R255 G237 B182	
10.	10		1,410		R207 G152 B93	
11.	12		875		R255 G200 B185	
12.	11		600		R217 G152 B151	
13.	13		983		R107 G117 B115	
14.	15		621		R54 G59 B58	
15.	16		802		R166 G132 B128	
16.	17		715		R120 G85 B71	
17.	18		1,208	18	Grey	Default
18.	19		1,193		R171 G171 B171	
19.	8		6,413	8	Black	Default