

Production Worksheet

Wilcom EmbroideryStudio - Designing



Design: **3**

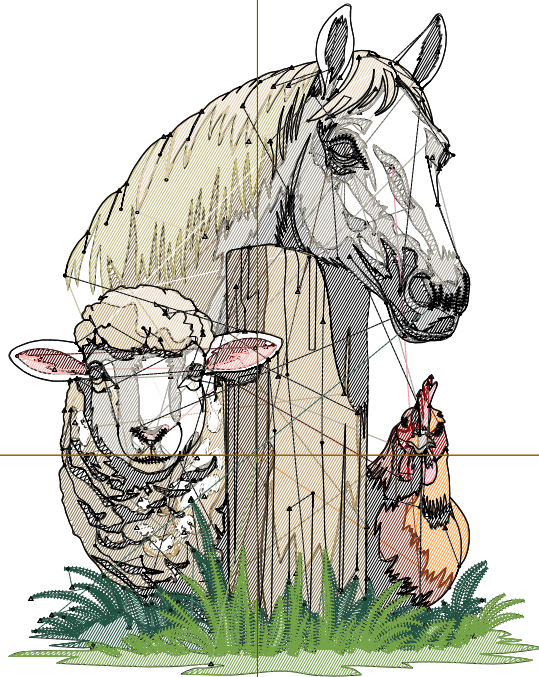
Title:

Stitches: 20,966
 Height: 3.50 in
 Width: 2.77 in
 Colors: 17
 Colorway: Colorway 1
 Zoom: 1:1

Machine format: Tajima
 Color changes: 16
 Stops: 17
 Trims: 187
 Appliqués: 0
 Left: 32.9 mm
 Right: 37.5 mm
 Up: 59.7 mm
 Down: 29.2 mm
 EndX: 0.00 in
 EndY: 0.00 in
 Area 9.70 in²
 Max stitch: 9.0 mm
 Min stitch: 0.0 mm
 Max jump: 7.0 mm
 Total thread: 257.35ft
 Total bobbin: 67.67ft

Stop Sequence:

#	N#	Color	St.	Code	Name	Chart
1.	12		304	12	Orange	Default
2.	1		330		R133 G53 B35	
3.	2		2,079		R138 G116 B81	
4.	4		1,312		R191 G161 B112	
5.	5		941		R199 G189 B132	
6.	6		595		R227 G206 B176	
7.	9		1,671	9	White	Default
8.	18		885	18	Grey	Default
9.	7		97		R255 G139 B166	
10.	11		152	11	Dark Red	Default
11.	10		180		R79 G0 B0	
12.	13		184		R255 G180 B173	
13.	3		1,698		R166 G162 B150	
14.	15		444		R77 G51 B26	
15.	8		4,532	8	Black	Default
16.	14		2,889		R34 G84 B67	
17.	16		2,671		R117 G163 B71	



Production Worksheet

Wilcom EmbroideryStudio - Designing



Design: **4**

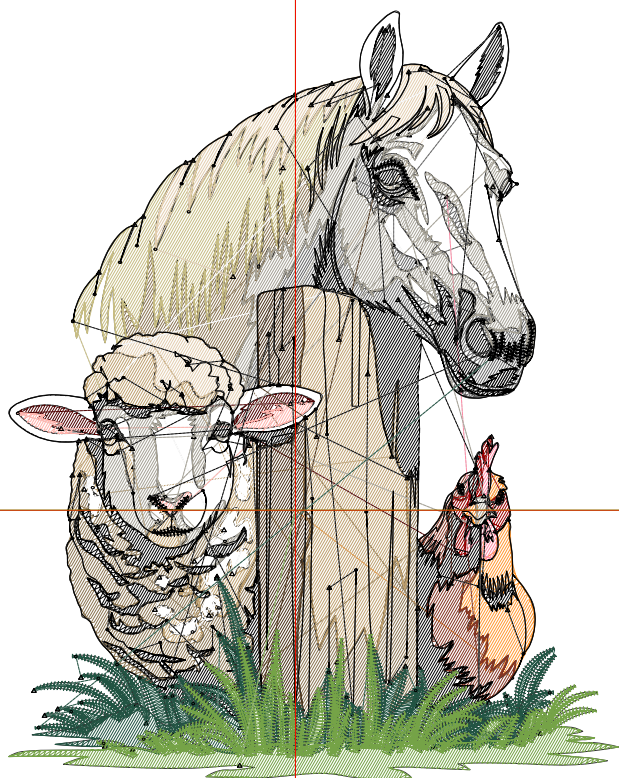
Title:

Stitches: 24,121
 Height: 4.00 in
 Width: 3.18 in
 Colors: 17
 Colorway: Colorway 1
 Zoom: 1:1

Machine format: Tajima
 Color changes: 16
 Stops: 17
 Trims: 190
 Appliqués: 0
 Left: 37.9 mm
 Right: 42.8 mm
 Up: 66.0 mm
 Down: 35.5 mm
 EndX: 0.00 in
 EndY: 0.00 in
 Area: 12.70 in²
 Max stitch: 10.2 mm
 Min stitch: 0.0 mm
 Max jump: 6.9 mm
 Total thread: 304.28ft
 Total bobbin: 83.22ft

Stop Sequence:

#	N#	Color	St.	Code	Name	Chart
1.	12		350	12	Orange	Default
2.	1		379		R133 G53 B35	
3.	2		2,477		R138 G116 B81	
4.	4		1,560		R191 G161 B112	
5.	5		1,085		R199 G189 B132	
6.	6		717		R227 G206 B176	
7.	9		1,934	9	White	Default
8.	18		986	18	Grey	Default
9.	7		108		R255 G139 B166	
10.	11		167	11	Dark Red	Default
11.	10		205		R79 G0 B0	
12.	13		214		R255 G180 B173	
13.	3		1,978		R166 G162 B150	
14.	15		531		R77 G51 B26	
15.	8		5,100	8	Black	Default
16.	14		3,257		R34 G84 B67	
17.	16		3,071		R117 G163 B71	



Production Worksheet

Wilcom EmbroideryStudio - Designing



Design: **4**

Title:

Stitches: 27,556

Height: 4.50 in

Width: 3.57 in

Colors: 17

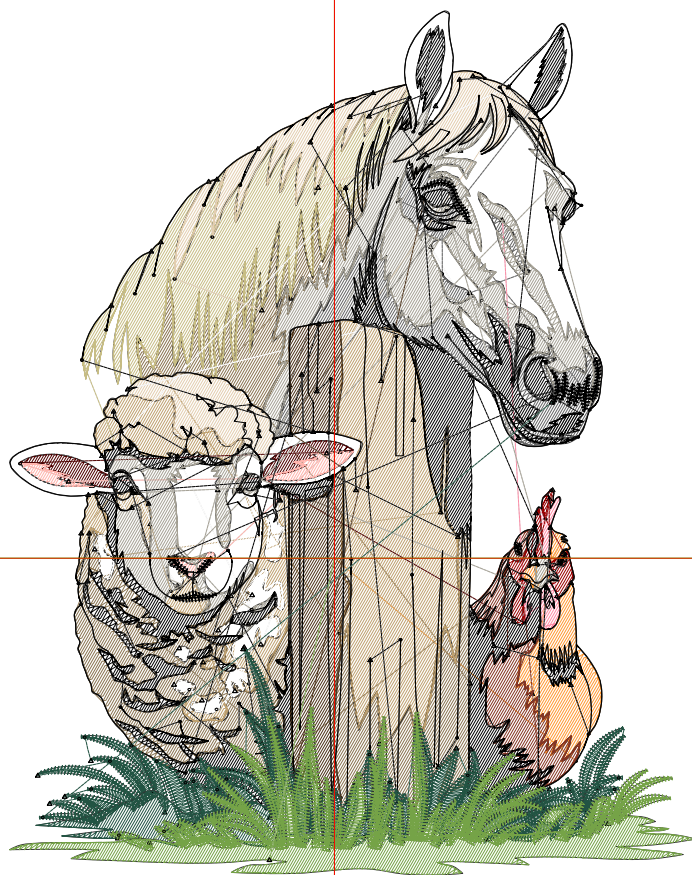
Colorway: Colorway 1

Zoom: 1:1

Machine format: Tajima
 Color changes: 16
 Stops: 17
 Trims: 197
 Appliqués: 0
 Left: 42.9 mm
 Right: 47.8 mm
 Up: 72.3 mm
 Down: 41.9 mm
 EndX: 0.00 in
 EndY: 0.00 in
 Area: 16.07 in²
 Max stitch: 11.5 mm
 Min stitch: 0.0 mm
 Max jump: 7.0 mm
 Total thread: 356.93ft
 Total bobbin: 101.06ft

Stop Sequence:

#	N#	Color	St.	Code	Name	Chart
1.	12		389	12	Orange	Default
2.	1		452		R133 G53 B35	
3.	2		2,827		R138 G116 B81	
4.	4		1,831		R191 G161 B112	
5.	5		1,299		R199 G189 B132	
6.	6		843		R227 G206 B176	
7.	9		2,238	9	White	Default
8.	18		1,172	18	Grey	Default
9.	7		119		R255 G139 B166	
10.	11		203	11	Dark Red	Default
11.	10		236		R79 G0 B0	
12.	13		241		R255 G180 B173	
13.	3		2,244		R166 G162 B150	
14.	15		639		R77 G51 B26	
15.	8		5,695	8	Black	Default
16.	14		3,650		R34 G84 B67	
17.	16		3,476		R117 G163 B71	



Production Worksheet

Wilcom EmbroideryStudio - Designing



Design: **5**

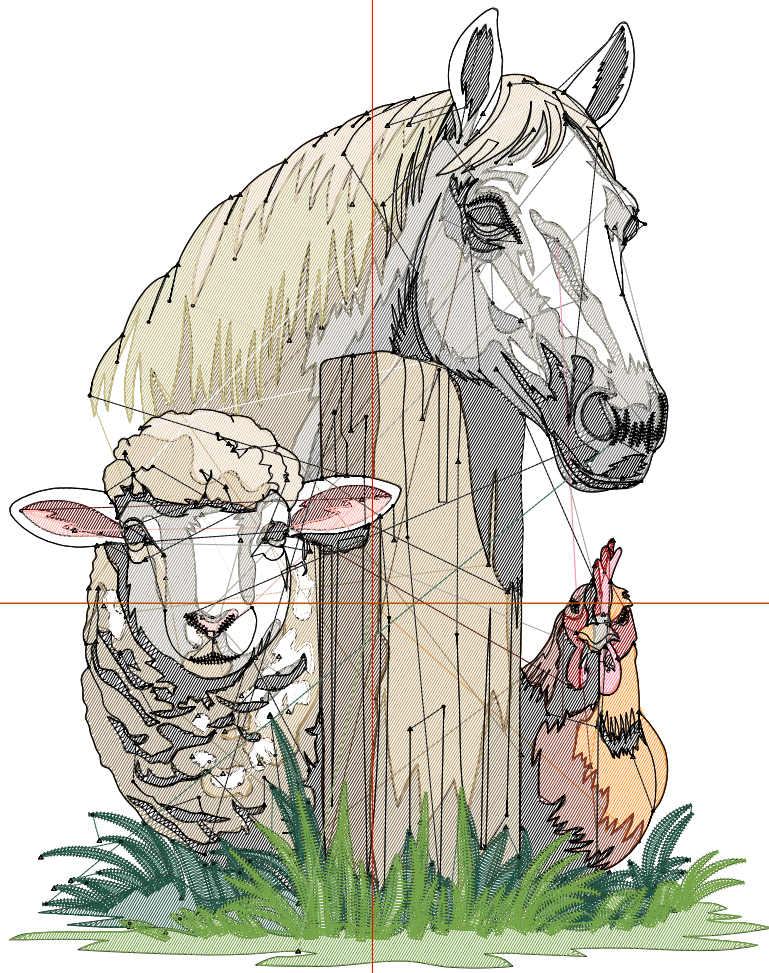
Title:

Stitches: 31,141
Height: 5.00 in
Width: 3.97 in
Colors: 17
Colorway: Colorway 1
Zoom: 1:1

Machine format: Tajima
Color changes: 16
Stops: 17
Trims: 206
Appliqués: 0
Left: 48.0 mm
Right: 52.9 mm
Up: 78.7 mm
Down: 48.2 mm
EndX: 0.00 in
EndY: 0.00 in
Area: 19.84 in²
Max stitch: 12.0 mm
Min stitch: 0.0 mm
Max jump: 7.0 mm
Total thread: 412.52ft
Total bobbin: 120.06ft

Stop Sequence:

#	N#	Color	St.	Code	Name	Chart
1.	12		453	12	Orange	Default
2.	1		495		R133 G53 B35	
3.	2		3,239		R138 G116 B81	
4.	4		2,113		R191 G161 B112	
5.	5		1,485		R199 G189 B132	
6.	6		1,003		R227 G206 B176	
7.	9		2,585	9	White	Default
8.	18		1,343	18	Grey	Default
9.	7		142		R255 G139 B166	
10.	11		221	11	Dark Red	Default
11.	10		274		R79 G0 B0	
12.	13		266		R255 G180 B173	
13.	3		2,551		R166 G162 B150	
14.	15		738		R77 G51 B26	
15.	8		6,358	8	Black	Default
16.	14		4,017		R34 G84 B67	
17.	16		3,856		R117 G163 B71	



Production Worksheet

Wilcom EmbroideryStudio - Designing



Design: **5**

Title:

Stitches: 34,744

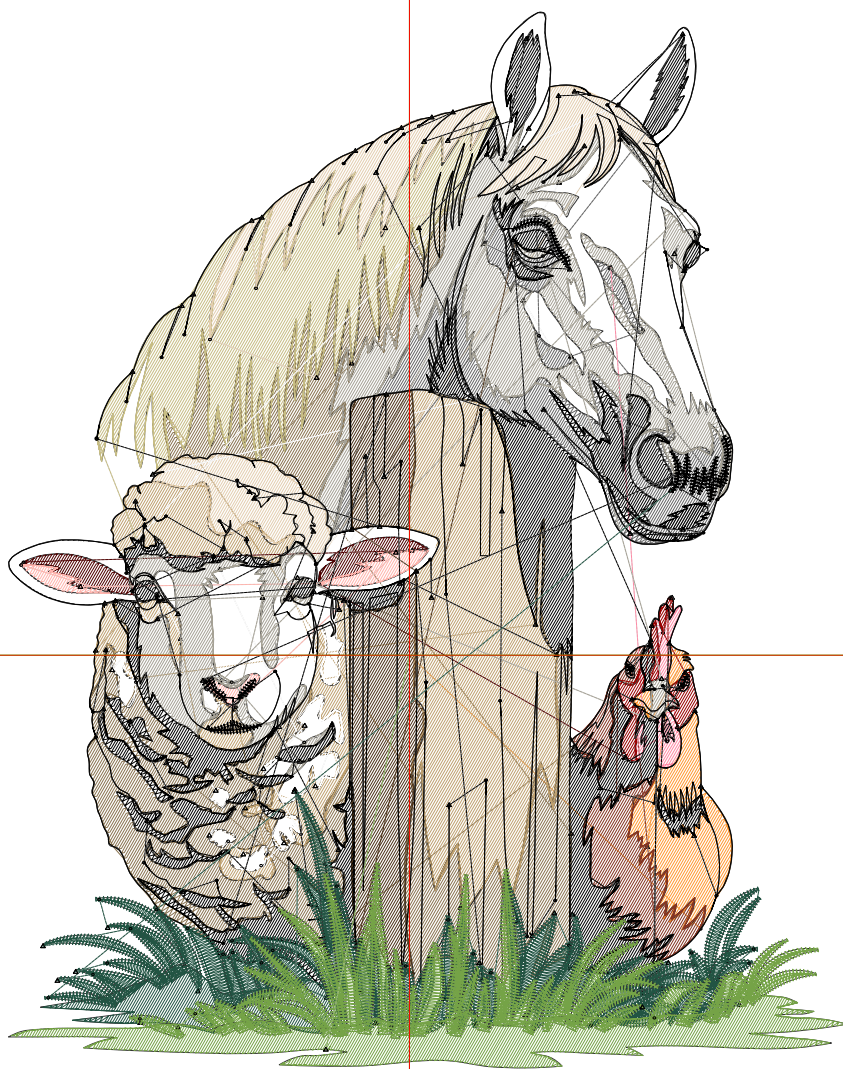
Height: 5.50 in

Width: 4.36 in

Colors: 17

Colorway: Colorway 1

Zoom: 1:1



Machine format: Tajima
 Color changes: 16
 Stops: 17
 Trims: 212
 Appliqués: 0
 Left: 53.0 mm
 Right: 57.7 mm
 Up: 85.0 mm
 Down: 54.6 mm
 EndX: 0.00 in
 EndY: 0.00 in
 Area: 23.96 in²
 Max stitch: 11.6 mm
 Min stitch: 0.0 mm
 Max jump: 7.0 mm
 Total thread: 471.40ft
 Total bobbin: 140.94ft

Stop Sequence:

#	N#	Color	St.	Code	Name	Chart
1.	12		503	12	Orange	Default
2.	1		572		R133 G53 B35	
3.	2		3,645		R138 G116 B81	
4.	4		2,425		R191 G161 B112	
5.	5		1,704		R199 G189 B132	
6.	6		1,139		R227 G206 B176	
7.	9		2,891	9	White	Default
8.	18		1,482	18	Grey	Default
9.	7		159		R255 G139 B166	
10.	11		268	11	Dark Red	Default
11.	10		276		R79 G0 B0	
12.	13		291		R255 G180 B173	
13.	3		2,906		R166 G162 B150	
14.	15		842		R77 G51 B26	
15.	8		6,958	8	Black	Default
16.	14		4,414		R34 G84 B67	
17.	16		4,267		R117 G163 B71	

Production Worksheet

Wilcom EmbroideryStudio - Designing



Design: **6**

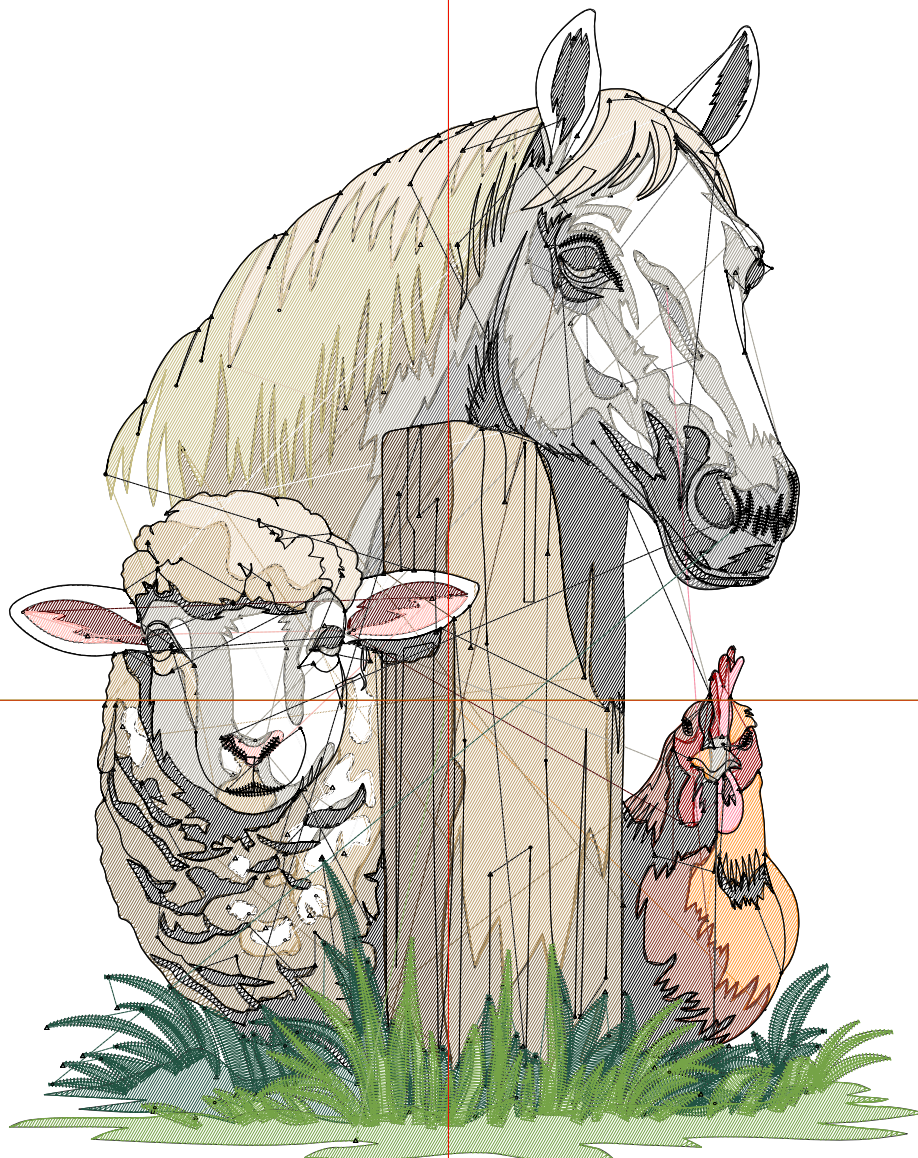
Title:

Stitches: 38,622
 Height: 6.00 in
 Width: 4.75 in
 Colors: 17
 Colorway: Colorway 1
 Zoom: 1:1

Machine format: Tajima
 Color changes: 16
 Stops: 17
 Trims: 220
 Appliqués: 0
 Left: 58.1 mm
 Right: 62.7 mm
 Up: 91.4 mm
 Down: 60.9 mm
 EndX: 0.00 in
 EndY: 0.00 in
 Area: 28.52 in²
 Max stitch: 7.0 mm
 Min stitch: 0.0 mm
 Max jump: 7.0 mm
 Total thread: 534.95ft
 Total bobbin: 163.53ft

Stop Sequence:

#	N#	Color	St.	Code	Name	Chart
1.	12		558	12	Orange	Default
2.	1		640		R133 G53 B35	
3.	2		4,068		R138 G116 B81	
4.	4		2,779		R191 G161 B112	
5.	5		1,895		R199 G189 B132	
6.	6		1,274		R227 G206 B176	
7.	9		3,249	9	White	Default
8.	18		1,680	18	Grey	Default
9.	7		181		R255 G139 B166	
10.	11		282	11	Dark Red	Default
11.	10		331		R79 G0 B0	
12.	13		329		R255 G180 B173	
13.	3		3,246		R166 G162 B150	
14.	15		965		R77 G51 B26	
15.	8		7,650	8	Black	Default
16.	14		4,782		R34 G84 B67	
17.	16		4,711		R117 G163 B71	



Production Worksheet

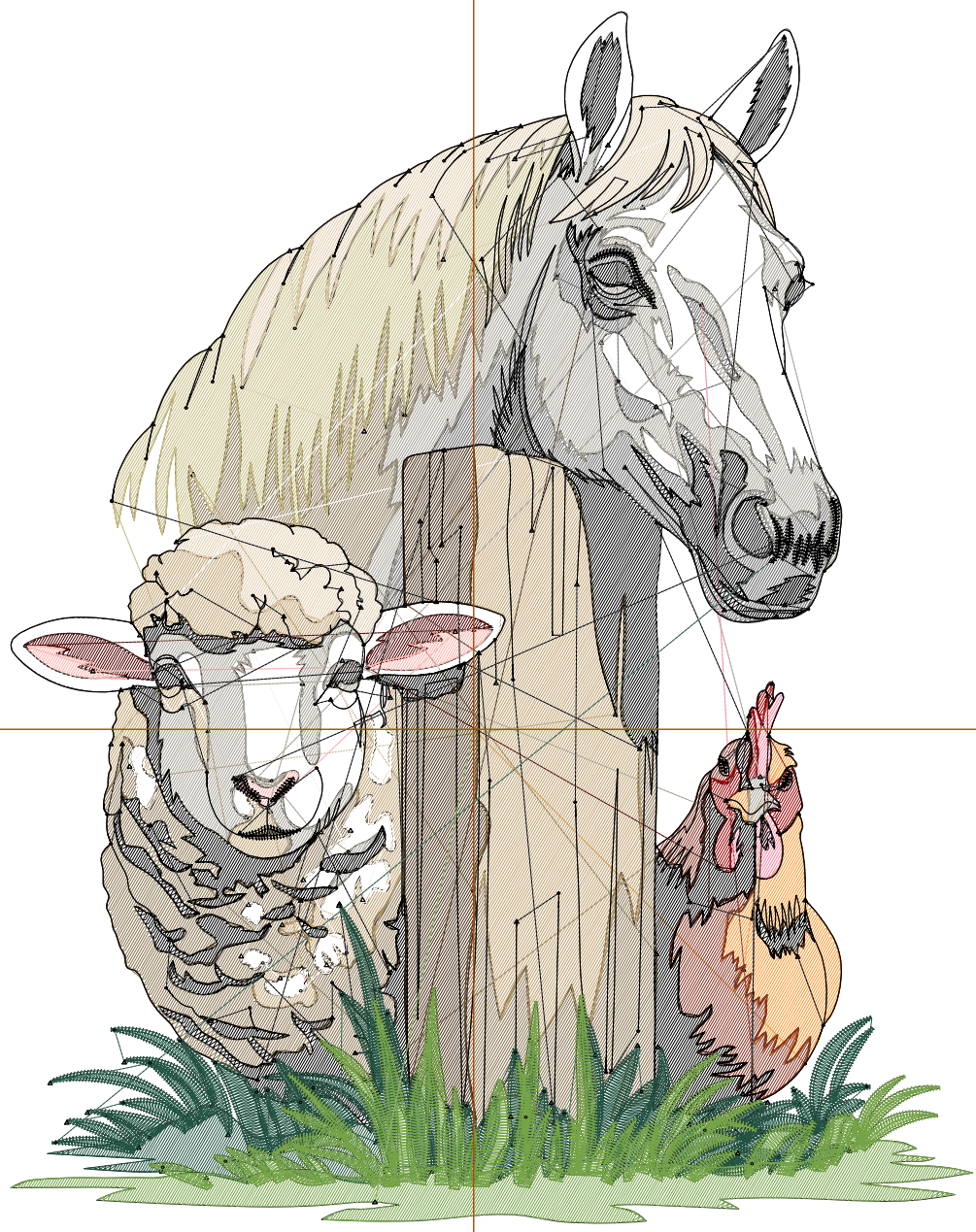
Wilcom EmbroideryStudio - Designing



Design: **6**

Title:

Stitches: 42,258
Height: 6.50 in
Width: 5.16 in
Colors: 17
Colorway: Colorway 1
Zoom: 1:1



1

1

2

2

Production Worksheet

Wilcom EmbroideryStudio - Designing



Design: **6**

Title:

Stitches: 42,258
 Height: 6.50 in
 Width: 5.16 in
 Colors: 17
 Colorway: Colorway 1
 Zoom: 1:1

Machine format: Tajima
 Color changes: 16
 Stops: 17
 Trims: 229
 Appliqués: 0
 Left: 63.1 mm
 Right: 68.0 mm
 Up: 97.7 mm
 Down: 67.3 mm
 EndX: 0.00 in
 EndY: 0.00 in
 Area 33.53 in²
 Max stitch: 7.0 mm
 Min stitch: 0.0 mm
 Max jump: 7.0 mm
 Total thread: 597.33ft
 Total bobbin: 186.35ft

Stop Sequence:

#	N#	Color	St.	Code	Name	Chart
1.	12		625	12	Orange	Default
2.	1		698		R133 G53 B35	
3.	2		4,464		R138 G116 B81	
4.	4		3,085		R191 G161 B112	
5.	5		2,127		R199 G189 B132	
6.	6		1,427		R227 G206 B176	
7.	9		3,556	9	White	Default
8.	18		1,824	18	Grey	Default
9.	7		182		R255 G139 B166	
10.	11		321	11	Dark Red	Default
11.	10		369		R79 G0 B0	
12.	13		349		R255 G180 B173	
13.	3		3,564		R166 G162 B150	
14.	15		1,092		R77 G51 B26	
15.	8		8,265	8	Black	Default
16.	14		5,169		R34 G84 B67	
17.	16		5,139		R117 G163 B71	

Production Worksheet

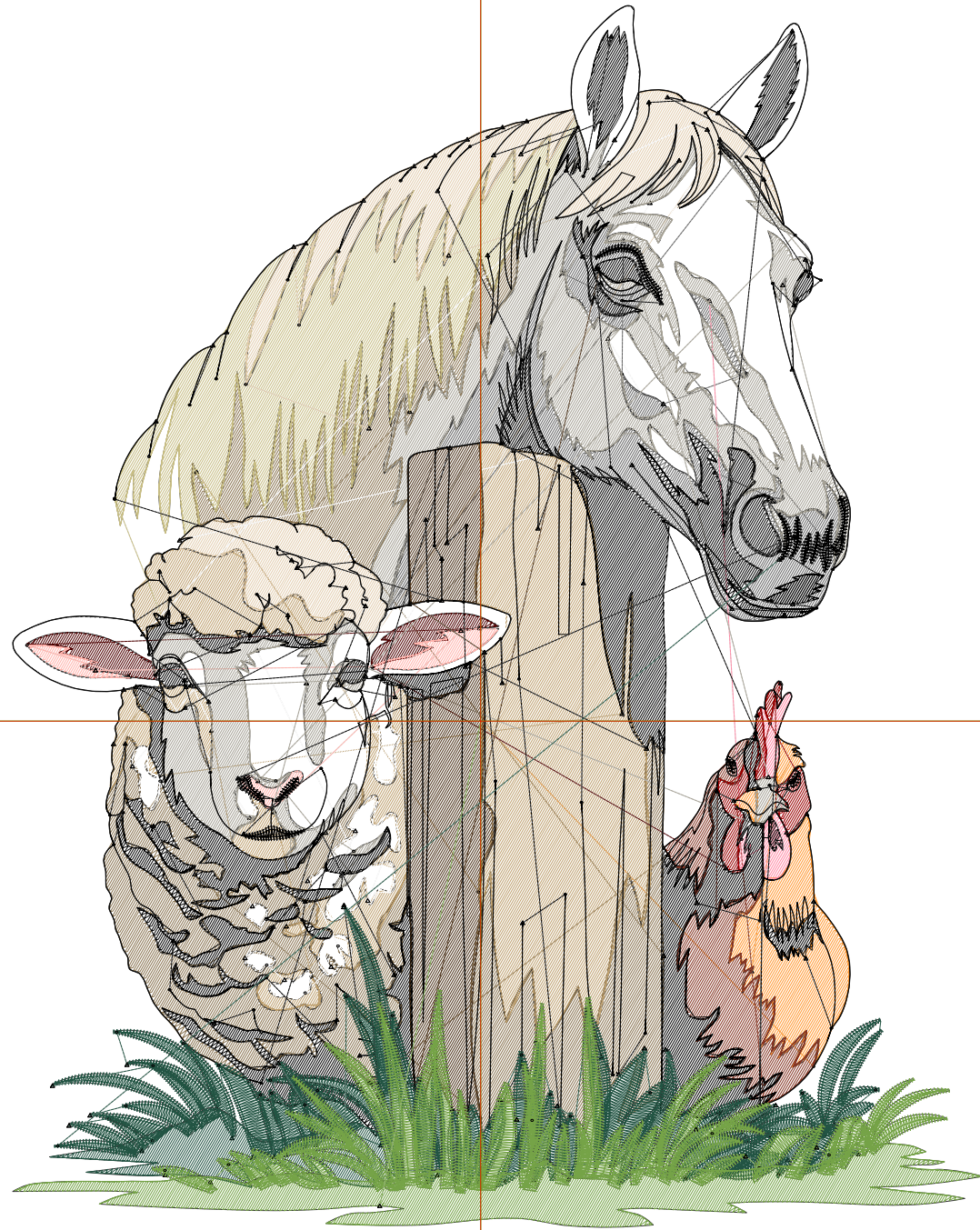
Wilcom EmbroideryStudio - Designing



Design: **7**

Title:

Stitches: 46,281
Height: 7.00 in
Width: 5.56 in
Colors: 17
Colorway: Colorway 1
Zoom: 1:1



Production Worksheet

Wilcom EmbroideryStudio - Designing



Design: **7**

Title:

Stitches: 46,281
 Height: 7.00 in
 Width: 5.56 in
 Colors: 17
 Colorway: Colorway 1
 Zoom: 1:1

Machine format: Tajima
 Color changes: 16
 Stops: 17
 Trims: 233
 Appliqués: 0
 Left: 68.1 mm
 Right: 73.0 mm
 Up: 104.1 mm
 Down: 73.6 mm
 EndX: 0.00 in
 EndY: 0.00 in
 Area 38.87 in²
 Max stitch: 7.0 mm
 Min stitch: 0.0 mm
 Max jump: 7.0 mm
 Total thread: 667.54ft
 Total bobbin: 212.32ft

Stop Sequence:

#	N#	Color	St.	Code	Name	Chart
1.	12		694	12	Orange	Default
2.	1		764		R133 G53 B35	
3.	2		4,926		R138 G116 B81	
4.	4		3,440		R191 G161 B112	
5.	5		2,358		R199 G189 B132	
6.	6		1,548		R227 G206 B176	
7.	9		3,918	9	White	Default
8.	18		2,026	18	Grey	Default
9.	7		219		R255 G139 B166	
10.	11		342	11	Dark Red	Default
11.	10		401		R79 G0 B0	
12.	13		407		R255 G180 B173	
13.	3		3,984		R166 G162 B150	
14.	15		1,233		R77 G51 B26	
15.	8		8,880	8	Black	Default
16.	14		5,563		R34 G84 B67	
17.	16		5,576		R117 G163 B71	

Production Worksheet

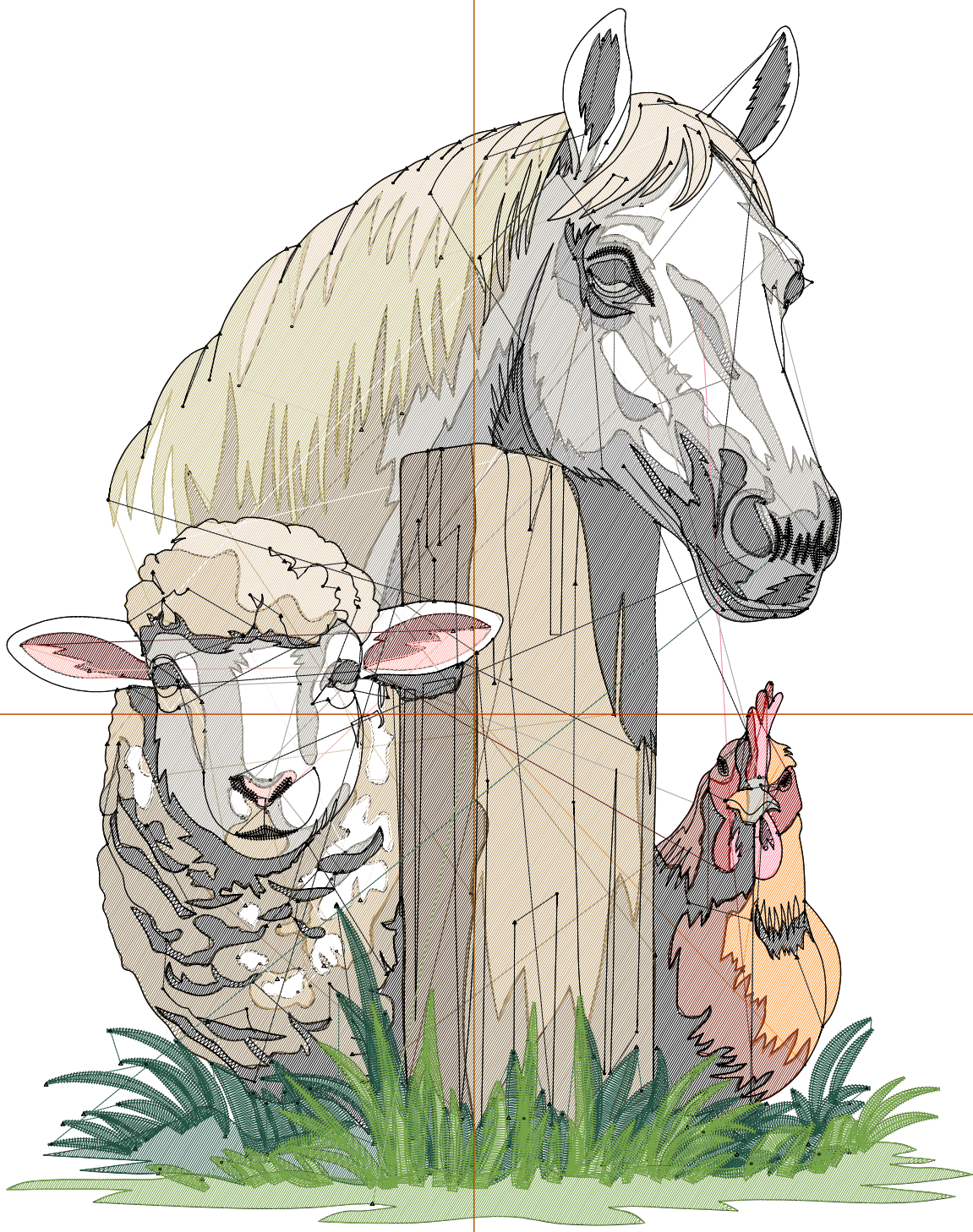
Wilcom EmbroideryStudio - Designing



Design: **7**

Title:

Stitches: 50,373
Height: 7.50 in
Width: 5.95 in
Colors: 17
Colorway: Colorway 1
Zoom: 1:1



Production Worksheet

Wilcom EmbroideryStudio - Designing



Design: **7**

Title:

Stitches: 50,373
 Height: 7.50 in
 Width: 5.95 in
 Colors: 17
 Colorway: Colorway 1
 Zoom: 1:1

Machine format: Tajima
 Color changes: 16
 Stops: 17
 Trims: 239
 Appliqués: 0
 Left: 73.2 mm
 Right: 78.1 mm
 Up: 110.4 mm
 Down: 80.0 mm
 EndX: 0.00 in
 EndY: 0.00 in
 Area 44.64 in²
 Max stitch: 7.0 mm
 Min stitch: 0.0 mm
 Max jump: 7.0 mm
 Total thread: 740.05ft
 Total bobbin: 239.37ft

Stop Sequence:

#	N#	Color	St.	Code	Name	Chart
1.	12		768	12	Orange	Default
2.	1		838		R133 G53 B35	
3.	2		5,424		R138 G116 B81	
4.	4		3,850		R191 G161 B112	
5.	5		2,593		R199 G189 B132	
6.	6		1,709		R227 G206 B176	
7.	9		4,297	9	White	Default
8.	18		2,171	18	Grey	Default
9.	7		216		R255 G139 B166	
10.	11		359	11	Dark Red	Default
11.	10		452		R79 G0 B0	
12.	13		435		R255 G180 B173	
13.	3		4,340		R166 G162 B150	
14.	15		1,372		R77 G51 B26	
15.	8		9,560	8	Black	Default
16.	14		5,960		R34 G84 B67	
17.	16		6,027		R117 G163 B71	