

Production Worksheet

Wilcom EmbroideryStudio - Designing



Design: **3**

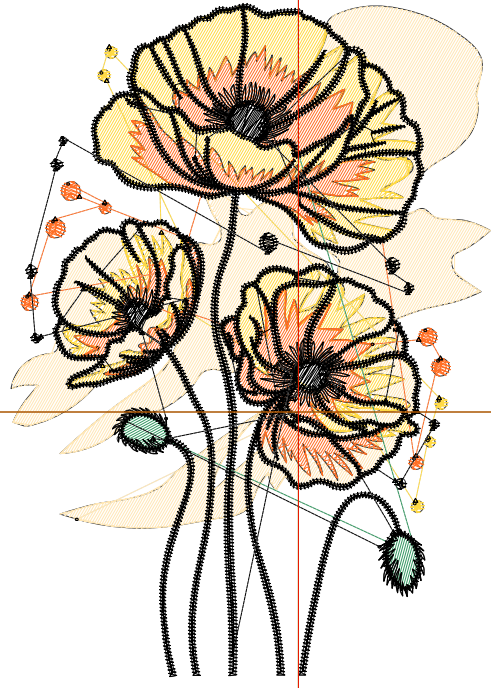
Title:

Stitches: 16,378
Height: 3.51 in
Width: 2.49 in
Colors: 5
Colorway: Colorway 1
Zoom: 1:1

Machine format: Tajima
Color changes: 4
Stops: 5
Trims: 63
Appliqués: 0
Left: 37.9 mm
Right: 25.4 mm
Up: 54.1 mm
Down: 35.0 mm
EndX: 0.00 in
EndY: 0.00 in
Area 8.74 in²
Max stitch: 6.8 mm
Min stitch: 0.0 mm
Max jump: 6.8 mm
Total thread: 200.33ft
Total bobbin: 54.06ft

Stop Sequence:

#	N#	Color	St.	Code	Name	Chart
1.	2		2,985		R255 G231 B182	
2.	3		2,834		R255 G218 B68	
3.	4		2,115		R255 G111 B38	
4.	5		132		R54 G153 B98	
5.	8		8,310	8	Black	Default



Production Worksheet

Wilcom EmbroideryStudio - Designing



Design: **4**

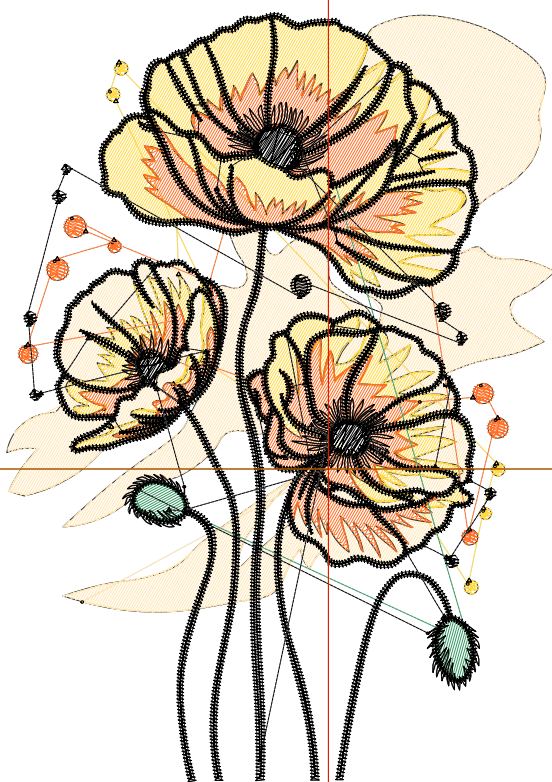
Title:

Stitches: 18,783
Height: 4.01 in
Width: 2.85 in
Colors: 5
Colorway: Colorway 1
Zoom: 1:1

Machine format: Tajima
Color changes: 4
Stops: 5
Trims: 66
Appliqués: 0
Left: 42.4 mm
Right: 29.9 mm
Up: 60.4 mm
Down: 41.4 mm
EndX: 0.00 in
EndY: 0.00 in
Area: 11.42 in²
Max stitch: 6.7 mm
Min stitch: 0.0 mm
Max jump: 6.7 mm
Total thread: 236.61ft
Total bobbin: 66.21ft

Stop Sequence:

#	N#	Color	St.	Code	Name	Chart
1.	2		3,543		R255 G231 B182	
2.	3		3,240		R255 G218 B68	
3.	4		2,510		R255 G111 B38	
4.	5		159		R54 G153 B98	
5.	8		9,329	8	Black	Default



Production Worksheet

Wilcom EmbroideryStudio - Designing



Design: **4**

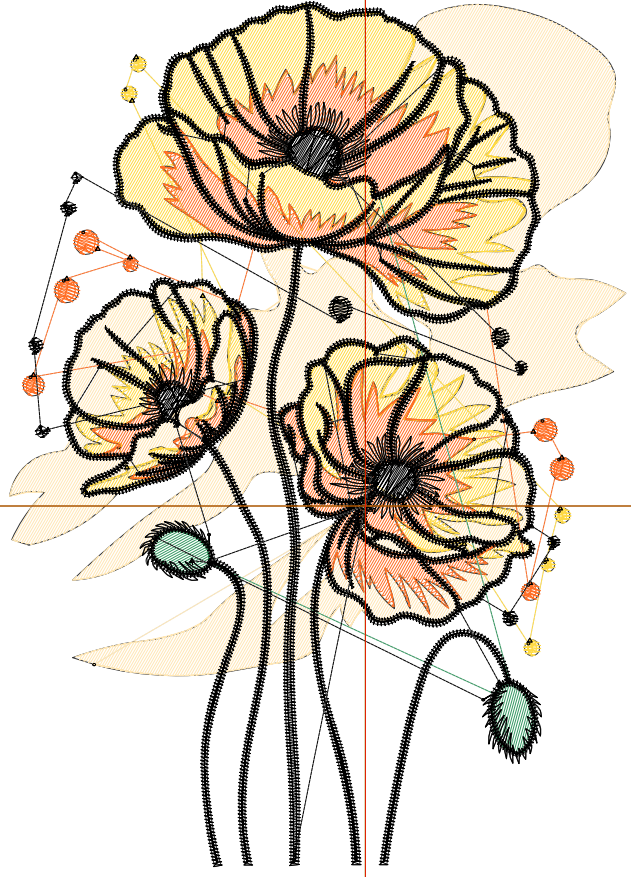
Title:

Stitches: 21,618
 Height: 4.51 in
 Width: 3.21 in
 Colors: 5
 Colorway: Colorway 1
 Zoom: 1:1

Machine format: Tajima
 Color changes: 4
 Stops: 5
 Trims: 68
 Appliqués: 0
 Left: 47.1 mm
 Right: 34.5 mm
 Up: 66.8 mm
 Down: 47.7 mm
 EndX: 0.00 in
 EndY: 0.00 in
 Area: 14.47 in²
 Max stitch: 7.0 mm
 Min stitch: 0.0 mm
 Max jump: 7.0 mm
 Total thread: 280.39ft
 Total bobbin: 81.13ft

Stop Sequence:

#	N#	Color	St.	Code	Name	Chart
1.	2		4,251	R255	G231 B182	
2.	3		3,870	R255	G218 B68	
3.	4		2,928	R255	G111 B38	
4.	5		187	R54	G153 B98	
5.	8		10,380	8	Black	Default



Production Worksheet

Wilcom EmbroideryStudio - Designing



Design: **5**

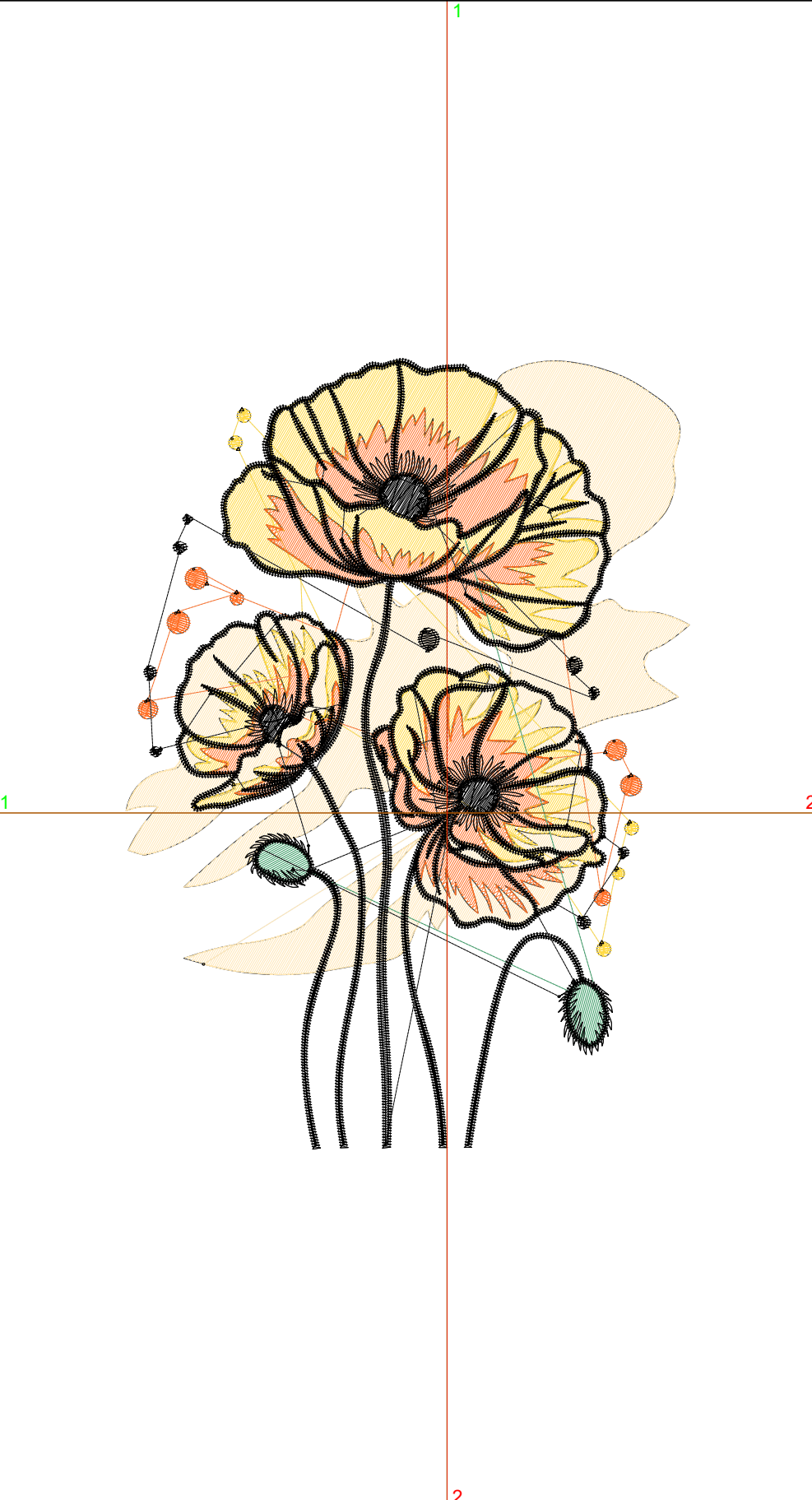
Title:

Stitches: 24,426
 Height: 5.01 in
 Width: 3.57 in
 Colors: 5
 Colorway: Colorway 1
 Zoom: 1:1

Machine format: Tajima
 Color changes: 4
 Stops: 5
 Trims: 75
 Appliqués: 0
 Left: 51.6 mm
 Right: 39.0 mm
 Up: 73.1 mm
 Down: 54.1 mm
 EndX: 0.00 in
 EndY: 0.00 in
 Area: 17.86 in²
 Max stitch: 6.9 mm
 Min stitch: 0.0 mm
 Max jump: 7.0 mm
 Total thread: 324.63ft
 Total bobbin: 96.42ft

Stop Sequence:

#	N#	Color	St.	Code	Name	Chart
1.	2		4,981	R255	G231 B182	
2.	3		4,382	R255	G218 B68	
3.	4		3,361	R255	G111 B38	
4.	5		205	R54	G153 B98	
5.	8		11,495	8	Black	Default



Production Worksheet

Wilcom EmbroideryStudio - Designing



Design: **5**

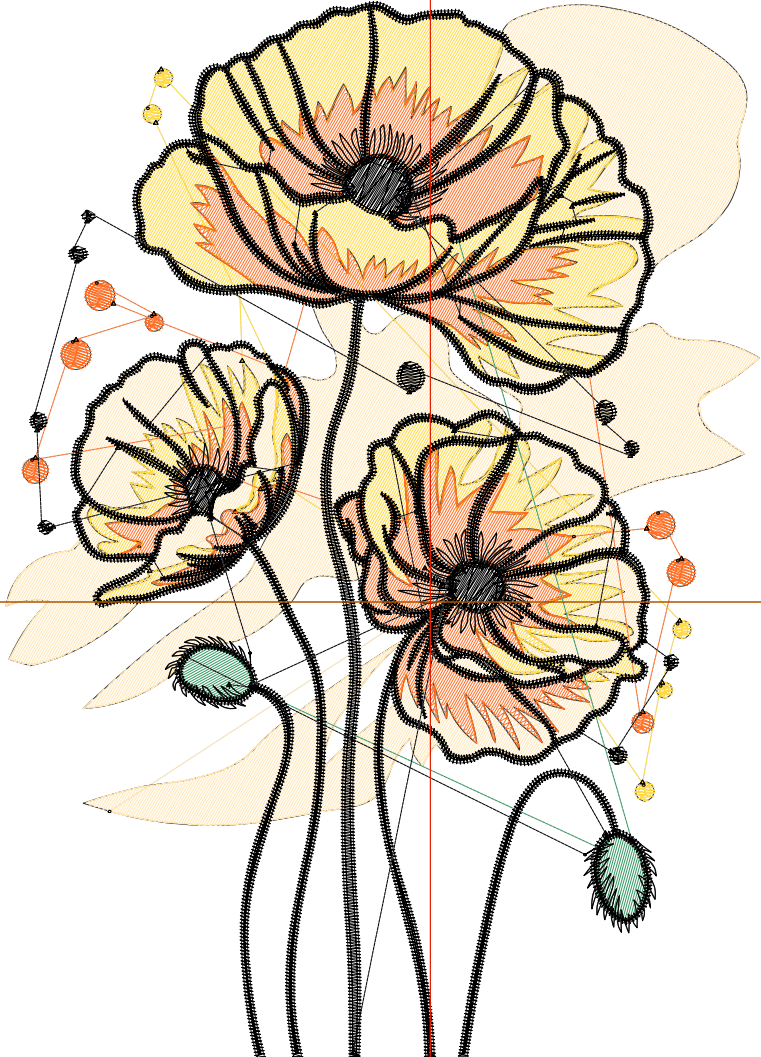
Title:

Stitches: 27,118
 Height: 5.51 in
 Width: 3.92 in
 Colors: 5
 Colorway: Colorway 1
 Zoom: 1:1

Machine format: Tajima
 Color changes: 4
 Stops: 5
 Trims: 75
 Appliqués: 0
 Left: 56.1 mm
 Right: 43.5 mm
 Up: 79.5 mm
 Down: 60.4 mm
 EndX: 0.00 in
 EndY: 0.00 in
 Area: 21.61 in²
 Max stitch: 7.0 mm
 Min stitch: 0.0 mm
 Max jump: 7.0 mm
 Total thread: 369.85ft
 Total bobbin: 112.75ft

Stop Sequence:

#	N#	Color	St.	Code	Name	Chart
1.	2		5,674		R255 G231 B182	
2.	3		4,870		R255 G218 B68	
3.	4		3,833		R255 G111 B38	
4.	5		239		R54 G153 B98	
5.	8		12,500	8	Black	Default



Production Worksheet

Wilcom EmbroideryStudio - Designing



Design: **6**

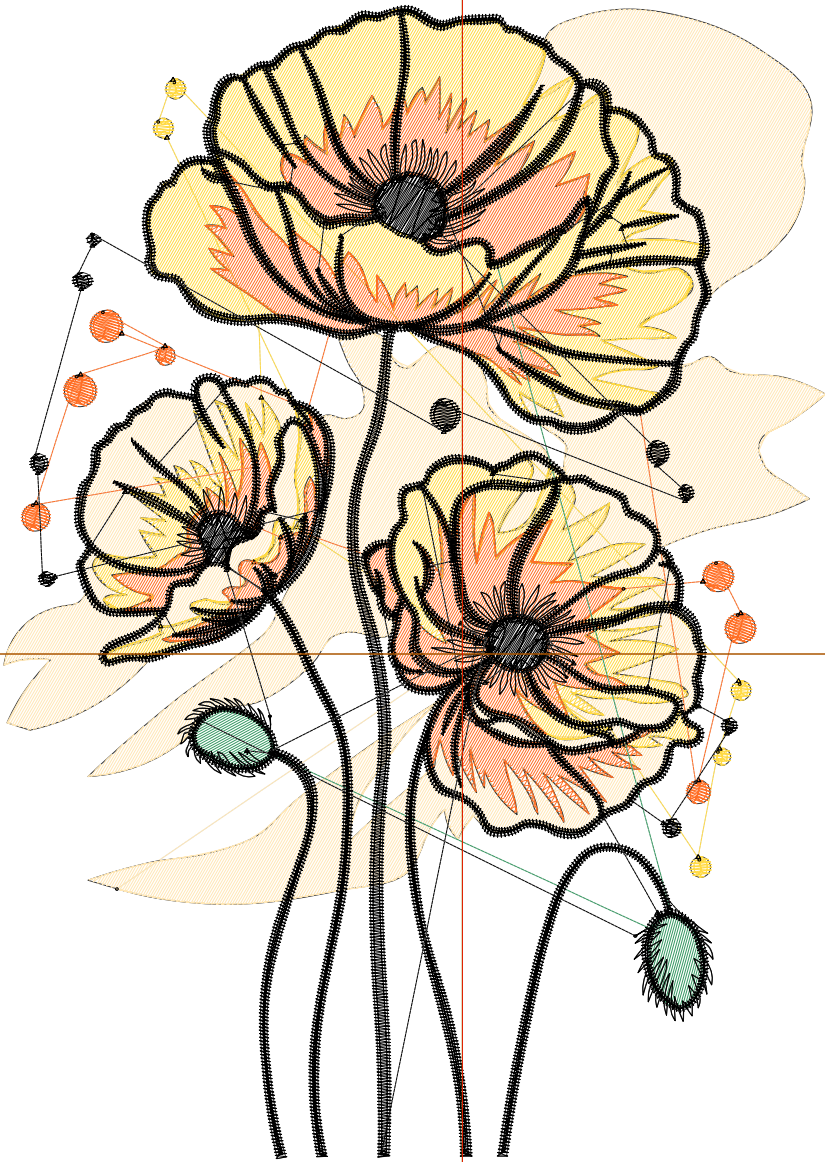
Title:

Stitches: 30,182
Height: 6.01 in
Width: 4.28 in
Colors: 5
Colorway: Colorway 1
Zoom: 1:1

Machine format: Tajima
Color changes: 4
Stops: 5
Trims: 76
Appliqués: 0
Left: 60.7 mm
Right: 48.1 mm
Up: 85.8 mm
Down: 66.8 mm
EndX: 0.00 in
EndY: 0.00 in
Area: 25.71 in²
Max stitch: 7.0 mm
Min stitch: 0.0 mm
Max jump: 7.0 mm
Total thread: 421.62ft
Total bobbin: 131.51ft

Stop Sequence:

#	N#	Color	St.	Code	Name	Chart
1.	2		6,447		R255 G231 B182	
2.	3		5,619		R255 G218 B68	
3.	4		4,301		R255 G111 B38	
4.	5		275		R54 G153 B98	
5.	8		13,538	8	Black	Default



Production Worksheet

Wilcom EmbroideryStudio - Designing



Design: **6**

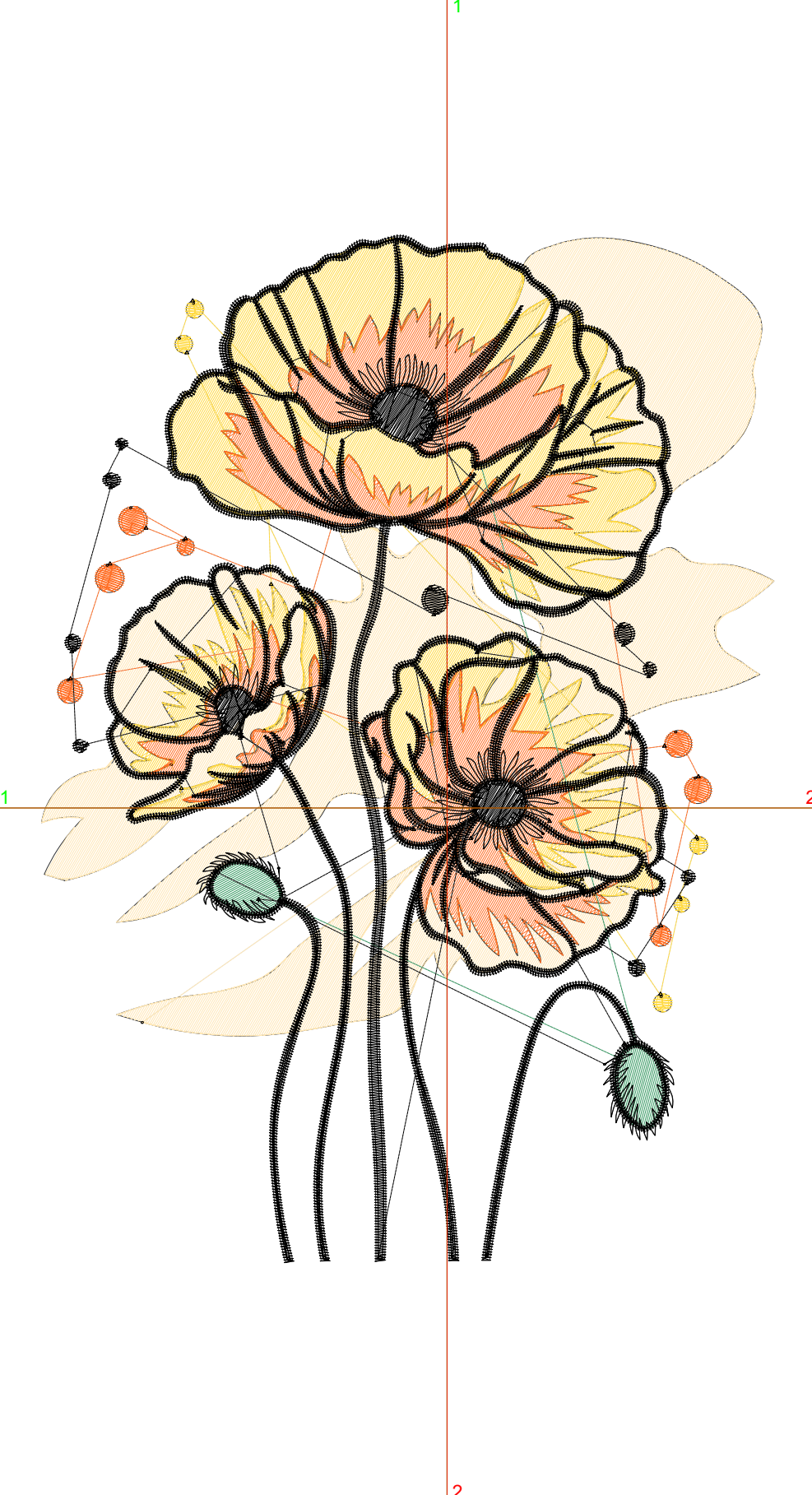
Title:

Stitches: 33,282
 Height: 6.51 in
 Width: 4.64 in
 Colors: 5
 Colorway: Colorway 1
 Zoom: 1:1

Machine format: Tajima
 Color changes: 4
 Stops: 5
 Trims: 77
 Appliqués: 0
 Left: 65.2 mm
 Right: 52.6 mm
 Up: 92.2 mm
 Down: 73.1 mm
 EndX: 0.00 in
 EndY: 0.00 in
 Area: 30.17 in²
 Max stitch: 7.0 mm
 Min stitch: 0.0 mm
 Max jump: 7.0 mm
 Total thread: 475.58ft
 Total bobbin: 151.44ft

Stop Sequence:

#	N#	Color	St.	Code	Name	Chart
1.	2		7,337		R255 G231 B182	
2.	3		6,257		R255 G218 B68	
3.	4		4,795		R255 G111 B38	
4.	5		305		R54 G153 B98	
5.	8		14,586	8	Black	Default



Production Worksheet

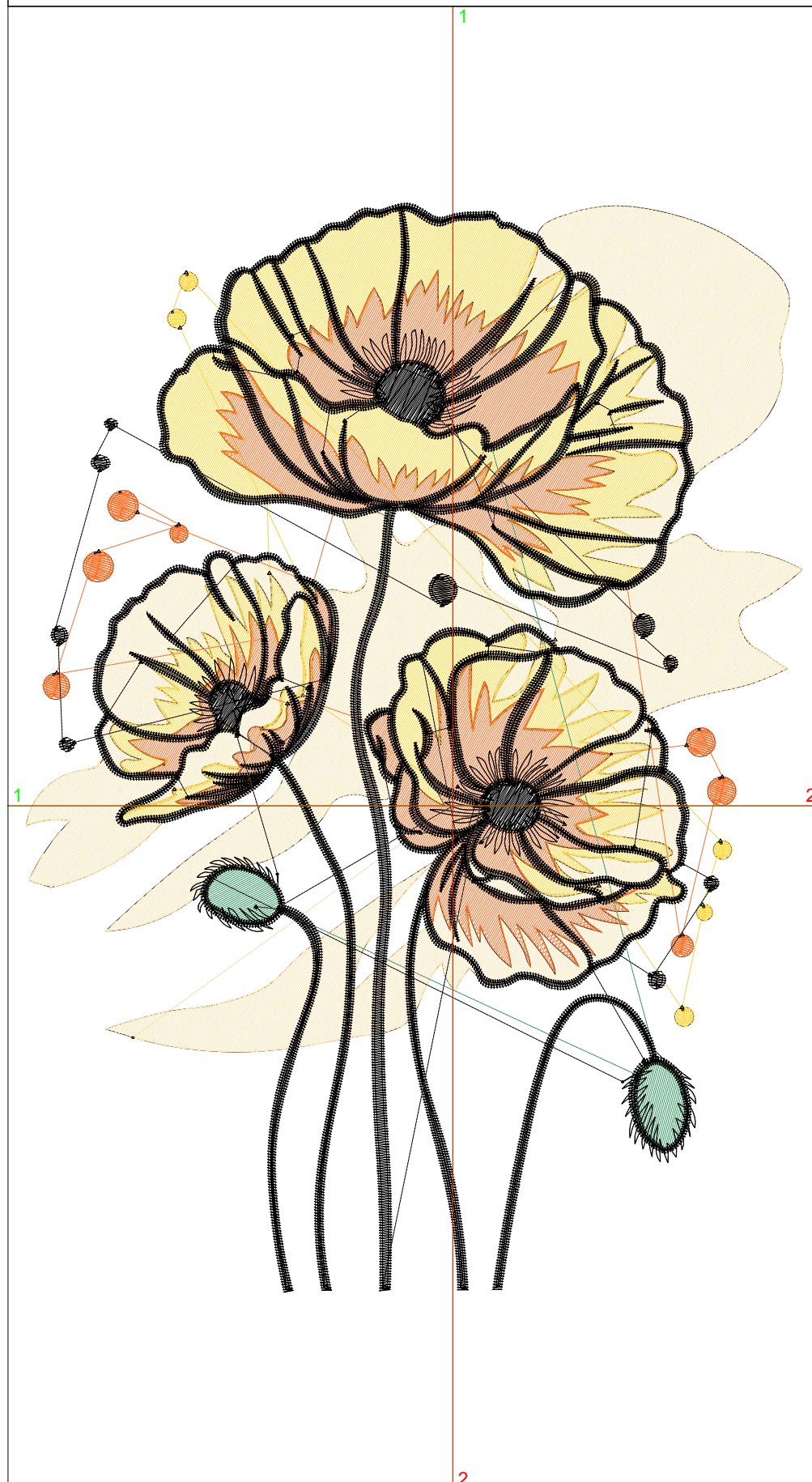
Wilcom EmbroideryStudio - Designing



Design: **7**

Title:

Stitches: 36,279
 Height: 7.01 in
 Width: 4.99 in
 Colors: 5
 Colorway: Colorway 1
 Zoom: 1:1



Machine format: Tajima
 Color changes: 4
 Stops: 5
 Trims: 80
 Appliqués: 0
 Left: 69.7 mm
 Right: 57.1 mm
 Up: 98.5 mm
 Down: 79.5 mm
 EndX: 0.00 in
 EndY: 0.00 in
 Area: 34.99 in²
 Max stitch: 6.9 mm
 Min stitch: 0.0 mm
 Max jump: 6.9 mm
 Total thread: 529.00ft
 Total bobbin: 171.44ft

Stop Sequence:

#	N#	Color	St.	Code	Name	Chart
1.	2		8,226		R255 G231 B182	
2.	3		6,797		R255 G218 B68	
3.	4		5,263		R255 G111 B38	
4.	5		331		R54 G153 B98	
5.	8		15,660	8	Black	Default

Production Worksheet

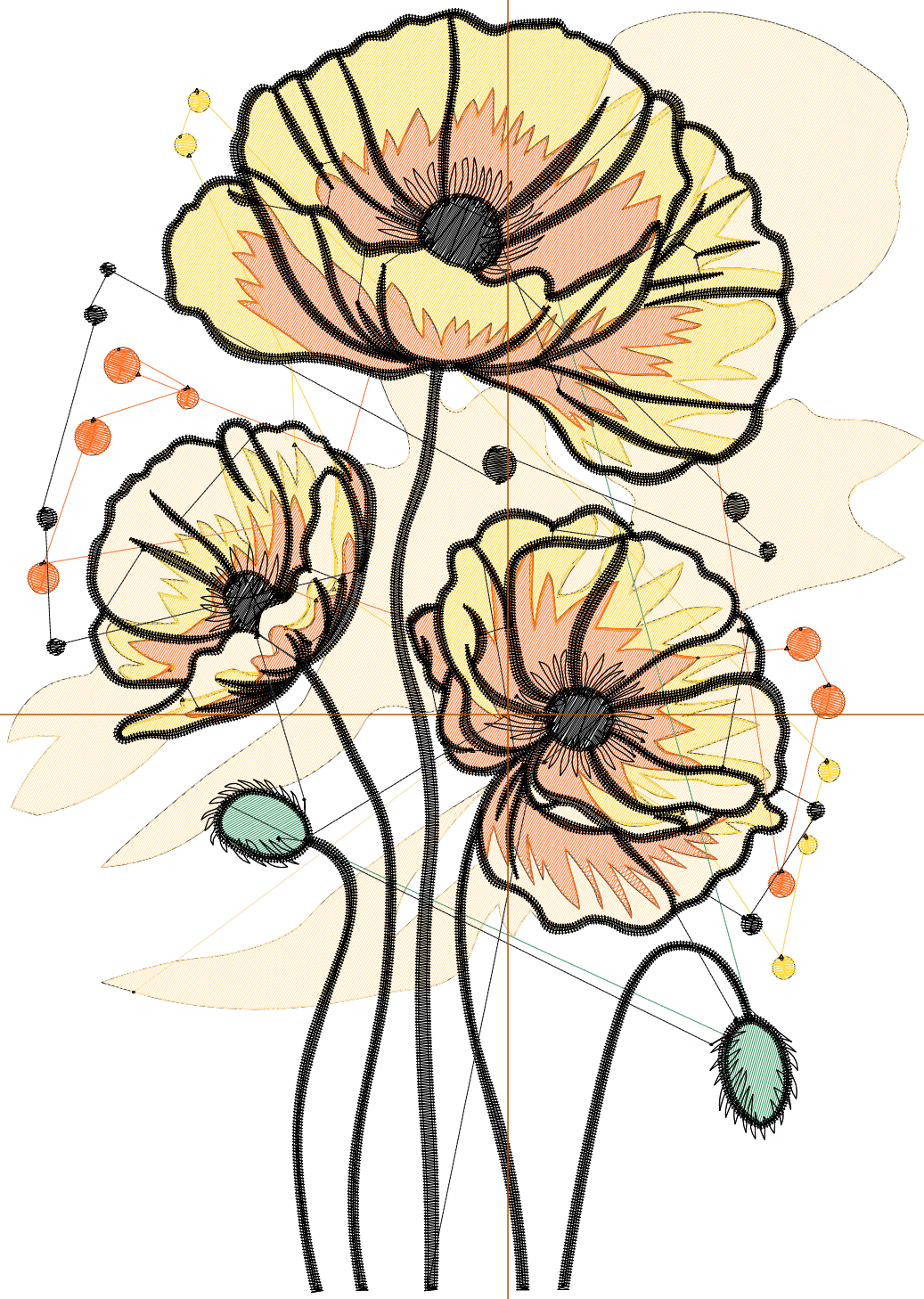
Wilcom EmbroideryStudio - Designing



Design: **7**

Title:

Stitches: 39,542
Height: 7.51 in
Width: 5.35 in
Colors: 5
Colorway: Colorway 1
Zoom: 1:1



Production Worksheet

Wilcom EmbroideryStudio - Designing



Design: **7**

Title:

Stitches: 39,542
 Height: 7.51 in
 Width: 5.35 in
 Colors: 5
 Colorway: Colorway 1
 Zoom: 1:1

Machine format: Tajima
 Color changes: 4
 Stops: 5
 Trims: 80
 Appliqués: 0
 Left: 74.2 mm
 Right: 61.6 mm
 Up: 104.9 mm
 Down: 85.8 mm
 EndX: 0.00 in
 EndY: 0.00 in
 Area 40.16 in²
 Max stitch: 7.0 mm
 Min stitch: 0.0 mm
 Max jump: 7.0 mm
 Total thread: 588.10ft
 Total bobbin: 193.78ft

Stop Sequence:

#	N#	Color	St.	Code	Name	Chart
1.	2		9,143		R255 G231 B182	
2.	3		7,481		R255 G218 B68	
3.	4		5,804		R255 G111 B38	
4.	5		366		R54 G153 B98	
5.	8		16,746	8	Black	Default