

Production Worksheet

Wilcom EmbroideryStudio - Designing



Design: **3**

Title:

Stitches: 30,796
 Height: 3.51 in
 Width: 3.40 in
 Colors: 11
 Colorway: Colorway 1
 Zoom: 1:1

Machine format: Tajima
 Color changes: 11
 Stops: 12
 Trims: 180
 Appliqués: 0
 Left: 45.1 mm
 Right: 41.3 mm
 Up: 42.3 mm
 Down: 46.7 mm
 EndX: 0.00 in
 EndY: 0.00 in
 Area: 11.92 in²
 Max stitch: 7.0 mm
 Min stitch: 0.0 mm
 Max jump: 7.0 mm
 Total thread: 401.00ft
 Total bobbin: 115.55ft

Stop Sequence:

#	N#	Color	St.	Code	Name	Chart
1.	1		116	1	Dark Green	Default
2.	3		4,560		R242 G242 B242	
3.	14		104	14	Brown	Default
4.	4		1,172		R255 G115 B0	
5.	18		839	18	Grey	Default
6.	6		1,877		R255 G0 B0	
7.	14		8,289	14	Brown	Default
8.	8		5,194	8	Black	Default
9.	2		861		R51 G34 B17	
10.	5		3,809		R255 G2 B145	
11.	9		3,416	9	White	Default
12.	12		557	12	Orange	Default



Production Worksheet

Wilcom EmbroideryStudio - Designing



Design: **4**

Title:

Stitches: 35,669
 Height: 4.01 in
 Width: 3.88 in
 Colors: 11
 Colorway: Colorway 1
 Zoom: 1:1

Machine format: Tajima
 Color changes: 11
 Stops: 12
 Trims: 193
 Appliqués: 0
 Left: 51.2 mm
 Right: 47.4 mm
 Up: 48.7 mm
 Down: 53.1 mm
 EndX: 0.00 in
 EndY: 0.00 in
 Area: 15.57 in²
 Max stitch: 7.3 mm
 Min stitch: 0.0 mm
 Max jump: 7.0 mm
 Total thread: 480.94ft
 Total bobbin: 143.97ft

Stop Sequence:

#	N#	Color	St.	Code	Name	Chart
1.	1		137	1	Dark Green	Default
2.	3		5,821	R242 G242 B242		
3.	14		106	14	Brown	Default
4.	4		1,457	R255 G115 B0		
5.	18		899	18	Grey	Default
6.	6		2,115	R255 G0 B0		
7.	14		9,570	14	Brown	Default
8.	8		5,850	8	Black	Default
9.	2		929	R51 G34 B17		
10.	5		4,391	R255 G2 B145		
11.	9		3,780	9	White	Default
12.	12		612	12	Orange	Default



Production Worksheet

Wilcom EmbroideryStudio - Designing



Design: **4**

Title:

Stitches: 40,703
 Height: 4.51 in
 Width: 4.37 in
 Colors: 11
 Colorway: Colorway 1
 Zoom: 1:1

Machine format: Tajima
 Color changes: 11
 Stops: 12
 Trims: 200
 Appliqués: 0
 Left: 57.4 mm
 Right: 53.6 mm
 Up: 55.1 mm
 Down: 59.4 mm
 EndX: 0.00 in
 EndY: 0.00 in
 Area: 19.71 in²
 Max stitch: 8.3 mm
 Min stitch: 0.0 mm
 Max jump: 7.0 mm
 Total thread: 567.88ft
 Total bobbin: 175.92ft

Stop Sequence:

#	N#	Color	St.	Code	Name	Chart
1.	1		159	1	Dark Green	Default
2.	3		7,163	R242 G242 B242		
3.	14		128	14	Brown	Default
4.	4		1,704	R255 G115 B0		
5.	18		974	18	Grey	Default
6.	6		2,324	R255 G0 B0		
7.	14		10,816	14	Brown	Default
8.	8		6,606	8	Black	Default
9.	2		981	R51 G34 B17		
10.	5		5,011	R255 G2 B145		
11.	9		4,169	9	White	Default
12.	12		666	12	Orange	Default



Production Worksheet

Wilcom EmbroideryStudio - Designing



Design: **5**

Title:

Stitches: 46,171
Height: 5.01 in
Width: 4.85 in
Colors: 11
Colorway: Colorway 1
Zoom: 1:1

Machine format: Tajima
Color changes: 11
Stops: 12
Trims: 202
Appliqués: 0
Left: 63.5 mm
Right: 59.8 mm
Up: 61.5 mm
Down: 65.8 mm
EndX: 0.00 in
EndY: 0.00 in
Area: 24.33 in²
Max stitch: 9.3 mm
Min stitch: 0.0 mm
Max jump: 6.9 mm
Total thread: 662.30ft
Total bobbin: 210.61ft

Stop Sequence:

#	N#	Color	St.	Code	Name	Chart
1.	1		174	1	Dark Green	Default
2.	3		8,636	R242 G242 B242		
3.	14		136	14	Brown	Default
4.	4		2,066	R255 G115 B0		
5.	18		1,052	18	Grey	Default
6.	6		2,535	R255 G0 B0		
7.	14		12,118	14	Brown	Default
8.	8		7,362	8	Black	Default
9.	2		1,009	R51 G34 B17		
10.	5		5,822	R255 G2 B145		
11.	9		4,547	9	White	Default
12.	12		712	12	Orange	Default



Production Worksheet

Wilcom EmbroideryStudio - Designing



Design: **5**

Title:

Stitches: 51,786
Height: 5.51 in
Width: 5.34 in
Colors: 11
Colorway: Colorway 1
Zoom: 1:1



Production Worksheet

Wilcom EmbroideryStudio - Designing



Design: **5**

Title:

Stitches: 51,786
 Height: 5.51 in
 Width: 5.34 in
 Colors: 11
 Colorway: Colorway 1
 Zoom: 1:1

Machine format: Tajima
 Color changes: 11
 Stops: 12
 Trims: 210
 Appliqués: 0
 Left: 69.7 mm
 Right: 66.0 mm
 Up: 67.7 mm
 Down: 72.1 mm
 EndX: 0.00 in
 EndY: 0.00 in
 Area 29.41 in²
 Max stitch: 10.4 mm
 Min stitch: 0.0 mm
 Max jump: 7.0 mm
 Total thread: 763.48ft
 Total bobbin: 248.74ft

Stop Sequence:

#	N#	Color	St.	Code	Name	Chart
1.	1		191	1	Dark Green	Default
2.	3		10,260		R242 G242 B242	
3.	14		152	14	Brown	Default
4.	4		2,409		R255 G115 B0	
5.	18		1,103	18	Grey	Default
6.	6		2,772		R255 G0 B0	
7.	14		13,444	14	Brown	Default
8.	8		8,058	8	Black	Default
9.	2		1,051		R51 G34 B17	
10.	5		6,603		R255 G2 B145	
11.	9		4,958	9	White	Default
12.	12		783	12	Orange	Default

Production Worksheet

Wilcom EmbroideryStudio - Designing



Design: **6**

Title:

Stitches: 57,789
Height: 6.01 in
Width: 5.83 in
Colors: 11
Colorway: Colorway 1
Zoom: 1:1



Production Worksheet

Wilcom EmbroideryStudio - Designing



Design: **6**

Title:

Stitches: 57,789
 Height: 6.01 in
 Width: 5.83 in
 Colors: 11
 Colorway: Colorway 1
 Zoom: 1:1

Machine format: Tajima
 Color changes: 11
 Stops: 12
 Trims: 212
 Appliqués: 0
 Left: 75.8 mm
 Right: 72.2 mm
 Up: 74.2 mm
 Down: 78.4 mm
 EndX: 0.00 in
 EndY: 0.00 in
 Area 35.01 in²
 Max stitch: 11.3 mm
 Min stitch: 0.0 mm
 Max jump: 7.0 mm
 Total thread: 872.91ft
 Total bobbin: 290.24ft

Stop Sequence:

#	N#	Color	St.	Code	Name	Chart
1.	1		212	1	Dark Green	Default
2.	3		12,166		R242 G242 B242	
3.	14		179	14	Brown	Default
4.	4		2,801		R255 G115 B0	
5.	18		1,168	18	Grey	Default
6.	6		2,988		R255 G0 B0	
7.	14		14,745	14	Brown	Default
8.	8		8,818	8	Black	Default
9.	2		1,076		R51 G34 B17	
10.	5		7,439		R255 G2 B145	
11.	9		5,352	9	White	Default
12.	12		843	12	Orange	Default

Production Worksheet

Wilcom EmbroideryStudio - Designing



Design: **6**

Title:

Stitches: 64,027
Height: 6.51 in
Width: 6.31 in
Colors: 11
Colorway: Colorway 1
Zoom: 1:1



Production Worksheet

Wilcom EmbroideryStudio - Designing



Design: **6**

Title:

Stitches: 64,027
 Height: 6.51 in
 Width: 6.31 in
 Colors: 11
 Colorway: Colorway 1
 Zoom: 1:1

Machine format: Tajima
 Color changes: 11
 Stops: 12
 Trims: 216
 Appliqués: 0
 Left: 82.0 mm
 Right: 78.2 mm
 Up: 80.5 mm
 Down: 84.8 mm
 EndX: 0.00 in
 EndY: 0.00 in
 Area 41.07 in²
 Max stitch: 11.9 mm
 Min stitch: 0.0 mm
 Max jump: 7.0 mm
 Total thread: 989.33ft
 Total bobbin: 334.97ft

Stop Sequence:

#	N#	Color	St.	Code	Name	Chart
1.	1		235	1	Dark Green	Default
2.	3		14,153		R242 G242 B242	
3.	14		189	14	Brown	Default
4.	4		3,177		R255 G115 B0	
5.	18		1,225	18	Grey	Default
6.	6		3,198		R255 G0 B0	
7.	14		16,233	14	Brown	Default
8.	8		9,578	8	Black	Default
9.	2		1,107		R51 G34 B17	
10.	5		8,287		R255 G2 B145	
11.	9		5,740	9	White	Default
12.	12		903	12	Orange	Default

Production Worksheet

Wilcom EmbroideryStudio - Designing



Design: 7

Title:

Stitches: 70,315
Height: 7.01 in
Width: 6.80 in
Colors: 11
Colorway: Colorway 1
Zoom: 1:1



Production Worksheet

Wilcom EmbroideryStudio - Designing



Design: **7**

Title:

Stitches: 70,315
 Height: 7.01 in
 Width: 6.80 in
 Colors: 11
 Colorway: Colorway 1
 Zoom: 1:1

Machine format: Tajima
 Color changes: 11
 Stops: 12
 Trims: 217
 Appliqués: 0
 Left: 88.1 mm
 Right: 84.5 mm
 Up: 86.9 mm
 Down: 91.2 mm
 EndX: 0.00 in
 EndY: 0.00 in
 Area 47.63 in²
 Max stitch: 11.7 mm
 Min stitch: 0.0 mm
 Max jump: 7.0 mm
 Total thread: 1110.63ft
 Total bobbin: 382.40ft

Stop Sequence:

#	N#	Color	St.	Code	Name	Chart
1.	1		266	1	Dark Green	Default
2.	3		16,089		R242 G242 B242	
3.	14		210	14	Brown	Default
4.	4		3,670		R255 G115 B0	
5.	18		1,273	18	Grey	Default
6.	6		3,422		R255 G0 B0	
7.	14		17,628	14	Brown	Default
8.	8		10,326	8	Black	Default
9.	2		1,131		R51 G34 B17	
10.	5		9,182		R255 G2 B145	
11.	9		6,145	9	White	Default
12.	12		971	12	Orange	Default

Production Worksheet

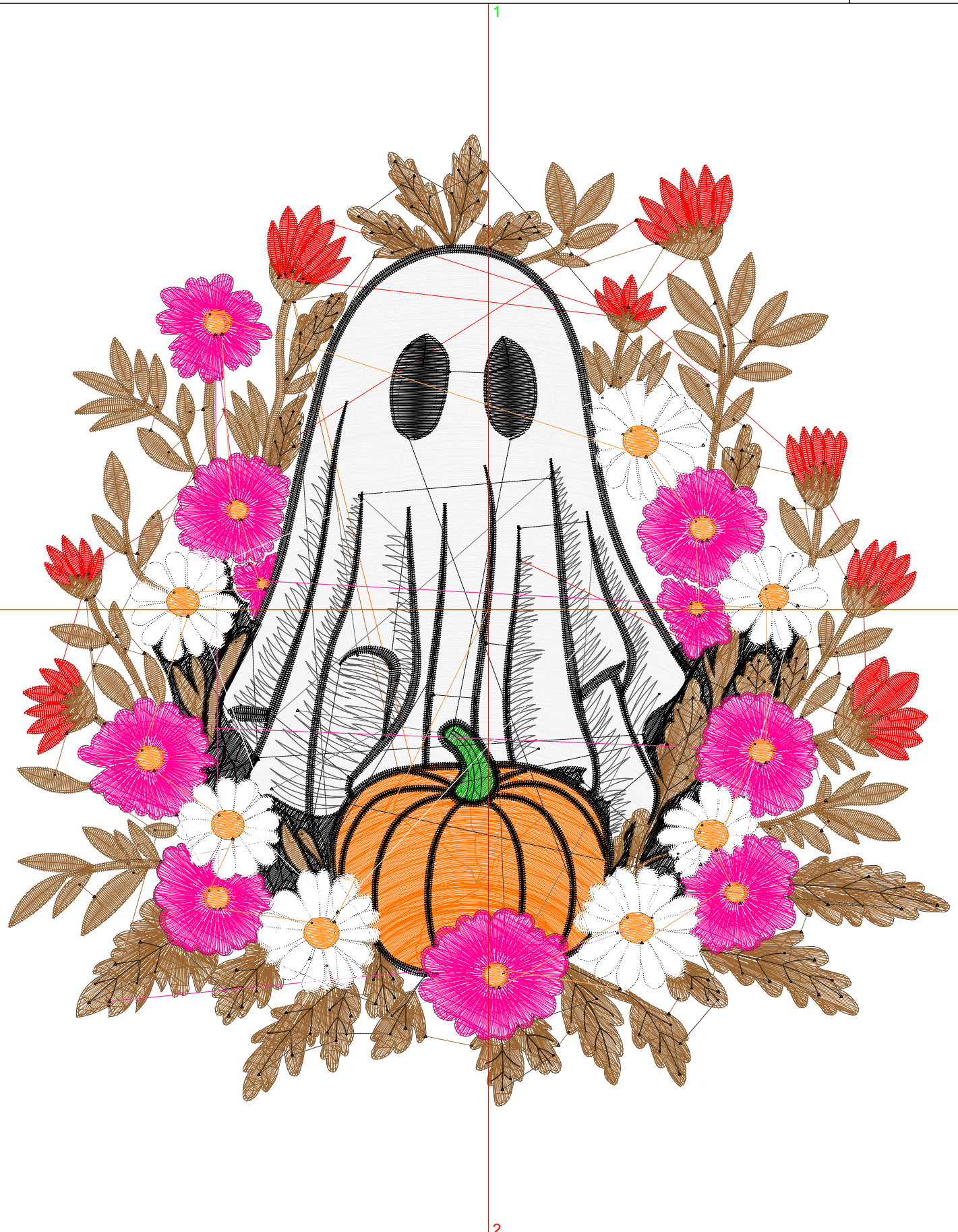
Wilcom EmbroideryStudio - Designing



Design: 7

Title:

Stitches: 77,238
Height: 7.51 in
Width: 7.28 in
Colors: 11
Colorway: Colorway 1
Zoom: 1:1



Production Worksheet

Wilcom EmbroideryStudio - Designing



Design: **7**

Title:

Stitches: 77,238
 Height: 7.51 in
 Width: 7.28 in
 Colors: 11
 Colorway: Colorway 1
 Zoom: 1:1

Machine format: Tajima
 Color changes: 11
 Stops: 12
 Trims: 220
 Appliqués: 0
 Left: 94.3 mm
 Right: 90.6 mm
 Up: 93.2 mm
 Down: 97.5 mm
 EndX: 0.00 in
 EndY: 0.00 in
 Area 54.65 in²
 Max stitch: 11.3 mm
 Min stitch: 0.0 mm
 Max jump: 7.0 mm
 Total thread: 1243.25ft
 Total bobbin: 434.07ft

Stop Sequence:

#	N#	Color	St.	Code	Name	Chart
1.	1		290	1	Dark Green	Default
2.	3		18,470		R242 G242 B242	
3.	14		219	14	Brown	Default
4.	4		4,055		R255 G115 B0	
5.	18		1,322	18	Grey	Default
6.	6		3,647		R255 G0 B0	
7.	14		19,224	14	Brown	Default
8.	8		11,085	8	Black	Default
9.	2		1,158		R51 G34 B17	
10.	5		10,177		R255 G2 B145	
11.	9		6,563	9	White	Default
12.	12		1,026	12	Orange	Default