

Production Worksheet

Wilcom EmbroideryStudio - Designing



Design: **5**

Title:

Stitches: 62,730
Height: 5.43 in
Width: 5.51 in
Colors: 14
Colorway: Colorway 1
Zoom: 1:1



1

1

2

2

Production Worksheet

Wilcom EmbroideryStudio - Designing



Design: **5**

Title:

Stitches: 62,730
 Height: 5.43 in
 Width: 5.51 in
 Colors: 14
 Colorway: Colorway 1
 Zoom: 1:1

Machine format: Tajima
 Color changes: 16
 Stops: 17
 Trims: 301
 Appliqués: 0
 Left: 79.0 mm
 Right: 61.0 mm
 Up: 80.5 mm
 Down: 57.4 mm
 EndX: 0.00 in
 EndY: 0.00 in
 Area 29.92 in²
 Max stitch: 10.5 mm
 Min stitch: 0.0 mm
 Max jump: 7.0 mm
 Total thread: 794.40ft
 Total bobbin: 223.53ft

Stop Sequence:

#	N#	Color	St.	Code	Name	Chart
1.	5		5,411	5	Aqua	Default
2.	4		364		R191 G191 B191	
3.	18		259	18	Grey	Default
4.	14		188	14	Brown	Default
5.	12		304	12	Orange	Default
6.	7		213		R255 G111 B0	
7.	3		2,980		R32 G128 B128	
8.	18		7,660	18	Grey	Default
9.	9		4,908	9	White	Default
10.	10		15,178		R0 G0 B0	
11.	6		461		R255 G51 B177	
12.	1		3,229	1	Dark Green	Default
13.	10		12,908		R0 G0 B0	
14.	15		3,260	15	Pink	Default
15.	8		3,161		R217 G0 B0	
16.	11		1,778	11	Dark Red	Default
17.	1		466	1	Dark Green	Default

Production Worksheet

Wilcom EmbroideryStudio - Designing



Design: **6**

Title:

Stitches: 68,681
Height: 5.92 in
Width: 6.01 in
Colors: 14
Colorway: Colorway 1
Zoom: 1:1



Production Worksheet

Wilcom EmbroideryStudio - Designing



Design: **6**

Title:

Stitches: 68,681
 Height: 5.92 in
 Width: 6.01 in
 Colors: 14
 Colorway: Colorway 1
 Zoom: 1:1

Machine format: Tajima
 Color changes: 16
 Stops: 17
 Trims: 308
 Appliqués: 0
 Left: 85.3 mm
 Right: 67.4 mm
 Up: 86.8 mm
 Down: 63.6 mm
 EndX: 0.00 in
 EndY: 0.00 in
 Area 35.60 in²
 Max stitch: 11.4 mm
 Min stitch: 0.0 mm
 Max jump: 7.0 mm
 Total thread: 889.41ft
 Total bobbin: 256.69ft

Stop Sequence:

#	N#	Color	St.	Code	Name	Chart
1.	5		6,125	5	Aqua	Default
2.	4		416		R191 G191 B191	
3.	18		286	18	Grey	Default
4.	14		209	14	Brown	Default
5.	12		313	12	Orange	Default
6.	7		228		R255 G111 B0	
7.	3		3,353		R32 G128 B128	
8.	18		8,457	18	Grey	Default
9.	9		5,375	9	White	Default
10.	10		16,534		R0 G0 B0	
11.	6		501		R255 G51 B177	
12.	1		3,585	1	Dark Green	Default
13.	10		13,927		R0 G0 B0	
14.	15		3,597	15	Pink	Default
15.	8		3,399		R217 G0 B0	
16.	11		1,865	11	Dark Red	Default
17.	1		509	1	Dark Green	Default

Production Worksheet

Wilcom EmbroideryStudio - Designing



Design: **6**

Title:

Stitches: 75,159
Height: 6.41 in
Width: 6.51 in
Colors: 14
Colorway: Colorway 1
Zoom: 1:1



Production Worksheet

Wilcom EmbroideryStudio - Designing



Design: **6**

Title:

Stitches: 75,159
 Height: 6.41 in
 Width: 6.51 in
 Colors: 14
 Colorway: Colorway 1
 Zoom: 1:1

Machine format: Tajima
 Color changes: 16
 Stops: 17
 Trims: 321
 Appliqués: 0
 Left: 91.7 mm
 Right: 73.7 mm
 Up: 93.0 mm
 Down: 69.9 mm
 EndX: 0.00 in
 EndY: 0.00 in
 Area 41.77 in²
 Max stitch: 7.0 mm
 Min stitch: 0.0 mm
 Max jump: 7.0 mm
 Total thread: 993.49ft
 Total bobbin: 293.18ft

Stop Sequence:

#	N#	Color	St.	Code	Name	Chart
1.	5		6,847	5	Aqua	Default
2.	4		448		R191 G191 B191	
3.	18		310	18	Grey	Default
4.	14		221	14	Brown	Default
5.	12		362	12	Orange	Default
6.	7		250		R255 G111 B0	
7.	3		3,706		R32 G128 B128	
8.	18		9,362	18	Grey	Default
9.	9		5,916	9	White	Default
10.	10		17,983		R0 G0 B0	
11.	6		541		R255 G51 B177	
12.	1		3,924	1	Dark Green	Default
13.	10		14,965		R0 G0 B0	
14.	15		4,010	15	Pink	Default
15.	8		3,781		R217 G0 B0	
16.	11		1,963	11	Dark Red	Default
17.	1		568	1	Dark Green	Default

Production Worksheet

Wilcom EmbroideryStudio - Designing



Design: 7

Title:

Stitches: 81,580
Height: 6.91 in
Width: 7.01 in
Colors: 14
Colorway: Colorway 1
Zoom: 1:1



Production Worksheet

Wilcom EmbroideryStudio - Designing



Design: **7**

Title:

Stitches: 81,580
 Height: 6.91 in
 Width: 7.01 in
 Colors: 14
 Colorway: Colorway 1
 Zoom: 1:1

Machine format: Tajima
 Color changes: 16
 Stops: 17
 Trims: 334
 Appliqués: 0
 Left: 98.0 mm
 Right: 80.1 mm
 Up: 99.3 mm
 Down: 76.1 mm
 EndX: 0.00 in
 EndY: 0.00 in
 Area 48.44 in²
 Max stitch: 7.0 mm
 Min stitch: 0.0 mm
 Max jump: 7.0 mm
 Total thread: 1099.48ft
 Total bobbin: 331.02ft

Stop Sequence:

#	N#	Color	St.	Code	Name	Chart
1.	5		7,658	5	Aqua	Default
2.	4		481		R191 G191 B191	
3.	18		337	18	Grey	Default
4.	14		241	14	Brown	Default
5.	12		364	12	Orange	Default
6.	7		267		R255 G111 B0	
7.	3		4,118		R32 G128 B128	
8.	18		10,268	18	Grey	Default
9.	9		6,452	9	White	Default
10.	10		19,395		R0 G0 B0	
11.	6		588		R255 G51 B177	
12.	1		4,361	1	Dark Green	Default
13.	10		15,922		R0 G0 B0	
14.	15		4,392	15	Pink	Default
15.	8		4,056		R217 G0 B0	
16.	11		2,064	11	Dark Red	Default
17.	1		614	1	Dark Green	Default

Production Worksheet

Wilcom EmbroideryStudio - Designing



Design: 7

Title:

Stitches: 88,388
Height: 7.40 in
Width: 7.51 in
Colors: 14
Colorway: Colorway 1
Zoom: 1:1



Production Worksheet

Wilcom EmbroideryStudio - Designing



Design: **7**

Title:

Stitches: 88,388
 Height: 7.40 in
 Width: 7.51 in
 Colors: 14
 Colorway: Colorway 1
 Zoom: 1:1

Machine format: Tajima
 Color changes: 16
 Stops: 17
 Trims: 344
 Appliqués: 0
 Left: 104.4 mm
 Right: 86.4 mm
 Up: 105.6 mm
 Down: 82.4 mm
 EndX: 0.00 in
 EndY: 0.00 in
 Area 55.59 in²
 Max stitch: 7.0 mm
 Min stitch: 0.0 mm
 Max jump: 7.0 mm
 Total thread: 1214.10ft
 Total bobbin: 372.48ft

Stop Sequence:

#	N#	Color	St.	Code	Name	Chart
1.	5		8,440	5	Aqua	Default
2.	4		516		R191 G191 B191	
3.	18		367	18	Grey	Default
4.	14		258	14	Brown	Default
5.	12		432	12	Orange	Default
6.	7		290		R255 G111 B0	
7.	3		4,541		R32 G128 B128	
8.	18		11,205	18	Grey	Default
9.	9		7,045	9	White	Default
10.	10		20,834		R0 G0 B0	
11.	6		654		R255 G51 B177	
12.	1		4,812	1	Dark Green	Default
13.	10		16,960		R0 G0 B0	
14.	15		4,727	15	Pink	Default
15.	8		4,482		R217 G0 B0	
16.	11		2,157	11	Dark Red	Default
17.	1		666	1	Dark Green	Default

Production Worksheet

Wilcom EmbroideryStudio - Designing



Design: 8

Title:

Stitches: 95,052
Height: 7.89 in
Width: 8.01 in
Colors: 14
Colorway: Colorway 1
Zoom: 1:1



Production Worksheet

Wilcom EmbroideryStudio - Designing



Design: **8**

Title:

Stitches: 95,052
 Height: 7.89 in
 Width: 8.01 in
 Colors: 14
 Colorway: Colorway 1
 Zoom: 1:1

Machine format: Tajima
 Color changes: 16
 Stops: 17
 Trims: 354
 Appliqués: 0
 Left: 110.7 mm
 Right: 92.8 mm
 Up: 111.8 mm
 Down: 88.6 mm
 EndX: 0.00 in
 EndY: 0.00 in
 Area 63.24 in²
 Max stitch: 7.0 mm
 Min stitch: 0.0 mm
 Max jump: 7.0 mm
 Total thread: 1328.04ft
 Total bobbin: 414.08ft

Stop Sequence:

#	N#	Color	St.	Code	Name	Chart
1.	5		9,214	5	Aqua	Default
2.	4		552		R191 G191 B191	
3.	18		397	18	Grey	Default
4.	14		286	14	Brown	Default
5.	12		419	12	Orange	Default
6.	7		310		R255 G111 B0	
7.	3		4,945		R32 G128 B128	
8.	18		12,112	18	Grey	Default
9.	9		7,662	9	White	Default
10.	10		22,263		R0 G0 B0	
11.	6		691		R255 G51 B177	
12.	1		5,288	1	Dark Green	Default
13.	10		18,032		R0 G0 B0	
14.	15		5,155	15	Pink	Default
15.	8		4,751		R217 G0 B0	
16.	11		2,255	11	Dark Red	Default
17.	1		718	1	Dark Green	Default

Production Worksheet

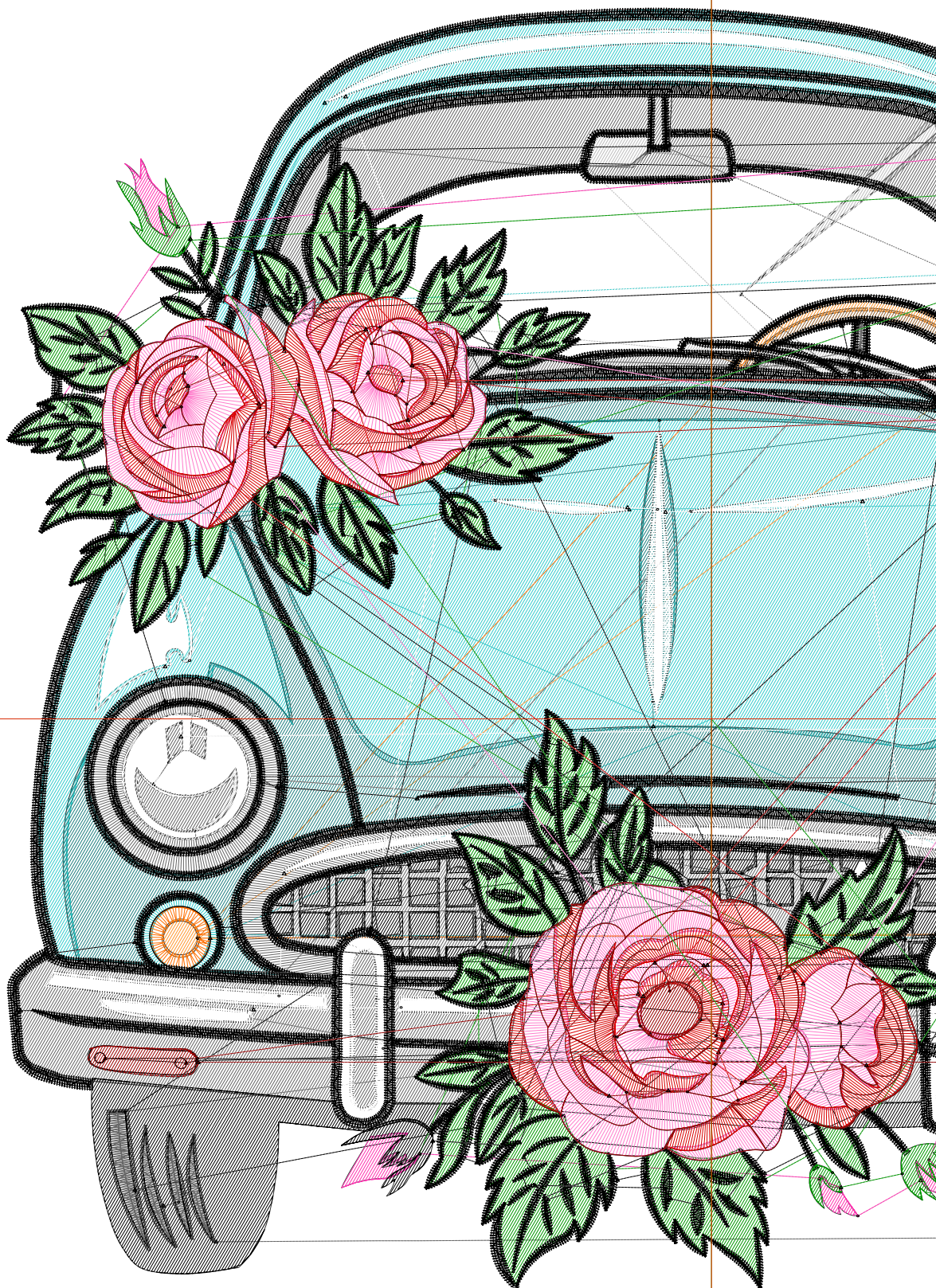
Wilcom EmbroideryStudio - Designing



Design: 8

Title:

Stitches: 101,870
Height: 8.39 in
Width: 8.51 in
Colors: 14
Colorway: Colorway 1
Zoom: 1:1



1 1
1 1

2 2
2 2

Production Worksheet

Wilcom EmbroideryStudio - Designing

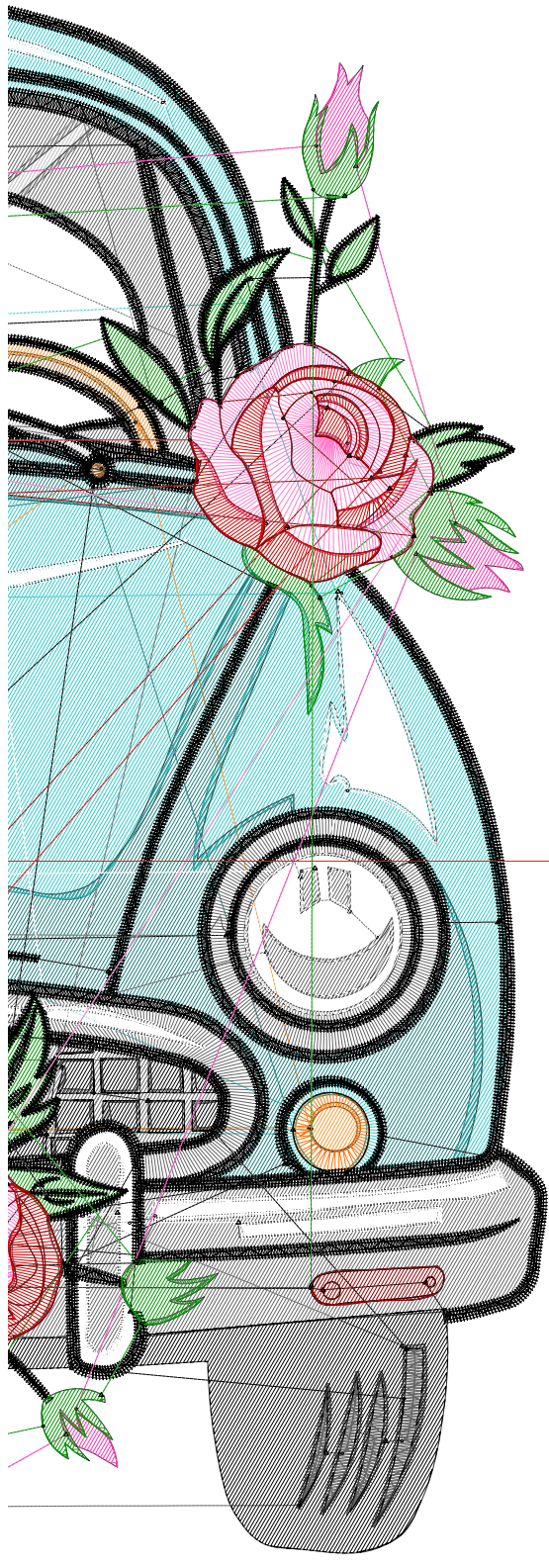


Design: **8**

Title:

Stitches: 101,870
 Height: 8.39 in
 Width: 8.51 in
 Colors: 14
 Colorway: Colorway 1
 Zoom: 1:1

1 1
 1 1



Machine format: Tajima
 Color changes: 16
 Stops: 17
 Trims: 364
 Appliqués: 0
 Left: 117.1 mm
 Right: 99.1 mm
 Up: 118.1 mm
 Down: 94.9 mm
 EndX: 0.00 in
 EndY: 0.00 in
 Area: 71.38 in²
 Max stitch: 7.0 mm
 Min stitch: 0.0 mm
 Max jump: 7.0 mm
 Total thread: 1449.31ft
 Total bobbin: 459.43ft

Stop Sequence:

#	N#	Color	St.	Code	Name	Chart
1.	5		10,158	5	Aqua	Default
2.	4		605		R191 G191 B191	
3.	18		422	18	Grey	Default
4.	14		299	14	Brown	Default
5.	12		460	12	Orange	Default
6.	7		332		R255 G111 B0	
7.	3		5,422		R32 G128 B128	
8.	18		12,996	18	Grey	Default
9.	9		8,246	9	White	Default
10.	10		23,731		R0 G0 B0	
11.	6		736		R255 G51 B177	
12.	1		5,652	1	Dark Green	Default
13.	10		19,036		R0 G0 B0	
14.	15		5,575	15	Pink	Default
15.	8		5,081		R217 G0 B0	
16.	11		2,365	11	Dark Red	Default
17.	1		752	1	Dark Green	Default

2 2
 2 2