

Production Worksheet

Wilcom EmbroideryStudio - Designing



Design: **3**

Title:

Stitches: 19,565
 Height: 3.50 in
 Width: 2.01 in
 Colors: 16
 Colorway: Colorway 1
 Zoom: 1:1

Machine format: Tajima
 Color changes: 15
 Stops: 16
 Trims: 128
 Appliqués: 0
 Left: 37.0 mm
 Right: 14.1 mm
 Up: 49.9 mm
 Down: 39.0 mm
 EndX: 0.00 in
 EndY: 0.00 in
 Area: 7.04 in²
 Max stitch: 11.7 mm
 Min stitch: 0.0 mm
 Max jump: 7.0 mm
 Total thread: 226.81ft
 Total bobbin: 55.22ft

Stop Sequence:

#	N#	Color	St.	Code	Name	Chart
1.	17		1,498		R240 G58 B48	
2.	1		1,393		R1 G99 B14	
3.	6		747		R194 G122 B29	
4.	5		459		R255 G159 B64	
5.	9		714		R255 G246 B210	
6.	3		270		R255 G234 B184	
7.	10		1,257		R19 G56 B51	
8.	13		649		R57 G120 B83	
9.	12		716		R138 G86 B69	
10.	14		231		R201 G120 B112	
11.	11		417	11	Dark Red	Default
12.	15		383		R255 G237 B215	
13.	7		240		R255 G187 B151	
14.	16		388		R255 G135 B167	
15.	4		254		R201 G37 B81	
16.	8		9,947	8	Black	Default



Production Worksheet

Wilcom EmbroideryStudio - Designing



Design: **4**

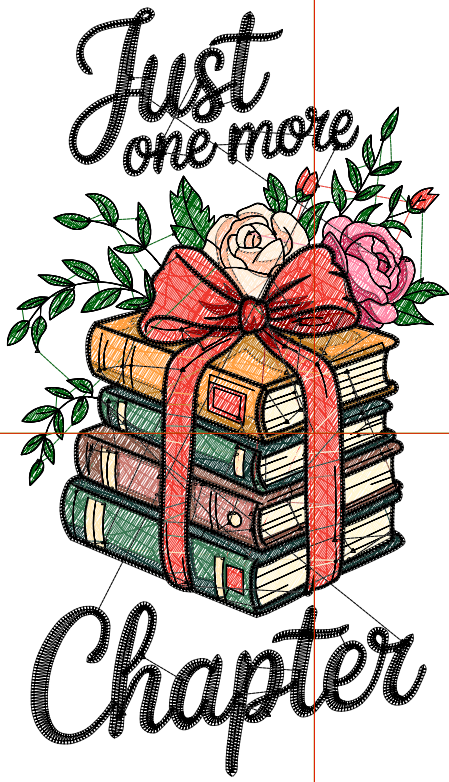
Title:

Stitches: 22,480
 Height: 4.00 in
 Width: 2.30 in
 Colors: 16
 Colorway: Colorway 1
 Zoom: 1:1

Machine format: Tajima
 Color changes: 15
 Stops: 16
 Trims: 133
 Appliqués: 0
 Left: 40.6 mm
 Right: 17.8 mm
 Up: 56.3 mm
 Down: 45.3 mm
 EndX: 0.00 in
 EndY: 0.00 in
 Area: 9.19 in²
 Max stitch: 11.2 mm
 Min stitch: 0.0 mm
 Max jump: 6.9 mm
 Total thread: 268.59ft
 Total bobbin: 68.64ft

Stop Sequence:

#	N#	Color	St.	Code	Name	Chart
1.	17		1,725		R240 G58 B48	
2.	1		1,622		R1 G99 B14	
3.	6		908		R194 G122 B29	
4.	5		552		R255 G159 B64	
5.	9		829		R255 G246 B210	
6.	3		316		R255 G234 B184	
7.	10		1,489		R19 G56 B51	
8.	13		747		R57 G120 B83	
9.	12		858		R138 G86 B69	
10.	14		258		R201 G120 B112	
11.	11		488	11	Dark Red	Default
12.	15		426		R255 G237 B215	
13.	7		284		R255 G187 B151	
14.	16		473		R255 G135 B167	
15.	4		325		R201 G37 B81	
16.	8		11,178	8	Black	Default



Production Worksheet

Wilcom EmbroideryStudio - Designing



Design: **4**

Title:

Stitches: 25,395
 Height: 4.50 in
 Width: 2.59 in
 Colors: 16
 Colorway: Colorway 1
 Zoom: 1:1

Machine format: Tajima
 Color changes: 15
 Stops: 16
 Trims: 140
 Appliqués: 0
 Left: 44.2 mm
 Right: 21.4 mm
 Up: 62.6 mm
 Down: 51.7 mm
 EndX: 0.00 in
 EndY: 0.00 in
 Area: 11.63 in²
 Max stitch: 10.6 mm
 Min stitch: 0.0 mm
 Max jump: 6.9 mm
 Total thread: 311.99ft
 Total bobbin: 83.03ft

Stop Sequence:

#	N#	Color	St.	Code	Name	Chart
1.	17		1,993		R240 G58 B48	
2.	1		1,927		R1 G99 B14	
3.	6		1,016		R194 G122 B29	
4.	5		623		R255 G159 B64	
5.	9		971		R255 G246 B210	
6.	3		363		R255 G234 B184	
7.	10		1,692		R19 G56 B51	
8.	13		880		R57 G120 B83	
9.	12		978		R138 G86 B69	
10.	14		295		R201 G120 B112	
11.	11		571	11	Dark Red	Default
12.	15		481		R255 G237 B215	
13.	7		331		R255 G187 B151	
14.	16		526		R255 G135 B167	
15.	4		366		R201 G37 B81	
16.	8		12,380	8	Black	Default



Production Worksheet

Wilcom EmbroideryStudio - Designing



Design: **5**

Title:

Stitches: 28,432
 Height: 5.00 in
 Width: 2.87 in
 Colors: 16
 Colorway: Colorway 1
 Zoom: 1:1

Machine format: Tajima
 Color changes: 15
 Stops: 16
 Trims: 147
 Appliqués: 0
 Left: 47.9 mm
 Right: 25.1 mm
 Up: 68.9 mm
 Down: 58.0 mm
 EndX: 0.00 in
 EndY: 0.00 in
 Area: 14.36 in²
 Max stitch: 11.1 mm
 Min stitch: 0.0 mm
 Max jump: 7.0 mm
 Total thread: 359.12ft
 Total bobbin: 99.14ft

Stop Sequence:

#	N#	Color	St.	Code	Name	Chart
1.	17		2,360		R240 G58 B48	
2.	1		2,153		R1 G99 B14	
3.	6		1,155		R194 G122 B29	
4.	5		707		R255 G159 B64	
5.	9		1,109		R255 G246 B210	
6.	3		382		R255 G234 B184	
7.	10		1,947		R19 G56 B51	
8.	13		996		R57 G120 B83	
9.	12		1,078		R138 G86 B69	
10.	14		330		R201 G120 B112	
11.	11		652	11	Dark Red	Default
12.	15		557		R255 G237 B215	
13.	7		364		R255 G187 B151	
14.	16		592		R255 G135 B167	
15.	4		448		R201 G37 B81	
16.	8		13,600	8	Black	Default



Production Worksheet

Wilcom EmbroideryStudio - Designing

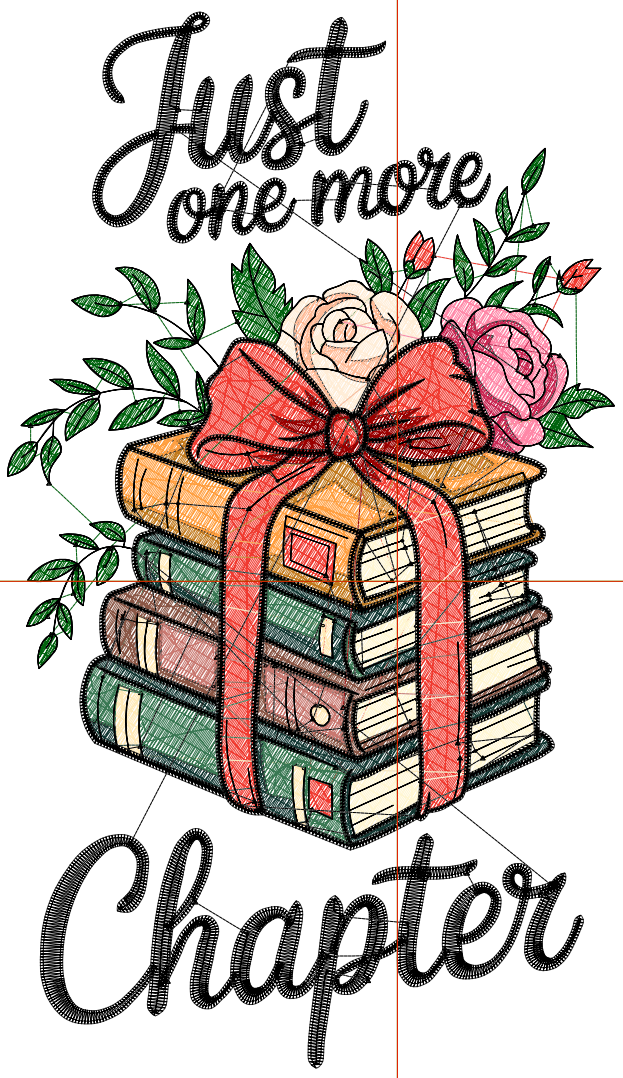


Design: **5**

Title:

Stitches: 31,470
 Height: 5.50 in
 Width: 3.16 in
 Colors: 16
 Colorway: Colorway 1
 Zoom: 1:1

Machine format: Tajima
 Color changes: 15
 Stops: 16
 Trims: 156
 Appliqués: 0
 Left: 51.5 mm
 Right: 28.7 mm
 Up: 75.3 mm
 Down: 64.4 mm
 EndX: 0.00 in
 EndY: 0.00 in
 Area: 17.38 in²
 Max stitch: 11.3 mm
 Min stitch: 0.0 mm
 Max jump: 6.9 mm
 Total thread: 408.50ft
 Total bobbin: 116.60ft



Stop Sequence:

#	N#	Color	St.	Code	Name	Chart
1.	17		2,718		R240 G58 B48	
2.	1		2,421		R1 G99 B14	
3.	6		1,264		R194 G122 B29	
4.	5		816		R255 G159 B64	
5.	9		1,263		R255 G246 B210	
6.	3		425		R255 G234 B184	
7.	10		2,134		R19 G56 B51	
8.	13		1,134		R57 G120 B83	
9.	12		1,196		R138 G86 B69	
10.	14		401		R201 G120 B112	
11.	11		711	11	Dark Red	Default
12.	15		636		R255 G237 B215	
13.	7		419		R255 G187 B151	
14.	16		664		R255 G135 B167	
15.	4		477		R201 G37 B81	
16.	8		14,789	8	Black	Default

Production Worksheet

Wilcom EmbroideryStudio - Designing



Design: **6**

Title:

Stitches: 34,606
 Height: 6.00 in
 Width: 3.45 in
 Colors: 16
 Colorway: Colorway 1
 Zoom: 1:1

Machine format: Tajima
 Color changes: 15
 Stops: 16
 Trims: 163
 Appliqués: 0
 Left: 55.2 mm
 Right: 32.4 mm
 Up: 81.6 mm
 Down: 70.7 mm
 EndX: 0.00 in
 EndY: 0.00 in
 Area: 20.68 in²
 Max stitch: 11.8 mm
 Min stitch: 0.0 mm
 Max jump: 6.9 mm
 Total thread: 460.98ft
 Total bobbin: 135.50ft

Stop Sequence:

#	N#	Color	St.	Code	Name	Chart
1.	17		3,073		R240 G58 B48	
2.	1		2,737		R1 G99 B14	
3.	6		1,388		R194 G122 B29	
4.	5		924		R255 G159 B64	
5.	9		1,425		R255 G246 B210	
6.	3		474		R255 G234 B184	
7.	10		2,343		R19 G56 B51	
8.	13		1,229		R57 G120 B83	
9.	12		1,336		R138 G86 B69	
10.	14		420		R201 G120 B112	
11.	11		805	11	Dark Red	Default
12.	15		703		R255 G237 B215	
13.	7		456		R255 G187 B151	
14.	16		756		R255 G135 B167	
15.	4		528		R201 G37 B81	
16.	8		16,007	8	Black	Default



Production Worksheet

Wilcom EmbroideryStudio - Designing



Design: 6

Title:

Stitches: 37,875
 Height: 6.50 in
 Width: 3.73 in
 Colors: 16
 Colorway: Colorway 1
 Zoom: 1:1

Machine format: Tajima
 Color changes: 15
 Stops: 16
 Trims: 167
 Appliqués: 0
 Left: 58.8 mm
 Right: 36.0 mm
 Up: 88.0 mm
 Down: 77.1 mm
 EndX: 0.00 in
 EndY: 0.00 in
 Area: 24.27 in²
 Max stitch: 7.0 mm
 Min stitch: 0.0 mm
 Max jump: 7.0 mm
 Total thread: 516.83ft
 Total bobbin: 155.89ft

Stop Sequence:

#	N#	Color	St.	Code	Name	Chart
1.	17		3,478		R240 G58 B48	
2.	1		3,018		R1 G99 B14	
3.	6		1,540		R194 G122 B29	
4.	5		1,019		R255 G159 B64	
5.	9		1,593		R255 G246 B210	
6.	3		514		R255 G234 B184	
7.	10		2,603		R19 G56 B51	
8.	13		1,389		R57 G120 B83	
9.	12		1,483		R138 G86 B69	
10.	14		461		R201 G120 B112	
11.	11		892	11	Dark Red	Default
12.	15		764		R255 G237 B215	
13.	7		492		R255 G187 B151	
14.	16		818		R255 G135 B167	
15.	4		593		R201 G37 B81	
16.	8		17,216	8	Black	Default



Production Worksheet

Wilcom EmbroideryStudio - Designing



Design: **7**

Title:

Stitches: 41,090
 Height: 7.00 in
 Width: 4.02 in
 Colors: 16
 Colorway: Colorway 1
 Zoom: 1:1

Machine format: Tajima
 Color changes: 15
 Stops: 16
 Trims: 174
 Appliqués: 0
 Left: 62.5 mm
 Right: 39.7 mm
 Up: 94.4 mm
 Down: 83.4 mm
 EndX: 0.00 in
 EndY: 0.00 in
 Area: 28.15 in²
 Max stitch: 7.3 mm
 Min stitch: 0.0 mm
 Max jump: 7.0 mm
 Total thread: 574.47ft
 Total bobbin: 177.54ft

Stop Sequence:

#	N#	Color	St.	Code	Name	Chart
1.	17		3,858		R240 G58 B48	
2.	1		3,306		R1 G99 B14	
3.	6		1,662		R194 G122 B29	
4.	5		1,133		R255 G159 B64	
5.	9		1,752		R255 G246 B210	
6.	3		545		R255 G234 B184	
7.	10		2,773		R19 G56 B51	
8.	13		1,513		R57 G120 B83	
9.	12		1,649		R138 G86 B69	
10.	14		522		R201 G120 B112	
11.	11		956	11	Dark Red	Default
12.	15		844		R255 G237 B215	
13.	7		549		R255 G187 B151	
14.	16		920		R255 G135 B167	
15.	4		645		R201 G37 B81	
16.	8		18,461	8	Black	Default



Production Worksheet

Wilcom EmbroideryStudio - Designing



Design: 7

Title:

Stitches: 44,400
 Height: 7.50 in
 Width: 4.31 in
 Colors: 16
 Colorway: Colorway 1
 Zoom: 1:1



Machine format: Tajima
 Color changes: 15
 Stops: 16
 Trims: 179
 Appliqués: 0
 Left: 66.1 mm
 Right: 43.3 mm
 Up: 100.7 mm
 Down: 89.8 mm
 EndX: 0.00 in
 EndY: 0.00 in
 Area: 32.31 in²
 Max stitch: 7.8 mm
 Min stitch: 0.0 mm
 Max jump: 6.9 mm
 Total thread: 635.53ft
 Total bobbin: 200.85ft

Stop Sequence:

#	N#	Color	St.	Code	Name	Chart
1.	17		4,338		R240 G58 B48	
2.	1		3,494		R1 G99 B14	
3.	6		1,794		R194 G122 B29	
4.	5		1,227		R255 G159 B64	
5.	9		1,964		R255 G246 B210	
6.	3		604		R255 G234 B184	
7.	10		3,009		R19 G56 B51	
8.	13		1,697		R57 G120 B83	
9.	12		1,758		R138 G86 B69	
10.	14		574		R201 G120 B112	
11.	11		1,052	11	Dark Red	Default
12.	15		923		R255 G237 B215	
13.	7		606		R255 G187 B151	
14.	16		1,005		R255 G135 B167	
15.	4		695		R201 G37 B81	
16.	8		19,658	8	Black	Default