

Production Worksheet

Wilcom EmbroideryStudio - Designing



Design: **3**

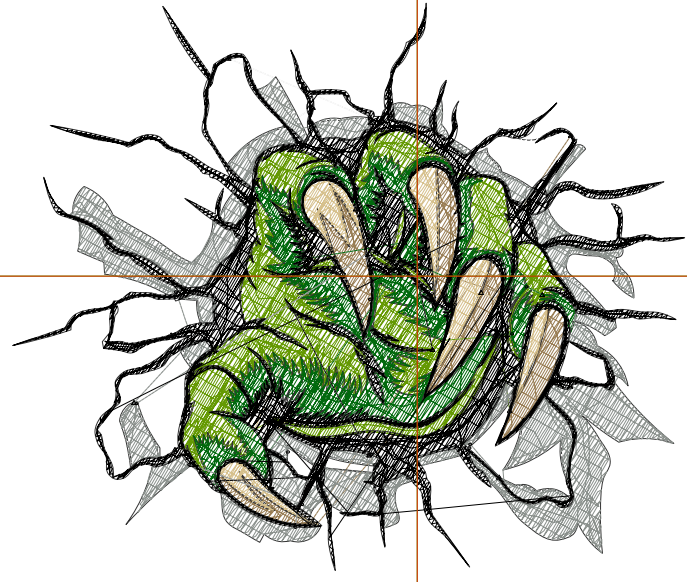
Title:

Stitches: 17,150
Height: 2.92 in
Width: 3.49 in
Colors: 7
Colorway: Colorway 1
Zoom: 1:1

Machine format: Tajima
Color changes: 6
Stops: 7
Trims: 45
Appliqués: 0
Left: 53.4 mm
Right: 35.2 mm
Up: 35.5 mm
Down: 38.7 mm
EndX: 0.00 in
EndY: 0.00 in
Area: 10.19 in²
Max stitch: 9.8 mm
Min stitch: 0.0 mm
Max jump: 6.7 mm
Total thread: 217.21ft
Total bobbin: 60.67ft

Stop Sequence:

#	N#	Color	St.	Code	Name	Chart
1.	9		1,120	9	White	Default
2.	1		634		R153 G126 B85	
3.	2		592		R214 G192 B140	
4.	3		2,639		R100 G153 B2	
5.	4		2,685		R1 G105 B13	
6.	5		2,786		R139 G145 B141	
7.	8		6,692	8	Black	Default



Production Worksheet

Wilcom EmbroideryStudio - Designing



Design: **4**

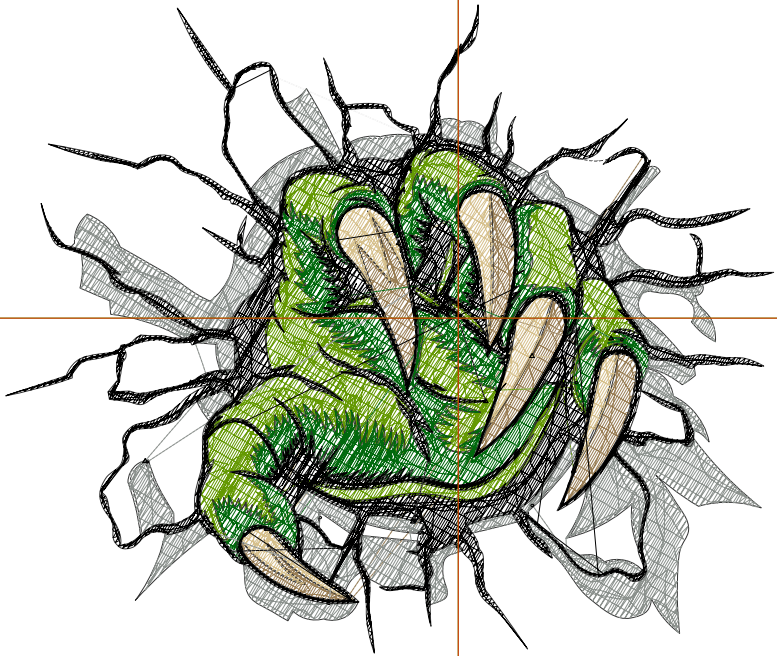
Title:

Stitches: 20,199
 Height: 3.37 in
 Width: 3.98 in
 Colors: 7
 Colorway: Colorway 1
 Zoom: 1:1

Machine format: Tajima
 Color changes: 6
 Stops: 7
 Trims: 48
 Appliqués: 0
 Left: 59.7 mm
 Right: 41.5 mm
 Up: 41.4 mm
 Down: 44.2 mm
 EndX: 0.00 in
 EndY: 0.00 in
 Area: 13.43 in²
 Max stitch: 11.4 mm
 Min stitch: 0.0 mm
 Max jump: 6.7 mm
 Total thread: 262.98ft
 Total bobbin: 75.94ft

Stop Sequence:

#	N#	Color	St.	Code	Name	Chart
1.	9		1,339	9	White	Default
2.	1		769		R153 G126 B85	
3.	2		701		R214 G192 B140	
4.	3		3,102		R100 G153 B2	
5.	4		3,130		R1 G105 B13	
6.	5		3,279		R139 G145 B141	
7.	8		7,877	8	Black	Default



Production Worksheet

Wilcom EmbroideryStudio - Designing



Design: **4**

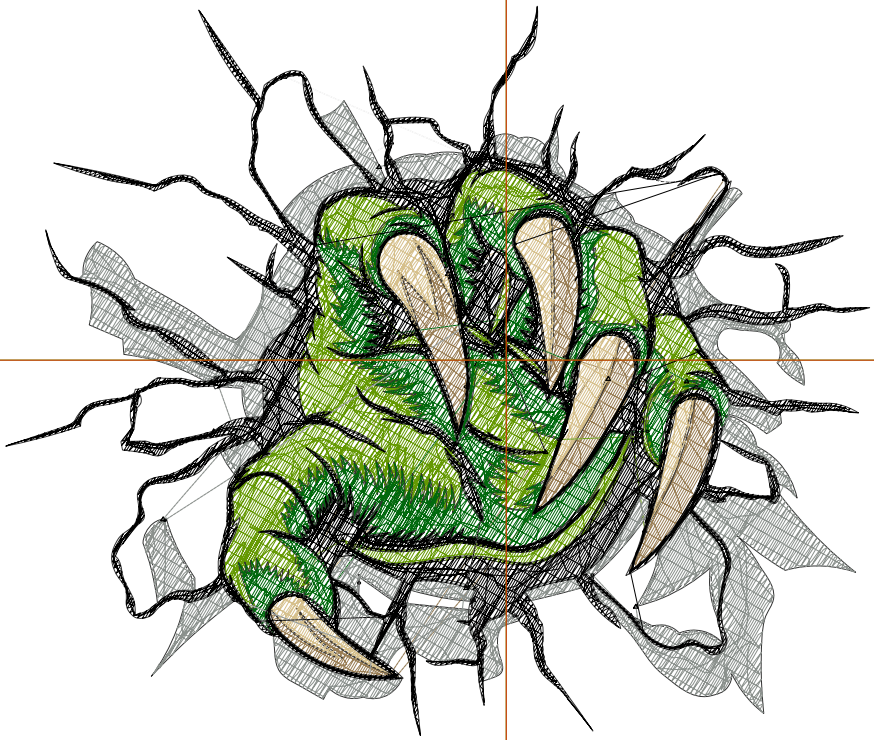
Title:

Stitches: 23,341
 Height: 3.79 in
 Width: 4.49 in
 Colors: 7
 Colorway: Colorway 1
 Zoom: 1:1

Machine format: Tajima
 Color changes: 6
 Stops: 7
 Trims: 49
 Appliqués: 0
 Left: 66.1 mm
 Right: 48.0 mm
 Up: 46.7 mm
 Down: 49.7 mm
 EndX: 0.00 in
 EndY: 0.00 in
 Area: 17.05 in²
 Max stitch: 11.7 mm
 Min stitch: 0.0 mm
 Max jump: 6.9 mm
 Total thread: 312.99ft
 Total bobbin: 93.36ft

Stop Sequence:

#	N#	Color	St.	Code	Name	Chart
1.	9		1,598	9	White	Default
2.	1		887		R153 G126 B85	
3.	2		815		R214 G192 B140	
4.	3		3,560		R100 G153 B2	
5.	4		3,591		R1 G105 B13	
6.	5		3,760		R139 G145 B141	
7.	8		9,128	8	Black	Default



Production Worksheet

Wilcom EmbroideryStudio - Designing



Design: **5**

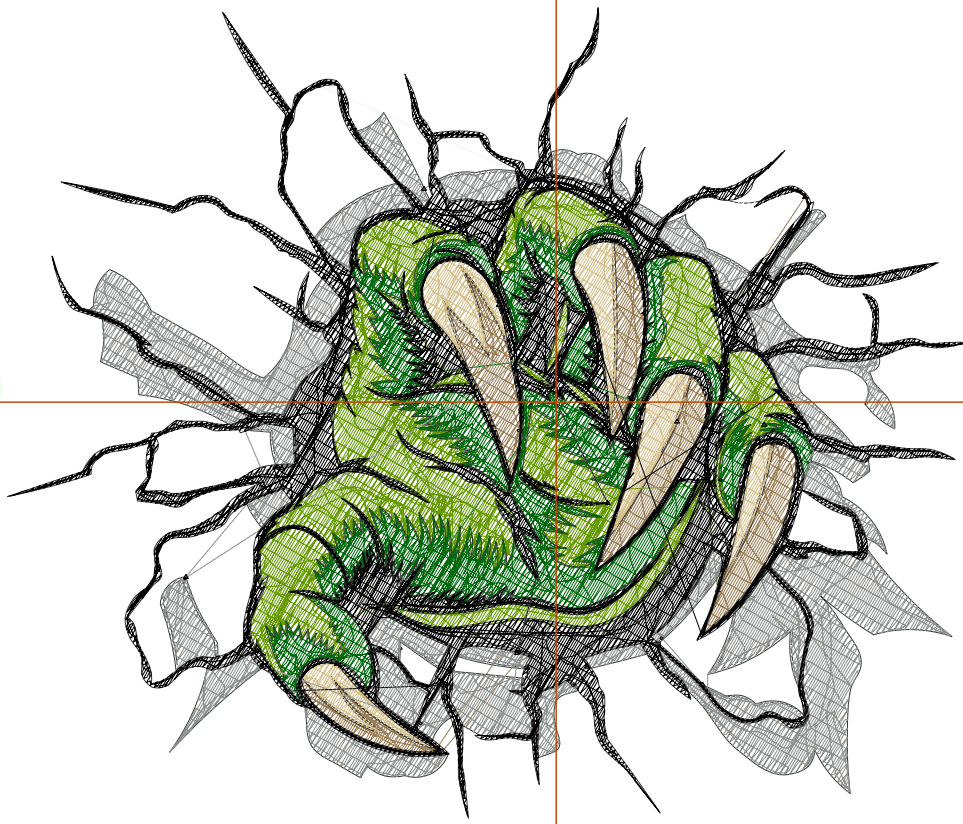
Title:

Stitches: 26,730
Height: 4.20 in
Width: 4.98 in
Colors: 7
Colorway: Colorway 1
Zoom: 1:1

Machine format: Tajima
Color changes: 6
Stops: 7
Trims: 49
Appliqués: 0
Left: 72.2 mm
Right: 54.2 mm
Up: 52.0 mm
Down: 54.7 mm
EndX: 0.00 in
EndY: 0.00 in
Area: 20.90 in²
Max stitch: 8.9 mm
Min stitch: 0.0 mm
Max jump: 7.0 mm
Total thread: 365.55ft
Total bobbin: 111.33ft

Stop Sequence:

#	N#	Color	St.	Code	Name	Chart
1.	9		1,825	9	White	Default
2.	1		1,052		R153 G126 B85	
3.	2		942		R214 G192 B140	
4.	3		4,126		R100 G153 B2	
5.	4		4,165		R1 G105 B13	
6.	5		4,309		R139 G145 B141	
7.	8		10,309	8	Black	Default



Production Worksheet

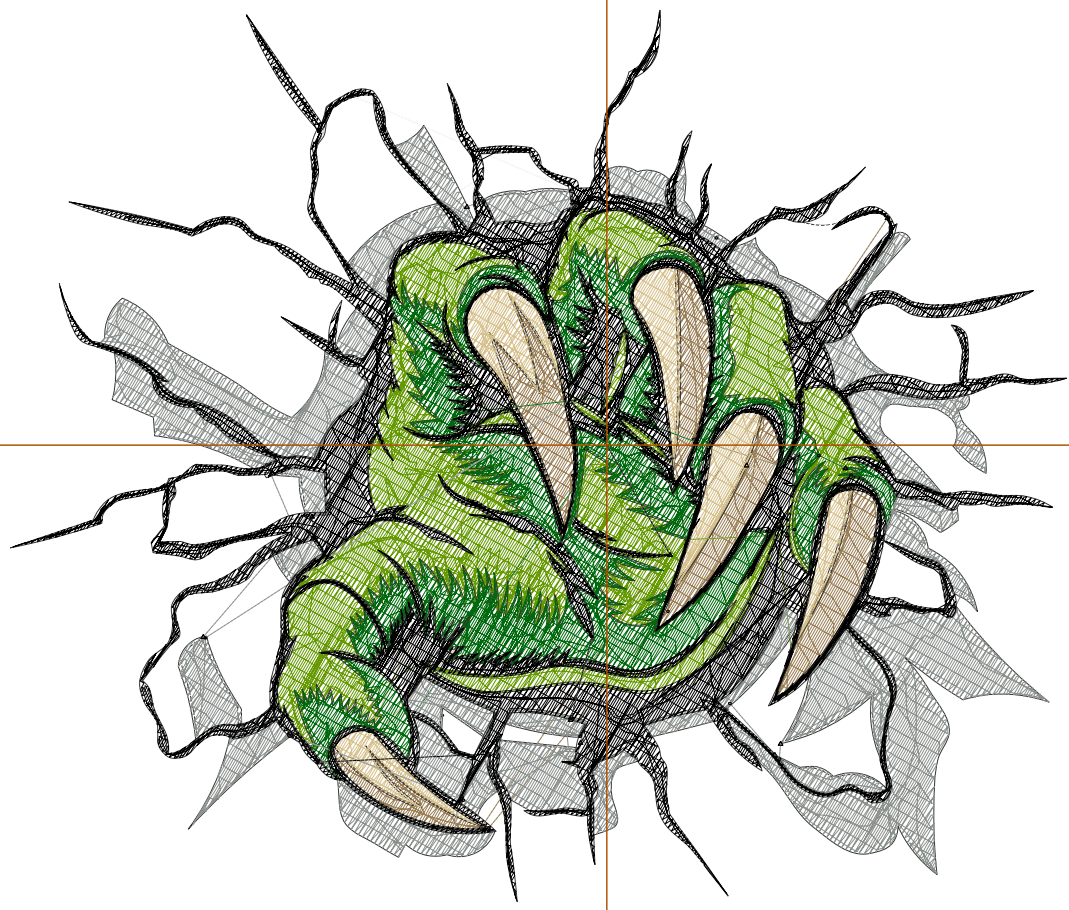
Wilcom EmbroideryStudio - Designing



Design: **5**

Title:

Stitches: 29,860
Height: 4.62 in
Width: 5.49 in
Colors: 7
Colorway: Colorway 1
Zoom: 1:1



Production Worksheet

Wilcom EmbroideryStudio - Designing



Design: **5**

Title:

Stitches: 29,860
 Height: 4.62 in
 Width: 5.49 in
 Colors: 7
 Colorway: Colorway 1
 Zoom: 1:1

Machine format: Tajima
 Color changes: 6
 Stops: 7
 Trims: 53
 Appliqués: 0
 Left: 78.5 mm
 Right: 60.8 mm
 Up: 57.2 mm
 Down: 60.1 mm
 EndX: 0.00 in
 EndY: 0.00 in
 Area 25.34 in²
 Max stitch: 9.8 mm
 Min stitch: 0.0 mm
 Max jump: 7.0 mm
 Total thread: 416.67ft
 Total bobbin: 129.45ft

Stop Sequence:

#	N#	Color	St.	Code	Name	Chart
1.	9		2,073	9	White	Default
2.	1		1,170		R153 G126 B85	
3.	2		1,058		R214 G192 B140	
4.	3		4,605		R100 G153 B2	
5.	4		4,633		R1 G105 B13	
6.	5		4,876		R139 G145 B141	
7.	8		11,443	8	Black	Default

Production Worksheet

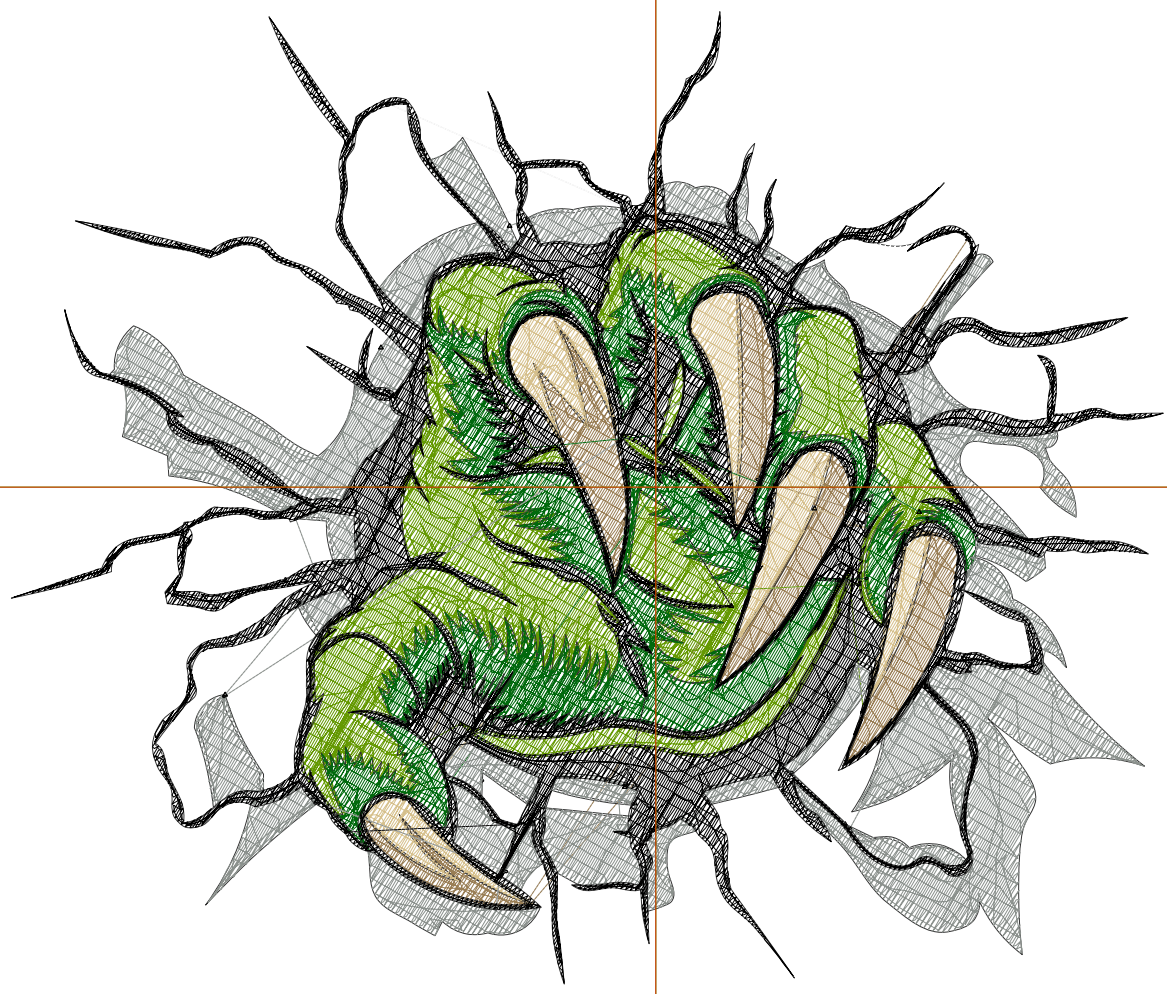
Wilcom EmbroideryStudio - Designing



Design: **6**

Title:

Stitches: 33,079
Height: 5.04 in
Width: 5.98 in
Colors: 7
Colorway: Colorway 1
Zoom: 1:1



Production Worksheet

Wilcom EmbroideryStudio - Designing



Design: **6**

Title:

Stitches: 33,079
 Height: 5.04 in
 Width: 5.98 in
 Colors: 7
 Colorway: Colorway 1
 Zoom: 1:1

Machine format: Tajima
 Color changes: 6
 Stops: 7
 Trims: 53
 Appliqués: 0
 Left: 84.9 mm
 Right: 67.0 mm
 Up: 62.5 mm
 Down: 65.5 mm
 EndX: 0.00 in
 EndY: 0.00 in
 Area 30.15 in²
 Max stitch: 8.3 mm
 Min stitch: 0.0 mm
 Max jump: 6.8 mm
 Total thread: 471.37ft
 Total bobbin: 149.34ft

Stop Sequence:

#	N#	Color	St.	Code	Name	Chart
1.	9		2,351	9	White	Default
2.	1		1,300		R153 G126 B85	
3.	2		1,180		R214 G192 B140	
4.	3		5,205		R100 G153 B2	
5.	4		5,168		R1 G105 B13	
6.	5		5,507		R139 G145 B141	
7.	8		12,366	8	Black	Default

Production Worksheet

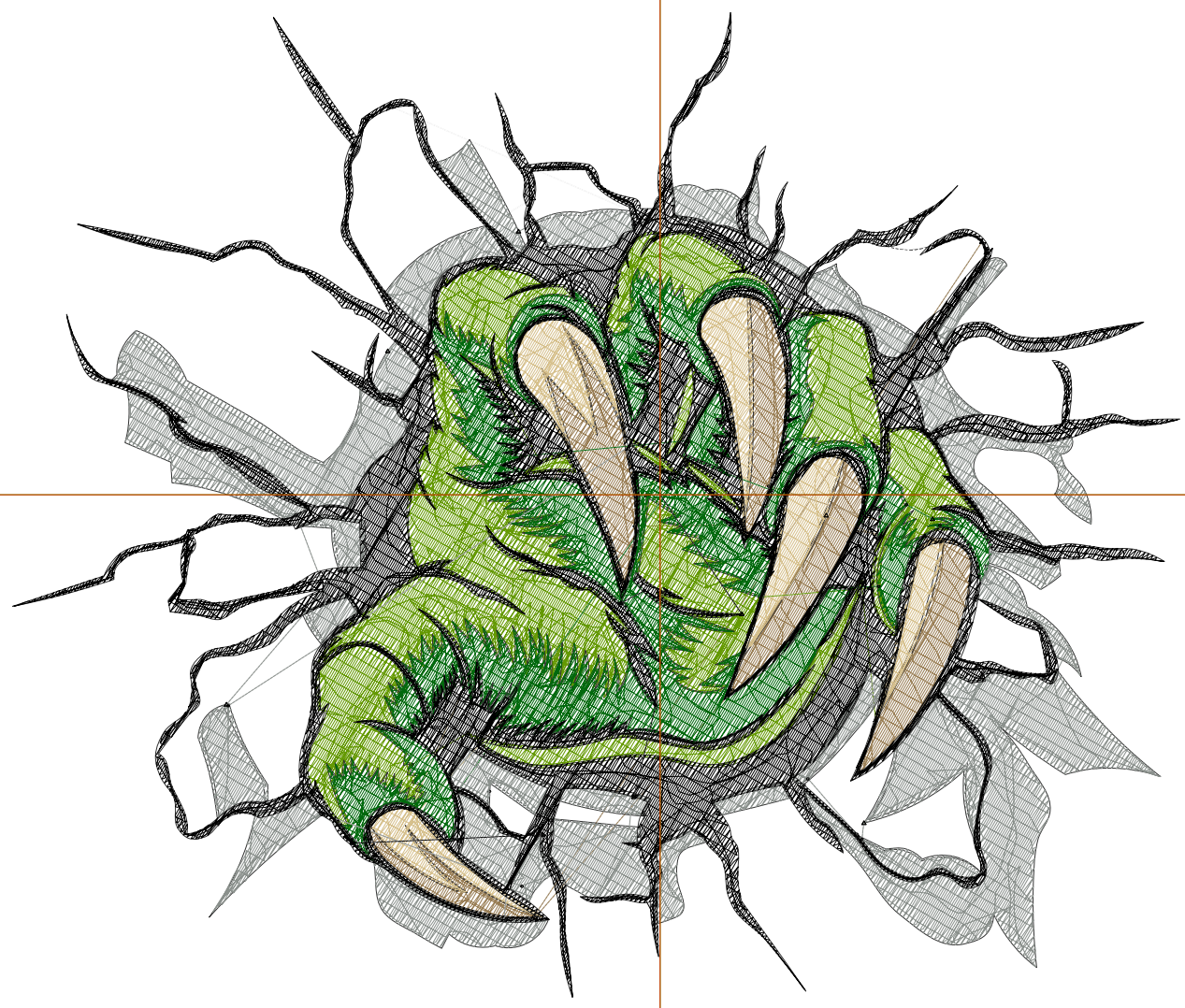
Wilcom EmbroideryStudio - Designing



Design: **6**

Title:

Stitches: 36,631
Height: 5.47 in
Width: 6.48 in
Colors: 7
Colorway: Colorway 1
Zoom: 1:1



Production Worksheet

Wilcom EmbroideryStudio - Designing



Design: **6**

Title:

Stitches: 36,631
 Height: 5.47 in
 Width: 6.48 in
 Colors: 7
 Colorway: Colorway 1
 Zoom: 1:1

Machine format: Tajima
 Color changes: 6
 Stops: 7
 Trims: 53
 Appliqués: 0
 Left: 91.3 mm
 Right: 73.2 mm
 Up: 67.9 mm
 Down: 71.0 mm
 EndX: 0.00 in
 EndY: 0.00 in
 Area 35.43 in²
 Max stitch: 9.0 mm
 Min stitch: 0.0 mm
 Max jump: 6.9 mm
 Total thread: 532.41ft
 Total bobbin: 171.70ft

Stop Sequence:

#	N#	Color	St.	Code	Name	Chart
1.	9		2,655	9	White	Default
2.	1		1,459		R153 G126 B85	
3.	2		1,309		R214 G192 B140	
4.	3		5,747		R100 G153 B2	
5.	4		5,773		R1 G105 B13	
6.	5		6,068		R139 G145 B141	
7.	8		13,618	8	Black	Default

Production Worksheet

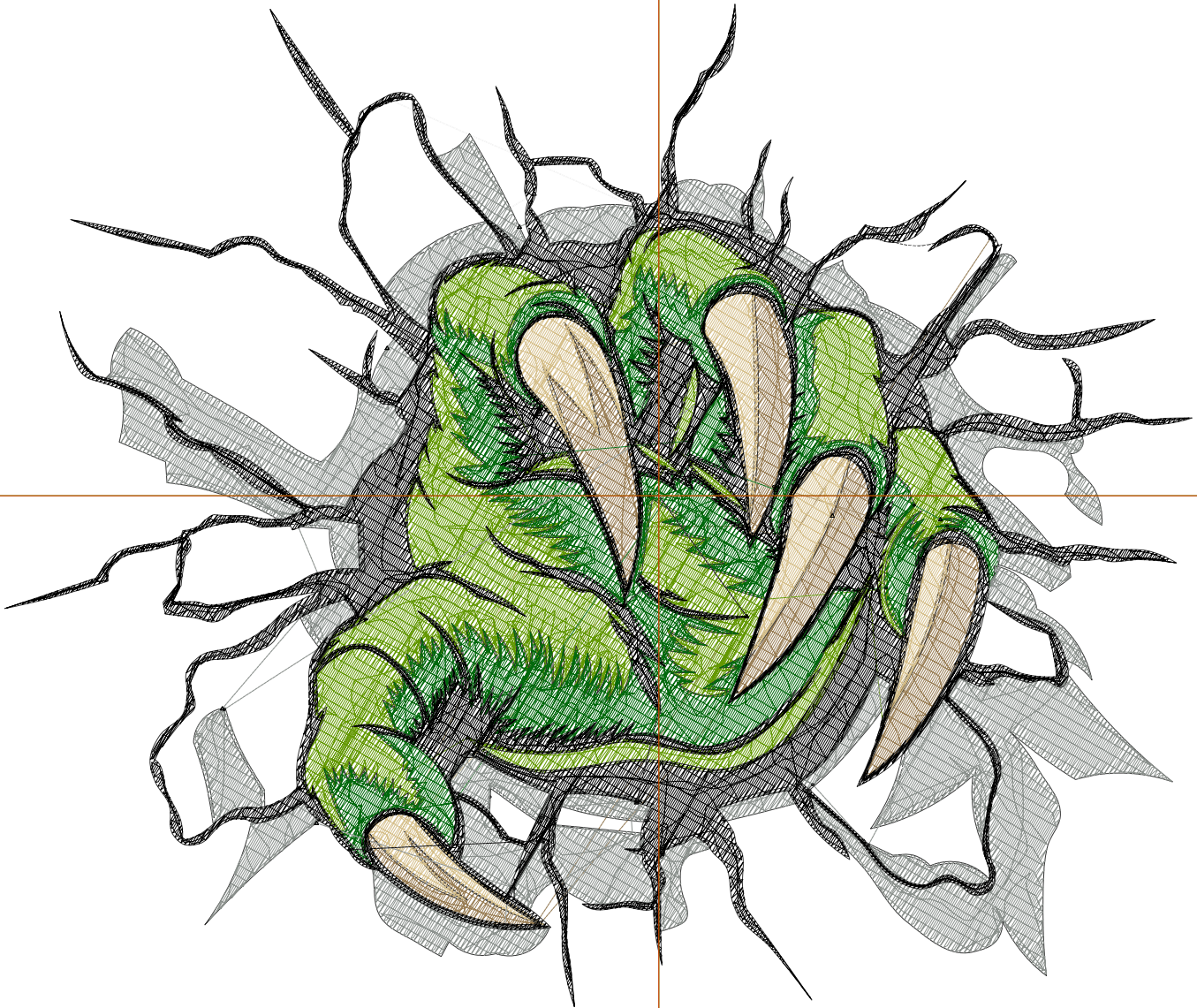
Wilcom EmbroideryStudio - Designing



Design: **7**

Title:

Stitches: 40,231
Height: 5.88 in
Width: 6.99 in
Colors: 7
Colorway: Colorway 1
Zoom: 1:1



Production Worksheet

Wilcom EmbroideryStudio - Designing



Design: **7**

Title:

Stitches: 40,231
 Height: 5.88 in
 Width: 6.99 in
 Colors: 7
 Colorway: Colorway 1
 Zoom: 1:1

Machine format: Tajima
 Color changes: 6
 Stops: 7
 Trims: 54
 Appliqués: 0
 Left: 97.7 mm
 Right: 79.8 mm
 Up: 73.0 mm
 Down: 76.5 mm
 EndX: 0.00 in
 EndY: 0.00 in
 Area 41.13 in²
 Max stitch: 9.7 mm
 Min stitch: 0.0 mm
 Max jump: 7.0 mm
 Total thread: 595.64ft
 Total bobbin: 195.18ft

Stop Sequence:

#	N#	Color	St.	Code	Name	Chart
1.	9		2,985	9	White	Default
2.	1		1,627		R153 G126 B85	
3.	2		1,440		R214 G192 B140	
4.	3		6,388		R100 G153 B2	
5.	4		6,301		R1 G105 B13	
6.	5		6,727		R139 G145 B141	
7.	8		14,761	8	Black	Default

Production Worksheet

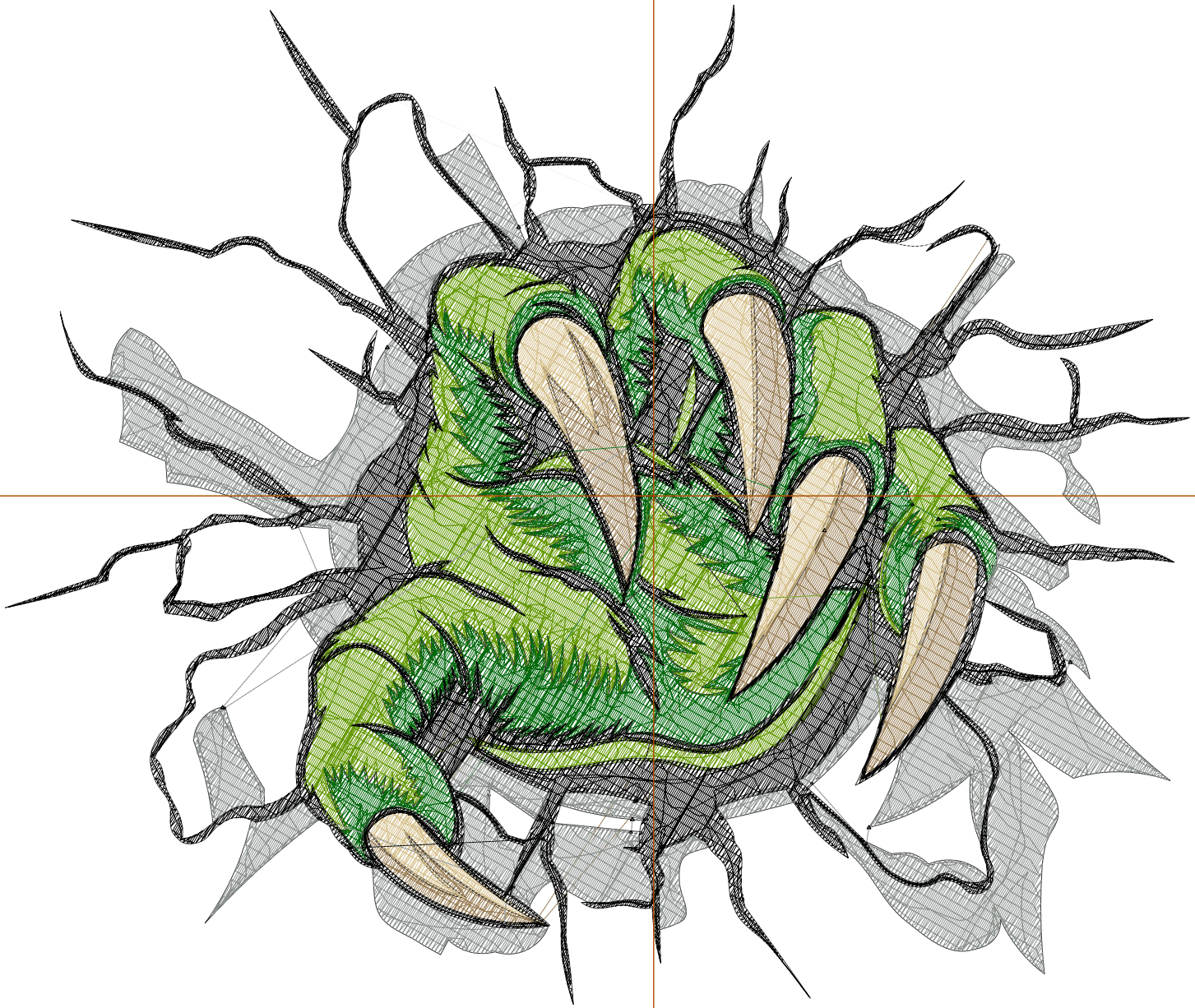
Wilcom EmbroideryStudio - Designing



Design: **7**

Title:

Stitches: 43,758
Height: 6.30 in
Width: 7.49 in
Colors: 7
Colorway: Colorway 1
Zoom: 1:1



Production Worksheet

Wilcom EmbroideryStudio - Designing



Design: **7**

Title:

Stitches: 43,758
 Height: 6.30 in
 Width: 7.49 in
 Colors: 7
 Colorway: Colorway 1
 Zoom: 1:1

Machine format: Tajima
 Color changes: 6
 Stops: 7
 Trims: 57
 Appliqués: 0
 Left: 104.1 mm
 Right: 86.0 mm
 Up: 78.5 mm
 Down: 81.5 mm
 EndX: 0.00 in
 EndY: 0.00 in
 Area 47.16 in²
 Max stitch: 10.4 mm
 Min stitch: 0.0 mm
 Max jump: 7.0 mm
 Total thread: 661.29ft
 Total bobbin: 220.37ft

Stop Sequence:

#	N#	Color	St.	Code	Name	Chart
1.	9		3,284	9	White	Default
2.	1		1,790		R153 G126 B85	
3.	2		1,582		R214 G192 B140	
4.	3		6,901		R100 G153 B2	
5.	4		6,839		R1 G105 B13	
6.	5		7,437		R139 G145 B141	
7.	8		15,923	8	Black	Default