

Production Worksheet

Wilcom EmbroideryStudio - Designing



Design: **3**

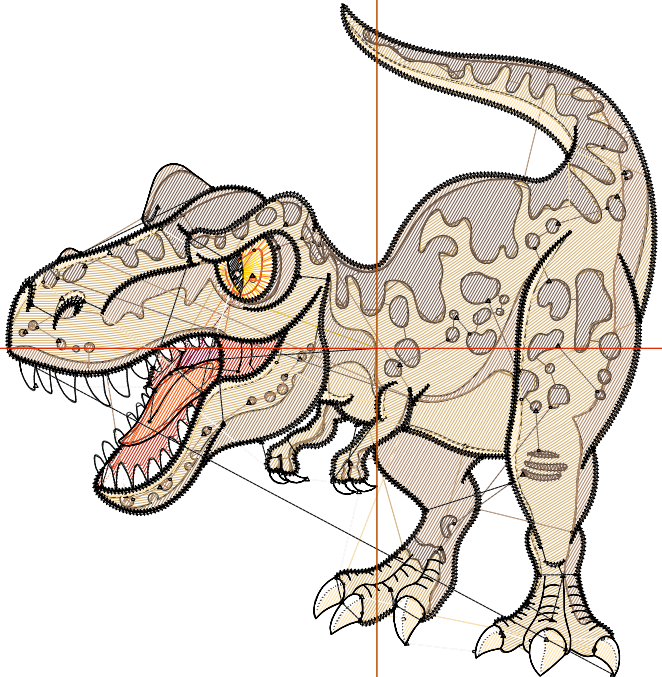
Title:

Stitches: 16,464
 Height: 3.50 in
 Width: 3.39 in
 Colors: 12
 Colorway: Colorway 1
 Zoom: 1:1

Machine format: Tajima
 Color changes: 11
 Stops: 12
 Trims: 104
 Appliqués: 0
 Left: 49.1 mm
 Right: 37.1 mm
 Up: 45.6 mm
 Down: 43.4 mm
 EndX: 0.00 in
 EndY: 0.00 in
 Area 11.89 in²
 Max stitch: 9.6 mm
 Min stitch: 0.0 mm
 Max jump: 6.9 mm
 Total thread: 197.36ft
 Total bobbin: 50.60ft

Stop Sequence:

#	N#	Color	St.	Code	Name	Chart
1.	4		110	1068	Canary	Madeira Classic 40
2.	3		115	3	Red	Default
3.	11		334	1146	Tomato Red	Madeira Classic 40
4.	12		95	1178	Carrot	Madeira Classic 40
5.	13		69	13	Purple	Default
6.	5		4,157	5	Aqua	Default
7.	2		428		R166 G132 B94	
8.	6		2,052	6	Dark Magenta	Default
9.	14		2,217	1329	Toasted Marshmallow	Madeira Classic 40
10.	10		1,049	10	Dark Blue	Default
11.	9		872	9	White	Default
12.	8		4,964	8	Black	Default



Production Worksheet

Wilcom EmbroideryStudio - Designing



Design: **4**

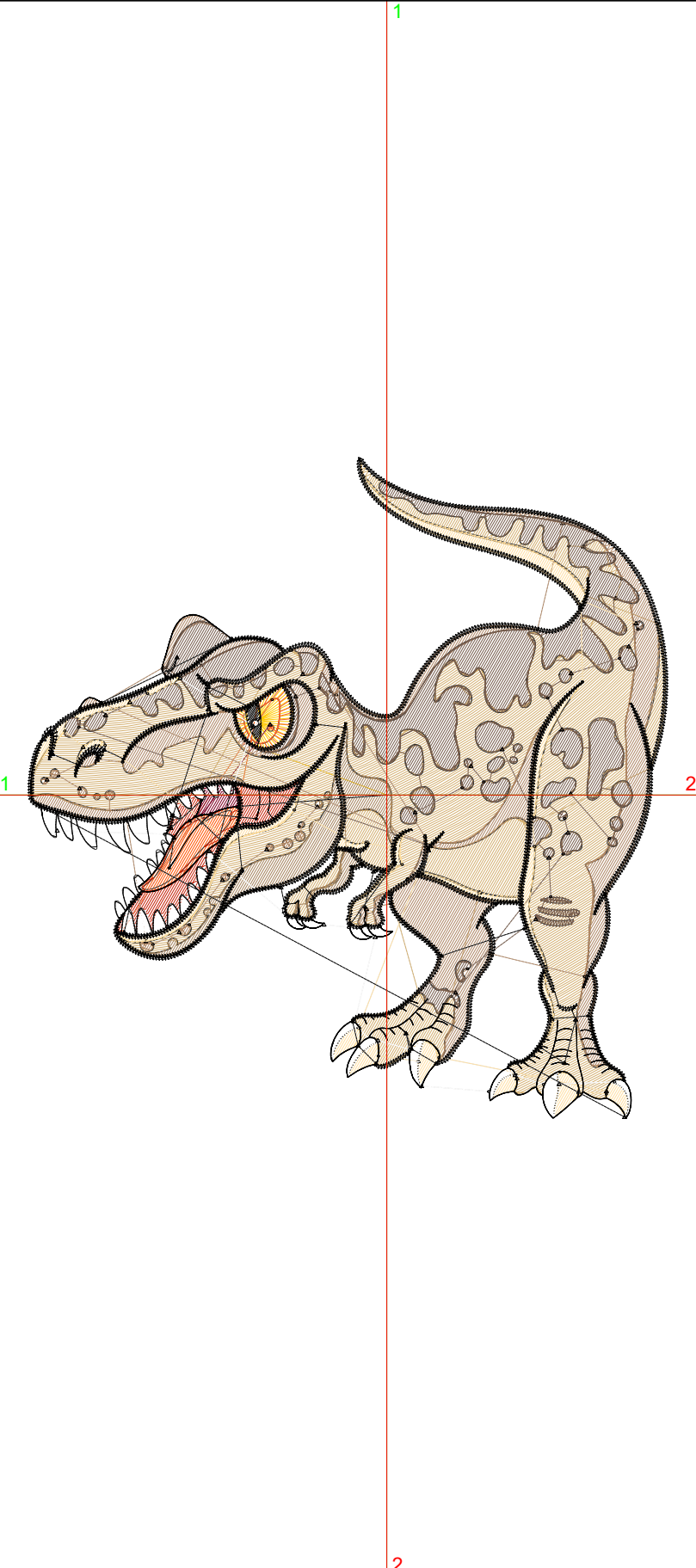
Title:

Stitches: 19,307
 Height: 4.00 in
 Width: 3.88 in
 Colors: 12
 Colorway: Colorway 1
 Zoom: 1:1

Machine format: Tajima
 Color changes: 11
 Stops: 12
 Trims: 107
 Appliqués: 0
 Left: 55.2 mm
 Right: 43.3 mm
 Up: 51.9 mm
 Down: 49.7 mm
 EndX: 0.00 in
 EndY: 0.00 in
 Area 15.52 in²
 Max stitch: 11.0 mm
 Min stitch: 0.0 mm
 Max jump: 7.0 mm
 Total thread: 238.10ft
 Total bobbin: 63.69ft

Stop Sequence:

#	N#	Color	St.	Code	Name	Chart
1.	4		128	1068	Canary	Madeira Classic 40
2.	3		139	3	Red	Default
3.	11		397	1146	Tomato Red	Madeira Classic 40
4.	12		100	1178	Carrot	Madeira Classic 40
5.	13		79	13	Purple	Default
6.	5		5,066	5	Aqua	Default
7.	2		503		R166 G132 B94	
8.	6		2,418	6	Dark Magenta	Default
9.	14		2,702	1329	Toasted Marshmallow	Madeira Classic 40
10.	10		1,240	10	Dark Blue	Default
11.	9		960	9	White	Default
12.	8		5,573	8	Black	Default



Production Worksheet

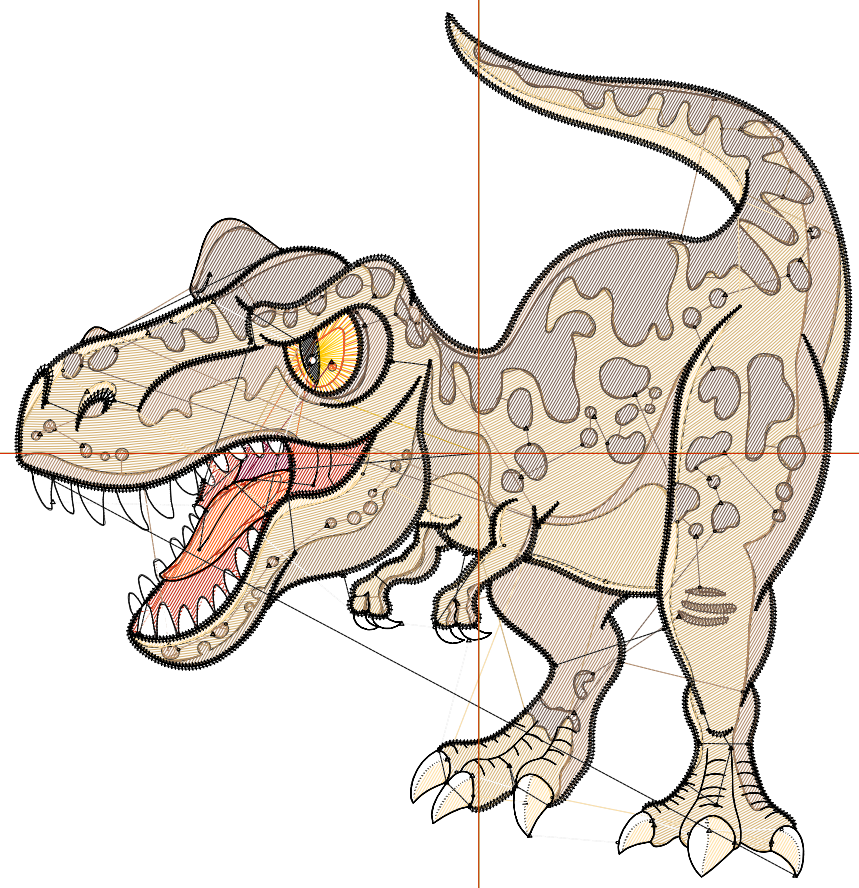
Wilcom EmbroideryStudio - Designing



Design: **4**

Title:

Stitches: 22,143
Height: 4.50 in
Width: 4.36 in
Colors: 12
Colorway: Colorway 1
Zoom: 1:1



Production Worksheet

Wilcom EmbroideryStudio - Designing



Design: **4**

Title:

Stitches: 22,143
 Height: 4.50 in
 Width: 4.36 in
 Colors: 12
 Colorway: Colorway 1
 Zoom: 1:1

Machine format: Tajima
 Color changes: 11
 Stops: 12
 Trims: 111
 Appliqués: 0
 Left: 61.4 mm
 Right: 49.4 mm
 Up: 58.3 mm
 Down: 56.1 mm
 EndX: 0.00 in
 EndY: 0.00 in
 Area 19.63 in²
 Max stitch: 9.0 mm
 Min stitch: 0.0 mm
 Max jump: 6.8 mm
 Total thread: 279.66ft
 Total bobbin: 77.29ft

Stop Sequence:

#	N#	Color	St.	Code	Name	Chart
1.	4		144	1068	Canary	Madeira Classic 40
2.	3		159	3	Red	Default
3.	11		474	1146	Tomato Red	Madeira Classic 40
4.	12		120	1178	Carrot	Madeira Classic 40
5.	13		95	13	Purple	Default
6.	5		5,986	5	Aqua	Default
7.	2		606		R166 G132 B94	
8.	6		2,793	6	Dark Magenta	Default
9.	14		3,073	1329	Toasted Marshmallow	Madeira Classic 40
10.	10		1,425	10	Dark Blue	Default
11.	9		1,086	9	White	Default
12.	8		6,180	8	Black	Default

Production Worksheet

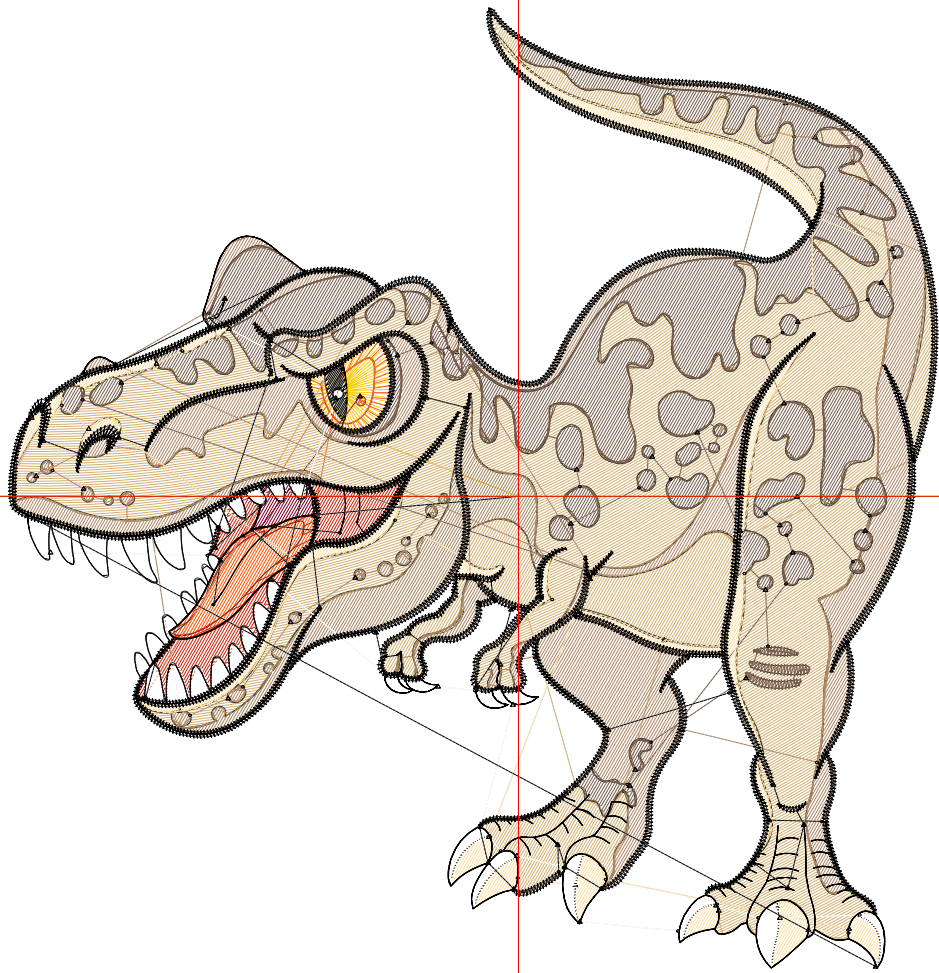
Wilcom EmbroideryStudio - Designing



Design: **5**

Title:

Stitches: 25,051
Height: 5.00 in
Width: 4.84 in
Colors: 12
Colorway: Colorway 1
Zoom: 1:1



Production Worksheet

Wilcom EmbroideryStudio - Designing



Design: **5**

Title:

Stitches: 25,051
 Height: 5.00 in
 Width: 4.84 in
 Colors: 12
 Colorway: Colorway 1
 Zoom: 1:1

Machine format: Tajima
 Color changes: 11
 Stops: 12
 Trims: 116
 Appliqués: 0
 Left: 67.5 mm
 Right: 55.5 mm
 Up: 64.6 mm
 Down: 62.4 mm
 EndX: 0.00 in
 EndY: 0.00 in
 Area 24.23 in²
 Max stitch: 10.1 mm
 Min stitch: 0.0 mm
 Max jump: 6.8 mm
 Total thread: 323.33ft
 Total bobbin: 91.86ft

Stop Sequence:

#	N#	Color	St.	Code	Name	Chart
1.	4		166	1068	Canary	Madeira Classic 40
2.	3		184	3	Red	Default
3.	11		542	1146	Tomato Red	Madeira Classic 40
4.	12		125	1178	Carrot	Madeira Classic 40
5.	13		100	13	Purple	Default
6.	5		6,937	5	Aqua	Default
7.	2		693		R166 G132 B94	
8.	6		3,117	6	Dark Magenta	Default
9.	14		3,584	1329	Toasted Marshmallow	Madeira Classic 40
10.	10		1,614	10	Dark Blue	Default
11.	9		1,189	9	White	Default
12.	8		6,798	8	Black	Default

Production Worksheet

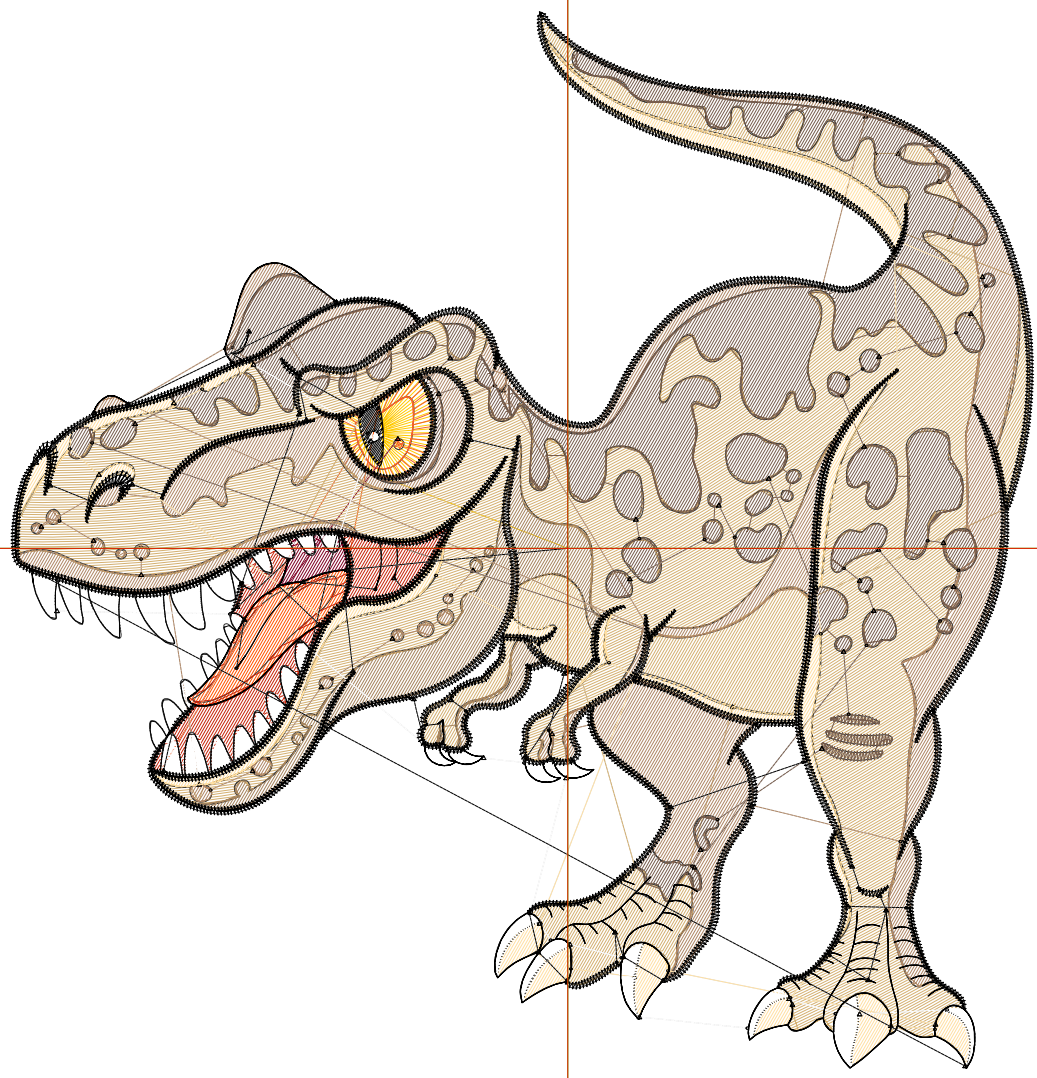
Wilcom EmbroideryStudio - Designing



Design: **5**

Title:

Stitches: 28,069
Height: 5.50 in
Width: 5.33 in
Colors: 12
Colorway: Colorway 1
Zoom: 1:1



Production Worksheet

Wilcom EmbroideryStudio - Designing



Design: **5**

Title:

Stitches: 28,069
 Height: 5.50 in
 Width: 5.33 in
 Colors: 12
 Colorway: Colorway 1
 Zoom: 1:1

Machine format: Tajima
 Color changes: 11
 Stops: 12
 Trims: 121
 Appliqués: 0
 Left: 73.6 mm
 Right: 61.6 mm
 Up: 71.0 mm
 Down: 68.8 mm
 EndX: 0.00 in
 EndY: 0.00 in
 Area 29.30 in²
 Max stitch: 11.1 mm
 Min stitch: 0.0 mm
 Max jump: 7.0 mm
 Total thread: 370.39ft
 Total bobbin: 108.02ft

Stop Sequence:

#	N#	Color	St.	Code	Name	Chart
1.	4		188	1068	Canary	Madeira Classic 40
2.	3		211	3	Red	Default
3.	11		605	1146	Tomato Red	Madeira Classic 40
4.	12		133	1178	Carrot	Madeira Classic 40
5.	13		118	13	Purple	Default
6.	5		8,049	5	Aqua	Default
7.	2		779		R166 G132 B94	
8.	6		3,524	6	Dark Magenta	Default
9.	14		3,962	1329	Toasted Marshmallow	Madeira Classic 40
10.	10		1,780	10	Dark Blue	Default
11.	9		1,299	9	White	Default
12.	8		7,419	8	Black	Default

Production Worksheet

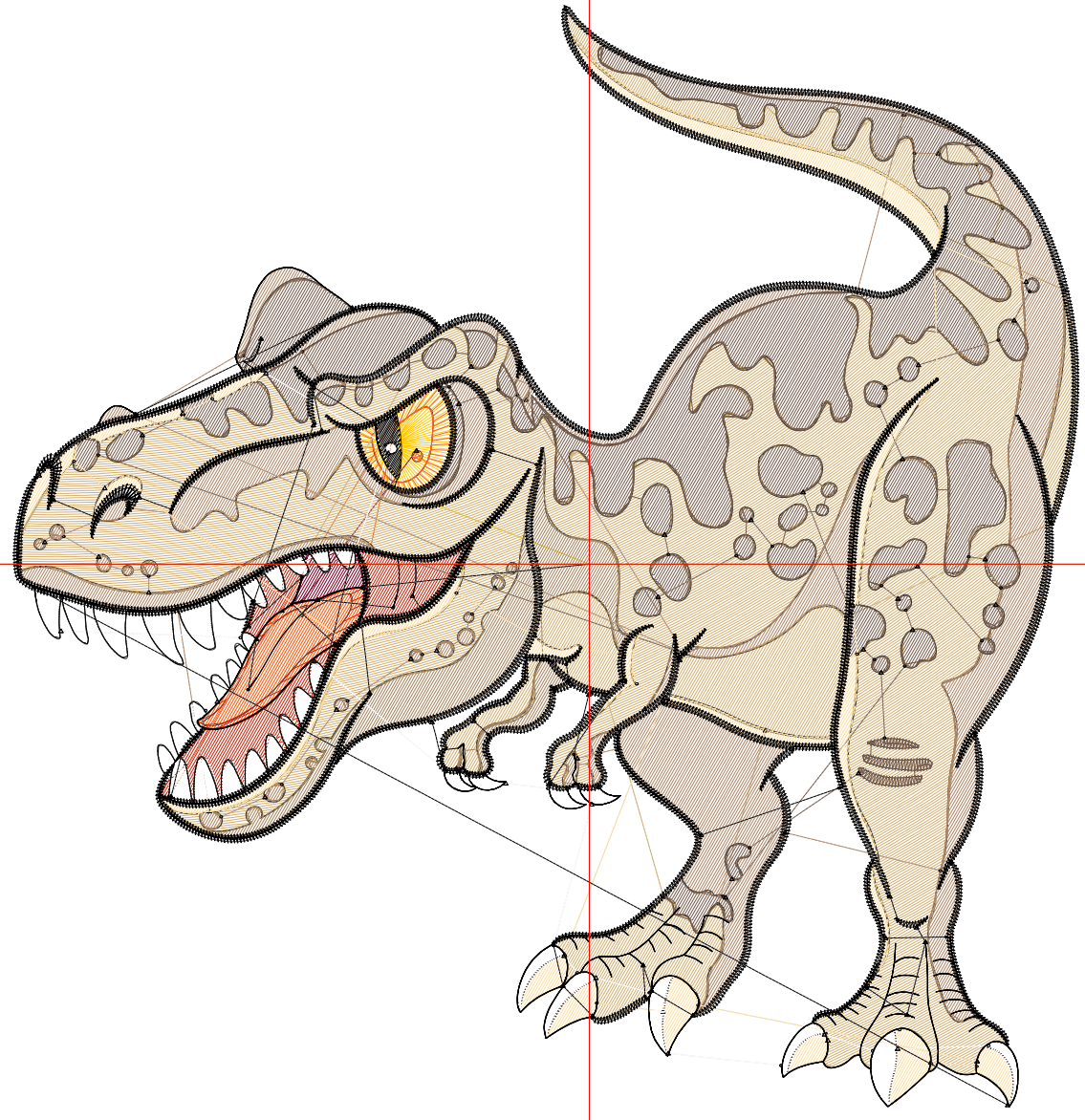
Wilcom EmbroideryStudio - Designing



Design: **6**

Title:

Stitches: 31,366
Height: 6.00 in
Width: 5.81 in
Colors: 12
Colorway: Colorway 1
Zoom: 1:1



Production Worksheet

Wilcom EmbroideryStudio - Designing



Design: **6**

Title:

Stitches: 31,366
 Height: 6.00 in
 Width: 5.81 in
 Colors: 12
 Colorway: Colorway 1
 Zoom: 1:1

Machine format: Tajima
 Color changes: 11
 Stops: 12
 Trims: 125
 Appliqués: 0
 Left: 79.7 mm
 Right: 67.8 mm
 Up: 77.3 mm
 Down: 75.1 mm
 EndX: 0.00 in
 EndY: 0.00 in
 Area 34.87 in²
 Max stitch: 12.1 mm
 Min stitch: 0.0 mm
 Max jump: 7.0 mm
 Total thread: 422.94ft
 Total bobbin: 126.33ft

Stop Sequence:

#	N#	Color	St.	Code	Name	Chart
1.	4		228	1068	Canary	Madeira Classic 40
2.	3		237	3	Red	Default
3.	11		676	1146	Tomato Red	Madeira Classic 40
4.	12		151	1178	Carrot	Madeira Classic 40
5.	13		125	13	Purple	Default
6.	5		9,130	5	Aqua	Default
7.	2		884		R166 G132 B94	
8.	6		3,987	6	Dark Magenta	Default
9.	14		4,519	1329	Toasted Marshmallow	Madeira Classic 40
10.	10		1,996	10	Dark Blue	Default
11.	9		1,400	9	White	Default
12.	8		8,031	8	Black	Default

Production Worksheet

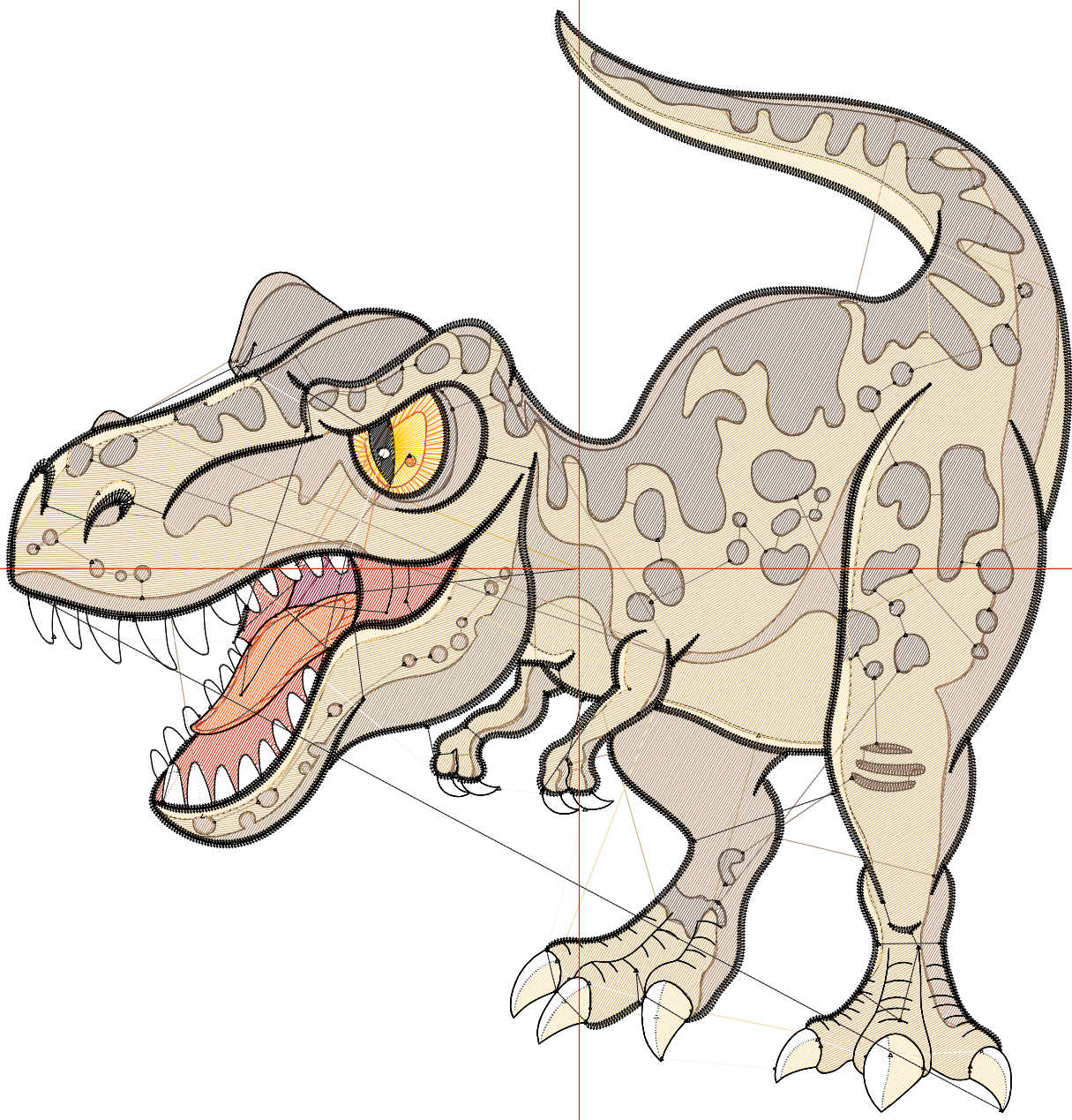
Wilcom EmbroideryStudio - Designing



Design: **6**

Title:

Stitches: 34,655
Height: 6.50 in
Width: 6.29 in
Colors: 12
Colorway: Colorway 1
Zoom: 1:1



Production Worksheet

Wilcom EmbroideryStudio - Designing



Design: **6**

Title:

Stitches: 34,655
 Height: 6.50 in
 Width: 6.29 in
 Colors: 12
 Colorway: Colorway 1
 Zoom: 1:1

Machine format: Tajima
 Color changes: 11
 Stops: 12
 Trims: 130
 Appliqués: 0
 Left: 85.9 mm
 Right: 73.9 mm
 Up: 83.7 mm
 Down: 81.5 mm
 EndX: 0.00 in
 EndY: 0.00 in
 Area 40.91 in²
 Max stitch: 7.0 mm
 Min stitch: 0.0 mm
 Max jump: 7.0 mm
 Total thread: 476.26ft
 Total bobbin: 145.14ft

Stop Sequence:

#	N#	Color	St.	Code	Name	Chart
1.	4		251	1068	Canary	Madeira Classic 40
2.	3		273	3	Red	Default
3.	11		741	1146	Tomato Red	Madeira Classic 40
4.	12		171	1178	Carrot	Madeira Classic 40
5.	13		140	13	Purple	Default
6.	5		10,314	5	Aqua	Default
7.	2		968		R166 G132 B94	
8.	6		4,450	6	Dark Magenta	Default
9.	14		4,966	1329	Toasted Marshmallow	Madeira Classic 40
10.	10		2,234	10	Dark Blue	Default
11.	9		1,522	9	White	Default
12.	8		8,623	8	Black	Default

Production Worksheet

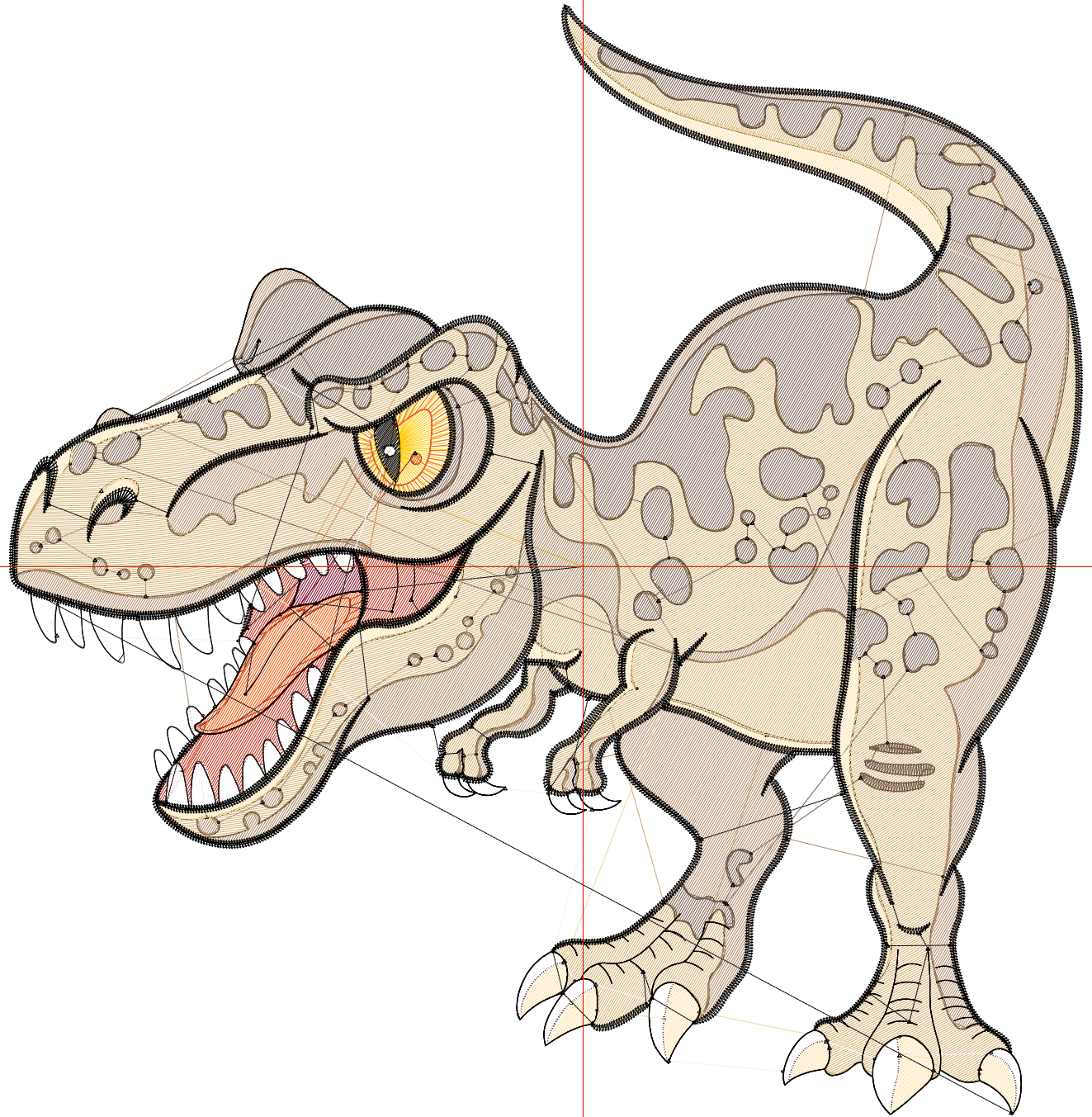
Wilcom EmbroideryStudio - Designing



Design: **7**

Title:

Stitches: 38,117
Height: 7.00 in
Width: 6.77 in
Colors: 12
Colorway: Colorway 1
Zoom: 1:1



Production Worksheet

Wilcom EmbroideryStudio - Designing



Design: **7**

Title:

Stitches: 38,117
 Height: 7.00 in
 Width: 6.77 in
 Colors: 12
 Colorway: Colorway 1
 Zoom: 1:1

Machine format: Tajima
 Color changes: 11
 Stops: 12
 Trims: 137
 Appliqués: 0
 Left: 92.0 mm
 Right: 80.1 mm
 Up: 90.0 mm
 Down: 87.8 mm
 EndX: 0.00 in
 EndY: 0.00 in
 Area 47.44 in²
 Max stitch: 6.9 mm
 Min stitch: 0.0 mm
 Max jump: 6.9 mm
 Total thread: 532.78ft
 Total bobbin: 165.18ft

Stop Sequence:

#	N#	Color	St.	Code	Name	Chart
1.	4		278	1068	Canary	Madeira Classic 40
2.	3		311	3	Red	Default
3.	11		807	1146	Tomato Red	Madeira Classic 40
4.	12		183	1178	Carrot	Madeira Classic 40
5.	13		149	13	Purple	Default
6.	5		11,594	5	Aqua	Default
7.	2		1,089		R166 G132 B94	
8.	6		4,971	6	Dark Magenta	Default
9.	14		5,453	1329	Toasted Marshmallow	Madeira Classic 40
10.	10		2,404	10	Dark Blue	Default
11.	9		1,628	9	White	Default
12.	8		9,248	8	Black	Default

Production Worksheet

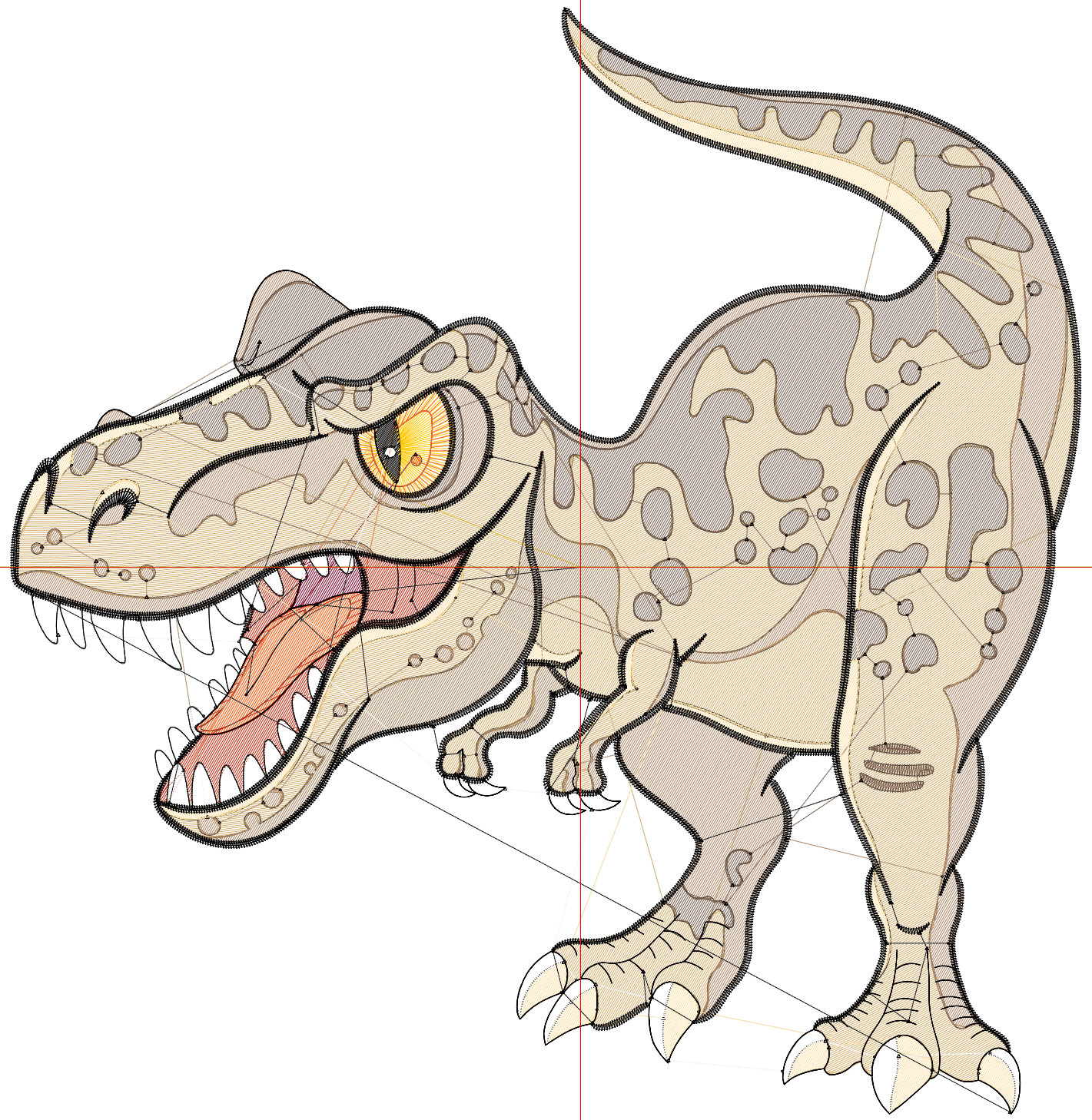
Wilcom EmbroideryStudio - Designing



Design: **7**

Title:

Stitches: 41,679
Height: 7.50 in
Width: 7.26 in
Colors: 12
Colorway: Colorway 1
Zoom: 1:1



Production Worksheet

Wilcom EmbroideryStudio - Designing



Design: **7**

Title:

Stitches: 41,679
 Height: 7.50 in
 Width: 7.26 in
 Colors: 12
 Colorway: Colorway 1
 Zoom: 1:1

Machine format: Tajima
 Color changes: 11
 Stops: 12
 Trims: 140
 Appliqués: 0
 Left: 98.2 mm
 Right: 86.2 mm
 Up: 96.4 mm
 Down: 94.2 mm
 EndX: 0.00 in
 EndY: 0.00 in
 Area 54.45 in²
 Max stitch: 7.0 mm
 Min stitch: 0.0 mm
 Max jump: 7.0 mm
 Total thread: 592.96ft
 Total bobbin: 186.99ft

Stop Sequence:

#	N#	Color	St.	Code	Name	Chart
1.	4		302	1068	Canary	Madeira Classic 40
2.	3		348	3	Red	Default
3.	11		904	1146	Tomato Red	Madeira Classic 40
4.	12		203	1178	Carrot	Madeira Classic 40
5.	13		170	13	Purple	Default
6.	5		12,914	5	Aqua	Default
7.	2		1,219		R166 G132 B94	
8.	6		5,396	6	Dark Magenta	Default
9.	14		5,930	1329	Toasted Marshmallow	Madeira Classic 40
10.	10		2,681	10	Dark Blue	Default
11.	9		1,746	9	White	Default
12.	8		9,864	8	Black	Default