

Production Worksheet

Wilcom EmbroideryStudio - Designing



Design: **3**

Title:

Stitches: 19,979
 Height: 3.48 in
 Width: 3.51 in
 Colors: 5
 Colorway: Colorway 1
 Zoom: 1:1

Machine format: Tajima
 Color changes: 4
 Stops: 5
 Trims: 146
 Appliqués: 0
 Left: 46.2 mm
 Right: 43.0 mm
 Up: 38.5 mm
 Down: 50.0 mm
 EndX: 0.00 in
 EndY: 0.00 in
 Area 12.23 in²
 Max stitch: 11.6 mm
 Min stitch: 0.0 mm
 Max jump: 6.9 mm
 Total thread: 235.53ft
 Total bobbin: 60.91ft

Stop Sequence:

#	N#	Color	St.	Code	Name	Chart
1.	8		7,173	8	Black	Default
2.	2		3,513		R106 G186 B79	
3.	1		5,504		R255 G77 B101	
4.	11		2,405	11	Dark Red	Default
5.	12		1,382	12	Orange	Default



Production Worksheet

Wilcom EmbroideryStudio - Designing



Design: **4**

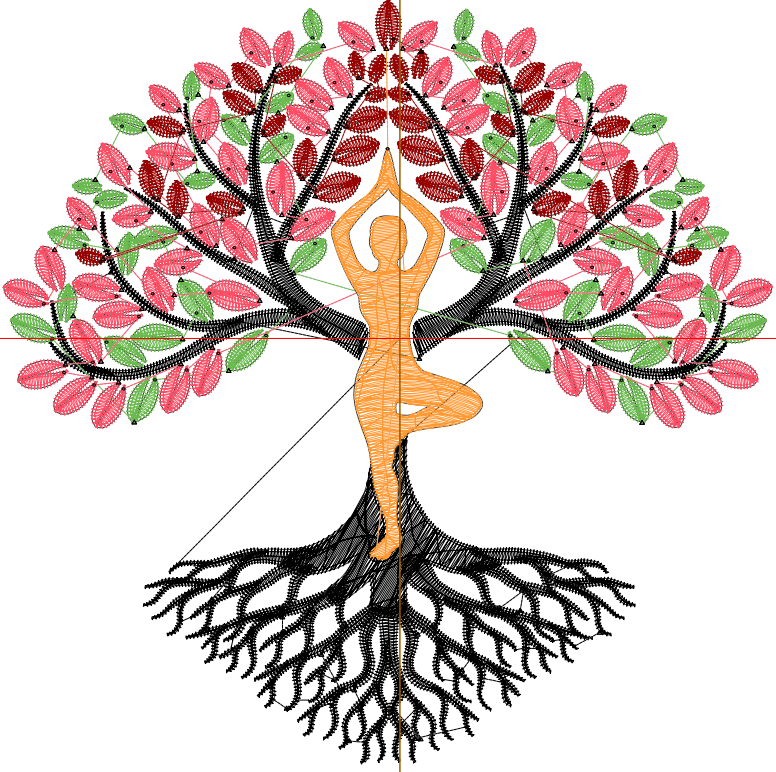
Title:

Stitches: 22,337
 Height: 3.98 in
 Width: 4.01 in
 Colors: 5
 Colorway: Colorway 1
 Zoom: 1:1

Machine format: Tajima
 Color changes: 4
 Stops: 5
 Trims: 151
 Appliqués: 0
 Left: 52.5 mm
 Right: 49.3 mm
 Up: 44.8 mm
 Down: 56.3 mm
 EndX: 0.00 in
 EndY: 0.00 in
 Area 15.96 in²
 Max stitch: 7.0 mm
 Min stitch: 0.0 mm
 Max jump: 7.0 mm
 Total thread: 273.98ft
 Total bobbin: 74.53ft

Stop Sequence:

#	N#	Color	St.	Code	Name	Chart
1.	8		8,132	8	Black	Default
2.	2		3,874		R106 G186 B79	
3.	1		6,015		R255 G77 B101	
4.	11		2,652	11	Dark Red	Default
5.	12		1,662	12	Orange	Default



Production Worksheet

Wilcom EmbroideryStudio - Designing



Design: **4**

Title:

Stitches: 24,917
 Height: 4.48 in
 Width: 4.51 in
 Colors: 5
 Colorway: Colorway 1
 Zoom: 1:1

Machine format: Tajima
 Color changes: 4
 Stops: 5
 Trims: 155
 Appliqués: 0
 Left: 58.9 mm
 Right: 55.7 mm
 Up: 51.1 mm
 Down: 62.6 mm
 EndX: 0.00 in
 EndY: 0.00 in
 Area: 20.19 in²
 Max stitch: 6.8 mm
 Min stitch: 0.0 mm
 Max jump: 6.9 mm
 Total thread: 317.07ft
 Total bobbin: 90.03ft

Stop Sequence:

#	N#	Color	St.	Code	Name	Chart
1.	8	Black	9,037	8	Black	Default
2.	2	Green	4,270		R106 G186 B79	
3.	1	Pink	6,628		R255 G77 B101	
4.	11	Dark Red	2,953	11	Dark Red	Default
5.	12	Orange	2,027	12	Orange	Default



Production Worksheet

Wilcom EmbroideryStudio - Designing



Design: **5**

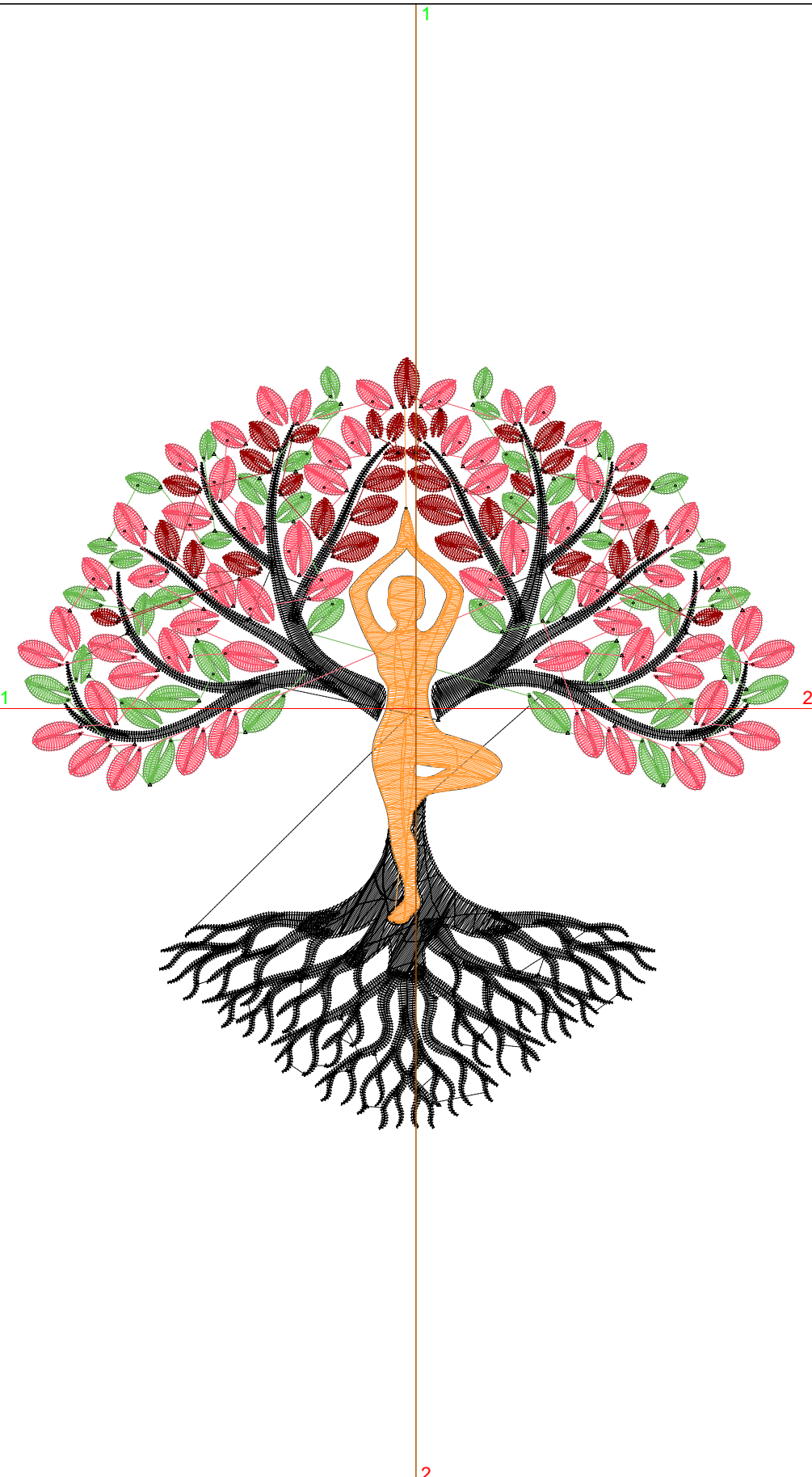
Title:

Stitches: 27,594
 Height: 4.97 in
 Width: 5.01 in
 Colors: 5
 Colorway: Colorway 1
 Zoom: 1:1

Machine format: Tajima
 Color changes: 4
 Stops: 5
 Trims: 158
 Appliqués: 0
 Left: 65.2 mm
 Right: 62.0 mm
 Up: 57.4 mm
 Down: 68.9 mm
 EndX: 0.00 in
 EndY: 0.00 in
 Area: 24.91 in²
 Max stitch: 6.7 mm
 Min stitch: 0.0 mm
 Max jump: 6.7 mm
 Total thread: 363.22ft
 Total bobbin: 106.97ft

Stop Sequence:

#	N#	Color	St.	Code	Name	Chart
1.	8	Black	10,084	8	Black	Default
2.	2	Green	4,656		R106 G186 B79	
3.	1	Red	7,306		R255 G77 B101	
4.	11	Dark Red	3,160	11	Dark Red	Default
5.	12	Orange	2,386	12	Orange	Default



Production Worksheet

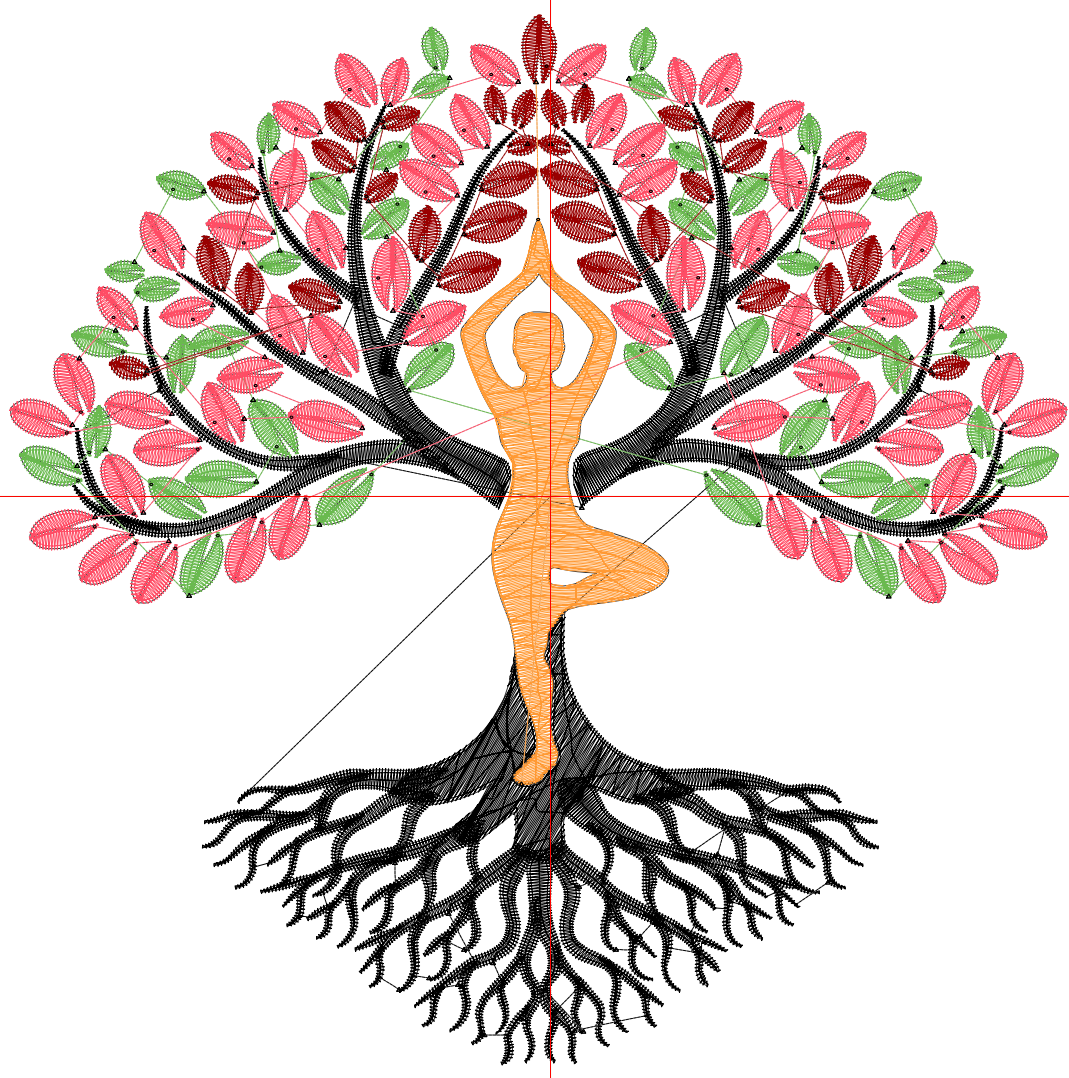
Wilcom EmbroideryStudio - Designing



Design: **5**

Title:

Stitches: 30,247
Height: 5.47 in
Width: 5.51 in
Colors: 5
Colorway: Colorway 1
Zoom: 1:1



Production Worksheet

Wilcom EmbroideryStudio - Designing



Design: **5**

Title:

Stitches: 30,247
 Height: 5.47 in
 Width: 5.51 in
 Colors: 5
 Colorway: Colorway 1
 Zoom: 1:1

Machine format: Tajima
 Color changes: 4
 Stops: 5
 Trims: 161
 Appliqués: 0
 Left: 71.6 mm
 Right: 68.4 mm
 Up: 63.7 mm
 Down: 75.2 mm
 EndX: 0.00 in
 EndY: 0.00 in
 Area 30.13 in²
 Max stitch: 6.9 mm
 Min stitch: 0.0 mm
 Max jump: 6.9 mm
 Total thread: 411.87ft
 Total bobbin: 125.49ft

Stop Sequence:

#	N#	Color	St.	Code	Name	Chart
1.	8		11,050	8	Black	Default
2.	2		5,054		R106 G186 B79	
3.	1		7,945		R255 G77 B101	
4.	11		3,461	11	Dark Red	Default
5.	12		2,735	12	Orange	Default

Production Worksheet

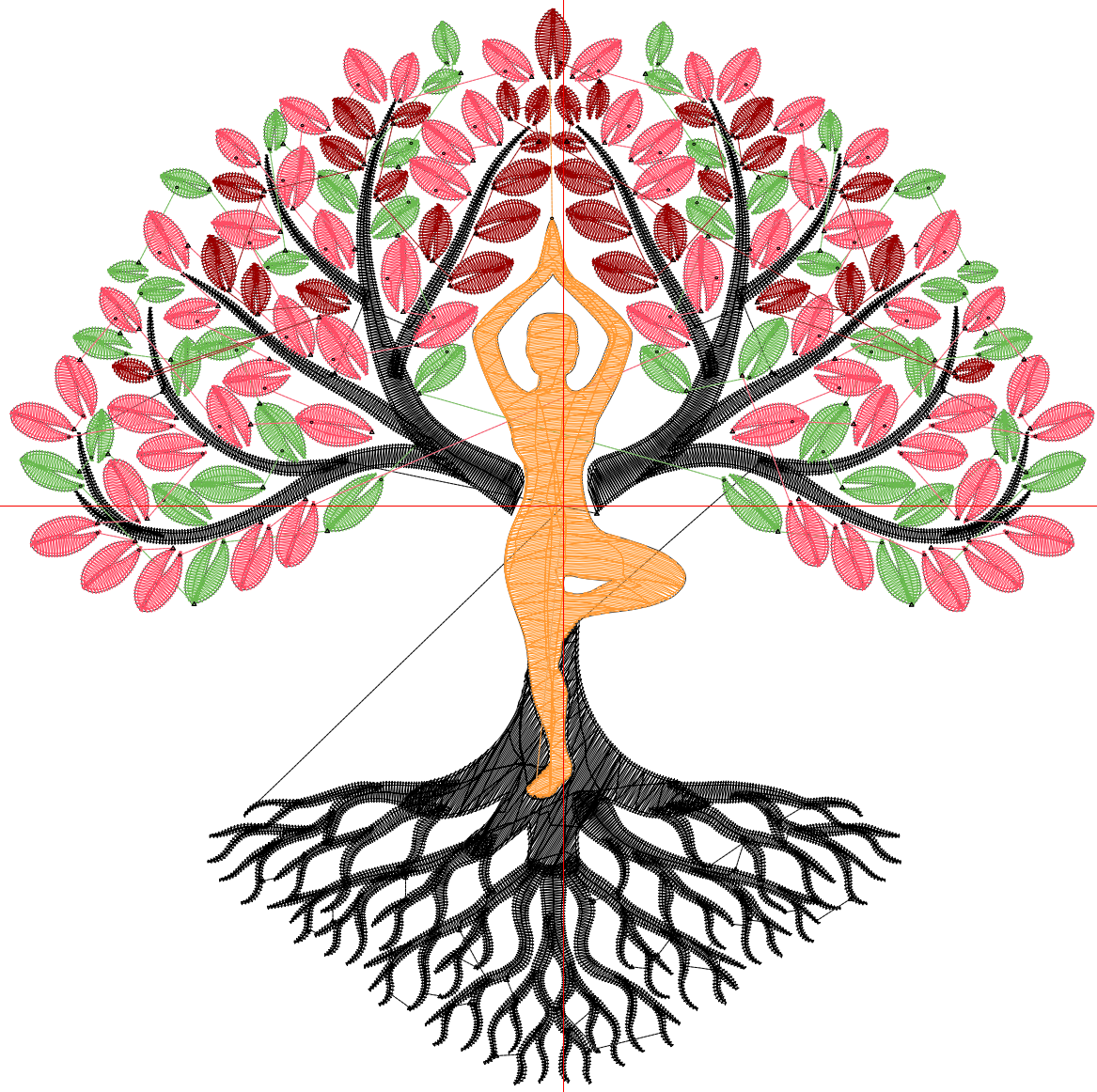
Wilcom EmbroideryStudio - Designing



Design: **6**

Title:

Stitches: 32,966
Height: 5.97 in
Width: 6.01 in
Colors: 5
Colorway: Colorway 1
Zoom: 1:1



Production Worksheet

Wilcom EmbroideryStudio - Designing



Design: **6**

Title:

Stitches: 32,966
 Height: 5.97 in
 Width: 6.01 in
 Colors: 5
 Colorway: Colorway 1
 Zoom: 1:1

Machine format: Tajima
 Color changes: 4
 Stops: 5
 Trims: 163
 Appliqués: 0
 Left: 77.9 mm
 Right: 74.7 mm
 Up: 70.0 mm
 Down: 81.5 mm
 EndX: 0.00 in
 EndY: 0.00 in
 Area 35.85 in²
 Max stitch: 7.0 mm
 Min stitch: 0.0 mm
 Max jump: 7.0 mm
 Total thread: 463.71ft
 Total bobbin: 145.63ft

Stop Sequence:

#	N#	Color	St.	Code	Name	Chart
1.	8		12,030	8	Black	Default
2.	2		5,446		R106 G186 B79	
3.	1		8,598		R255 G77 B101	
4.	11		3,701	11	Dark Red	Default
5.	12		3,189	12	Orange	Default

Production Worksheet

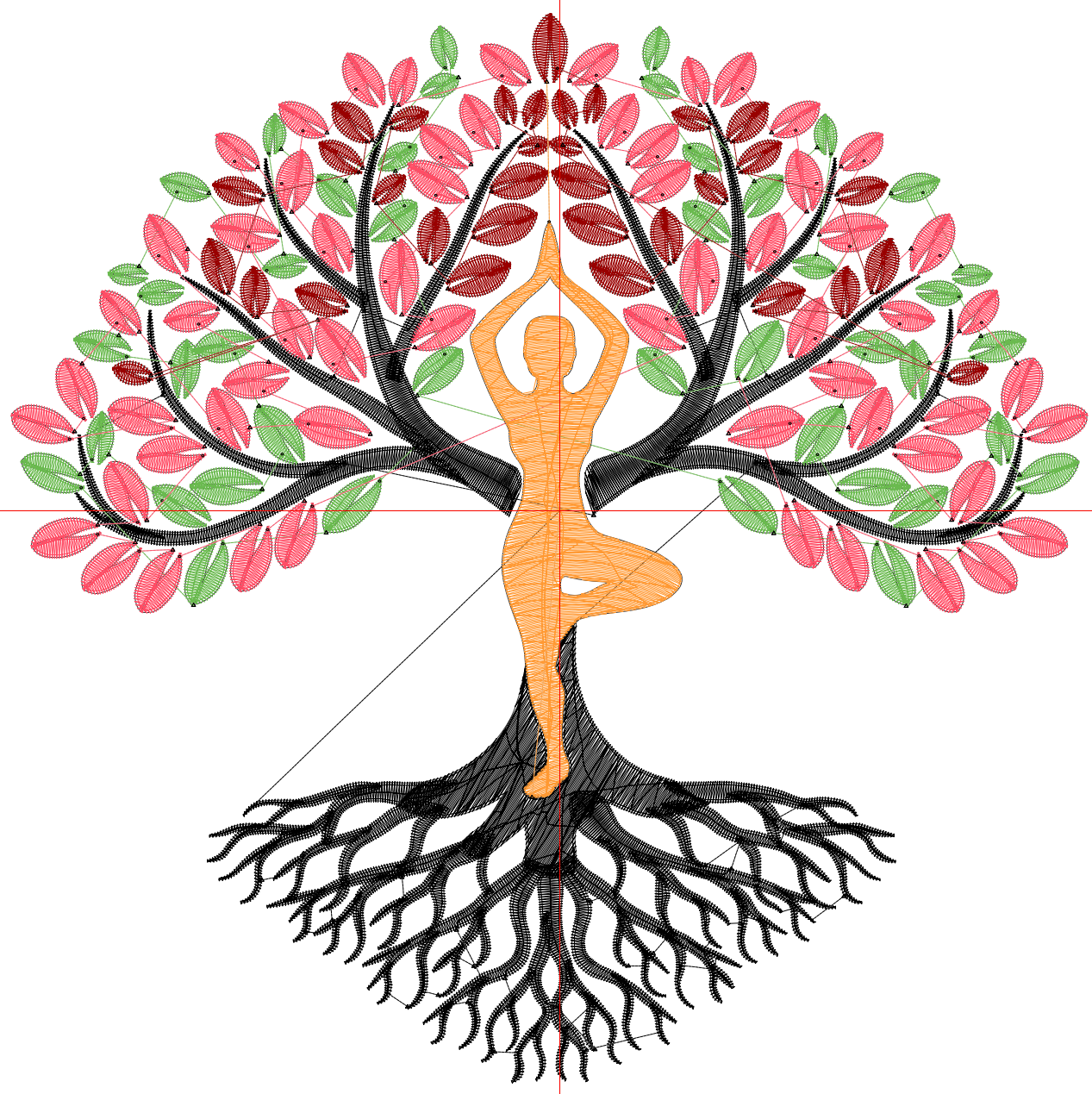
Wilcom EmbroideryStudio - Designing



Design: **6**

Title:

Stitches: 35,784
Height: 6.46 in
Width: 6.51 in
Colors: 5
Colorway: Colorway 1
Zoom: 1:1



Production Worksheet

Wilcom EmbroideryStudio - Designing



Design: **6**

Title:

Stitches: 35,784
 Height: 6.46 in
 Width: 6.51 in
 Colors: 5
 Colorway: Colorway 1
 Zoom: 1:1

Machine format: Tajima
 Color changes: 4
 Stops: 5
 Trims: 163
 Appliqués: 0
 Left: 84.3 mm
 Right: 81.1 mm
 Up: 76.3 mm
 Down: 87.8 mm
 EndX: 0.00 in
 EndY: 0.00 in
 Area 42.06 in²
 Max stitch: 6.9 mm
 Min stitch: 0.0 mm
 Max jump: 6.9 mm
 Total thread: 518.61ft
 Total bobbin: 167.21ft

Stop Sequence:

#	N#	Color	St.	Code	Name	Chart
1.	8		13,047	8	Black	Default
2.	2		5,829		R106 G186 B79	
3.	1		9,337		R255 G77 B101	
4.	11		3,994	11	Dark Red	Default
5.	12		3,575	12	Orange	Default

Production Worksheet

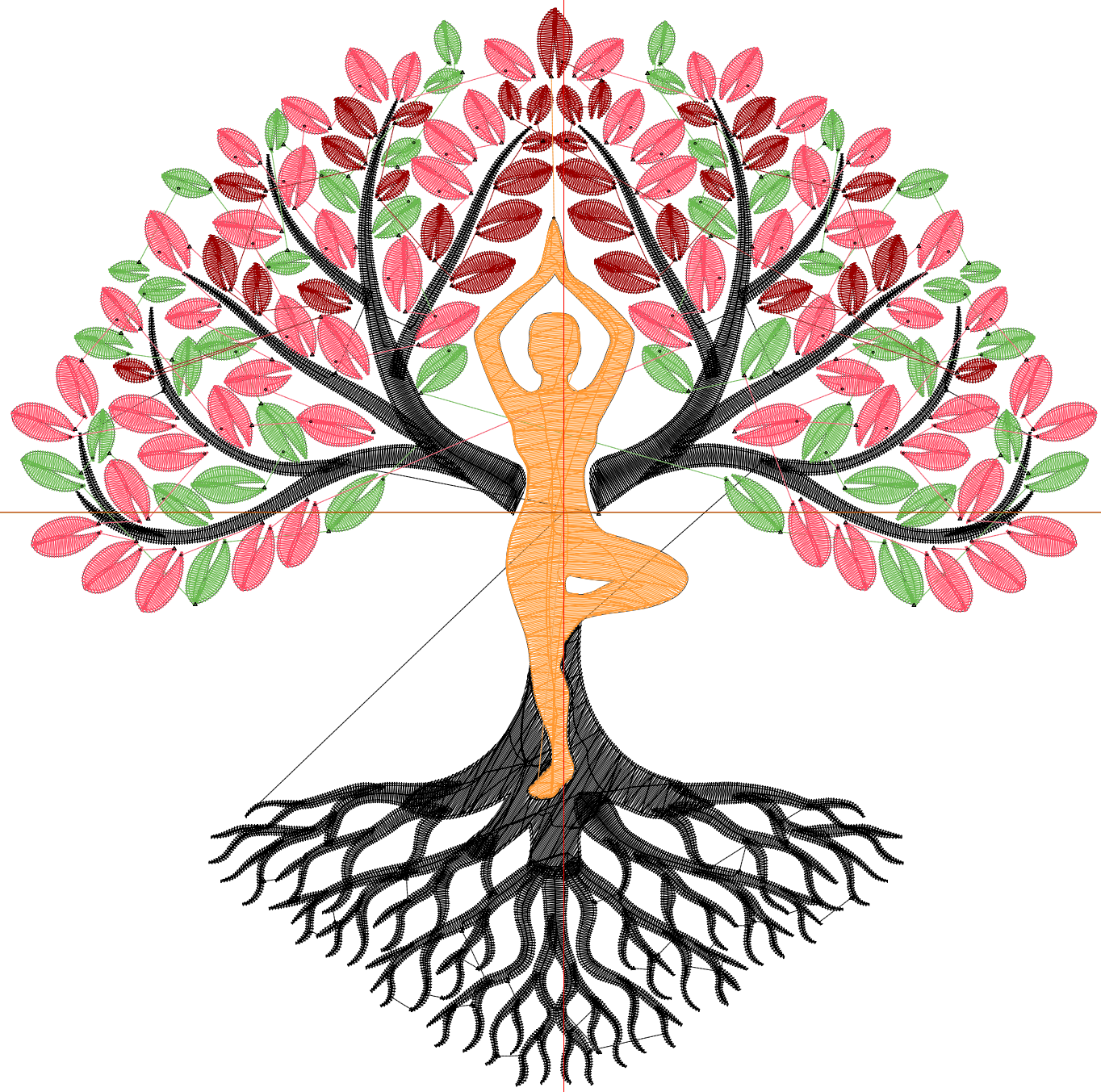
Wilcom EmbroideryStudio - Designing



Design: **7**

Title:

Stitches: 38,616
Height: 6.96 in
Width: 7.01 in
Colors: 5
Colorway: Colorway 1
Zoom: 1:1



Production Worksheet

Wilcom EmbroideryStudio - Designing



Design: **7**

Title:

Stitches: 38,616
 Height: 6.96 in
 Width: 7.01 in
 Colors: 5
 Colorway: Colorway 1
 Zoom: 1:1

Machine format: Tajima
 Color changes: 4
 Stops: 5
 Trims: 166
 Appliqués: 0
 Left: 90.6 mm
 Right: 87.4 mm
 Up: 82.6 mm
 Down: 94.1 mm
 EndX: 0.00 in
 EndY: 0.00 in
 Area 48.77 in²
 Max stitch: 7.0 mm
 Min stitch: 0.0 mm
 Max jump: 7.0 mm
 Total thread: 576.81ft
 Total bobbin: 190.69ft

Stop Sequence:

#	N#	Color	St.	Code	Name	Chart
1.	8		14,093	8	Black	Default
2.	2		6,226		R106 G186 B79	
3.	1		9,976		R255 G77 B101	
4.	11		4,252	11	Dark Red	Default
5.	12		4,067	12	Orange	Default

Production Worksheet

Wilcom EmbroideryStudio - Designing



Design: **7**

Title:

Stitches: 41,467
Height: 7.45 in
Width: 7.51 in
Colors: 5
Colorway: Colorway 1
Zoom: 1:1



Production Worksheet

Wilcom EmbroideryStudio - Designing



Design: **7**

Title:

Stitches: 41,467
 Height: 7.45 in
 Width: 7.51 in
 Colors: 5
 Colorway: Colorway 1
 Zoom: 1:1

Machine format: Tajima
 Color changes: 4
 Stops: 5
 Trims: 167
 Appliqués: 0
 Left: 97.0 mm
 Right: 93.8 mm
 Up: 88.9 mm
 Down: 100.4 mm
 EndX: 0.00 in
 EndY: 0.00 in
 Area 55.98 in²
 Max stitch: 7.2 mm
 Min stitch: 0.0 mm
 Max jump: 7.0 mm
 Total thread: 637.39ft
 Total bobbin: 215.50ft

Stop Sequence:

#	N#	Color	St.	Code	Name	Chart
1.	8		15,138	8	Black	Default
2.	2		6,644		R106 G186 B79	
3.	1		10,669		R255 G77 B101	
4.	11		4,502	11	Dark Red	Default
5.	12		4,512	12	Orange	Default