

Production Worksheet

Wilcom EmbroideryStudio - Designing



Design: **3**

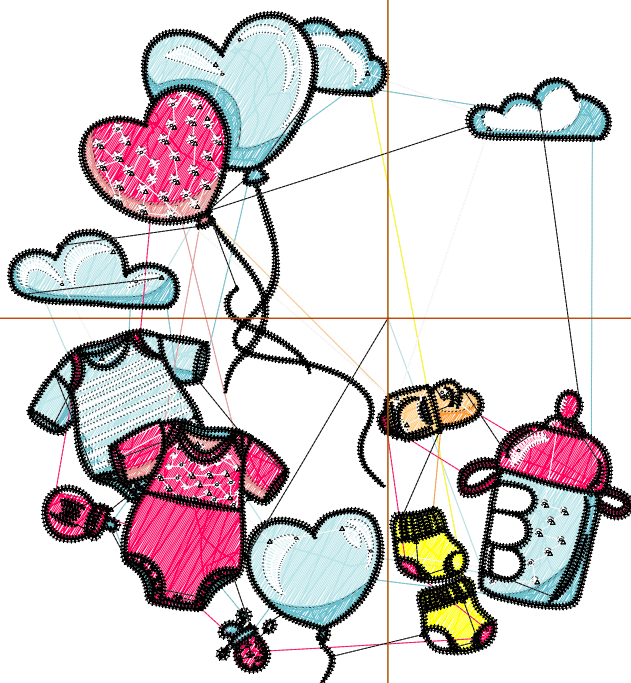
Title:

Stitches: 20,838
 Height: 3.51 in
 Width: 3.26 in
 Colors: 9
 Colorway: Colorway 1
 Zoom: 1:1

Machine format: Tajima
 Color changes: 8
 Stops: 9
 Trims: 132
 Appliqués: 0
 Left: 50.3 mm
 Right: 32.6 mm
 Up: 40.6 mm
 Down: 48.5 mm
 EndX: 0.00 in
 EndY: 0.00 in
 Area: 11.45 in²
 Max stitch: 10.8 mm
 Min stitch: 0.0 mm
 Max jump: 7.0 mm
 Total thread: 264.74ft
 Total bobbin: 74.11ft

Stop Sequence:

#	N#	Color	St.	Code	Name	Chart
1.	2		2,450		R185 G228 B232	
2.	1		2,275		R105 G192 B204	
3.	4		415	4	Yellow	Default
4.	12		76	12	Orange	Default
5.	6		2,173		R255 G0 B90	
6.	5		504		R232 G145 B144	
7.	16		228	16	Sand	Default
8.	9		3,266	9	White	Default
9.	8		9,449	8	Black	Default



Production Worksheet

Wilcom EmbroideryStudio - Designing



Design: **4**

Title:

Stitches: 23,951
 Height: 4.01 in
 Width: 3.73 in
 Colors: 9
 Colorway: Colorway 1
 Zoom: 1:1

Machine format: Tajima
 Color changes: 8
 Stops: 9
 Trims: 142
 Appliqués: 0
 Left: 56.2 mm
 Right: 38.5 mm
 Up: 47.0 mm
 Down: 54.9 mm
 EndX: 0.00 in
 EndY: 0.00 in
 Area: 14.95 in²
 Max stitch: 7.0 mm
 Min stitch: 0.0 mm
 Max jump: 7.0 mm
 Total thread: 315.38ft
 Total bobbin: 92.01ft

Stop Sequence:

#	N#	Color	St.	Code	Name	Chart
1.	2		2,988		R185 G228 B232	
2.	1		2,612		R105 G192 B204	
3.	4		497	4	Yellow	Default
4.	12		89	12	Orange	Default
5.	6		2,616		R255 G0 B90	
6.	5		564		R232 G145 B144	
7.	16		269	16	Sand	Default
8.	9		3,749	9	White	Default
9.	8		10,565	8	Black	Default



Production Worksheet

Wilcom EmbroideryStudio - Designing



Design: **4**

Title:

Stitches: 27,001
 Height: 4.51 in
 Width: 4.19 in
 Colors: 9
 Colorway: Colorway 1
 Zoom: 1:1

Machine format: Tajima
 Color changes: 8
 Stops: 9
 Trims: 152
 Appliqués: 0
 Left: 62.1 mm
 Right: 44.4 mm
 Up: 53.3 mm
 Down: 61.2 mm
 EndX: 0.00 in
 EndY: 0.00 in
 Area: 18.90 in²
 Max stitch: 7.1 mm
 Min stitch: 0.0 mm
 Max jump: 7.0 mm
 Total thread: 368.38ft
 Total bobbin: 111.56ft

Stop Sequence:

#	N#	Color	St.	Code	Name	Chart
1.	2		3,516		R185 G228 B232	
2.	1		2,982		R105 G192 B204	
3.	4		571	4	Yellow	Default
4.	12		103	12	Orange	Default
5.	6		3,070		R255 G0 B90	
6.	5		631		R232 G145 B144	
7.	16		313	16	Sand	Default
8.	9		4,054	9	White	Default
9.	8		11,759	8	Black	Default



Production Worksheet

Wilcom EmbroideryStudio - Designing



Design: **5**

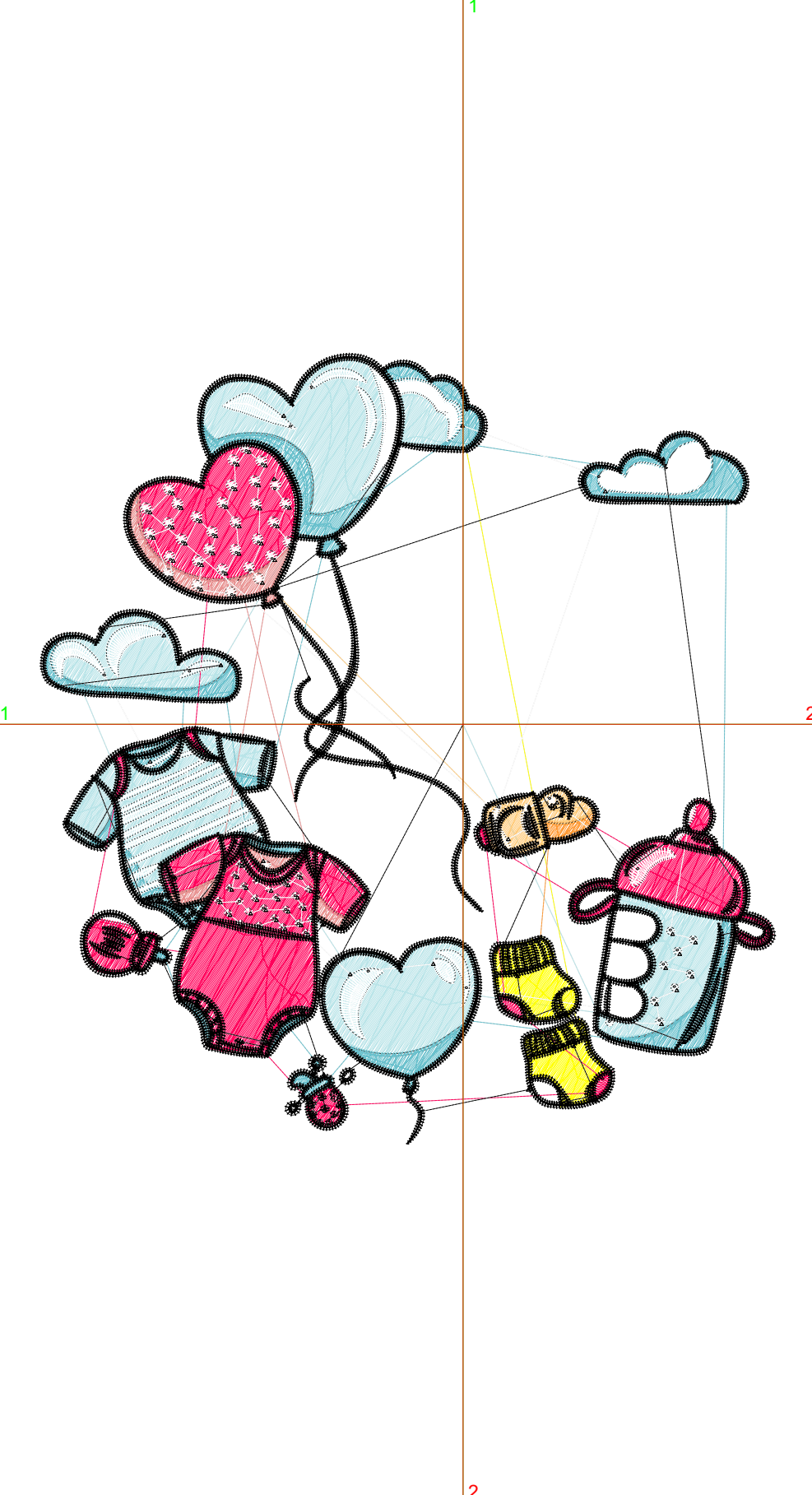
Title:

Stitches: 30,280
 Height: 5.01 in
 Width: 4.66 in
 Colors: 9
 Colorway: Colorway 1
 Zoom: 1:1

Machine format: Tajima
 Color changes: 8
 Stops: 9
 Trims: 156
 Appliqués: 0
 Left: 68.0 mm
 Right: 50.3 mm
 Up: 59.7 mm
 Down: 67.6 mm
 EndX: 0.00 in
 EndY: 0.00 in
 Area: 23.33 in²
 Max stitch: 12.1 mm
 Min stitch: 0.0 mm
 Max jump: 7.0 mm
 Total thread: 426.34ft
 Total bobbin: 133.16ft

Stop Sequence:

#	N#	Color	St.	Code	Name	Chart
1.	2		4,116		R185 G228 B232	
2.	1		3,315		R105 G192 B204	
3.	4		671	4	Yellow	Default
4.	12		114	12	Orange	Default
5.	6		3,563		R255 G0 B90	
6.	5		701		R232 G145 B144	
7.	16		349	16	Sand	Default
8.	9		4,482	9	White	Default
9.	8		12,967	8	Black	Default



Production Worksheet

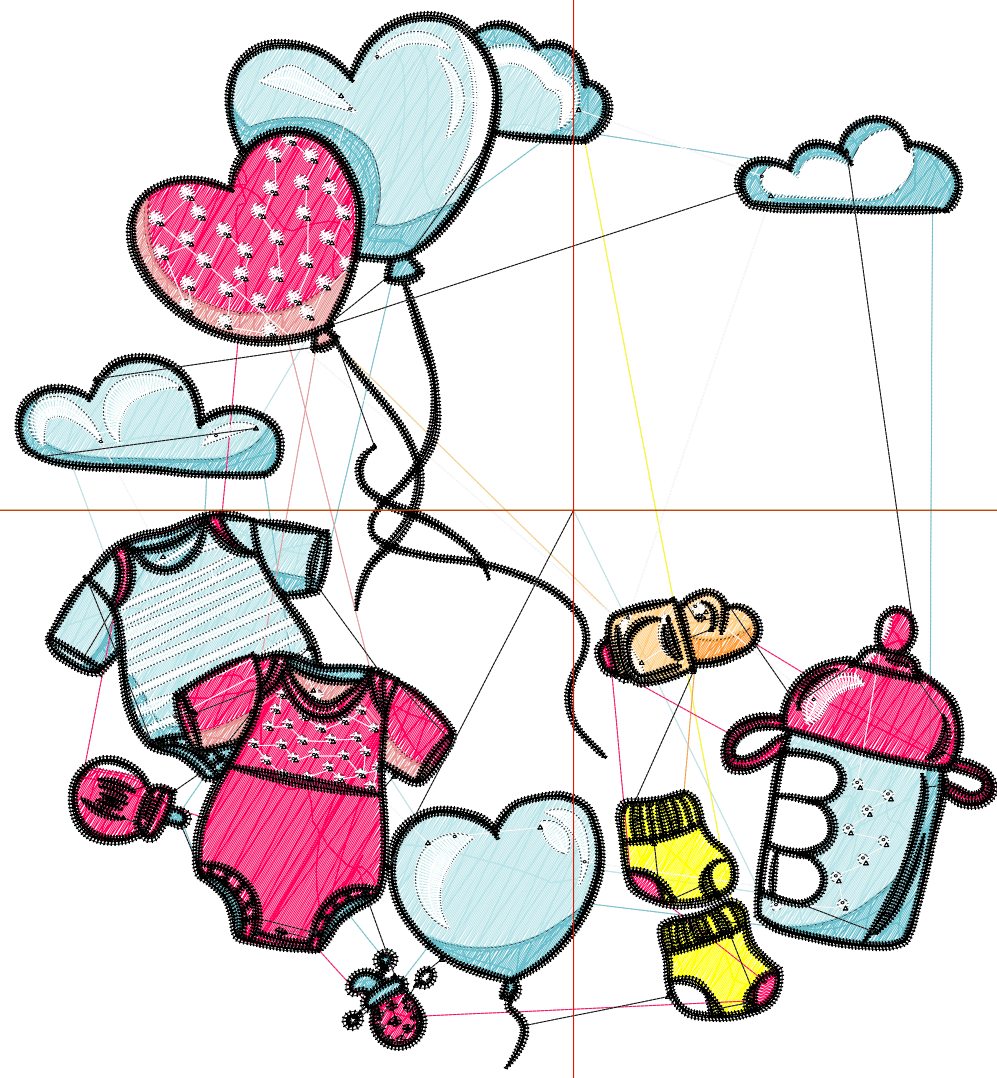
Wilcom EmbroideryStudio - Designing



Design: **5**

Title:

Stitches: 34,010
Height: 5.51 in
Width: 5.12 in
Colors: 9
Colorway: Colorway 1
Zoom: 1:1



Production Worksheet

Wilcom EmbroideryStudio - Designing



Design: **5**

Title:

Stitches: 34,010
 Height: 5.51 in
 Width: 5.12 in
 Colors: 9
 Colorway: Colorway 1
 Zoom: 1:1

Machine format: Tajima
 Color changes: 8
 Stops: 9
 Trims: 163
 Appliqués: 0
 Left: 73.9 mm
 Right: 56.2 mm
 Up: 66.0 mm
 Down: 73.9 mm
 EndX: 0.00 in
 EndY: 0.00 in
 Area 28.21 in²
 Max stitch: 8.3 mm
 Min stitch: 0.0 mm
 Max jump: 7.0 mm
 Total thread: 491.18ft
 Total bobbin: 157.07ft

Stop Sequence:

#	N#	Color	St.	Code	Name	Chart
1.	2		4,723		R185 G228 B232	
2.	1		3,677		R105 G192 B204	
3.	4		761	4	Yellow	Default
4.	12		128	12	Orange	Default
5.	6		4,091		R255 G0 B90	
6.	5		783		R232 G145 B144	
7.	16		403	16	Sand	Default
8.	9		5,190	9	White	Default
9.	8		14,252	8	Black	Default

Production Worksheet

Wilcom EmbroideryStudio - Designing



Design: **6**

Title:

Stitches: 37,631
Height: 6.01 in
Width: 5.59 in
Colors: 9
Colorway: Colorway 1
Zoom: 1:1



Production Worksheet

Wilcom EmbroideryStudio - Designing



Design: **6**

Title:

Stitches: 37,631
 Height: 6.01 in
 Width: 5.59 in
 Colors: 9
 Colorway: Colorway 1
 Zoom: 1:1

Machine format: Tajima
 Color changes: 8
 Stops: 9
 Trims: 169
 Appliqués: 0
 Left: 79.8 mm
 Right: 62.1 mm
 Up: 72.4 mm
 Down: 80.3 mm
 EndX: 0.00 in
 EndY: 0.00 in
 Area 33.57 in²
 Max stitch: 9.5 mm
 Min stitch: 0.0 mm
 Max jump: 7.0 mm
 Total thread: 558.23ft
 Total bobbin: 182.73ft

Stop Sequence:

#	N#	Color	St.	Code	Name	Chart
1.	2		5,417		R185 G228 B232	
2.	1		4,086		R105 G192 B204	
3.	4		869	4	Yellow	Default
4.	12		137	12	Orange	Default
5.	6		4,708		R255 G0 B90	
6.	5		868		R232 G145 B144	
7.	16		454	16	Sand	Default
8.	9		5,619	9	White	Default
9.	8		15,471	8	Black	Default

Production Worksheet

Wilcom EmbroideryStudio - Designing



Design: **6**

Title:

Stitches: 41,230
Height: 6.51 in
Width: 6.05 in
Colors: 9
Colorway: Colorway 1
Zoom: 1:1



Production Worksheet

Wilcom EmbroideryStudio - Designing



Design: **6**

Title:

Stitches: 41,230
 Height: 6.51 in
 Width: 6.05 in
 Colors: 9
 Colorway: Colorway 1
 Zoom: 1:1

Machine format: Tajima
 Color changes: 8
 Stops: 9
 Trims: 177
 Appliqués: 0
 Left: 85.7 mm
 Right: 68.0 mm
 Up: 78.7 mm
 Down: 86.6 mm
 EndX: 0.00 in
 EndY: 0.00 in
 Area 39.38 in²
 Max stitch: 6.9 mm
 Min stitch: 0.0 mm
 Max jump: 6.9 mm
 Total thread: 627.81ft
 Total bobbin: 209.97ft

Stop Sequence:

#	N#	Color	St.	Code	Name	Chart
1.	2		6,141		R185 G228 B232	
2.	1		4,459		R105 G192 B204	
3.	4		968	4	Yellow	Default
4.	12		146	12	Orange	Default
5.	6		5,315		R255 G0 B90	
6.	5		943		R232 G145 B144	
7.	16		517	16	Sand	Default
8.	9		6,028	9	White	Default
9.	8		16,711	8	Black	Default

Production Worksheet

Wilcom EmbroideryStudio - Designing



Design: 7

Title:

Stitches: 44,952
Height: 7.01 in
Width: 6.52 in
Colors: 9
Colorway: Colorway 1
Zoom: 1:1



1

1

2

2

Production Worksheet

Wilcom EmbroideryStudio - Designing



Design: **7**

Title:

Stitches: 44,952
 Height: 7.01 in
 Width: 6.52 in
 Colors: 9
 Colorway: Colorway 1
 Zoom: 1:1

Machine format: Tajima
 Color changes: 8
 Stops: 9
 Trims: 183
 Appliqués: 0
 Left: 91.6 mm
 Right: 73.9 mm
 Up: 85.1 mm
 Down: 93.0 mm
 EndX: 0.00 in
 EndY: 0.00 in
 Area 45.66 in²
 Max stitch: 7.0 mm
 Min stitch: 0.0 mm
 Max jump: 7.0 mm
 Total thread: 701.67ft
 Total bobbin: 239.26ft

Stop Sequence:

#	N#	Color	St.	Code	Name	Chart
1.	2		6,952		R185 G228 B232	
2.	1		4,882		R105 G192 B204	
3.	4		1,095	4	Yellow	Default
4.	12		164	12	Orange	Default
5.	6		5,960		R255 G0 B90	
6.	5		1,024		R232 G145 B144	
7.	16		567	16	Sand	Default
8.	9		6,357	9	White	Default
9.	8		17,949	8	Black	Default

Production Worksheet

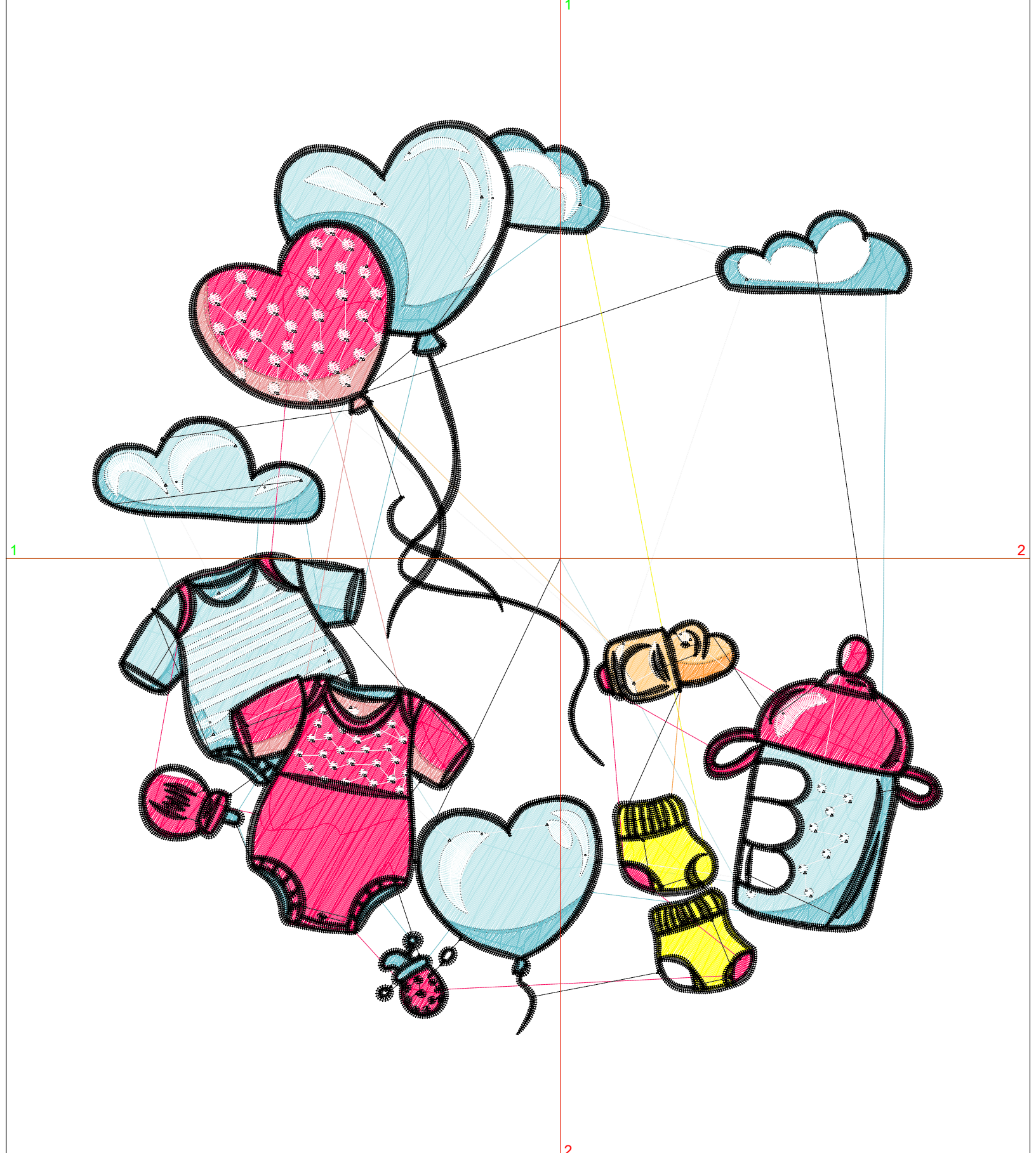
Wilcom EmbroideryStudio - Designing



Design: 7

Title:

Stitches: 48,738
Height: 7.51 in
Width: 6.98 in
Colors: 9
Colorway: Colorway 1
Zoom: 1:1



Production Worksheet

Wilcom EmbroideryStudio - Designing



Design: **7**

Title:

Stitches: 48,738
 Height: 7.51 in
 Width: 6.98 in
 Colors: 9
 Colorway: Colorway 1
 Zoom: 1:1

Machine format: Tajima
 Color changes: 8
 Stops: 9
 Trims: 186
 Appliqués: 0
 Left: 97.5 mm
 Right: 79.8 mm
 Up: 91.4 mm
 Down: 99.3 mm
 EndX: 0.00 in
 EndY: 0.00 in
 Area 52.40 in²
 Max stitch: 6.9 mm
 Min stitch: 0.0 mm
 Max jump: 7.0 mm
 Total thread: 778.76ft
 Total bobbin: 270.23ft

Stop Sequence:

#	N#	Color	St.	Code	Name	Chart
1.	2		7,755		R185 G228 B232	
2.	1		5,306		R105 G192 B204	
3.	4		1,209	4	Yellow	Default
4.	12		175	12	Orange	Default
5.	6		6,673		R255 G0 B90	
6.	5		1,130		R232 G145 B144	
7.	16		625	16	Sand	Default
8.	9		6,701	9	White	Default
9.	8		19,162	8	Black	Default