

Production Worksheet

Wilcom EmbroideryStudio - Designing



Design: **3**

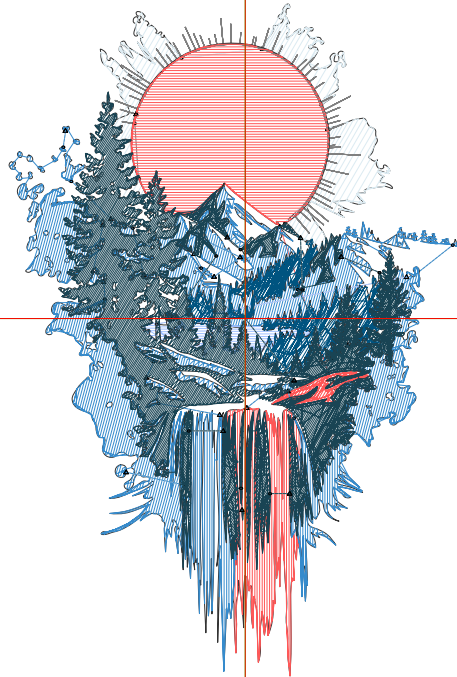
Title:

Stitches: 14,140
 Height: 3.50 in
 Width: 2.33 in
 Colors: 7
 Colorway: Colorway 1
 Zoom: 1:1

Machine format: Tajima
 Color changes: 6
 Stops: 7
 Trims: 30
 Appliqués: 0
 Left: 31.1 mm
 Right: 28.2 mm
 Up: 41.5 mm
 Down: 47.3 mm
 EndX: 0.00 in
 EndY: 0.00 in
 Area 8.16 in²
 Max stitch: 8.6 mm
 Min stitch: 0.0 mm
 Max jump: 6.8 mm
 Total thread: 168.18ft
 Total bobbin: 43.32ft

Stop Sequence:

#	N#	Color	St.	Code	Name	Chart
1.	1		479		R220 G235 B242	
2.	7		728	7	Green	Default
3.	3		1,263	3	Red	Default
4.	6		3,411		R54 G139 B204	
5.	10		275	10	Dark Blue	Default
6.	2		1,348	2	Blue	Default
7.	4		6,634		R25 G68 B84	



Production Worksheet

Wilcom EmbroideryStudio - Designing



Design: **4**

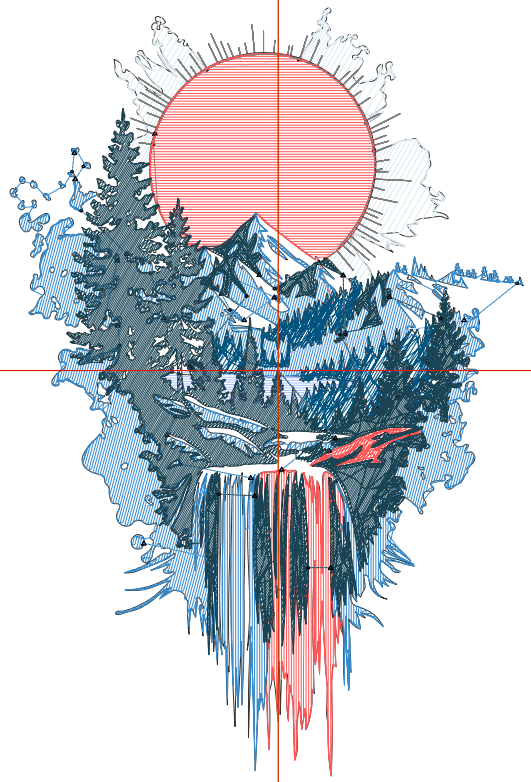
Title:

Stitches: 16,385
 Height: 4.00 in
 Width: 2.67 in
 Colors: 7
 Colorway: Colorway 1
 Zoom: 1:1

Machine format: Tajima
 Color changes: 6
 Stops: 7
 Trims: 32
 Appliqués: 0
 Left: 35.4 mm
 Right: 32.3 mm
 Up: 47.9 mm
 Down: 53.7 mm
 EndX: 0.00 in
 EndY: 0.00 in
 Area: 10.66 in²
 Max stitch: 9.4 mm
 Min stitch: 0.0 mm
 Max jump: 6.3 mm
 Total thread: 199.61ft
 Total bobbin: 53.22ft

Stop Sequence:

#	N#	Color	St.	Code	Name	Chart
1.	1		591	R220	G235 B242	
2.	7		825	7	Green	Default
3.	3		1,480	3	Red	Default
4.	6		3,899	R54	G139 B204	
5.	10		321	10	Dark Blue	Default
6.	2		1,557	2	Blue	Default
7.	4		7,710	R25	G68 B84	



Production Worksheet

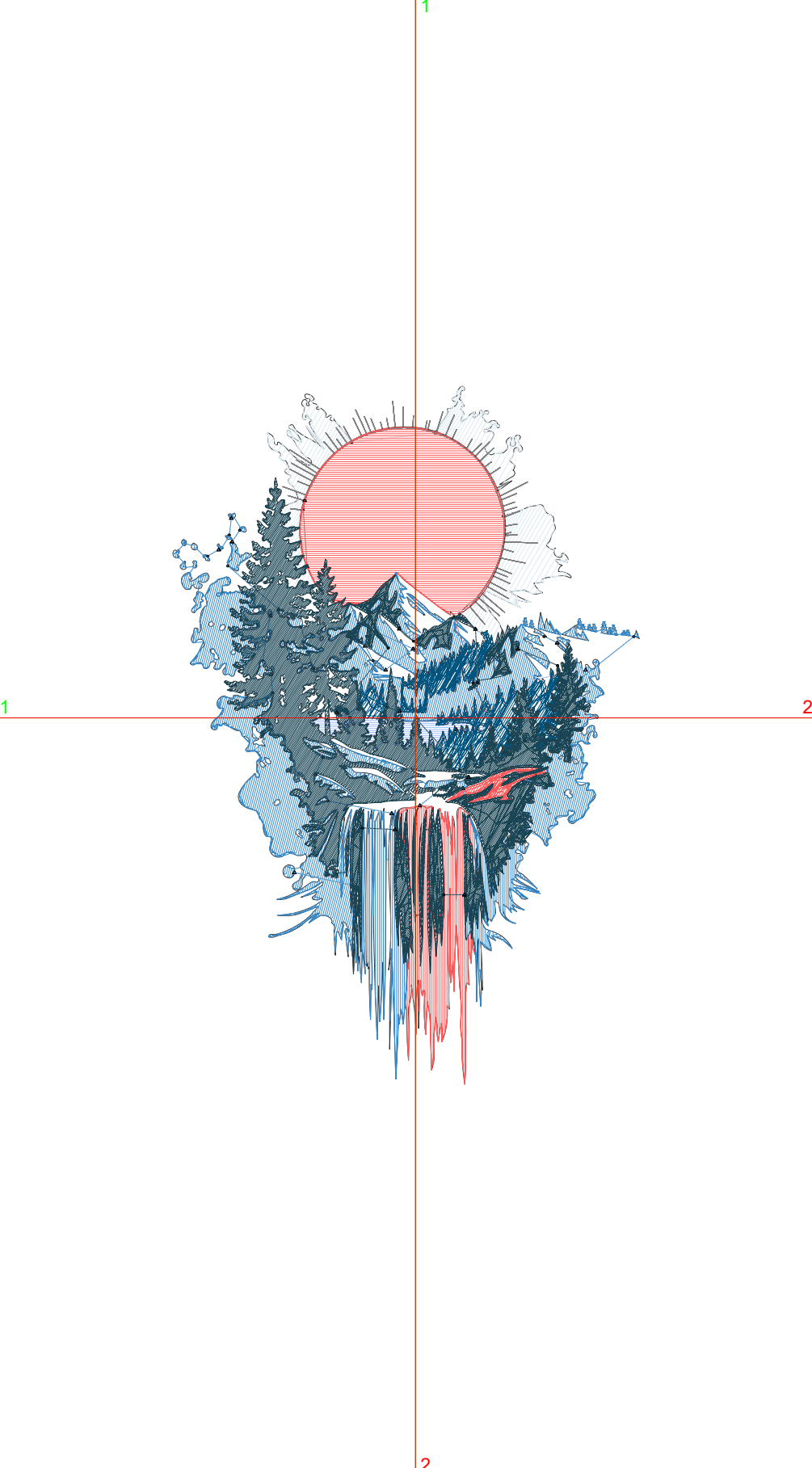
Wilcom EmbroideryStudio - Designing



Design: **4**

Title:

Stitches: 18,961
 Height: 4.50 in
 Width: 3.00 in
 Colors: 7
 Colorway: Colorway 1
 Zoom: 1:1



Machine format: Tajima
 Color changes: 6
 Stops: 7
 Trims: 34
 Appliqués: 0
 Left: 39.7 mm
 Right: 36.5 mm
 Up: 54.3 mm
 Down: 60.0 mm
 EndX: 0.00 in
 EndY: 0.00 in
 Area: 13.49 in²
 Max stitch: 10.6 mm
 Min stitch: 0.0 mm
 Max jump: 6.2 mm
 Total thread: 235.88ft
 Total bobbin: 64.69ft

Stop Sequence:

#	N#	Color	St.	Code	Name	Chart
1.	1		661		R220 G235 B242	
2.	7		925	7	Green	Default
3.	3		1,783	3	Red	Default
4.	6		4,544		R54 G139 B204	
5.	10		374	10	Dark Blue	Default
6.	2		1,831	2	Blue	Default
7.	4		8,841		R25 G68 B84	

Production Worksheet

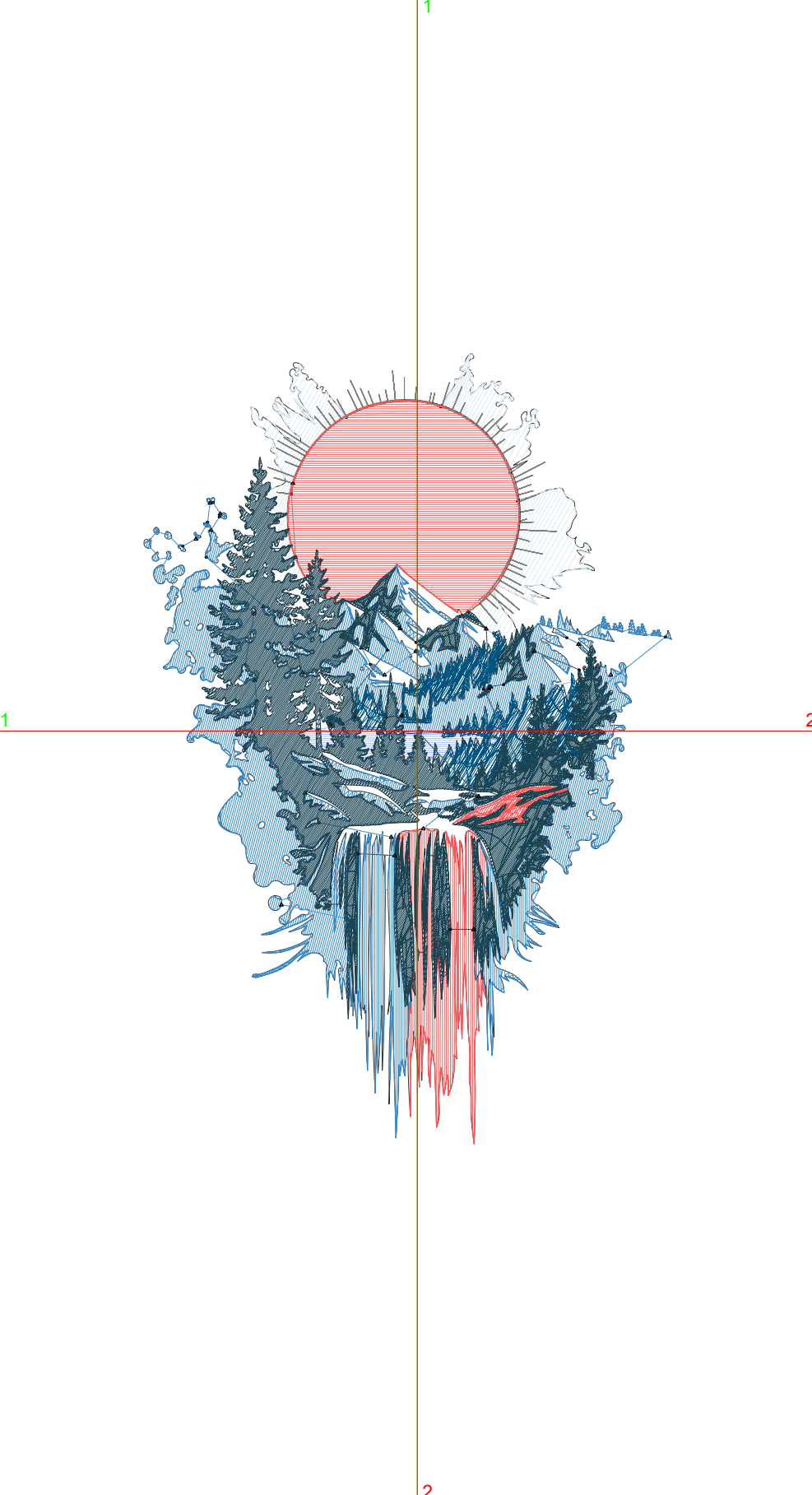
Wilcom EmbroideryStudio - Designing



Design: **5**

Title:

Stitches: 21,704
 Height: 5.00 in
 Width: 3.34 in
 Colors: 7
 Colorway: Colorway 1
 Zoom: 1:1



Machine format: Tajima
 Color changes: 6
 Stops: 7
 Trims: 37
 Appliqués: 0
 Left: 43.9 mm
 Right: 40.9 mm
 Up: 60.6 mm
 Down: 66.3 mm
 EndX: 0.00 in
 EndY: 0.00 in
 Area: 16.69 in²
 Max stitch: 12.0 mm
 Min stitch: 0.0 mm
 Max jump: 6.9 mm
 Total thread: 275.87ft
 Total bobbin: 77.72ft

Stop Sequence:

#	N#	Color	St.	Code	Name	Chart
1.	1		755		R220 G235 B242	
2.	7		997	7	Green	Default
3.	3		2,088	3	Red	Default
4.	6		5,147		R54 G139 B204	
5.	10		439	10	Dark Blue	Default
6.	2		2,076	2	Blue	Default
7.	4		10,200		R25 G68 B84	

Production Worksheet

Wilcom EmbroideryStudio - Designing



Design: **5**

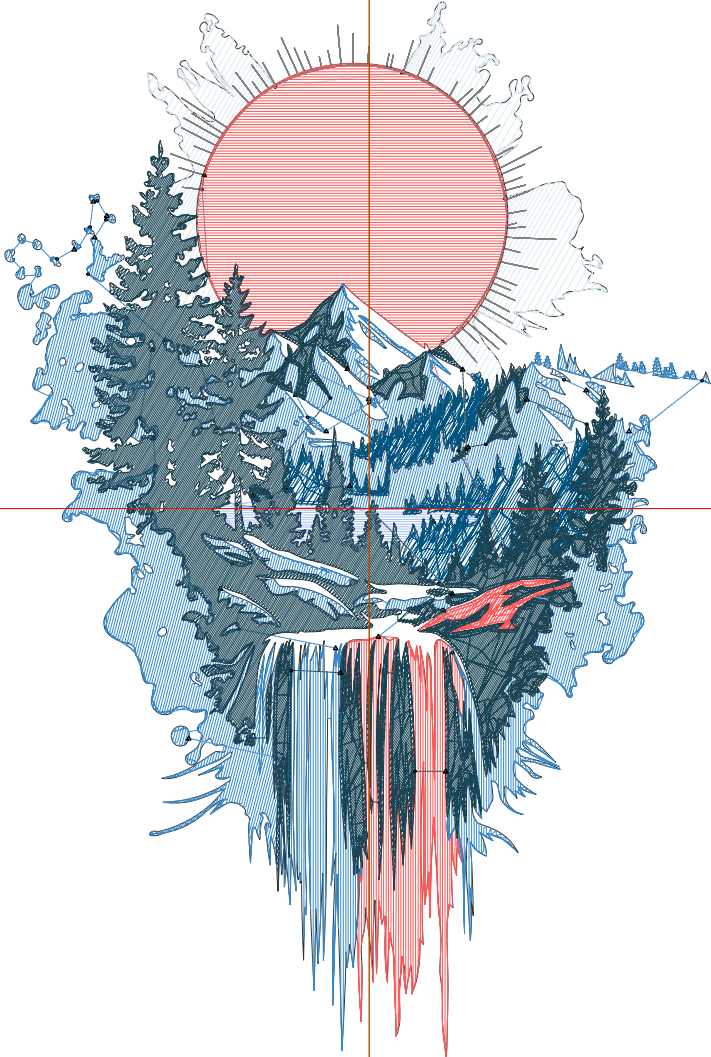
Title:

Stitches: 24,399
 Height: 5.50 in
 Width: 3.67 in
 Colors: 7
 Colorway: Colorway 1
 Zoom: 1:1

Machine format: Tajima
 Color changes: 6
 Stops: 7
 Trims: 37
 Appliqués: 0
 Left: 48.1 mm
 Right: 45.1 mm
 Up: 67.0 mm
 Down: 72.7 mm
 EndX: 0.00 in
 EndY: 0.00 in
 Area: 20.17 in²
 Max stitch: 11.3 mm
 Min stitch: 0.0 mm
 Max jump: 6.5 mm
 Total thread: 316.24ft
 Total bobbin: 91.17ft

Stop Sequence:

#	N#	Color	St.	Code	Name	Chart
1.	1		848		R220 G235 B242	
2.	7		1,076	7	Green	Default
3.	3		2,315	3	Red	Default
4.	6		5,850		R54 G139 B204	
5.	10		479	10	Dark Blue	Default
6.	2		2,319	2	Blue	Default
7.	4		11,510		R25 G68 B84	



Production Worksheet

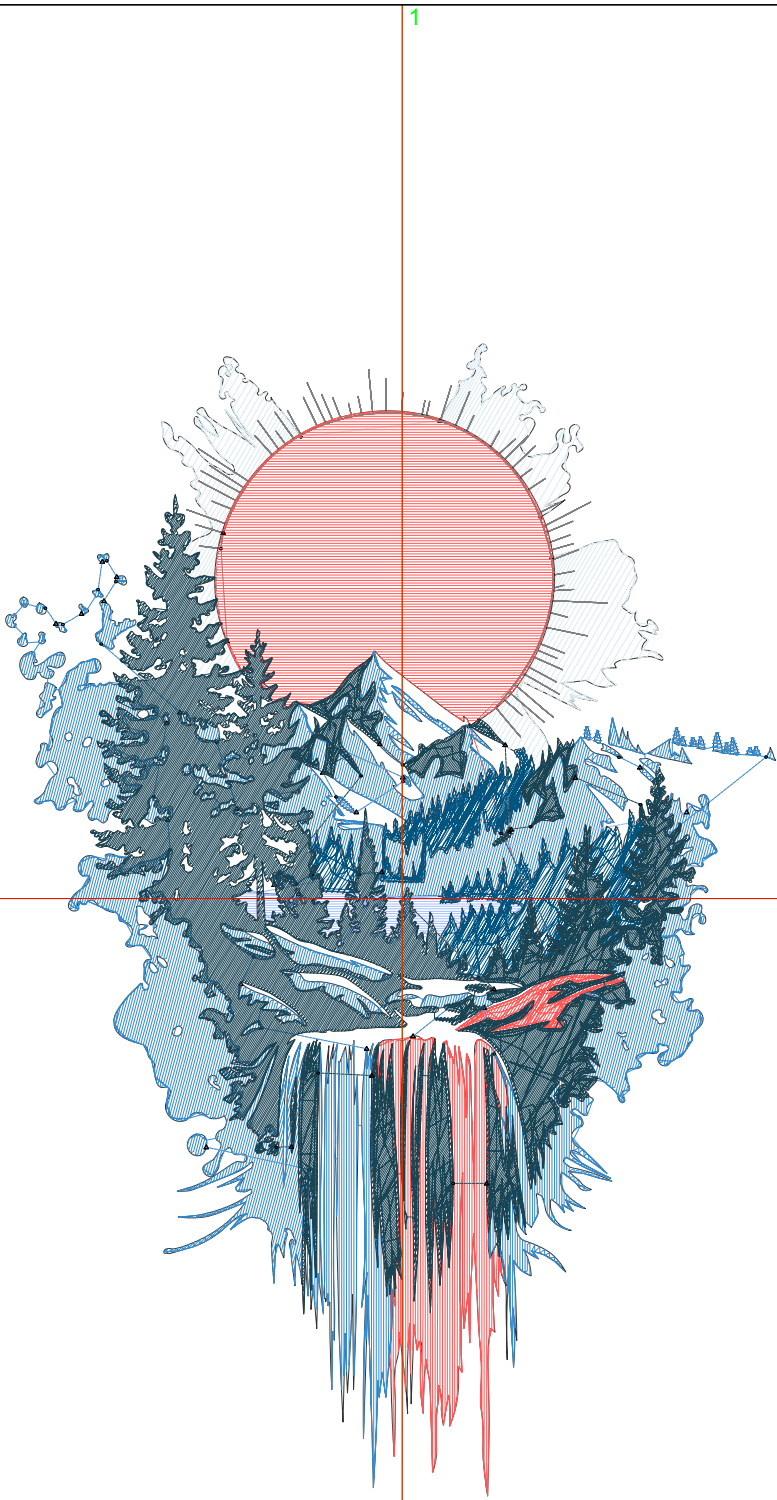
Wilcom EmbroideryStudio - Designing



Design: **6**

Title:

Stitches: 27,185
Height: 6.00 in
Width: 4.00 in
Colors: 7
Colorway: Colorway 1
Zoom: 1:1



Machine format: Tajima
Color changes: 6
Stops: 7
Trims: 40
Appliqués: 0
Left: 52.3 mm
Right: 49.3 mm
Up: 73.3 mm
Down: 79.0 mm
EndX: 0.00 in
EndY: 0.00 in
Area: 23.99 in²
Max stitch: 11.9 mm
Min stitch: 0.0 mm
Max jump: 6.7 mm
Total thread: 359.21ft
Total bobbin: 105.80ft

Stop Sequence:

#	N#	Color	St.	Code	Name	Chart
1.	1		929		R220 G235 B242	
2.	7		1,152	7	Green	Default
3.	3		2,611	3	Red	Default
4.	6		6,466		R54 G139 B204	
5.	10		547	10	Dark Blue	Default
6.	2		2,620	2	Blue	Default
7.	4		12,858		R25 G68 B84	

Production Worksheet

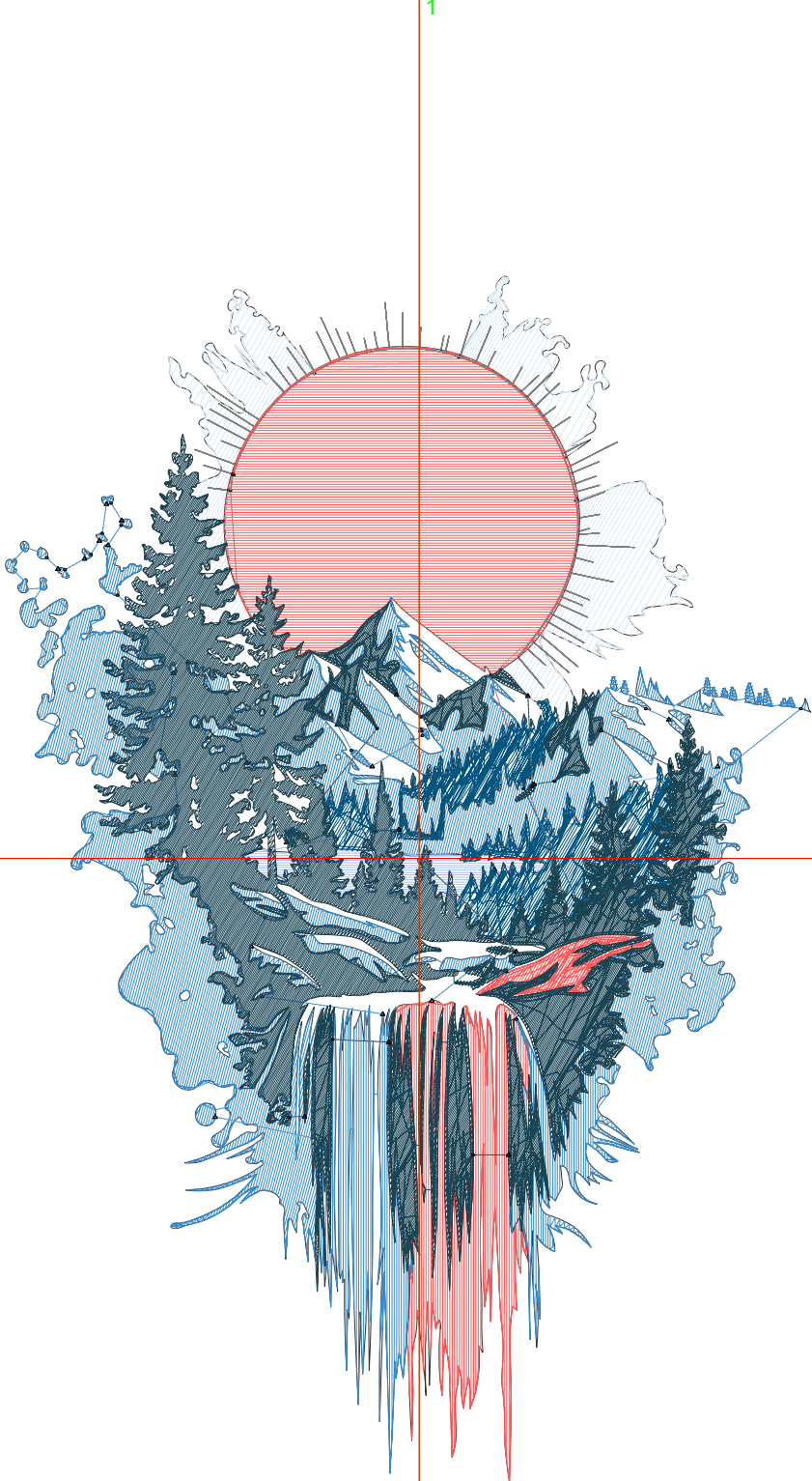
Wilcom EmbroideryStudio - Designing



Design: **6**

Title:

Stitches: 30,165
 Height: 6.50 in
 Width: 4.33 in
 Colors: 7
 Colorway: Colorway 1
 Zoom: 1:1



Machine format: Tajima
 Color changes: 6
 Stops: 7
 Trims: 42
 Appliqués: 0
 Left: 56.5 mm
 Right: 53.4 mm
 Up: 79.7 mm
 Down: 85.4 mm
 EndX: 0.00 in
 EndY: 0.00 in
 Area: 28.13 in²
 Max stitch: 11.2 mm
 Min stitch: 0.0 mm
 Max jump: 6.8 mm
 Total thread: 404.77ft
 Total bobbin: 121.21ft

Stop Sequence:

#	N#	Color	St.	Code	Name	Chart
1.	1		1,051		R220 G235 B242	
2.	7		1,247	7	Green	Default
3.	3		2,970	3	Red	Default
4.	6		7,231		R54 G139 B204	
5.	10		582	10	Dark Blue	Default
6.	2		2,831	2	Blue	Default
7.	4		14,251		R25 G68 B84	

Production Worksheet

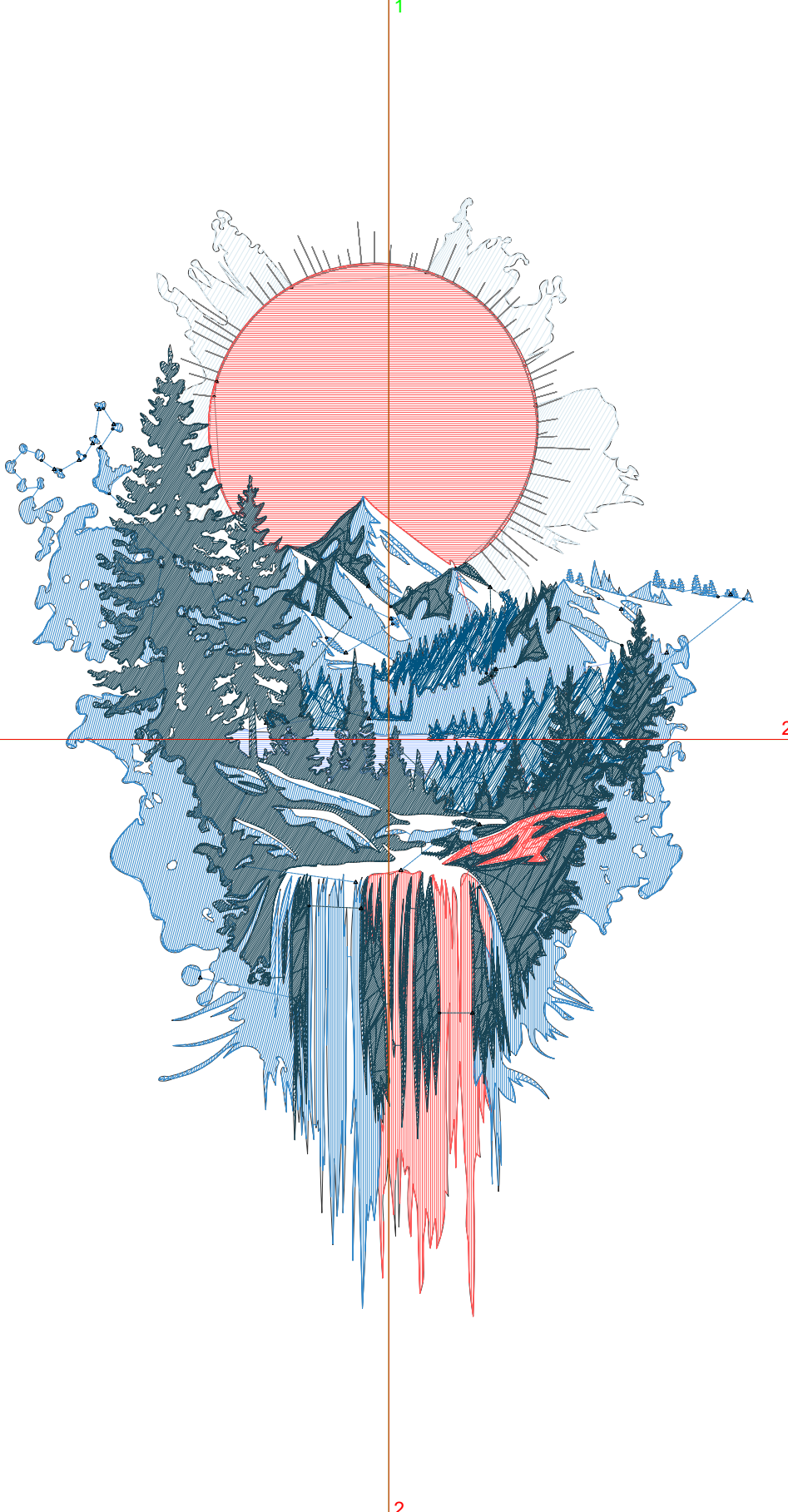
Wilcom EmbroideryStudio - Designing



Design: **7**

Title:

Stitches: 33,217
 Height: 7.00 in
 Width: 4.68 in
 Colors: 7
 Colorway: Colorway 1
 Zoom: 1:1



Machine format: Tajima
 Color changes: 6
 Stops: 7
 Trims: 43
 Appliqués: 0
 Left: 60.9 mm
 Right: 57.8 mm
 Up: 86.1 mm
 Down: 91.7 mm
 EndX: 0.00 in
 EndY: 0.00 in
 Area: 32.73 in²
 Max stitch: 12.0 mm
 Min stitch: 0.0 mm
 Max jump: 6.8 mm
 Total thread: 454.03ft
 Total bobbin: 138.54ft

Stop Sequence:

#	N#	Color	St.	Code	Name	Chart
1.	1		1,128		R220 G235 B242	
2.	7		1,299	7	Green	Default
3.	3		3,444	3	Red	Default
4.	6		7,940		R54 G139 B204	
5.	10		629	10	Dark Blue	Default
6.	2		3,106	2	Blue	Default
7.	4		15,669		R25 G68 B84	

Production Worksheet

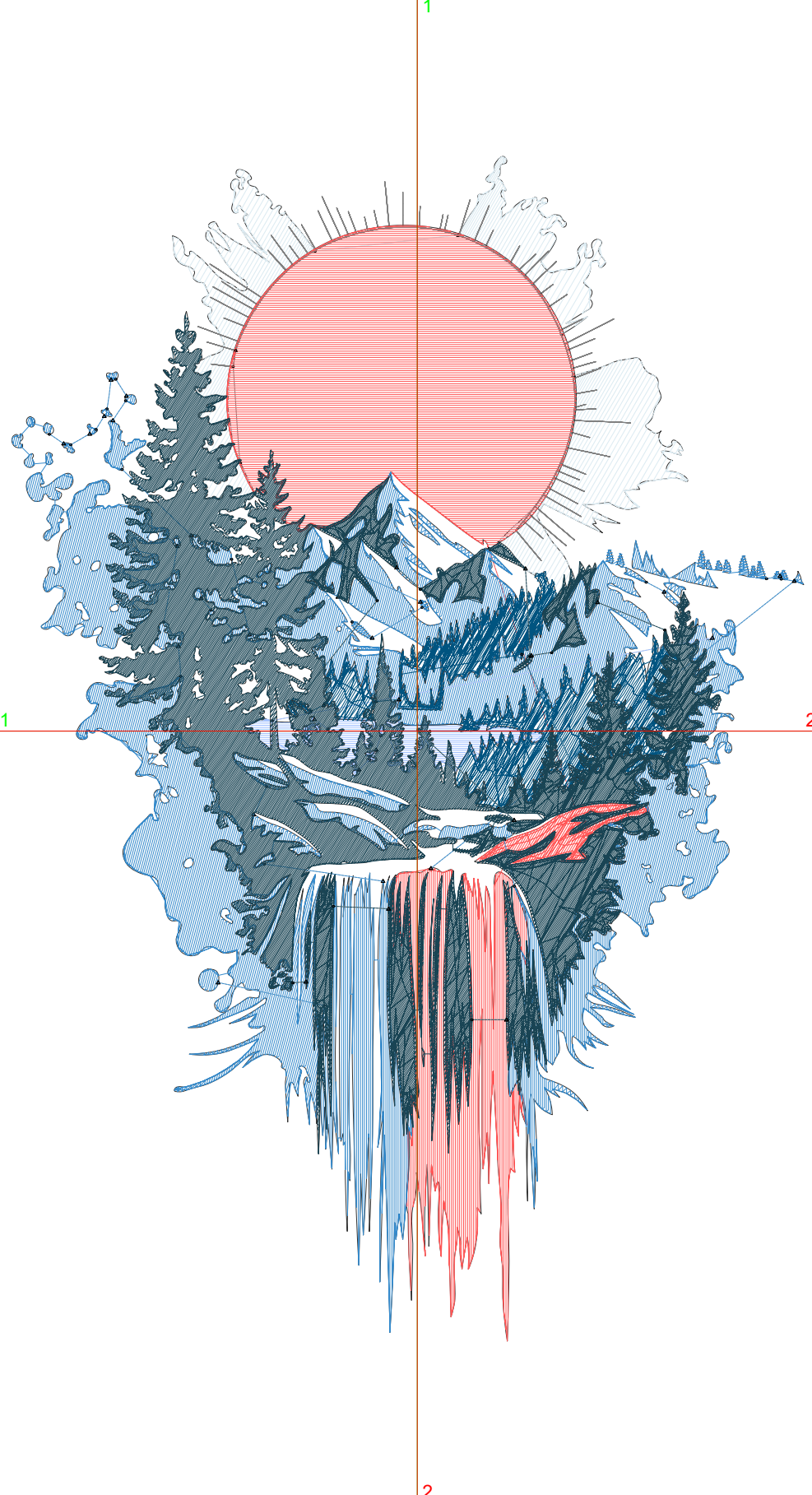
Wilcom EmbroideryStudio - Designing



Design: **7**

Title:

Stitches: 36,152
 Height: 7.50 in
 Width: 5.01 in
 Colors: 7
 Colorway: Colorway 1
 Zoom: 1:1



Machine format: Tajima
 Color changes: 6
 Stops: 7
 Trims: 46
 Appliqués: 0
 Left: 65.2 mm
 Right: 62.0 mm
 Up: 92.3 mm
 Down: 98.1 mm
 EndX: 0.00 in
 EndY: 0.00 in
 Area: 37.54 in²
 Max stitch: 11.2 mm
 Min stitch: 0.0 mm
 Max jump: 6.9 mm
 Total thread: 501.67ft
 Total bobbin: 155.35ft

Stop Sequence:

#	N#	Color	St.	Code	Name	Chart
1.	1		1,231		R220 G235 B242	
2.	7		1,359	7	Green	Default
3.	3		3,812	3	Red	Default
4.	6		8,640		R54 G139 B204	
5.	10		733	10	Dark Blue	Default
6.	2		3,344	2	Blue	Default
7.	4		17,031		R25 G68 B84	