

# Production Worksheet

Wilcom EmbroideryStudio - Designing



Design: **3**

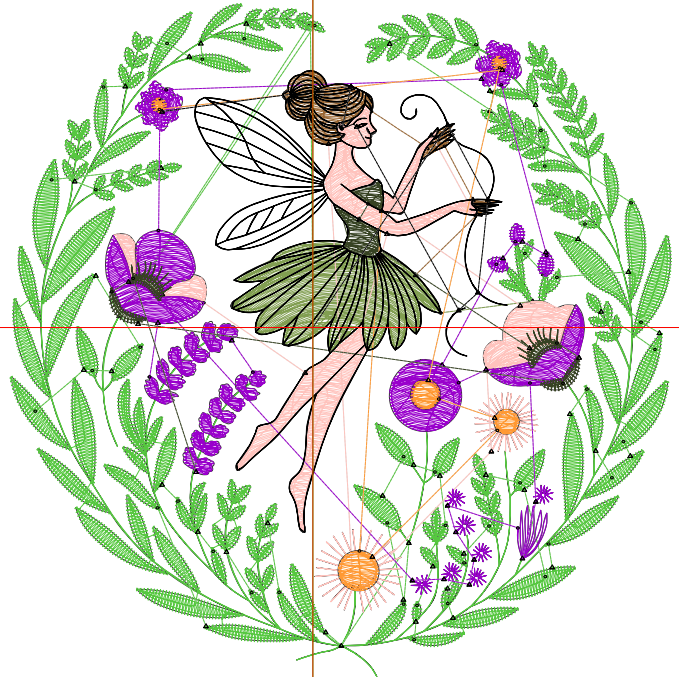
Title:

Stitches: 17,107  
 Height: 3.51 in  
 Width: 3.45 in  
 Colors: 8  
 Colorway: Colorway 1  
 Zoom: 1:1

Machine format: Tajima  
 Color changes: 7  
 Stops: 8  
 Trims: 92  
 Appliqués: 0  
 Left: 40.1 mm  
 Right: 47.4 mm  
 Up: 42.9 mm  
 Down: 46.2 mm  
 EndX: 0.00 in  
 EndY: 0.00 in  
 Area 12.08 in<sup>2</sup>  
 Max stitch: 8.7 mm  
 Min stitch: 0.0 mm  
 Max jump: 7.0 mm  
 Total thread: 213.16ft  
 Total bobbin: 58.24ft

Stop Sequence:

#	N#	Color	St.	Code	Name	Chart
1.	5		7,967		R86 G199 B64	
2.	1		960		R129 G158 B81	
3.	14		467	14	Brown	Default
4.	3		2,127		R255 G195 B189	
5.	13		3,029	13	Purple	Default
6.	4		574		R54 G66 B34	
7.	12		385	12	Orange	Default
8.	8		1,596	8	Black	Default



# Production Worksheet

Wilcom EmbroideryStudio - Designing



Design: **4**

Title:

Stitches: 19,589  
 Height: 4.01 in  
 Width: 3.94 in  
 Colors: 8  
 Colorway: Colorway 1  
 Zoom: 1:1

Machine format: Tajima  
 Color changes: 7  
 Stops: 8  
 Trims: 96  
 Appliqués: 0  
 Left: 46.3 mm  
 Right: 53.7 mm  
 Up: 49.2 mm  
 Down: 52.5 mm  
 EndX: 0.00 in  
 EndY: 0.00 in  
 Area: 15.77 in<sup>2</sup>  
 Max stitch: 9.9 mm  
 Min stitch: 0.0 mm  
 Max jump: 7.0 mm  
 Total thread: 252.05ft  
 Total bobbin: 71.63ft

Stop Sequence:

#	N#	Color	St.	Code	Name	Chart
1.	5		9,001		R86 G199 B64	
2.	1		1,179		R129 G158 B81	
3.	14		585	14	Brown	Default
4.	3		2,484		R255 G195 B189	
5.	13		3,493	13	Purple	Default
6.	4		652		R54 G66 B34	
7.	12		428	12	Orange	Default
8.	8		1,765	8	Black	Default



# Production Worksheet

Wilcom EmbroideryStudio - Designing



Design: **4**

Title:

Stitches: 22,087  
 Height: 4.51 in  
 Width: 4.43 in  
 Colors: 8  
 Colorway: Colorway 1  
 Zoom: 1:1

Machine format: Tajima  
 Color changes: 7  
 Stops: 8  
 Trims: 100  
 Appliqués: 0  
 Left: 52.6 mm  
 Right: 59.9 mm  
 Up: 55.6 mm  
 Down: 58.9 mm  
 EndX: 0.00 in  
 EndY: 0.00 in  
 Area: 19.95 in<sup>2</sup>  
 Max stitch: 10.2 mm  
 Min stitch: 0.0 mm  
 Max jump: 7.0 mm  
 Total thread: 293.17ft  
 Total bobbin: 86.29ft

Stop Sequence:

#	N#	Color	St.	Code	Name	Chart
1.	5		10,019		R86 G199 B64	
2.	1		1,389		R129 G158 B81	
3.	14		676	14	Brown	Default
4.	3		2,864		R255 G195 B189	
5.	13		4,023	13	Purple	Default
6.	4		730		R54 G66 B34	
7.	12		486	12	Orange	Default
8.	8		1,898	8	Black	Default



# Production Worksheet

Wilcom EmbroideryStudio - Designing



Design: **5**

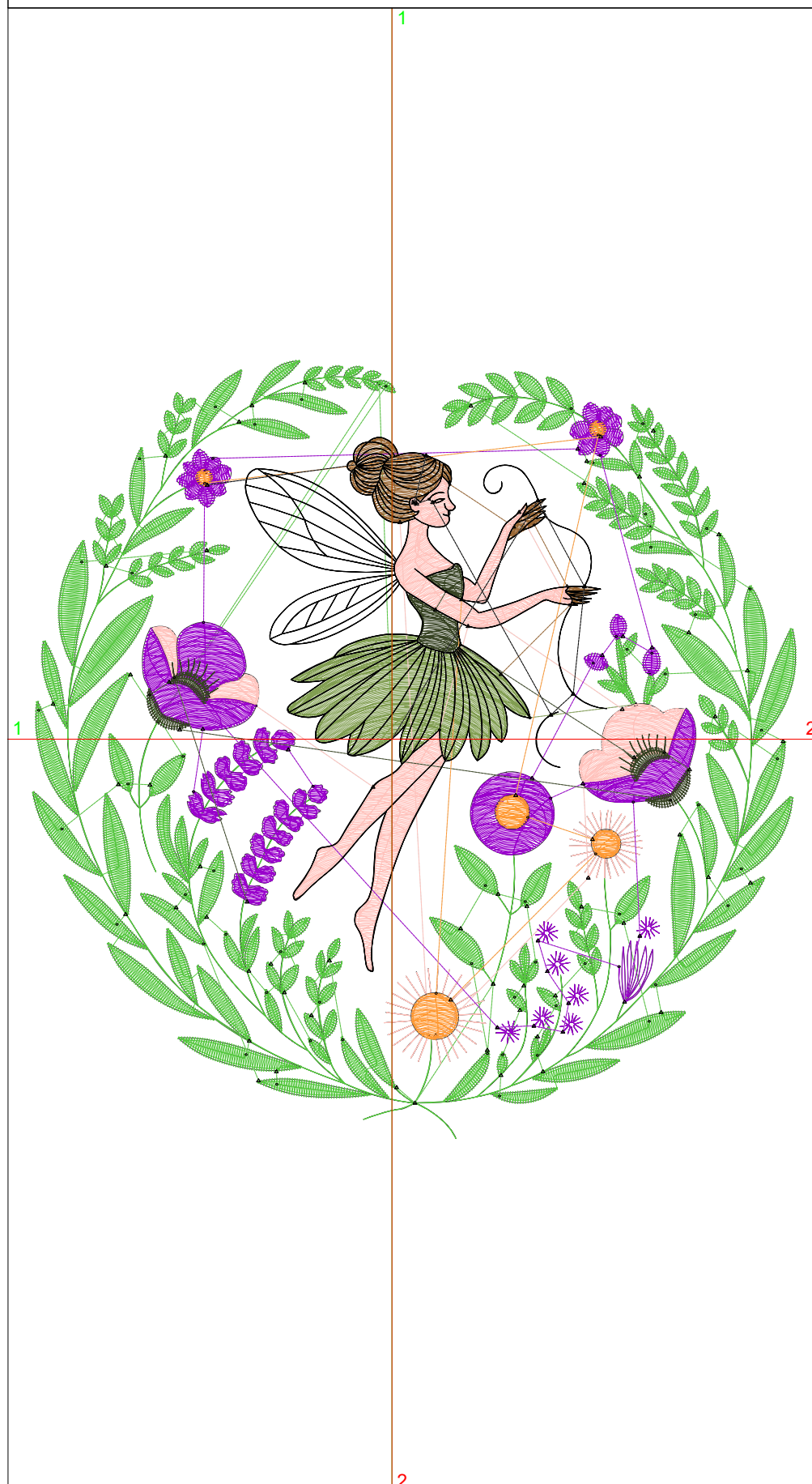
Title:

Stitches: 24,548  
 Height: 5.01 in  
 Width: 4.92 in  
 Colors: 8  
 Colorway: Colorway 1  
 Zoom: 1:1

Machine format: Tajima  
 Color changes: 7  
 Stops: 8  
 Trims: 104  
 Appliqués: 0  
 Left: 58.8 mm  
 Right: 66.1 mm  
 Up: 61.9 mm  
 Down: 65.2 mm  
 EndX: 0.00 in  
 EndY: 0.00 in  
 Area: 24.62 in<sup>2</sup>  
 Max stitch: 11.3 mm  
 Min stitch: 0.0 mm  
 Max jump: 7.0 mm  
 Total thread: 336.12ft  
 Total bobbin: 102.17ft

Stop Sequence:

#	N#	Color	St.	Code	Name	Chart
1.	5		10,941		R86 G199 B64	
2.	1		1,631		R129 G158 B81	
3.	14		795	14	Brown	Default
4.	3		3,264		R255 G195 B189	
5.	13		4,513	13	Purple	Default
6.	4		808		R54 G66 B34	
7.	12		553	12	Orange	Default
8.	8		2,041	8	Black	Default



# Production Worksheet

Wilcom EmbroideryStudio - Designing



Design: **5**

Title:

Stitches: 27,174  
Height: 5.51 in  
Width: 5.41 in  
Colors: 8  
Colorway: Colorway 1  
Zoom: 1:1



# Production Worksheet

Wilcom EmbroideryStudio - Designing



Design: **5**

Title:

Stitches: 27,174  
 Height: 5.51 in  
 Width: 5.41 in  
 Colors: 8  
 Colorway: Colorway 1  
 Zoom: 1:1

Machine format: Tajima  
 Color changes: 7  
 Stops: 8  
 Trims: 112  
 Appliqués: 0  
 Left: 65.0 mm  
 Right: 72.4 mm  
 Up: 68.3 mm  
 Down: 71.6 mm  
 EndX: 0.00 in  
 EndY: 0.00 in  
 Area 29.78 in<sup>2</sup>  
 Max stitch: 6.9 mm  
 Min stitch: 0.0 mm  
 Max jump: 6.9 mm  
 Total thread: 382.12ft  
 Total bobbin: 119.22ft

Stop Sequence:

#	N#	Color	St.	Code	Name	Chart
1.	5		11,937		R86 G199 B64	
2.	1		1,878		R129 G158 B81	
3.	14		908	14	Brown	Default
4.	3		3,749		R255 G195 B189	
5.	13		4,996	13	Purple	Default
6.	4		896		R54 G66 B34	
7.	12		607	12	Orange	Default
8.	8		2,201	8	Black	Default

# Production Worksheet

Wilcom EmbroideryStudio - Designing



Design: **6**

Title:

Stitches: 29,997  
Height: 6.01 in  
Width: 5.90 in  
Colors: 8  
Colorway: Colorway 1  
Zoom: 1:1



# Production Worksheet

Wilcom EmbroideryStudio - Designing



Design: **6**

Title:

Stitches: 29,997  
 Height: 6.01 in  
 Width: 5.90 in  
 Colors: 8  
 Colorway: Colorway 1  
 Zoom: 1:1

Machine format: Tajima  
 Color changes: 7  
 Stops: 8  
 Trims: 121  
 Appliqués: 0  
 Left: 71.3 mm  
 Right: 78.6 mm  
 Up: 74.6 mm  
 Down: 77.9 mm  
 EndX: 0.00 in  
 EndY: 0.00 in  
 Area 35.43 in<sup>2</sup>  
 Max stitch: 6.9 mm  
 Min stitch: 0.0 mm  
 Max jump: 6.9 mm  
 Total thread: 433.18ft  
 Total bobbin: 138.50ft

Stop Sequence:

#	N#	Color	St.	Code	Name	Chart
1.	5		12,976		R86 G199 B64	
2.	1		2,180		R129 G158 B81	
3.	14		1,052	14	Brown	Default
4.	3		4,212		R255 G195 B189	
5.	13		5,591	13	Purple	Default
6.	4		971		R54 G66 B34	
7.	12		671	12	Orange	Default
8.	8		2,342	8	Black	Default

# Production Worksheet

Wilcom EmbroideryStudio - Designing



Design: **6**

Title:

Stitches: 32,720  
Height: 6.51 in  
Width: 6.39 in  
Colors: 8  
Colorway: Colorway 1  
Zoom: 1:1



# Production Worksheet

Wilcom EmbroideryStudio - Designing



Design: **6**

Title:

Stitches: 32,720  
 Height: 6.51 in  
 Width: 6.39 in  
 Colors: 8  
 Colorway: Colorway 1  
 Zoom: 1:1

Machine format: Tajima  
 Color changes: 7  
 Stops: 8  
 Trims: 128  
 Appliqués: 0  
 Left: 77.5 mm  
 Right: 84.8 mm  
 Up: 81.0 mm  
 Down: 84.3 mm  
 EndX: 0.00 in  
 EndY: 0.00 in  
 Area 41.57 in<sup>2</sup>  
 Max stitch: 7.0 mm  
 Min stitch: 0.0 mm  
 Max jump: 7.0 mm  
 Total thread: 484.43ft  
 Total bobbin: 158.28ft

Stop Sequence:

#	N#	Color	St.	Code	Name	Chart
1.	5		13,952		R86 G199 B64	
2.	1		2,470		R129 G158 B81	
3.	14		1,181	14	Brown	Default
4.	3		4,673		R255 G195 B189	
5.	13		6,159	13	Purple	Default
6.	4		1,078		R54 G66 B34	
7.	12		737	12	Orange	Default
8.	8		2,468	8	Black	Default

# Production Worksheet

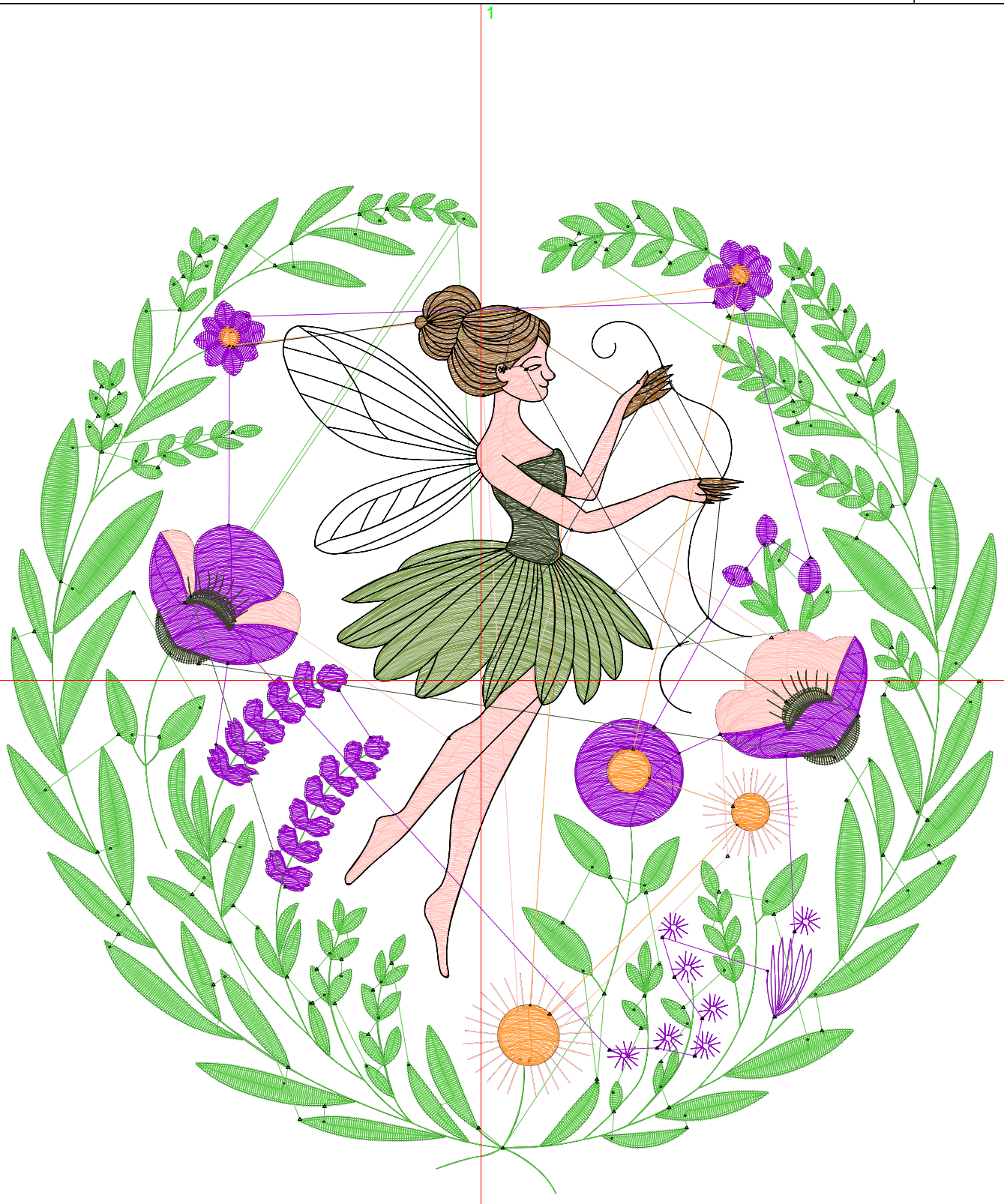
Wilcom EmbroideryStudio - Designing



Design: **7**

Title:

Stitches: 35,624  
Height: 7.01 in  
Width: 6.88 in  
Colors: 8  
Colorway: Colorway 1  
Zoom: 1:1



# Production Worksheet

Wilcom EmbroideryStudio - Designing



Design: **7**

Title:

Stitches: 35,624  
 Height: 7.01 in  
 Width: 6.88 in  
 Colors: 8  
 Colorway: Colorway 1  
 Zoom: 1:1

Machine format: Tajima  
 Color changes: 7  
 Stops: 8  
 Trims: 134  
 Appliqués: 0  
 Left: 83.7 mm  
 Right: 91.0 mm  
 Up: 87.3 mm  
 Down: 90.6 mm  
 EndX: 0.00 in  
 EndY: 0.00 in  
 Area 48.20 in<sup>2</sup>  
 Max stitch: 7.1 mm  
 Min stitch: 0.0 mm  
 Max jump: 7.0 mm  
 Total thread: 540.15ft  
 Total bobbin: 180.02ft

Stop Sequence:

#	N#	Color	St.	Code	Name	Chart
1.	5		14,961		R86 G199 B64	
2.	1		2,829		R129 G158 B81	
3.	14		1,277	14	Brown	Default
4.	3		5,222		R255 G195 B189	
5.	13		6,750	13	Purple	Default
6.	4		1,159		R54 G66 B34	
7.	12		820	12	Orange	Default
8.	8		2,604	8	Black	Default

# Production Worksheet

Wilcom EmbroideryStudio - Designing



Design: **7**

Title:

Stitches: 38,667  
Height: 7.51 in  
Width: 7.37 in  
Colors: 8  
Colorway: Colorway 1  
Zoom: 1:1



# Production Worksheet

Wilcom EmbroideryStudio - Designing



Design: **7**

Title:

Stitches: 38,667  
 Height: 7.51 in  
 Width: 7.37 in  
 Colors: 8  
 Colorway: Colorway 1  
 Zoom: 1:1

Machine format: Tajima  
 Color changes: 7  
 Stops: 8  
 Trims: 141  
 Appliqués: 0  
 Left: 89.9 mm  
 Right: 97.3 mm  
 Up: 93.7 mm  
 Down: 97.0 mm  
 EndX: 0.00 in  
 EndY: 0.00 in  
 Area 55.33 in<sup>2</sup>  
 Max stitch: 7.7 mm  
 Min stitch: 0.0 mm  
 Max jump: 7.0 mm  
 Total thread: 599.16ft  
 Total bobbin: 203.15ft

Stop Sequence:

#	N#	Color	St.	Code	Name	Chart
1.	5		16,020		R86 G199 B64	
2.	1		3,178		R129 G158 B81	
3.	14		1,412	14	Brown	Default
4.	3		5,790		R255 G195 B189	
5.	13		7,399	13	Purple	Default
6.	4		1,246		R54 G66 B34	
7.	12		903	12	Orange	Default
8.	8		2,717	8	Black	Default