

Production Worksheet

Wilcom EmbroideryStudio - Designing



Design: **3**

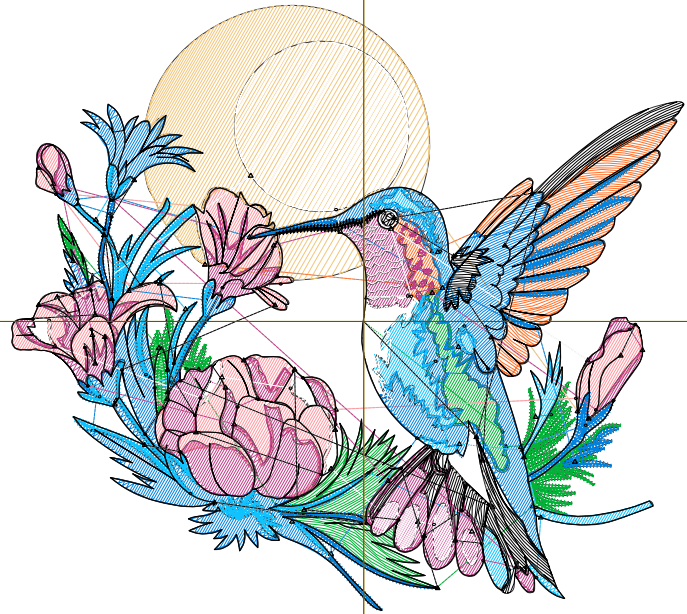
Title:

Stitches: 16,624
 Height: 3.15 in
 Width: 3.50 in
 Colors: 9
 Colorway: Colorway 1
 Zoom: 1:1

Machine format: Tajima
 Color changes: 8
 Stops: 9
 Trims: 100
 Appliqués: 0
 Left: 46.5 mm
 Right: 42.3 mm
 Up: 41.8 mm
 Down: 38.3 mm
 EndX: 0.00 in
 EndY: 0.00 in
 Area 11.03 in²
 Max stitch: 6.9 mm
 Min stitch: 0.0 mm
 Max jump: 6.9 mm
 Total thread: 209.71ft
 Total bobbin: 57.88ft

Stop Sequence:

#	N#	Color	St.	Code	Name	Chart
1.	7		1,850	R0	G179 B54	
2.	15		1,364	R255	G153 B161	
3.	4		881	R242	G198 B123	
4.	12		722	R255	G113 B42	
5.	2		3,776	R0	G131 B224	
6.	5		2,326	R16	G195 B255	
7.	6		1,890	R192	G63 B136	
8.	9		1,031	R255	G255 B255	
9.	8		2,782	R0	G0 B0	



Production Worksheet

Wilcom EmbroideryStudio - Designing



Design: **4**

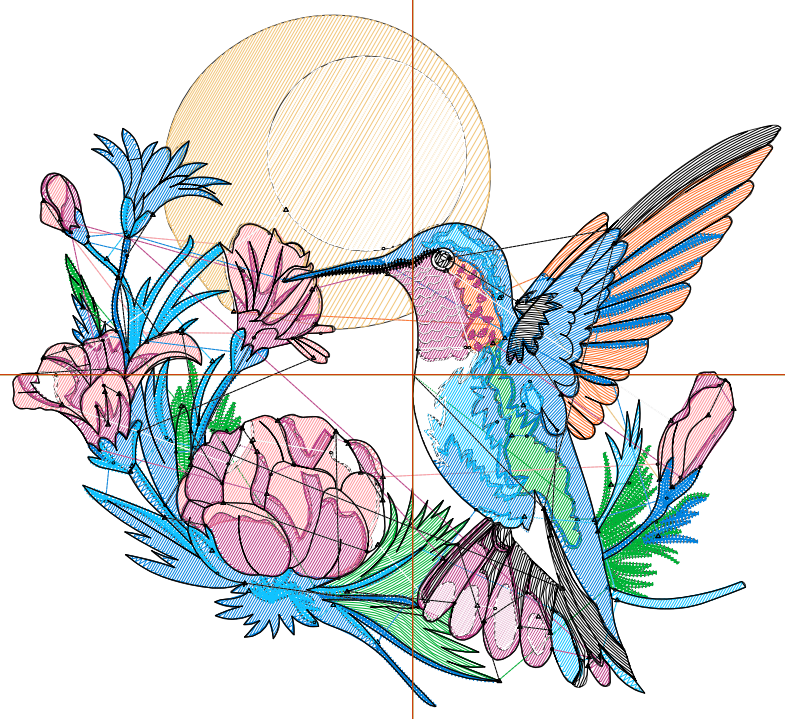
Title:

Stitches: 19,220
Height: 3.60 in
Width: 4.00 in
Colors: 9
Colorway: Colorway 1
Zoom: 1:1

Machine format: Tajima
Color changes: 8
Stops: 9
Trims: 110
Appliqués: 0
Left: 52.9 mm
Right: 48.7 mm
Up: 47.6 mm
Down: 43.9 mm
EndX: 0.00 in
EndY: 0.00 in
Area 14.40 in²
Max stitch: 6.8 mm
Min stitch: 0.0 mm
Max jump: 6.8 mm
Total thread: 250.32ft
Total bobbin: 71.86ft

Stop Sequence:

#	N#	Color	St.	Code	Name	Chart
1.	7		2,146		R0 G179 B54	
2.	15		1,614		R255 G153 B161	
3.	4		1,082		R242 G198 B123	
4.	12		758		R255 G113 B42	
5.	2		4,434		R0 G131 B224	
6.	5		2,643		R16 G195 B255	
7.	6		2,233		R192 G63 B136	
8.	9		1,232		R255 G255 B255	
9.	8		3,076		R0 G0 B0	



Production Worksheet

Wilcom EmbroideryStudio - Designing



Design: **4**

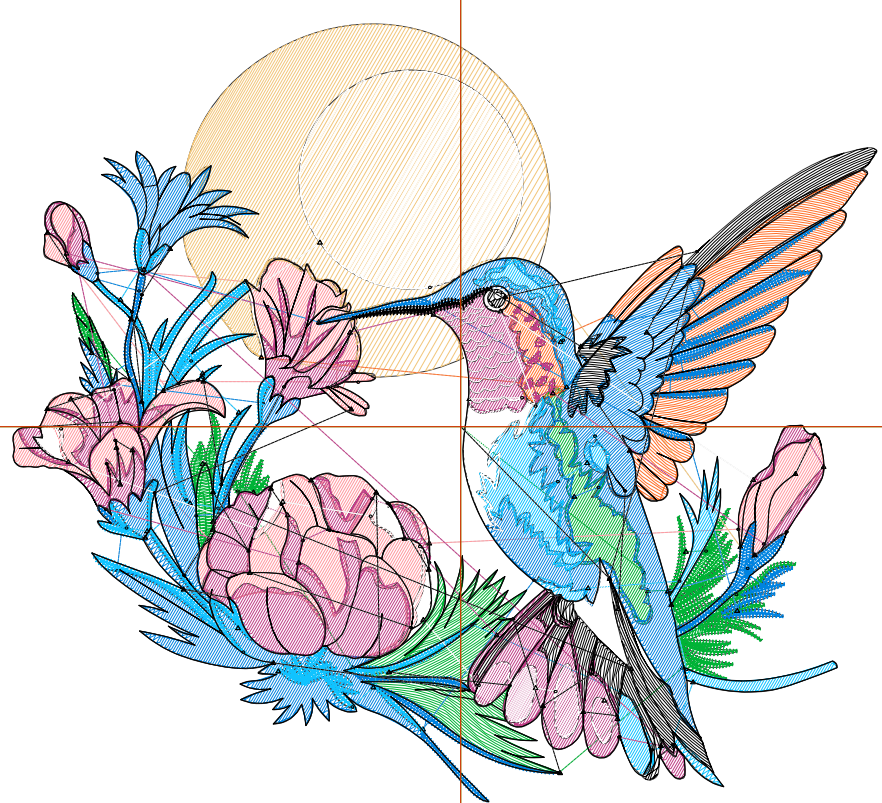
Title:

Stitches: 22,029
 Height: 4.05 in
 Width: 4.50 in
 Colors: 9
 Colorway: Colorway 1
 Zoom: 1:1

Machine format: Tajima
 Color changes: 8
 Stops: 9
 Trims: 111
 Appliqués: 0
 Left: 59.2 mm
 Right: 55.0 mm
 Up: 53.3 mm
 Down: 49.7 mm
 EndX: 0.00 in
 EndY: 0.00 in
 Area 18.23 in²
 Max stitch: 7.0 mm
 Min stitch: 0.0 mm
 Max jump: 7.0 mm
 Total thread: 294.41ft
 Total bobbin: 87.06ft

Stop Sequence:

#	N#	Color	St.	Code	Name	Chart
1.	7		2,381	R0	G179 B54	
2.	15		1,907	R255	G153 B161	
3.	4		1,312	R242	G198 B123	
4.	12		1,038	R255	G113 B42	
5.	2		5,053	R0	G131 B224	
6.	5		2,941	R16	G195 B255	
7.	6		2,586	R192	G63 B136	
8.	9		1,428	R255	G255 B255	
9.	8		3,381	R0	G0 B0	



Production Worksheet

Wilcom EmbroideryStudio - Designing



Design: **5**

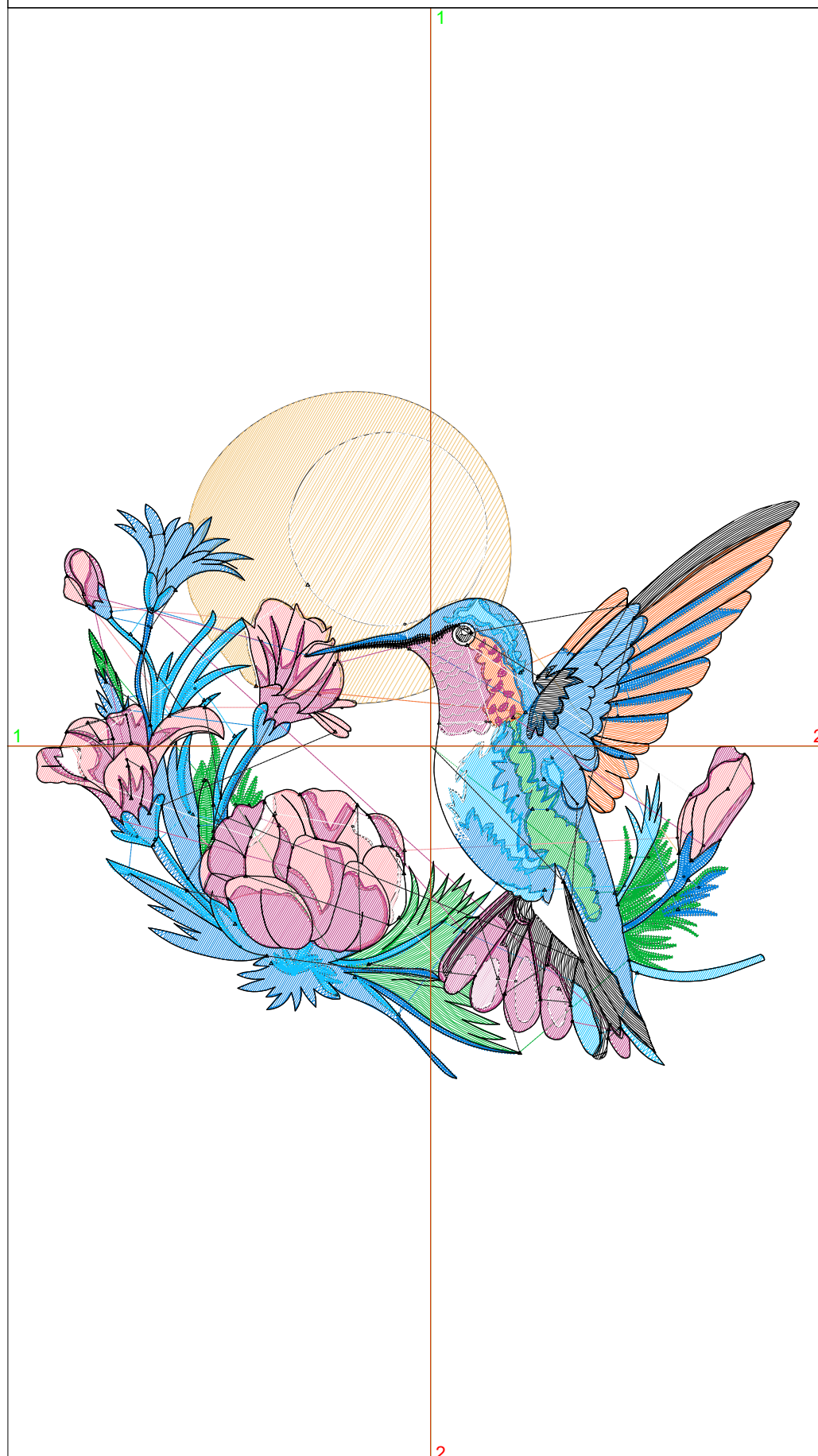
Title:

Stitches: 24,834
 Height: 4.50 in
 Width: 5.00 in
 Colors: 9
 Colorway: Colorway 1
 Zoom: 1:1

Machine format: Tajima
 Color changes: 8
 Stops: 9
 Trims: 116
 Appliqués: 0
 Left: 65.6 mm
 Right: 61.4 mm
 Up: 59.0 mm
 Down: 55.4 mm
 EndX: 0.00 in
 EndY: 0.00 in
 Area: 22.50 in²
 Max stitch: 7.0 mm
 Min stitch: 0.0 mm
 Max jump: 7.0 mm
 Total thread: 341.42ft
 Total bobbin: 104.01ft

Stop Sequence:

#	N#	Color	St.	Code	Name	Chart
1.	7		2,674	R0	G179 B54	
2.	15		2,185	R255	G153 B161	
3.	4		1,562	R242	G198 B123	
4.	12		1,035	R255	G113 B42	
5.	2		5,698	R0	G131 B224	
6.	5		3,293	R16	G195 B255	
7.	6		2,957	R192	G63 B136	
8.	9		1,694	R255	G255 B255	
9.	8		3,734	R0	G0 B0	



Production Worksheet

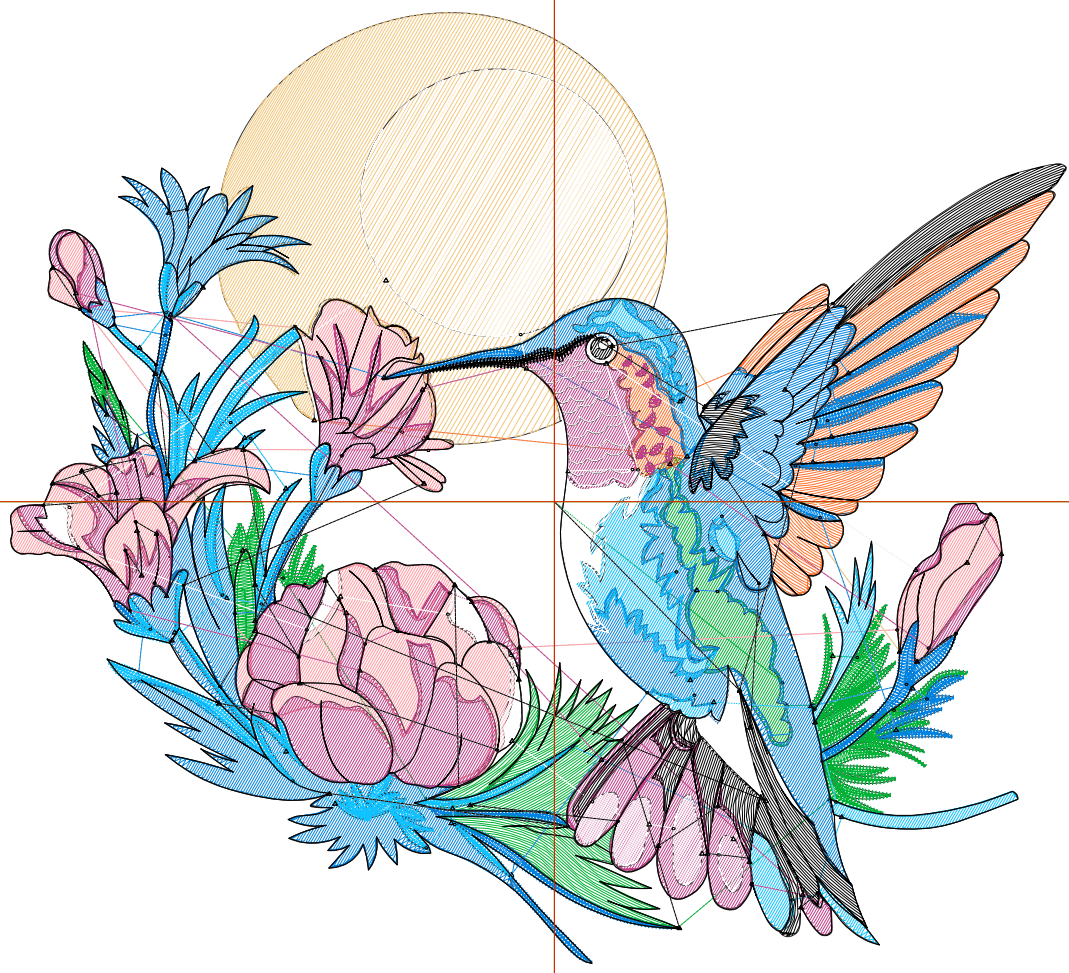
Wilcom EmbroideryStudio - Designing



Design: **5**

Title:

Stitches: 27,925
Height: 4.95 in
Width: 5.50 in
Colors: 9
Colorway: Colorway 1
Zoom: 1:1



Production Worksheet

Wilcom EmbroideryStudio - Designing



Design: **5**

Title:

Stitches: 27,925
 Height: 4.95 in
 Width: 5.50 in
 Colors: 9
 Colorway: Colorway 1
 Zoom: 1:1

Machine format: Tajima
 Color changes: 8
 Stops: 9
 Trims: 122
 Appliqués: 0
 Left: 71.9 mm
 Right: 67.7 mm
 Up: 64.7 mm
 Down: 61.1 mm
 EndX: 0.00 in
 EndY: 0.00 in
 Area 27.22 in²
 Max stitch: 7.6 mm
 Min stitch: 0.0 mm
 Max jump: 7.0 mm
 Total thread: 392.24ft
 Total bobbin: 122.11ft

Stop Sequence:

#	N#	Color	St.	Code	Name	Chart
1.	7		2,971		R0 G179 B54	
2.	15		2,510		R255 G153 B161	
3.	4		1,826		R242 G198 B123	
4.	12		1,209		R255 G113 B42	
5.	2		6,458		R0 G131 B224	
6.	5		3,640		R16 G195 B255	
7.	6		3,383		R192 G63 B136	
8.	9		1,907		R255 G255 B255	
9.	8		4,019		R0 G0 B0	

Production Worksheet

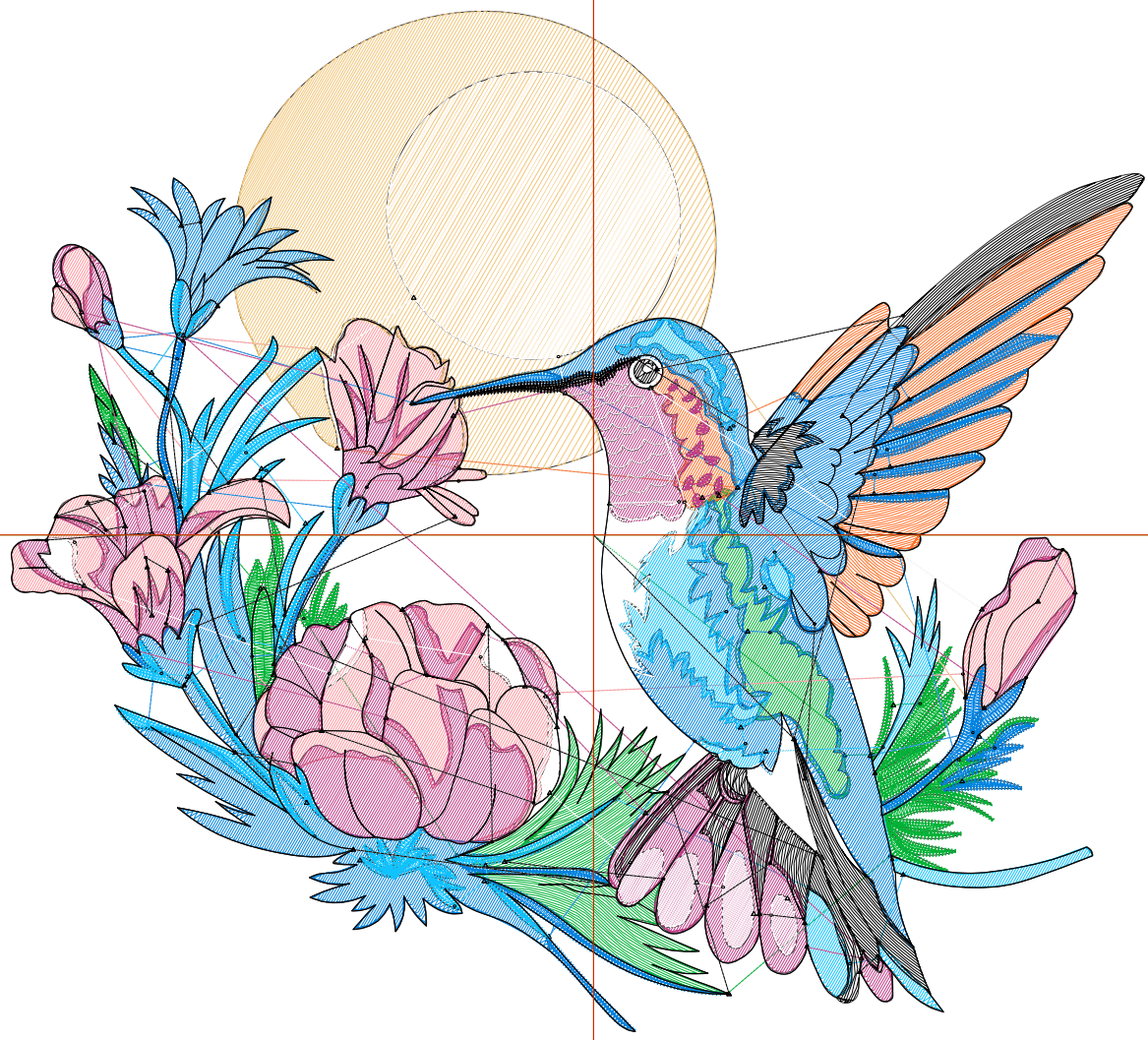
Wilcom EmbroideryStudio - Designing



Design: **6**

Title:

Stitches: 30,933
Height: 5.40 in
Width: 6.00 in
Colors: 9
Colorway: Colorway 1
Zoom: 1:1



Production Worksheet

Wilcom EmbroideryStudio - Designing



Design: **6**

Title:

Stitches: 30,933
 Height: 5.40 in
 Width: 6.00 in
 Colors: 9
 Colorway: Colorway 1
 Zoom: 1:1

Machine format: Tajima
 Color changes: 8
 Stops: 9
 Trims: 123
 Appliqués: 0
 Left: 78.3 mm
 Right: 74.1 mm
 Up: 70.4 mm
 Down: 66.8 mm
 EndX: 0.00 in
 EndY: 0.00 in
 Area 32.40 in²
 Max stitch: 8.3 mm
 Min stitch: 0.0 mm
 Max jump: 6.9 mm
 Total thread: 444.49ft
 Total bobbin: 141.37ft

Stop Sequence:

#	N#	Color	St.	Code	Name	Chart
1.	7		3,277		R0 G179 B54	
2.	15		2,746		R255 G153 B161	
3.	4		2,109		R242 G198 B123	
4.	12		1,399		R255 G113 B42	
5.	2		7,178		R0 G131 B224	
6.	5		4,008		R16 G195 B255	
7.	6		3,750		R192 G63 B136	
8.	9		2,151		R255 G255 B255	
9.	8		4,313		R0 G0 B0	

Production Worksheet

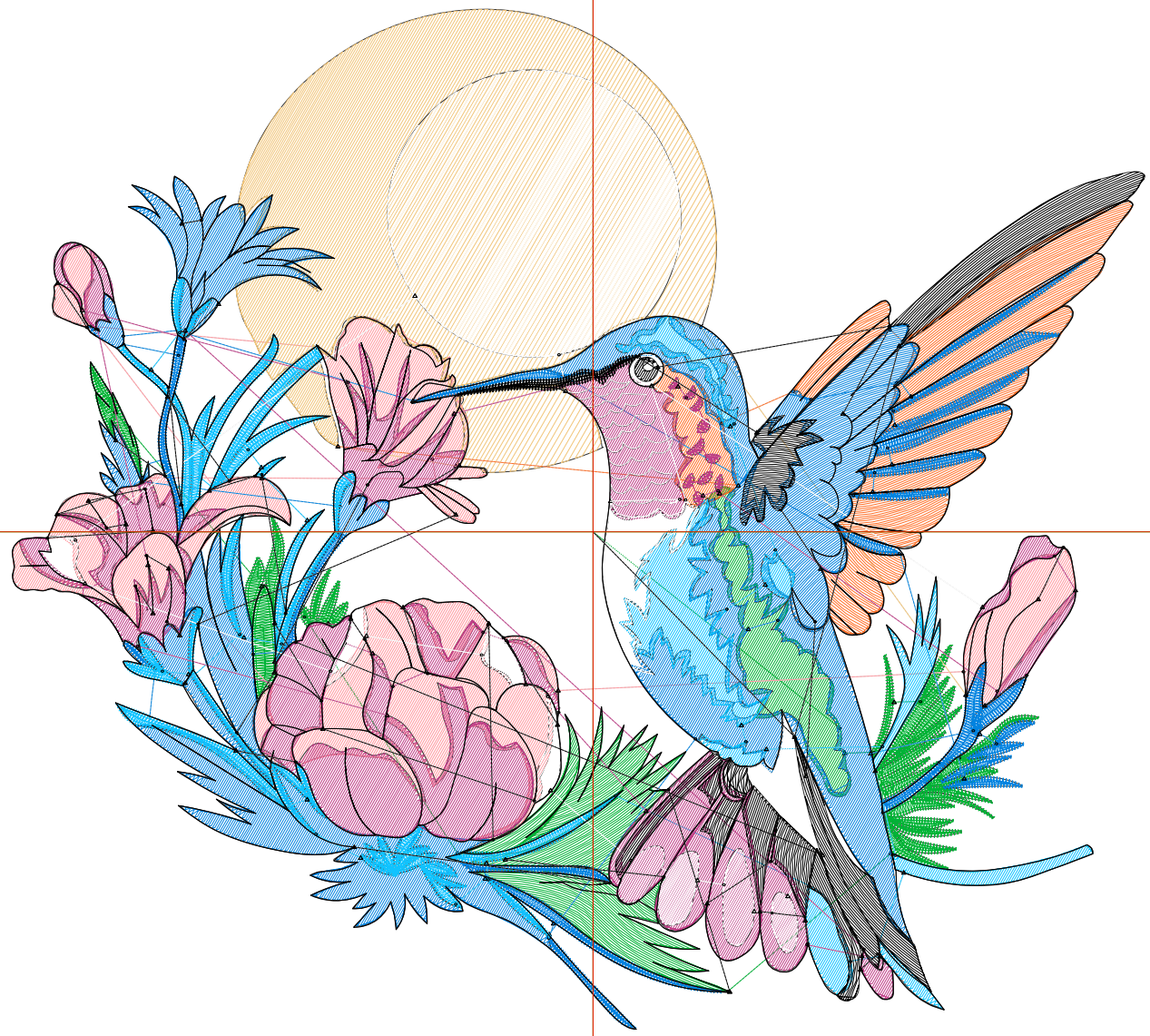
Wilcom EmbroideryStudio - Designing



Design: **6**

Title:

Stitches: 34,089
Height: 5.85 in
Width: 6.50 in
Colors: 9
Colorway: Colorway 1
Zoom: 1:1



Production Worksheet

Wilcom EmbroideryStudio - Designing



Design: **6**

Title:

Stitches: 34,089
 Height: 5.85 in
 Width: 6.50 in
 Colors: 9
 Colorway: Colorway 1
 Zoom: 1:1

Machine format: Tajima
 Color changes: 8
 Stops: 9
 Trims: 126
 Appliqués: 0
 Left: 84.6 mm
 Right: 80.4 mm
 Up: 76.1 mm
 Down: 72.5 mm
 EndX: 0.00 in
 EndY: 0.00 in
 Area 38.02 in²
 Max stitch: 9.0 mm
 Min stitch: 0.0 mm
 Max jump: 7.0 mm
 Total thread: 500.29ft
 Total bobbin: 162.16ft

Stop Sequence:

#	N#	Color	St.	Code	Name	Chart
1.	7		3,559		R0 G179 B54	
2.	15		3,130		R255 G153 B161	
3.	4		2,407		R242 G198 B123	
4.	12		1,569		R255 G113 B42	
5.	2		7,880		R0 G131 B224	
6.	5		4,310		R16 G195 B255	
7.	6		4,172		R192 G63 B136	
8.	9		2,417		R255 G255 B255	
9.	8		4,643		R0 G0 B0	

Production Worksheet

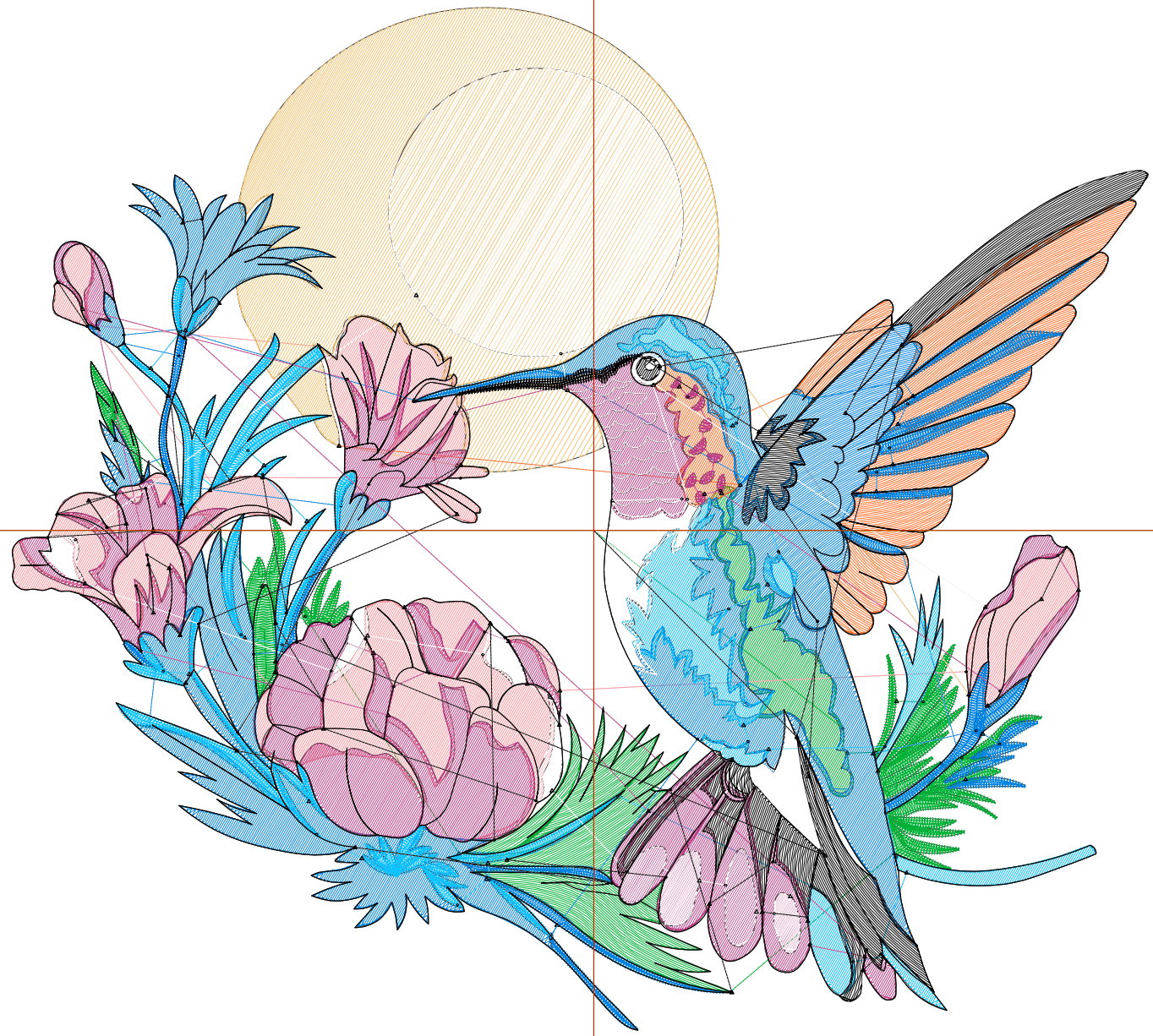
Wilcom EmbroideryStudio - Designing



Design: **7**

Title:

Stitches: 37,590
Height: 6.30 in
Width: 7.00 in
Colors: 9
Colorway: Colorway 1
Zoom: 1:1



Production Worksheet

Wilcom EmbroideryStudio - Designing



Design: **7**

Title:

Stitches: 37,590
 Height: 6.30 in
 Width: 7.00 in
 Colors: 9
 Colorway: Colorway 1
 Zoom: 1:1

Machine format: Tajima
 Color changes: 8
 Stops: 9
 Trims: 126
 Appliqués: 0
 Left: 91.0 mm
 Right: 86.7 mm
 Up: 81.9 mm
 Down: 78.2 mm
 EndX: 0.00 in
 EndY: 0.00 in
 Area 44.09 in²
 Max stitch: 9.7 mm
 Min stitch: 0.0 mm
 Max jump: 7.0 mm
 Total thread: 562.18ft
 Total bobbin: 185.23ft

Stop Sequence:

#	N#	Color	St.	Code	Name	Chart
1.	7		3,871		R0 G179 B54	
2.	15		3,480		R255 G153 B161	
3.	4		2,736		R242 G198 B123	
4.	12		1,747		R255 G113 B42	
5.	2		8,714		R0 G131 B224	
6.	5		4,668		R16 G195 B255	
7.	6		4,683		R192 G63 B136	
8.	9		2,706		R255 G255 B255	
9.	8		4,983		R0 G0 B0	

Production Worksheet

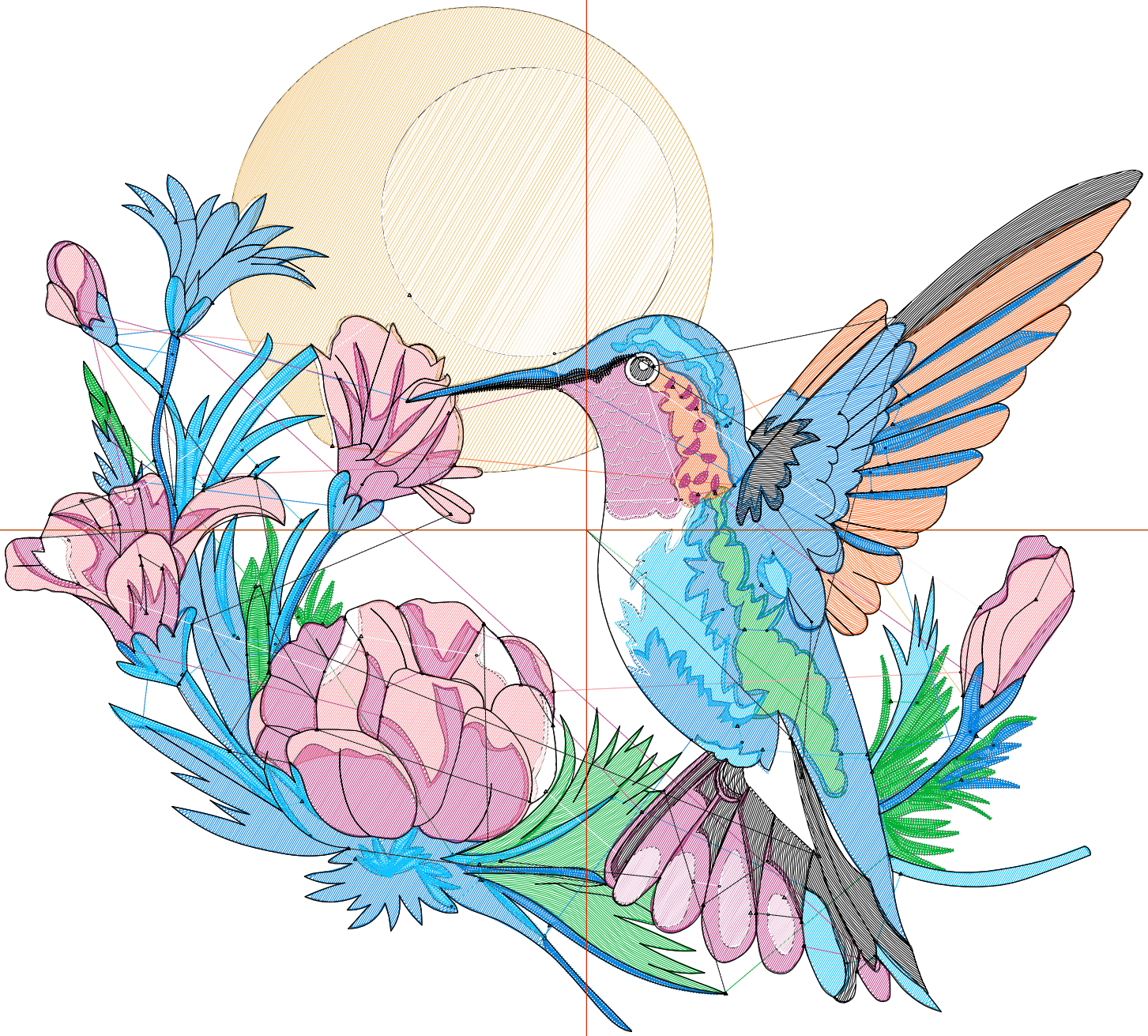
Wilcom EmbroideryStudio - Designing



Design: **7**

Title:

Stitches: 40,979
Height: 6.75 in
Width: 7.50 in
Colors: 9
Colorway: Colorway 1
Zoom: 1:1



Production Worksheet

Wilcom EmbroideryStudio - Designing



Design: **7**

Title:

Stitches: 40,979
 Height: 6.75 in
 Width: 7.50 in
 Colors: 9
 Colorway: Colorway 1
 Zoom: 1:1

Machine format: Tajima
 Color changes: 8
 Stops: 9
 Trims: 129
 Appliqués: 0
 Left: 97.3 mm
 Right: 93.1 mm
 Up: 87.6 mm
 Down: 83.9 mm
 EndX: 0.00 in
 EndY: 0.00 in
 Area 50.62 in²
 Max stitch: 10.4 mm
 Min stitch: 0.0 mm
 Max jump: 7.0 mm
 Total thread: 624.18ft
 Total bobbin: 208.79ft

Stop Sequence:

#	N#	Color	St.	Code	Name	Chart
1.	7		4,225		R0 G179 B54	
2.	15		3,742		R255 G153 B161	
3.	4		3,088		R242 G198 B123	
4.	12		1,970		R255 G113 B42	
5.	2		9,466		R0 G131 B224	
6.	5		5,052		R16 G195 B255	
7.	6		5,146		R192 G63 B136	
8.	9		2,993		R255 G255 B255	
9.	8		5,295		R0 G0 B0	