

Production Worksheet

Wilcom EmbroideryStudio - Designing



Design: **3.50 inch**

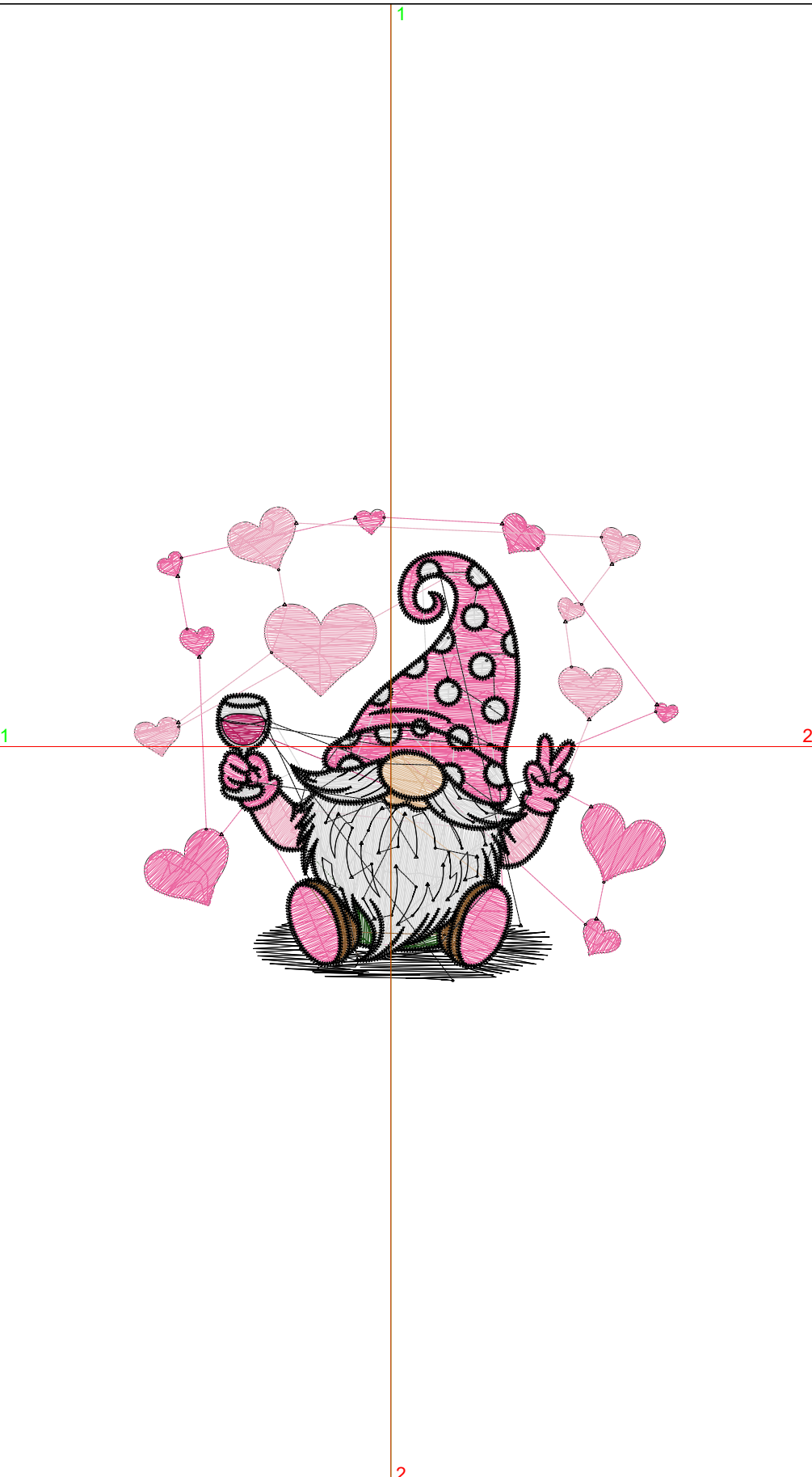
Title:

Stitches: 17,556
 Height: 3.05 in
 Width: 3.51 in
 Colors: 8
 Colorway: Colorway 1
 Zoom: 1:1

Machine format: Tajima
 Color changes: 7
 Stops: 8
 Trims: 108
 Appliqués: 0
 Left: 42.1 mm
 Right: 47.1 mm
 Up: 39.2 mm
 Down: 38.2 mm
 EndX: 0.00 in
 EndY: 0.00 in
 Area 10.71 in²
 Max stitch: 9.8 mm
 Min stitch: 0.2 mm
 Max jump: 6.9 mm
 Total thread: 237.65ft
 Total bobbin: 71.01ft

Stop Sequence:

#	N#	Color	St.	Code	Name	Chart
1.	1		4,237	R235	G104 B161	
2.	2		1,651	R235	G168 B190	
3.	4		128	R29	G77 B21	
4.	5		2,998	R214	G214 B214	
5.	3		614	R133	G88 B44	
6.	6		257	R219	G183 B145	
7.	9		117	R184	G34 B97	
8.	8		7,552	8	Black	Default



Production Worksheet

Wilcom EmbroideryStudio - Designing



Design: **4.50 inch**

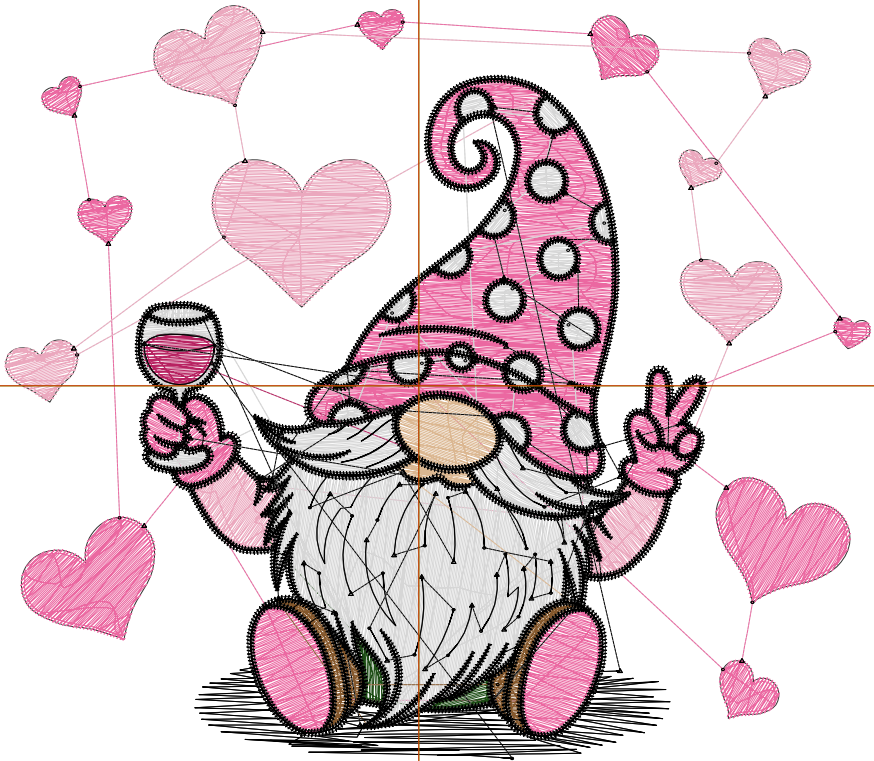
Title:

Stitches: 23,008
 Height: 3.92 in
 Width: 4.51 in
 Colors: 8
 Colorway: Colorway 1
 Zoom: 1:1

Machine format: Tajima
 Color changes: 7
 Stops: 8
 Trims: 115
 Appliqués: 0
 Left: 54.8 mm
 Right: 59.8 mm
 Up: 50.3 mm
 Down: 49.3 mm
 EndX: 0.00 in
 EndY: 0.00 in
 Area: 17.69 in²
 Max stitch: 6.9 mm
 Min stitch: 0.0 mm
 Max jump: 6.9 mm
 Total thread: 334.31ft
 Total bobbin: 107.09ft

Stop Sequence:

#	N#	Color	St.	Code	Name	Chart
1.	1		5,822	R235 G104 B161		
2.	2		2,309	R235 G168 B190		
3.	4		173	R29 G77 B21		
4.	5		4,111	R214 G214 B214		
5.	3		768	R133 G88 B44		
6.	6		355	R219 G183 B145		
7.	9		152	R184 G34 B97		
8.	8		9,316	8 Black		Default



Production Worksheet

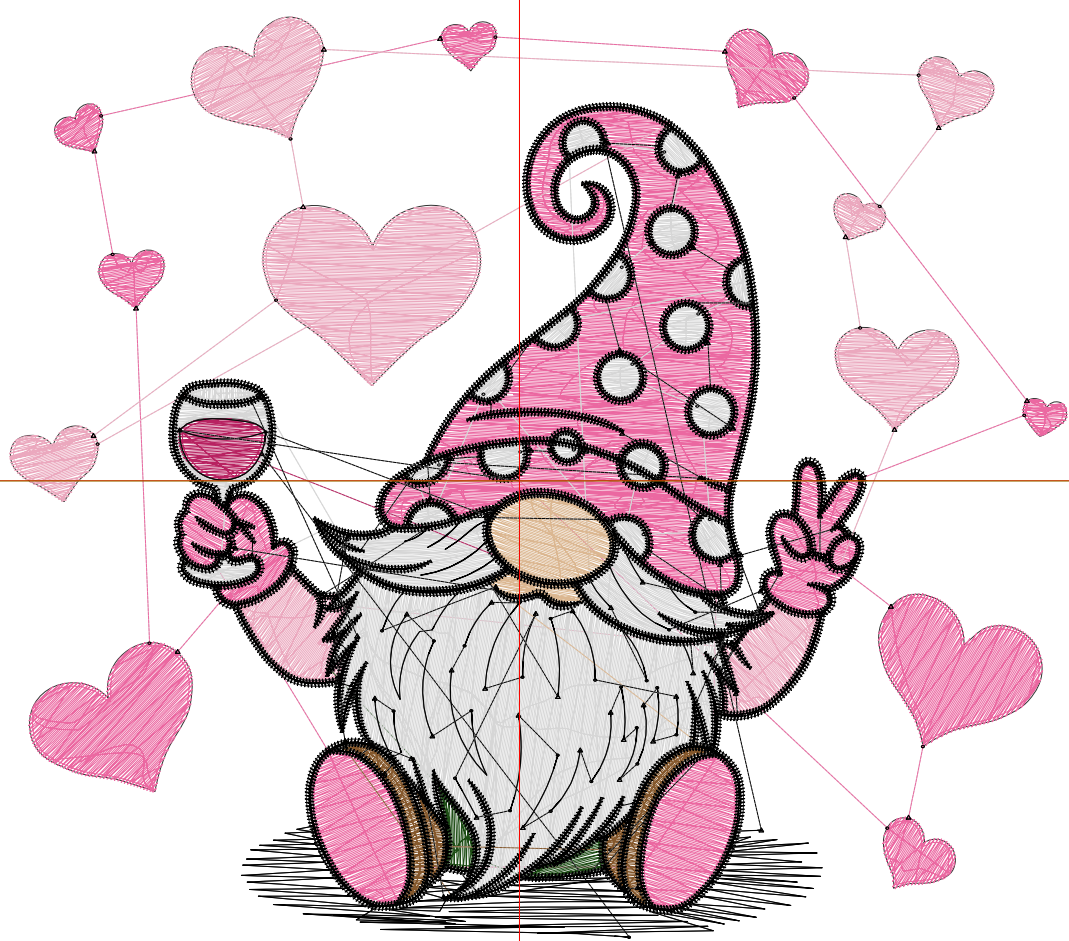
Wilcom EmbroideryStudio - Designing



Design: **5.50 inch**

Title:

Stitches: 29,224
Height: 4.79 in
Width: 5.51 in
Colors: 8
Colorway: Colorway 1
Zoom: 1:1



Production Worksheet

Wilcom EmbroideryStudio - Designing



Design: **5.50 inch**

Title:

Stitches: 29,224
 Height: 4.79 in
 Width: 5.51 in
 Colors: 8
 Colorway: Colorway 1
 Zoom: 1:1

Machine format: Tajima
 Color changes: 7
 Stops: 8
 Trims: 121
 Appliqués: 0
 Left: 67.5 mm
 Right: 72.5 mm
 Up: 61.4 mm
 Down: 60.4 mm
 EndX: 0.00 in
 EndY: 0.00 in
 Area 26.41 in²
 Max stitch: 10.9 mm
 Min stitch: 0.0 mm
 Max jump: 7.0 mm
 Total thread: 448.41ft
 Total bobbin: 150.53ft

Stop Sequence:

#	N#	Color	St.	Code	Name	Chart
1.	1		7,632		R235 G104 B161	
2.	2		3,042		R235 G168 B190	
3.	4		202		R29 G77 B21	
4.	5		5,548		R214 G214 B214	
5.	3		946		R133 G88 B44	
6.	6		472		R219 G183 B145	
7.	9		196		R184 G34 B97	
8.	8		11,184	8	Black	Default

Production Worksheet

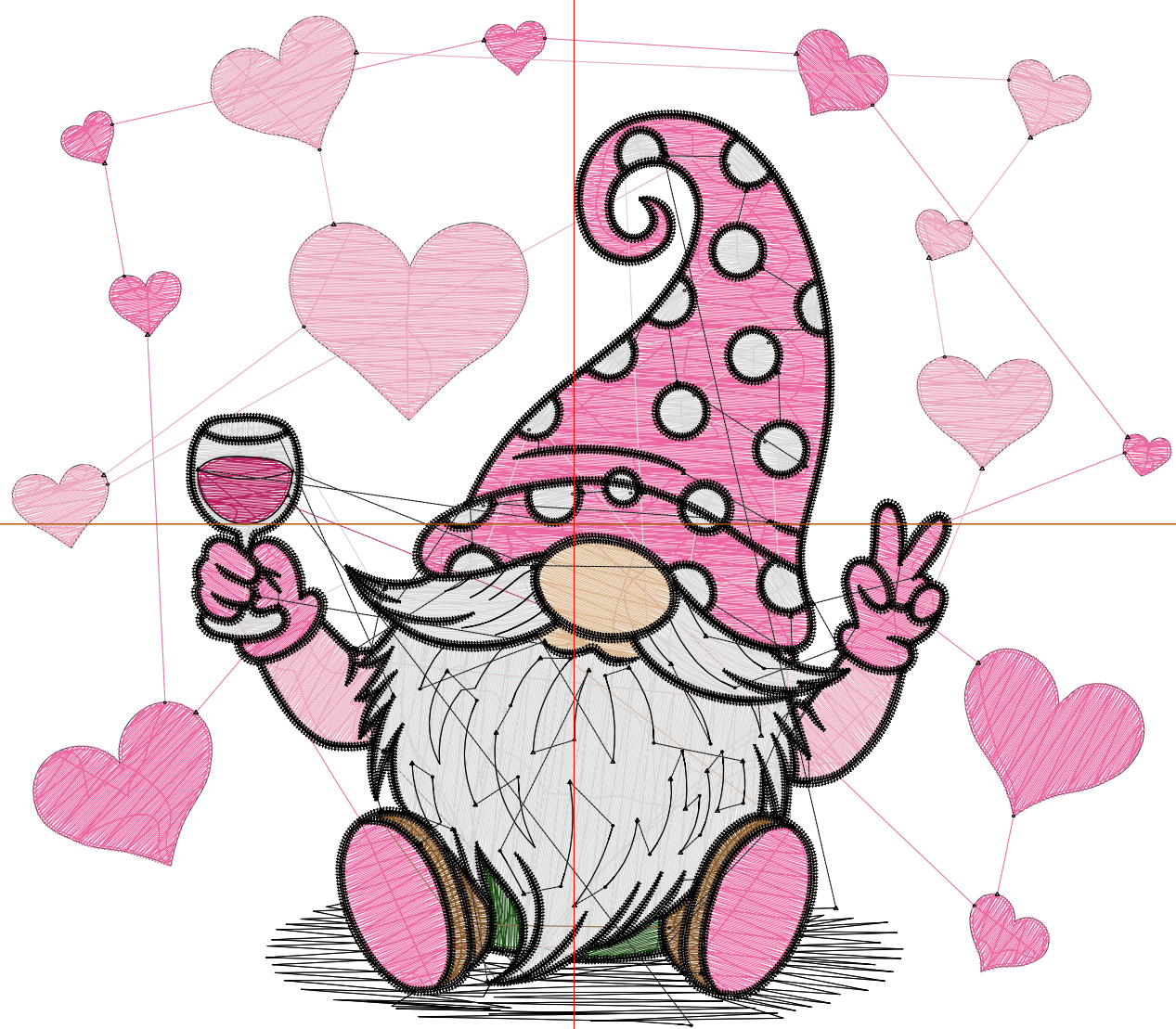
Wilcom EmbroideryStudio - Designing



Design: **6.50 inch**

Title:

Stitches: 35,721
Height: 5.67 in
Width: 6.51 in
Colors: 8
Colorway: Colorway 1
Zoom: 1:1



Production Worksheet

Wilcom EmbroideryStudio - Designing



Design: **6.50 inch**

Title:

Stitches: 35,721
 Height: 5.67 in
 Width: 6.51 in
 Colors: 8
 Colorway: Colorway 1
 Zoom: 1:1

Machine format: Tajima
 Color changes: 7
 Stops: 8
 Trims: 124
 Appliqués: 0
 Left: 80.2 mm
 Right: 85.2 mm
 Up: 72.5 mm
 Down: 71.4 mm
 EndX: 0.00 in
 EndY: 0.00 in
 Area 36.88 in²
 Max stitch: 6.9 mm
 Min stitch: 0.0 mm
 Max jump: 6.9 mm
 Total thread: 576.82ft
 Total bobbin: 201.37ft

Stop Sequence:

#	N#	Color	St.	Code	Name	Chart
1.	1		9,671		R235 G104 B161	
2.	2		3,886		R235 G168 B190	
3.	4		257		R29 G77 B21	
4.	5		7,025		R214 G214 B214	
5.	3		1,108		R133 G88 B44	
6.	6		584		R219 G183 B145	
7.	9		252		R184 G34 B97	
8.	8		12,936	8	Black	Default

Production Worksheet

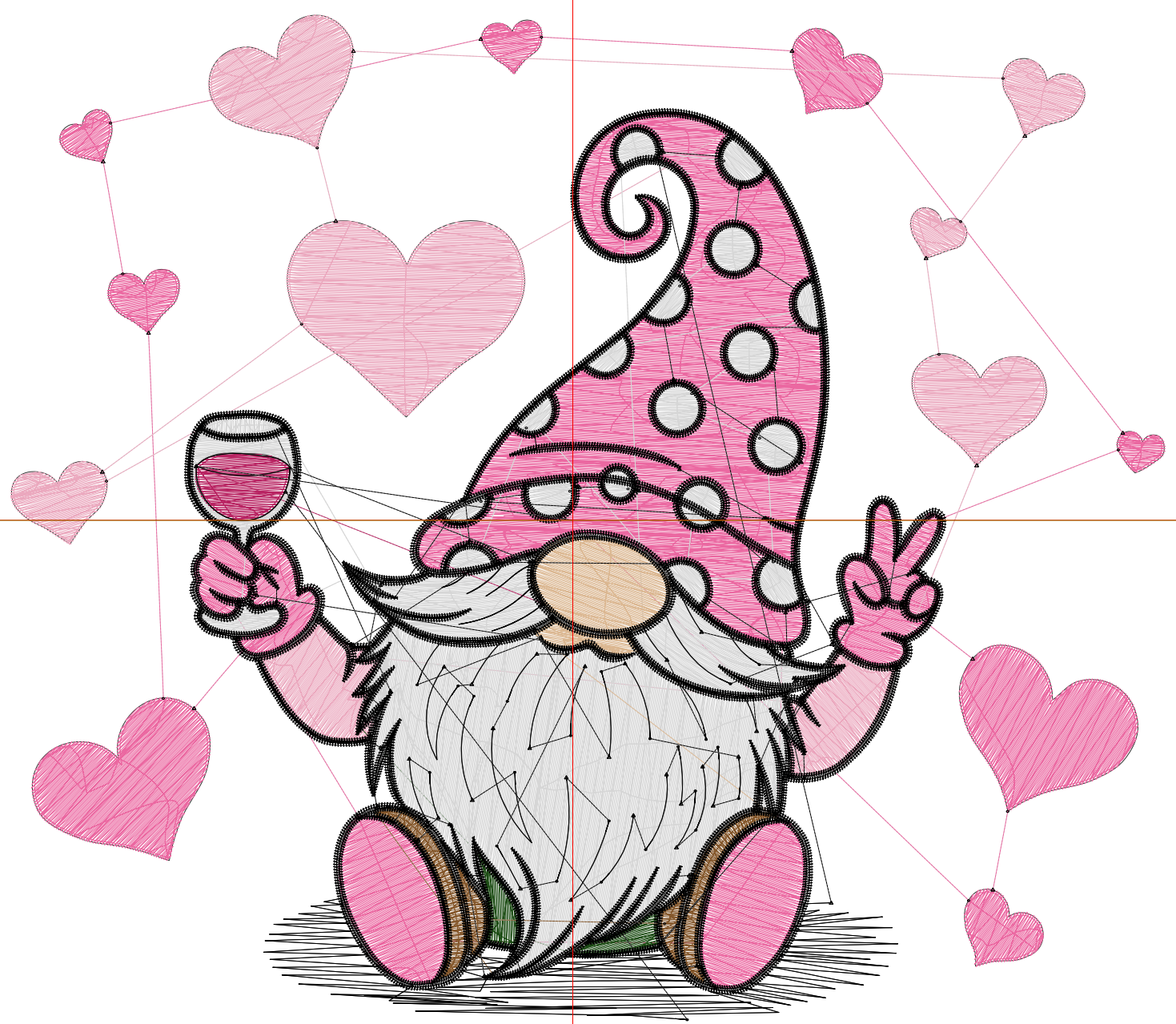
Wilcom EmbroideryStudio - Designing



Design: **7.50 inch**

Title:

Stitches: 42,935
Height: 6.54 in
Width: 7.51 in
Colors: 8
Colorway: Colorway 1
Zoom: 1:1



Production Worksheet

Wilcom EmbroideryStudio - Designing



Design: **7.50 inch**

Title:

Stitches: 42,935
 Height: 6.54 in
 Width: 7.51 in
 Colors: 8
 Colorway: Colorway 1
 Zoom: 1:1

Machine format: Tajima
 Color changes: 7
 Stops: 8
 Trims: 128
 Appliqués: 0
 Left: 92.9 mm
 Right: 97.9 mm
 Up: 83.5 mm
 Down: 82.5 mm
 EndX: 0.00 in
 EndY: 0.00 in
 Area 49.10 in²
 Max stitch: 7.0 mm
 Min stitch: 0.1 mm
 Max jump: 7.0 mm
 Total thread: 721.83ft
 Total bobbin: 259.25ft

Stop Sequence:

#	N#	Color	St.	Code	Name	Chart
1.	1		12,014		R235 G104 B161	
2.	2		4,830		R235 G168 B190	
3.	4		317		R29 G77 B21	
4.	5		8,760		R214 G214 B214	
5.	3		1,261		R133 G88 B44	
6.	6		726		R219 G183 B145	
7.	9		315		R184 G34 B97	
8.	8		14,710	8	Black	Default