

Production Worksheet

Wilcom EmbroideryStudio - Designing



Design: **2**

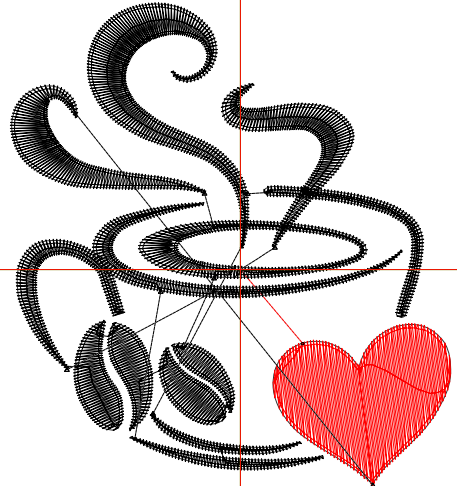
Title:

Stitches: 3,498
 Height: 2.51 in
 Width: 2.29 in
 Colors: 2
 Colorway: Colorway 1
 Zoom: 1:1

Machine format: Tajima
 Color changes: 1
 Stops: 2
 Trims: 9
 Appliqués: 0
 Left: 30.5 mm
 Right: 27.8 mm
 Up: 35.3 mm
 Down: 28.5 mm
 EndX: 0.00 in
 EndY: 0.00 in
 Area: 5.76 in²
 Max stitch: 6.1 mm
 Min stitch: 0.1 mm
 Max jump: 6.2 mm
 Total thread: 58.63ft
 Total bobbin: 20.75ft

Stop Sequence:

#	N#	Color	St.	Code	Name	Chart
1.	3	 	601	3	Red	Default
2.	8	 	2,895	8	Black	Default



Production Worksheet

Wilcom EmbroideryStudio - Designing



Design: **3**

Title:

Stitches: 5,287
 Height: 3.51 in
 Width: 3.21 in
 Colors: 2
 Colorway: Colorway 1
 Zoom: 1:1

Machine format: Tajima
 Color changes: 1
 Stops: 2
 Trims: 9
 Appliqués: 0
 Left: 42.1 mm
 Right: 39.4 mm
 Up: 48.0 mm
 Down: 41.2 mm
 EndX: 0.00 in
 EndY: 0.00 in
 Area: 11.27 in²
 Max stitch: 7.0 mm
 Min stitch: 0.2 mm
 Max jump: 6.9 mm
 Total thread: 101.07ft
 Total bobbin: 38.95ft

Stop Sequence:

#	N#	Color	St.	Code	Name	Chart
1.	3	█	1,057	3	Red	Default
2.	8	█	4,228	8	Black	Default



Production Worksheet

Wilcom EmbroideryStudio - Designing



Design: **4**

Title:

Stitches: 7,621
 Height: 4.51 in
 Width: 4.12 in
 Colors: 2
 Colorway: Colorway 1
 Zoom: 1:1

Machine format: Tajima
 Color changes: 1
 Stops: 2
 Trims: 11
 Appliqués: 0
 Left: 53.7 mm
 Right: 51.0 mm
 Up: 60.7 mm
 Down: 53.9 mm
 EndX: 0.00 in
 EndY: 0.00 in
 Area: 18.61 in²
 Max stitch: 7.0 mm
 Min stitch: 0.3 mm
 Max jump: 7.0 mm
 Total thread: 157.15ft
 Total bobbin: 63.10ft

Stop Sequence:

#	N#	Color	St.	Code	Name	Chart
1.	3		1,629	3	Red	Default
2.	8		5,990	8	Black	Default



Production Worksheet

Wilcom EmbroideryStudio - Designing



Design: **5**

Title:

Stitches: 10,200
 Height: 5.51 in
 Width: 5.04 in
 Colors: 2
 Colorway: Colorway 1
 Zoom: 1:1



Machine format: Tajima
 Color changes: 1
 Stops: 2
 Trims: 12
 Appliqués: 0
 Left: 65.3 mm
 Right: 62.6 mm
 Up: 73.4 mm
 Down: 66.6 mm
 EndX: 0.00 in
 EndY: 0.00 in
 Area: 27.77 in²
 Max stitch: 7.0 mm
 Min stitch: 0.3 mm
 Max jump: 7.0 mm
 Total thread: 224.63ft
 Total bobbin: 93.06ft

Stop Sequence:

#	N#	Color	St.	Code	Name	Chart
1.	3	█	2,326	3	Red	Default
2.	8	█	7,872	8	Black	Default