

# Production Worksheet

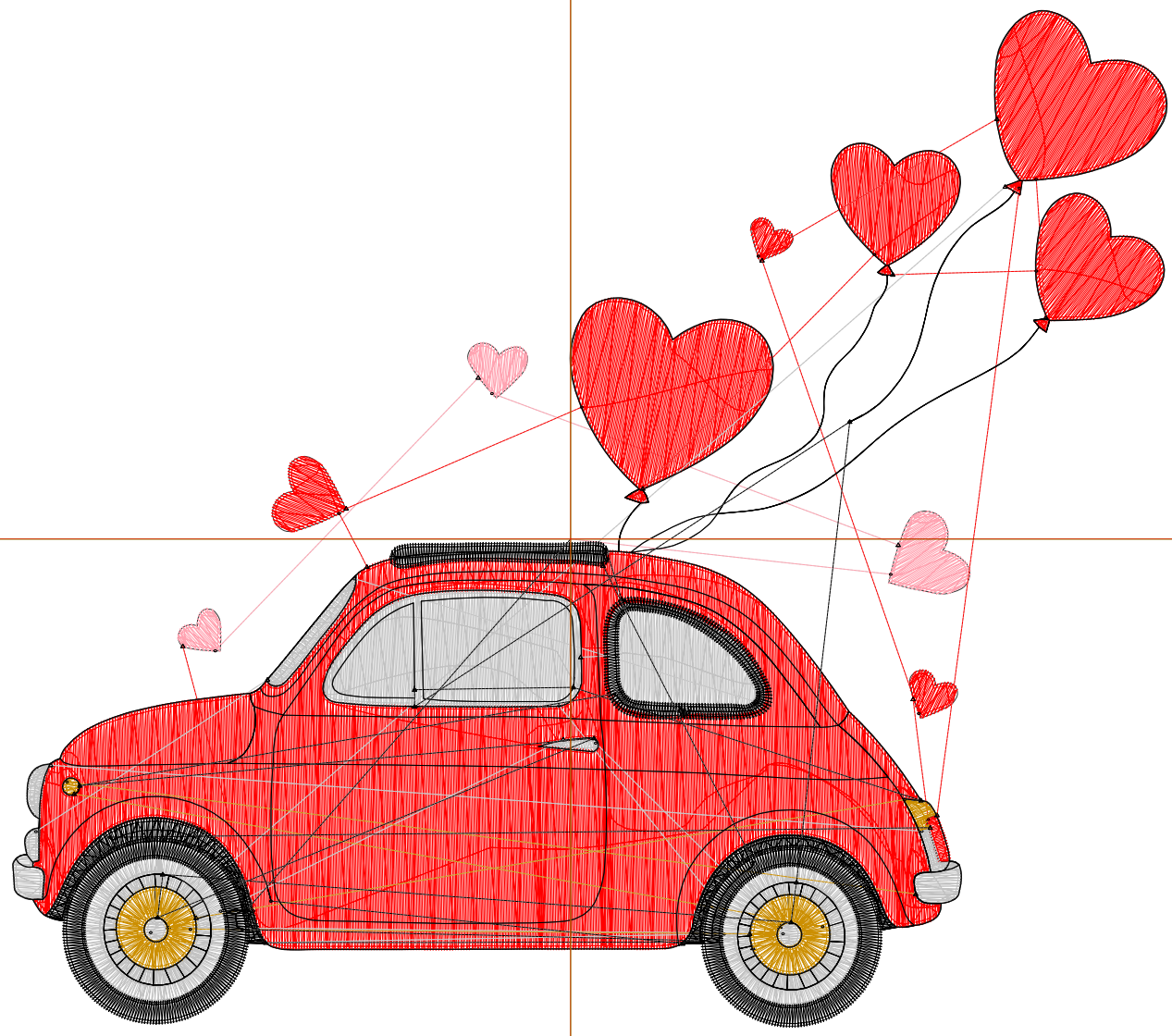
Wilcom EmbroideryStudio - Designing



Design: **6**

Title:

Stitches: 20,808  
Height: 5.73 in  
Width: 6.50 in  
Colors: 5  
Colorway: Colorway 1  
Zoom: 1:1



# Production Worksheet

Wilcom EmbroideryStudio - Designing



Design: **6**

Title:

Stitches: 20,808  
 Height: 5.73 in  
 Width: 6.50 in  
 Colors: 5  
 Colorway: Colorway 1  
 Zoom: 1:1

Machine format: Tajima  
 Color changes: 4  
 Stops: 5  
 Trims: 44  
 Appliqués: 0  
 Left: 79.9 mm  
 Right: 85.3 mm  
 Up: 75.6 mm  
 Down: 69.8 mm  
 EndX: 0.00 in  
 EndY: 0.00 in  
 Area 37.23 in<sup>2</sup>  
 Max stitch: 7.0 mm  
 Min stitch: 0.2 mm  
 Max jump: 7.0 mm  
 Total thread: 379.73ft  
 Total bobbin: 143.15ft

Stop Sequence:

#	N#	Color	St.	Code	Name	Chart
1.	2		525		R255 G163 B177	
2.	1		10,960		R255 G0 B0	
3.	3		4,024		R194 G194 B194	
4.	4		917		R204 G143 B1	
5.	8		4,380	8	Black	Default

# Production Worksheet

Wilcom EmbroideryStudio - Designing



Design: **3**

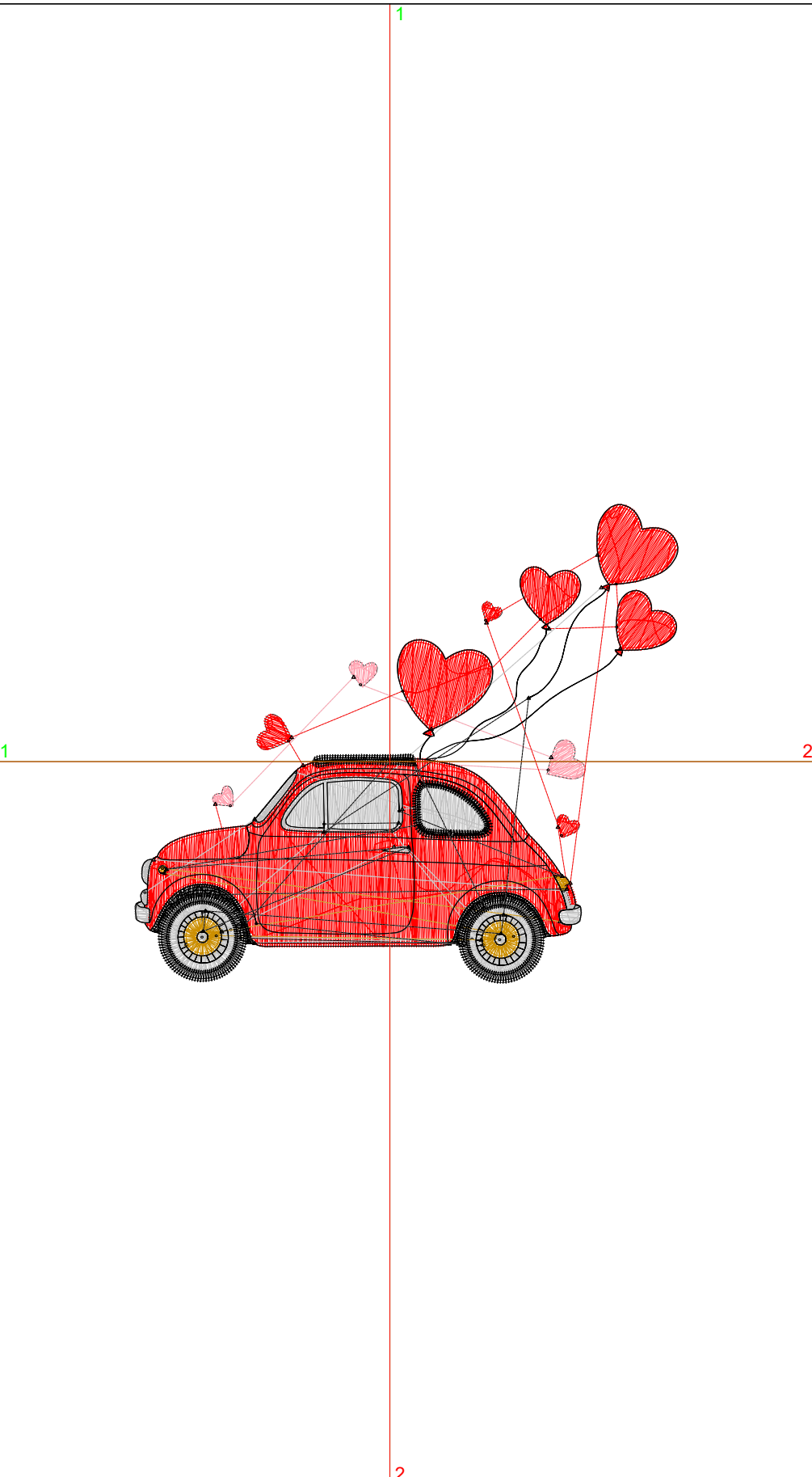
Title:

Stitches: 9,482  
 Height: 3.09 in  
 Width: 3.50 in  
 Colors: 5  
 Colorway: Colorway 1  
 Zoom: 1:1

Machine format: Tajima  
 Color changes: 4  
 Stops: 5  
 Trims: 43  
 Appliqués: 0  
 Left: 41.8 mm  
 Right: 47.2 mm  
 Up: 42.2 mm  
 Down: 36.3 mm  
 EndX: 0.00 in  
 EndY: 0.00 in  
 Area: 10.82 in<sup>2</sup>  
 Max stitch: 9.5 mm  
 Min stitch: 0.0 mm  
 Max jump: 7.0 mm  
 Total thread: 143.73ft  
 Total bobbin: 47.33ft

Stop Sequence:

#	N#	Color	St.	Code	Name	Chart
1.	2		260		R255 G163 B177	
2.	1		4,195		R255 G0 B0	
3.	3		1,911		R194 G194 B194	
4.	4		532		R204 G143 B1	
5.	8		2,582	8	Black	Default



# Production Worksheet

Wilcom EmbroideryStudio - Designing



Design: **4**

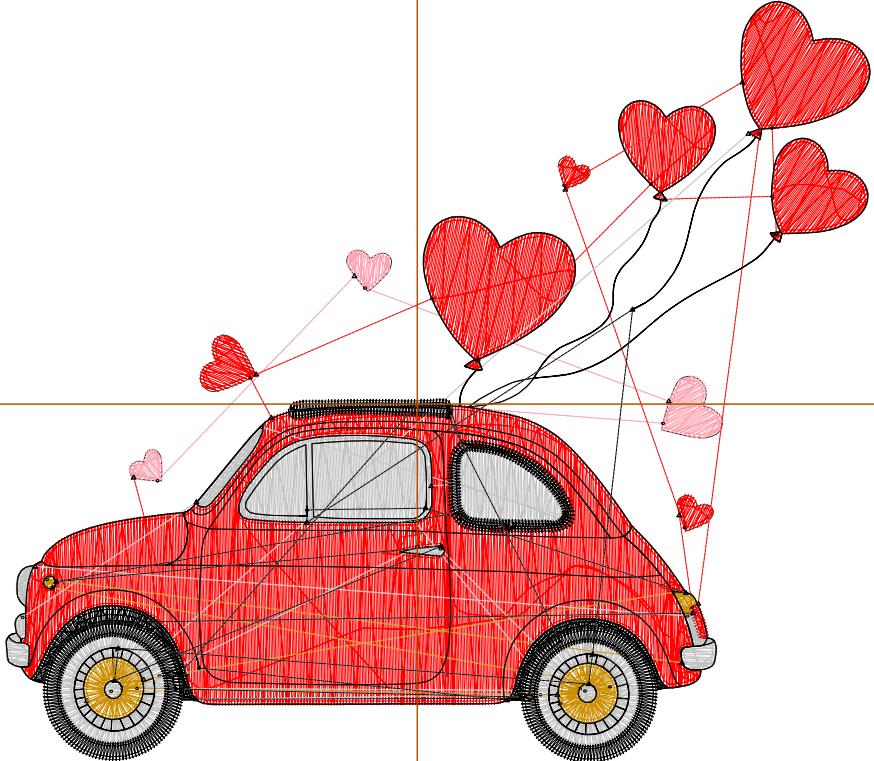
Title:

Stitches: 12,710  
 Height: 3.97 in  
 Width: 4.50 in  
 Colors: 5  
 Colorway: Colorway 1  
 Zoom: 1:1

Machine format: Tajima  
 Color changes: 4  
 Stops: 5  
 Trims: 43  
 Appliqués: 0  
 Left: 54.5 mm  
 Right: 59.9 mm  
 Up: 53.3 mm  
 Down: 47.5 mm  
 EndX: 0.00 in  
 EndY: 0.00 in  
 Area: 17.87 in<sup>2</sup>  
 Max stitch: 7.0 mm  
 Min stitch: 0.0 mm  
 Max jump: 7.0 mm  
 Total thread: 209.22ft  
 Total bobbin: 73.59ft

Stop Sequence:

#	N#	Color	St.	Code	Name	Chart
1.	2		334		R255 G163 B177	
2.	1		6,084		R255 G0 B0	
3.	3		2,465		R194 G194 B194	
4.	4		640		R204 G143 B1	
5.	8		3,185	8	Black	Default



# Production Worksheet

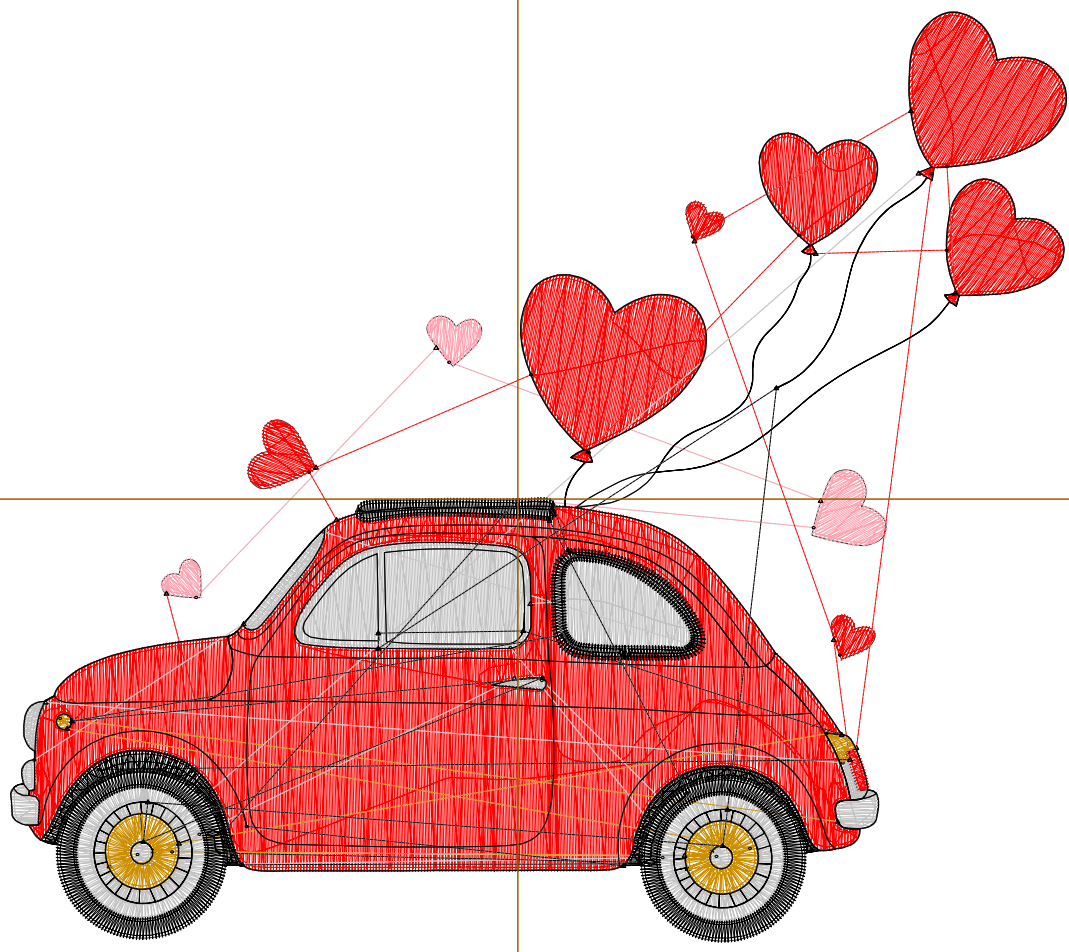
Wilcom EmbroideryStudio - Designing



Design: **5**

Title:

Stitches: 16,534  
Height: 4.85 in  
Width: 5.50 in  
Colors: 5  
Colorway: Colorway 1  
Zoom: 1:1



1

1

2

2

# Production Worksheet

Wilcom EmbroideryStudio - Designing



Design: **5**

Title:

Stitches: 16,534  
 Height: 4.85 in  
 Width: 5.50 in  
 Colors: 5  
 Colorway: Colorway 1  
 Zoom: 1:1

Machine format: Tajima  
 Color changes: 4  
 Stops: 5  
 Trims: 44  
 Appliqués: 0  
 Left: 67.2 mm  
 Right: 72.6 mm  
 Up: 64.5 mm  
 Down: 58.7 mm  
 EndX: 0.00 in  
 EndY: 0.00 in  
 Area 26.67 in<sup>2</sup>  
 Max stitch: 7.0 mm  
 Min stitch: 0.1 mm  
 Max jump: 7.0 mm  
 Total thread: 287.72ft  
 Total bobbin: 105.24ft

Stop Sequence:

#	N#	Color	St.	Code	Name	Chart
1.	2		430		R255 G163 B177	
2.	1		8,352		R255 G0 B0	
3.	3		3,182		R194 G194 B194	
4.	4		788		R204 G143 B1	
5.	8		3,780	8	Black	Default

# Production Worksheet

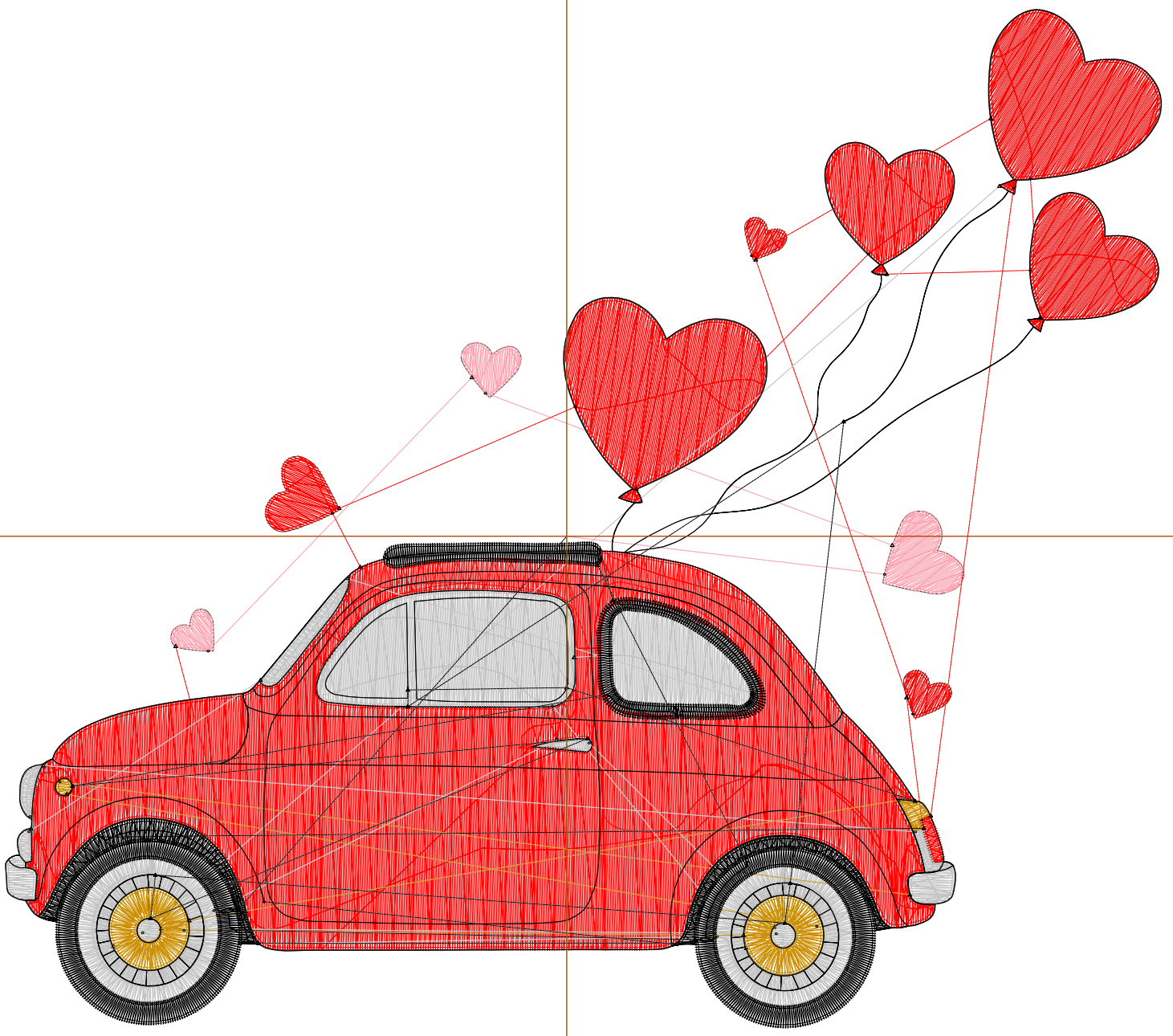
Wilcom EmbroideryStudio - Designing



Design: **7**

Title:

Stitches: 25,646  
Height: 6.61 in  
Width: 7.50 in  
Colors: 5  
Colorway: Colorway 1  
Zoom: 1:1



# Production Worksheet

Wilcom EmbroideryStudio - Designing



Design: **7**

Title:

Stitches: 25,646  
 Height: 6.61 in  
 Width: 7.50 in  
 Colors: 5  
 Colorway: Colorway 1  
 Zoom: 1:1

Machine format: Tajima  
 Color changes: 4  
 Stops: 5  
 Trims: 45  
 Appliqués: 0  
 Left: 92.6 mm  
 Right: 98.0 mm  
 Up: 86.8 mm  
 Down: 81.0 mm  
 EndX: 0.00 in  
 EndY: 0.00 in  
 Area 49.55 in<sup>2</sup>  
 Max stitch: 7.8 mm  
 Min stitch: 0.2 mm  
 Max jump: 7.0 mm  
 Total thread: 484.28ft  
 Total bobbin: 186.28ft

Stop Sequence:

#	N#	Color	St.	Code	Name	Chart
1.	2		633		R255 G163 B177	
2.	1		13,935		R255 G0 B0	
3.	3		5,018		R194 G194 B194	
4.	4		1,075		R204 G143 B1	
5.	8		4,983	8	Black	Default