

Production Worksheet

Wilcom EmbroideryStudio - Designing



Design: **3**

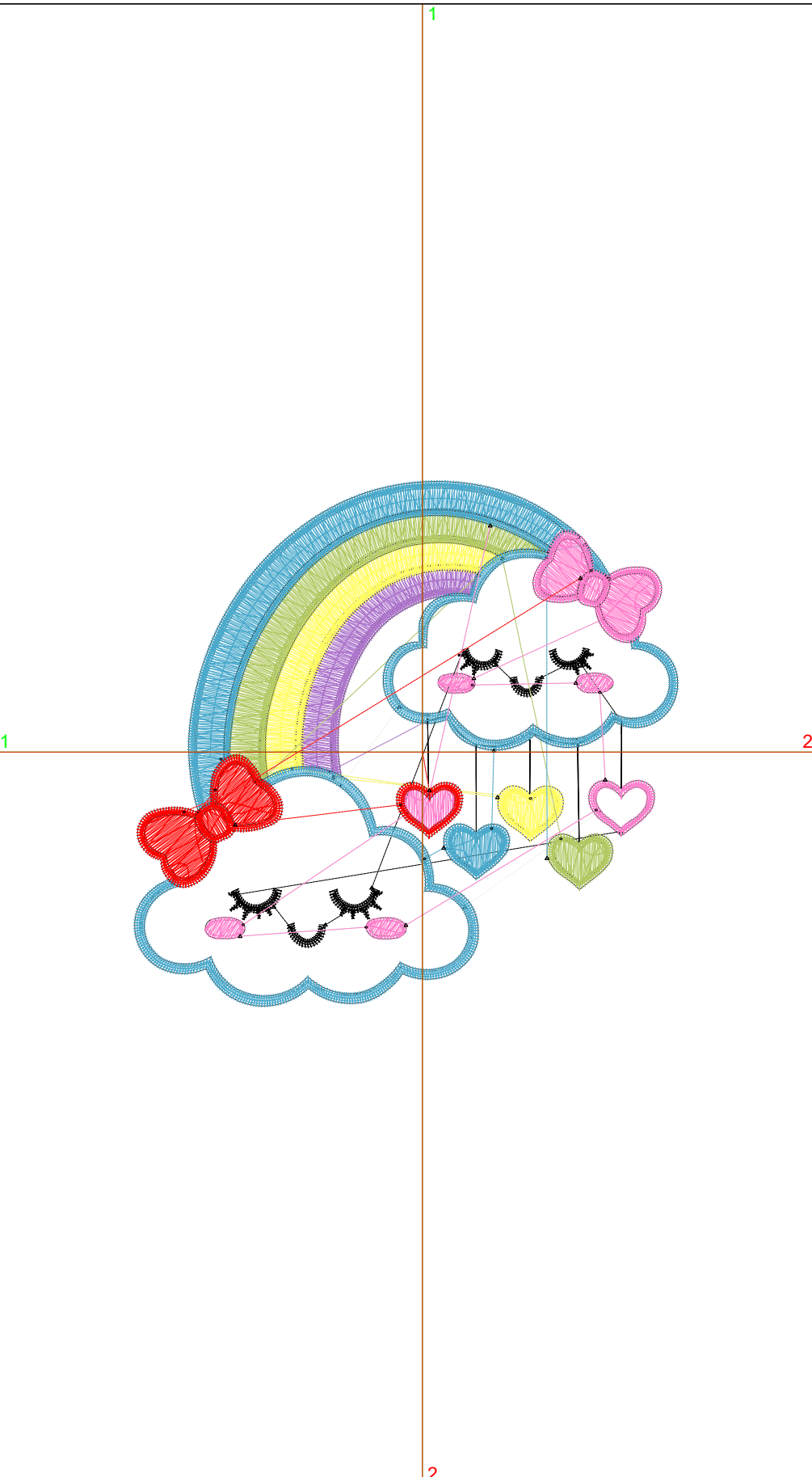
Title:

Stitches: 16,792
 Height: 3.39 in
 Width: 3.51 in
 Colors: 8
 Colorway: Colorway 1
 Zoom: 1:1

Machine format: Tajima
 Color changes: 7
 Stops: 8
 Trims: 34
 Appliqués: 0
 Left: 47.3 mm
 Right: 42.0 mm
 Up: 44.5 mm
 Down: 41.7 mm
 EndX: 0.00 in
 EndY: 0.00 in
 Area: 11.92 in²
 Max stitch: 7.0 mm
 Min stitch: 0.0 mm
 Max jump: 7.0 mm
 Total thread: 271.51ft
 Total bobbin: 94.05ft

Stop Sequence:

#	N#	Color	St.	Code	Name	Chart
1.	9		4,280	9	White	Default
2.	8		817	8	Black	Default
3.	3		973		R173 G117 B204	
4.	4		1,553		R255 G252 B98	
5.	2		1,777		R178 G201 B99	
6.	1		4,340		R75 G170 B204	
7.	15		1,722	15	Pink	Default
8.	5		1,328		R255 G0 B0	



Production Worksheet

Wilcom EmbroideryStudio - Designing



Design: **4**

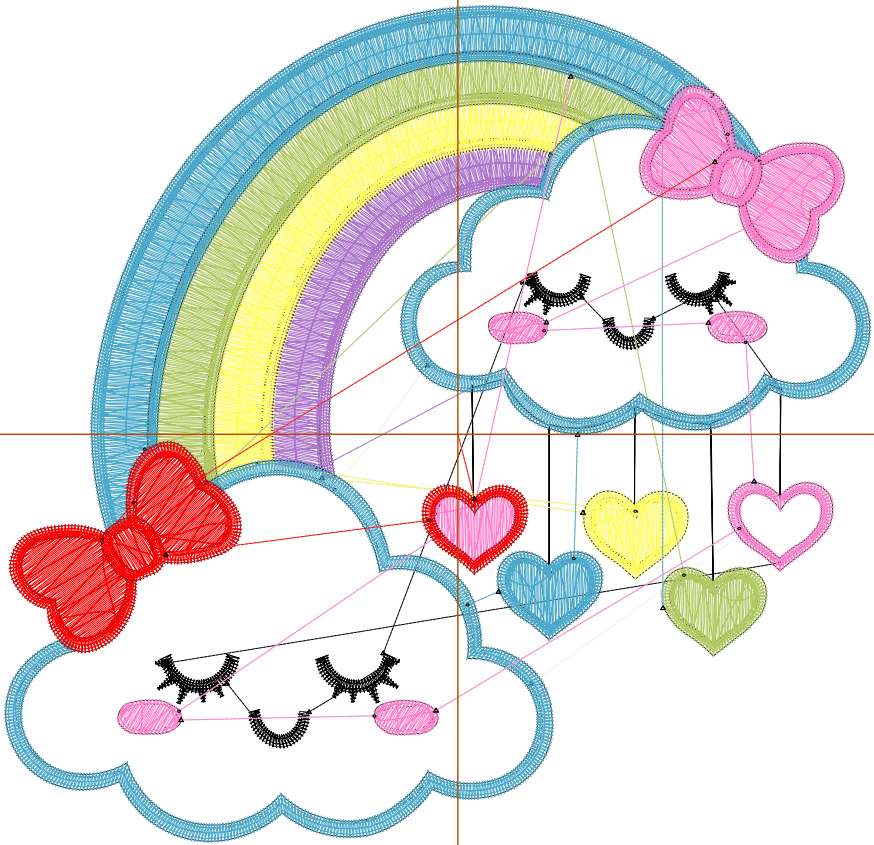
Title:

Stitches: 23,373
 Height: 4.36 in
 Width: 4.51 in
 Colors: 8
 Colorway: Colorway 1
 Zoom: 1:1

Machine format: Tajima
 Color changes: 7
 Stops: 8
 Trims: 34
 Appliqués: 0
 Left: 60.0 mm
 Right: 54.6 mm
 Up: 56.7 mm
 Down: 54.0 mm
 EndX: 0.00 in
 EndY: 0.00 in
 Area: 19.67 in²
 Max stitch: 7.0 mm
 Min stitch: 0.1 mm
 Max jump: 7.0 mm
 Total thread: 405.68ft
 Total bobbin: 147.97ft

Stop Sequence:

#	N#	Color	St.	Code	Name	Chart
1.	9		6,544	9	White	Default
2.	8		1,013	8	Black	Default
3.	3		1,364	R173	G117 B204	
4.	4		2,142	R255	G252 B98	
5.	2		2,491	R178	G201 B99	
6.	1		5,792	R75	G170 B204	
7.	15		2,278	15	Pink	Default
8.	5		1,747	R255	G0 B0	



Production Worksheet

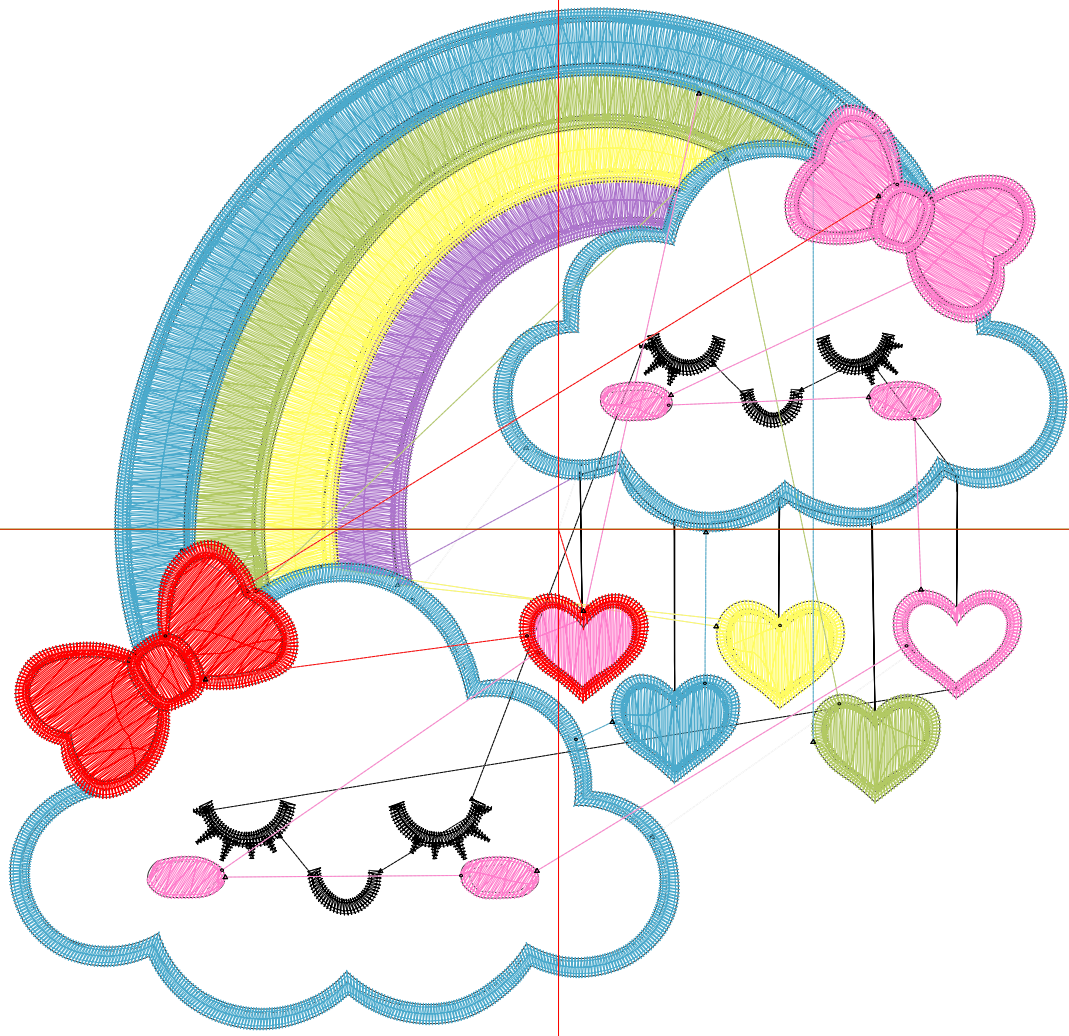
Wilcom EmbroideryStudio - Designing



Design: **5**

Title:

Stitches: 30,786
Height: 5.33 in
Width: 5.51 in
Colors: 8
Colorway: Colorway 1
Zoom: 1:1



Production Worksheet

Wilcom EmbroideryStudio - Designing



Design: **5**

Title:

Stitches: 30,786
 Height: 5.33 in
 Width: 5.51 in
 Colors: 8
 Colorway: Colorway 1
 Zoom: 1:1

Machine format: Tajima
 Color changes: 7
 Stops: 8
 Trims: 36
 Appliqués: 0
 Left: 72.7 mm
 Right: 67.3 mm
 Up: 69.0 mm
 Down: 66.3 mm
 EndX: 0.00 in
 EndY: 0.00 in
 Area 29.36 in²
 Max stitch: 7.0 mm
 Min stitch: 0.1 mm
 Max jump: 7.0 mm
 Total thread: 566.03ft
 Total bobbin: 214.16ft

Stop Sequence:

#	N#	Color	St.	Code	Name	Chart
1.	9		9,227	9	White	Default
2.	8		1,229	8	Black	Default
3.	3		1,801		R173 G117 B204	
4.	4		2,811		R255 G252 B98	
5.	2		3,241		R178 G201 B99	
6.	1		7,375		R75 G170 B204	
7.	15		2,881	15	Pink	Default
8.	5		2,219		R255 G0 B0	

Production Worksheet

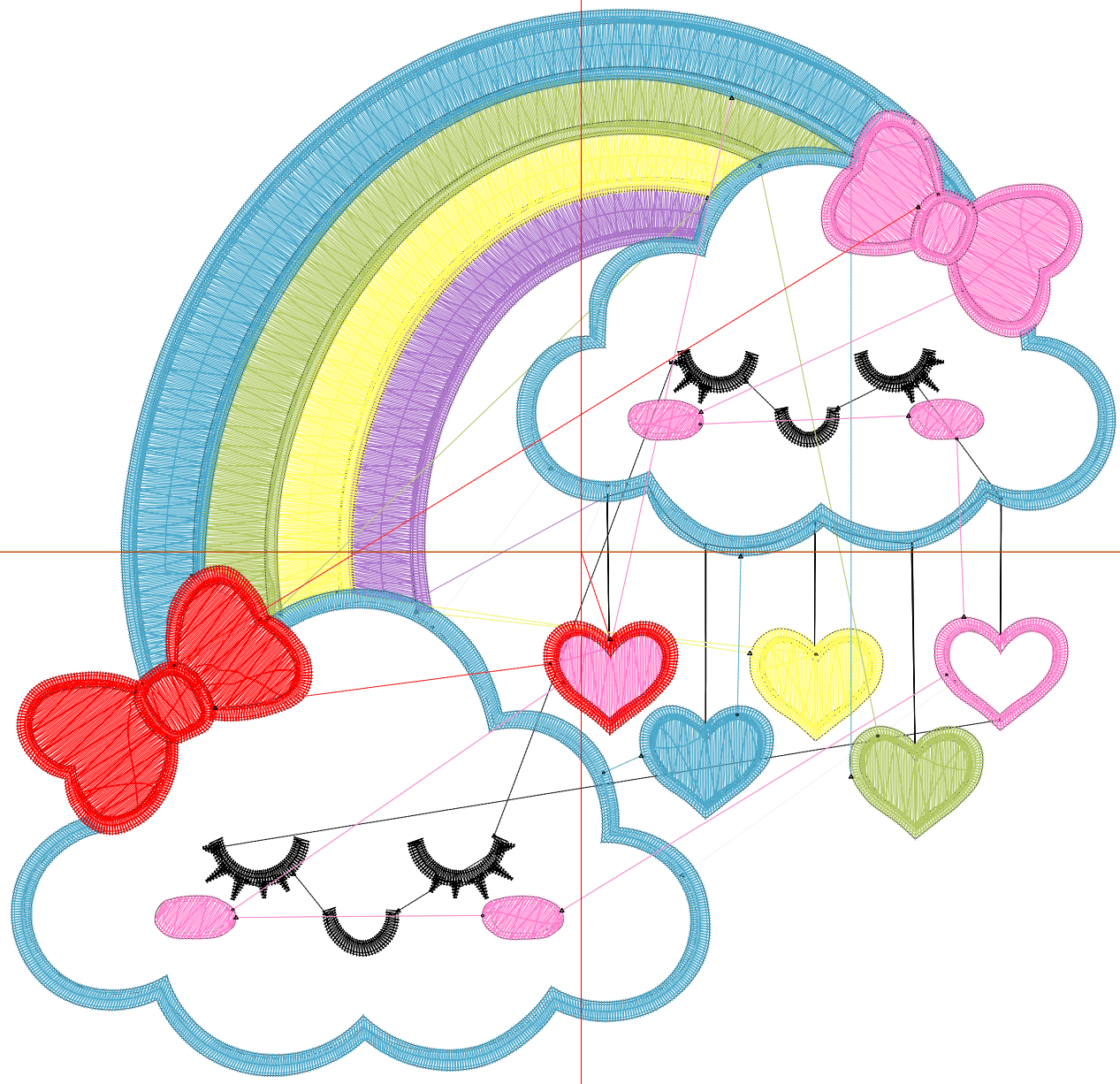
Wilcom EmbroideryStudio - Designing



Design: **6**

Title:

Stitches: 39,052
Height: 6.29 in
Width: 6.51 in
Colors: 8
Colorway: Colorway 1
Zoom: 1:1



Production Worksheet

Wilcom EmbroideryStudio - Designing



Design: **6**

Title:

Stitches: 39,052
 Height: 6.29 in
 Width: 6.51 in
 Colors: 8
 Colorway: Colorway 1
 Zoom: 1:1

Machine format: Tajima
 Color changes: 7
 Stops: 8
 Trims: 39
 Appliqués: 0
 Left: 85.4 mm
 Right: 80.1 mm
 Up: 81.2 mm
 Down: 78.6 mm
 EndX: 0.00 in
 EndY: 0.00 in
 Area 40.98 in²
 Max stitch: 6.9 mm
 Min stitch: 0.3 mm
 Max jump: 6.9 mm
 Total thread: 752.35ft
 Total bobbin: 292.43ft

Stop Sequence:

#	N#	Color	St.	Code	Name	Chart
1.	9		12,375	9	White	Default
2.	8		1,413	8	Black	Default
3.	3		2,281		R173 G117 B204	
4.	4		3,535		R255 G252 B98	
5.	2		4,093		R178 G201 B99	
6.	1		9,083		R75 G170 B204	
7.	15		3,546	15	Pink	Default
8.	5		2,724		R255 G0 B0	

Production Worksheet

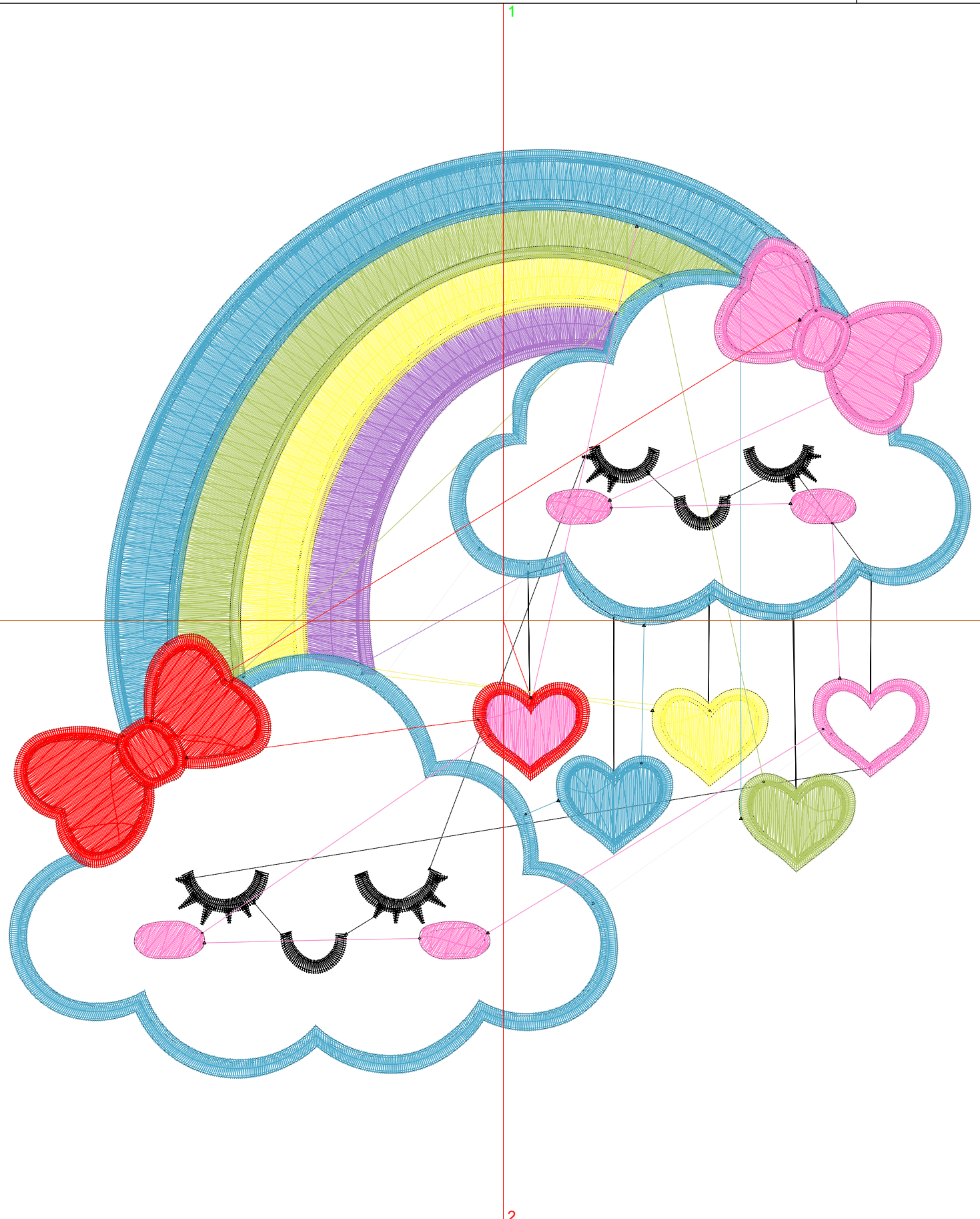
Wilcom EmbroideryStudio - Designing



Design: **7**

Title:

Stitches: 48,460
Height: 7.26 in
Width: 7.51 in
Colors: 8
Colorway: Colorway 1
Zoom: 1:1



Production Worksheet

Wilcom EmbroideryStudio - Designing



Design: **7**

Title:

Stitches: 48,460
 Height: 7.26 in
 Width: 7.51 in
 Colors: 8
 Colorway: Colorway 1
 Zoom: 1:1

Machine format: Tajima
 Color changes: 7
 Stops: 8
 Trims: 39
 Appliqués: 0
 Left: 98.1 mm
 Right: 92.8 mm
 Up: 93.5 mm
 Down: 90.8 mm
 EndX: 0.00 in
 EndY: 0.00 in
 Area 54.52 in²
 Max stitch: 6.9 mm
 Min stitch: 0.0 mm
 Max jump: 6.9 mm
 Total thread: 967.92ft
 Total bobbin: 383.59ft

Stop Sequence:

#	N#	Color	St.	Code	Name	Chart
1.	9		15,996	9	White	Default
2.	8		1,578	8	Black	Default
3.	3		2,844		R173 G117 B204	
4.	4		4,379		R255 G252 B98	
5.	2		5,082		R178 G201 B99	
6.	1		11,025		R75 G170 B204	
7.	15		4,280	15	Pink	Default
8.	5		3,274		R255 G0 B0	