

Production Worksheet

Wilcom EmbroideryStudio - Designing



Design: **3**

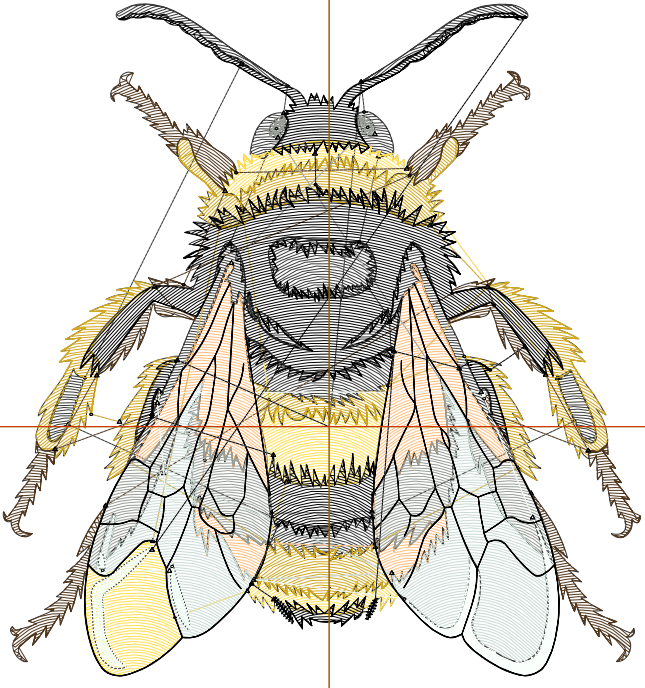
Title:

Stitches: 14,806
Height: 3.50 in
Width: 3.32 in
Colors: 9
Colorway: Colorway 1
Zoom: 1:1

Machine format: Tajima
Color changes: 8
Stops: 9
Trims: 56
Appliqués: 0
Left: 43.1 mm
Right: 41.2 mm
Up: 55.9 mm
Down: 33.0 mm
EndX: 0.00 in
EndY: 0.00 in
Area 11.60 in²
Max stitch: 6.9 mm
Min stitch: 0.0 mm
Max jump: 6.9 mm
Total thread: 177.50ft
Total bobbin: 45.87ft

Stop Sequence:

#	N#	Color	St.	Code	Name	Chart
1.	2		1,732		R57 G59 B57	
2.	4		1,258		R255 G223 B80	
3.	1		2,009		R209 G168 B31	
4.	5		1,487		R82 G54 B27	
5.	6		1,412		R255 G190 B126	
6.	7		1,261		R152 G158 B150	
7.	9		1,369		R202 G219 B213	
8.	8		567		R244 G255 B249	
9.	10		3,709		R0 G0 B0	



Production Worksheet

Wilcom EmbroideryStudio - Designing



Design: **4**

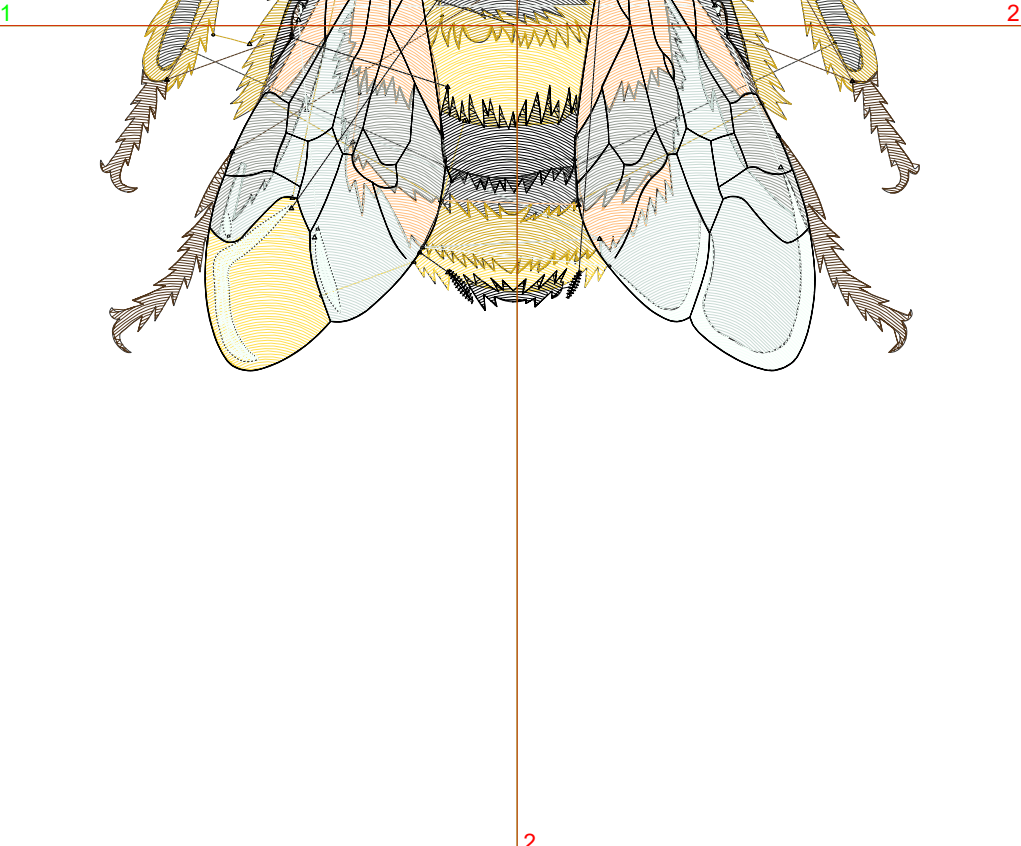
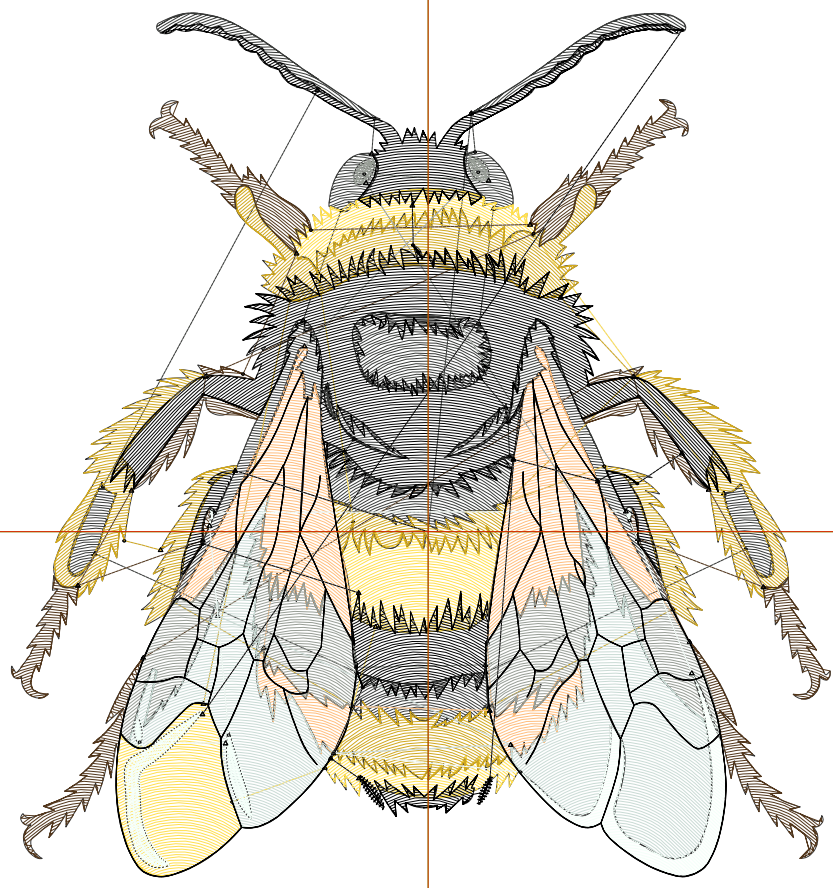
Title:

Stitches: 20,739
 Height: 4.50 in
 Width: 4.26 in
 Colors: 9
 Colorway: Colorway 1
 Zoom: 1:1

Machine format: Tajima
 Color changes: 8
 Stops: 9
 Trims: 57
 Appliqués: 0
 Left: 55.1 mm
 Right: 53.2 mm
 Up: 68.6 mm
 Down: 45.7 mm
 EndX: 0.00 in
 EndY: 0.00 in
 Area 19.18 in²
 Max stitch: 7.0 mm
 Min stitch: 0.0 mm
 Max jump: 7.0 mm
 Total thread: 256.79ft
 Total bobbin: 69.78ft

Stop Sequence:

#	N#	Color	St.	Code	Name	Chart
1.	2		2,428		R57 G59 B57	
2.	4		1,781		R255 G223 B80	
3.	1		2,801		R209 G168 B31	
4.	5		2,002		R82 G54 B27	
5.	6		2,027		R255 G190 B126	
6.	7		1,769		R152 G158 B150	
7.	9		2,055		R202 G219 B213	
8.	8		785		R244 G255 B249	
9.	10		5,089		R0 G0 B0	



Production Worksheet

Wilcom EmbroideryStudio - Designing



Design: **5**

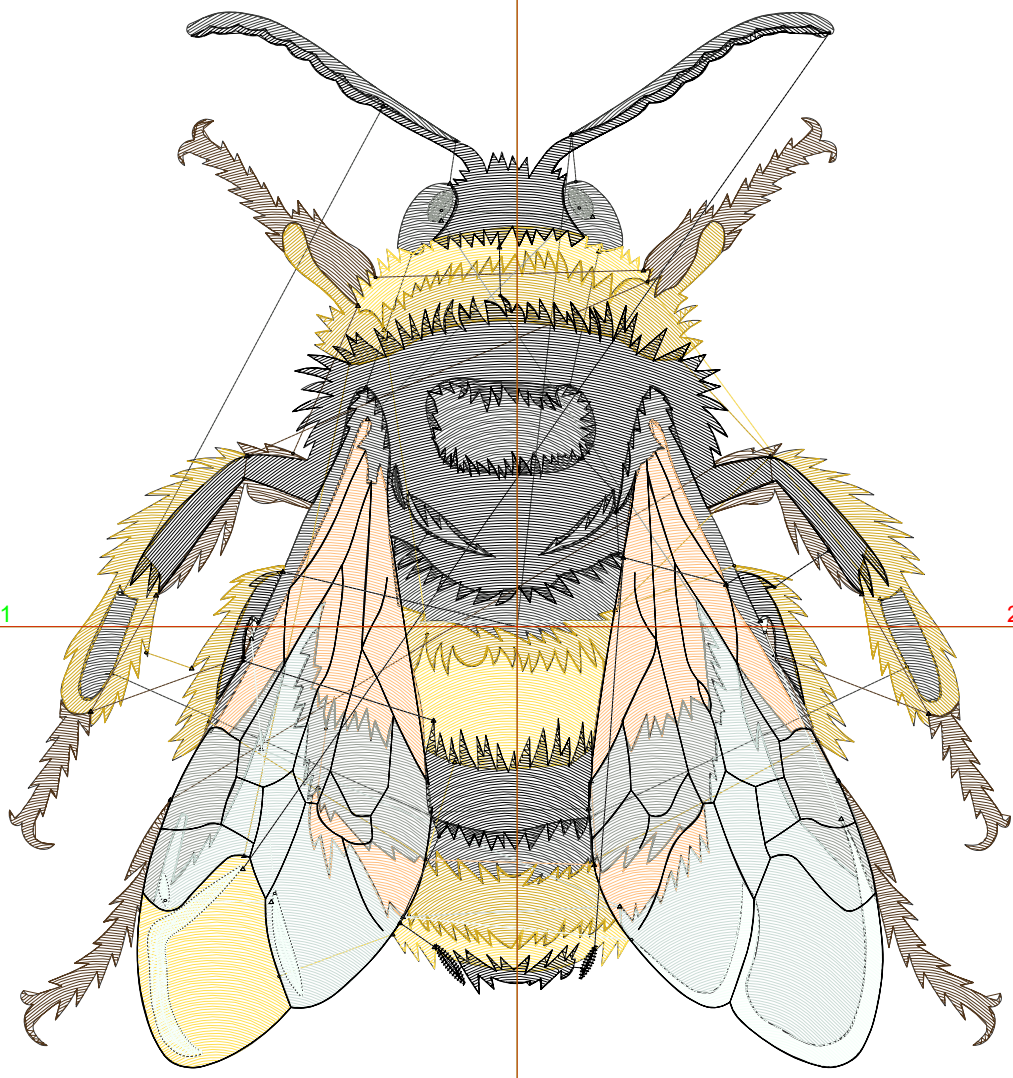
Title:

Stitches: 27,443
Height: 5.50 in
Width: 5.21 in
Colors: 9
Colorway: Colorway 1
Zoom: 1:1

Machine format: Tajima
Color changes: 8
Stops: 9
Trims: 57
Appliqués: 0
Left: 67.1 mm
Right: 65.2 mm
Up: 81.3 mm
Down: 58.4 mm
EndX: 0.00 in
EndY: 0.00 in
Area 28.64 in²
Max stitch: 7.0 mm
Min stitch: 0.0 mm
Max jump: 7.0 mm
Total thread: 349.55ft
Total bobbin: 98.68ft

Stop Sequence:

#	N#	Color	St.	Code	Name	Chart
1.	2		3,197		R57 G59 B57	
2.	4		2,438		R255 G223 B80	
3.	1		3,695		R209 G168 B31	
4.	5		2,545		R82 G54 B27	
5.	6		2,736		R255 G190 B126	
6.	7		2,384		R152 G158 B150	
7.	9		2,890		R202 G219 B213	
8.	8		982		R244 G255 B249	
9.	10		6,574		R0 G0 B0	



Production Worksheet

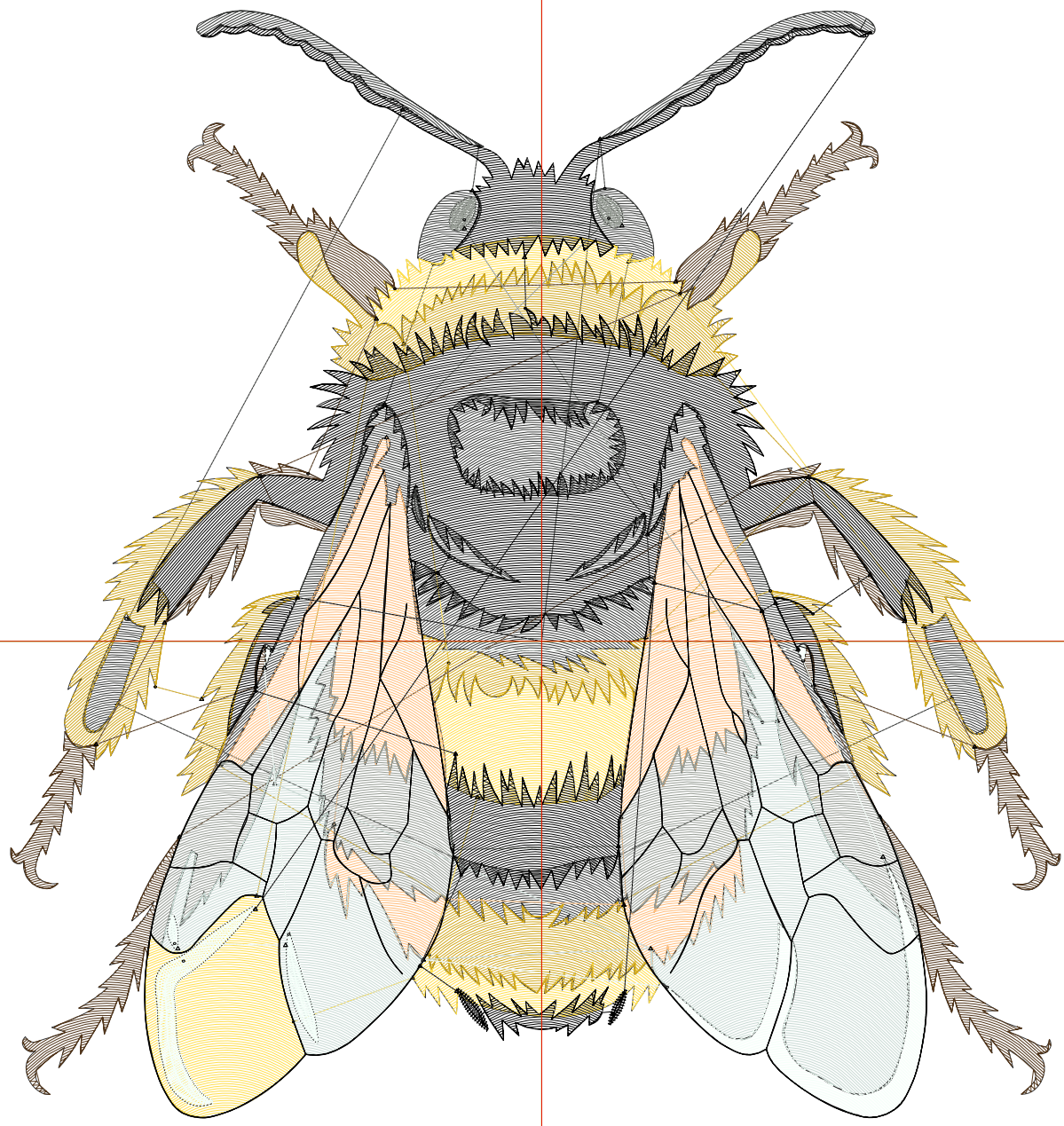
Wilcom EmbroideryStudio - Designing



Design: **6**

Title:

Stitches: 34,798
Height: 6.50 in
Width: 6.16 in
Colors: 9
Colorway: Colorway 1
Zoom: 1:1



Production Worksheet

Wilcom EmbroideryStudio - Designing



Design: **6**

Title:

Stitches: 34,798
 Height: 6.50 in
 Width: 6.16 in
 Colors: 9
 Colorway: Colorway 1
 Zoom: 1:1

Machine format: Tajima
 Color changes: 8
 Stops: 9
 Trims: 60
 Appliqués: 0
 Left: 79.1 mm
 Right: 77.3 mm
 Up: 94.0 mm
 Down: 71.1 mm
 EndX: 0.00 in
 EndY: 0.00 in
 Area 40.01 in²
 Max stitch: 8.2 mm
 Min stitch: 0.0 mm
 Max jump: 7.0 mm
 Total thread: 453.49ft
 Total bobbin: 131.68ft

Stop Sequence:

#	N#	Color	St.	Code	Name	Chart
1.	2		3,991		R57 G59 B57	
2.	4		3,123		R255 G223 B80	
3.	1		4,726		R209 G168 B31	
4.	5		3,182		R82 G54 B27	
5.	6		3,468		R255 G190 B126	
6.	7		3,038		R152 G158 B150	
7.	9		3,831		R202 G219 B213	
8.	8		1,189		R244 G255 B249	
9.	10		8,248		R0 G0 B0	

Production Worksheet

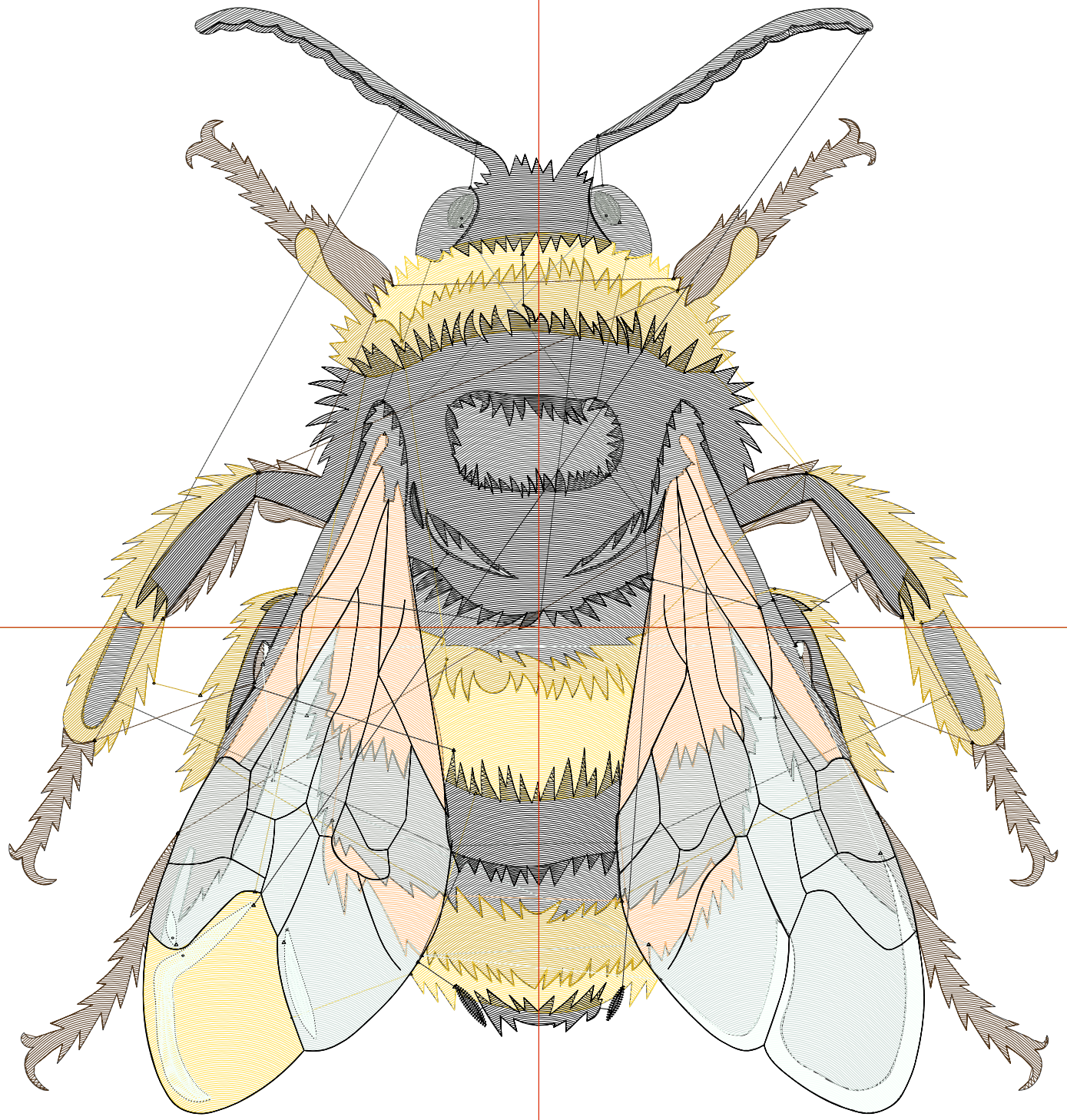
Wilcom EmbroideryStudio - Designing



Design: **7**

Title:

Stitches: 43,069
Height: 7.50 in
Width: 7.10 in
Colors: 9
Colorway: Colorway 1
Zoom: 1:1



Production Worksheet

Wilcom EmbroideryStudio - Designing



Design: **7**

Title:

Stitches: 43,069
 Height: 7.50 in
 Width: 7.10 in
 Colors: 9
 Colorway: Colorway 1
 Zoom: 1:1

Machine format: Tajima
 Color changes: 8
 Stops: 9
 Trims: 61
 Appliqués: 0
 Left: 91.2 mm
 Right: 89.3 mm
 Up: 106.7 mm
 Down: 83.8 mm
 EndX: 0.00 in
 EndY: 0.00 in
 Area 53.27 in²
 Max stitch: 9.5 mm
 Min stitch: 0.0 mm
 Max jump: 7.0 mm
 Total thread: 572.56ft
 Total bobbin: 170.07ft

Stop Sequence:

#	N#	Color	St.	Code	Name	Chart
1.	2		4,952		R57 G59 B57	
2.	4		3,877		R255 G223 B80	
3.	1		5,661		R209 G168 B31	
4.	5		3,883		R82 G54 B27	
5.	6		4,507		R255 G190 B126	
6.	7		3,884		R152 G158 B150	
7.	9		4,887		R202 G219 B213	
8.	8		1,440		R244 G255 B249	
9.	10		9,976		R0 G0 B0	