

Production Worksheet

Wilcom EmbroideryStudio - Designing



Design: **3**

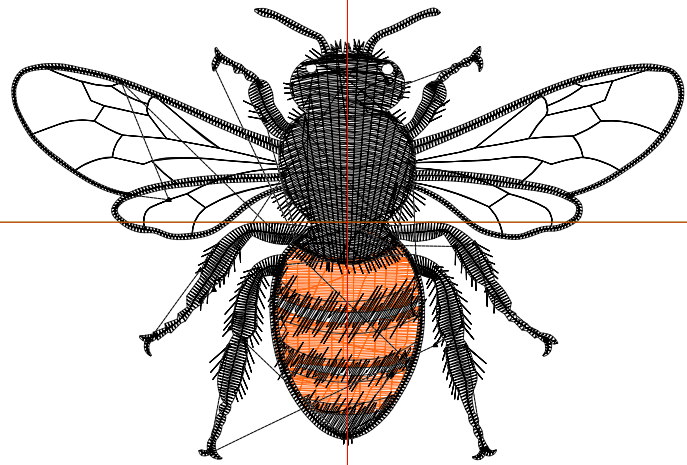
Title:

Stitches: 7,018
Height: 2.35 in
Width: 3.50 in
Colors: 2
Colorway: Colorway 1
Zoom: 1:1

Machine format: Tajima
Color changes: 1
Stops: 2
Trims: 42
Appliqués: 0
Left: 44.4 mm
Right: 44.5 mm
Up: 28.3 mm
Down: 31.4 mm
EndX: 0.00 in
EndY: 0.00 in
Area 8.23 in²
Max stitch: 6.5 mm
Min stitch: 0.0 mm
Max jump: 6.5 mm
Total thread: 97.29ft
Total bobbin: 29.97ft

Stop Sequence:

#	N#	Color	St.	Code	Name	Chart
1.	2		799		R255 G106 B25	
2.	8		6,217	8	Black	Default



Production Worksheet

Wilcom EmbroideryStudio - Designing



Design: **4**

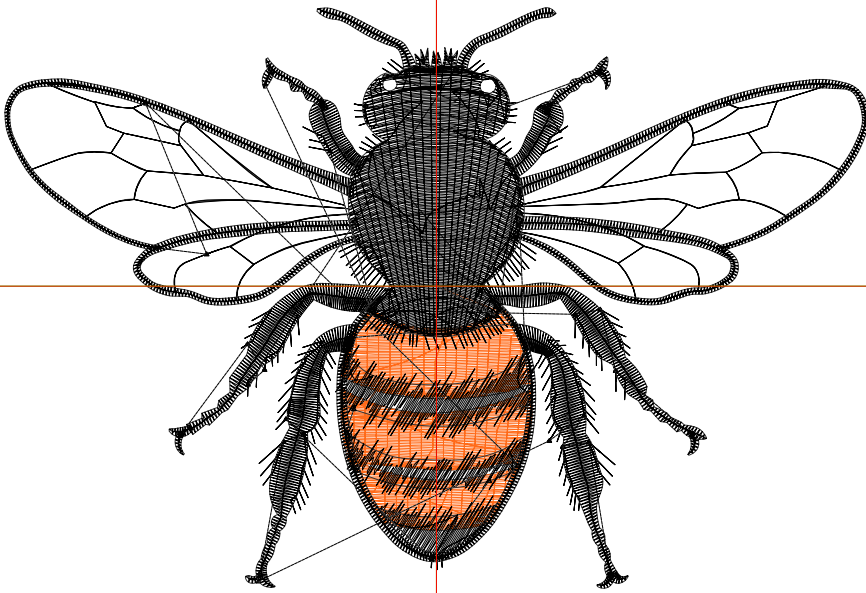
Title:

Stitches: 9,360
 Height: 3.02 in
 Width: 4.50 in
 Colors: 2
 Colorway: Colorway 1
 Zoom: 1:1

Machine format: Tajima
 Color changes: 1
 Stops: 2
 Trims: 43
 Appliqués: 0
 Left: 57.1 mm
 Right: 57.2 mm
 Up: 36.9 mm
 Down: 39.9 mm
 EndX: 0.00 in
 EndY: 0.00 in
 Area 13.60 in²
 Max stitch: 8.7 mm
 Min stitch: 0.2 mm
 Max jump: 7.0 mm
 Total thread: 140.70ft
 Total bobbin: 46.59ft

Stop Sequence:

#	N#	Color	St.	Code	Name	Chart
1.	2		1,192		R255 G106 B25	
2.	8		8,166	8	Black	Default



Production Worksheet

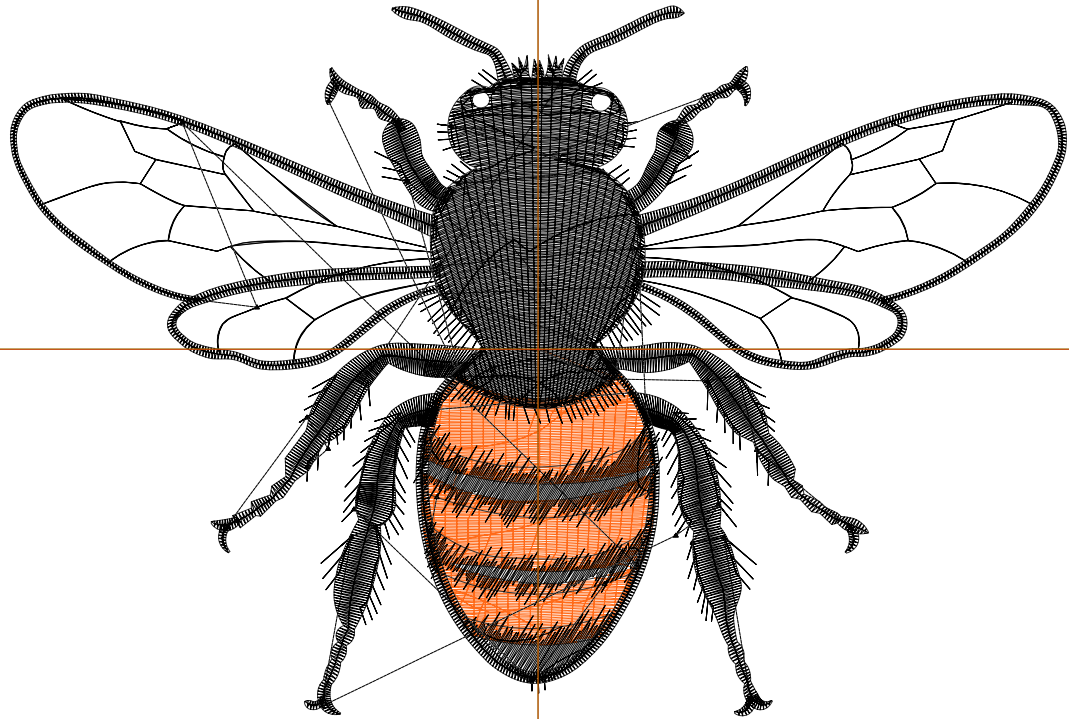
Wilcom EmbroideryStudio - Designing



Design: **5**

Title:

Stitches: 12,092
Height: 3.70 in
Width: 5.50 in
Colors: 2
Colorway: Colorway 1
Zoom: 1:1



Production Worksheet

Wilcom EmbroideryStudio - Designing



Design: **5**

Title:

Stitches: 12,092
 Height: 3.70 in
 Width: 5.50 in
 Colors: 2
 Colorway: Colorway 1
 Zoom: 1:1

Machine format: Tajima
 Color changes: 1
 Stops: 2
 Trims: 44
 Appliqués: 0
 Left: 69.8 mm
 Right: 69.9 mm
 Up: 45.4 mm
 Down: 48.5 mm
 EndX: 0.00 in
 EndY: 0.00 in
 Area 20.33 in²
 Max stitch: 9.1 mm
 Min stitch: 0.2 mm
 Max jump: 6.9 mm
 Total thread: 192.89ft
 Total bobbin: 66.90ft

Stop Sequence:

#	N#	Color	St.	Code	Name	Chart
1.	2		1,665		R255 G106 B25	
2.	8		10,425	8	Black	Default

Production Worksheet

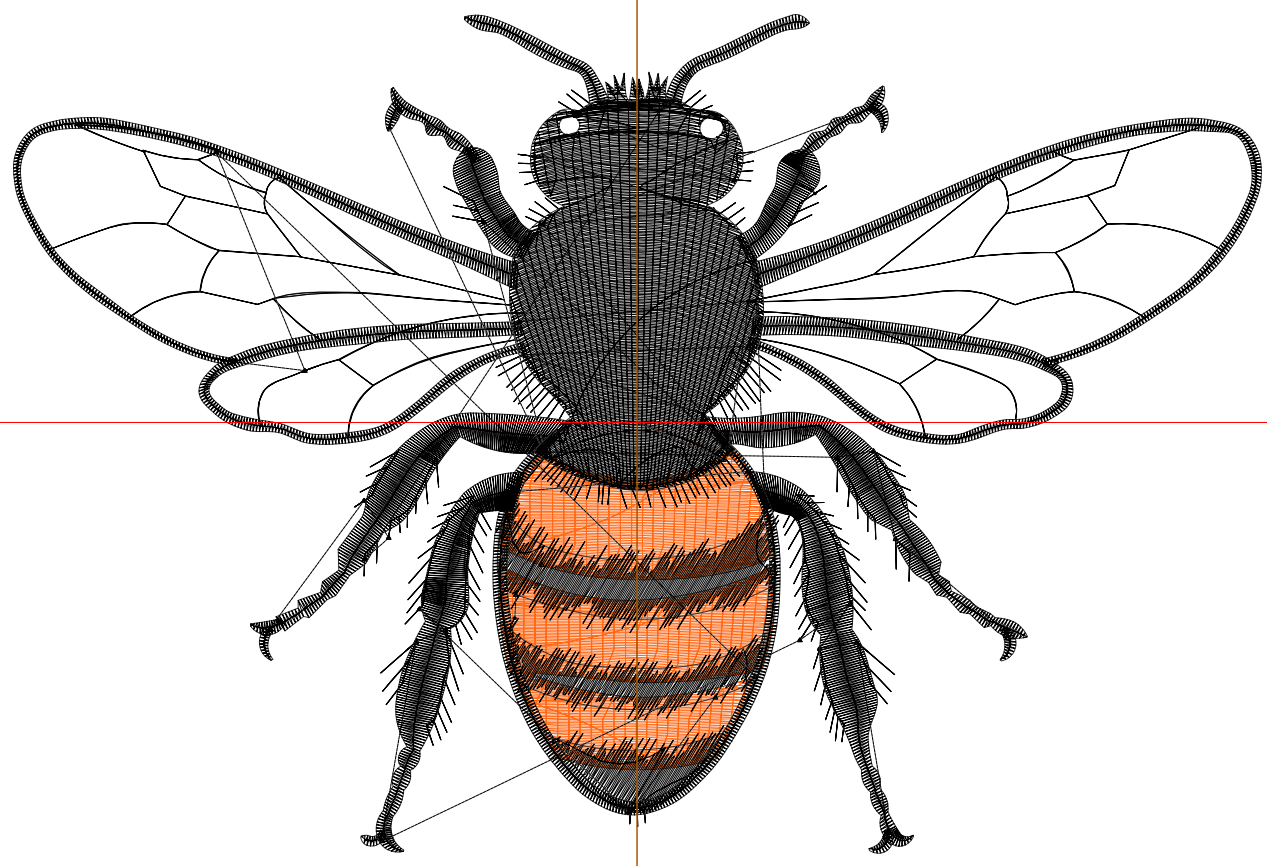
Wilcom EmbroideryStudio - Designing



Design: **6**

Title:

Stitches: 15,090
Height: 4.37 in
Width: 6.50 in
Colors: 2
Colorway: Colorway 1
Zoom: 1:1



Production Worksheet

Wilcom EmbroideryStudio - Designing



Design: **6**

Title:

Stitches: 15,090
 Height: 4.37 in
 Width: 6.50 in
 Colors: 2
 Colorway: Colorway 1
 Zoom: 1:1

Machine format: Tajima
 Color changes: 1
 Stops: 2
 Trims: 44
 Appliqués: 0
 Left: 82.5 mm
 Right: 82.6 mm
 Up: 53.9 mm
 Down: 57.0 mm
 EndX: 0.00 in
 EndY: 0.00 in
 Area 28.39 in²
 Max stitch: 6.9 mm
 Min stitch: 0.2 mm
 Max jump: 6.9 mm
 Total thread: 253.62ft
 Total bobbin: 91.23ft

Stop Sequence:

#	N#	Color	St.	Code	Name	Chart
1.	2		2,188		R255 G106 B25	
2.	8		12,900	8	Black	Default

Production Worksheet

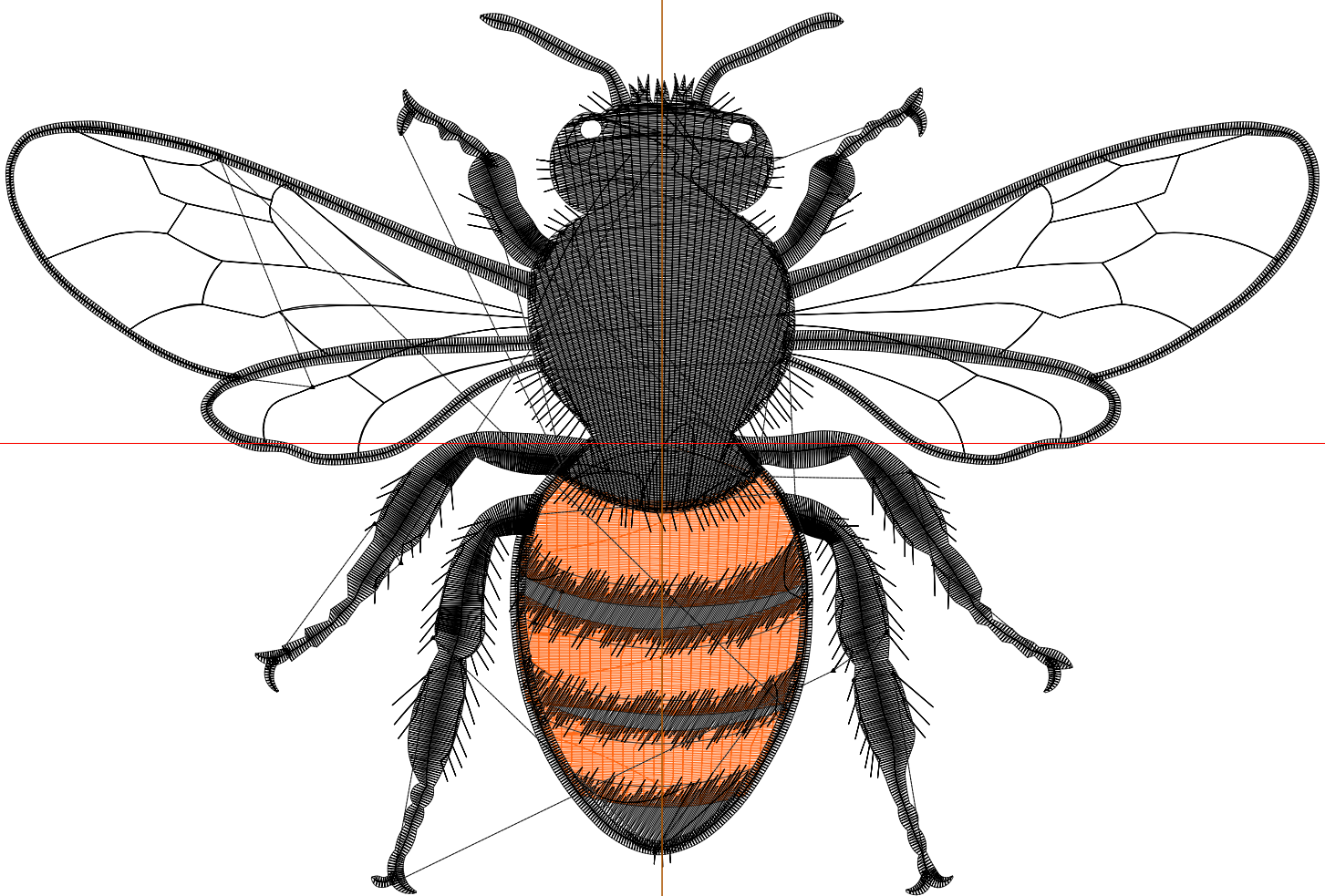
Wilcom EmbroideryStudio - Designing



Design: **7**

Title:

Stitches: 18,366
Height: 5.04 in
Width: 7.50 in
Colors: 2
Colorway: Colorway 1
Zoom: 1:1



Production Worksheet

Wilcom EmbroideryStudio - Designing



Design: **7**

Title:

Stitches: 18,366
 Height: 5.04 in
 Width: 7.50 in
 Colors: 2
 Colorway: Colorway 1
 Zoom: 1:1

Machine format: Tajima
 Color changes: 1
 Stops: 2
 Trims: 45
 Appliqués: 0
 Left: 95.2 mm
 Right: 95.3 mm
 Up: 62.5 mm
 Down: 65.5 mm
 EndX: 0.00 in
 EndY: 0.00 in
 Area 37.80 in²
 Max stitch: 9.6 mm
 Min stitch: 0.3 mm
 Max jump: 7.0 mm
 Total thread: 323.04ft
 Total bobbin: 119.63ft

Stop Sequence:

#	N#	Color	St.	Code	Name	Chart
1.	2		2,800		R255 G106 B25	
2.	8		15,564	8	Black	Default