

# Production Worksheet

Wilcom EmbroideryStudio - Designing



Design: **3**

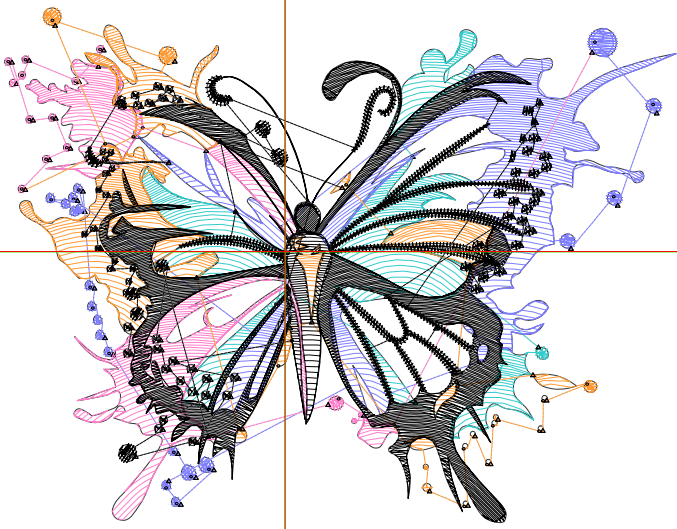
Title:

Stitches: 11,366  
 Height: 2.68 in  
 Width: 3.50 in  
 Colors: 5  
 Colorway: Colorway 1  
 Zoom: 1:1

Machine format: Tajima  
 Color changes: 4  
 Stops: 5  
 Trims: 116  
 Appliqués: 0  
 Left: 37.2 mm  
 Right: 51.8 mm  
 Up: 32.4 mm  
 Down: 35.8 mm  
 EndX: -0.00 in  
 EndY: 0.00 in  
 Area: 9.40 in<sup>2</sup>  
 Max stitch: 7.0 mm  
 Min stitch: 0.0 mm  
 Max jump: 7.0 mm  
 Total thread: 133.07ft  
 Total bobbin: 33.69ft

Stop Sequence:

#	N#	Color	St.	Code	Name	Chart
1.	5		970	5	Aqua	Default
2.	20		1,780	20	Powder Blue	Default
3.	15		1,220	15	Pink	Default
4.	12		1,242	12	Orange	Default
5.	8		6,152	8	Black	Default



# Production Worksheet

Wilcom EmbroideryStudio - Designing



Design: **4**

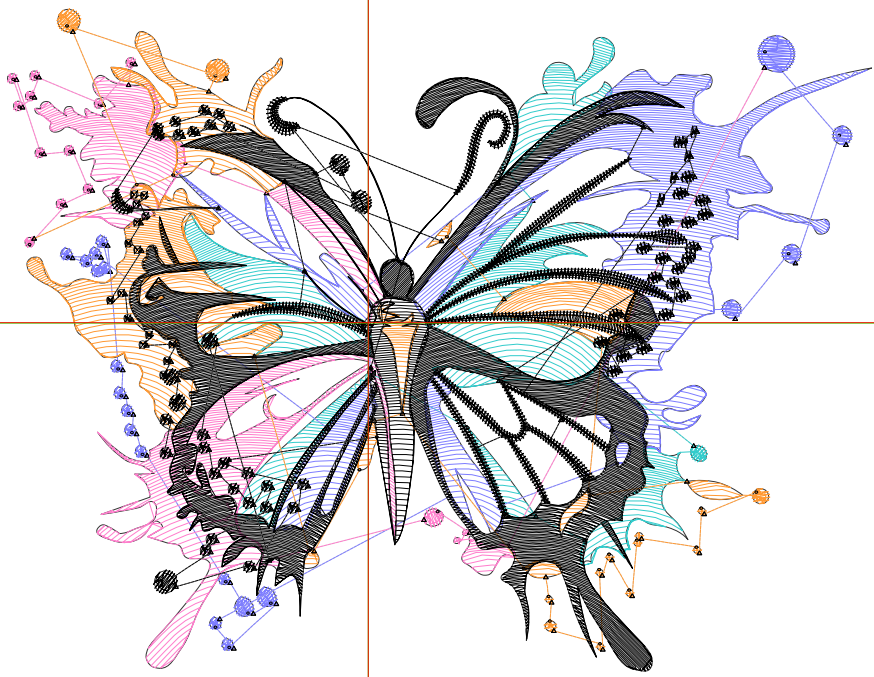
Title:

Stitches: 15,462  
 Height: 3.45 in  
 Width: 4.48 in  
 Colors: 5  
 Colorway: Colorway 1  
 Zoom: 1:1

Machine format: Tajima  
 Color changes: 4  
 Stops: 5  
 Trims: 135  
 Appliqués: 0  
 Left: 47.8 mm  
 Right: 66.0 mm  
 Up: 41.6 mm  
 Down: 46.0 mm  
 EndX: 0.00 in  
 EndY: 0.00 in  
 Area: 15.46 in<sup>2</sup>  
 Max stitch: 6.9 mm  
 Min stitch: 0.0 mm  
 Max jump: 6.9 mm  
 Total thread: 188.43ft  
 Total bobbin: 50.57ft

Stop Sequence:

#	N#	Color	St.	Code	Name	Chart
1.	5		1,302	5	Aqua	Default
2.	20		2,326	20	Powder Blue	Default
3.	15		1,682	15	Pink	Default
4.	12		1,733	12	Orange	Default
5.	8		8,417	8	Black	Default



# Production Worksheet

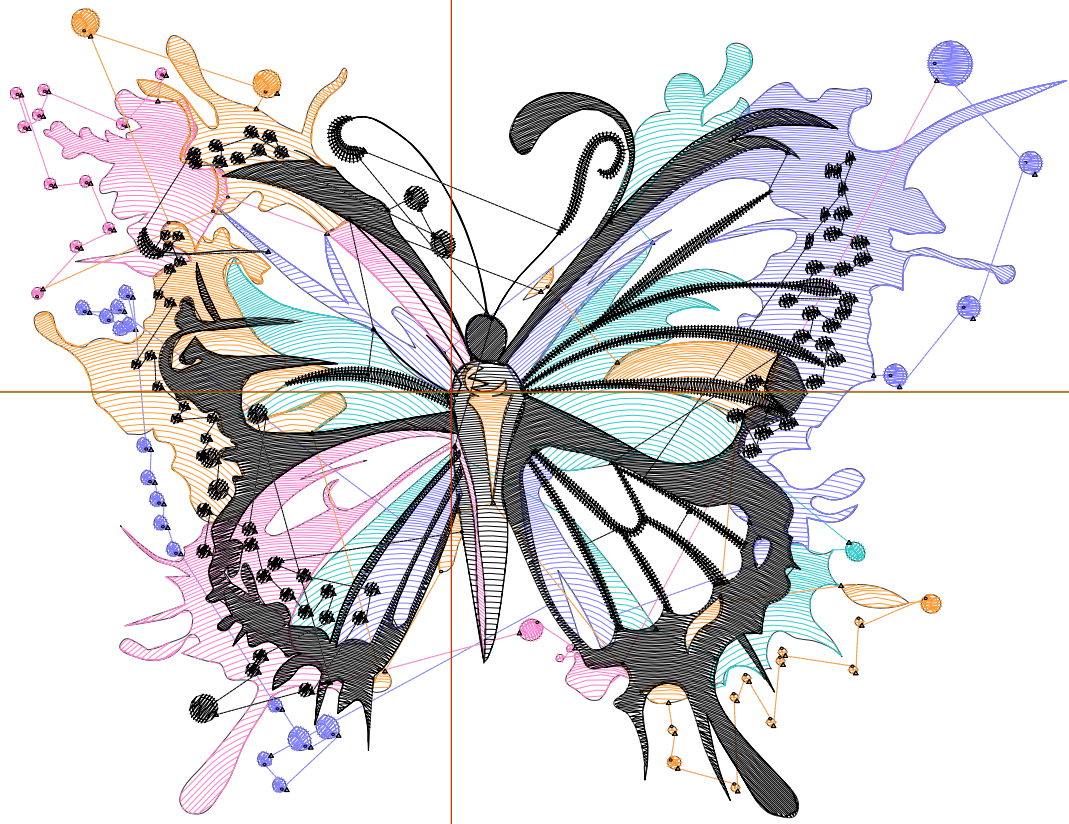
Wilcom EmbroideryStudio - Designing



Design: **5**

Title:

Stitches: 20,015  
Height: 4.22 in  
Width: 5.50 in  
Colors: 5  
Colorway: Colorway 1  
Zoom: 1:1



# Production Worksheet

Wilcom EmbroideryStudio - Designing



Design: **5**

Title:

Stitches: 20,015  
 Height: 4.22 in  
 Width: 5.50 in  
 Colors: 5  
 Colorway: Colorway 1  
 Zoom: 1:1

Machine format: Tajima  
 Color changes: 4  
 Stops: 5  
 Trims: 146  
 Appliqués: 0  
 Left: 58.3 mm  
 Right: 81.4 mm  
 Up: 50.8 mm  
 Down: 56.3 mm  
 EndX: 0.00 in  
 EndY: 0.00 in  
 Area 23.20 in<sup>2</sup>  
 Max stitch: 6.5 mm  
 Min stitch: 0.0 mm  
 Max jump: 6.5 mm  
 Total thread: 253.76ft  
 Total bobbin: 71.58ft

Stop Sequence:

#	N#	Color	St.	Code	Name	Chart
1.	5		1,722	5	Aqua	Default
2.	20		3,055	20	Powder Blue	Default
3.	15		2,129	15	Pink	Default
4.	12		2,177	12	Orange	Default
5.	8		10,930	8	Black	Default

# Production Worksheet

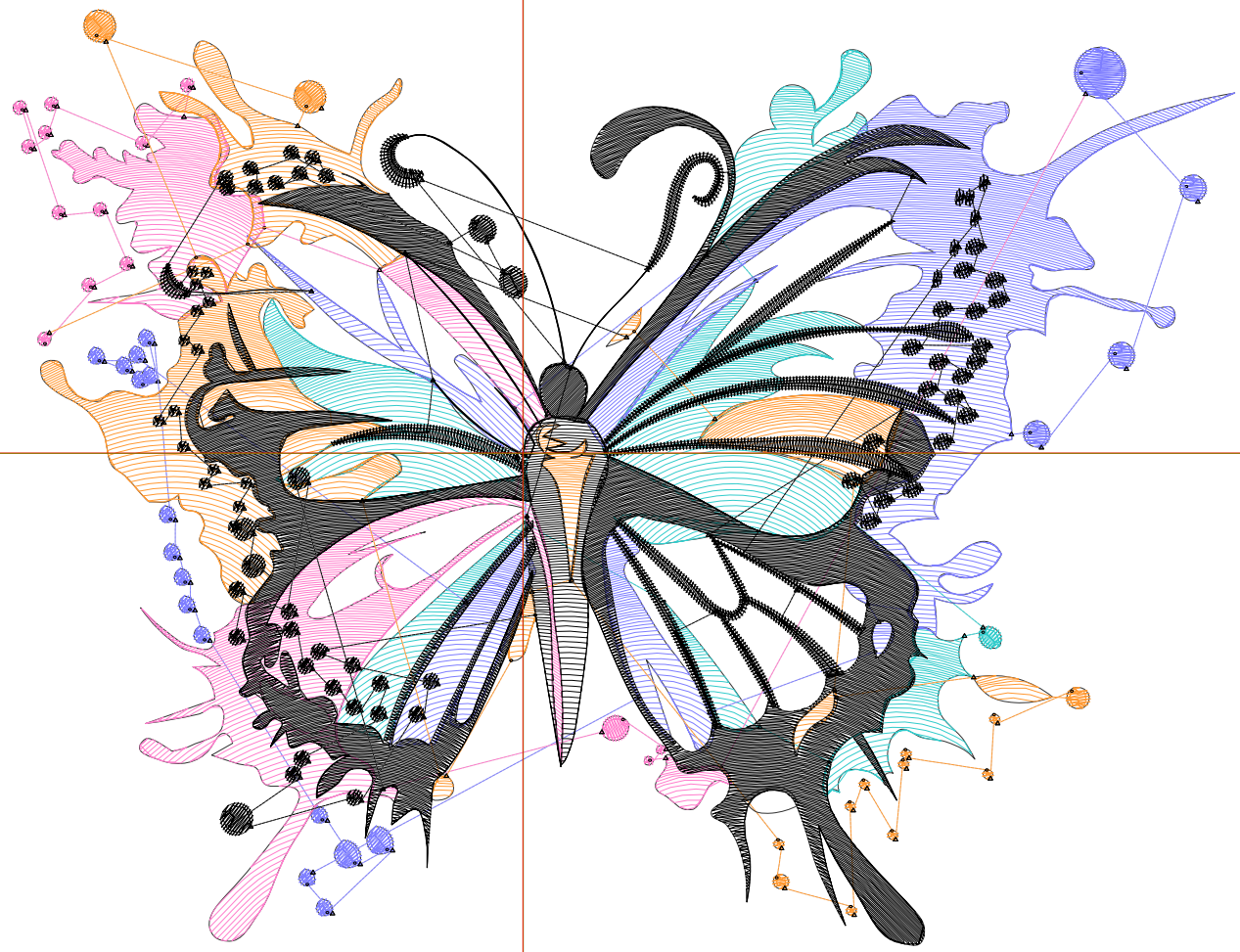
Wilcom EmbroideryStudio - Designing



Design: **6**

Title:

Stitches: 24,951  
Height: 4.98 in  
Width: 6.50 in  
Colors: 5  
Colorway: Colorway 1  
Zoom: 1:1



# Production Worksheet

Wilcom EmbroideryStudio - Designing



Design: **6**

Title:

Stitches: 24,951  
 Height: 4.98 in  
 Width: 6.50 in  
 Colors: 5  
 Colorway: Colorway 1  
 Zoom: 1:1

Machine format: Tajima  
 Color changes: 4  
 Stops: 5  
 Trims: 152  
 Appliqués: 0  
 Left: 69.0 mm  
 Right: 96.2 mm  
 Up: 60.0 mm  
 Down: 66.5 mm  
 EndX: -0.00 in  
 EndY: 0.00 in  
 Area 32.38 in<sup>2</sup>  
 Max stitch: 7.0 mm  
 Min stitch: 0.0 mm  
 Max jump: 6.9 mm  
 Total thread: 326.97ft  
 Total bobbin: 95.77ft

Stop Sequence:

#	N#	Color	St.	Code	Name	Chart
1.	5		2,247	5	Aqua	Default
2.	20		3,776	20	Powder Blue	Default
3.	15		2,727	15	Pink	Default
4.	12		2,748	12	Orange	Default
5.	8		13,451	8	Black	Default

# Production Worksheet

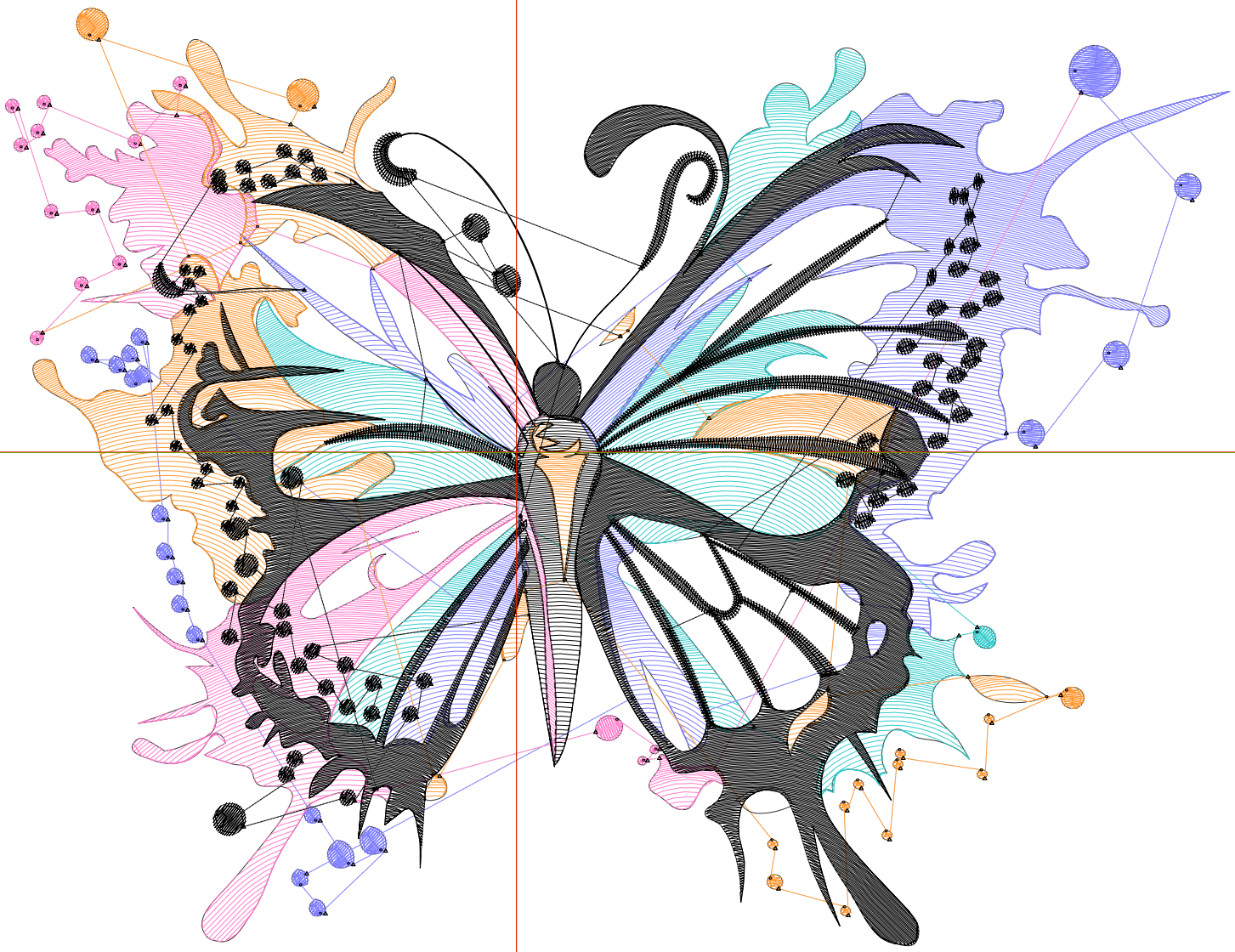
Wilcom EmbroideryStudio - Designing



Design: **7**

Title:

Stitches: 30,342  
Height: 5.75 in  
Width: 7.50 in  
Colors: 5  
Colorway: Colorway 1  
Zoom: 1:1



# Production Worksheet

Wilcom EmbroideryStudio - Designing



Design: **7**

Title:

Stitches: 30,342  
 Height: 5.75 in  
 Width: 7.50 in  
 Colors: 5  
 Colorway: Colorway 1  
 Zoom: 1:1

Machine format: Tajima  
 Color changes: 4  
 Stops: 5  
 Trims: 154  
 Appliqués: 0  
 Left: 79.6 mm  
 Right: 111.0 mm  
 Up: 69.2 mm  
 Down: 76.7 mm  
 EndX: -0.00 in  
 EndY: 0.00 in  
 Area 43.11 in<sup>2</sup>  
 Max stitch: 7.0 mm  
 Min stitch: 0.0 mm  
 Max jump: 7.0 mm  
 Total thread: 410.91ft  
 Total bobbin: 124.55ft

Stop Sequence:

#	N#	Color	St.	Code	Name	Chart
1.	5		2,817	5	Aqua	Default
2.	20		4,652	20	Powder Blue	Default
3.	15		3,343	15	Pink	Default
4.	12		3,314	12	Orange	Default
5.	8		16,214	8	Black	Default