

# Production Worksheet

Wilcom EmbroideryStudio - Designing



Design: **4**

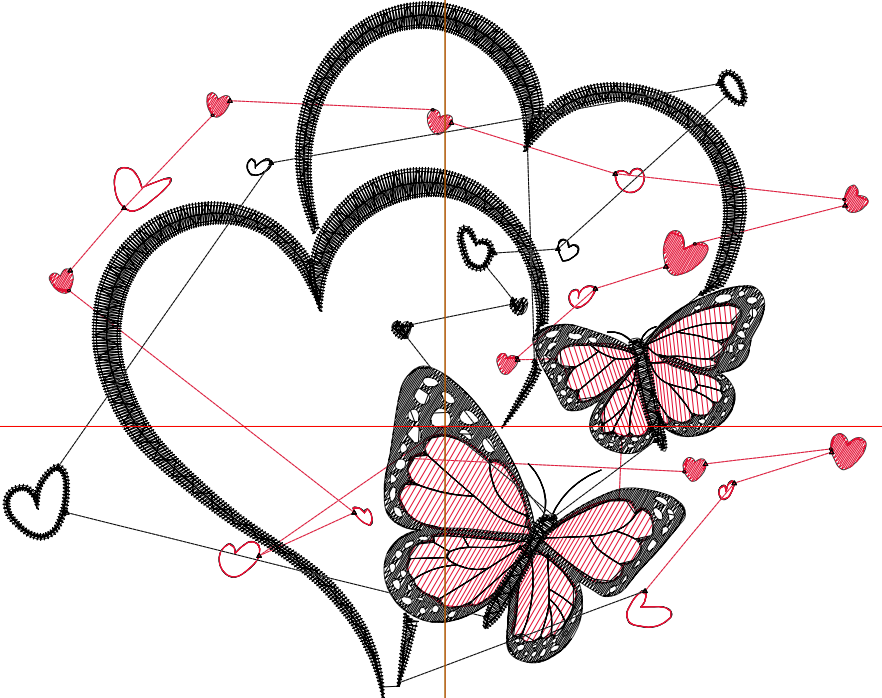
Title:

Stitches: 7,962  
 Height: 3.63 in  
 Width: 4.51 in  
 Colors: 2  
 Colorway: Colorway 1  
 Zoom: 1:1

Machine format: Tajima  
 Color changes: 1  
 Stops: 2  
 Trims: 37  
 Appliqués: 0  
 Left: 58.5 mm  
 Right: 56.0 mm  
 Up: 56.2 mm  
 Down: 36.0 mm  
 EndX: 0.00 in  
 EndY: 0.00 in  
 Area: 16.36 in<sup>2</sup>  
 Max stitch: 6.9 mm  
 Min stitch: 0.0 mm  
 Max jump: 6.9 mm  
 Total thread: 107.02ft  
 Total bobbin: 32.07ft

Stop Sequence:

| #  | N# | Color  | St.   | Code | Name         | Chart   |
|----|----|--|-------|------|--------------|---------|
| 1. | 1  | <span style="display:inline-block; width:15px; height:15px; background-color:red;"></span>   | 1,504 |      | R227 G16 B51 |         |
| 2. | 8  | <span style="display:inline-block; width:15px; height:15px; background-color:black;"></span> | 6,456 | 8    | Black        | Default |



# Production Worksheet

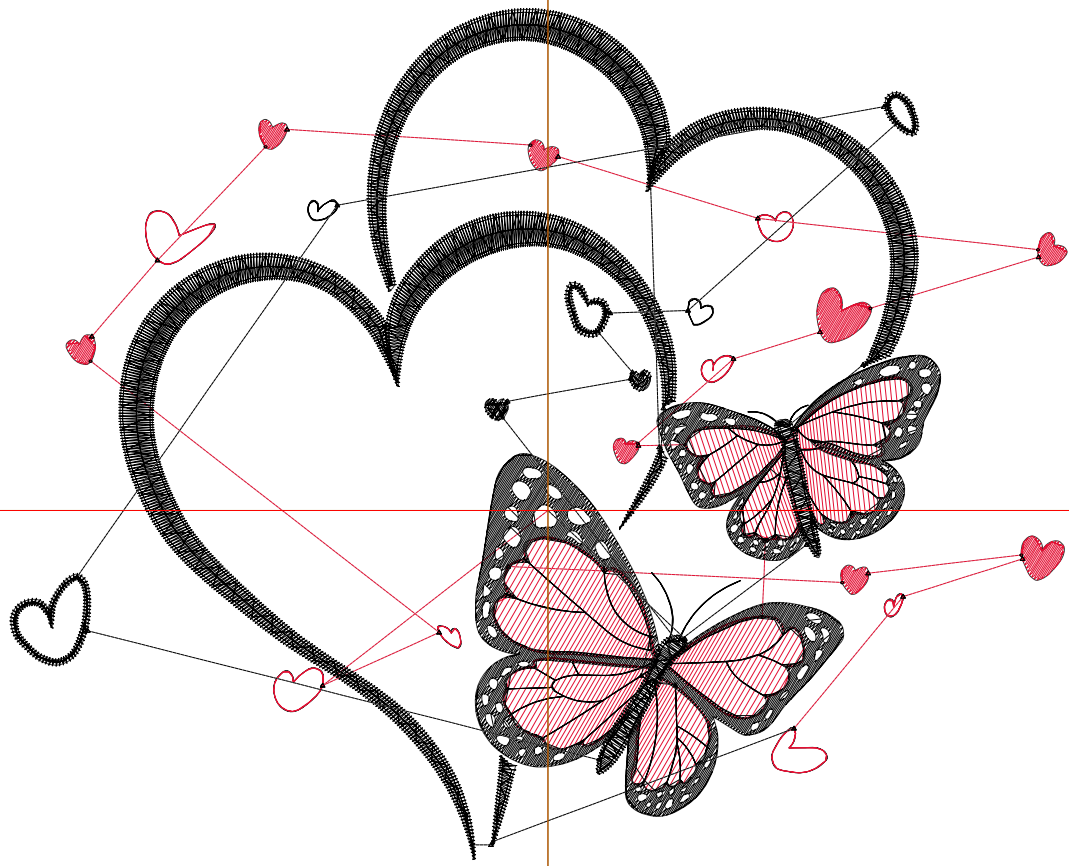
Wilcom EmbroideryStudio - Designing



Design: **5**

Title:

Stitches: 10,089  
Height: 4.43 in  
Width: 5.51 in  
Colors: 2  
Colorway: Colorway 1  
Zoom: 1:1



# Production Worksheet

Wilcom EmbroideryStudio - Designing



Design: **5**

Title:

Stitches: 10,089  
 Height: 4.43 in  
 Width: 5.51 in  
 Colors: 2  
 Colorway: Colorway 1  
 Zoom: 1:1

Machine format: Tajima  
 Color changes: 1  
 Stops: 2  
 Trims: 40  
 Appliqués: 0  
 Left: 71.2 mm  
 Right: 68.7 mm  
 Up: 66.4 mm  
 Down: 46.2 mm  
 EndX: 0.00 in  
 EndY: 0.00 in  
 Area 24.41 in<sup>2</sup>  
 Max stitch: 6.9 mm  
 Min stitch: 0.0 mm  
 Max jump: 6.9 mm  
 Total thread: 144.08ft  
 Total bobbin: 45.76ft

Stop Sequence:

| #  | N# | Color | St.   | Code | Name         | Chart   |
|----|----|-------|-------|------|--------------|---------|
| 1. | 1  |       | 1,925 |      | R227 G16 B51 |         |
| 2. | 8  |       | 8,162 | 8    | Black        | Default |

# Production Worksheet

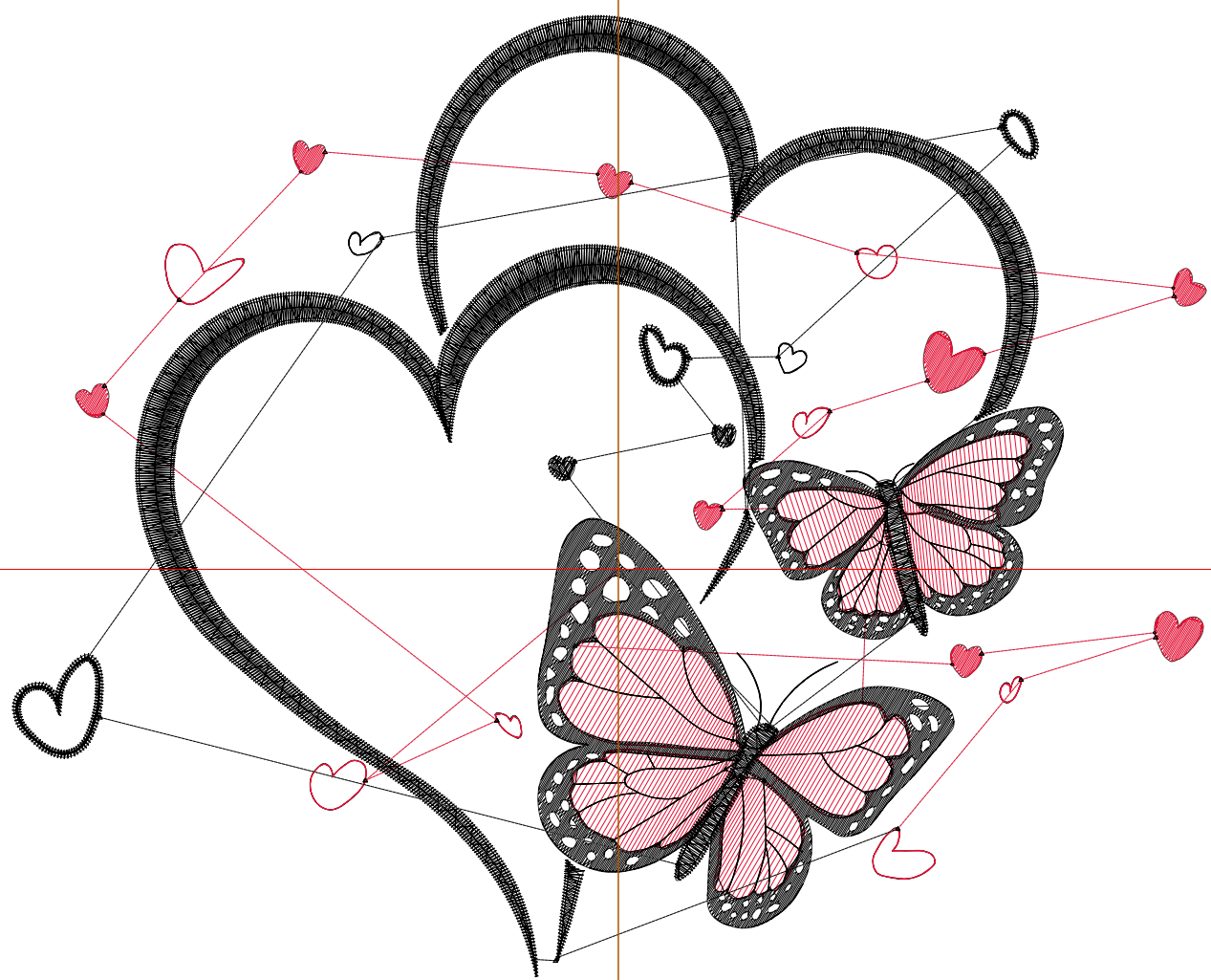
Wilcom EmbroideryStudio - Designing



Design: **6**

Title:

Stitches: 12,324  
Height: 5.24 in  
Width: 6.51 in  
Colors: 2  
Colorway: Colorway 1  
Zoom: 1:1



# Production Worksheet

Wilcom EmbroideryStudio - Designing



Design: **6**

Title:

Stitches: 12,324  
 Height: 5.24 in  
 Width: 6.51 in  
 Colors: 2  
 Colorway: Colorway 1  
 Zoom: 1:1

Machine format: Tajima  
 Color changes: 1  
 Stops: 2  
 Trims: 42  
 Appliqués: 0  
 Left: 83.9 mm  
 Right: 81.3 mm  
 Up: 76.7 mm  
 Down: 56.4 mm  
 EndX: 0.00 in  
 EndY: 0.00 in  
 Area 34.08 in<sup>2</sup>  
 Max stitch: 7.0 mm  
 Min stitch: 0.0 mm  
 Max jump: 7.0 mm  
 Total thread: 185.71ft  
 Total bobbin: 61.74ft

Stop Sequence:

| #  | N# | Color | St.   | Code | Name         | Chart   |
|----|----|-------|-------|------|--------------|---------|
| 1. | 1  |       | 2,361 |      | R227 G16 B51 |         |
| 2. | 8  |       | 9,961 | 8    | Black        | Default |

# Production Worksheet

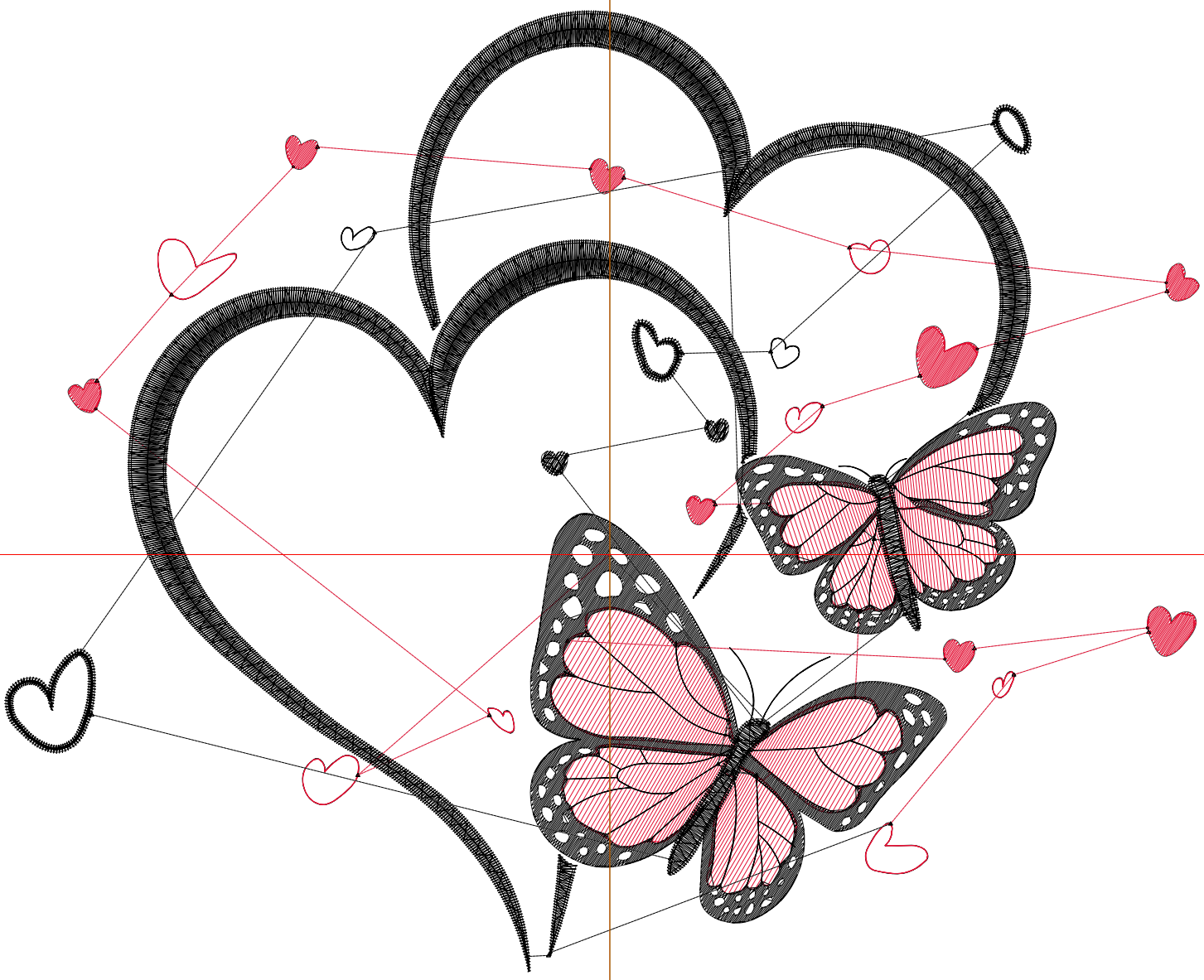
Wilcom EmbroideryStudio - Designing



Design: **7**

Title:

Stitches: 14,734  
Height: 6.04 in  
Width: 7.51 in  
Colors: 2  
Colorway: Colorway 1  
Zoom: 1:1



# Production Worksheet

Wilcom EmbroideryStudio - Designing



Design: **7**

Title:

Stitches: 14,734  
 Height: 6.04 in  
 Width: 7.51 in  
 Colors: 2  
 Colorway: Colorway 1  
 Zoom: 1:1

Machine format: Tajima  
 Color changes: 1  
 Stops: 2  
 Trims: 46  
 Appliqués: 0  
 Left: 96.6 mm  
 Right: 94.1 mm  
 Up: 86.9 mm  
 Down: 66.6 mm  
 EndX: 0.00 in  
 EndY: 0.00 in  
 Area 45.36 in<sup>2</sup>  
 Max stitch: 7.0 mm  
 Min stitch: 0.0 mm  
 Max jump: 7.0 mm  
 Total thread: 232.92ft  
 Total bobbin: 80.35ft

Stop Sequence:

| #  | N# | Color | St.    | Code | Name         | Chart   |
|----|----|-------|--------|------|--------------|---------|
| 1. | 1  |       | 2,859  |      | R227 G16 B51 |         |
| 2. | 8  |       | 11,873 | 8    | Black        | Default |