

Production Worksheet

Wilcom EmbroideryStudio - Designing



Design: **3**

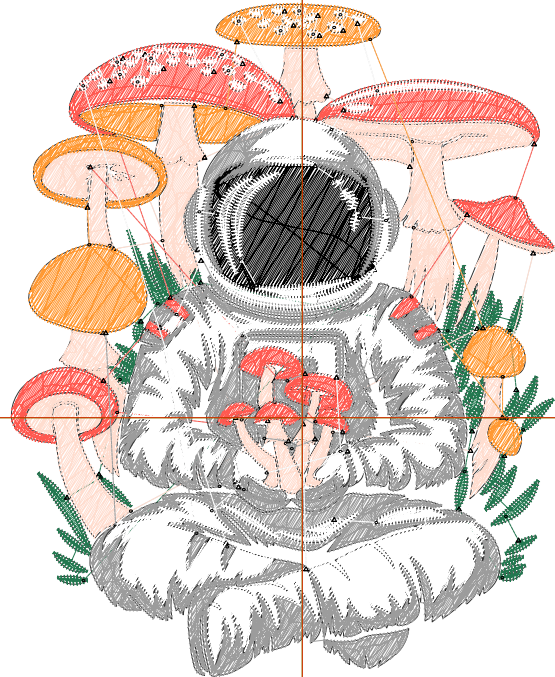
Title:

Stitches: 27,289
 Height: 3.51 in
 Width: 2.83 in
 Colors: 7
 Colorway: Colorway 1
 Zoom: 1:1

Machine format: Tajima
 Color changes: 6
 Stops: 7
 Trims: 74
 Appliqués: 0
 Left: 38.5 mm
 Right: 33.4 mm
 Up: 54.8 mm
 Down: 34.3 mm
 EndX: 0.00 in
 EndY: 0.00 in
 Area: 9.93 in²
 Max stitch: 11.6 mm
 Min stitch: 0.0 mm
 Max jump: 6.8 mm
 Total thread: 350.79ft
 Total bobbin: 100.40ft

Stop Sequence:

#	N#	Color	St.	Code	Name	Chart
1.	8		890	8	Black	Default
2.	2		1,587		R35 G120 B80	
3.	1		3,962		R255 G221 B207	
4.	4		2,275		R255 G89 B80	
5.	12		1,527	12	Orange	Default
6.	3		9,739		R156 G156 B156	
7.	9		7,307	9	White	Default



Production Worksheet

Wilcom EmbroideryStudio - Designing



Design: **4**

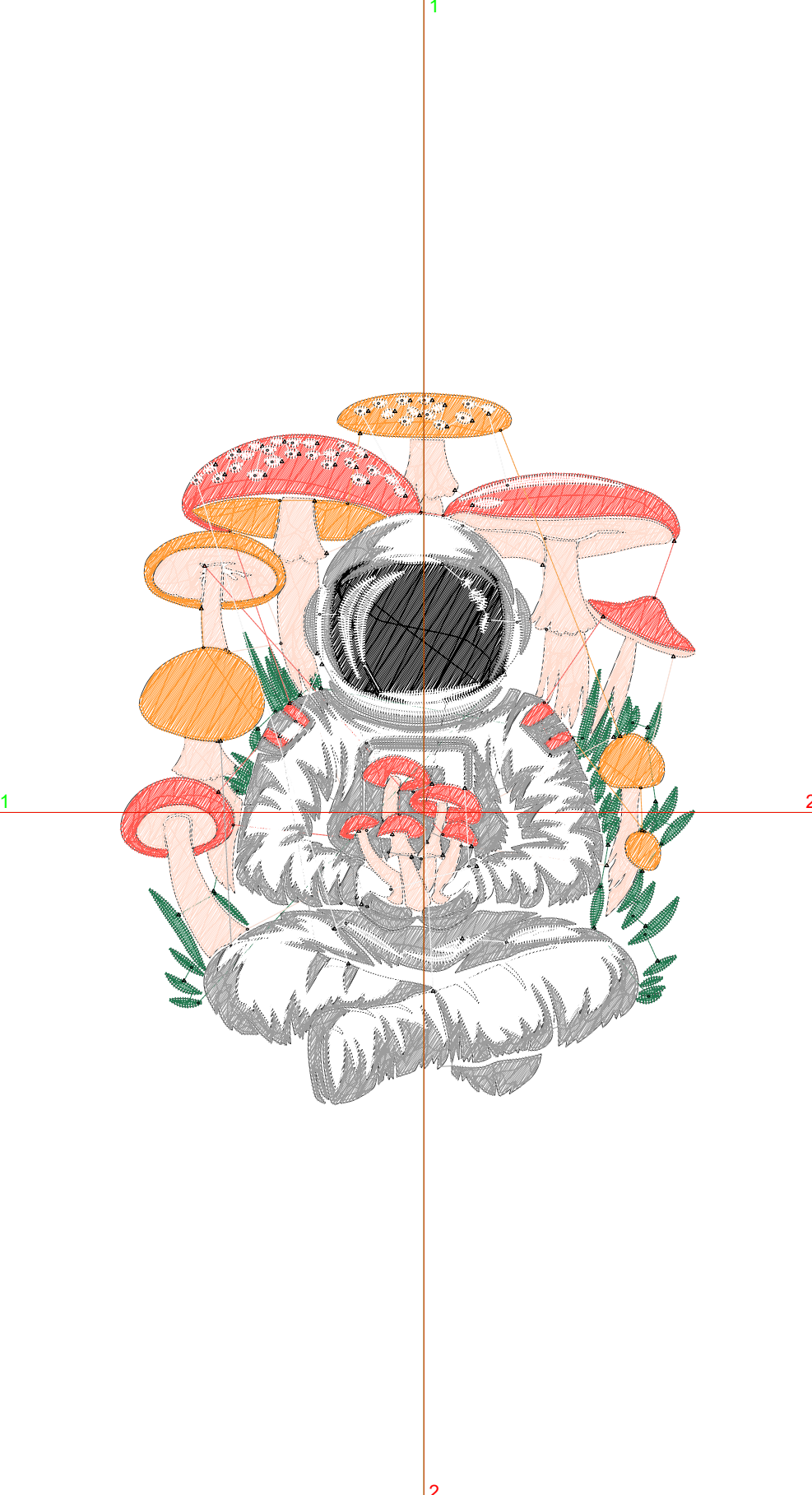
Title:

Stitches: 35,990
 Height: 4.51 in
 Width: 3.64 in
 Colors: 7
 Colorway: Colorway 1
 Zoom: 1:1

Machine format: Tajima
 Color changes: 6
 Stops: 7
 Trims: 92
 Appliqués: 0
 Left: 48.8 mm
 Right: 43.6 mm
 Up: 67.5 mm
 Down: 47.0 mm
 EndX: 0.00 in
 EndY: 0.00 in
 Area: 16.41 in²
 Max stitch: 9.1 mm
 Min stitch: 0.0 mm
 Max jump: 7.0 mm
 Total thread: 495.70ft
 Total bobbin: 152.44ft

Stop Sequence:

#	N#	Color	St.	Code	Name	Chart
1.	8		1,285	8	Black	Default
2.	2		1,991		R35 G120 B80	
3.	1		5,210		R255 G221 B207	
4.	4		3,067		R255 G89 B80	
5.	12		2,114	12	Orange	Default
6.	3		12,858		R156 G156 B156	
7.	9		9,463	9	White	Default



Production Worksheet

Wilcom EmbroideryStudio - Designing



Design: **5**

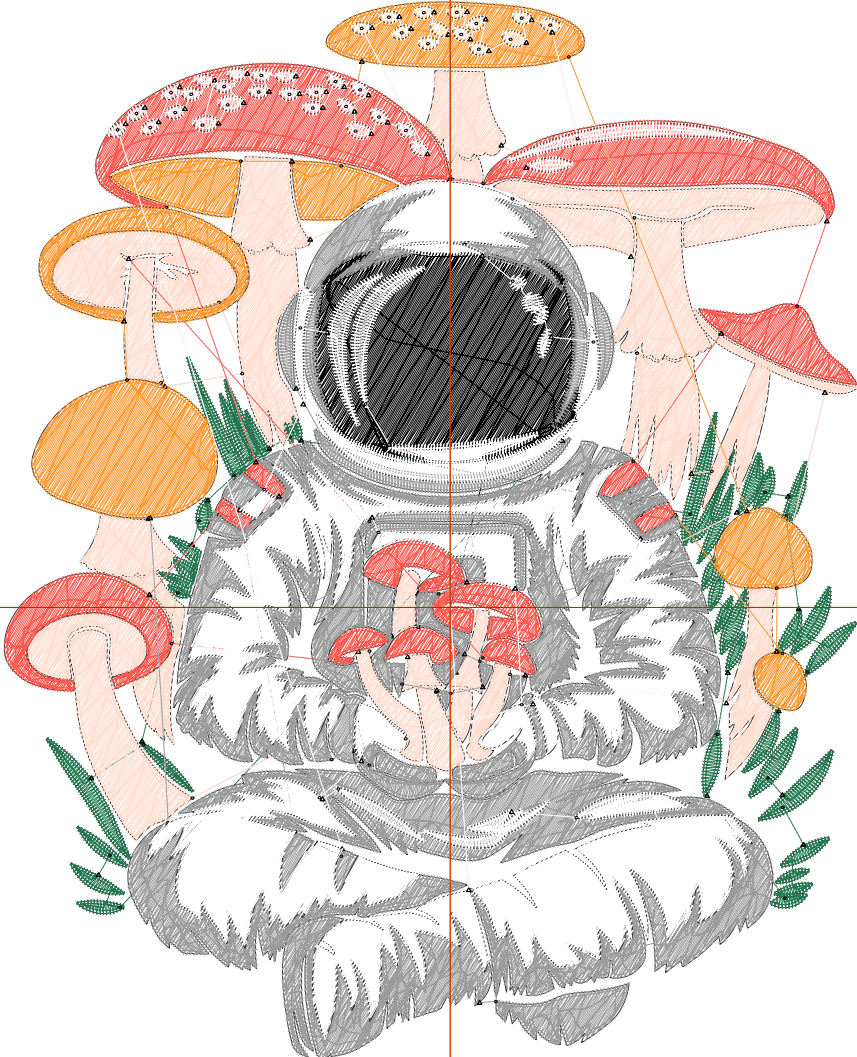
Title:

Stitches: 45,221
 Height: 5.51 in
 Width: 4.45 in
 Colors: 7
 Colorway: Colorway 1
 Zoom: 1:1

Machine format: Tajima
 Color changes: 6
 Stops: 7
 Trims: 107
 Appliqués: 0
 Left: 59.1 mm
 Right: 53.9 mm
 Up: 80.2 mm
 Down: 59.7 mm
 EndX: 0.00 in
 EndY: 0.00 in
 Area: 24.49 in²
 Max stitch: 11.5 mm
 Min stitch: 0.0 mm
 Max jump: 6.8 mm
 Total thread: 659.79ft
 Total bobbin: 213.79ft

Stop Sequence:

#	N#	Color	St.	Code	Name	Chart
1.	8	Black	1,759	8	Black	Default
2.	2	Green	2,382		R35 G120 B80	
3.	1	Light Pink	6,680		R255 G221 B207	
4.	4	Red	3,988		R255 G89 B80	
5.	12	Orange	2,798	12	Orange	Default
6.	3	Grey	15,934		R156 G156 B156	
7.	9	White	11,678	9	White	Default



Production Worksheet

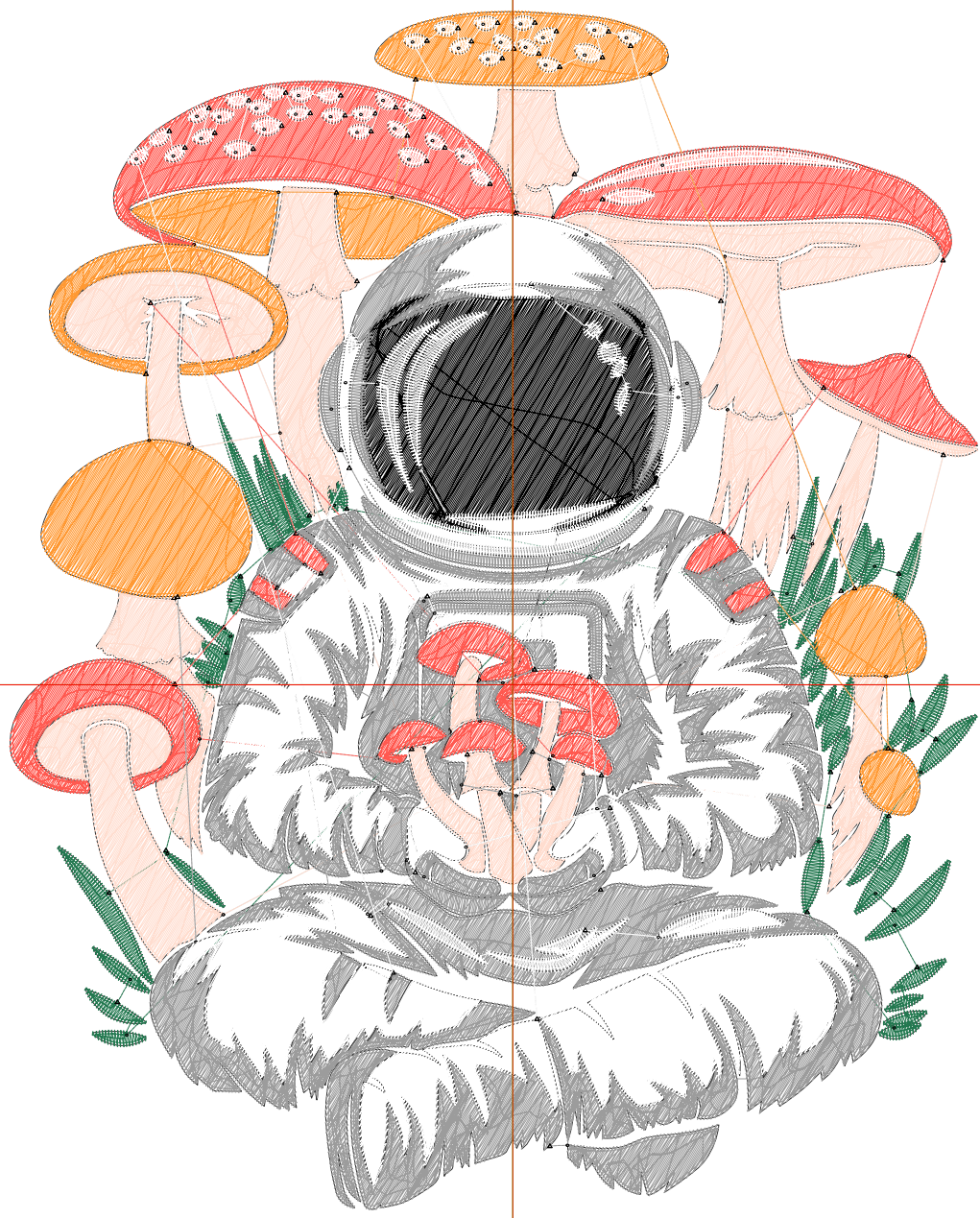
Wilcom EmbroideryStudio - Designing



Design: **6**

Title:

Stitches: 55,219
Height: 6.51 in
Width: 5.25 in
Colors: 7
Colorway: Colorway 1
Zoom: 1:1



Production Worksheet

Wilcom EmbroideryStudio - Designing



Design: **6**

Title:

Stitches: 55,219
 Height: 6.51 in
 Width: 5.25 in
 Colors: 7
 Colorway: Colorway 1
 Zoom: 1:1

Machine format: Tajima
 Color changes: 6
 Stops: 7
 Trims: 112
 Appliqués: 0
 Left: 69.3 mm
 Right: 64.1 mm
 Up: 92.9 mm
 Down: 72.4 mm
 EndX: 0.00 in
 EndY: 0.00 in
 Area 34.19 in²
 Max stitch: 8.8 mm
 Min stitch: 0.0 mm
 Max jump: 7.0 mm
 Total thread: 846.90ft
 Total bobbin: 285.79ft

Stop Sequence:

#	N#	Color	St.	Code	Name	Chart
1.	8		2,310	8	Black	Default
2.	2		2,782		R35 G120 B80	
3.	1		8,251		R255 G221 B207	
4.	4		4,971		R255 G89 B80	
5.	12		3,560	12	Orange	Default
6.	3		19,239		R156 G156 B156	
7.	9		14,104	9	White	Default

Production Worksheet

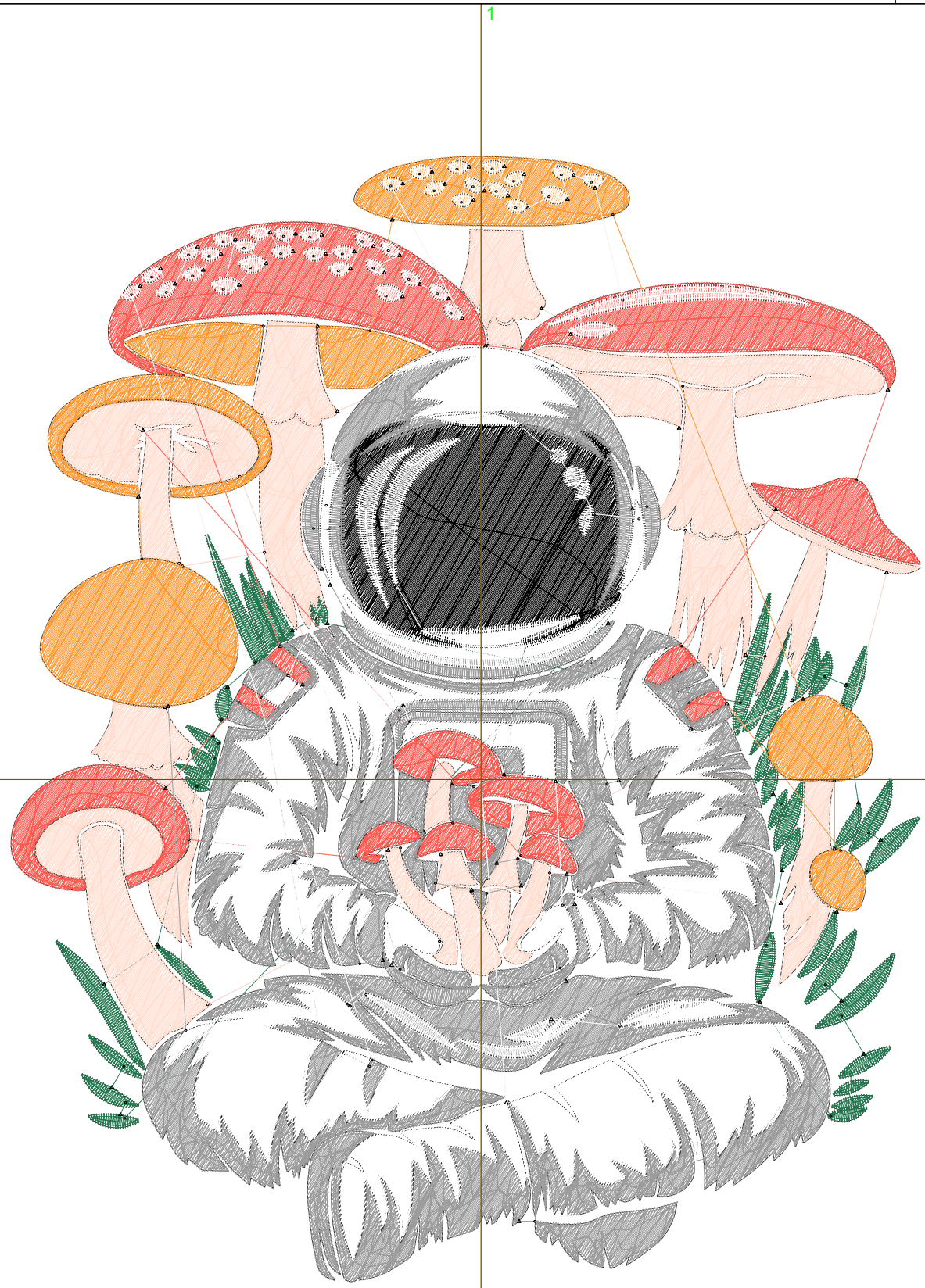
Wilcom EmbroideryStudio - Designing



Design: **7**

Title:

Stitches: 65,711
Height: 7.51 in
Width: 6.06 in
Colors: 7
Colorway: Colorway 1
Zoom: 1:1



Production Worksheet

Wilcom EmbroideryStudio - Designing



Design: **7**

Title:

Stitches: 65,711
 Height: 7.51 in
 Width: 6.06 in
 Colors: 7
 Colorway: Colorway 1
 Zoom: 1:1

Machine format: Tajima
 Color changes: 6
 Stops: 7
 Trims: 120
 Appliqués: 0
 Left: 79.6 mm
 Right: 74.4 mm
 Up: 105.6 mm
 Down: 85.1 mm
 EndX: 0.00 in
 EndY: 0.00 in
 Area 45.52 in²
 Max stitch: 8.6 mm
 Min stitch: 0.0 mm
 Max jump: 7.0 mm
 Total thread: 1052.91ft
 Total bobbin: 367.07ft

Stop Sequence:

#	N#	Color	St.	Code	Name	Chart
1.	8		2,947	8	Black	Default
2.	2		3,176		R35 G120 B80	
3.	1		9,990		R255 G221 B207	
4.	4		6,073		R255 G89 B80	
5.	12		4,373	12	Orange	Default
6.	3		22,603		R156 G156 B156	
7.	9		16,547	9	White	Default