

Approval Sheet

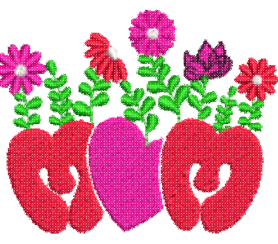
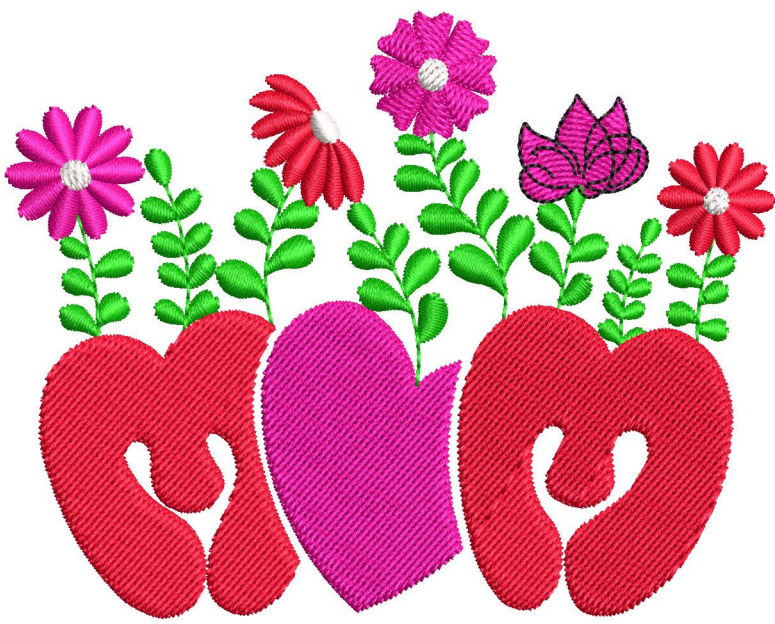
Wilcom EmbroideryStudio - Designing

4 INCH

Design: **4 inch**

Title:

Height: 3.15 in
Width: 4.00 in
Colors: 5
Colorway: Colorway 1
Zoom: 1:1



Product type:
Product:
Total qty:
Product colors:
Position:

Terms and Conditions:

Approved By:

Date:

Production Worksheet

Wilcom EmbroideryStudio - Designing

*** 4 INCH ***


Design: **4 inch**

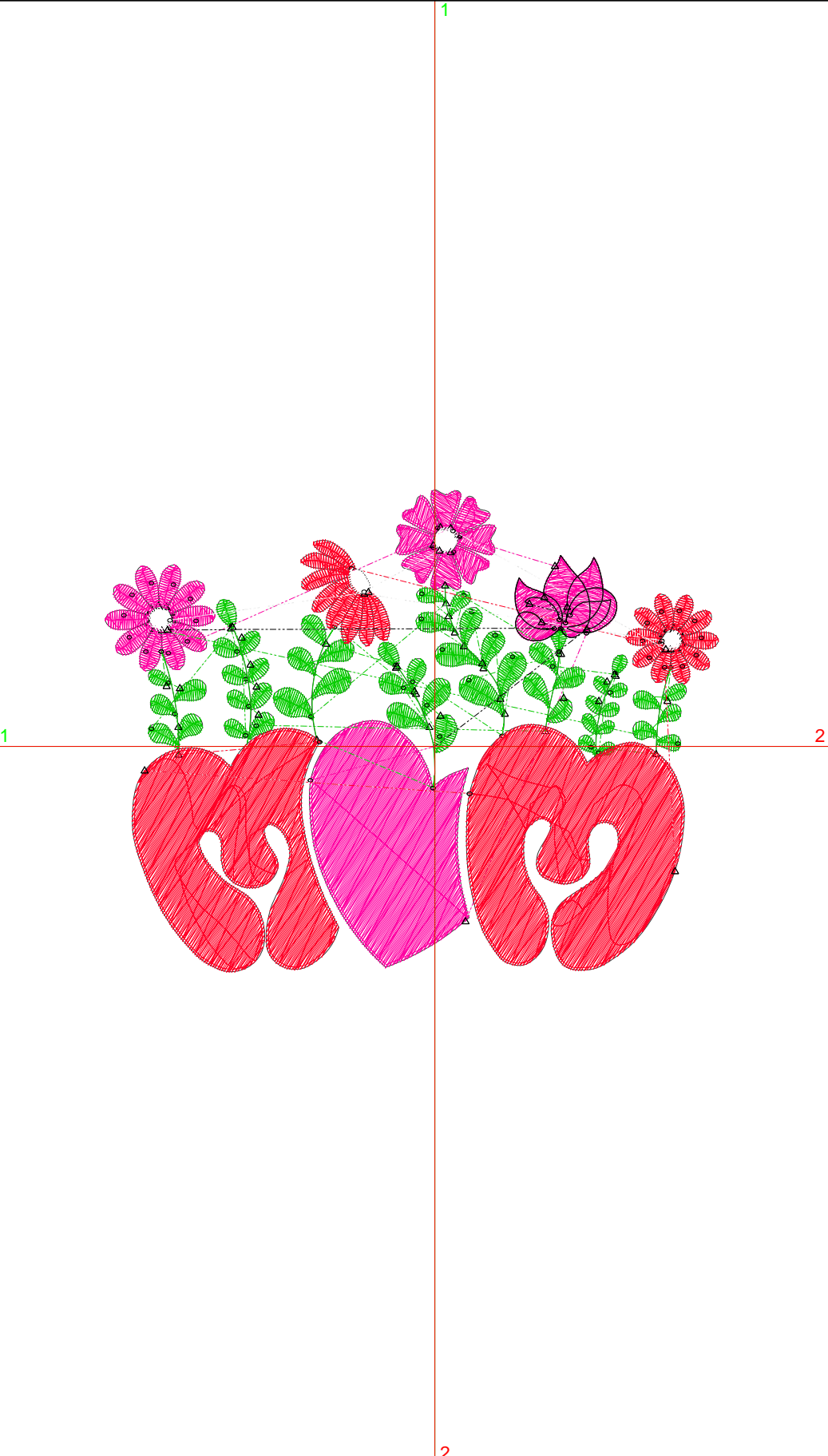
Title:

Stitches: 11,281
 Height: 3.15 in
 Width: 4.00 in
 Colors: 5
 Colorway: Colorway 1
 Zoom: 1:1

Machine format: Tajima
 Color changes: 4
 Stops: 5
 Trims: 75
 Appliqués: 0
 Left: 54.7 mm
 Right: 47.0 mm
 Up: 42.5 mm
 Down: 37.5 mm
 EndX: 0.00 in
 EndY: 0.00 in
 Area: 12.60 in²
 Max stitch: 6.9 mm
 Min stitch: 0.0 mm
 Max jump: 6.9 mm
 Total thread: 199.06ft
 Total bobbin: 73.12ft

Stop Sequence:

#	N#	Color	St.	Code	Name	Chart
1.	4		3,342		R255 G1 B162	
2.	5		2,513		R8 G204 B1	
3.	2		4,995		R255 G1 B39	
4.	9		250	9	White	Default
5.	8		179	8	Black	Default



Approval Sheet

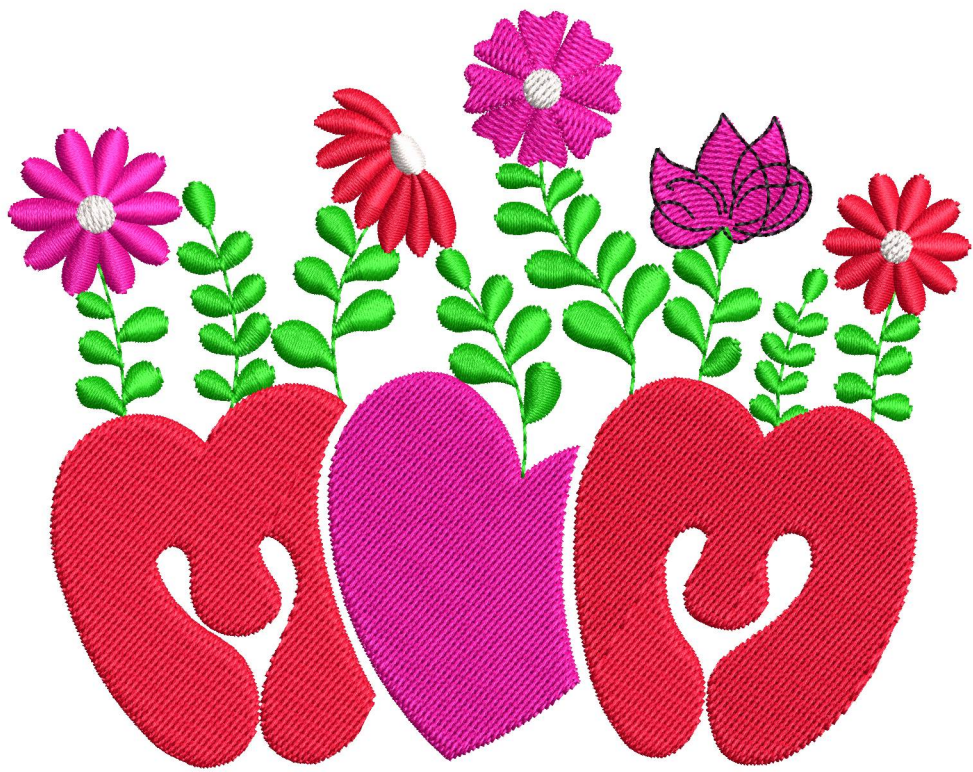
Wilcom EmbroideryStudio - Designing

5 INCH

Design: **5 inch**

Title:

Height: 3.93 in
Width: 5.00 in
Colors: 5
Colorway: Colorway 1
Zoom: 1:1



Product type:
Product:
Total qty:
Product colors:
Position:

Terms and Conditions:

Approved By:

Date:

Production Worksheet

Wilcom EmbroideryStudio - Designing

5 INCH





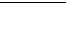
Design: **5 inch**

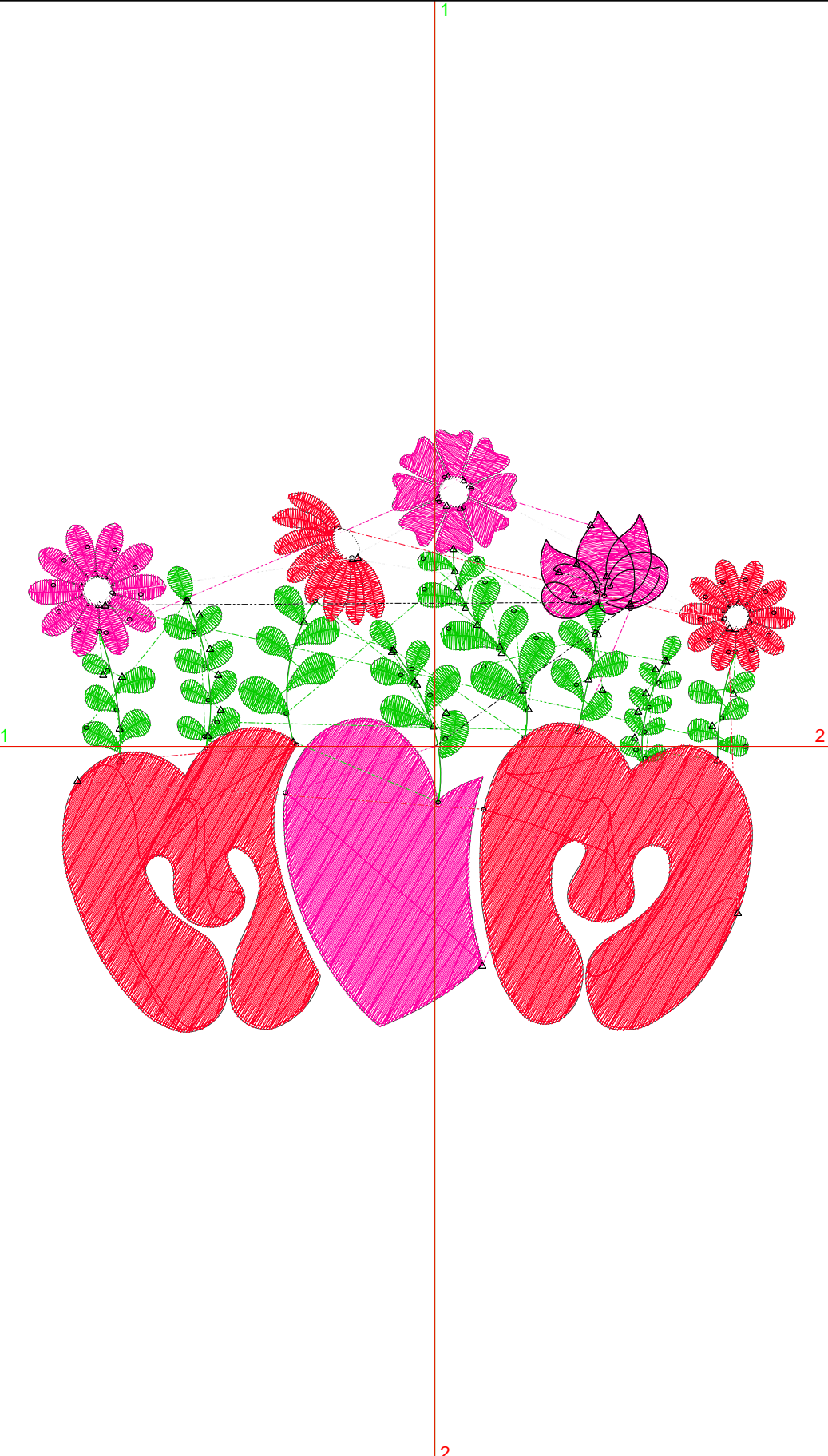
Title:

Stitches: 15,273
 Height: 3.93 in
 Width: 5.00 in
 Colors: 5
 Colorway: Colorway 1
 Zoom: 1:1

Machine format: Tajima
 Color changes: 4
 Stops: 5
 Trims: 80
 Appliqués: 0
 Left: 67.4 mm
 Right: 59.7 mm
 Up: 52.5 mm
 Down: 47.4 mm
 EndX: 0.00 in
 EndY: 0.00 in
 Area: 19.67 in²
 Max stitch: 7.0 mm
 Min stitch: 0.0 mm
 Max jump: 7.0 mm
 Total thread: 290.84ft
 Total bobbin: 111.99ft

Stop Sequence:

#	N#	Color	St.	Code	Name	Chart
1.	4		4,639	R255	G1 B162	
2.	5		3,080	R8	G204 B1	
3.	2		7,042	R255	G1 B39	
4.	9		311	9	White	Default
5.	8		199	8	Black	Default



Approval Sheet

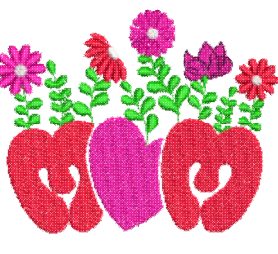
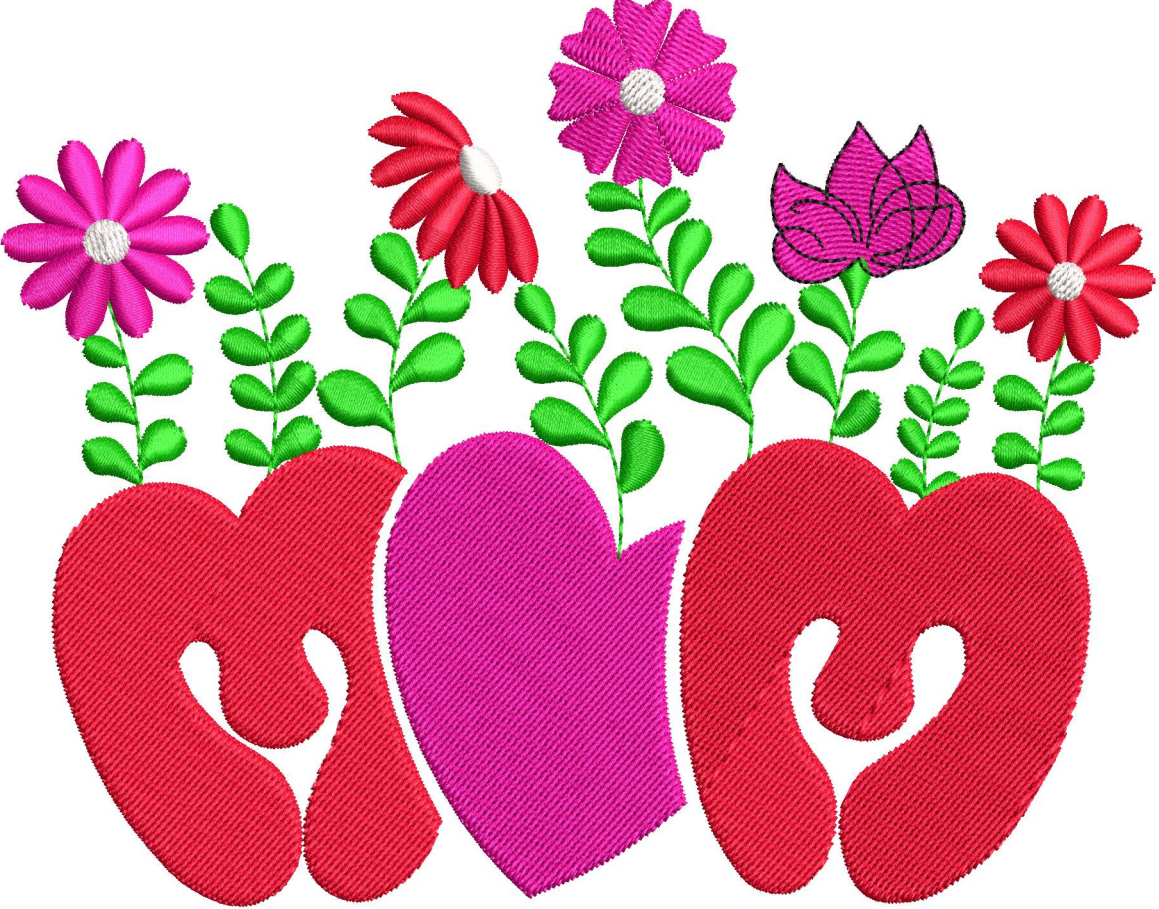
Wilcom EmbroideryStudio - Designing

6 INCH

Design: **6 inch**

Title:

Height: 4.72 in
Width: 6.00 in
Colors: 5
Colorway: Colorway 1
Zoom: 1:1



Product type:
Product:
Total qty:
Product colors:
Position:

Terms and Conditions:

Approved By:

Date:

Production Worksheet

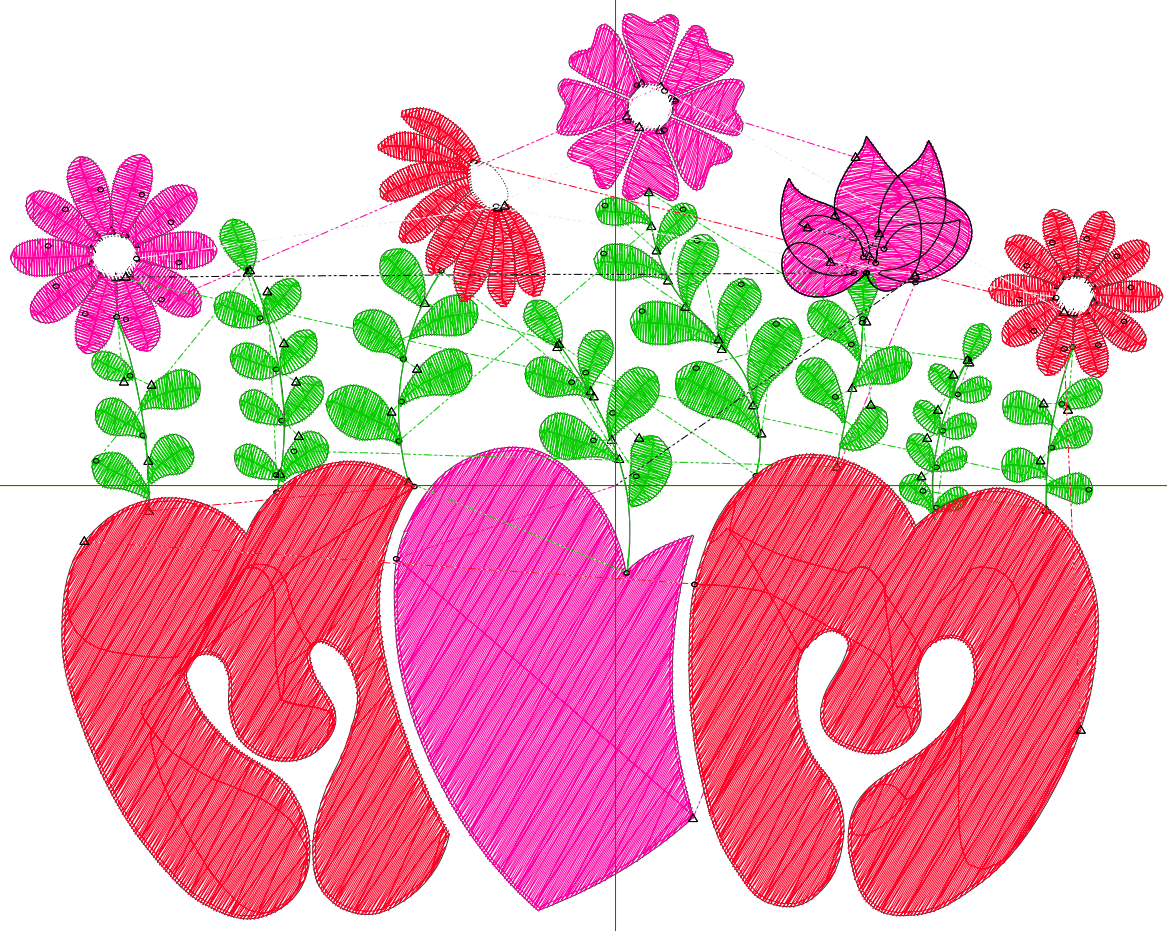
Wilcom EmbroideryStudio - Designing

6 INCH

Design: **6 inch**

Title:

Stitches: 19,787
Height: 4.72 in
Width: 6.00 in
Colors: 5
Colorway: Colorway 1
Zoom: 1:1



Production Worksheet

Wilcom EmbroideryStudio - Designing

6 INCH






Design: **6 inch**

Title:

Stitches: 19,787
 Height: 4.72 in
 Width: 6.00 in
 Colors: 5
 Colorway: Colorway 1
 Zoom: 1:1

Machine format: Tajima
 Color changes: 4
 Stops: 5
 Trims: 85
 Appliqués: 0
 Left: 80.1 mm
 Right: 72.4 mm
 Up: 62.5 mm
 Down: 57.4 mm
 EndX: 0.00 in
 EndY: 0.00 in
 Area 28.32 in²
 Max stitch: 7.0 mm
 Min stitch: 0.0 mm
 Max jump: 7.0 mm
 Total thread: 399.14ft
 Total bobbin: 158.62ft

Stop Sequence:

#	N#	Color	St.	Code	Name	Chart
1.	4		6,123		R255 G1 B162	
2.	5		3,676		R8 G204 B1	
3.	2		9,398		R255 G1 B39	
4.	9		363	9	White	Default
5.	8		225	8	Black	Default

Approval Sheet

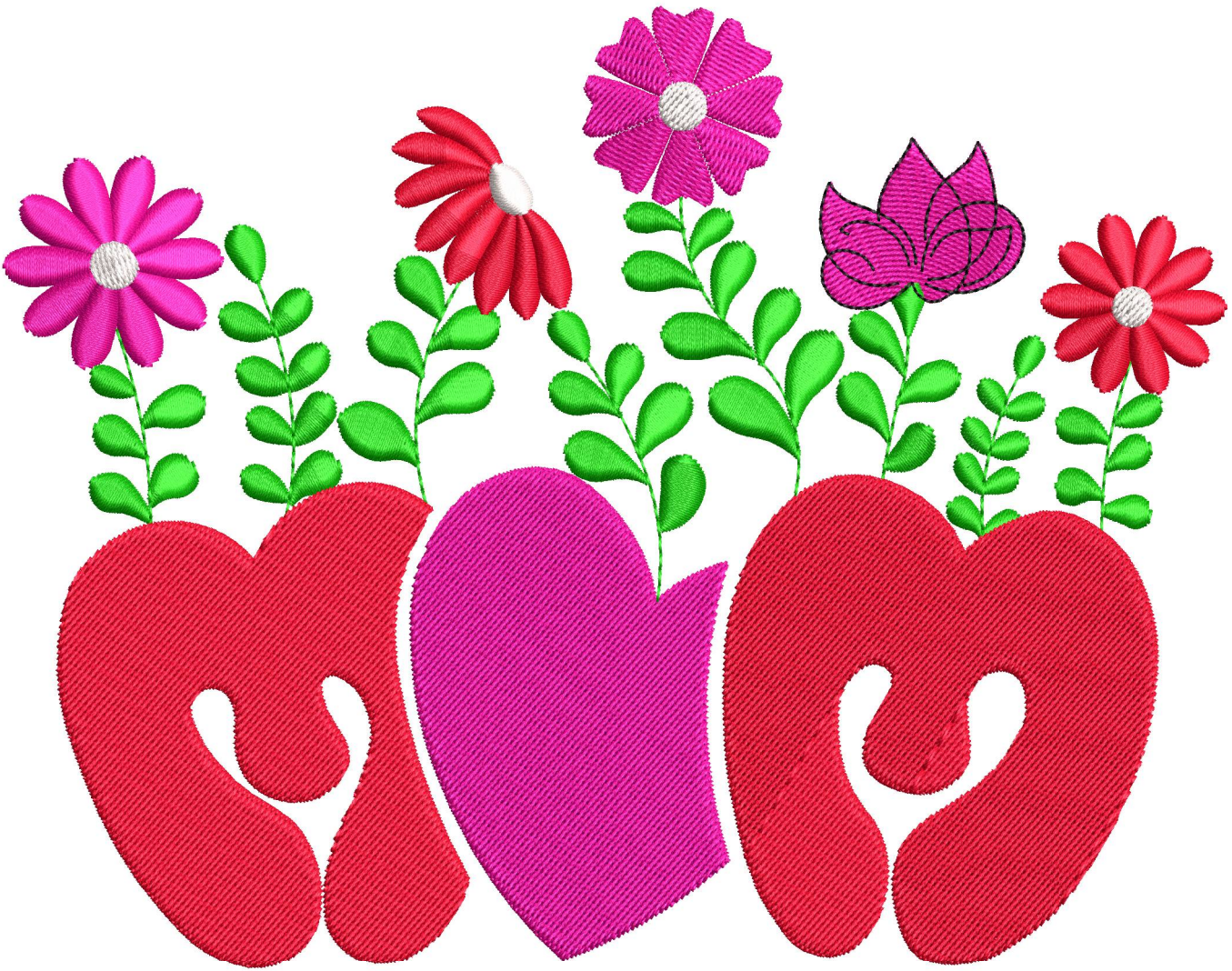
Wilcom EmbroideryStudio - Designing

7 INCH

Design: **7 inch**

Title:

Height: 5.50 in
Width: 7.00 in
Colors: 5
Colorway: Colorway 1
Zoom: 1:1



Product type:
Product:
Total qty:
Product colors:
Position:

Terms and Conditions:

Approved By:

Date:

Production Worksheet

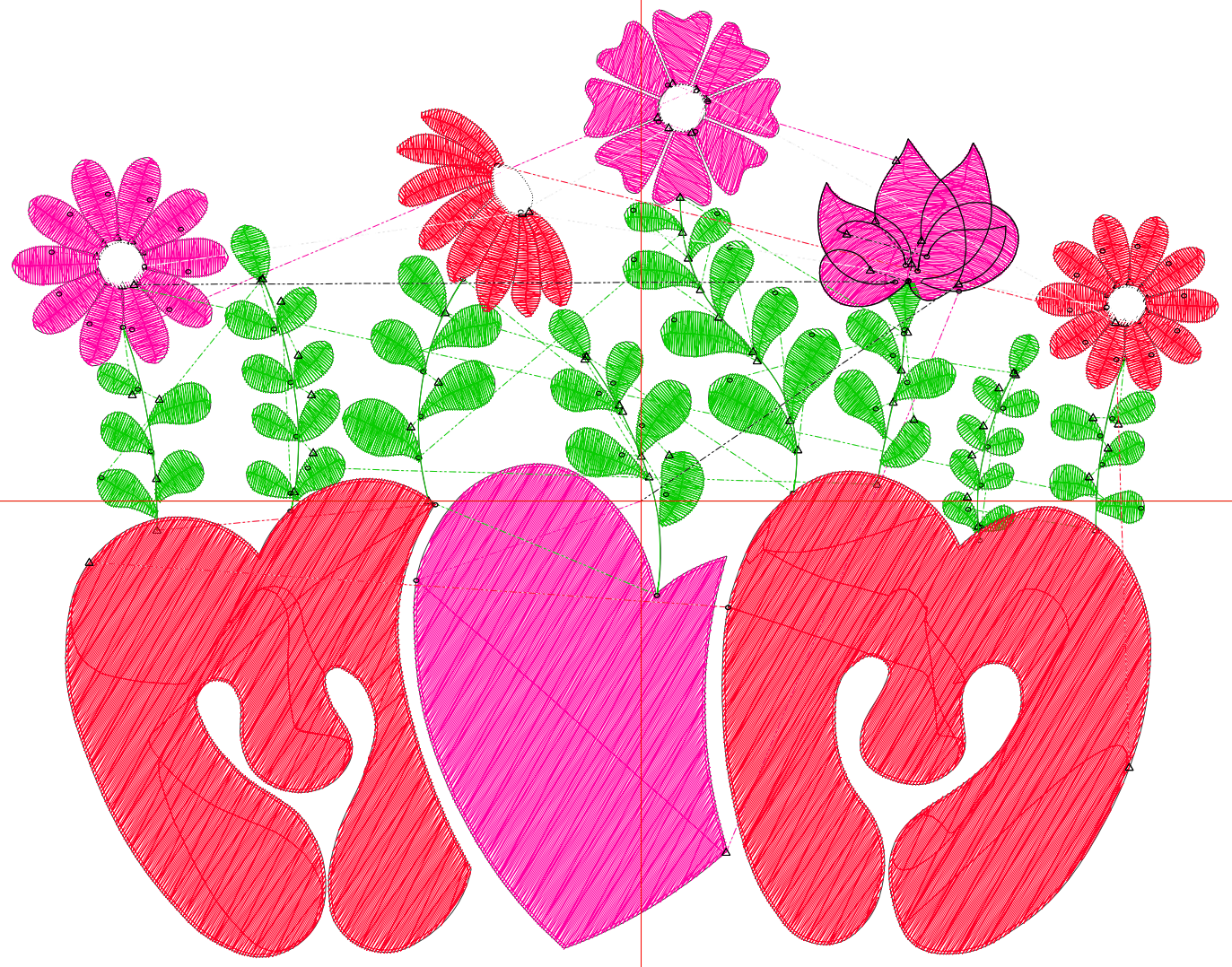
Wilcom EmbroideryStudio - Designing

7 INCH

Design: **7 inch**

Title:

Stitches: 24,977
Height: 5.50 in
Width: 7.00 in
Colors: 5
Colorway: Colorway 1
Zoom: 1:1



Production Worksheet

Wilcom EmbroideryStudio - Designing

7 INCH






Design: **7 inch**

Title:

Stitches: 24,977
 Height: 5.50 in
 Width: 7.00 in
 Colors: 5
 Colorway: Colorway 1
 Zoom: 1:1

Machine format: Tajima
 Color changes: 4
 Stops: 5
 Trims: 88
 Appliqués: 0
 Left: 92.8 mm
 Right: 85.1 mm
 Up: 72.4 mm
 Down: 67.3 mm
 EndX: 0.00 in
 EndY: 0.00 in
 Area 38.53 in²
 Max stitch: 7.6 mm
 Min stitch: 0.0 mm
 Max jump: 7.0 mm
 Total thread: 527.27ft
 Total bobbin: 214.36ft

Stop Sequence:

#	N#	Color	St.	Code	Name	Chart
1.	4		7,828		R255 G1 B162	
2.	5		4,322		R8 G204 B1	
3.	2		12,147		R255 G1 B39	
4.	9		435	9	White	Default
5.	8		243	8	Black	Default

Approval Sheet

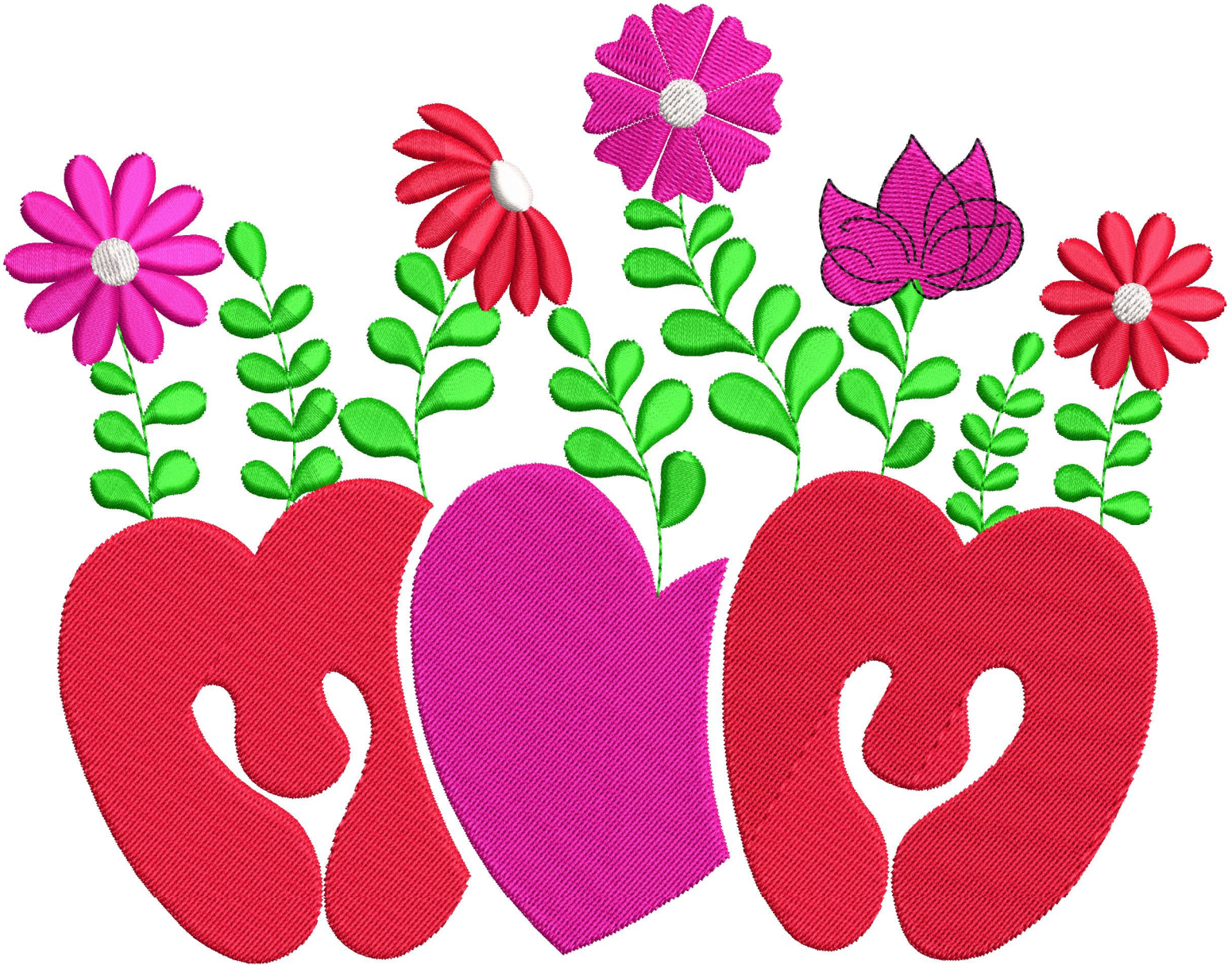
Wilcom EmbroideryStudio - Designing

8 INCH

Design: **8 inch**

Title:

Height: 6.29 in
Width: 8.00 in
Colors: 5
Colorway: Colorway 1
Zoom: 1:1



Product type:
Product:
Total qty:
Product colors:
Position:

Terms and Conditions:

Approved By:

Date:

Production Worksheet

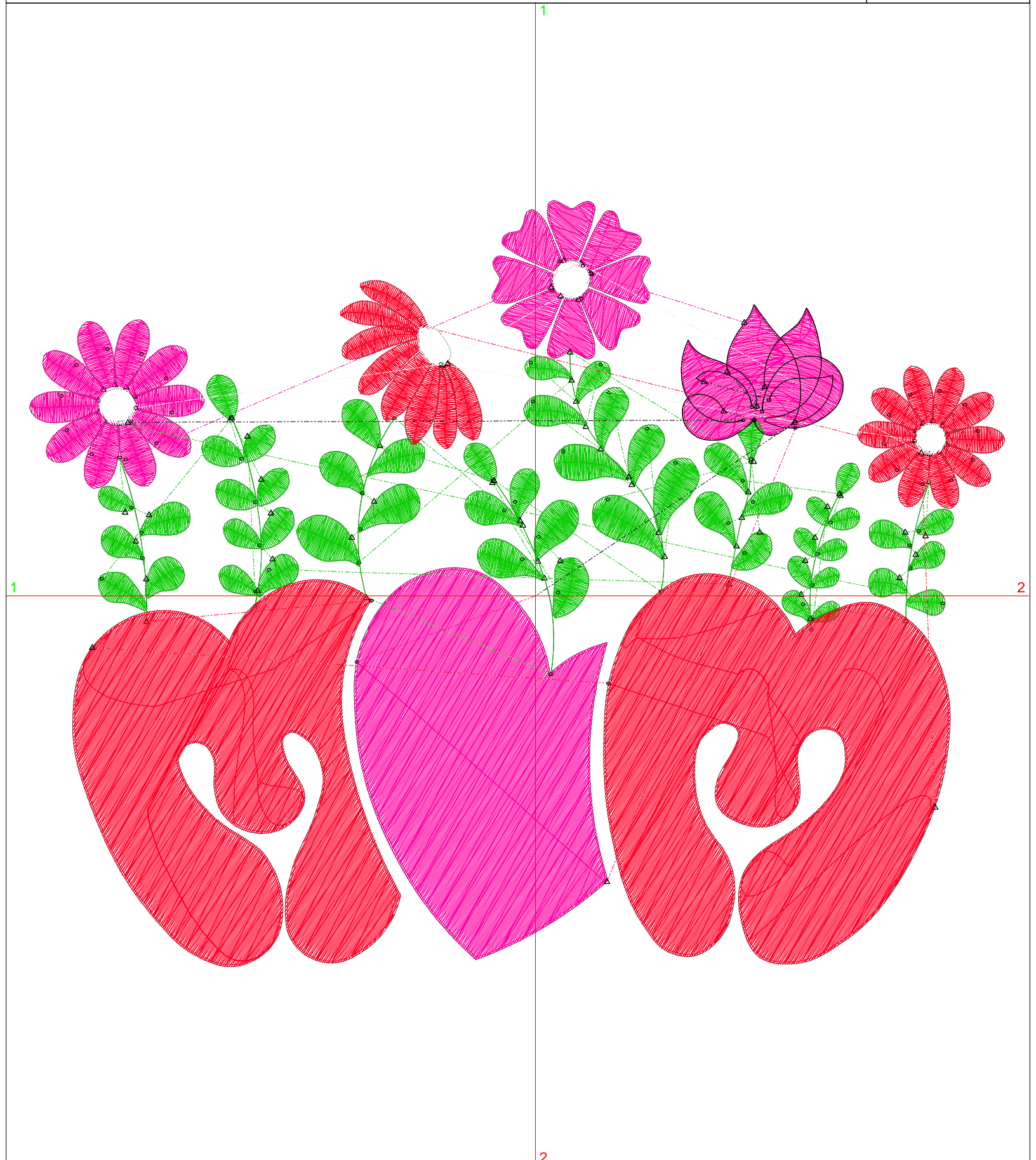
Wilcom EmbroideryStudio - Designing

8 INCH

Design: **8 inch**

Title:

Stitches: 30,923
Height: 6.29 in
Width: 8.00 in
Colors: 5
Colorway: Colorway 1
Zoom: 1:1



Production Worksheet

Wilcom EmbroideryStudio - Designing

8 INCH






Design: **8 inch**

Title:

Stitches: 30,923
 Height: 6.29 in
 Width: 8.00 in
 Colors: 5
 Colorway: Colorway 1
 Zoom: 1:1

Machine format: Tajima
 Color changes: 4
 Stops: 5
 Trims: 90
 Appliqués: 0
 Left: 105.5 mm
 Right: 97.8 mm
 Up: 82.4 mm
 Down: 77.3 mm
 EndX: 0.00 in
 EndY: 0.00 in
 Area 50.32 in²
 Max stitch: 8.6 mm
 Min stitch: 0.0 mm
 Max jump: 7.0 mm
 Total thread: 675.67ft
 Total bobbin: 279.18ft

Stop Sequence:

#	N#	Color	St.	Code	Name	Chart
1.	4		9,845		R255 G1 B162	
2.	5		5,003		R8 G204 B1	
3.	2		15,303		R255 G1 B39	
4.	9		514	9	White	Default
5.	8		256	8	Black	Default