

Production Worksheet

Wilcom EmbroideryStudio - Designing



Design: **3**

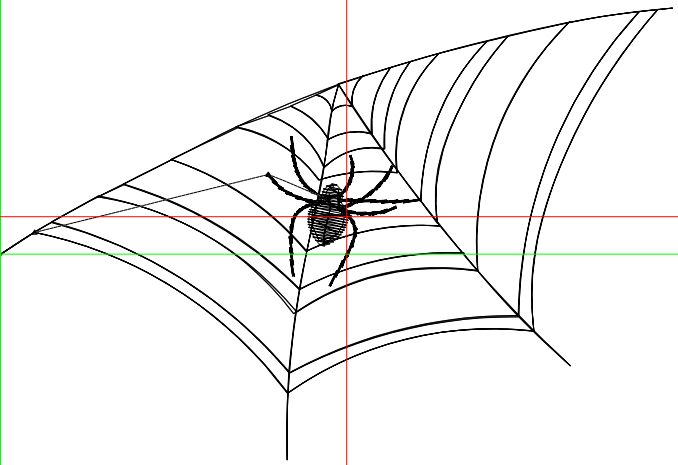
Title:

Stitches: 1,150
 Height: 2.35 in
 Width: 3.50 in
 Colors: 1
 Colorway: Colorway 1
 Zoom: 1:1

Machine format: Tajima
 Color changes: 0
 Stops: 1
 Trims: 2
 Appliqués: 0
 Left: 0.0 mm
 Right: 88.9 mm
 Up: 32.6 mm
 Down: 27.2 mm
 EndX: 1.80 in
 EndY: 0.20 in
 Area: 8.24 in²
 Max stitch: 6.2 mm
 Min stitch: 0.5 mm
 Max jump: 6.2 mm
 Total thread: 18.44ft
 Total bobbin: 6.26ft

Stop Sequence:

#	N#	Color	St.	Code	Name	Chart
1.	8		1,148	8	Black	Default



Production Worksheet

Wilcom EmbroideryStudio - Designing



Design: **4**

Title:

Stitches: 1,427
 Height: 3.03 in
 Width: 4.50 in
 Colors: 1
 Colorway: Colorway 1
 Zoom: 1:1

Machine format: Tajima
 Color changes: 0
 Stops: 1
 Trims: 2
 Appliqués: 0
 Left: 0.0 mm
 Right: 114.3 mm
 Up: 41.9 mm
 Down: 35.0 mm
 EndX: 2.33 in
 EndY: 0.27 in
 Area: 13.61 in²
 Max stitch: 6.7 mm
 Min stitch: 0.5 mm
 Max jump: 6.6 mm
 Total thread: 23.69ft
 Total bobbin: 8.30ft

Stop Sequence:

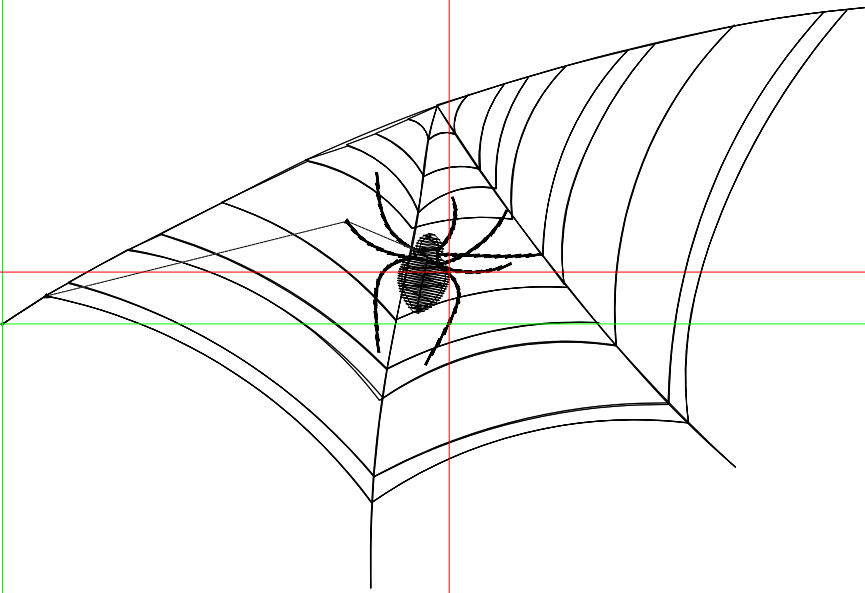
#	N#	Color	St.	Code	Name	Chart
1.	8	█	1,425	8	Black	Default

1

2

1

2



Production Worksheet

Wilcom EmbroideryStudio - Designing



Design: **5**

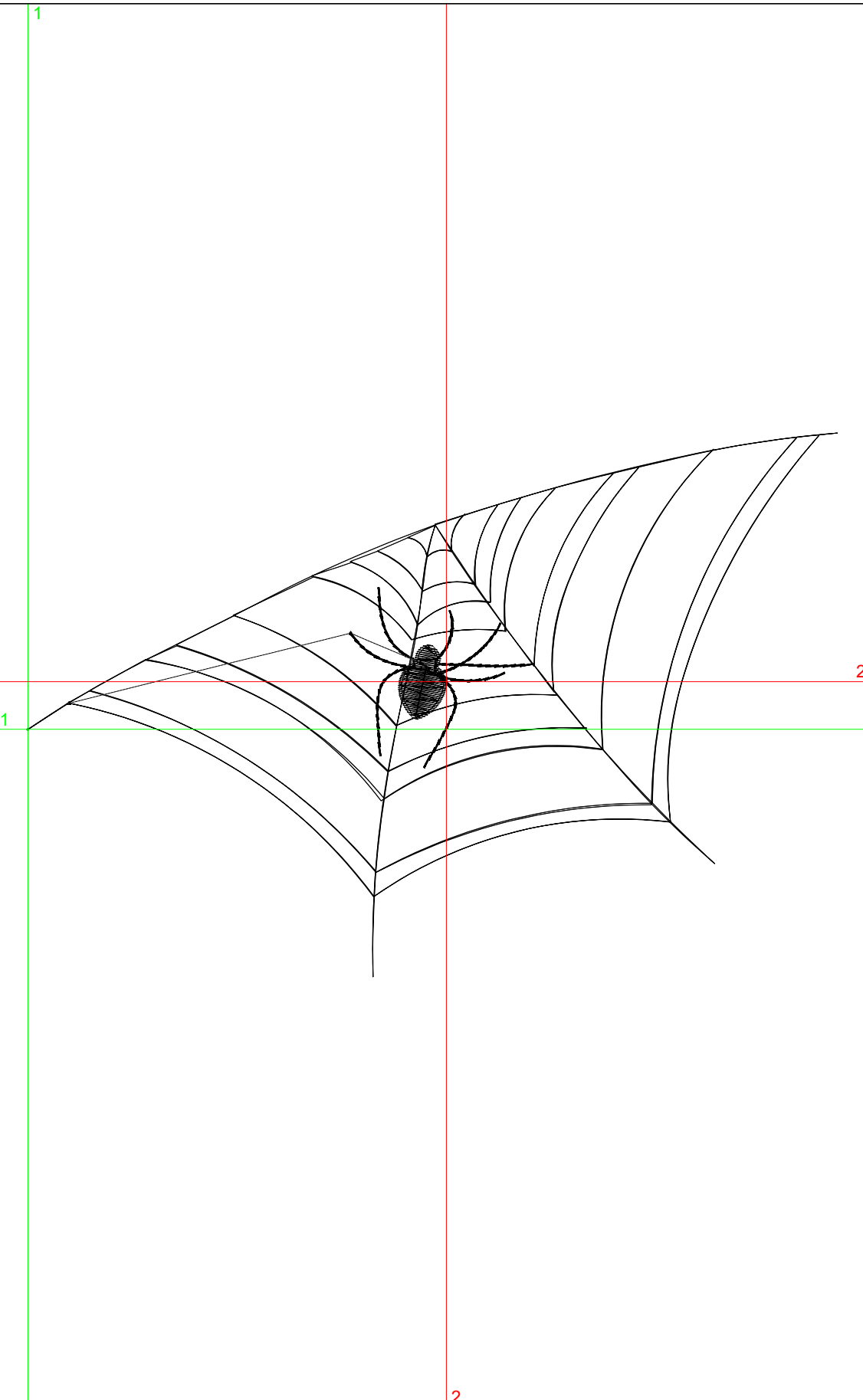
Title:

Stitches: 1,734
 Height: 3.70 in
 Width: 5.50 in
 Colors: 1
 Colorway: Colorway 1
 Zoom: 1:1

Machine format: Tajima
 Color changes: 0
 Stops: 1
 Trims: 2
 Appliqués: 0
 Left: 0.0 mm
 Right: 139.7 mm
 Up: 51.2 mm
 Down: 42.8 mm
 EndX: 2.84 in
 EndY: 0.32 in
 Area: 20.34 in²
 Max stitch: 6.9 mm
 Min stitch: 0.5 mm
 Max jump: 6.9 mm
 Total thread: 29.33ft
 Total bobbin: 10.44ft

Stop Sequence:

#	N#	Color	St.	Code	Name	Chart
1.	8	█	1,732	8	Black	Default



Production Worksheet

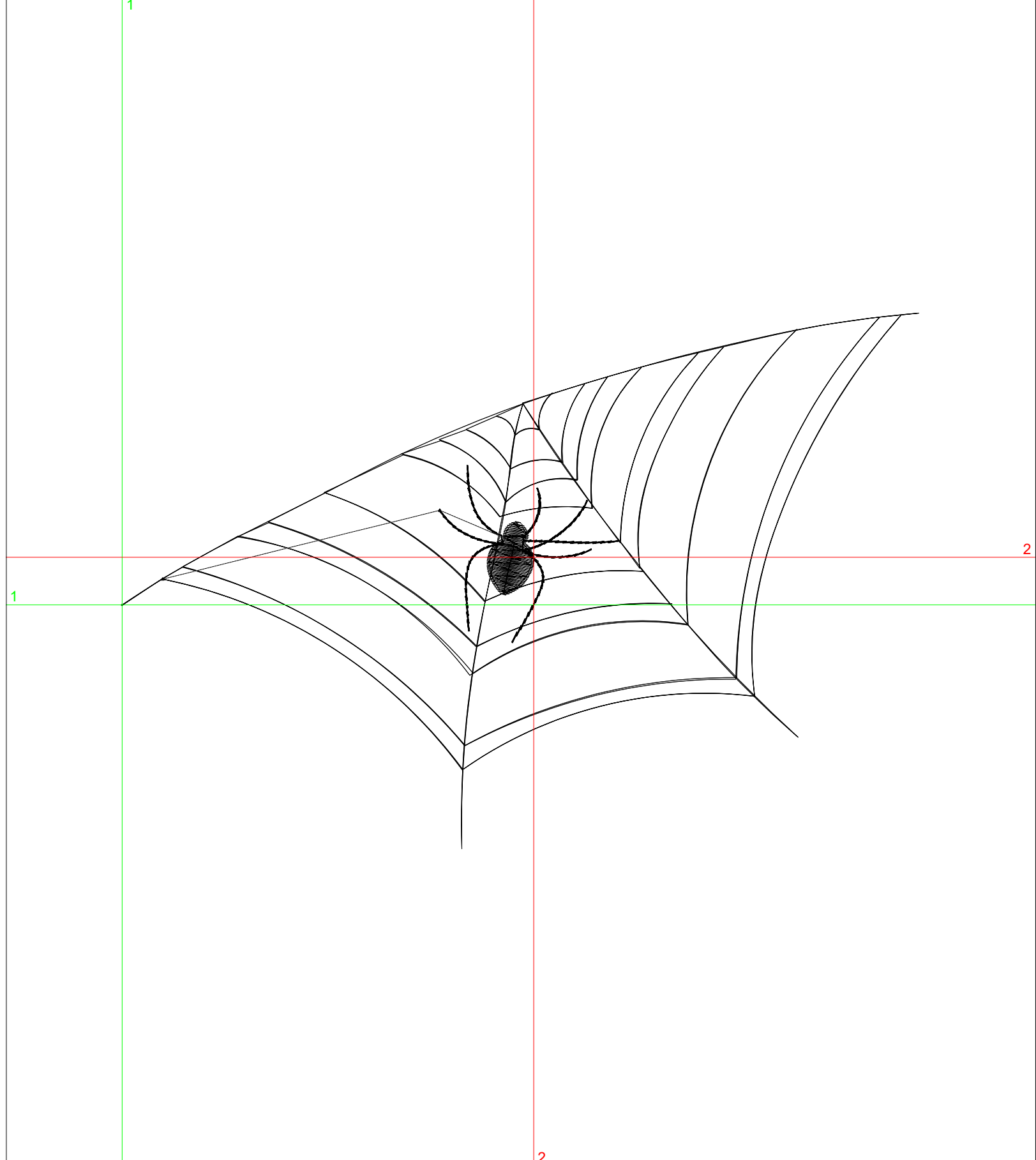
Wilcom EmbroideryStudio - Designing



Design: **6**

Title:

Stitches: 2,023
Height: 4.37 in
Width: 6.50 in
Colors: 1
Colorway: Colorway 1
Zoom: 1:1



Production Worksheet

Wilcom EmbroideryStudio - Designing



Design: **6**

Title:

Stitches: 2,023
 Height: 4.37 in
 Width: 6.50 in
 Colors: 1
 Colorway: Colorway 1
 Zoom: 1:1

Machine format: Tajima
 Color changes: 0
 Stops: 1
 Trims: 2
 Appliqués: 0
 Left: 0.0 mm
 Right: 165.1 mm
 Up: 60.5 mm
 Down: 50.5 mm
 EndX: 3.36 in
 EndY: 0.39 in
 Area 28.41 in²
 Max stitch: 6.8 mm
 Min stitch: 0.5 mm
 Max jump: 6.4 mm
 Total thread: 34.91ft
 Total bobbin: 12.62ft

Stop Sequence:

#	N#	Color	St.	Code	Name	Chart
1.	8	█	2,021	8	Black	Default

Production Worksheet

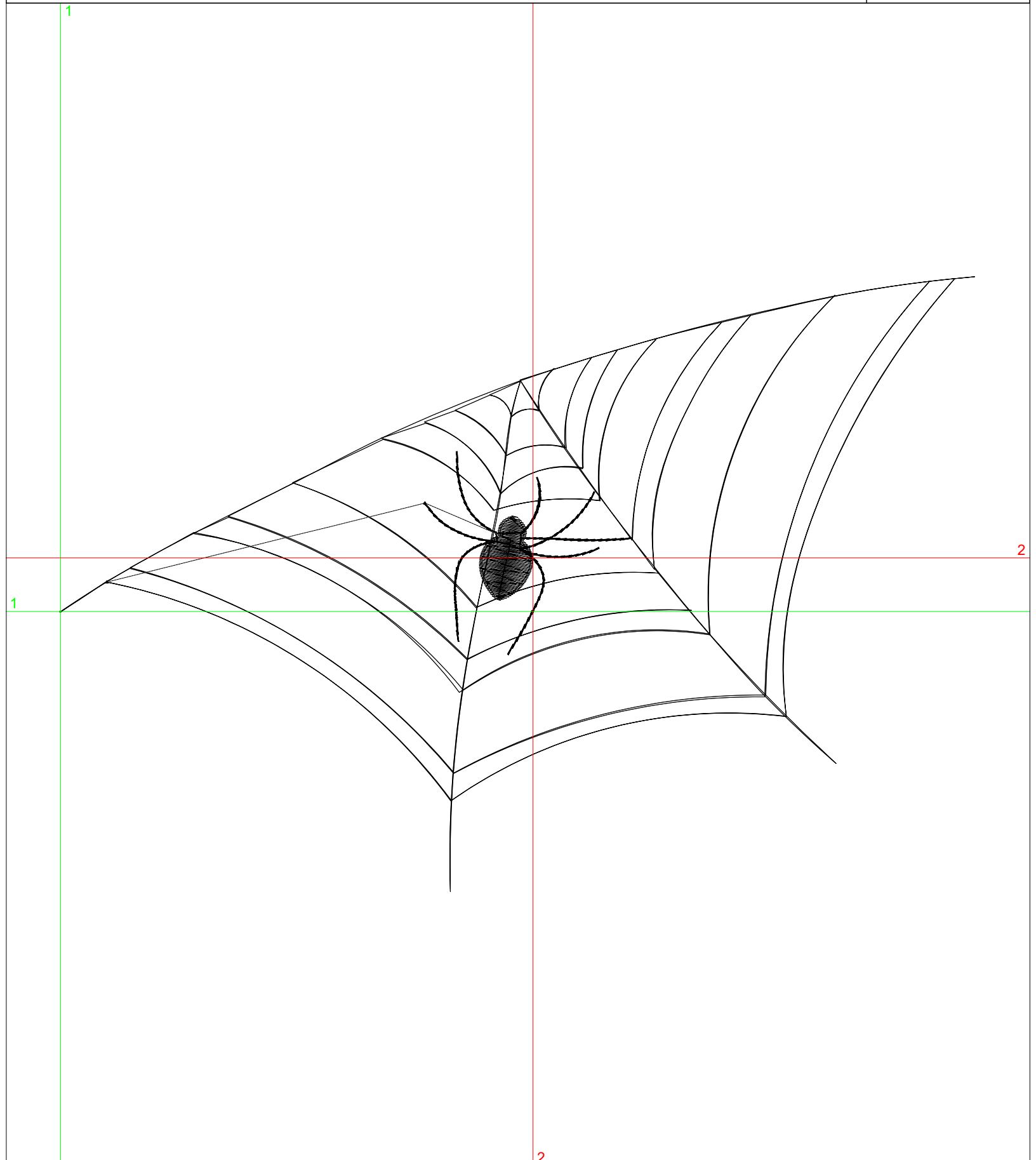
Wilcom EmbroideryStudio - Designing



Design: **7**

Title:

Stitches: 2,333
Height: 5.04 in
Width: 7.50 in
Colors: 1
Colorway: Colorway 1
Zoom: 1:1



Production Worksheet

Wilcom EmbroideryStudio - Designing



Design: **7**

Title:

Stitches: 2,333
 Height: 5.04 in
 Width: 7.50 in
 Colors: 1
 Colorway: Colorway 1
 Zoom: 1:1

Machine format: Tajima
 Color changes: 0
 Stops: 1
 Trims: 2
 Appliqués: 0
 Left: 0.0 mm
 Right: 190.5 mm
 Up: 69.8 mm
 Down: 58.3 mm
 EndX: 3.88 in
 EndY: 0.44 in
 Area 37.82 in²
 Max stitch: 6.9 mm
 Min stitch: 0.5 mm
 Max jump: 6.6 mm
 Total thread: 40.84ft
 Total bobbin: 14.94ft

Stop Sequence:

#	N#	Color	St.	Code	Name	Chart
1.	8		2,331	8	Black	Default