

Production Worksheet

Wilcom EmbroideryStudio - Designing



Design: **3**

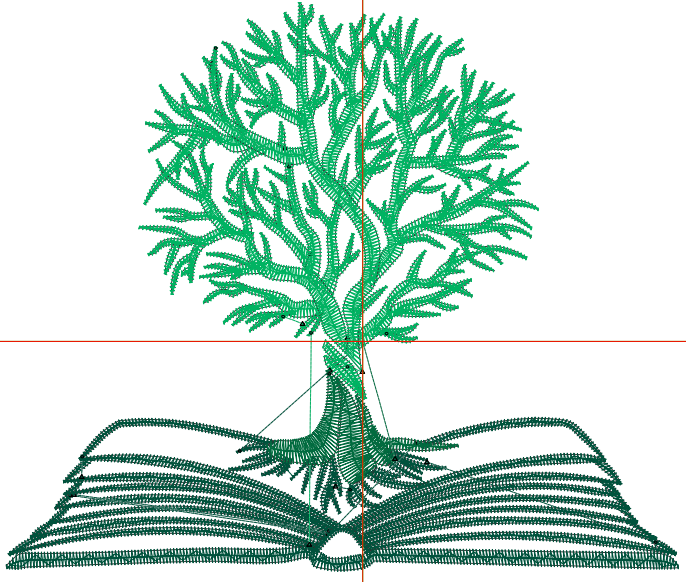
Title:

Stitches: 13,059
 Height: 2.96 in
 Width: 3.50 in
 Colors: 3
 Colorway: Colorway 1
 Zoom: 1:1

Machine format: Tajima
 Color changes: 2
 Stops: 3
 Trims: 15
 Appliqués: 0
 Left: 47.2 mm
 Right: 41.8 mm
 Up: 44.8 mm
 Down: 30.5 mm
 EndX: 0.00 in
 EndY: 0.00 in
 Area: 10.38 in²
 Max stitch: 6.8 mm
 Min stitch: 0.0 mm
 Max jump: 6.8 mm
 Total thread: 160.71ft
 Total bobbin: 43.87ft

Stop Sequence:

#	N#	Color	St.	Code	Name	Chart
1.	1		4,932	R0	G82 B60	
2.	3		7,729	R0	G179 B98	
3.	2		396	R1	G107 B63	



Production Worksheet

Wilcom EmbroideryStudio - Designing



Design: **4**

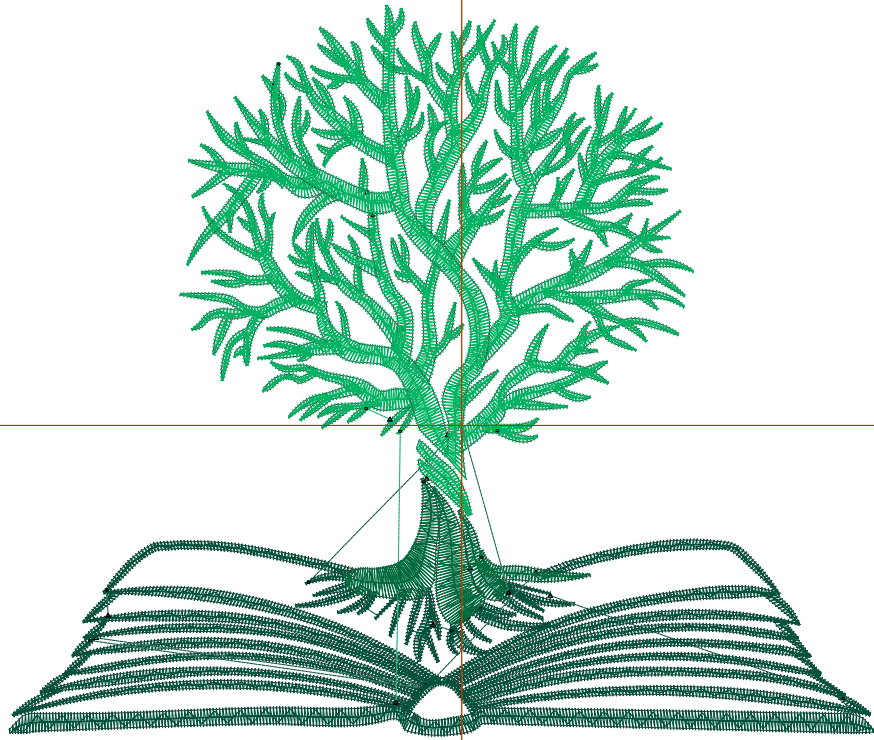
Title:

Stitches: 16,564
 Height: 3.81 in
 Width: 4.50 in
 Colors: 3
 Colorway: Colorway 1
 Zoom: 1:1

Machine format: Tajima
 Color changes: 2
 Stops: 3
 Trims: 16
 Appliqués: 0
 Left: 59.9 mm
 Right: 54.5 mm
 Up: 55.6 mm
 Down: 41.2 mm
 EndX: 0.00 in
 EndY: 0.00 in
 Area: 17.14 in²
 Max stitch: 6.9 mm
 Min stitch: 0.0 mm
 Max jump: 6.9 mm
 Total thread: 219.57ft
 Total bobbin: 65.12ft

Stop Sequence:

#	N#	Color	St.	Code	Name	Chart
1.	1		6,331	R0	G82 B60	
2.	3		9,708	R0	G179 B98	
3.	2		523	R1	G107 B63	



Production Worksheet

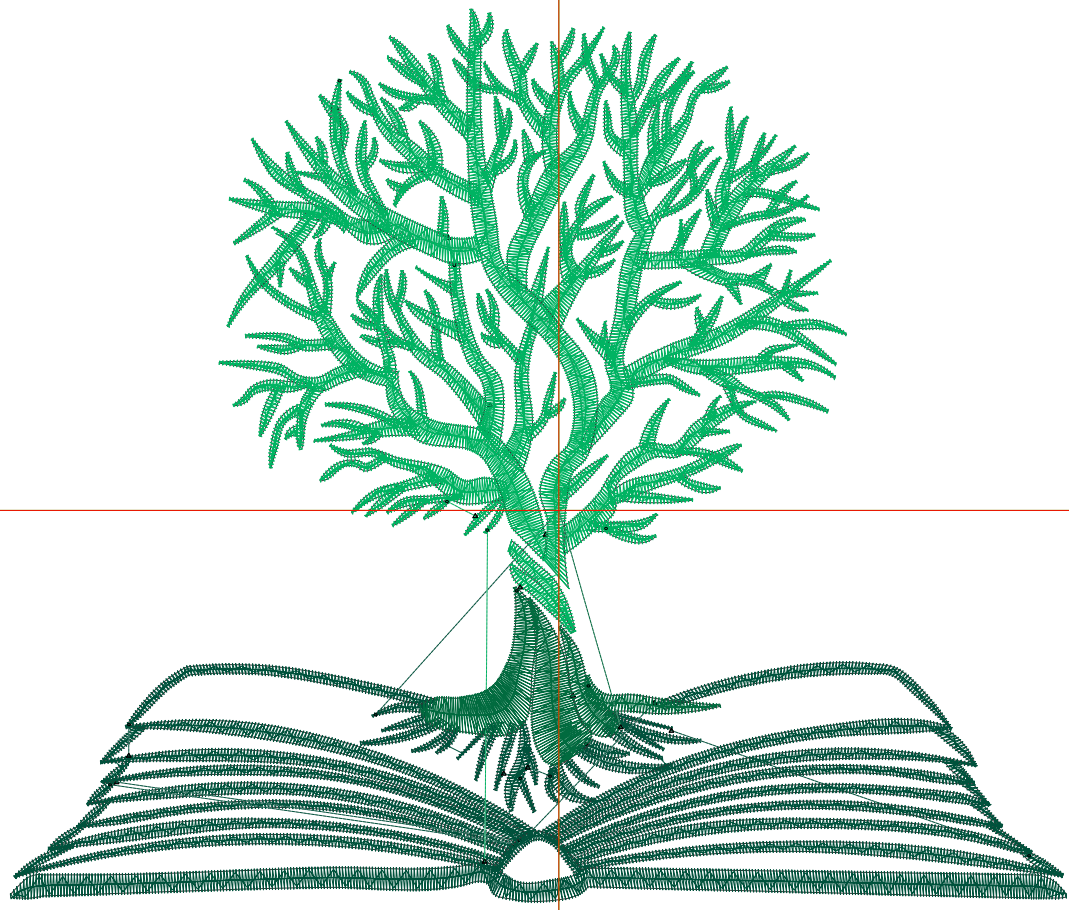
Wilcom EmbroideryStudio - Designing



Design: **5**

Title:

Stitches: 20,205
Height: 4.65 in
Width: 5.50 in
Colors: 3
Colorway: Colorway 1
Zoom: 1:1



Production Worksheet

Wilcom EmbroideryStudio - Designing



Design: **5**

Title:

Stitches: 20,205
Height: 4.65 in
Width: 5.50 in
Colors: 3
Colorway: Colorway 1
Zoom: 1:1

Machine format: Tajima
Color changes: 2
Stops: 3
Trims: 17
Appliqués: 0
Left: 72.6 mm
Right: 67.2 mm
Up: 66.3 mm
Down: 51.9 mm
EndX: 0.00 in
EndY: 0.00 in
Area 25.60 in²
Max stitch: 6.8 mm
Min stitch: 0.0 mm
Max jump: 6.8 mm
Total thread: 286.93ft
Total bobbin: 90.89ft

Stop Sequence:

#	N#	Color	St.	Code	Name	Chart
1.	1		7,799		R0 G82 B60	
2.	3		11,730		R0 G179 B98	
3.	2		674		R1 G107 B63	

Production Worksheet

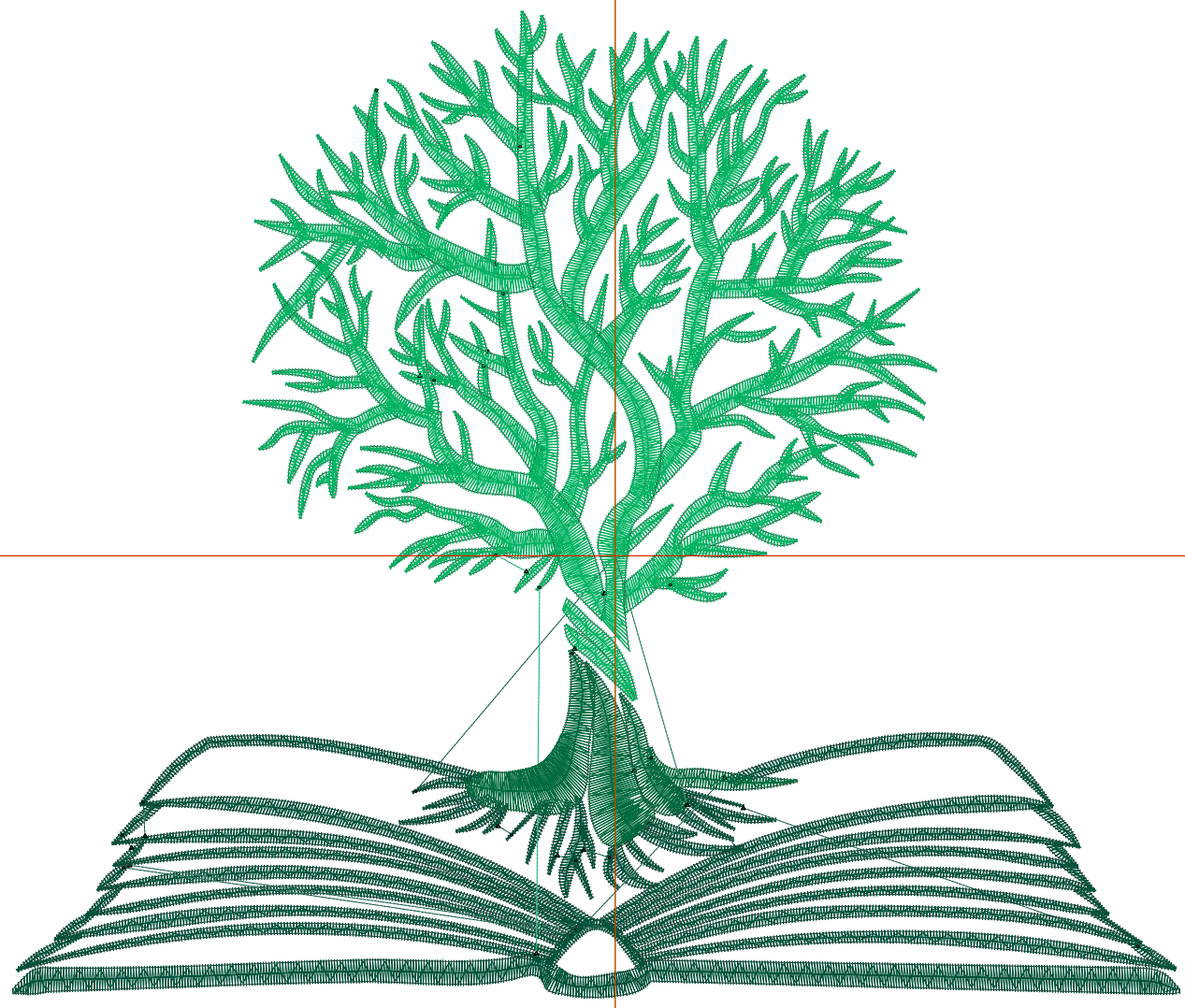
Wilcom EmbroideryStudio - Designing



Design: **6**

Title:

Stitches: 24,046
Height: 5.50 in
Width: 6.50 in
Colors: 3
Colorway: Colorway 1
Zoom: 1:1



Production Worksheet

Wilcom EmbroideryStudio - Designing



Design: **6**

Title:

Stitches: 24,046
Height: 5.50 in
Width: 6.50 in
Colors: 3
Colorway: Colorway 1
Zoom: 1:1

Machine format: Tajima
Color changes: 2
Stops: 3
Trims: 22
Appliqués: 0
Left: 85.3 mm
Right: 79.9 mm
Up: 77.0 mm
Down: 62.6 mm
EndX: 0.00 in
EndY: 0.00 in
Area 35.74 in²
Max stitch: 7.0 mm
Min stitch: 0.0 mm
Max jump: 7.0 mm
Total thread: 363.53ft
Total bobbin: 121.34ft

Stop Sequence:

#	N#	Color	St.	Code	Name	Chart
1.	1		9,284		R0 G82 B60	
2.	3		13,879		R0 G179 B98	
3.	2		881		R1 G107 B63	

Production Worksheet

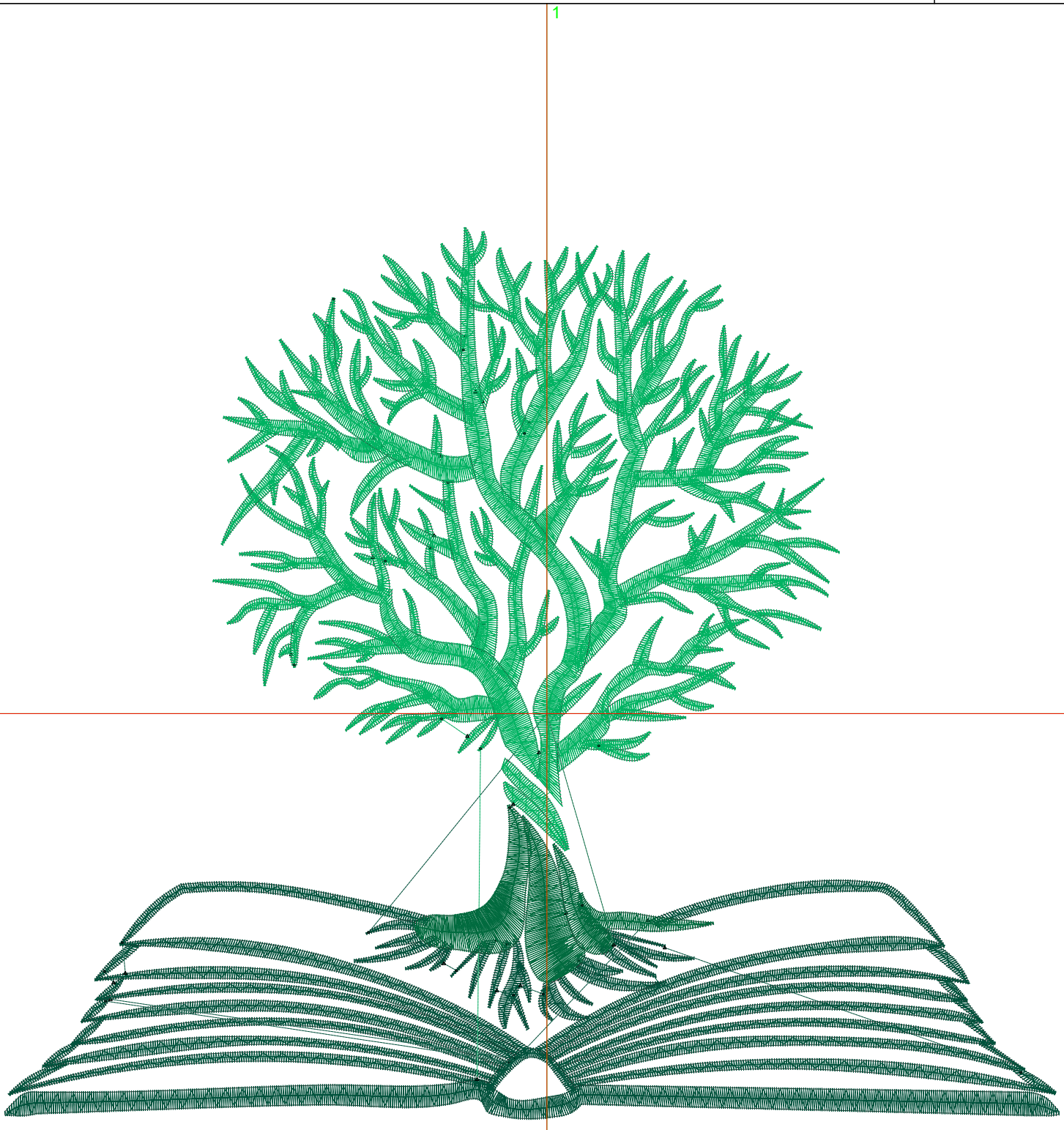
Wilcom EmbroideryStudio - Designing



Design: **7**

Title:

Stitches: 27,919
Height: 6.34 in
Width: 7.50 in
Colors: 3
Colorway: Colorway 1
Zoom: 1:1



Production Worksheet

Wilcom EmbroideryStudio - Designing



Design: **7**

Title:

Stitches: 27,919
 Height: 6.34 in
 Width: 7.50 in
 Colors: 3
 Colorway: Colorway 1
 Zoom: 1:1

Machine format: Tajima
 Color changes: 2
 Stops: 3
 Trims: 27
 Appliqués: 0
 Left: 98.0 mm
 Right: 92.6 mm
 Up: 87.7 mm
 Down: 73.4 mm
 EndX: 0.00 in
 EndY: 0.00 in
 Area 47.58 in²
 Max stitch: 6.9 mm
 Min stitch: 0.0 mm
 Max jump: 7.0 mm
 Total thread: 448.33ft
 Total bobbin: 156.53ft

Stop Sequence:

#	N#	Color	St.	Code	Name	Chart
1.	1		10,796	R0	G82 B60	
2.	3		16,027	R0	G179 B98	
3.	2		1,094	R1	G107 B63	