

Production Worksheet

Wilcom EmbroideryStudio - Designing



Design: **3**

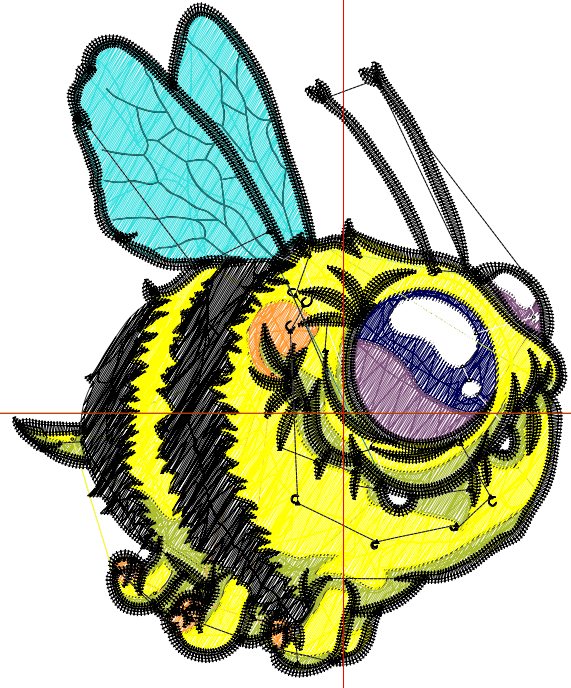
Title:

Stitches: 20,278
Height: 3.51 in
Width: 2.89 in
Colors: 9
Colorway: Colorway 1
Zoom: 1:1

Machine format: Tajima
Color changes: 8
Stops: 9
Trims: 58
Appliqués: 0
Left: 43.8 mm
Right: 29.6 mm
Up: 54.3 mm
Down: 34.9 mm
EndX: 0.00 in
EndY: 0.00 in
Area 10.14 in²
Max stitch: 11.6 mm
Min stitch: 0.0 mm
Max jump: 6.7 mm
Total thread: 297.73ft
Total bobbin: 95.84ft

Stop Sequence:

#	N#	Color	St.	Code	Name	Chart
1.	1		594		R0 G0 B82	
2.	2		479		R128 G82 B125	
3.	6		1,385		R56 G224 B224	
4.	7		2,639		R172 G189 B47	
5.	12		457	12	Orange	Default
6.	4		4,926	4	Yellow	Default
7.	3		319		R30 G120 B120	
8.	9		485	9	White	Default
9.	8		8,992	8	Black	Default



Production Worksheet

Wilcom EmbroideryStudio - Designing



Design: **4**

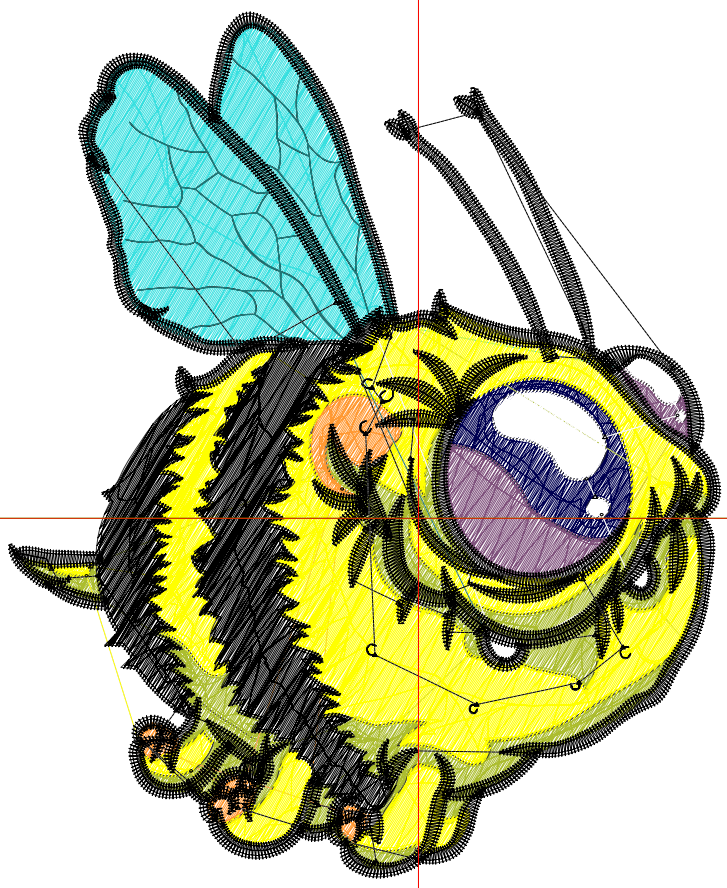
Title:

Stitches: 27,092
 Height: 4.51 in
 Width: 3.71 in
 Colors: 9
 Colorway: Colorway 1
 Zoom: 1:1

Machine format: Tajima
 Color changes: 8
 Stops: 9
 Trims: 62
 Appliqués: 0
 Left: 54.2 mm
 Right: 40.0 mm
 Up: 67.0 mm
 Down: 47.6 mm
 EndX: 0.00 in
 EndY: 0.00 in
 Area 16.74 in²
 Max stitch: 11.4 mm
 Min stitch: 0.0 mm
 Max jump: 6.7 mm
 Total thread: 429.58ft
 Total bobbin: 147.47ft

Stop Sequence:

#	N#	Color	St.	Code	Name	Chart
1.	1		784	R0	G0 B82	
2.	2		665	R128	G82 B125	
3.	6		2,134	R56	G224 B224	
4.	7		3,504	R172	G189 B47	
5.	12		622	12	Orange	Default
6.	4		6,785	4	Yellow	Default
7.	3		370	R30	G120 B120	
8.	9		644	9	White	Default
9.	8		11,582	8	Black	Default



Production Worksheet

Wilcom EmbroideryStudio - Designing



Design: **5**

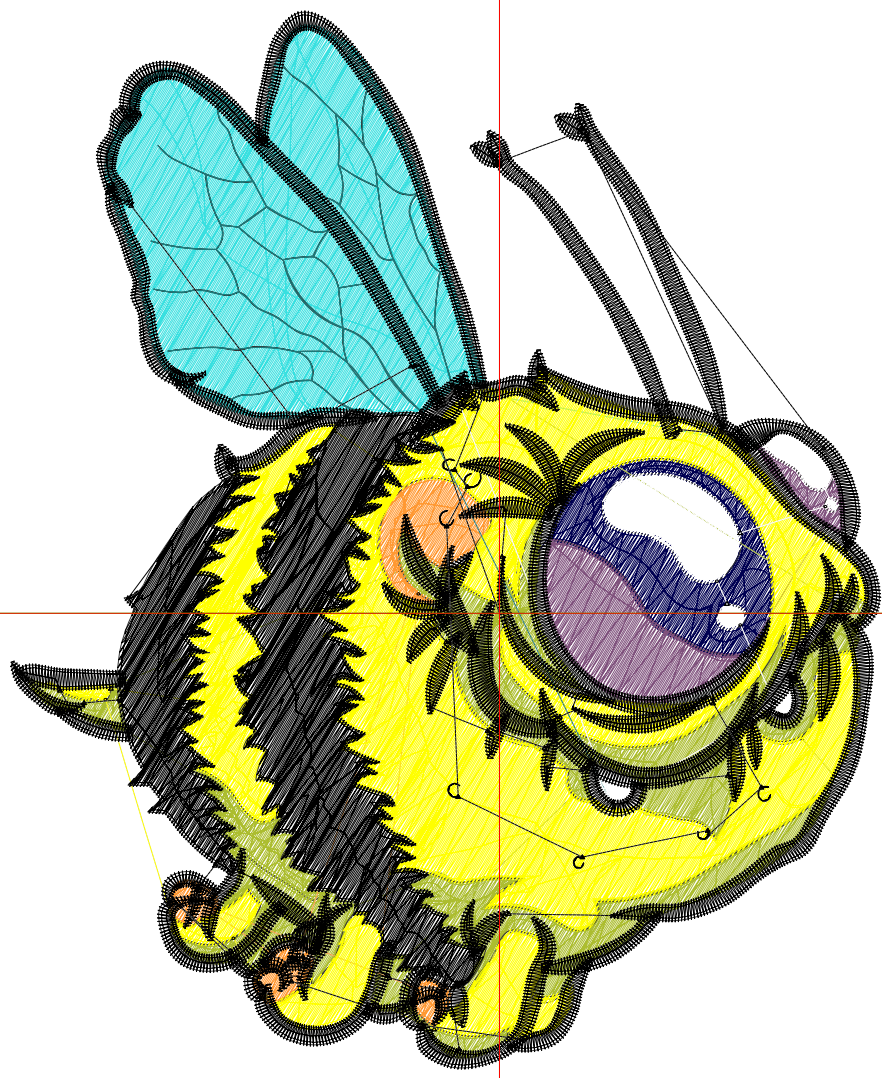
Title:

Stitches: 34,680
Height: 5.51 in
Width: 4.53 in
Colors: 9
Colorway: Colorway 1
Zoom: 1:1

Machine format: Tajima
Color changes: 8
Stops: 9
Trims: 64
Appliqués: 0
Left: 64.7 mm
Right: 50.5 mm
Up: 79.7 mm
Down: 60.3 mm
EndX: 0.00 in
EndY: 0.00 in
Area: 24.98 in²
Max stitch: 12.1 mm
Min stitch: 0.0 mm
Max jump: 6.9 mm
Total thread: 584.57ft
Total bobbin: 209.81ft

Stop Sequence:

#	N#	Color	St.	Code	Name	Chart
1.	1		1,050	R0	G0 B82	
2.	2		876	R128	G82 B125	
3.	6		3,075	R56	G224 B224	
4.	7		4,517	R172	G189 B47	
5.	12		791	12	Orange	Default
6.	4		8,824	4	Yellow	Default
7.	3		417	R30	G120 B120	
8.	9		813	9	White	Default
9.	8		14,315	8	Black	Default



Production Worksheet

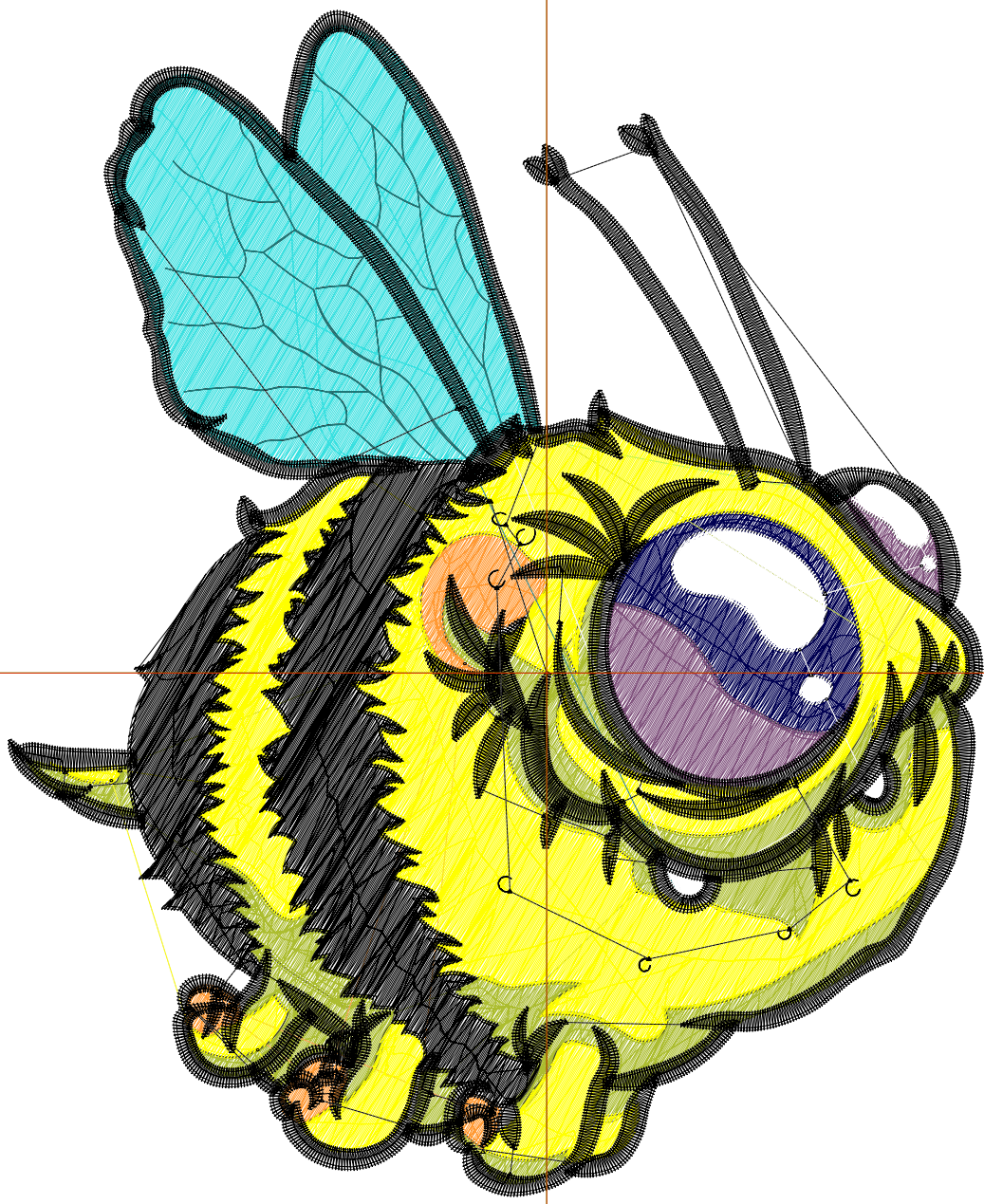
Wilcom EmbroideryStudio - Designing



Design: **6**

Title:

Stitches: 42,989
Height: 6.51 in
Width: 5.35 in
Colors: 9
Colorway: Colorway 1
Zoom: 1:1



Production Worksheet

Wilcom EmbroideryStudio - Designing



Design: **6**

Title:

Stitches: 42,989
 Height: 6.51 in
 Width: 5.35 in
 Colors: 9
 Colorway: Colorway 1
 Zoom: 1:1

Machine format: Tajima
 Color changes: 8
 Stops: 9
 Trims: 65
 Appliqués: 0
 Left: 75.1 mm
 Right: 60.9 mm
 Up: 92.4 mm
 Down: 73.0 mm
 EndX: 0.00 in
 EndY: 0.00 in
 Area 34.86 in²
 Max stitch: 11.6 mm
 Min stitch: 0.0 mm
 Max jump: 7.0 mm
 Total thread: 761.46ft
 Total bobbin: 282.33ft

Stop Sequence:

#	N#	Color	St.	Code	Name	Chart
1.	1		1,295		R0 G0 B82	
2.	2		1,137		R128 G82 B125	
3.	6		4,127		R56 G224 B224	
4.	7		5,580		R172 G189 B47	
5.	12		989	12	Orange	Default
6.	4		11,152	4	Yellow	Default
7.	3		477		R30 G120 B120	
8.	9		1,018	9	White	Default
9.	8		17,212	8	Black	Default