

Production Worksheet

Wilcom EmbroideryStudio - Designing



Design: **3**

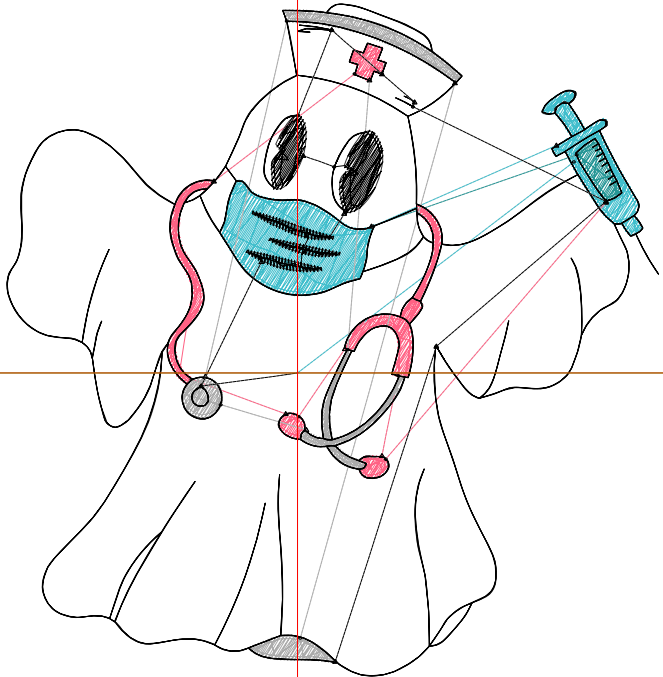
Title:

Stitches: 4,633
 Height: 3.50 in
 Width: 3.39 in
 Colors: 5
 Colorway: Colorway 1
 Zoom: 1:1

Machine format: Tajima
 Color changes: 4
 Stops: 5
 Trims: 21
 Appliqués: 0
 Left: 38.4 mm
 Right: 47.8 mm
 Up: 48.8 mm
 Down: 40.1 mm
 EndX: 0.00 in
 EndY: 0.00 in
 Area: 11.87 in²
 Max stitch: 7.0 mm
 Min stitch: 0.2 mm
 Max jump: 7.0 mm
 Total thread: 64.24ft
 Total bobbin: 19.08ft

Stop Sequence:

#	N#	Color	St.	Code	Name	Chart
1.	3		887		R64 G190 B204	
2.	1		120		R38 G150 B150	
3.	5		822		R255 G98 B132	
4.	4		836		R171 G171 B171	
5.	8		1,966	8	Black	Default



Production Worksheet

Wilcom EmbroideryStudio - Designing



Design: **4**

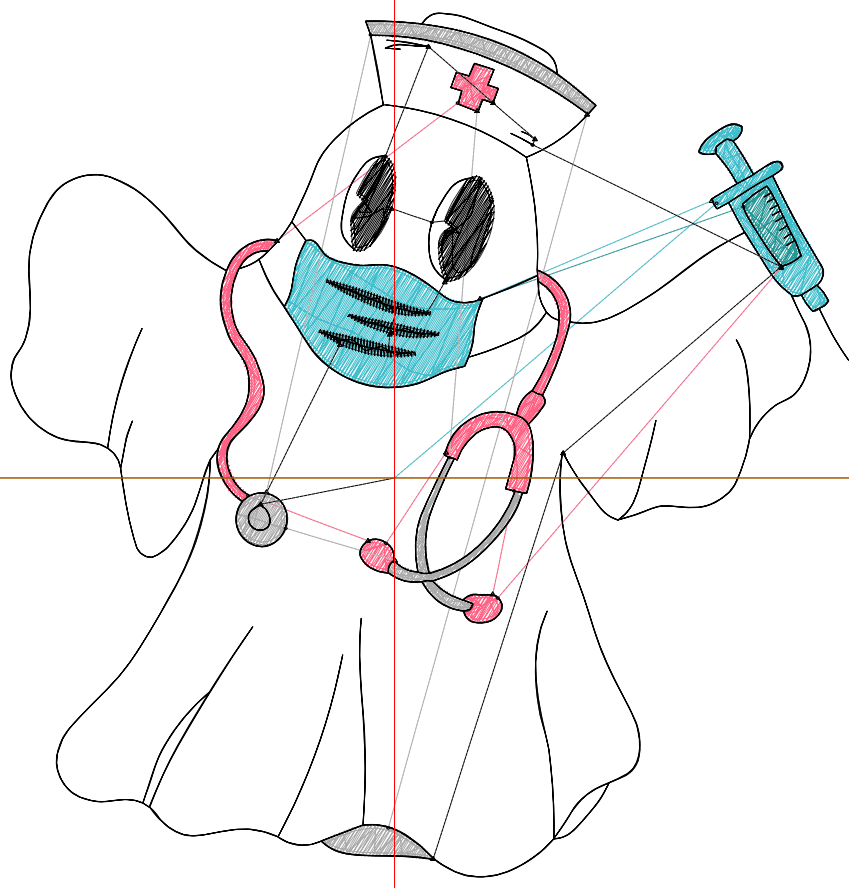
Title:

Stitches: 5,951
Height: 4.50 in
Width: 4.36 in
Colors: 5
Colorway: Colorway 1
Zoom: 1:1

Machine format: Tajima
Color changes: 4
Stops: 5
Trims: 22
Appliqués: 0
Left: 50.8 mm
Right: 60.1 mm
Up: 61.5 mm
Down: 52.8 mm
EndX: 0.00 in
EndY: 0.00 in
Area: 19.63 in²
Max stitch: 7.0 mm
Min stitch: 0.2 mm
Max jump: 7.0 mm
Total thread: 87.24ft
Total bobbin: 27.59ft

Stop Sequence:

#	N#	Color	St.	Code	Name	Chart
1.	3		1,260	R64	G190 B204	
2.	1		150	R38	G150 B150	
3.	5		1,073	R255	G98 B132	
4.	4		1,081	R171	G171 B171	
5.	8		2,385	8	Black	Default



Production Worksheet

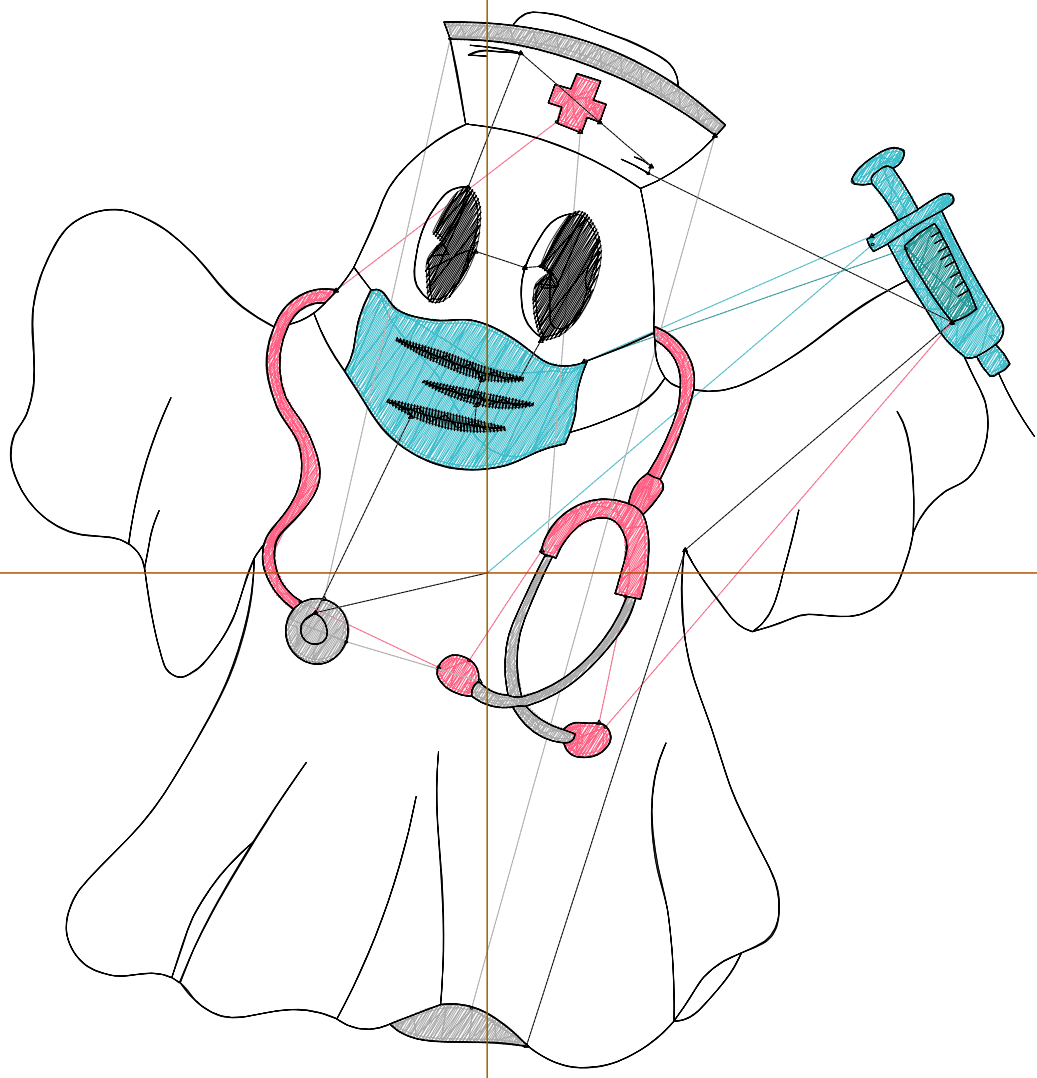
Wilcom EmbroideryStudio - Designing



Design: **5**

Title:

Stitches: 7,421
Height: 5.50 in
Width: 5.33 in
Colors: 5
Colorway: Colorway 1
Zoom: 1:1



Production Worksheet

Wilcom EmbroideryStudio - Designing



Design: **5**

Title:

Stitches: 7,421
 Height: 5.50 in
 Width: 5.33 in
 Colors: 5
 Colorway: Colorway 1
 Zoom: 1:1

Machine format: Tajima
 Color changes: 4
 Stops: 5
 Trims: 24
 Appliqués: 0
 Left: 63.0 mm
 Right: 72.4 mm
 Up: 74.2 mm
 Down: 65.4 mm
 EndX: 0.00 in
 EndY: 0.00 in
 Area 29.32 in²
 Max stitch: 6.8 mm
 Min stitch: 0.2 mm
 Max jump: 6.8 mm
 Total thread: 113.96ft
 Total bobbin: 37.70ft

Stop Sequence:

#	N#	Color	St.	Code	Name	Chart
1.	3		1,691		R64 G190 B204	
2.	1		199		R38 G150 B150	
3.	5		1,370		R255 G98 B132	
4.	4		1,349		R171 G171 B171	
5.	8		2,810	8	Black	Default

Production Worksheet

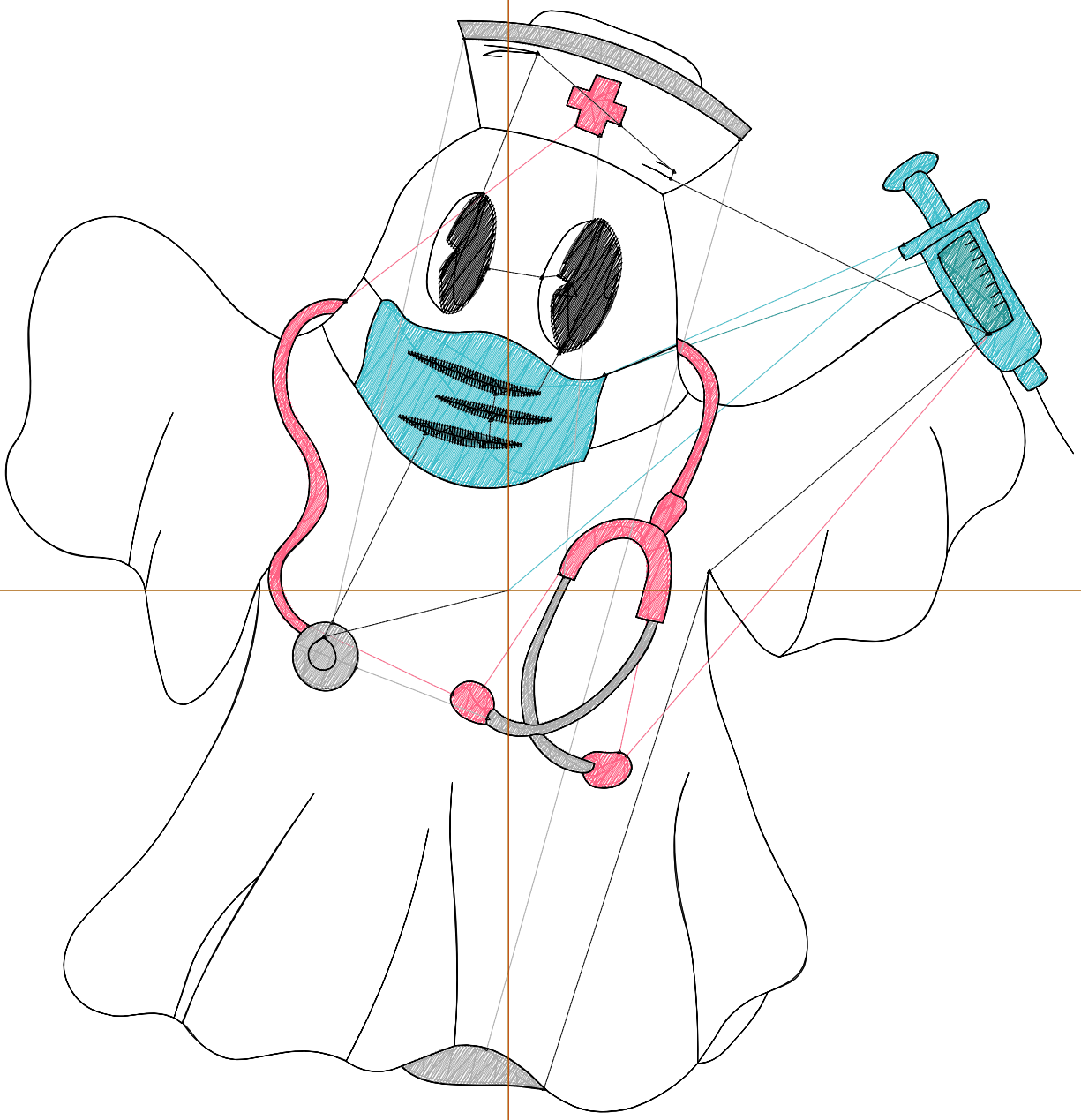
Wilcom EmbroideryStudio - Designing



Design: **6**

Title:

Stitches: 8,810
Height: 6.50 in
Width: 6.30 in
Colors: 5
Colorway: Colorway 1
Zoom: 1:1



1

2

2

Production Worksheet

Wilcom EmbroideryStudio - Designing



Design: **6**

Title:

Stitches: 8,810
 Height: 6.50 in
 Width: 6.30 in
 Colors: 5
 Colorway: Colorway 1
 Zoom: 1:1

Machine format: Tajima
 Color changes: 4
 Stops: 5
 Trims: 24
 Appliqués: 0
 Left: 75.4 mm
 Right: 84.7 mm
 Up: 86.9 mm
 Down: 78.2 mm
 EndX: 0.00 in
 EndY: 0.00 in
 Area 40.96 in²
 Max stitch: 6.9 mm
 Min stitch: 0.1 mm
 Max jump: 7.0 mm
 Total thread: 141.97ft
 Total bobbin: 48.90ft

Stop Sequence:

#	N#	Color	St.	Code	Name	Chart
1.	3		2,127		R64 G190 B204	
2.	1		247		R38 G150 B150	
3.	5		1,604		R255 G98 B132	
4.	4		1,600		R171 G171 B171	
5.	8		3,230	8	Black	Default

Production Worksheet

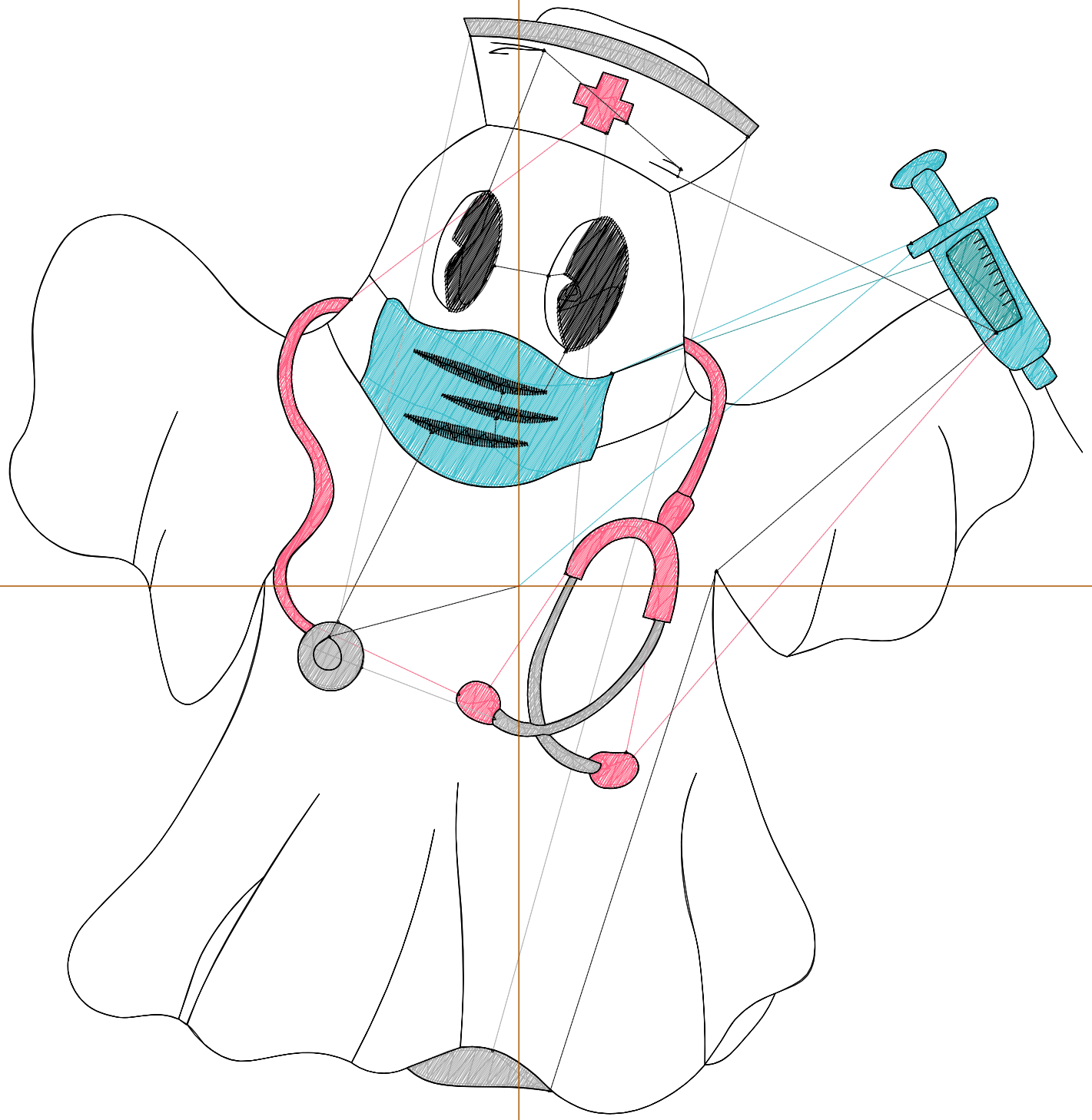
Wilcom EmbroideryStudio - Designing



Design: **7**

Title:

Stitches: 10,509
Height: 7.50 in
Width: 7.27 in
Colors: 5
Colorway: Colorway 1
Zoom: 1:1



Production Worksheet

Wilcom EmbroideryStudio - Designing



Design: **7**

Title:

Stitches: 10,509
 Height: 7.50 in
 Width: 7.27 in
 Colors: 5
 Colorway: Colorway 1
 Zoom: 1:1

Machine format: Tajima
 Color changes: 4
 Stops: 5
 Trims: 24
 Appliqués: 0
 Left: 87.7 mm
 Right: 97.0 mm
 Up: 99.6 mm
 Down: 90.9 mm
 EndX: 0.00 in
 EndY: 0.00 in
 Area 54.54 in²
 Max stitch: 6.9 mm
 Min stitch: 0.1 mm
 Max jump: 7.0 mm
 Total thread: 175.37ft
 Total bobbin: 62.09ft

Stop Sequence:

#	N#	Color	St.	Code	Name	Chart
1.	3		2,637		R64 G190 B204	
2.	1		295		R38 G150 B150	
3.	5		1,948		R255 G98 B132	
4.	4		1,941		R171 G171 B171	
5.	8		3,686	8	Black	Default