

Production Worksheet

Wilcom EmbroideryStudio - Designing



Design: **3**

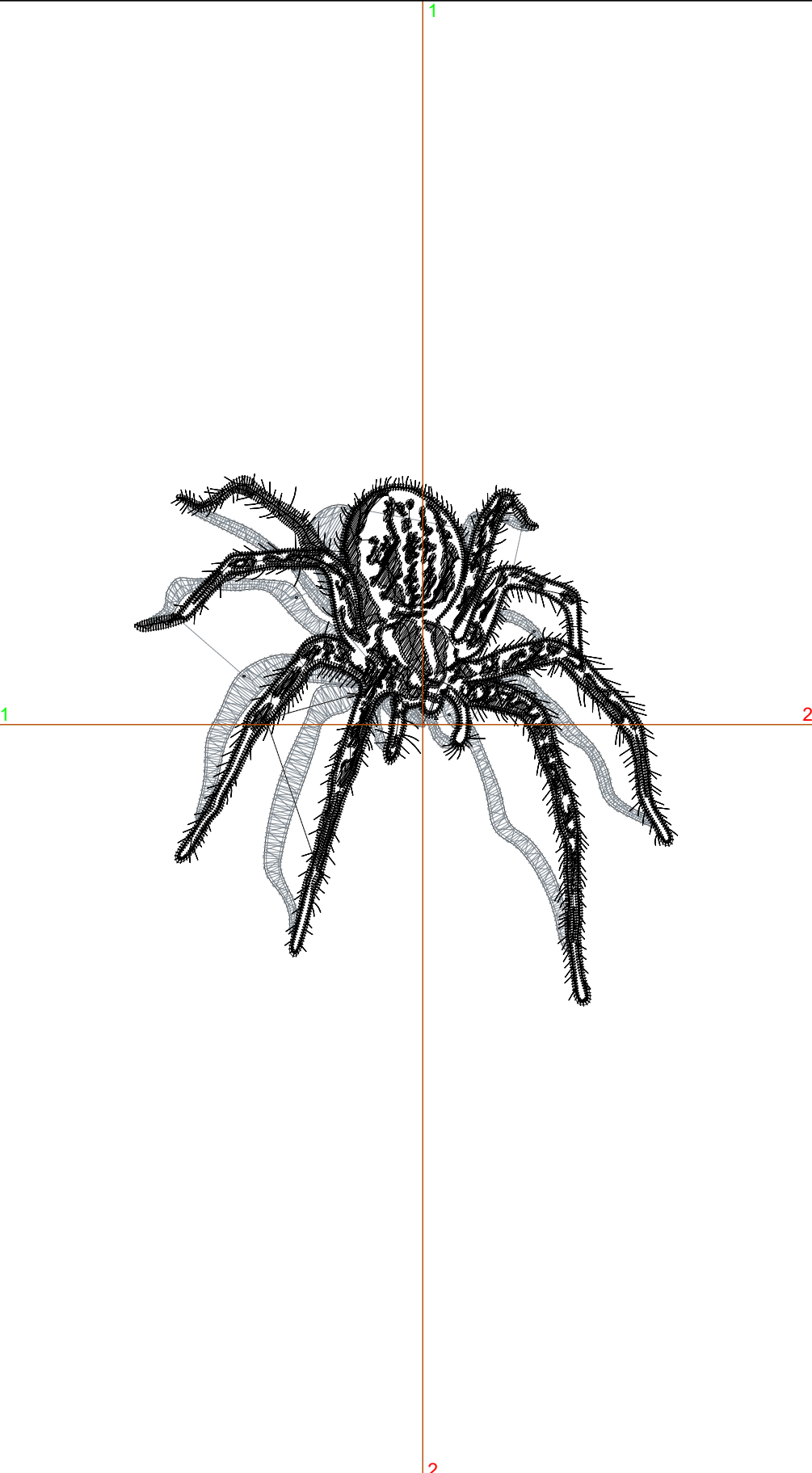
Title:

Stitches: 14,977
 Height: 3.43 in
 Width: 3.50 in
 Colors: 2
 Colorway: Colorway 1
 Zoom: 1:1

Machine format: Tajima
 Color changes: 1
 Stops: 2
 Trims: 25
 Appliqués: 0
 Left: 47.2 mm
 Right: 41.7 mm
 Up: 41.0 mm
 Down: 46.1 mm
 EndX: 0.00 in
 EndY: 0.00 in
 Area 12.00 in²
 Max stitch: 6.0 mm
 Min stitch: 0.0 mm
 Max jump: 6.0 mm
 Total thread: 182.79ft
 Total bobbin: 49.70ft

Stop Sequence:

#	N#	Color	St.	Code	Name	Chart
1.	4		2,647	R131	G140 B148	
2.	8		12,328	R0	G0 B0	



Production Worksheet

Wilcom EmbroideryStudio - Designing



Design: **4**

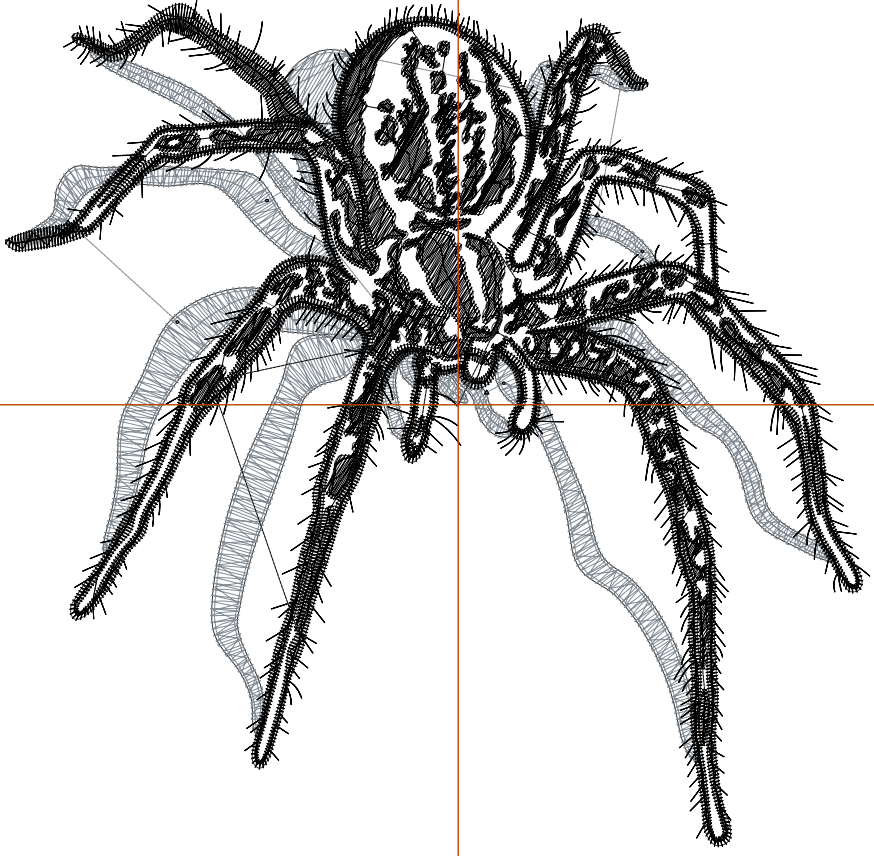
Title:

Stitches: 19,262
Height: 4.41 in
Width: 4.50 in
Colors: 2
Colorway: Colorway 1
Zoom: 1:1

Machine format: Tajima
Color changes: 1
Stops: 2
Trims: 28
Appliqués: 0
Left: 59.9 mm
Right: 54.4 mm
Up: 53.5 mm
Down: 58.5 mm
EndX: 0.00 in
EndY: 0.00 in
Area 19.84 in²
Max stitch: 8.1 mm
Min stitch: 0.0 mm
Max jump: 6.2 mm
Total thread: 250.43ft
Total bobbin: 73.12ft

Stop Sequence:

#	N#	Color	St.	Code	Name	Chart
1.	4		3,333	R131	G140 B148	
2.	8		15,927	R0	G0 B0	



Production Worksheet

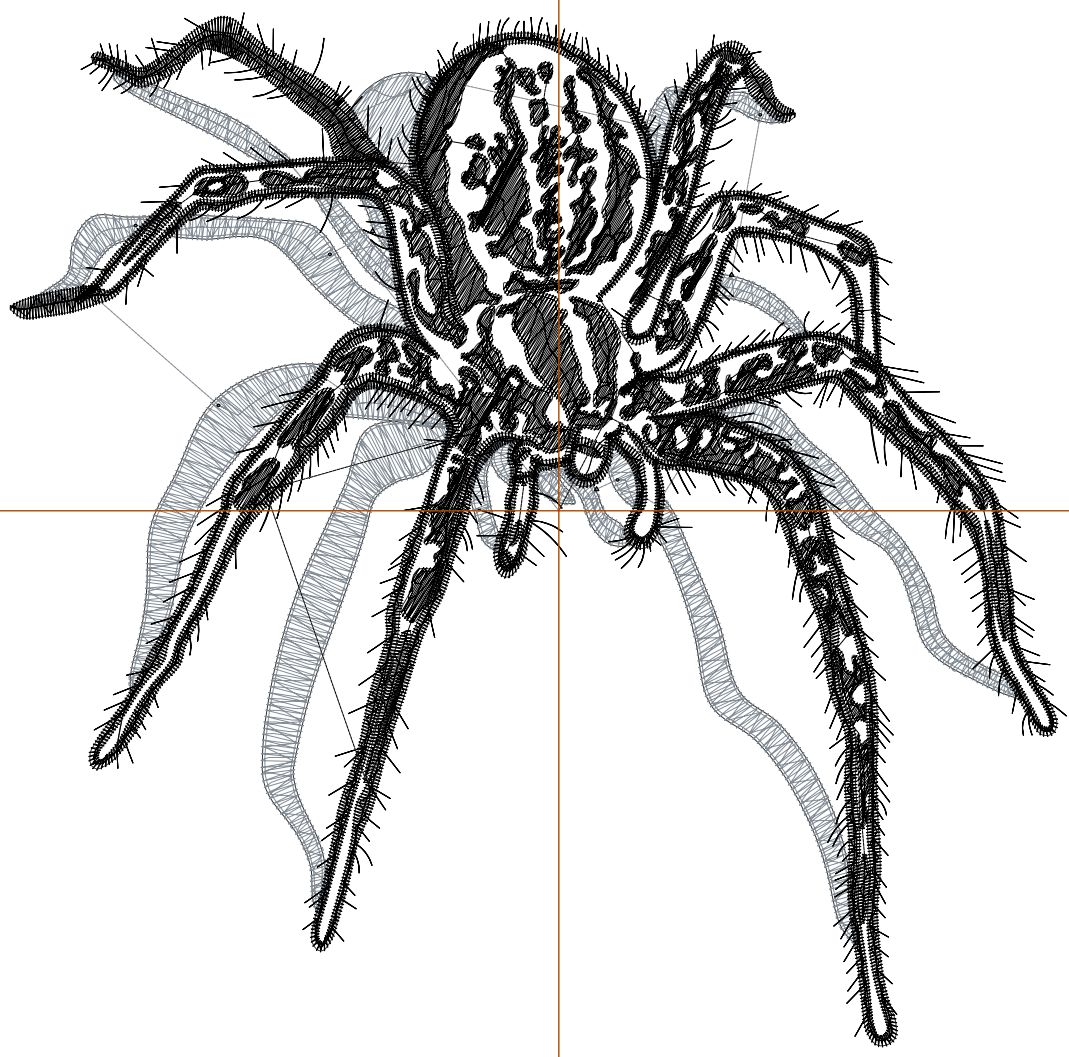
Wilcom EmbroideryStudio - Designing



Design: **5**

Title:

Stitches: 23,565
Height: 5.39 in
Width: 5.50 in
Colors: 2
Colorway: Colorway 1
Zoom: 1:1



1

1

2

2

Production Worksheet

Wilcom EmbroideryStudio - Designing



Design: **5**

Title:

Stitches: 23,565
 Height: 5.39 in
 Width: 5.50 in
 Colors: 2
 Colorway: Colorway 1
 Zoom: 1:1

Machine format: Tajima
 Color changes: 1
 Stops: 2
 Trims: 29
 Appliqués: 0
 Left: 72.6 mm
 Right: 67.1 mm
 Up: 65.9 mm
 Down: 70.9 mm
 EndX: 0.00 in
 EndY: 0.00 in
 Area 29.62 in²
 Max stitch: 10.0 mm
 Min stitch: 0.0 mm
 Max jump: 7.0 mm
 Total thread: 324.14ft
 Total bobbin: 100.07ft

Stop Sequence:

#	N#	Color	St.	Code	Name	Chart
1.	4		4,088		R131 G140 B148	
2.	8		19,475		R0 G0 B0	

Production Worksheet

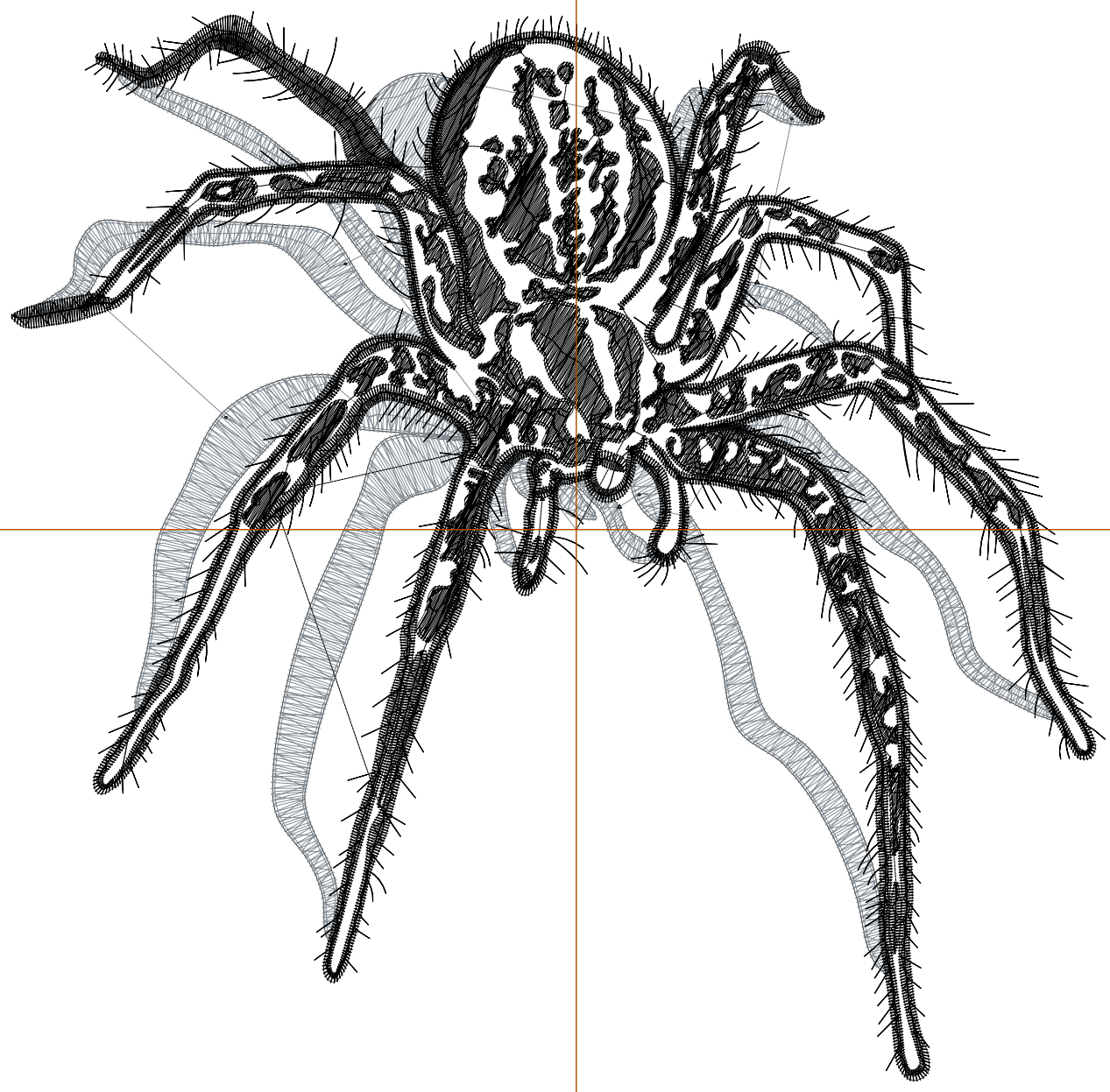
Wilcom EmbroideryStudio - Designing



Design: **6**

Title:

Stitches: 28,171
Height: 6.36 in
Width: 6.50 in
Colors: 2
Colorway: Colorway 1
Zoom: 1:1



Production Worksheet

Wilcom EmbroideryStudio - Designing



Design: **6**

Title:

Stitches: 28,171
 Height: 6.36 in
 Width: 6.50 in
 Colors: 2
 Colorway: Colorway 1
 Zoom: 1:1

Machine format: Tajima
 Color changes: 1
 Stops: 2
 Trims: 33
 Appliqués: 0
 Left: 85.3 mm
 Right: 79.8 mm
 Up: 78.3 mm
 Down: 83.3 mm
 EndX: 0.00 in
 EndY: 0.00 in
 Area 41.37 in²
 Max stitch: 6.9 mm
 Min stitch: 0.0 mm
 Max jump: 6.9 mm
 Total thread: 407.76ft
 Total bobbin: 131.71ft

Stop Sequence:

#	N#	Color	St.	Code	Name	Chart
1.	4		4,911		R131 G140 B148	
2.	8		23,258		R0 G0 B0	

Production Worksheet

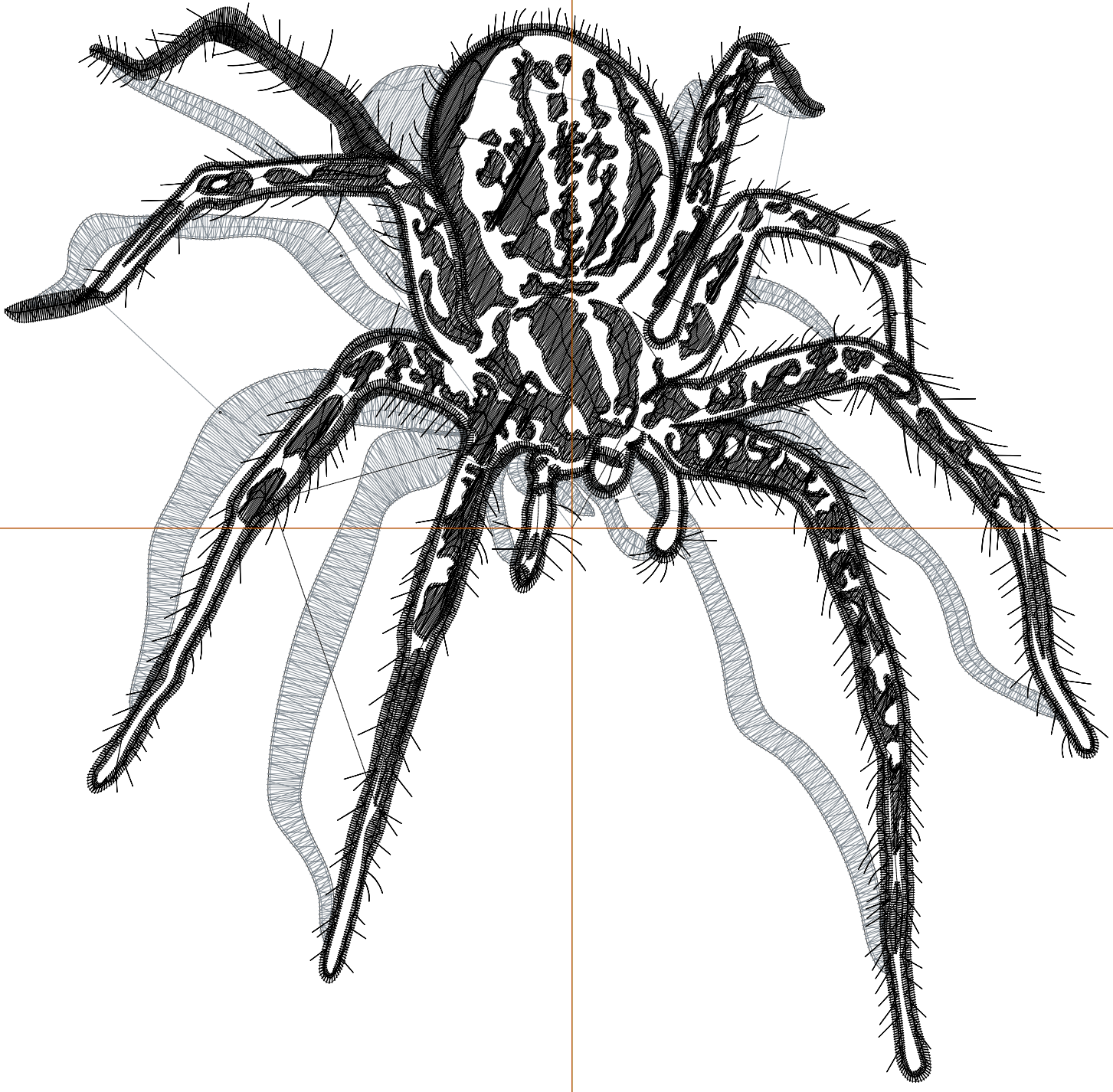
Wilcom EmbroideryStudio - Designing



Design: **7**

Title:

Stitches: 32,829
Height: 7.34 in
Width: 7.50 in
Colors: 2
Colorway: Colorway 1
Zoom: 1:1



Production Worksheet

Wilcom EmbroideryStudio - Designing



Design: **7**

Title:

Stitches: 32,829
 Height: 7.34 in
 Width: 7.50 in
 Colors: 2
 Colorway: Colorway 1
 Zoom: 1:1

Machine format: Tajima
 Color changes: 1
 Stops: 2
 Trims: 37
 Appliqués: 0
 Left: 98.0 mm
 Right: 92.5 mm
 Up: 90.7 mm
 Down: 95.8 mm
 EndX: 0.00 in
 EndY: 0.00 in
 Area 55.07 in²
 Max stitch: 9.9 mm
 Min stitch: 0.0 mm
 Max jump: 7.0 mm
 Total thread: 497.92ft
 Total bobbin: 167.02ft

Stop Sequence:

#	N#	Color	St.	Code	Name	Chart
1.	4		5,869		R131 G140 B148	
2.	8		26,958		R0 G0 B0	