

Production Worksheet

Wilcom EmbroideryStudio - Designing



Design: **3**

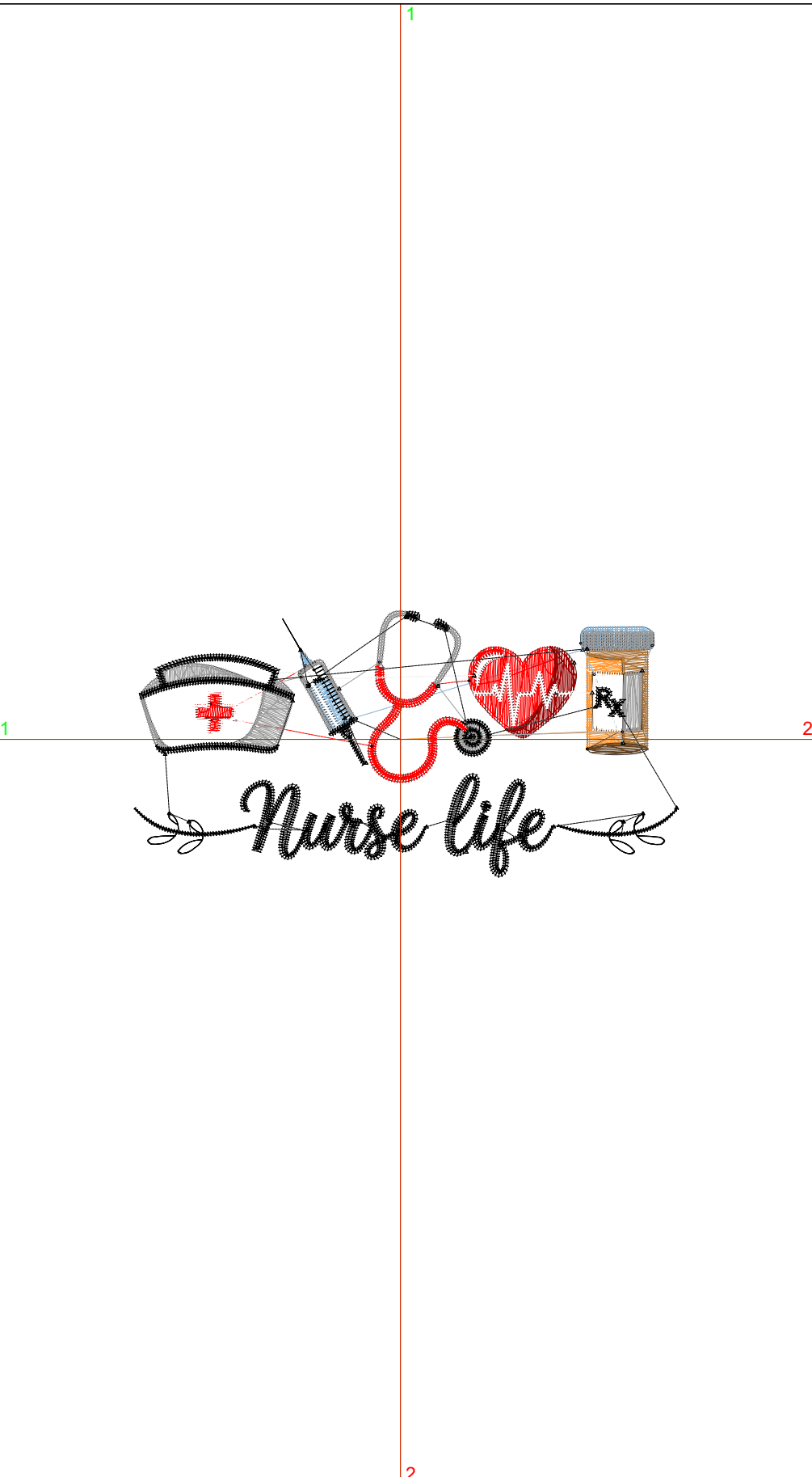
Title:

Stitches: 8,013
 Height: 1.72 in
 Width: 3.51 in
 Colors: 9
 Colorway: Colorway 1
 Zoom: 1:1

Machine format: Tajima
 Color changes: 8
 Stops: 9
 Trims: 50
 Appliqués: 0
 Left: 43.6 mm
 Right: 45.5 mm
 Up: 21.1 mm
 Down: 22.6 mm
 EndX: 0.00 in
 EndY: 0.00 in
 Area: 6.04 in²
 Max stitch: 9.1 mm
 Min stitch: 0.0 mm
 Max jump: 6.4 mm
 Total thread: 104.62ft
 Total bobbin: 29.09ft

Stop Sequence:

#	N#	Color	St.	Code	Name	Chart
1.	12		265	12	Orange	Default
2.	5		239		R173 G116 B58	
3.	4		53		R99 G66 B33	
4.	7		430		R136 G183 B217	
5.	3		887	3	Red	Default
6.	11		214	11	Dark Red	Default
7.	9		1,341	9	White	Default
8.	1		1,467		R156 G156 B156	
9.	8		3,115	8	Black	Default



Production Worksheet

Wilcom EmbroideryStudio - Designing



Design: **4**

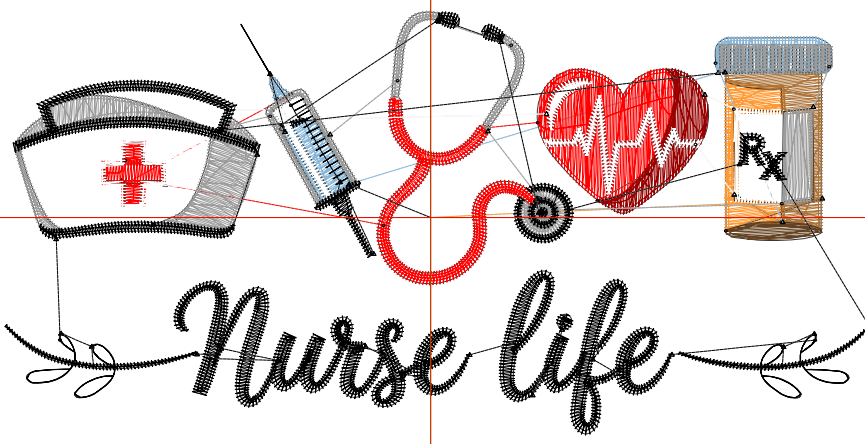
Title:

Stitches: 10,396
 Height: 2.21 in
 Width: 4.51 in
 Colors: 9
 Colorway: Colorway 1
 Zoom: 1:1

Machine format: Tajima
 Color changes: 8
 Stops: 9
 Trims: 53
 Appliqués: 0
 Left: 56.3 mm
 Right: 58.2 mm
 Up: 27.3 mm
 Down: 28.8 mm
 EndX: 0.00 in
 EndY: 0.00 in
 Area: 9.97 in²
 Max stitch: 11.8 mm
 Min stitch: 0.0 mm
 Max jump: 6.9 mm
 Total thread: 145.28ft
 Total bobbin: 43.92ft

Stop Sequence:

#	N#	Color	St.	Code	Name	Chart
1.	12		386	12	Orange	Default
2.	5		337		R173 G116 B58	
3.	4		78		R99 G66 B33	
4.	7		568		R136 G183 B217	
5.	3		1,182	3	Red	Default
6.	11		290	11	Dark Red	Default
7.	9		1,842	9	White	Default
8.	1		1,847		R156 G156 B156	
9.	8		3,864	8	Black	Default



Production Worksheet

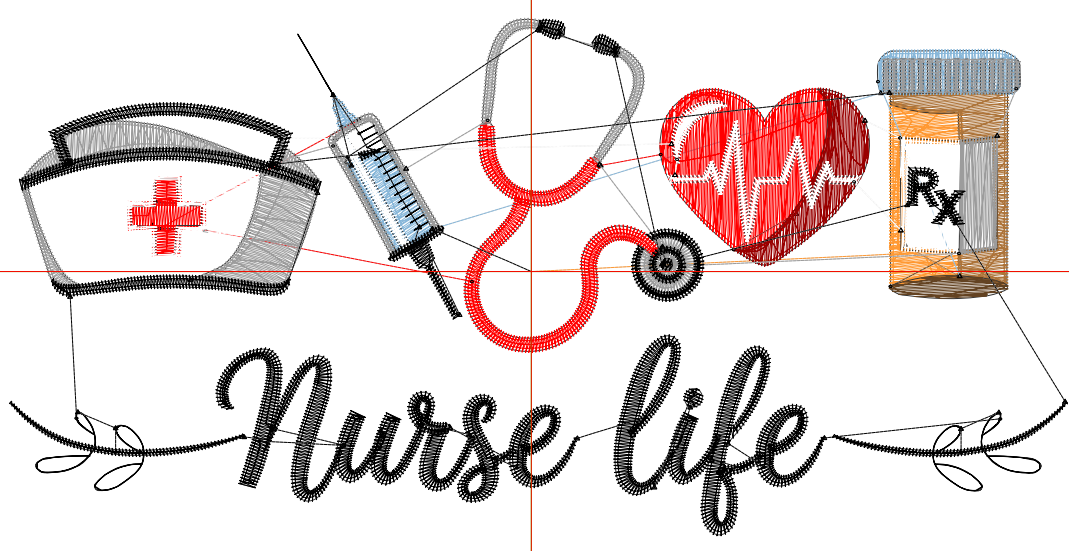
Wilcom EmbroideryStudio - Designing



Design: **5**

Title:

Stitches: 12,966
Height: 2.70 in
Width: 5.51 in
Colors: 9
Colorway: Colorway 1
Zoom: 1:1



Production Worksheet

Wilcom EmbroideryStudio - Designing



Design: **5**

Title:

Stitches: 12,966
 Height: 2.70 in
 Width: 5.51 in
 Colors: 9
 Colorway: Colorway 1
 Zoom: 1:1

Machine format: Tajima
 Color changes: 8
 Stops: 9
 Trims: 56
 Appliqués: 0
 Left: 69.0 mm
 Right: 70.9 mm
 Up: 33.5 mm
 Down: 35.0 mm
 EndX: 0.00 in
 EndY: 0.00 in
 Area 14.86 in²
 Max stitch: 8.9 mm
 Min stitch: 0.0 mm
 Max jump: 6.9 mm
 Total thread: 192.45ft
 Total bobbin: 61.88ft

Stop Sequence:

#	N#	Color	St.	Code	Name	Chart
1.	12		476	12	Orange	Default
2.	5		440		R173 G116 B58	
3.	4		102		R99 G66 B33	
4.	7		730		R136 G183 B217	
5.	3		1,495	3	Red	Default
6.	11		388	11	Dark Red	Default
7.	9		2,362	9	White	Default
8.	1		2,341		R156 G156 B156	
9.	8		4,630	8	Black	Default

Production Worksheet

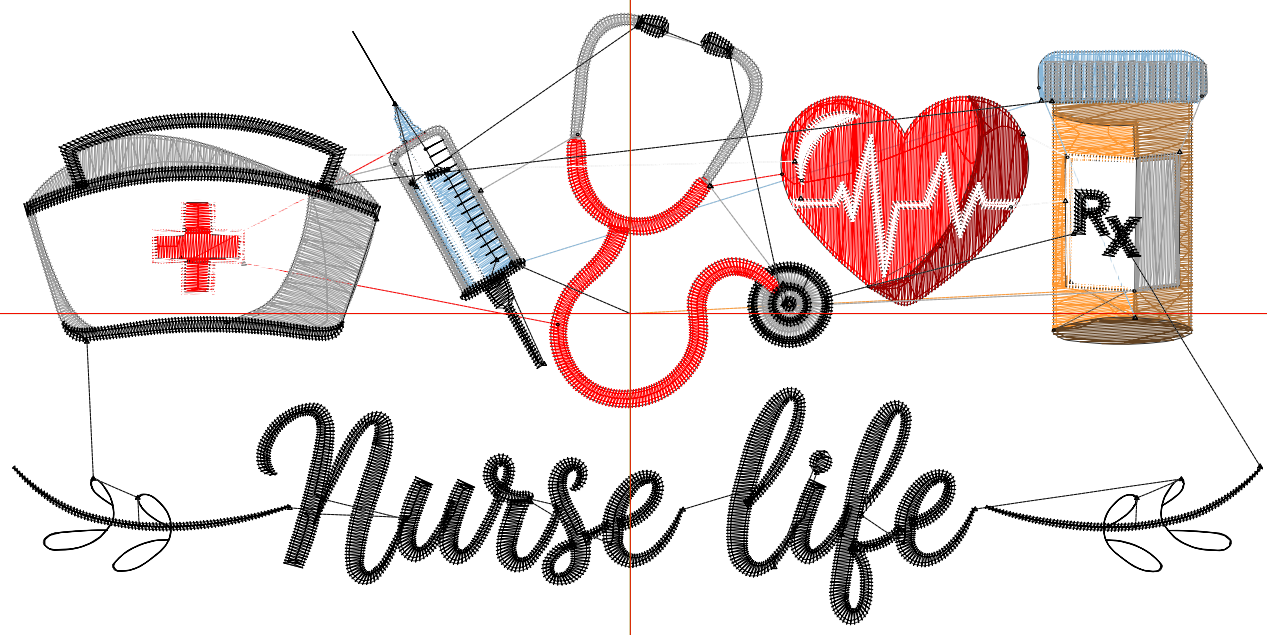
Wilcom EmbroideryStudio - Designing



Design: **6**

Title:

Stitches: 15,705
Height: 3.19 in
Width: 6.51 in
Colors: 9
Colorway: Colorway 1
Zoom: 1:1



Production Worksheet

Wilcom EmbroideryStudio - Designing



Design: **6**

Title:

Stitches: 15,705
 Height: 3.19 in
 Width: 6.51 in
 Colors: 9
 Colorway: Colorway 1
 Zoom: 1:1

Machine format: Tajima
 Color changes: 8
 Stops: 9
 Trims: 57
 Appliqués: 0
 Left: 81.7 mm
 Right: 83.6 mm
 Up: 39.7 mm
 Down: 41.2 mm
 EndX: 0.00 in
 EndY: 0.00 in
 Area 20.74 in²
 Max stitch: 10.5 mm
 Min stitch: 0.0 mm
 Max jump: 6.9 mm
 Total thread: 245.34ft
 Total bobbin: 82.57ft

Stop Sequence:

#	N#	Color	St.	Code	Name	Chart
1.	12		580	12	Orange	Default
2.	5		540		R173 G116 B58	
3.	4		124		R99 G66 B33	
4.	7		905		R136 G183 B217	
5.	3		1,839	3	Red	Default
6.	11		483	11	Dark Red	Default
7.	9		2,975	9	White	Default
8.	1		2,870		R156 G156 B156	
9.	8		5,387	8	Black	Default

Production Worksheet

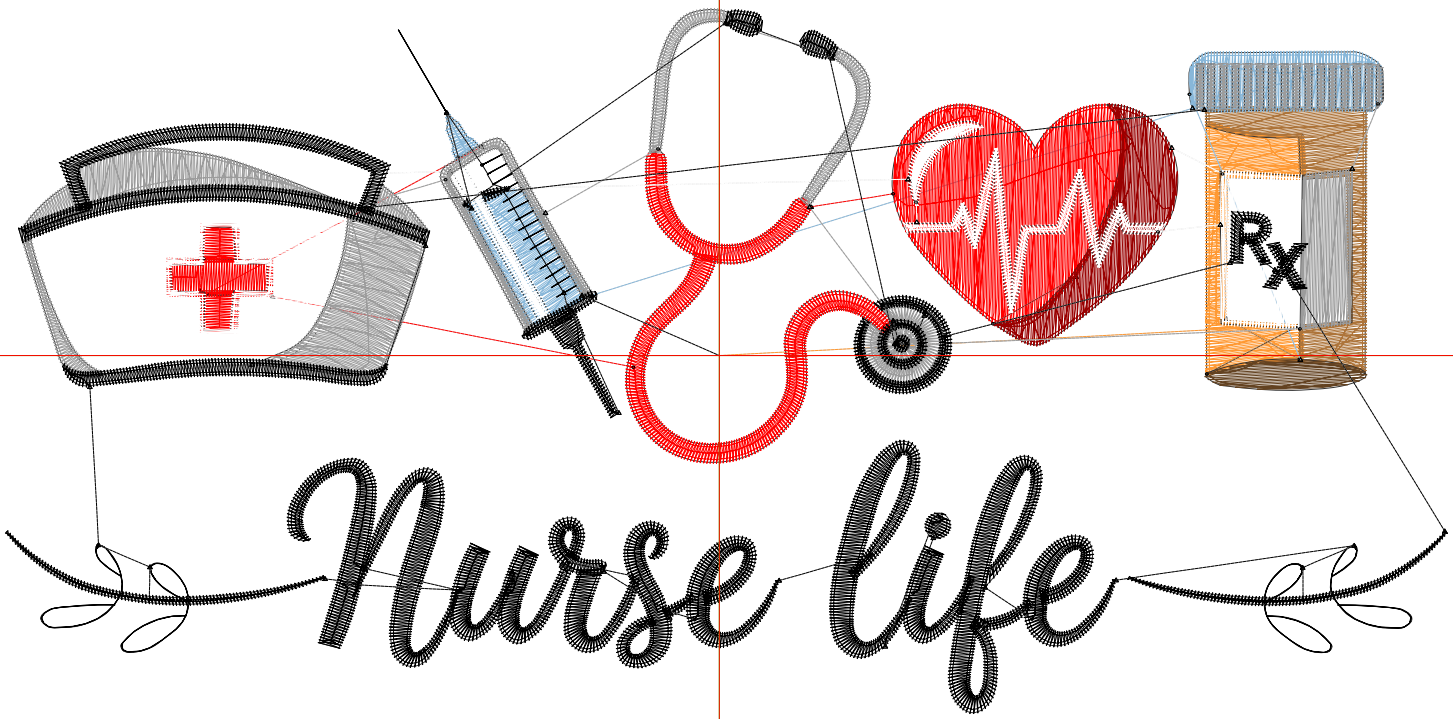
Wilcom EmbroideryStudio - Designing



Design: 7

Title:

Stitches: 18,672
Height: 3.67 in
Width: 7.51 in
Colors: 9
Colorway: Colorway 1
Zoom: 1:1



Production Worksheet

Wilcom EmbroideryStudio - Designing



Design: **7**

Title:

Stitches: 18,672
 Height: 3.67 in
 Width: 7.51 in
 Colors: 9
 Colorway: Colorway 1
 Zoom: 1:1

Machine format: Tajima
 Color changes: 8
 Stops: 9
 Trims: 59
 Appliqués: 0
 Left: 94.4 mm
 Right: 96.3 mm
 Up: 45.9 mm
 Down: 47.4 mm
 EndX: 0.00 in
 EndY: 0.00 in
 Area 27.59 in²
 Max stitch: 11.0 mm
 Min stitch: 0.1 mm
 Max jump: 7.0 mm
 Total thread: 304.93ft
 Total bobbin: 106.34ft

Stop Sequence:

#	N#	Color	St.	Code	Name	Chart
1.	12		692	12	Orange	Default
2.	5		647		R173 G116 B58	
3.	4		152		R99 G66 B33	
4.	7		1,098		R136 G183 B217	
5.	3		2,225	3	Red	Default
6.	11		592	11	Dark Red	Default
7.	9		3,679	9	White	Default
8.	1		3,430		R156 G156 B156	
9.	8		6,155	8	Black	Default