

# Production Worksheet

Wilcom EmbroideryStudio - Designing

Stitches: 15,235  
 Height: 3.51 in  
 Width: 3.13 in  
 Colors: 6  
 Colorway: Colorway 1  
 Zoom: 1:1



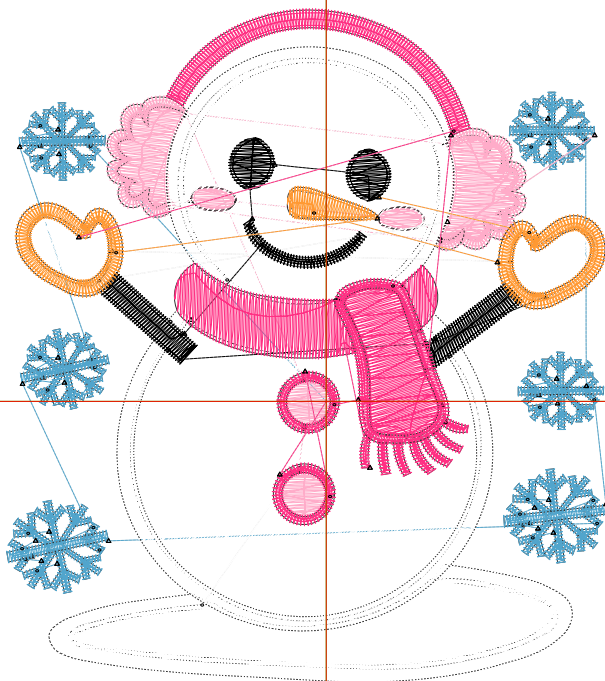
Design: **3**

Title:

Machine format: Tajima  
 Color changes: 5  
 Stops: 6  
 Trims: 58  
 Appliqués: 0  
 Left: 42.3 mm  
 Right: 37.1 mm  
 Up: 52.0 mm  
 Down: 37.3 mm  
 EndX: 0.00 in  
 EndY: 0.00 in  
 Area: 10.99 in<sup>2</sup>  
 Max stitch: 6.9 mm  
 Min stitch: 0.0 mm  
 Max jump: 6.9 mm  
 Total thread: 237.92ft  
 Total bobbin: 80.58ft

Stop Sequence:

#	N#	Color	St.	Code	Name	Chart
1.	3		3,875		R81 G165 B204	
2.	2		1,734		R255 G172 B201	
3.	9		6,144	9	White	Default
4.	8		616	8	Black	Default
5.	12		675	12	Orange	Default
6.	1		2,189		R255 G48 B131	



# Production Worksheet

Wilcom EmbroideryStudio - Designing



Design: **4**

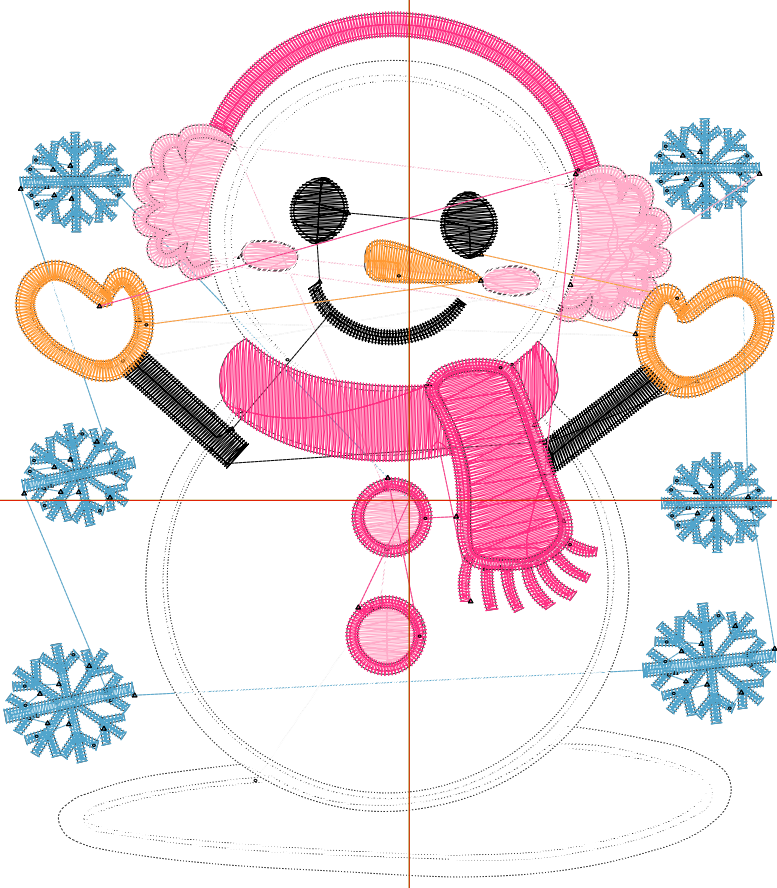
Title:

Stitches: 20,675  
 Height: 4.51 in  
 Width: 4.02 in  
 Colors: 6  
 Colorway: Colorway 1  
 Zoom: 1:1

Machine format: Tajima  
 Color changes: 5  
 Stops: 6  
 Trims: 73  
 Appliqués: 0  
 Left: 53.7 mm  
 Right: 48.5 mm  
 Up: 64.7 mm  
 Down: 50.0 mm  
 EndX: 0.00 in  
 EndY: 0.00 in  
 Area 18.15 in<sup>2</sup>  
 Max stitch: 6.9 mm  
 Min stitch: 0.0 mm  
 Max jump: 6.9 mm  
 Total thread: 351.80ft  
 Total bobbin: 126.91ft

Stop Sequence:

#	N#	Color	St.	Code	Name	Chart
1.	3		4,892		R81 G165 B204	
2.	2		2,340		R255 G172 B201	
3.	9		8,842	9	White	Default
4.	8		795	8	Black	Default
5.	12		862	12	Orange	Default
6.	1		2,942		R255 G48 B131	



# Production Worksheet

Wilcom EmbroideryStudio - Designing



Design: **5**

Title:

Stitches: 26,595  
 Height: 5.51 in  
 Width: 4.91 in  
 Colors: 6  
 Colorway: Colorway 1  
 Zoom: 1:1

Machine format: Tajima  
 Color changes: 5  
 Stops: 6  
 Trims: 82  
 Appliqués: 0  
 Left: 65.0 mm  
 Right: 59.8 mm  
 Up: 77.4 mm  
 Down: 62.7 mm  
 EndX: 0.00 in  
 EndY: 0.00 in  
 Area: 27.09 in<sup>2</sup>  
 Max stitch: 7.0 mm  
 Min stitch: 0.0 mm  
 Max jump: 7.0 mm  
 Total thread: 487.41ft  
 Total bobbin: 184.26ft

Stop Sequence:

#	N#	Color	St.	Code	Name	Chart
1.	3		5,850		R81 G165 B204	
2.	2		2,970		R255 G172 B201	
3.	9		11,914	9	White	Default
4.	8		1,019	8	Black	Default
5.	12		1,061	12	Orange	Default
6.	1		3,779		R255 G48 B131	



# Production Worksheet

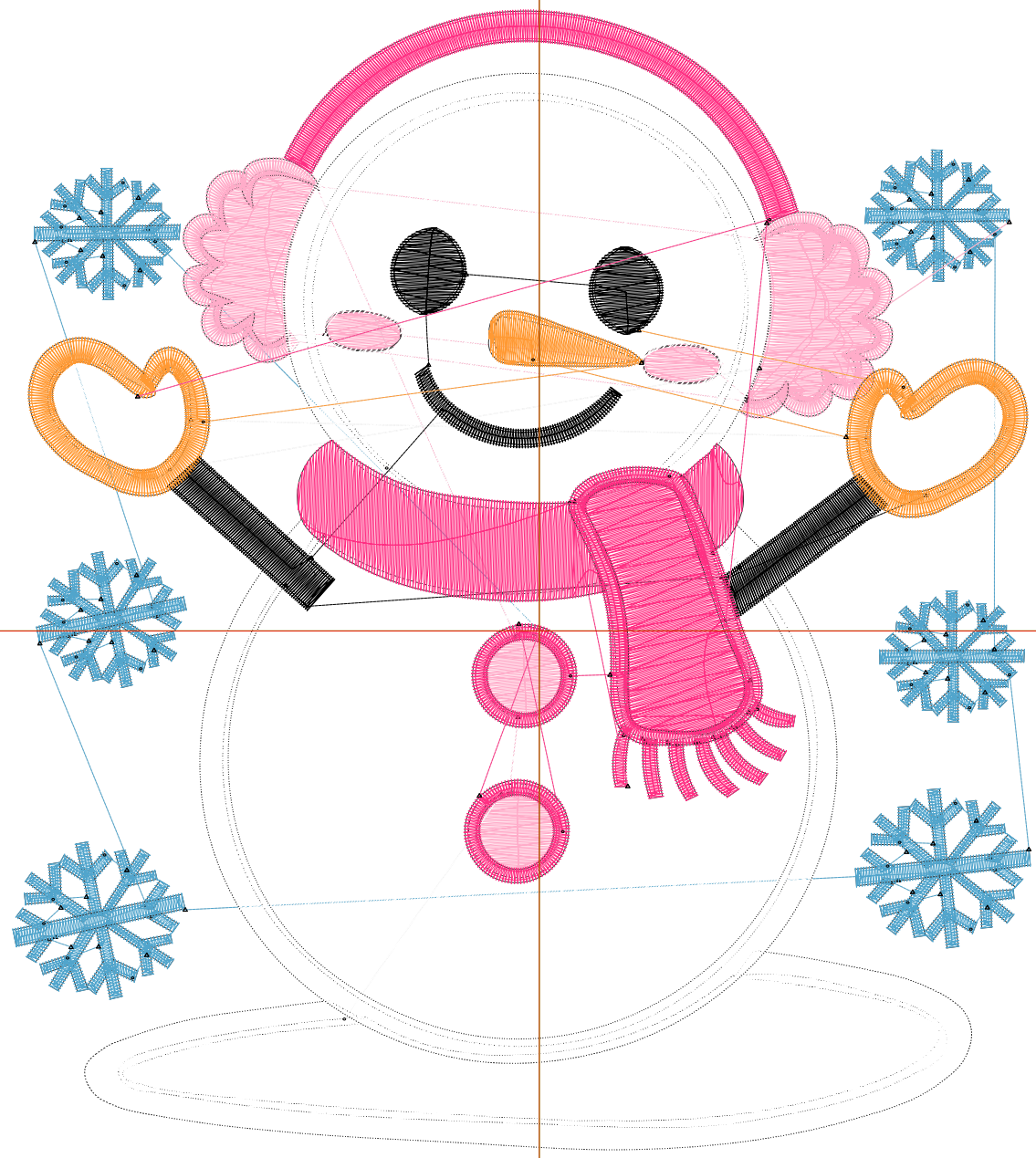
Wilcom EmbroideryStudio - Designing



Design: **6**

Title:

Stitches: 33,028  
Height: 6.51 in  
Width: 5.81 in  
Colors: 6  
Colorway: Colorway 1  
Zoom: 1:1



# Production Worksheet

Wilcom EmbroideryStudio - Designing



Design: **6**

Title:

Stitches: 33,028  
 Height: 6.51 in  
 Width: 5.81 in  
 Colors: 6  
 Colorway: Colorway 1  
 Zoom: 1:1

Machine format: Tajima  
 Color changes: 5  
 Stops: 6  
 Trims: 84  
 Appliqués: 0  
 Left: 76.3 mm  
 Right: 71.2 mm  
 Up: 90.1 mm  
 Down: 75.4 mm  
 EndX: 0.00 in  
 EndY: 0.00 in  
 Area 37.82 in<sup>2</sup>  
 Max stitch: 8.0 mm  
 Min stitch: 0.1 mm  
 Max jump: 7.0 mm  
 Total thread: 643.00ft  
 Total bobbin: 251.44ft

Stop Sequence:

#	N#	Color	St.	Code	Name	Chart
1.	3		6,744		R81 G165 B204	
2.	2		3,673		R255 G172 B201	
3.	9		15,392	9	White	Default
4.	8		1,234	8	Black	Default
5.	12		1,262	12	Orange	Default
6.	1		4,721		R255 G48 B131	

# Production Worksheet

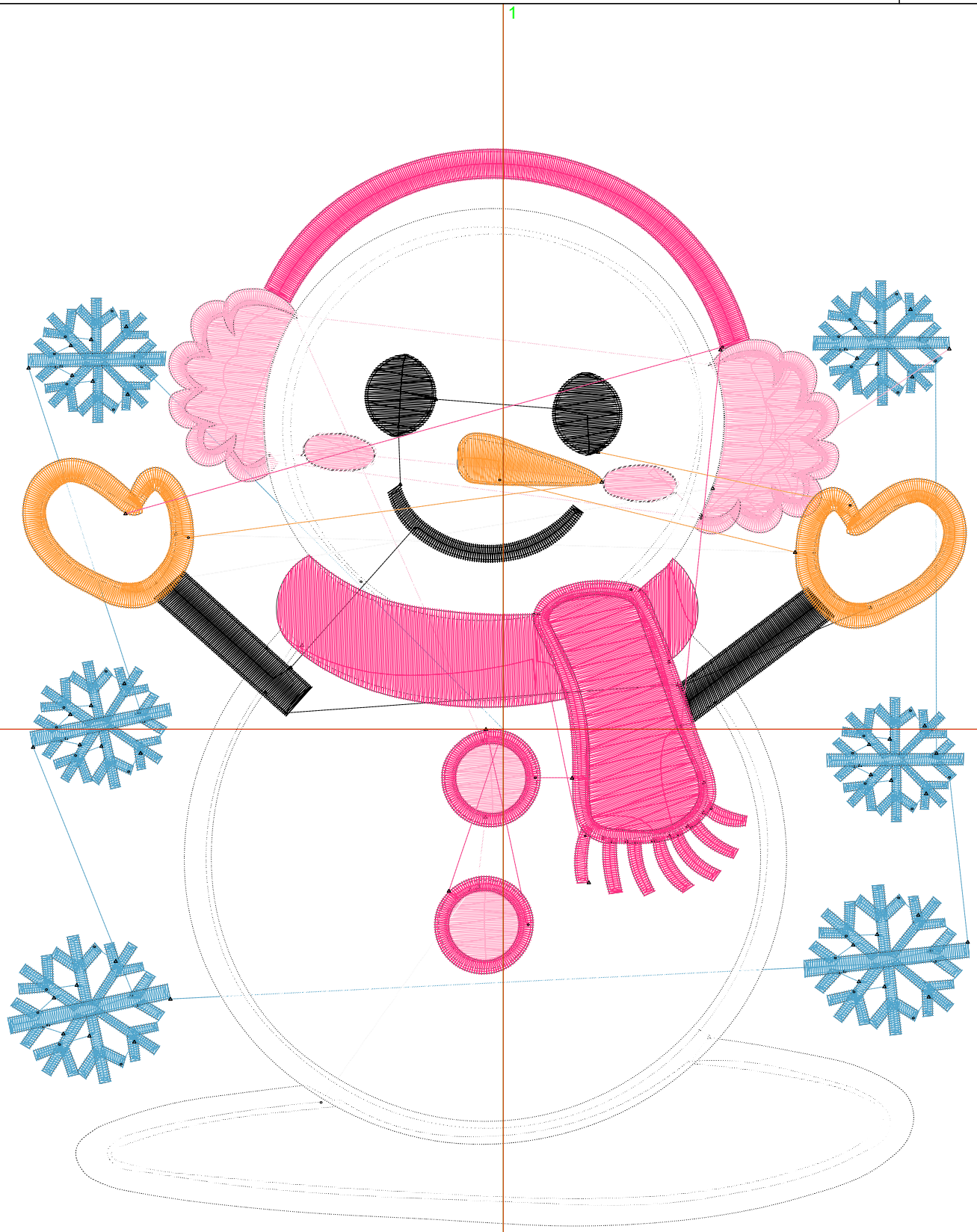
Wilcom EmbroideryStudio - Designing



Design: **7**

Title:

Stitches: 40,156  
Height: 7.51 in  
Width: 6.70 in  
Colors: 6  
Colorway: Colorway 1  
Zoom: 1:1



# Production Worksheet

Wilcom EmbroideryStudio - Designing



Design: **7**

Title:

Stitches: 40,156  
 Height: 7.51 in  
 Width: 6.70 in  
 Colors: 6  
 Colorway: Colorway 1  
 Zoom: 1:1

Machine format: Tajima  
 Color changes: 5  
 Stops: 6  
 Trims: 85  
 Appliqués: 0  
 Left: 87.7 mm  
 Right: 82.5 mm  
 Up: 102.8 mm  
 Down: 88.1 mm  
 EndX: 0.00 in  
 EndY: 0.00 in  
 Area 50.34 in<sup>2</sup>  
 Max stitch: 9.1 mm  
 Min stitch: 0.2 mm  
 Max jump: 7.0 mm  
 Total thread: 825.94ft  
 Total bobbin: 332.14ft

Stop Sequence:

#	N#	Color	St.	Code	Name	Chart
1.	3		7,570		R81 G165 B204	
2.	2		4,417		R255 G172 B201	
3.	9		19,446	9	White	Default
4.	8		1,485	8	Black	Default
5.	12		1,469	12	Orange	Default
6.	1		5,767		R255 G48 B131	