

Production Worksheet

Wilcom EmbroideryStudio - Designing



Design: **3**

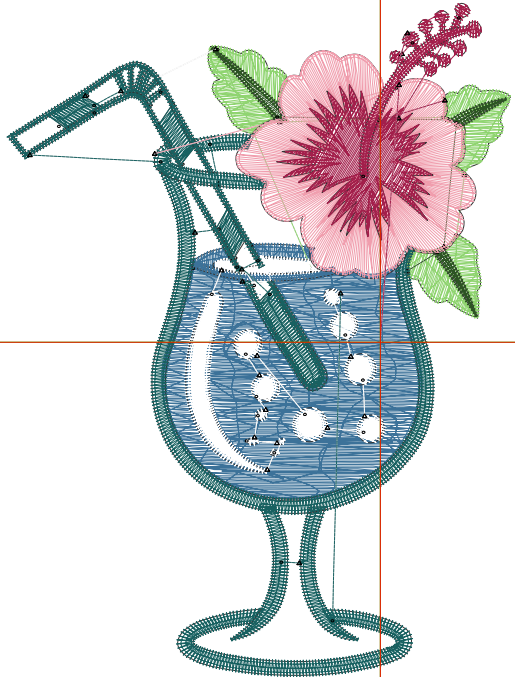
Title:

Stitches: 10,538
 Height: 3.51 in
 Width: 2.62 in
 Colors: 7
 Colorway: Colorway 1
 Zoom: 1:1

Machine format: Tajima
 Color changes: 6
 Stops: 7
 Trims: 40
 Appliqués: 0
 Left: 49.4 mm
 Right: 17.2 mm
 Up: 44.8 mm
 Down: 44.2 mm
 EndX: 0.00 in
 EndY: 0.00 in
 Area: 9.19 in²
 Max stitch: 8.7 mm
 Min stitch: 0.0 mm
 Max jump: 6.9 mm
 Total thread: 155.52ft
 Total bobbin: 49.83ft

Stop Sequence:

#	N#	Color	St.	Code	Name	Chart
1.	4		2,480		R60 G114 B153	
2.	5		878		R143 G212 B112	
3.	6		234		R44 G84 B35	
4.	9		1,251	9	White	Default
5.	1		2,683		R24 G97 B97	
6.	3		1,510		R240 G157 B173	
7.	2		1,500		R163 G31 B75	



Production Worksheet

Wilcom EmbroideryStudio - Designing



Design: **4**

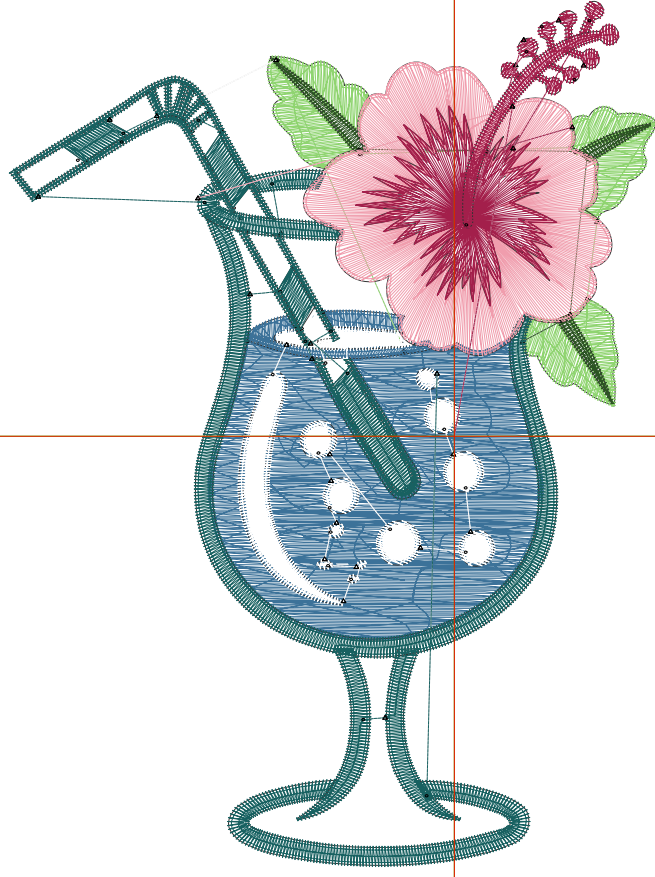
Title:

Stitches: 13,764
 Height: 4.51 in
 Width: 3.37 in
 Colors: 7
 Colorway: Colorway 1
 Zoom: 1:1

Machine format: Tajima
 Color changes: 6
 Stops: 7
 Trims: 44
 Appliqués: 0
 Left: 58.9 mm
 Right: 26.7 mm
 Up: 57.5 mm
 Down: 56.9 mm
 EndX: 0.00 in
 EndY: 0.00 in
 Area: 15.18 in²
 Max stitch: 11.2 mm
 Min stitch: 0.0 mm
 Max jump: 7.0 mm
 Total thread: 225.45ft
 Total bobbin: 78.72ft

Stop Sequence:

#	N#	Color	St.	Code	Name	Chart
1.	4		3,514		R60 G114 B153	
2.	5		1,175		R143 G212 B112	
3.	6		287		R44 G84 B35	
4.	9		1,556	9	White	Default
5.	1		3,472		R24 G97 B97	
6.	3		2,113		R240 G157 B173	
7.	2		1,645		R163 G31 B75	



Production Worksheet

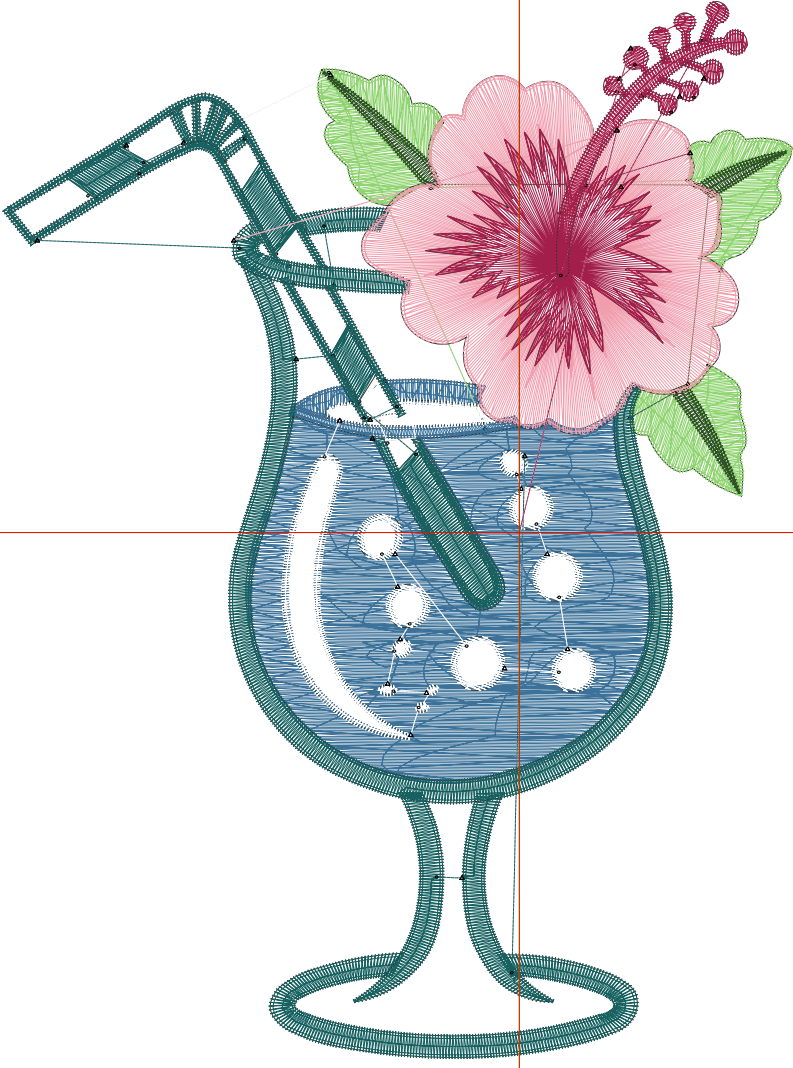
Wilcom EmbroideryStudio - Designing



Design: **5**

Title:

Stitches: 17,605
 Height: 5.51 in
 Width: 4.12 in
 Colors: 7
 Colorway: Colorway 1
 Zoom: 1:1



Machine format: Tajima
 Color changes: 6
 Stops: 7
 Trims: 46
 Appliqués: 0
 Left: 68.4 mm
 Right: 36.2 mm
 Up: 70.3 mm
 Down: 69.6 mm
 EndX: 0.00 in
 EndY: 0.00 in
 Area: 22.67 in²
 Max stitch: 6.9 mm
 Min stitch: 0.0 mm
 Max jump: 6.9 mm
 Total thread: 307.96ft
 Total bobbin: 112.68ft

Stop Sequence:

#	N#	Color	St.	Code	Name	Chart
1.	4		4,634		R60 G114 B153	
2.	5		1,529		R143 G212 B112	
3.	6		344		R44 G84 B35	
4.	9		1,874	9	White	Default
5.	1		4,289		R24 G97 B97	
6.	3		2,854		R240 G157 B173	
7.	2		2,079		R163 G31 B75	

Production Worksheet

Wilcom EmbroideryStudio - Designing



Design: **6**

Title:

Stitches: 21,876
 Height: 6.51 in
 Width: 4.86 in
 Colors: 7
 Colorway: Colorway 1
 Zoom: 1:1

Machine format: Tajima
 Color changes: 6
 Stops: 7
 Trims: 48
 Appliqués: 0
 Left: 77.9 mm
 Right: 45.7 mm
 Up: 83.0 mm
 Down: 82.3 mm
 EndX: 0.00 in
 EndY: 0.00 in
 Area: 31.65 in²
 Max stitch: 11.3 mm
 Min stitch: 0.0 mm
 Max jump: 7.0 mm
 Total thread: 406.29ft
 Total bobbin: 154.34ft

Stop Sequence:

#	N#	Color	St.	Code	Name	Chart
1.	4		5,985		R60 G114 B153	
2.	5		1,931		R143 G212 B112	
3.	6		407		R44 G84 B35	
4.	9		2,236	9	White	Default
5.	1		5,099		R24 G97 B97	
6.	3		3,700		R240 G157 B173	
7.	2		2,516		R163 G31 B75	



Production Worksheet

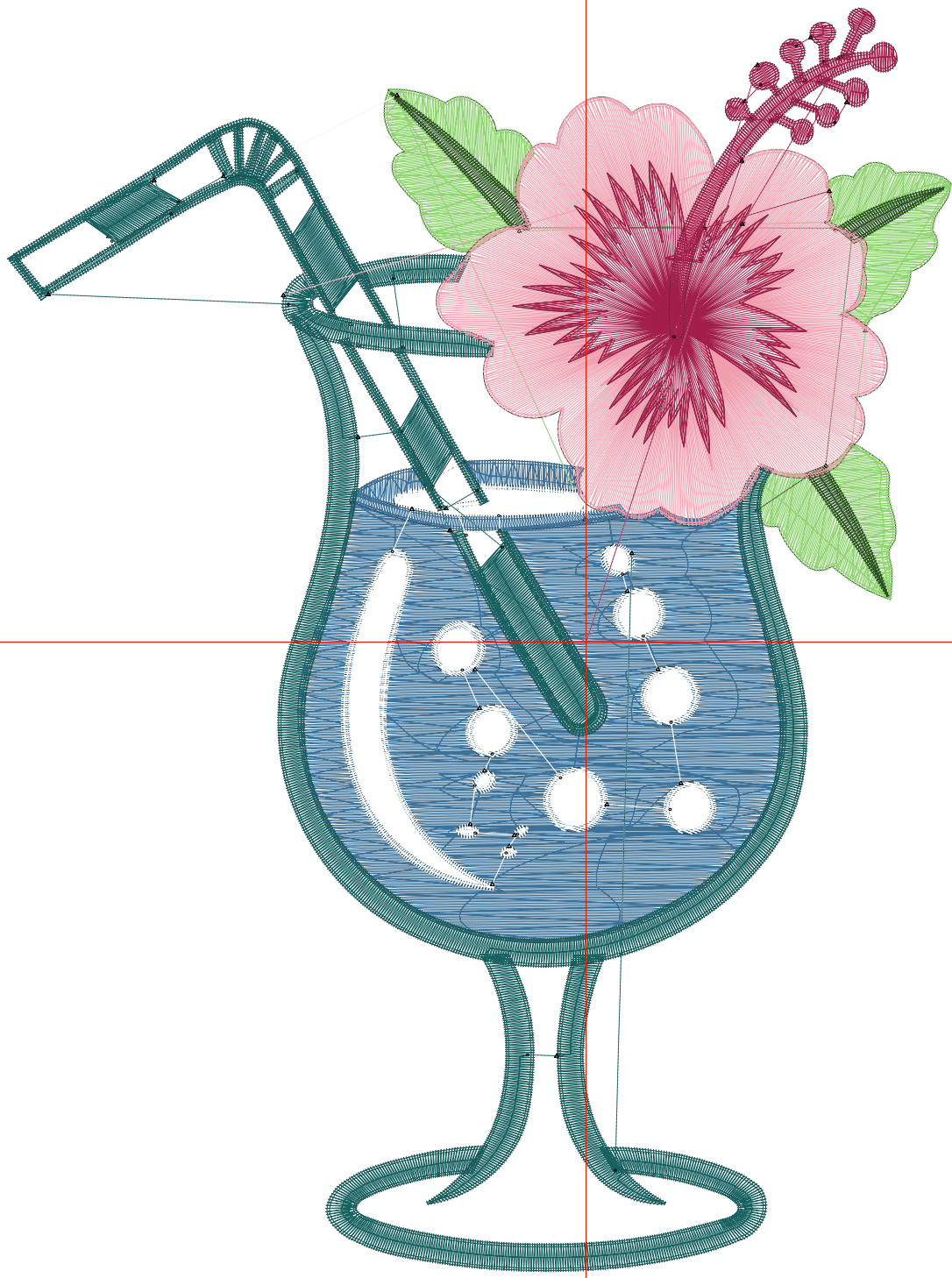
Wilcom EmbroideryStudio - Designing



Design: **7**

Title:

Stitches: 26,511
Height: 7.51 in
Width: 5.62 in
Colors: 7
Colorway: Colorway 1
Zoom: 1:1



Production Worksheet

Wilcom EmbroideryStudio - Designing



Design: **7**

Title:

Stitches: 26,511
 Height: 7.51 in
 Width: 5.62 in
 Colors: 7
 Colorway: Colorway 1
 Zoom: 1:1

Machine format: Tajima
 Color changes: 6
 Stops: 7
 Trims: 50
 Appliqués: 0
 Left: 87.4 mm
 Right: 55.3 mm
 Up: 95.7 mm
 Down: 95.0 mm
 EndX: 0.00 in
 EndY: 0.00 in
 Area 42.17 in²
 Max stitch: 9.3 mm
 Min stitch: 0.0 mm
 Max jump: 6.9 mm
 Total thread: 515.79ft
 Total bobbin: 201.21ft

Stop Sequence:

#	N#	Color	St.	Code	Name	Chart
1.	4		7,479		R60 G114 B153	
2.	5		2,366		R143 G212 B112	
3.	6		467		R44 G84 B35	
4.	9		2,571	9	White	Default
5.	1		5,930		R24 G97 B97	
6.	3		4,639		R240 G157 B173	
7.	2		3,057		R163 G31 B75	