

# Production Worksheet

Wilcom EmbroideryStudio - Designing



Design: **4**

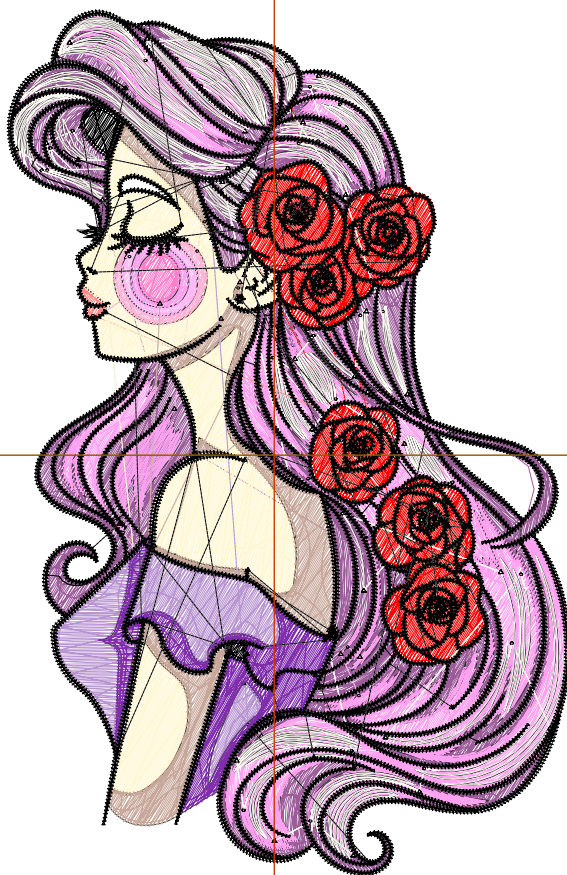
Title:

Stitches: 51,418  
 Height: 4.51 in  
 Width: 2.94 in  
 Colors: 13  
 Colorway: Colorway 1  
 Zoom: 1:1

Machine format: Tajima  
 Color changes: 13  
 Stops: 14  
 Trims: 246  
 Appliqués: 0  
 Left: 35.3 mm  
 Right: 39.3 mm  
 Up: 58.9 mm  
 Down: 55.7 mm  
 EndX: 0.00 in  
 EndY: 0.00 in  
 Area: 13.26 in<sup>2</sup>  
 Max stitch: 9.8 mm  
 Min stitch: 0.0 mm  
 Max jump: 6.9 mm  
 Total thread: 682.45ft  
 Total bobbin: 201.76ft

Stop Sequence:

#	N#	Color	St.	Code	Name	Chart
1.	13		9,631		R156 G92 B154	
2.	7		6,955		R255 G161 B241	
3.	23		1,705	3	Red	Default
4.	10		8,272		R255 G251 B246	
5.	9		68		R255 G136 B134	
6.	8		2,087		R255 G247 B209	
7.	5		287		R255 G180 B215	
8.	6		229		R255 G185 B247	
9.	7		217		R255 G161 B241	
10.	15		109	15	Pink	Default
11.	3		1,587		R199 G167 B154	
12.	4		944		R184 G147 B209	
13.	2		1,155		R128 G45 B173	
14.	28		18,170	8	Black	Default



# Production Worksheet

Wilcom EmbroideryStudio - Designing



Design: **5**

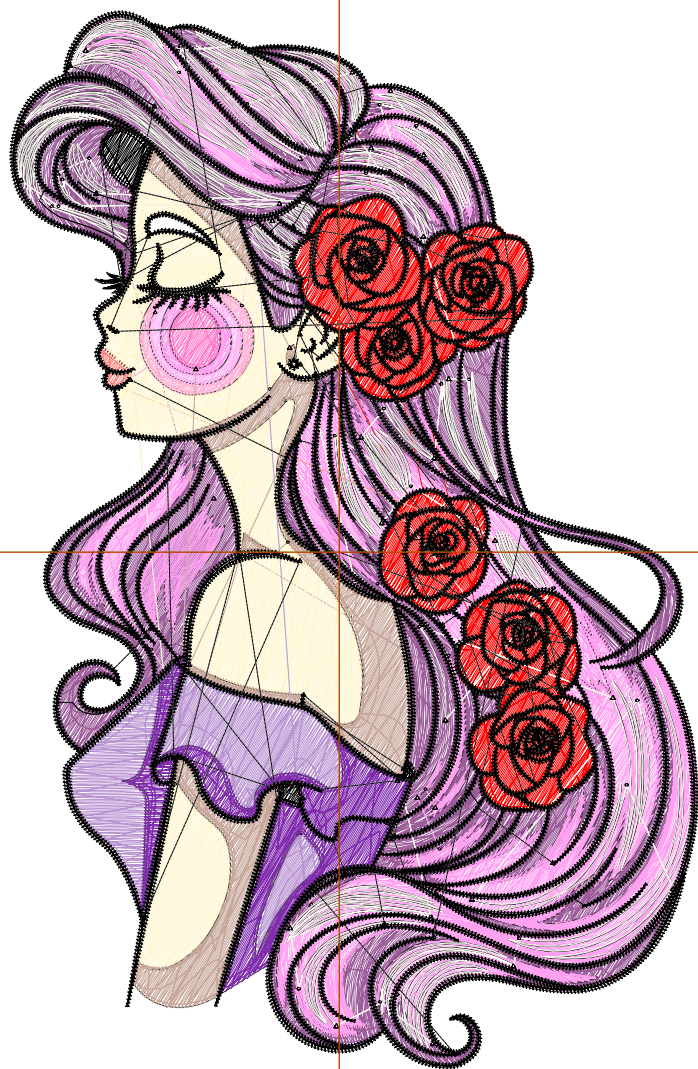
Title:

Stitches: 63,223  
 Height: 5.51 in  
 Width: 3.59 in  
 Colors: 13  
 Colorway: Colorway 1  
 Zoom: 1:1

Machine format: Tajima  
 Color changes: 13  
 Stops: 14  
 Trims: 261  
 Appliqués: 0  
 Left: 43.6 mm  
 Right: 47.5 mm  
 Up: 71.6 mm  
 Down: 68.4 mm  
 EndX: 0.00 in  
 EndY: 0.00 in  
 Area: 19.78 in<sup>2</sup>  
 Max stitch: 12.0 mm  
 Min stitch: 0.0 mm  
 Max jump: 6.9 mm  
 Total thread: 879.68ft  
 Total bobbin: 272.73ft

Stop Sequence:

#	N#	Color	St.	Code	Name	Chart
1.	13		12,158		R156 G92 B154	
2.	7		9,093		R255 G161 B241	
3.	23		2,351	3	Red	Default
4.	10		9,237		R255 G251 B246	
5.	9		88		R255 G136 B134	
6.	8		2,808		R255 G247 B209	
7.	5		358		R255 G180 B215	
8.	6		295		R255 G185 B247	
9.	7		290		R255 G161 B241	
10.	15		137	15	Pink	Default
11.	3		1,995		R199 G167 B154	
12.	4		1,260		R184 G147 B209	
13.	2		1,479		R128 G45 B173	
14.	28		21,672	8	Black	Default



# Production Worksheet

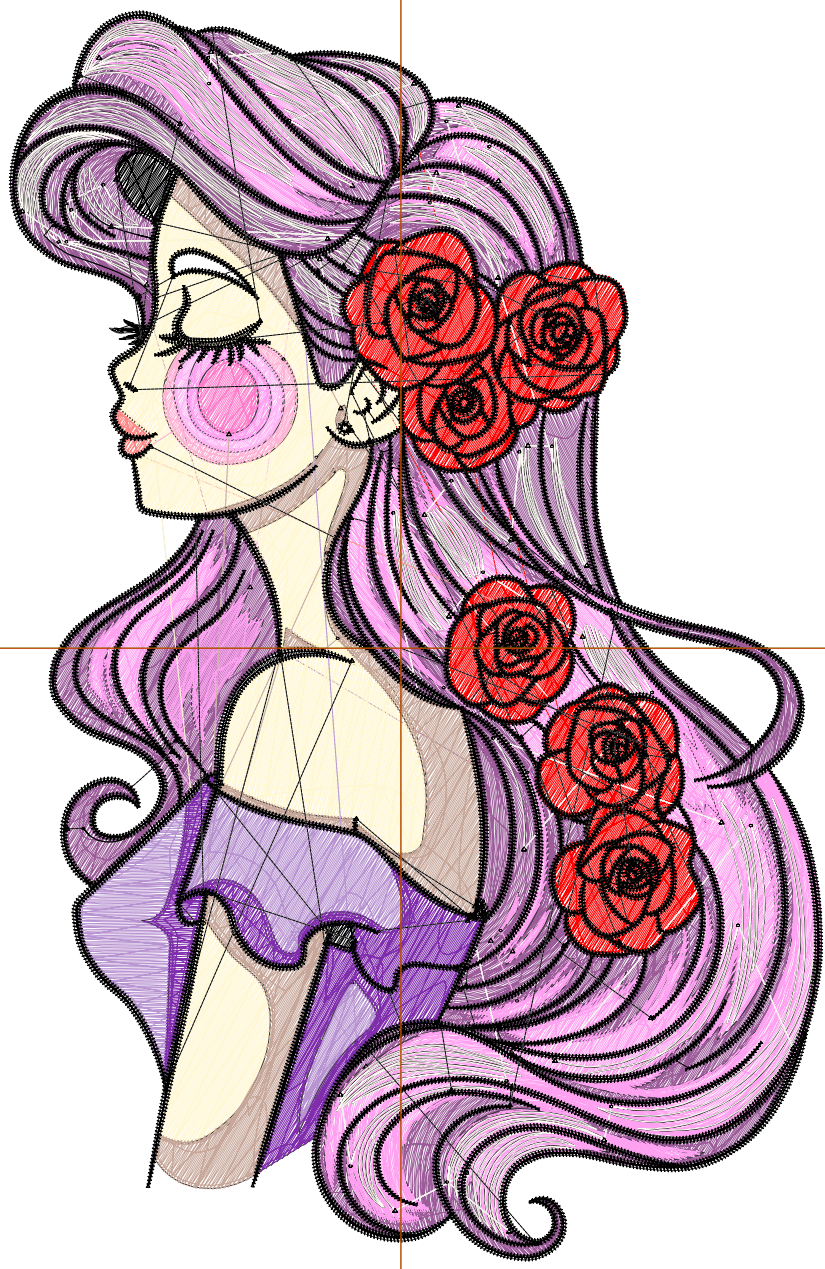
Wilcom EmbroideryStudio - Designing



Design: **6**

Title:

Stitches: 75,955  
 Height: 6.51 in  
 Width: 4.24 in  
 Colors: 13  
 Colorway: Colorway 1  
 Zoom: 1:1



Machine format: Tajima  
 Color changes: 13  
 Stops: 14  
 Trims: 272  
 Appliqués: 0  
 Left: 51.8 mm  
 Right: 55.8 mm  
 Up: 84.3 mm  
 Down: 81.1 mm  
 EndX: 0.00 in  
 EndY: 0.00 in  
 Area: 27.60 in<sup>2</sup>  
 Max stitch: 10.8 mm  
 Min stitch: 0.1 mm  
 Max jump: 7.0 mm  
 Total thread: 1098.78ft  
 Total bobbin: 353.06ft

Stop Sequence:

#	N#	Color	St.	Code	Name	Chart
1.	13		15,102		R156 G92 B154	
2.	7		11,419		R255 G161 B241	
3.	23		3,183	3	Red	Default
4.	10		10,197		R255 G251 B246	
5.	9		116		R255 G136 B134	
6.	8		3,610		R255 G247 B209	
7.	5		403		R255 G180 B215	
8.	6		344		R255 G185 B247	
9.	7		330		R255 G161 B241	
10.	15		173	15	Pink	Default
11.	3		2,484		R199 G167 B154	
12.	4		1,611		R184 G147 B209	
13.	2		1,816		R128 G45 B173	
14.	28		25,165	8	Black	Default

# Production Worksheet

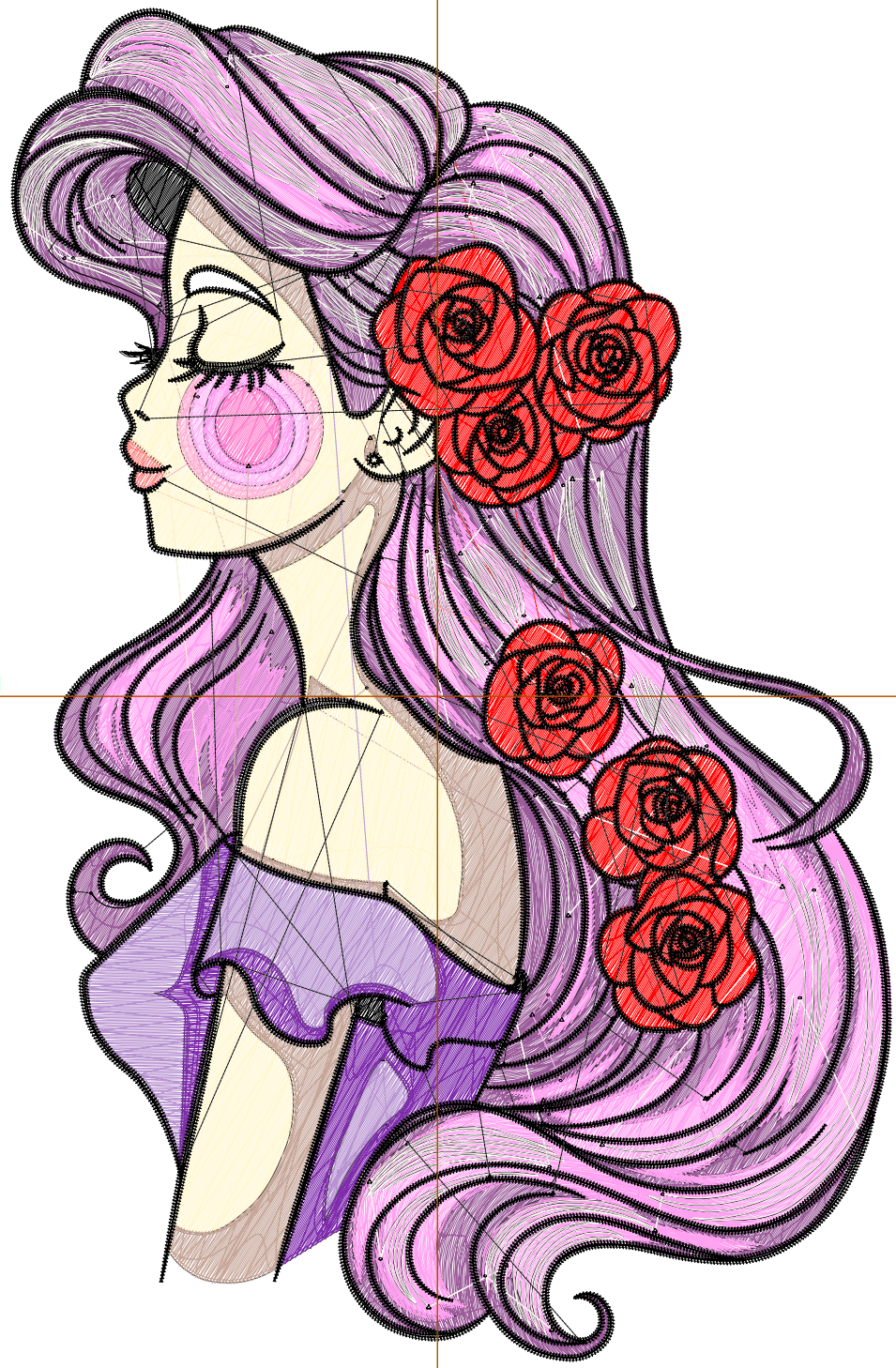
Wilcom EmbroideryStudio - Designing



Design: **7**

Title:

Stitches: 88,052  
 Height: 7.51 in  
 Width: 4.89 in  
 Colors: 13  
 Colorway: Colorway 1  
 Zoom: 1:1



Machine format: Tajima  
 Color changes: 13  
 Stops: 14  
 Trims: 282  
 Appliqués: 0  
 Left: 60.1 mm  
 Right: 64.1 mm  
 Up: 97.0 mm  
 Down: 93.8 mm  
 EndX: 0.00 in  
 EndY: 0.00 in  
 Area: 36.72 in<sup>2</sup>  
 Max stitch: 8.6 mm  
 Min stitch: 0.0 mm  
 Max jump: 7.0 mm  
 Total thread: 1320.98ft  
 Total bobbin: 437.70ft

Stop Sequence:

#	N#	Color	St.	Code	Name	Chart
1.	13		18,422		R156 G92 B154	
2.	7		12,583		R255 G161 B241	
3.	23		3,989	3	Red	Default
4.	10		11,161		R255 G251 B246	
5.	9		115		R255 G136 B134	
6.	8		4,498		R255 G247 B209	
7.	5		472		R255 G180 B215	
8.	6		398		R255 G185 B247	
9.	7		373		R255 G161 B241	
10.	15		208	15	Pink	Default
11.	3		2,970		R199 G167 B154	
12.	4		2,005		R184 G147 B209	
13.	2		2,172		R128 G45 B173	
14.	28		28,684	8	Black	Default

# Production Worksheet

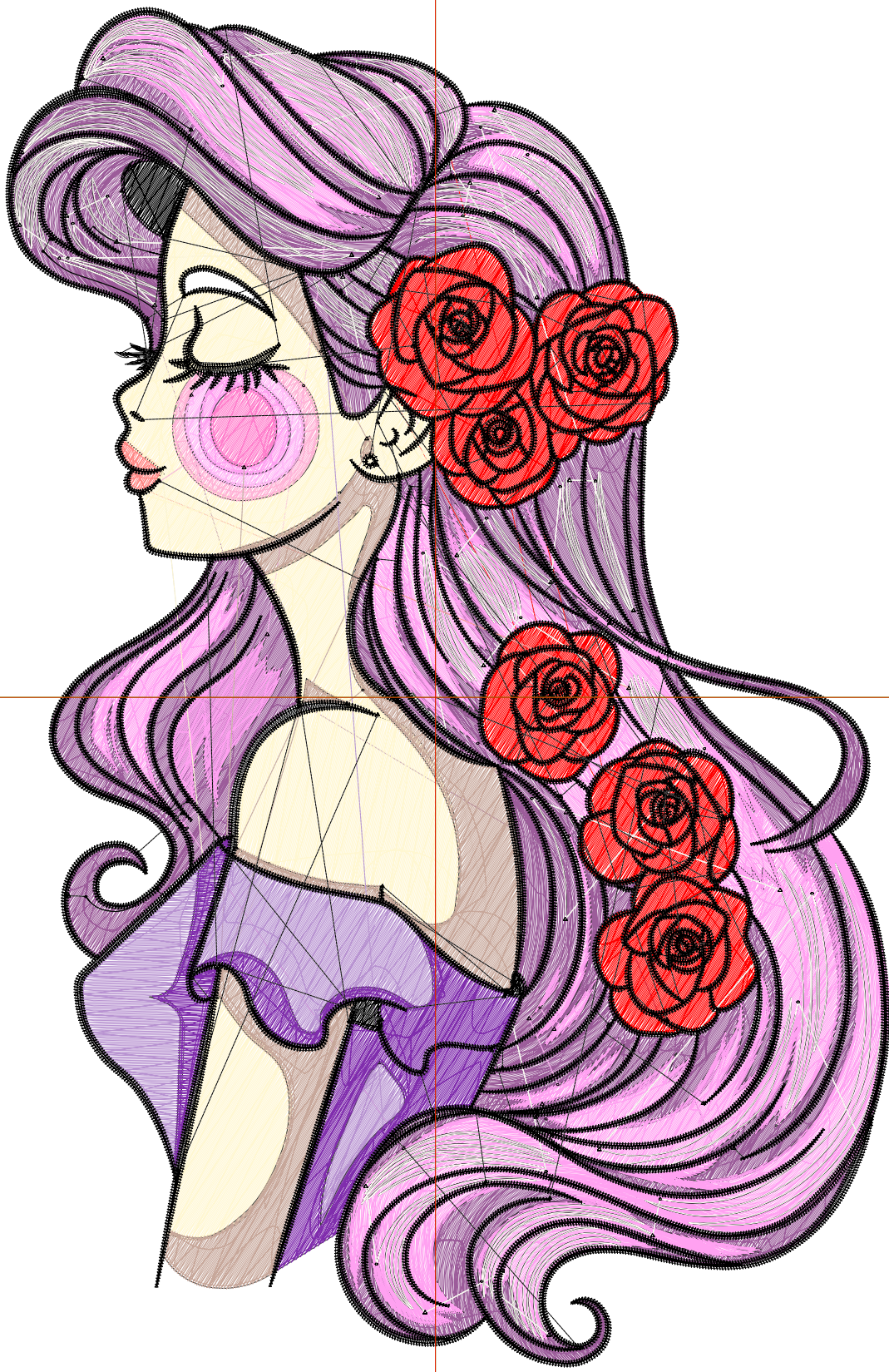
Wilcom EmbroideryStudio - Designing



Design: **8**

Title:

Stitches: 103,730  
Height: 8.51 in  
Width: 5.54 in  
Colors: 13  
Colorway: Colorway 1  
Zoom: 1:1



# Production Worksheet

Wilcom EmbroideryStudio - Designing



Design: **8**

Title:

Stitches: 103,730  
 Height: 8.51 in  
 Width: 5.54 in  
 Colors: 13  
 Colorway: Colorway 1  
 Zoom: 1:1

Machine format: Tajima  
 Color changes: 13  
 Stops: 14  
 Trims: 290  
 Appliqués: 0  
 Left: 68.3 mm  
 Right: 72.3 mm  
 Up: 109.7 mm  
 Down: 106.5 mm  
 EndX: 0.00 in  
 EndY: 0.00 in  
 Area 47.14 in<sup>2</sup>  
 Max stitch: 9.7 mm  
 Min stitch: 0.0 mm  
 Max jump: 7.0 mm  
 Total thread: 1600.43ft  
 Total bobbin: 542.34ft

Stop Sequence:

#	N#	Color	St.	Code	Name	Chart
1.	13		22,272		R156 G92 B154	
2.	7		16,400		R255 G161 B241	
3.	23		4,899	3	Red	Default
4.	10		12,149		R255 G251 B246	
5.	9		150		R255 G136 B134	
6.	8		5,453		R255 G247 B209	
7.	5		530		R255 G180 B215	
8.	6		455		R255 G185 B247	
9.	7		432		R255 G161 B241	
10.	15		250	15	Pink	Default
11.	3		3,506		R199 G167 B154	
12.	4		2,436		R184 G147 B209	
13.	2		2,562		R128 G45 B173	
14.	28		32,234	8	Black	Default