

# Production Worksheet

Wilcom EmbroideryStudio - Designing



Design: **3**

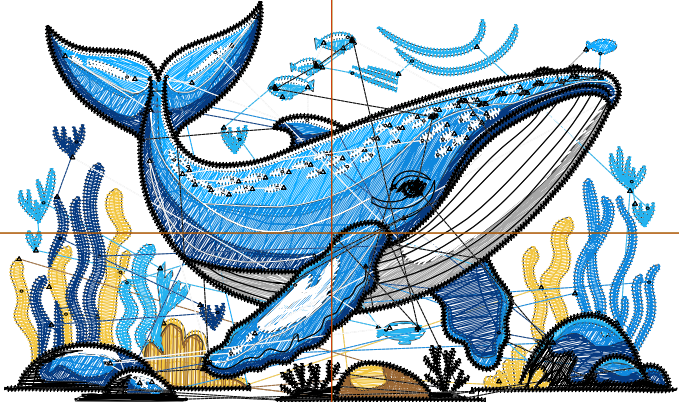
Title:

Stitches: 21,262  
 Height: 2.09 in  
 Width: 3.50 in  
 Colors: 9  
 Colorway: Colorway 1  
 Zoom: 1:1

Machine format: Tajima  
 Color changes: 8  
 Stops: 9  
 Trims: 139  
 Appliqués: 0  
 Left: 43.3 mm  
 Right: 45.7 mm  
 Up: 30.6 mm  
 Down: 22.4 mm  
 EndX: 0.00 in  
 EndY: 0.00 in  
 Area 7.31 in<sup>2</sup>  
 Max stitch: 8.3 mm  
 Min stitch: 0.0 mm  
 Max jump: 7.0 mm  
 Total thread: 272.82ft  
 Total bobbin: 77.25ft

Stop Sequence:

#	N#	Color	St.	Code	Name	Chart
1.	6		1,243		R242 G198 B64	
2.	14		527	14	Brown	Default
3.	7		1,267		R13 G170 B255	
4.	3		511		R166 G166 B166	
5.	5		2,306		R36 G179 B240	
6.	4		3,458		R15 G136 B222	
7.	2		3,018		R6 G58 B128	
8.	9		3,504	9	White	Default
9.	8		5,426	8	Black	Default



# Production Worksheet

Wilcom EmbroideryStudio - Designing



Design: **4**

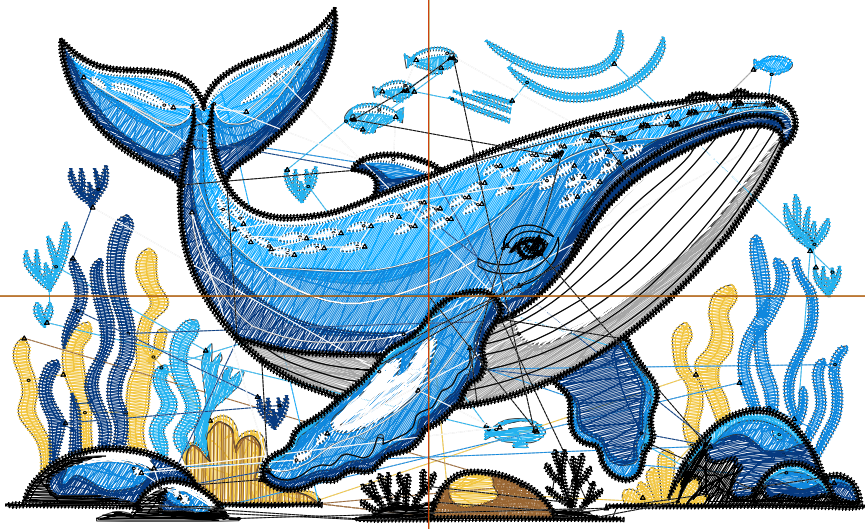
Title:

Stitches: 27,762  
 Height: 2.68 in  
 Width: 4.50 in  
 Colors: 9  
 Colorway: Colorway 1  
 Zoom: 1:1

Machine format: Tajima  
 Color changes: 8  
 Stops: 9  
 Trims: 151  
 Appliqués: 0  
 Left: 56.0 mm  
 Right: 58.3 mm  
 Up: 38.2 mm  
 Down: 30.0 mm  
 EndX: 0.00 in  
 EndY: 0.00 in  
 Area: 12.08 in<sup>2</sup>  
 Max stitch: 10.9 mm  
 Min stitch: 0.0 mm  
 Max jump: 7.0 mm  
 Total thread: 378.67ft  
 Total bobbin: 114.70ft

Stop Sequence:

#	N#	Color	St.	Code	Name	Chart
1.	6		1,594		R242 G198 B64	
2.	14		690	14	Brown	Default
3.	7		1,781		R13 G170 B255	
4.	3		741		R166 G166 B166	
5.	5		2,933		R36 G179 B240	
6.	4		4,610		R15 G136 B222	
7.	2		3,962		R6 G58 B128	
8.	9		4,550	9	White	Default
9.	8		6,899	8	Black	Default



# Production Worksheet

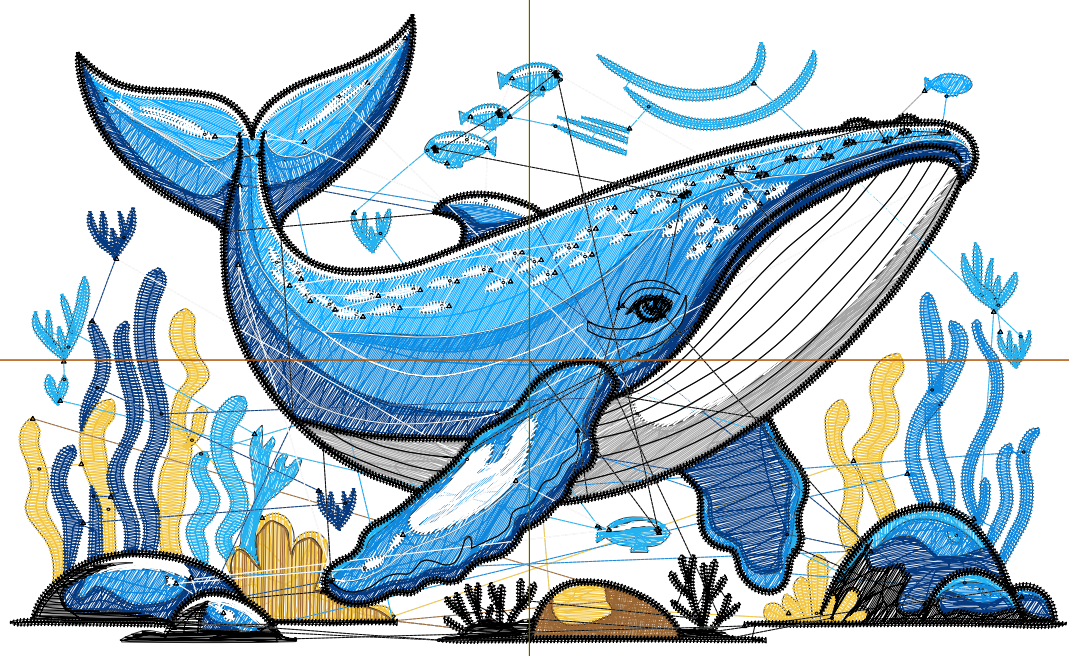
Wilcom EmbroideryStudio - Designing



Design: **5**

Title:

Stitches: 34,508  
Height: 3.28 in  
Width: 5.50 in  
Colors: 9  
Colorway: Colorway 1  
Zoom: 1:1



# Production Worksheet

Wilcom EmbroideryStudio - Designing



Design: **5**

Title:

Stitches: 34,508  
 Height: 3.28 in  
 Width: 5.50 in  
 Colors: 9  
 Colorway: Colorway 1  
 Zoom: 1:1

Machine format: Tajima  
 Color changes: 8  
 Stops: 9  
 Trims: 155  
 Appliqués: 0  
 Left: 68.7 mm  
 Right: 71.0 mm  
 Up: 45.7 mm  
 Down: 37.5 mm  
 EndX: 0.00 in  
 EndY: 0.00 in  
 Area 18.03 in<sup>2</sup>  
 Max stitch: 9.0 mm  
 Min stitch: 0.0 mm  
 Max jump: 7.0 mm  
 Total thread: 498.18ft  
 Total bobbin: 159.29ft

Stop Sequence:

#	N#	Color	St.	Code	Name	Chart
1.	6		1,954		R242 G198 B64	
2.	14		853	14	Brown	Default
3.	7		2,417		R13 G170 B255	
4.	3		995		R166 G166 B166	
5.	5		3,632		R36 G179 B240	
6.	4		5,830		R15 G136 B222	
7.	2		4,998		R6 G58 B128	
8.	9		5,638	9	White	Default
9.	8		8,189	8	Black	Default

# Production Worksheet

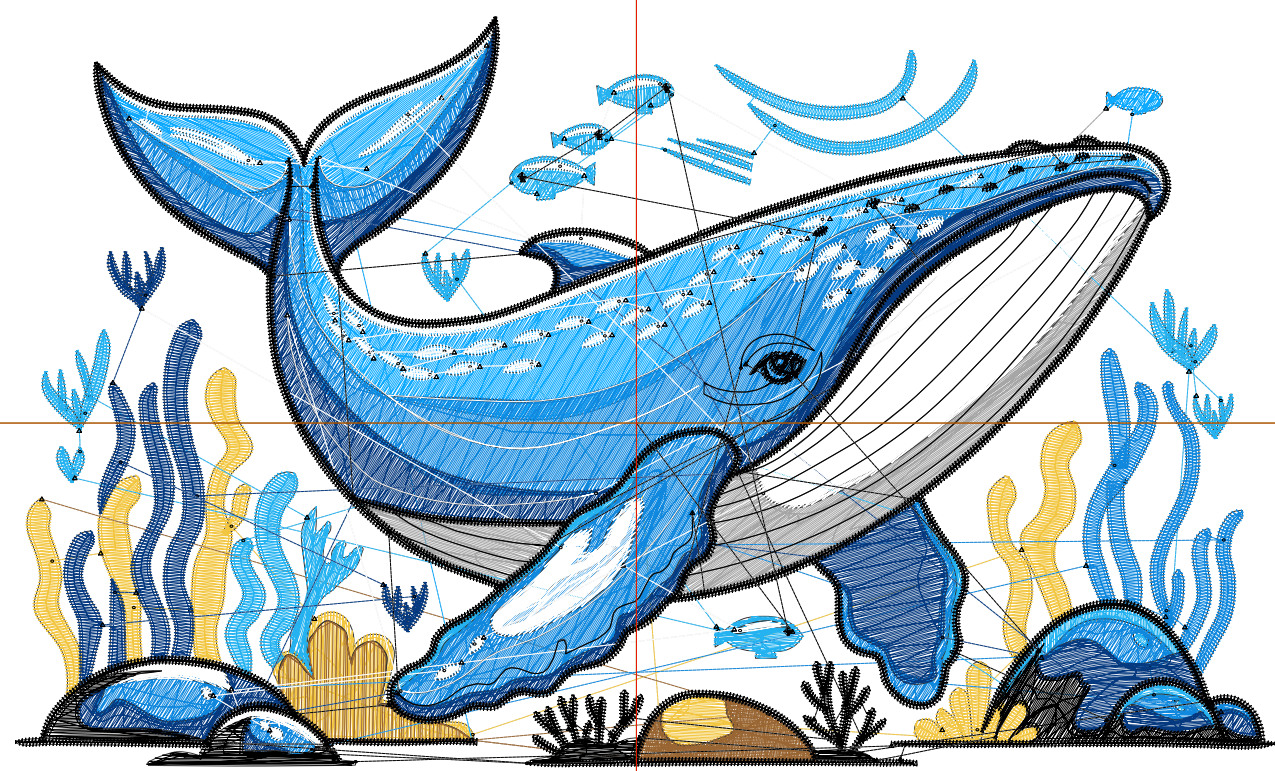
Wilcom EmbroideryStudio - Designing



Design: **6**

Title:

Stitches: 42,392  
Height: 3.91 in  
Width: 6.56 in  
Colors: 9  
Colorway: Colorway 1  
Zoom: 1:1



# Production Worksheet

Wilcom EmbroideryStudio - Designing



Design: **6**

Title:

Stitches: 42,392  
 Height: 3.91 in  
 Width: 6.56 in  
 Colors: 9  
 Colorway: Colorway 1  
 Zoom: 1:1

Machine format: Tajima  
 Color changes: 8  
 Stops: 9  
 Trims: 164  
 Appliqués: 0  
 Left: 82.1 mm  
 Right: 84.5 mm  
 Up: 53.7 mm  
 Down: 45.5 mm  
 EndX: 0.00 in  
 EndY: 0.00 in  
 Area 25.64 in<sup>2</sup>  
 Max stitch: 11.3 mm  
 Min stitch: 0.0 mm  
 Max jump: 7.0 mm  
 Total thread: 643.10ft  
 Total bobbin: 214.51ft

Stop Sequence:

#	N#	Color	St.	Code	Name	Chart
1.	6		2,366		R242 G198 B64	
2.	14		1,071	14	Brown	Default
3.	7		3,169		R13 G170 B255	
4.	3		1,299		R166 G166 B166	
5.	5		4,322		R36 G179 B240	
6.	4		7,326		R15 G136 B222	
7.	2		6,193		R6 G58 B128	
8.	9		6,814	9	White	Default
9.	8		9,830	8	Black	Default