

# Production Worksheet

Wilcom EmbroideryStudio - Designing



Design: **4**

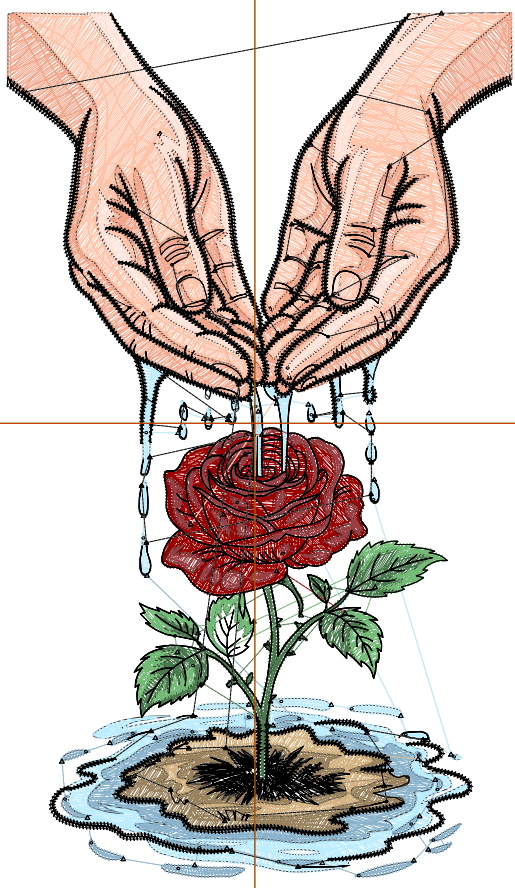
Title:

Stitches: 34,550  
 Height: 4.51 in  
 Width: 2.64 in  
 Colors: 12  
 Colorway: Colorway 1  
 Zoom: 1:1

Machine format: Tajima  
 Color changes: 11  
 Stops: 12  
 Trims: 124  
 Appliqués: 0  
 Left: 32.8 mm  
 Right: 34.1 mm  
 Up: 54.4 mm  
 Down: 60.1 mm  
 EndX: 0.00 in  
 EndY: 0.00 in  
 Area: 11.89 in<sup>2</sup>  
 Max stitch: 10.7 mm  
 Min stitch: 0.0 mm  
 Max jump: 6.9 mm  
 Total thread: 418.24ft  
 Total bobbin: 111.17ft

Stop Sequence:

#	N#	Color	St.	Code	Name	Chart
1.	3		2,918		R188 G236 B255	
2.	2		1,731		R139 G180 B204	
3.	5		964		R212 G180 B130	
4.	4		1,817		R153 G130 B94	
5.	1		1,633		R73 G120 B76	
6.	6		1,274		R114 G186 B118	
7.	11		2,926	11	Dark Red	Default
8.	7		1,749		R153 G62 B66	
9.	12		4,625		R255 G195 B169	
10.	10		4,279		R242 G166 B139	
11.	9		2,236		R255 G225 B214	
12.	8		8,396	8	Black	Default



# Production Worksheet

Wilcom EmbroideryStudio - Designing



Design: **5**

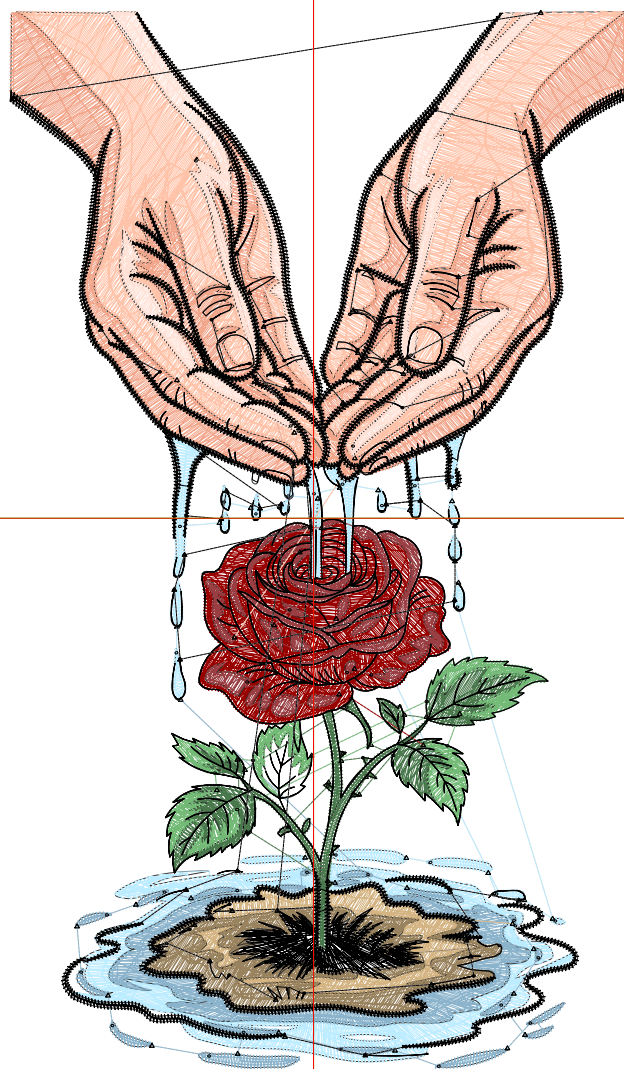
Title:

Stitches: 42,386  
 Height: 5.51 in  
 Width: 3.22 in  
 Colors: 12  
 Colorway: Colorway 1  
 Zoom: 1:1

Machine format: Tajima  
 Color changes: 11  
 Stops: 12  
 Trims: 134  
 Appliqués: 0  
 Left: 40.2 mm  
 Right: 41.5 mm  
 Up: 67.1 mm  
 Down: 72.8 mm  
 EndX: 0.00 in  
 EndY: 0.00 in  
 Area: 17.74 in<sup>2</sup>  
 Max stitch: 11.5 mm  
 Min stitch: 0.0 mm  
 Max jump: 7.0 mm  
 Total thread: 538.31ft  
 Total bobbin: 151.85ft

Stop Sequence:

#	N#	Color	St.	Code	Name	Chart
1.	3		3,455		R188 G236 B255	
2.	2		2,107		R139 G180 B204	
3.	5		1,190		R212 G180 B130	
4.	4		2,256		R153 G130 B94	
5.	1		2,020		R73 G120 B76	
6.	6		1,604		R114 G186 B118	
7.	11		3,624	11	Dark Red	Default
8.	7		2,196		R153 G62 B66	
9.	12		5,821		R255 G195 B169	
10.	10		5,392		R242 G166 B139	
11.	9		2,807		R255 G225 B214	
12.	8		9,912	8	Black	Default



# Production Worksheet

Wilcom EmbroideryStudio - Designing



Design: **6**

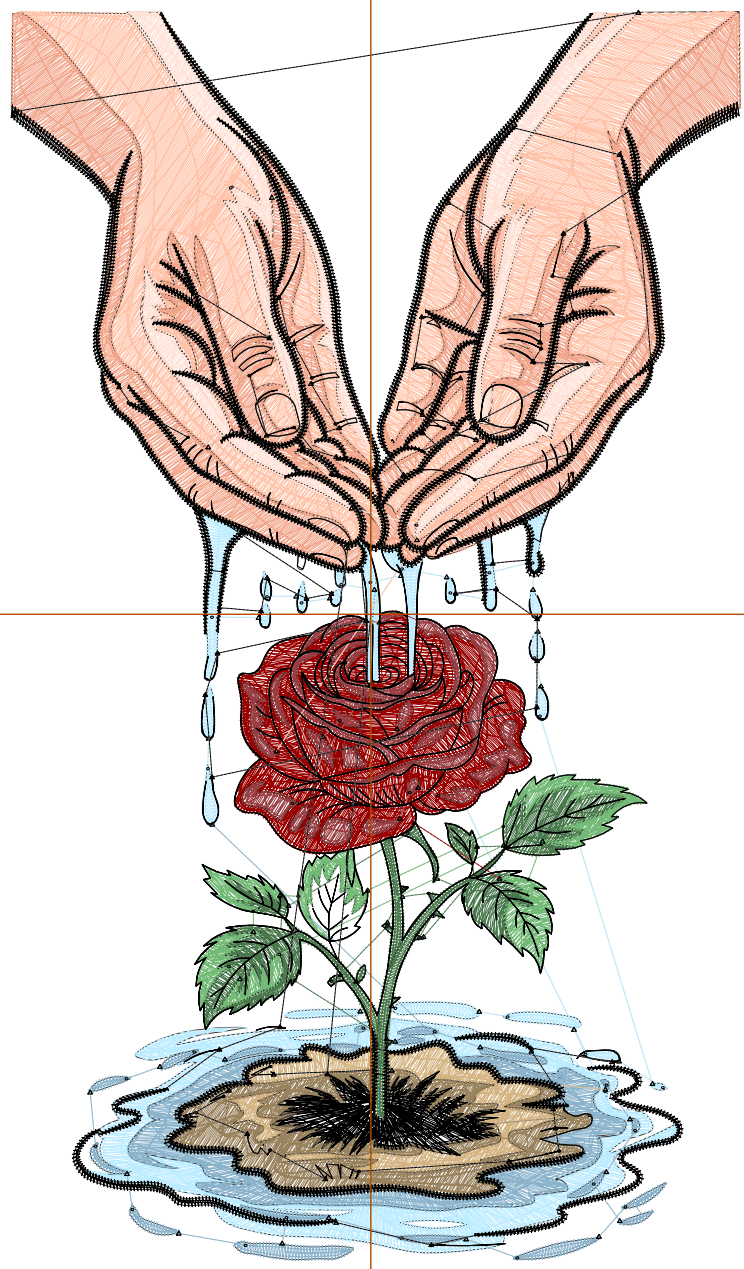
Title:

Stitches: 50,374  
 Height: 6.51 in  
 Width: 3.80 in  
 Colors: 12  
 Colorway: Colorway 1  
 Zoom: 1:1

Machine format: Tajima  
 Color changes: 11  
 Stops: 12  
 Trims: 142  
 Appliqués: 0  
 Left: 47.6 mm  
 Right: 49.0 mm  
 Up: 79.8 mm  
 Down: 85.5 mm  
 EndX: 0.00 in  
 EndY: 0.00 in  
 Area: 24.75 in<sup>2</sup>  
 Max stitch: 11.3 mm  
 Min stitch: 0.0 mm  
 Max jump: 7.0 mm  
 Total thread: 668.43ft  
 Total bobbin: 197.90ft

Stop Sequence:

#	N#	Color	St.	Code	Name	Chart
1.	3		4,109		R188 G236 B255	
2.	2		2,452		R139 G180 B204	
3.	5		1,419		R212 G180 B130	
4.	4		2,686		R153 G130 B94	
5.	1		2,428		R73 G120 B76	
6.	6		1,912		R114 G186 B118	
7.	11		4,297	11	Dark Red	Default
8.	7		2,617		R153 G62 B66	
9.	12		7,142		R255 G195 B169	
10.	10		6,588		R242 G166 B139	
11.	9		3,331		R255 G225 B214	
12.	8		11,391	8	Black	Default



# Production Worksheet

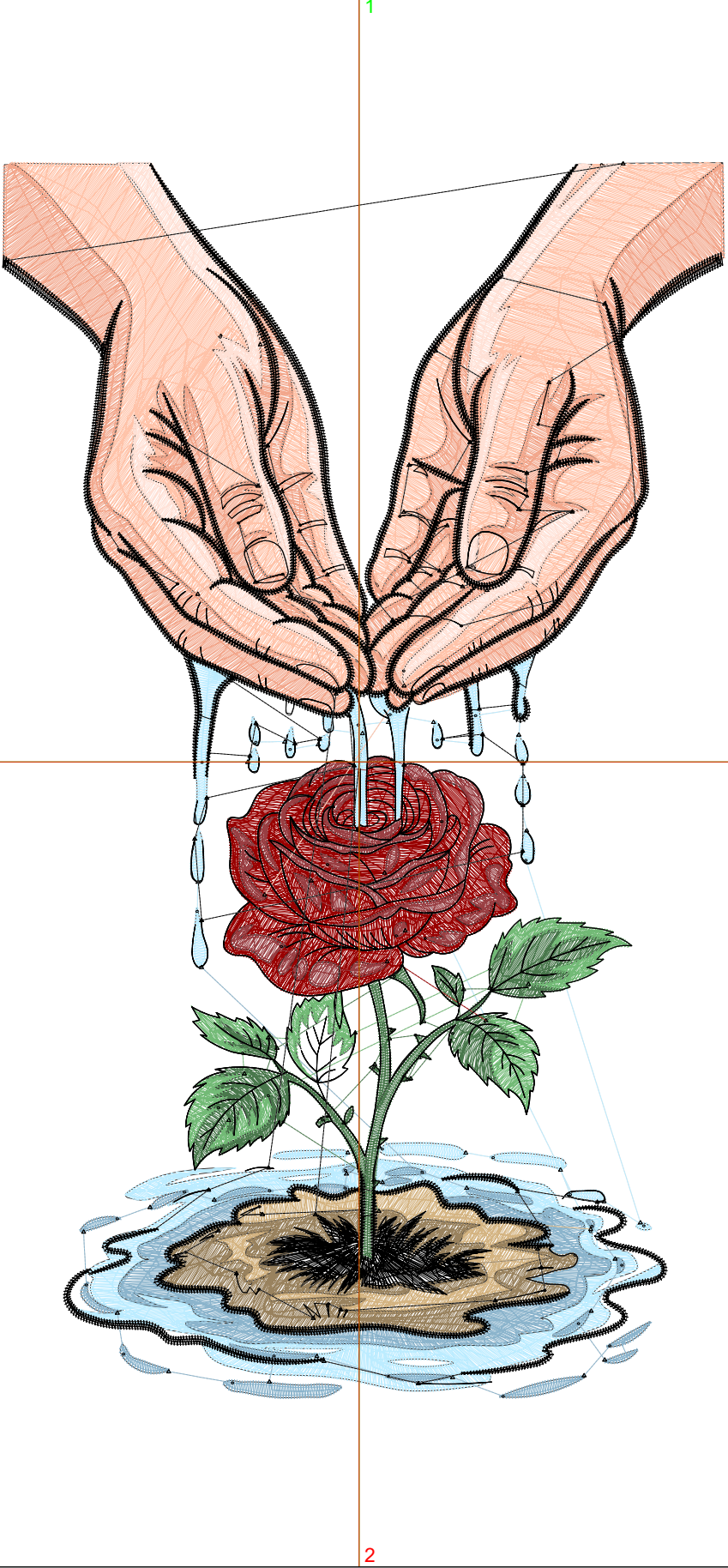
Wilcom EmbroideryStudio - Designing



Design: **7**

Title:

Stitches: 58,719  
 Height: 7.51 in  
 Width: 4.39 in  
 Colors: 12  
 Colorway: Colorway 1  
 Zoom: 1:1



Machine format: Tajima  
 Color changes: 11  
 Stops: 12  
 Trims: 147  
 Appliqués: 0  
 Left: 55.0 mm  
 Right: 56.4 mm  
 Up: 92.5 mm  
 Down: 98.2 mm  
 EndX: 0.00 in  
 EndY: 0.00 in  
 Area: 32.93 in<sup>2</sup>  
 Max stitch: 11.5 mm  
 Min stitch: 0.0 mm  
 Max jump: 7.0 mm  
 Total thread: 810.77ft  
 Total bobbin: 249.80ft

Stop Sequence:

#	N#	Color	St.	Code	Name	Chart
1.	3		4,771		R188 G236 B255	
2.	2		2,864		R139 G180 B204	
3.	5		1,677		R212 G180 B130	
4.	4		3,152		R153 G130 B94	
5.	1		2,831		R73 G120 B76	
6.	6		2,207		R114 G186 B118	
7.	11		4,957	11	Dark Red	Default
8.	7		3,032		R153 G62 B66	
9.	12		8,602		R255 G195 B169	
10.	10		7,881		R242 G166 B139	
11.	9		3,879		R255 G225 B214	
12.	8		12,864	8	Black	Default

# Production Worksheet

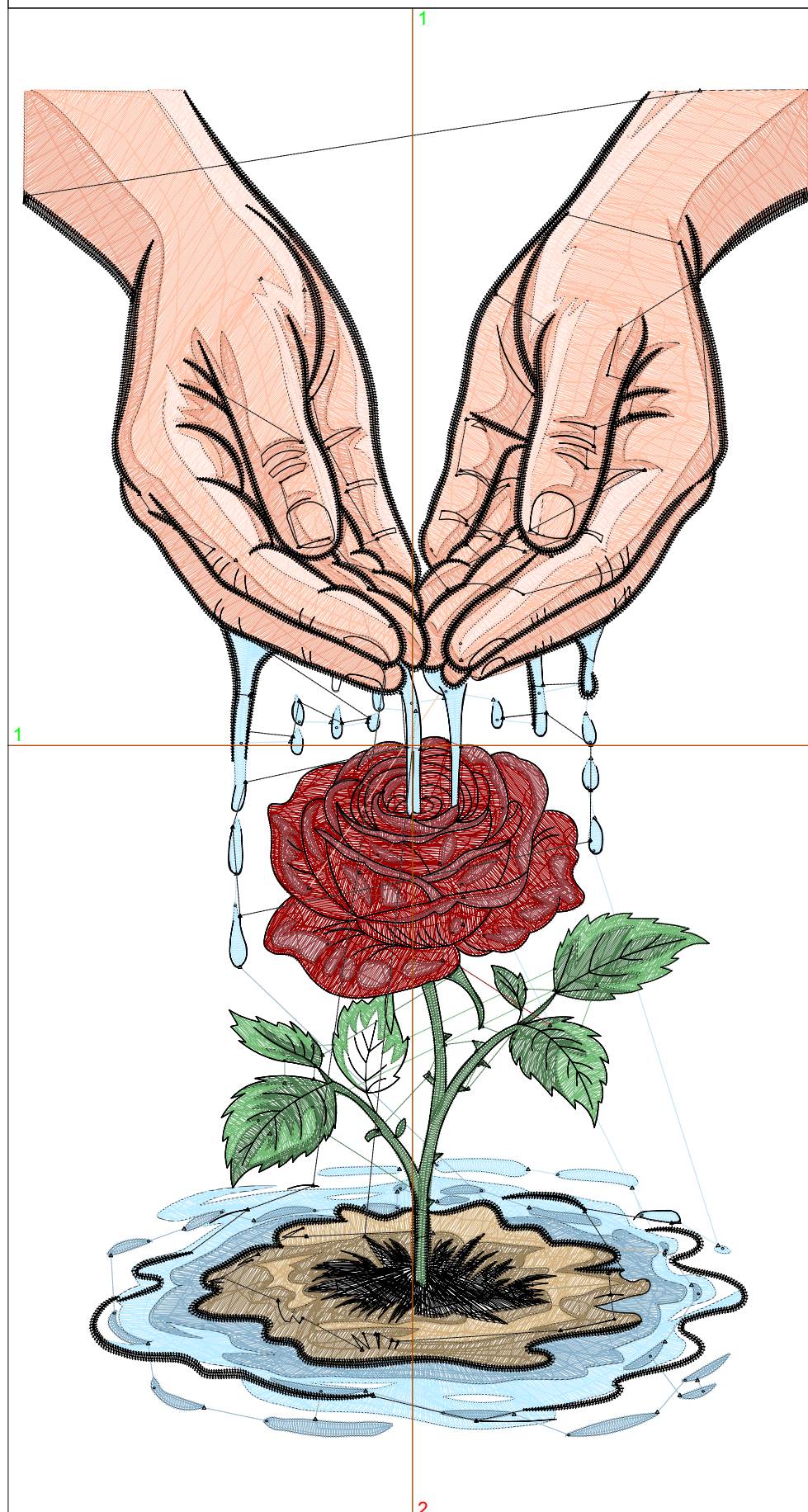
Wilcom EmbroideryStudio - Designing



Design: **8**

Title:

Stitches: 67,665  
 Height: 8.51 in  
 Width: 4.97 in  
 Colors: 12  
 Colorway: Colorway 1  
 Zoom: 1:1



Machine format: Tajima  
 Color changes: 11  
 Stops: 12  
 Trims: 158  
 Appliqués: 0  
 Left: 62.4 mm  
 Right: 63.8 mm  
 Up: 105.2 mm  
 Down: 110.9 mm  
 EndX: 0.00 in  
 EndY: 0.00 in  
 Area: 42.28 in<sup>2</sup>  
 Max stitch: 8.9 mm  
 Min stitch: 0.0 mm  
 Max jump: 6.9 mm  
 Total thread: 966.45ft  
 Total bobbin: 307.27ft

Stop Sequence:

#	N#	Color	St.	Code	Name	Chart
1.	3		5,496		R188 G236 B255	
2.	2		3,294		R139 G180 B204	
3.	5		1,934		R212 G180 B130	
4.	4		3,646		R153 G130 B94	
5.	1		3,270		R73 G120 B76	
6.	6		2,557		R114 G186 B118	
7.	11		5,717	11	Dark Red	Default
8.	7		3,499		R153 G62 B66	
9.	12		10,166		R255 G195 B169	
10.	10		9,214		R242 G166 B139	
11.	9		4,441		R255 G225 B214	
12.	8		14,429	8	Black	Default