

Production Worksheet

Wilcom EmbroideryStudio - Designing



Design: **3**

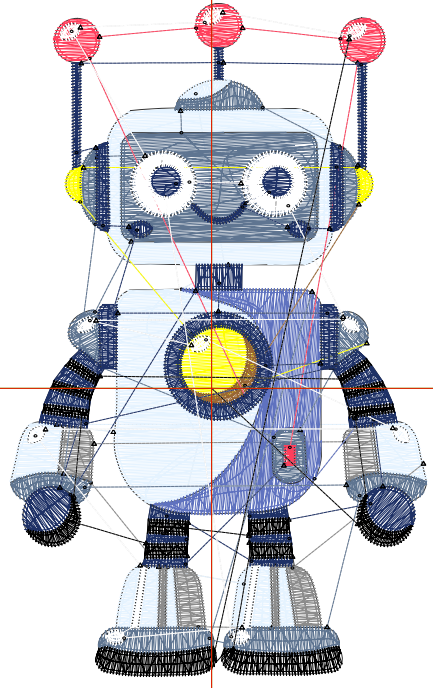
Title:

Stitches: 14,121
 Height: 3.50 in
 Width: 2.18 in
 Colors: 10
 Colorway: Colorway 1
 Zoom: 1:1

Machine format: Tajima
 Color changes: 9
 Stops: 10
 Trims: 73
 Appliqués: 0
 Left: 26.7 mm
 Right: 28.6 mm
 Up: 50.8 mm
 Down: 38.2 mm
 EndX: 0.00 in
 EndY: 0.00 in
 Area 7.62 in²
 Max stitch: 7.0 mm
 Min stitch: 0.0 mm
 Max jump: 7.0 mm
 Total thread: 191.46ft
 Total bobbin: 56.61ft

Stop Sequence:

#	N#	Color	St.	Code	Name	Chart
1.	10		2,679		R229 G243 B255	
2.	1		684		R140 G140 B140	
3.	6		818		R95 G114 B191	
4.	5		2,609		R95 G117 B145	
5.	4		391	4	Yellow	Default
6.	14		213	14	Brown	Default
7.	7		395		R255 G63 B92	
8.	2		3,401		R30 G49 B102	
9.	9		1,373	9	White	Default
10.	8		1,556	8	Black	Default



Production Worksheet

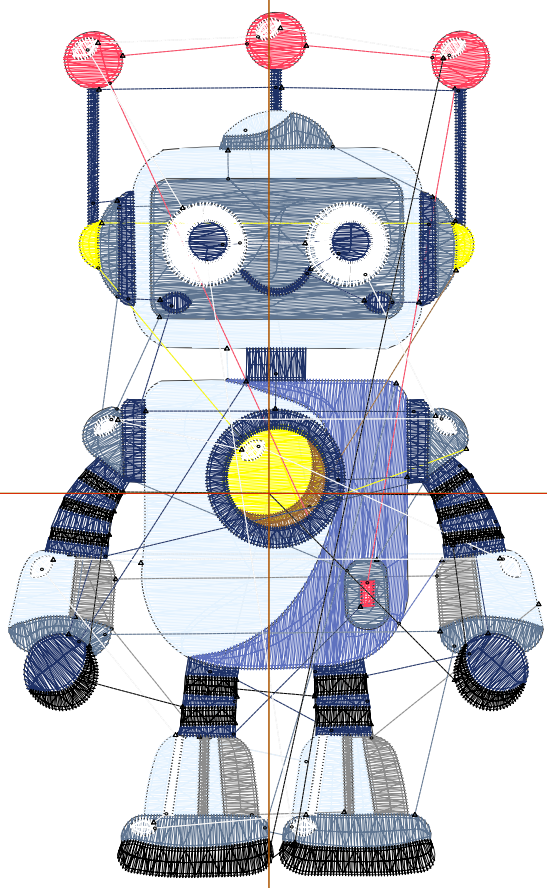
Wilcom EmbroideryStudio - Designing



Design: **4**

Title:

Stitches: 18,702
 Height: 4.50 in
 Width: 2.79 in
 Colors: 10
 Colorway: Colorway 1
 Zoom: 1:1



Machine format: Tajima
 Color changes: 9
 Stops: 10
 Trims: 81
 Appliqués: 0
 Left: 34.6 mm
 Right: 36.3 mm
 Up: 63.6 mm
 Down: 50.8 mm
 EndX: 0.00 in
 EndY: 0.00 in
 Area: 12.57 in²
 Max stitch: 8.3 mm
 Min stitch: 0.0 mm
 Max jump: 7.0 mm
 Total thread: 271.88ft
 Total bobbin: 86.45ft

Stop Sequence:

#	N#	Color	St.	Code	Name	Chart
1.	10		3,689		R229 G243 B255	
2.	1		900		R140 G140 B140	
3.	6		1,179		R95 G114 B191	
4.	5		3,419		R95 G117 B145	
5.	4		538	4	Yellow	Default
6.	14		267	14	Brown	Default
7.	7		523		R255 G63 B92	
8.	2		4,450		R30 G49 B102	
9.	9		1,672	9	White	Default
10.	8		2,063	8	Black	Default

Production Worksheet

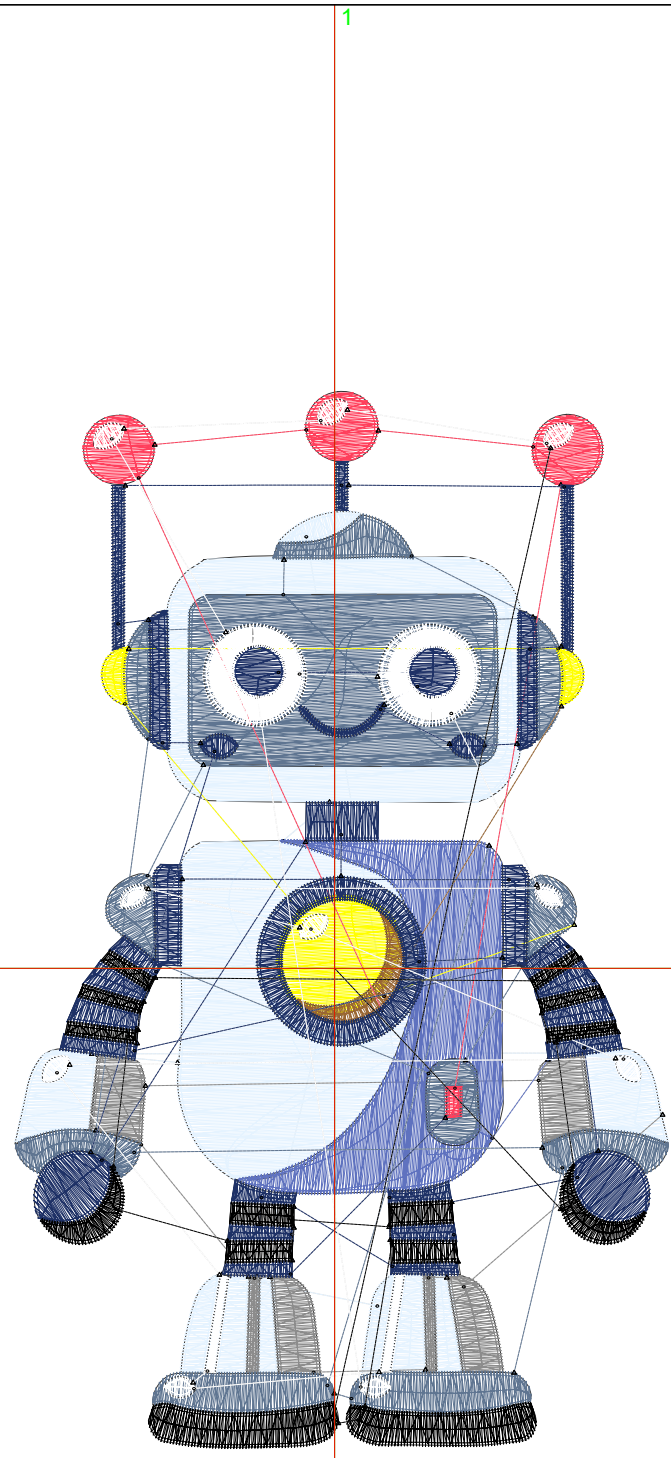
Wilcom EmbroideryStudio - Designing



Design: **5**

Title:

Stitches: 23,590
 Height: 5.50 in
 Width: 3.41 in
 Colors: 10
 Colorway: Colorway 1
 Zoom: 1:1



Machine format: Tajima
 Color changes: 9
 Stops: 10
 Trims: 87
 Appliqués: 0
 Left: 42.4 mm
 Right: 44.2 mm
 Up: 76.1 mm
 Down: 63.5 mm
 EndX: 0.00 in
 EndY: 0.00 in
 Area: 18.75 in²
 Max stitch: 10.4 mm
 Min stitch: 0.0 mm
 Max jump: 7.0 mm
 Total thread: 365.79ft
 Total bobbin: 123.09ft

Stop Sequence:

#	N#	Color	St.	Code	Name	Chart
1.	10		4,868		R229 G243 B255	
2.	1		1,185		R140 G140 B140	
3.	6		1,620		R95 G114 B191	
4.	5		4,366		R95 G117 B145	
5.	4		712	4	Yellow	Default
6.	14		318	14	Brown	Default
7.	7		669		R255 G63 B92	
8.	2		5,356		R30 G49 B102	
9.	9		1,976	9	White	Default
10.	8		2,518	8	Black	Default

Production Worksheet

Wilcom EmbroideryStudio - Designing



Design: **6**

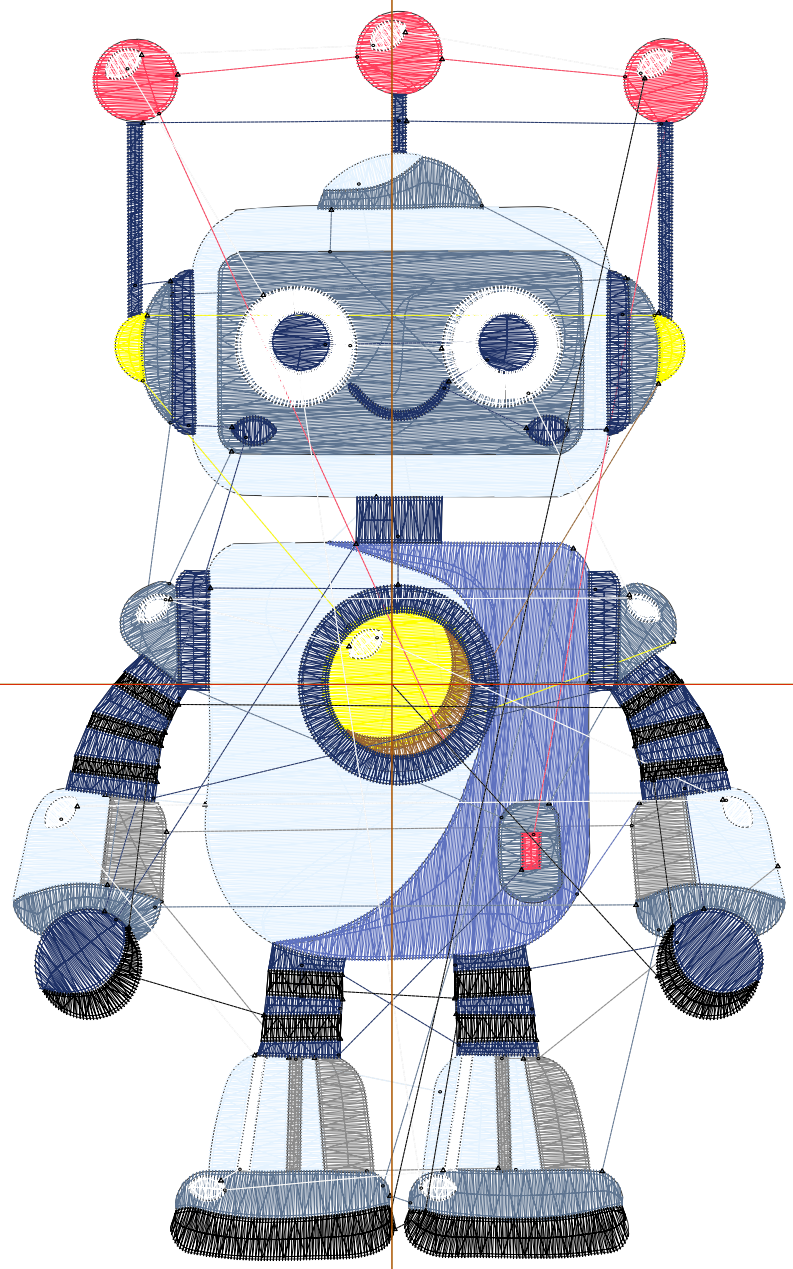
Title:

Stitches: 28,849
 Height: 6.50 in
 Width: 4.03 in
 Colors: 10
 Colorway: Colorway 1
 Zoom: 1:1

Machine format: Tajima
 Color changes: 9
 Stops: 10
 Trims: 89
 Appliqués: 0
 Left: 50.3 mm
 Right: 52.1 mm
 Up: 88.9 mm
 Down: 76.2 mm
 EndX: 0.00 in
 EndY: 0.00 in
 Area: 26.22 in²
 Max stitch: 12.1 mm
 Min stitch: 0.0 mm
 Max jump: 7.0 mm
 Total thread: 472.53ft
 Total bobbin: 165.90ft

Stop Sequence:

#	N#	Color	St.	Code	Name	Chart
1.	10		6,120		R229 G243 B255	
2.	1		1,472		R140 G140 B140	
3.	6		2,086		R95 G114 B191	
4.	5		5,427		R95 G117 B145	
5.	4		885	4	Yellow	Default
6.	14		366	14	Brown	Default
7.	7		836		R255 G63 B92	
8.	2		6,292		R30 G49 B102	
9.	9		2,373	9	White	Default
10.	8		2,990	8	Black	Default



Production Worksheet

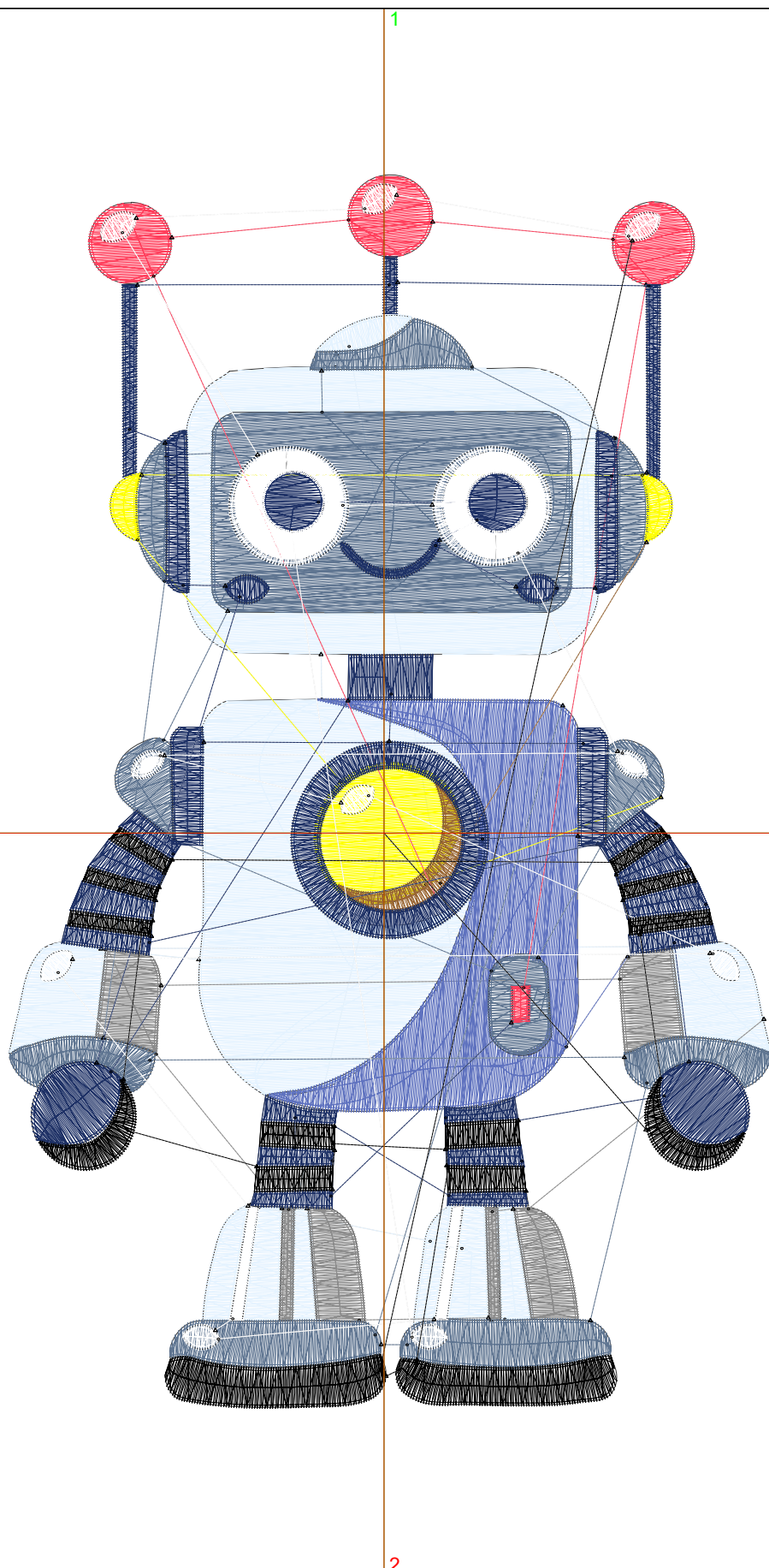
Wilcom EmbroideryStudio - Designing



Design: **7**

Title:

Stitches: 34,928
 Height: 7.50 in
 Width: 4.65 in
 Colors: 10
 Colorway: Colorway 1
 Zoom: 1:1



Machine format: Tajima
 Color changes: 9
 Stops: 10
 Trims: 92
 Appliqués: 0
 Left: 58.1 mm
 Right: 59.9 mm
 Up: 101.6 mm
 Down: 88.9 mm
 EndX: 0.00 in
 EndY: 0.00 in
 Area: 34.86 in²
 Max stitch: 11.0 mm
 Min stitch: 0.1 mm
 Max jump: 7.0 mm
 Total thread: 595.86ft
 Total bobbin: 215.34ft

Stop Sequence:

#	N#	Color	St.	Code	Name	Chart
1.	10		7,667		R229 G243 B255	
2.	1		1,786		R140 G140 B140	
3.	6		2,639		R95 G114 B191	
4.	5		6,625		R95 G117 B145	
5.	4		1,081	4	Yellow	Default
6.	14		432	14	Brown	Default
7.	7		1,023		R255 G63 B92	
8.	2		7,356		R30 G49 B102	
9.	9		2,788	9	White	Default
10.	8		3,529	8	Black	Default