

Production Worksheet

Wilcom EmbroideryStudio - Designing



Design: **3**

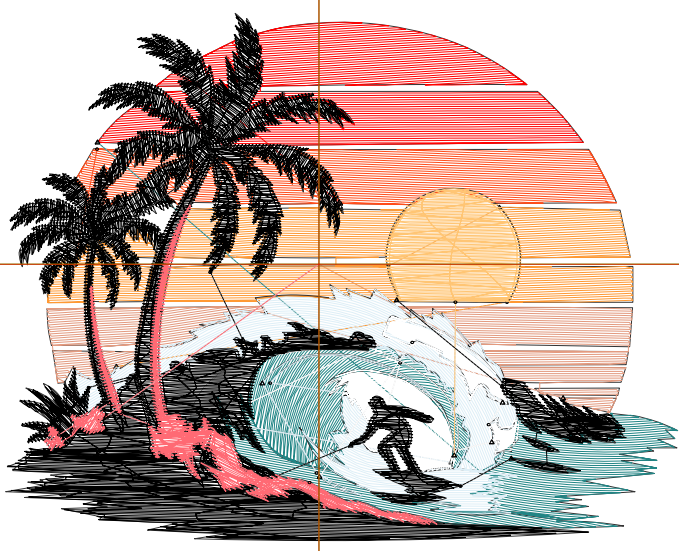
Title:

Stitches: 17,610
 Height: 2.74 in
 Width: 3.49 in
 Colors: 10
 Colorway: Colorway 1
 Zoom: 1:1

Machine format: Tajima
 Color changes: 9
 Stops: 10
 Trims: 31
 Appliqués: 0
 Left: 41.2 mm
 Right: 47.5 mm
 Up: 33.0 mm
 Down: 36.5 mm
 EndX: 0.00 in
 EndY: 0.00 in
 Area 9.55 in²
 Max stitch: 7.9 mm
 Min stitch: 0.0 mm
 Max jump: 7.0 mm
 Total thread: 245.11ft
 Total bobbin: 74.83ft

Stop Sequence:

#	N#	Color	St.	Code	Name	Chart
1.	6		681		R227 G154 B127	
2.	12		1,272	12	Orange	Default
3.	4		856		R255 G76 B26	
4.	3		952	3	Red	Default
5.	1		1,248		R33 G133 B133	
6.	2		1,248		R222 G239 B247	
7.	9		545	9	White	Default
8.	5		473		R255 G197 B116	
9.	8		9,002	8	Black	Default
10.	7		1,331		R255 G106 B116	



Production Worksheet

Wilcom EmbroideryStudio - Designing



Design: **4**

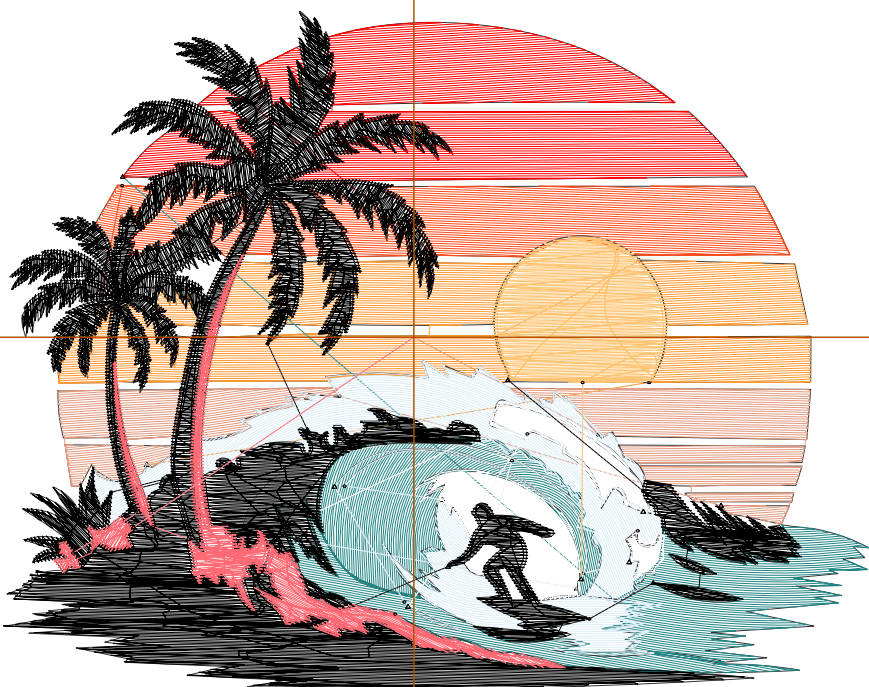
Title:

Stitches: 24,388
 Height: 3.52 in
 Width: 4.51 in
 Colors: 10
 Colorway: Colorway 1
 Zoom: 1:1

Machine format: Tajima
 Color changes: 9
 Stops: 10
 Trims: 35
 Appliqués: 0
 Left: 54.3 mm
 Right: 60.2 mm
 Up: 42.9 mm
 Down: 46.5 mm
 EndX: 0.00 in
 EndY: 0.00 in
 Area: 15.87 in²
 Max stitch: 10.1 mm
 Min stitch: 0.0 mm
 Max jump: 6.6 mm
 Total thread: 359.78ft
 Total bobbin: 116.43ft

Stop Sequence:

#	N#	Color	St.	Code	Name	Chart
1.	6		973		R227 G154 B127	
2.	12		1,777	12	Orange	Default
3.	4		1,224		R255 G76 B26	
4.	3		1,443	3	Red	Default
5.	1		1,884		R33 G133 B133	
6.	2		1,762		R222 G239 B247	
7.	9		739	9	White	Default
8.	5		722		R255 G197 B116	
9.	8		12,045	8	Black	Default
10.	7		1,817		R255 G106 B116	



Production Worksheet

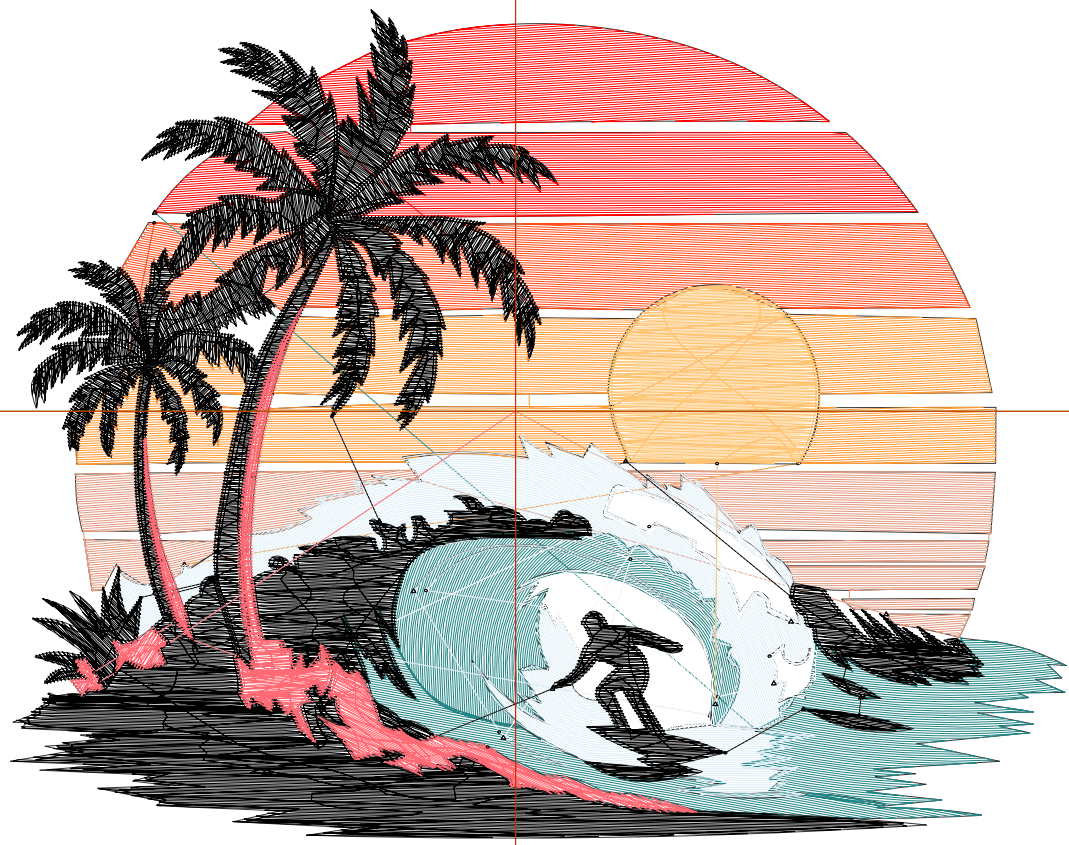
Wilcom EmbroideryStudio - Designing



Design: **5**

Title:

Stitches: 31,576
Height: 4.31 in
Width: 5.48 in
Colors: 10
Colorway: Colorway 1
Zoom: 1:1



Production Worksheet

Wilcom EmbroideryStudio - Designing



Design: **5**

Title:

Stitches: 31,576
 Height: 4.31 in
 Width: 5.48 in
 Colors: 10
 Colorway: Colorway 1
 Zoom: 1:1

Machine format: Tajima
 Color changes: 9
 Stops: 10
 Trims: 39
 Appliqués: 0
 Left: 66.5 mm
 Right: 72.7 mm
 Up: 53.1 mm
 Down: 56.4 mm
 EndX: 0.00 in
 EndY: 0.00 in
 Area 23.62 in²
 Max stitch: 11.0 mm
 Min stitch: 0.0 mm
 Max jump: 7.0 mm
 Total thread: 489.80ft
 Total bobbin: 165.53ft

Stop Sequence:

#	N#	Color	St.	Code	Name	Chart
1.	6		1,290		R227 G154 B127	
2.	12		2,349	12	Orange	Default
3.	4		1,646		R255 G76 B26	
4.	3		1,866	3	Red	Default
5.	1		2,565		R33 G133 B133	
6.	2		2,295		R222 G239 B247	
7.	9		973	9	White	Default
8.	5		1,024		R255 G197 B116	
9.	8		15,296	8	Black	Default
10.	7		2,270		R255 G106 B116	

Production Worksheet

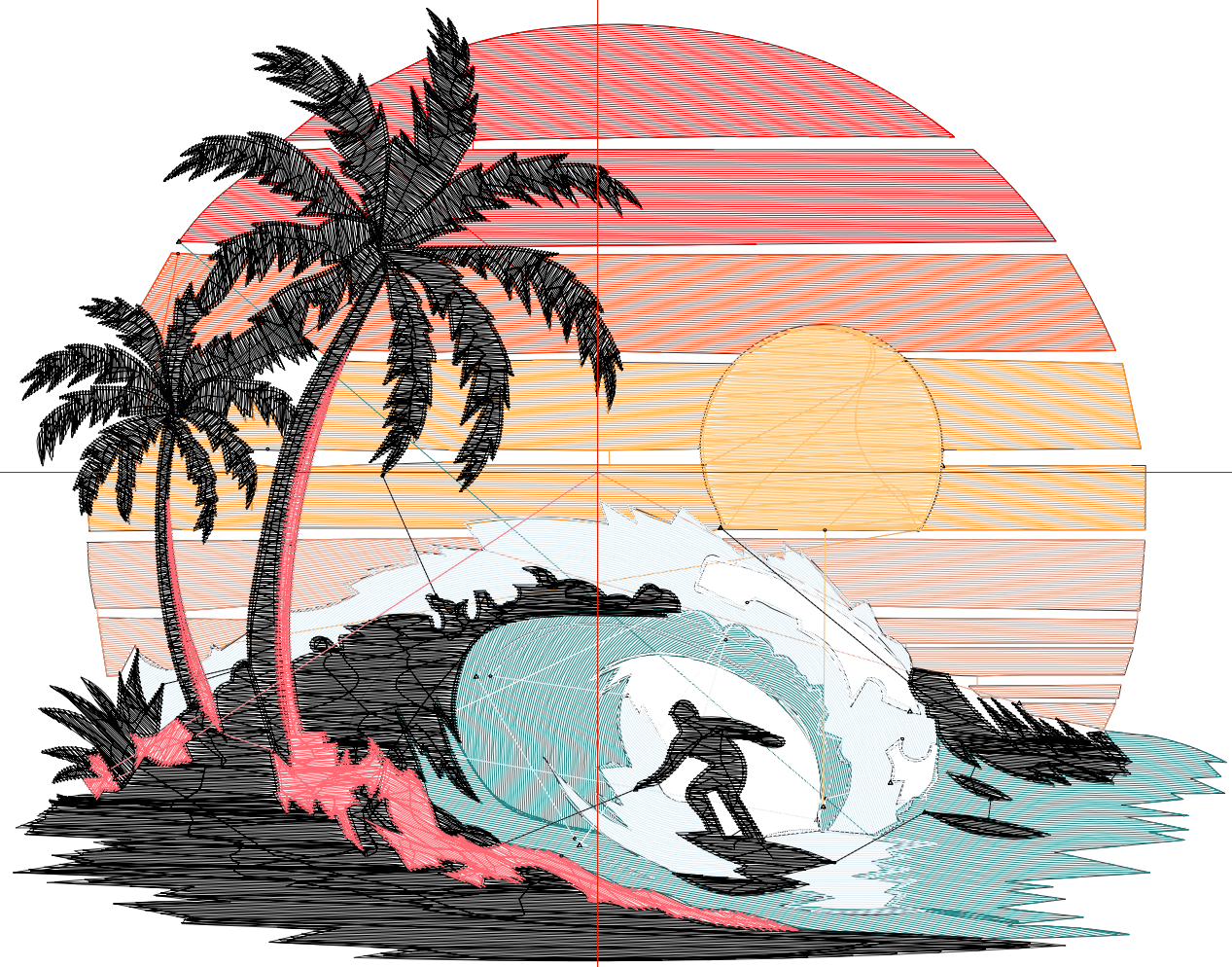
Wilcom EmbroideryStudio - Designing



Design: **6**

Title:

Stitches: 39,443
Height: 5.10 in
Width: 6.50 in
Colors: 10
Colorway: Colorway 1
Zoom: 1:1



Production Worksheet

Wilcom EmbroideryStudio - Designing



Design: **6**

Title:

Stitches: 39,443
 Height: 5.10 in
 Width: 6.50 in
 Colors: 10
 Colorway: Colorway 1
 Zoom: 1:1

Machine format: Tajima
 Color changes: 9
 Stops: 10
 Trims: 41
 Appliqués: 0
 Left: 79.5 mm
 Right: 85.5 mm
 Up: 63.1 mm
 Down: 66.4 mm
 EndX: 0.00 in
 EndY: 0.00 in
 Area 33.14 in²
 Max stitch: 9.7 mm
 Min stitch: 0.0 mm
 Max jump: 7.0 mm
 Total thread: 637.76ft
 Total bobbin: 222.62ft

Stop Sequence:

#	N#	Color	St.	Code	Name	Chart
1.	6		1,705		R227 G154 B127	
2.	12		3,029	12	Orange	Default
3.	4		2,108		R255 G76 B26	
4.	3		2,452	3	Red	Default
5.	1		3,274		R33 G133 B133	
6.	2		2,886		R222 G239 B247	
7.	9		1,191	9	White	Default
8.	5		1,366		R255 G197 B116	
9.	8		18,699	8	Black	Default
10.	7		2,731		R255 G106 B116	

Production Worksheet

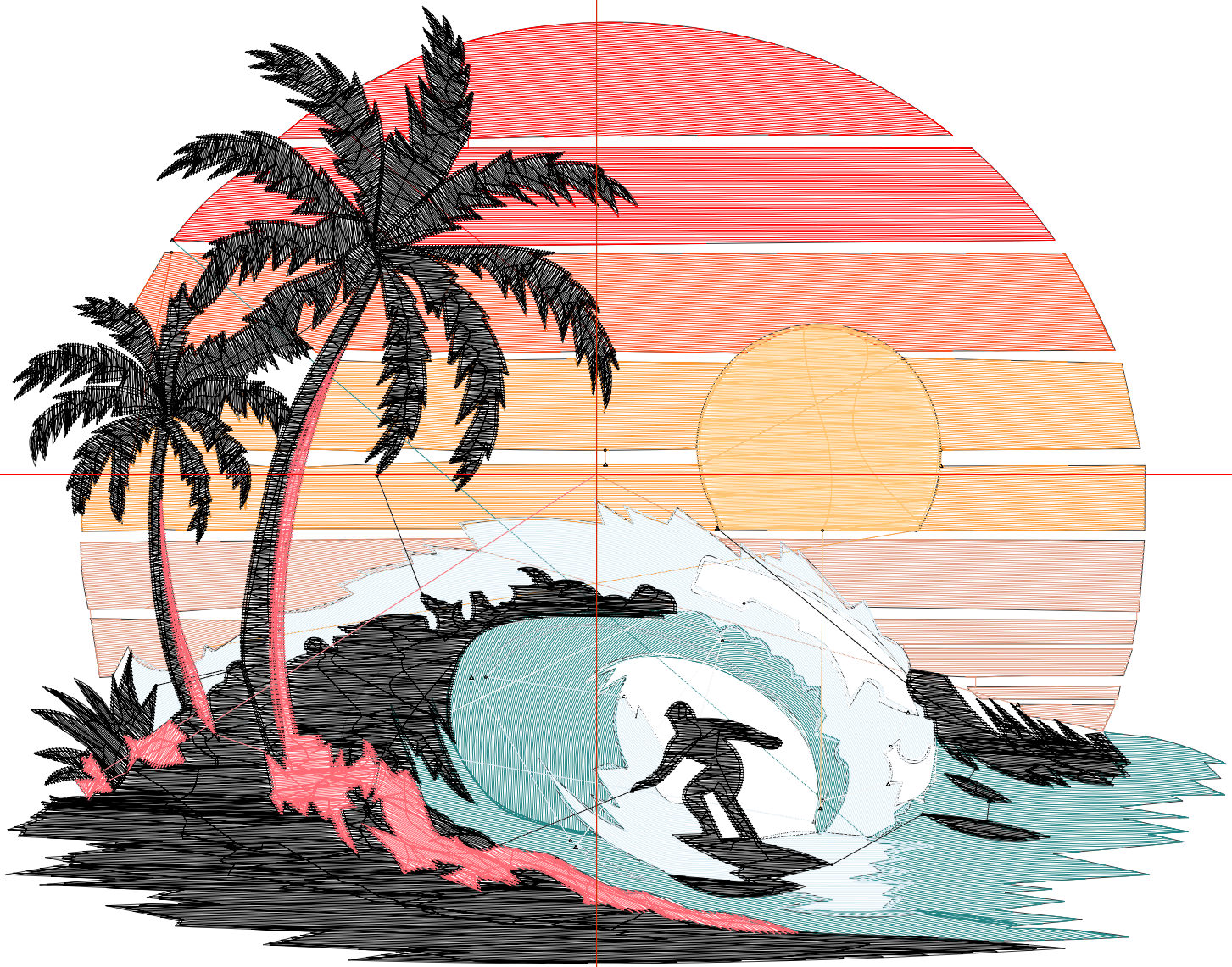
Wilcom EmbroideryStudio - Designing



Design: **7**

Title:

Stitches: 48,355
Height: 5.88 in
Width: 7.49 in
Colors: 10
Colorway: Colorway 1
Zoom: 1:1



Production Worksheet

Wilcom EmbroideryStudio - Designing



Design: **7**

Title:

Stitches: 48,355
 Height: 5.88 in
 Width: 7.49 in
 Colors: 10
 Colorway: Colorway 1
 Zoom: 1:1

Machine format: Tajima
 Color changes: 9
 Stops: 10
 Trims: 48
 Appliqués: 0
 Left: 91.9 mm
 Right: 98.3 mm
 Up: 73.1 mm
 Down: 76.4 mm
 EndX: 0.00 in
 EndY: 0.00 in
 Area 44.05 in²
 Max stitch: 11.9 mm
 Min stitch: 0.0 mm
 Max jump: 6.9 mm
 Total thread: 808.00ft
 Total bobbin: 288.84ft

Stop Sequence:

#	N#	Color	St.	Code	Name	Chart
1.	6		2,059		R227 G154 B127	
2.	12		3,722	12	Orange	Default
3.	4		2,596		R255 G76 B26	
4.	3		3,113	3	Red	Default
5.	1		4,228		R33 G133 B133	
6.	2		3,598		R222 G239 B247	
7.	9		1,488	9	White	Default
8.	5		1,753		R255 G197 B116	
9.	8		22,560	8	Black	Default
10.	7		3,236		R255 G106 B116	