

# Production Worksheet

Wilcom EmbroideryStudio - Designing



Design: **3**

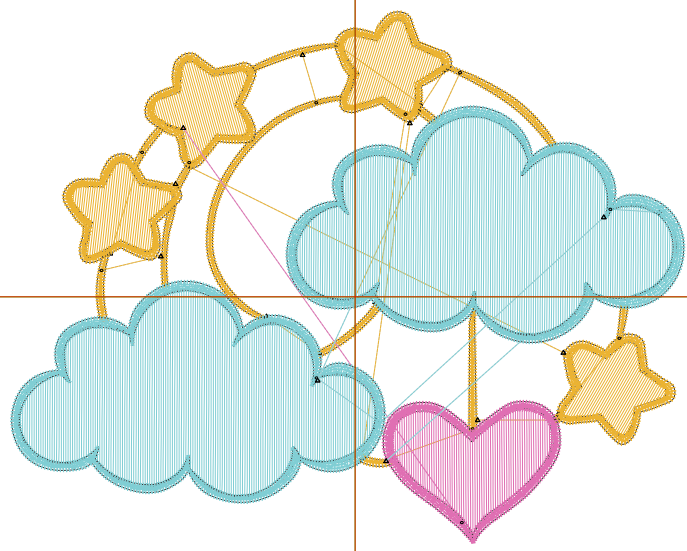
Title:

Stitches: 11,828  
 Height: 2.77 in  
 Width: 3.51 in  
 Colors: 3  
 Colorway: Colorway 1  
 Zoom: 1:1

Machine format: Tajima  
 Color changes: 2  
 Stops: 3  
 Trims: 19  
 Appliqués: 0  
 Left: 45.6 mm  
 Right: 43.7 mm  
 Up: 37.8 mm  
 Down: 32.6 mm  
 EndX: 0.00 in  
 EndY: 0.00 in  
 Area 9.74 in<sup>2</sup>  
 Max stitch: 6.5 mm  
 Min stitch: 0.0 mm  
 Max jump: 6.5 mm  
 Total thread: 151.69ft  
 Total bobbin: 43.32ft

Stop Sequence:

#	N#	Color	St.	Code	Name	Chart
1.	2		4,731	R235	G179 B50	
2.	3		1,184	R224	G111 B179	
3.	1		5,911	R128	G206 B212	



# Production Worksheet

Wilcom EmbroideryStudio - Designing



Design: **4**

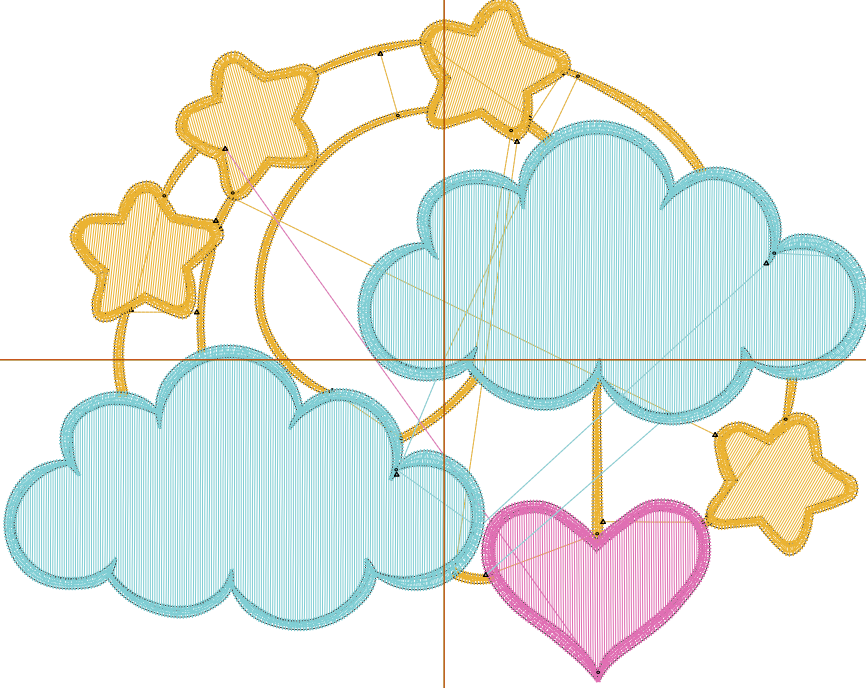
Title:

Stitches: 16,315  
 Height: 3.56 in  
 Width: 4.51 in  
 Colors: 3  
 Colorway: Colorway 1  
 Zoom: 1:1

Machine format: Tajima  
 Color changes: 2  
 Stops: 3  
 Trims: 20  
 Appliqués: 0  
 Left: 58.3 mm  
 Right: 56.3 mm  
 Up: 47.9 mm  
 Down: 42.6 mm  
 EndX: 0.00 in  
 EndY: 0.00 in  
 Area: 16.08 in<sup>2</sup>  
 Max stitch: 6.9 mm  
 Min stitch: 0.0 mm  
 Max jump: 6.9 mm  
 Total thread: 221.62ft  
 Total bobbin: 67.31ft

Stop Sequence:

#	N#	Color	St.	Code	Name	Chart
1.	2		6,392	R235 G179 B50		
2.	3		1,637	R224 G111 B179		
3.	1		8,284	R128 G206 B212		



# Production Worksheet

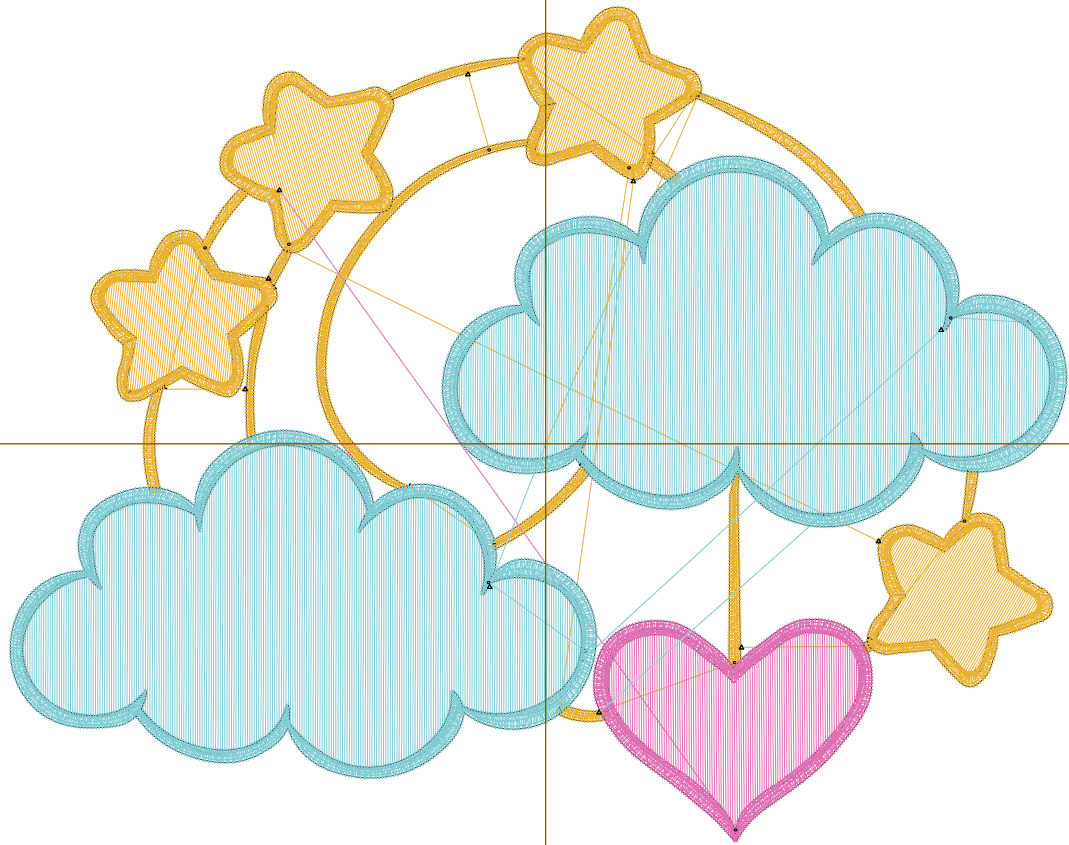
Wilcom EmbroideryStudio - Designing



Design: **5**

Title:

Stitches: 21,267  
Height: 4.35 in  
Width: 5.51 in  
Colors: 3  
Colorway: Colorway 1  
Zoom: 1:1



# Production Worksheet

Wilcom EmbroideryStudio - Designing



Design: **5**

Title:

Stitches: 21,267  
 Height: 4.35 in  
 Width: 5.51 in  
 Colors: 3  
 Colorway: Colorway 1  
 Zoom: 1:1

Machine format: Tajima  
 Color changes: 2  
 Stops: 3  
 Trims: 20  
 Appliqués: 0  
 Left: 71.0 mm  
 Right: 69.0 mm  
 Up: 57.9 mm  
 Down: 52.7 mm  
 EndX: 0.00 in  
 EndY: 0.00 in  
 Area 24.00 in<sup>2</sup>  
 Max stitch: 7.0 mm  
 Min stitch: 0.0 mm  
 Max jump: 7.0 mm  
 Total thread: 303.10ft  
 Total bobbin: 96.34ft

Stop Sequence:

#	N#	Color	St.	Code	Name	Chart
1.	2		8,287		R235 G179 B50	
2.	3		2,090		R224 G111 B179	
3.	1		10,888		R128 G206 B212	

# Production Worksheet

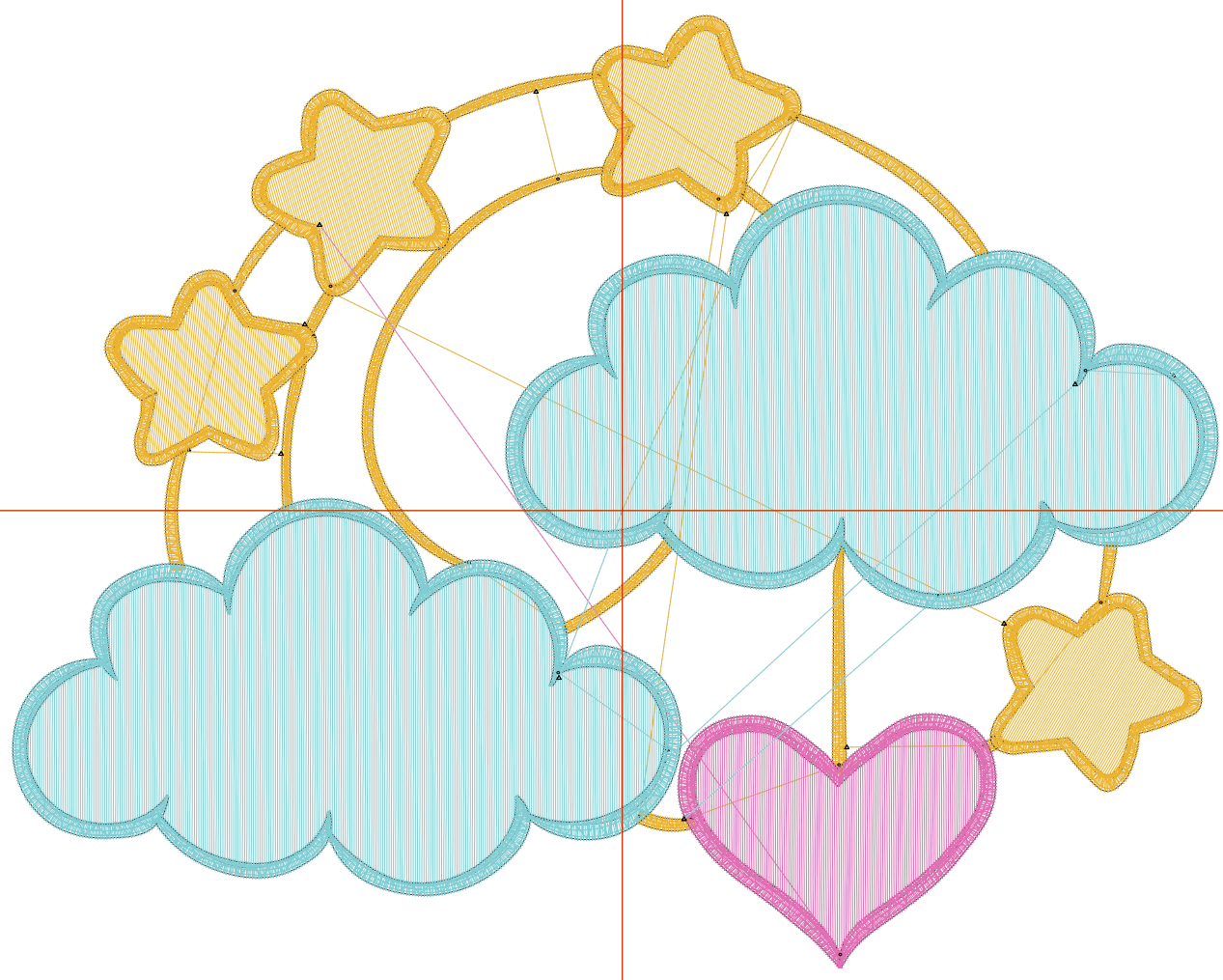
Wilcom EmbroideryStudio - Designing



Design: **6**

Title:

Stitches: 26,212  
Height: 5.14 in  
Width: 6.51 in  
Colors: 3  
Colorway: Colorway 1  
Zoom: 1:1



# Production Worksheet

Wilcom EmbroideryStudio - Designing



Design: **6**

Title:

Stitches: 26,212  
 Height: 5.14 in  
 Width: 6.51 in  
 Colors: 3  
 Colorway: Colorway 1  
 Zoom: 1:1

Machine format: Tajima  
 Color changes: 2  
 Stops: 3  
 Trims: 20  
 Appliqués: 0  
 Left: 83.7 mm  
 Right: 81.8 mm  
 Up: 67.9 mm  
 Down: 62.7 mm  
 EndX: 0.00 in  
 EndY: 0.00 in  
 Area 33.49 in<sup>2</sup>  
 Max stitch: 7.0 mm  
 Min stitch: 0.0 mm  
 Max jump: 7.0 mm  
 Total thread: 393.62ft  
 Total bobbin: 130.75ft

Stop Sequence:

#	N#	Color	St.	Code	Name	Chart
1.	2		10,052		R235 G179 B50	
2.	3		2,536		R224 G111 B179	
3.	1		13,622		R128 G206 B212	

# Production Worksheet

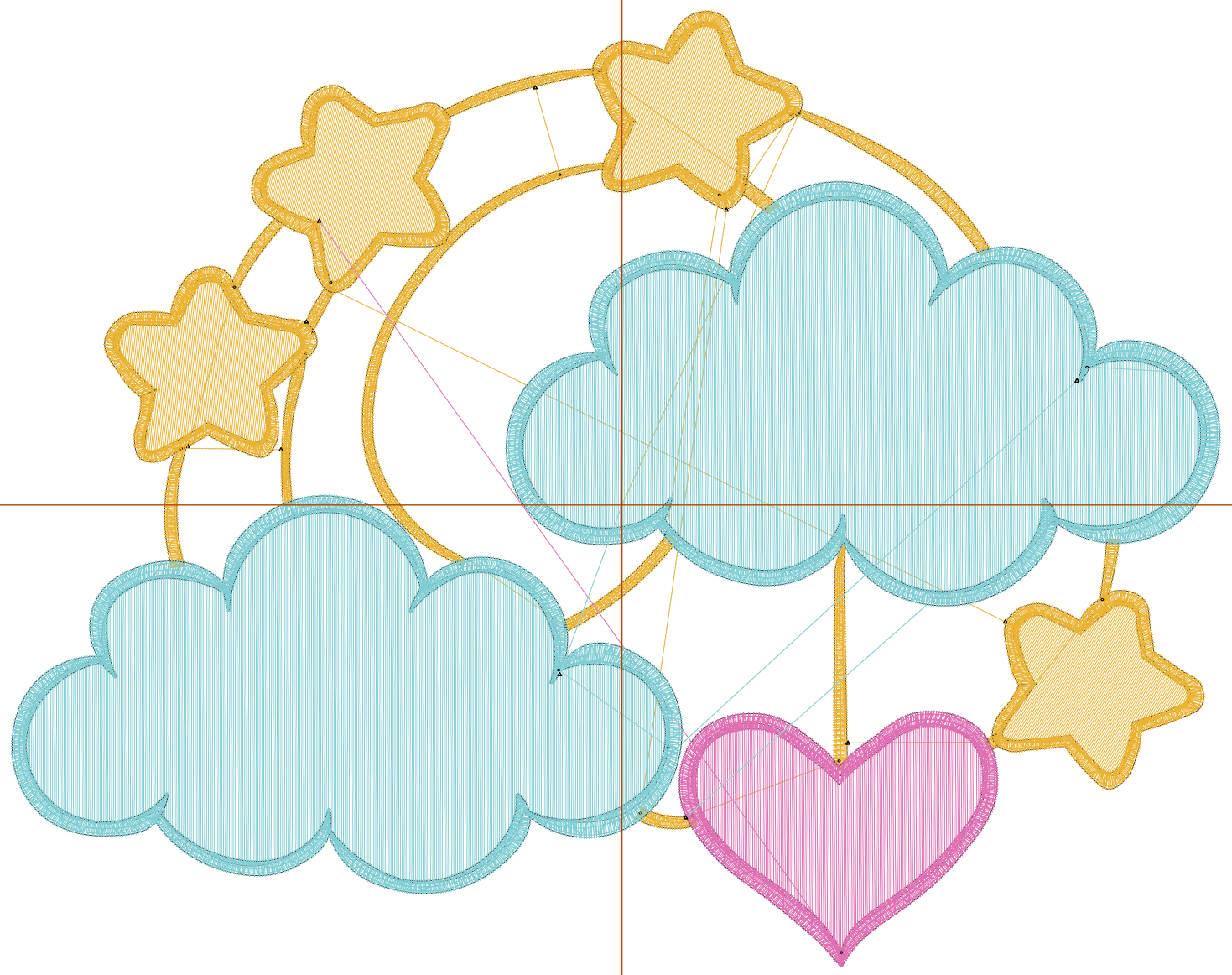
Wilcom EmbroideryStudio - Designing



Design: **7**

Title:

Stitches: 31,428  
Height: 5.93 in  
Width: 7.51 in  
Colors: 3  
Colorway: Colorway 1  
Zoom: 1:1



# Production Worksheet

Wilcom EmbroideryStudio - Designing



Design: **7**

Title:

Stitches: 31,428  
 Height: 5.93 in  
 Width: 7.51 in  
 Colors: 3  
 Colorway: Colorway 1  
 Zoom: 1:1

Machine format: Tajima  
 Color changes: 2  
 Stops: 3  
 Trims: 20  
 Appliqués: 0  
 Left: 96.4 mm  
 Right: 94.4 mm  
 Up: 77.9 mm  
 Down: 72.7 mm  
 EndX: 0.00 in  
 EndY: 0.00 in  
 Area 44.57 in<sup>2</sup>  
 Max stitch: 6.9 mm  
 Min stitch: 0.1 mm  
 Max jump: 6.9 mm  
 Total thread: 494.57ft  
 Total bobbin: 170.29ft

Stop Sequence:

#	N#	Color	St.	Code	Name	Chart
1.	2		11,791		R235 G179 B50	
2.	3		3,067		R224 G111 B179	
3.	1		16,568		R128 G206 B212	