

# Production Worksheet

Wilcom EmbroideryStudio - Designing



Design: **3**

Title:

Stitches: 8,342  
 Height: 3.33 in  
 Width: 3.51 in  
 Colors: 6  
 Colorway: Colorway 1  
 Zoom: 1:1

Machine format: Tajima  
 Color changes: 5  
 Stops: 6  
 Trims: 54  
 Appliqués: 0  
 Left: 43.2 mm  
 Right: 46.0 mm  
 Up: 49.3 mm  
 Down: 35.2 mm  
 EndX: 0.00 in  
 EndY: 0.00 in  
 Area: 11.69 in<sup>2</sup>  
 Max stitch: 7.0 mm  
 Min stitch: 0.0 mm  
 Max jump: 7.0 mm  
 Total thread: 115.73ft  
 Total bobbin: 34.98ft

Stop Sequence:

#	N#	Color	St.	Code	Name	Chart
1.	5		779	5	Aqua	Default
2.	11		1,266	11	Dark Red	Default
3.	12		1,171	12	Orange	Default
4.	2		1,214		R204 G196 B187	
5.	1		3,322		R28 G100 B112	
6.	8		588	8	Black	Default



# Production Worksheet

Wilcom EmbroideryStudio - Designing



Design: **4**

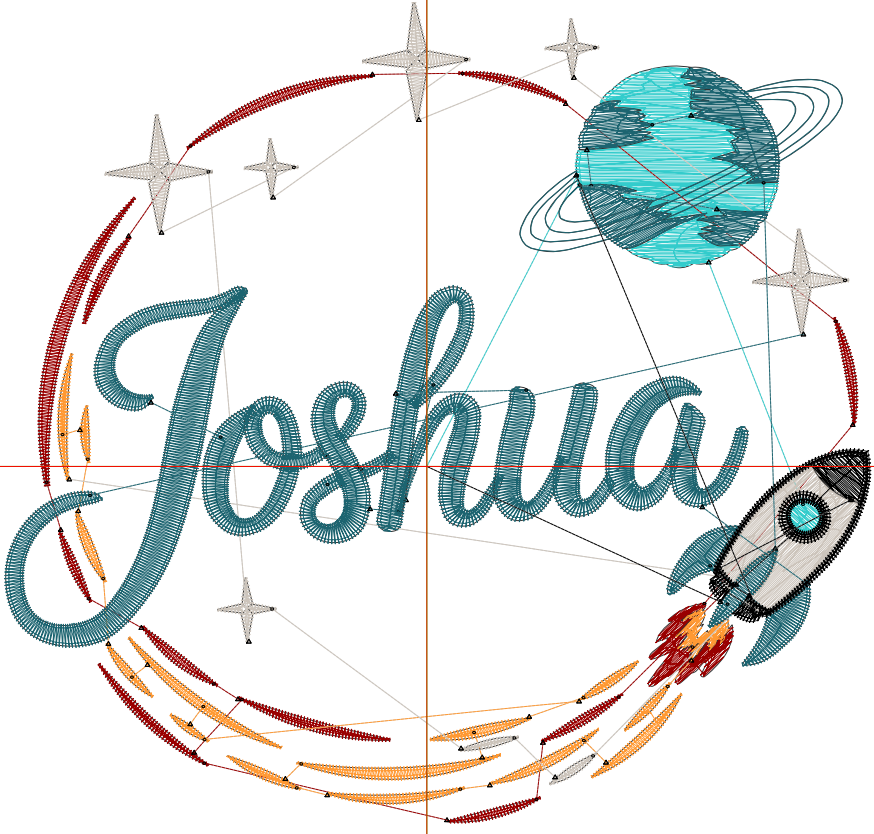
Title:

Stitches: 10,747  
 Height: 4.28 in  
 Width: 4.51 in  
 Colors: 6  
 Colorway: Colorway 1  
 Zoom: 1:1

Machine format: Tajima  
 Color changes: 5  
 Stops: 6  
 Trims: 56  
 Appliqués: 0  
 Left: 55.9 mm  
 Right: 58.7 mm  
 Up: 61.4 mm  
 Down: 47.2 mm  
 EndX: 0.00 in  
 EndY: 0.00 in  
 Area: 19.29 in<sup>2</sup>  
 Max stitch: 6.9 mm  
 Min stitch: 0.0 mm  
 Max jump: 6.9 mm  
 Total thread: 162.85ft  
 Total bobbin: 53.55ft

Stop Sequence:

#	N#	Color	St.	Code	Name	Chart
1.	5		1,053	5	Aqua	Default
2.	11		1,609	11	Dark Red	Default
3.	12		1,480	12	Orange	Default
4.	2		1,558		R204 G196 B187	
5.	1		4,323		R28 G100 B112	
6.	8		722	8	Black	Default



# Production Worksheet

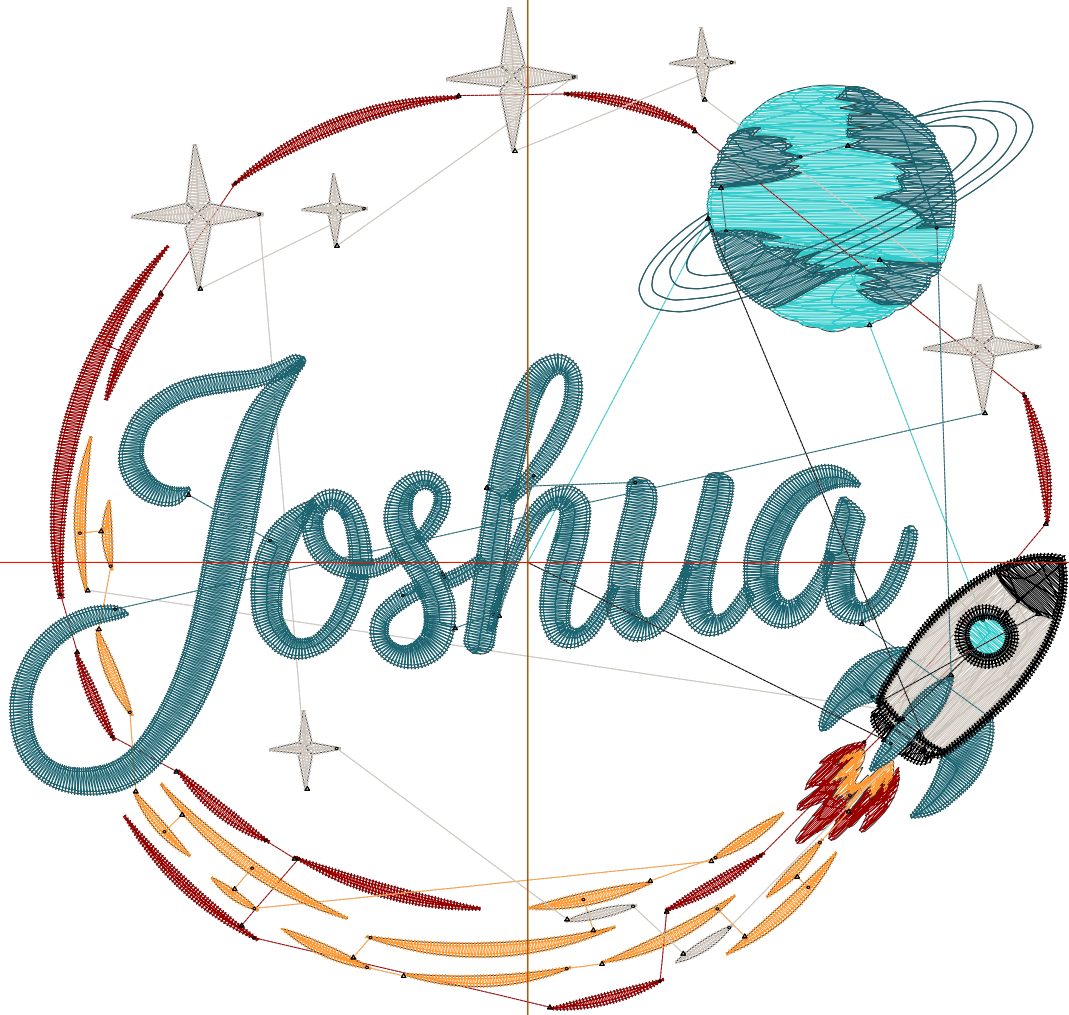
Wilcom EmbroideryStudio - Designing



Design: **5**

Title:

Stitches: 13,309  
Height: 5.22 in  
Width: 5.51 in  
Colors: 6  
Colorway: Colorway 1  
Zoom: 1:1



# Production Worksheet

Wilcom EmbroideryStudio - Designing



Design: **5**

Title:

Stitches: 13,309  
 Height: 5.22 in  
 Width: 5.51 in  
 Colors: 6  
 Colorway: Colorway 1  
 Zoom: 1:1

Machine format: Tajima  
 Color changes: 5  
 Stops: 6  
 Trims: 58  
 Appliqués: 0  
 Left: 68.6 mm  
 Right: 71.4 mm  
 Up: 73.4 mm  
 Down: 59.3 mm  
 EndX: 0.00 in  
 EndY: 0.00 in  
 Area 28.80 in<sup>2</sup>  
 Max stitch: 7.0 mm  
 Min stitch: 0.0 mm  
 Max jump: 7.0 mm  
 Total thread: 218.16ft  
 Total bobbin: 76.36ft

Stop Sequence:

#	N#	Color	St.	Code	Name	Chart
1.	5		1,392	5	Aqua	Default
2.	11		1,954	11	Dark Red	Default
3.	12		1,783	12	Orange	Default
4.	2		1,932		R204 G196 B187	
5.	1		5,355		R28 G100 B112	
6.	8		891	8	Black	Default

# Production Worksheet

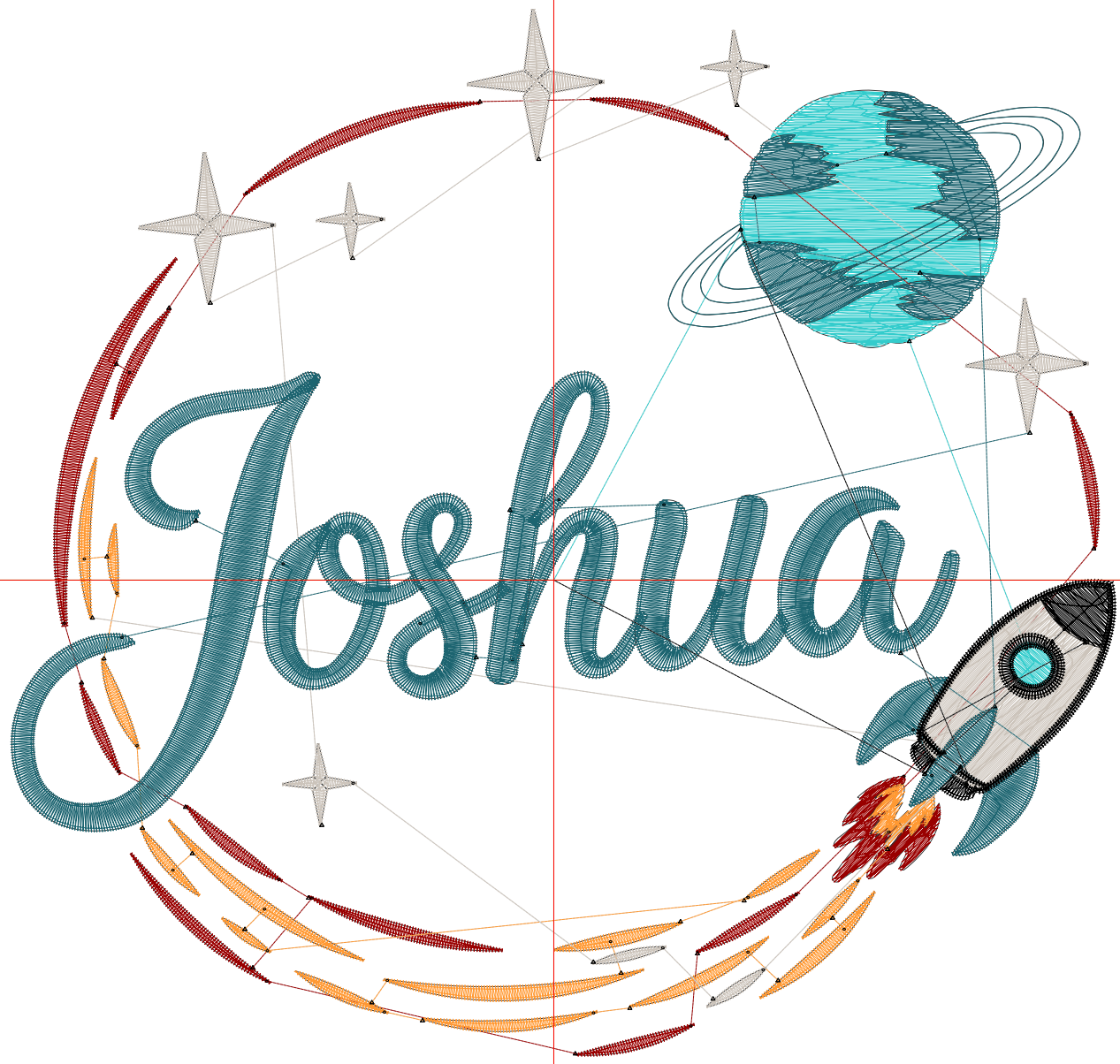
Wilcom EmbroideryStudio - Designing



Design: **6**

Title:

Stitches: 16,008  
Height: 6.17 in  
Width: 6.51 in  
Colors: 6  
Colorway: Colorway 1  
Zoom: 1:1



# Production Worksheet

Wilcom EmbroideryStudio - Designing



Design: **6**

Title:

Stitches: 16,008  
 Height: 6.17 in  
 Width: 6.51 in  
 Colors: 6  
 Colorway: Colorway 1  
 Zoom: 1:1

Machine format: Tajima  
 Color changes: 5  
 Stops: 6  
 Trims: 59  
 Appliqués: 0  
 Left: 81.3 mm  
 Right: 84.1 mm  
 Up: 85.5 mm  
 Down: 71.3 mm  
 EndX: 0.00 in  
 EndY: 0.00 in  
 Area 40.20 in<sup>2</sup>  
 Max stitch: 7.0 mm  
 Min stitch: 0.1 mm  
 Max jump: 7.0 mm  
 Total thread: 282.08ft  
 Total bobbin: 103.75ft

Stop Sequence:

#	N#	Color	St.	Code	Name	Chart
1.	5		1,790	5	Aqua	Default
2.	11		2,318	11	Dark Red	Default
3.	12		2,081	12	Orange	Default
4.	2		2,316		R204 G196 B187	
5.	1		6,459		R28 G100 B112	
6.	8		1,042	8	Black	Default

# Production Worksheet

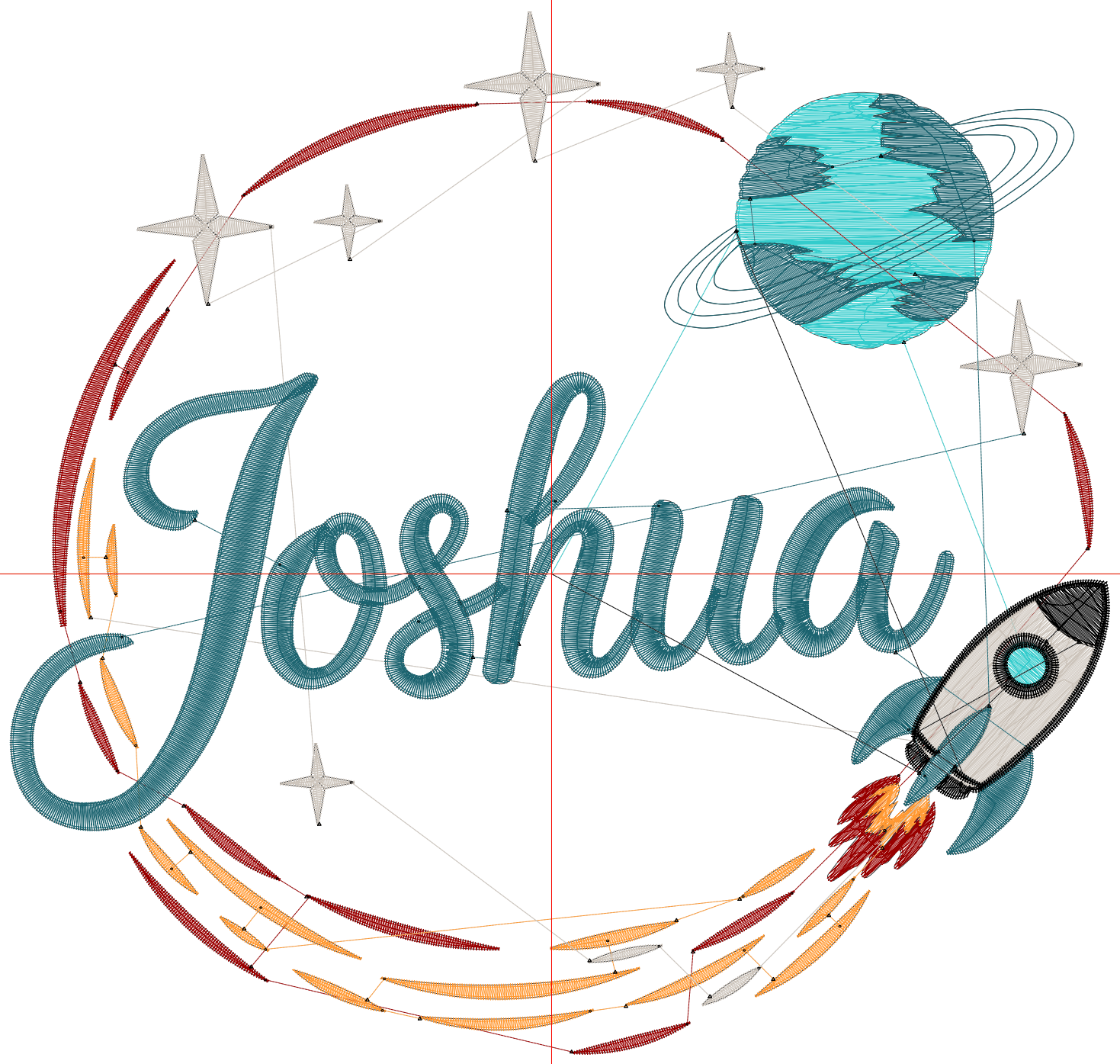
Wilcom EmbroideryStudio - Designing



Design: **7**

Title:

Stitches: 18,896  
Height: 7.12 in  
Width: 7.51 in  
Colors: 6  
Colorway: Colorway 1  
Zoom: 1:1



# Production Worksheet

Wilcom EmbroideryStudio - Designing



Design: **7**

Title:

Stitches: 18,896  
 Height: 7.12 in  
 Width: 7.51 in  
 Colors: 6  
 Colorway: Colorway 1  
 Zoom: 1:1

Machine format: Tajima  
 Color changes: 5  
 Stops: 6  
 Trims: 59  
 Appliqués: 0  
 Left: 94.0 mm  
 Right: 96.8 mm  
 Up: 97.5 mm  
 Down: 83.3 mm  
 EndX: 0.00 in  
 EndY: 0.00 in  
 Area 53.50 in<sup>2</sup>  
 Max stitch: 8.0 mm  
 Min stitch: 0.0 mm  
 Max jump: 6.9 mm  
 Total thread: 354.66ft  
 Total bobbin: 135.53ft

Stop Sequence:

#	N#	Color	St.	Code	Name	Chart
1.	5		2,241	5	Aqua	Default
2.	11		2,688	11	Dark Red	Default
3.	12		2,393	12	Orange	Default
4.	2		2,735		R204 G196 B187	
5.	1		7,621		R28 G100 B112	
6.	8		1,216	8	Black	Default