

Production Worksheet

Wilcom EmbroideryStudio - Designing



Design: **3**

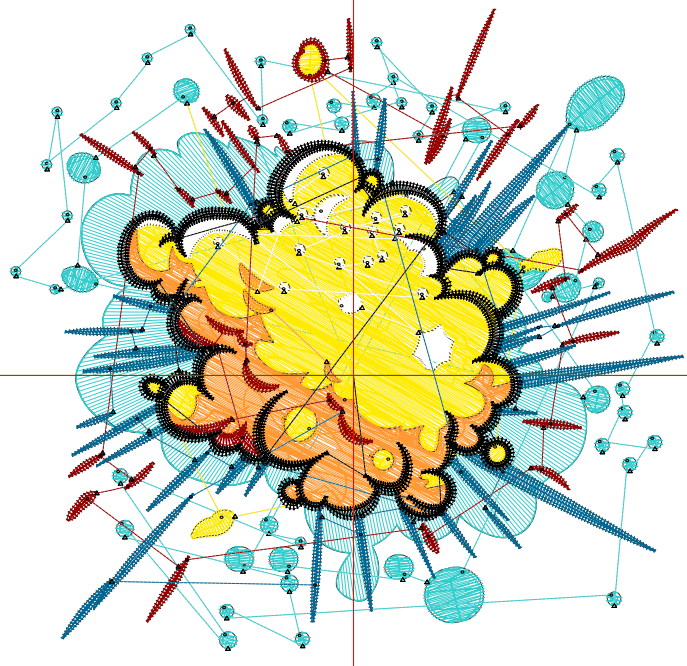
Title:

Stitches: 17,839
Height: 3.33 in
Width: 3.51 in
Colors: 7
Colorway: Colorway 1
Zoom: 1:1

Machine format: Tajima
Color changes: 6
Stops: 7
Trims: 152
Appliqués: 0
Left: 45.5 mm
Right: 43.7 mm
Up: 48.4 mm
Down: 36.1 mm
EndX: 0.00 in
EndY: 0.00 in
Area 11.68 in²
Max stitch: 12.1 mm
Min stitch: 0.0 mm
Max jump: 7.0 mm
Total thread: 241.53ft
Total bobbin: 72.40ft

Stop Sequence:

#	N#	Color	St.	Code	Name	Chart
1.	5		3,712	5	Aqua	Default
2.	1		3,456		R255 G234 B1	
3.	12		2,147	12	Orange	Default
4.	9		1,023	9	White	Default
5.	11		1,962	11	Dark Red	Default
6.	2		2,768		R0 G104 B148	
7.	8		2,769	8	Black	Default



Production Worksheet

Wilcom EmbroideryStudio - Designing



Design: **4**

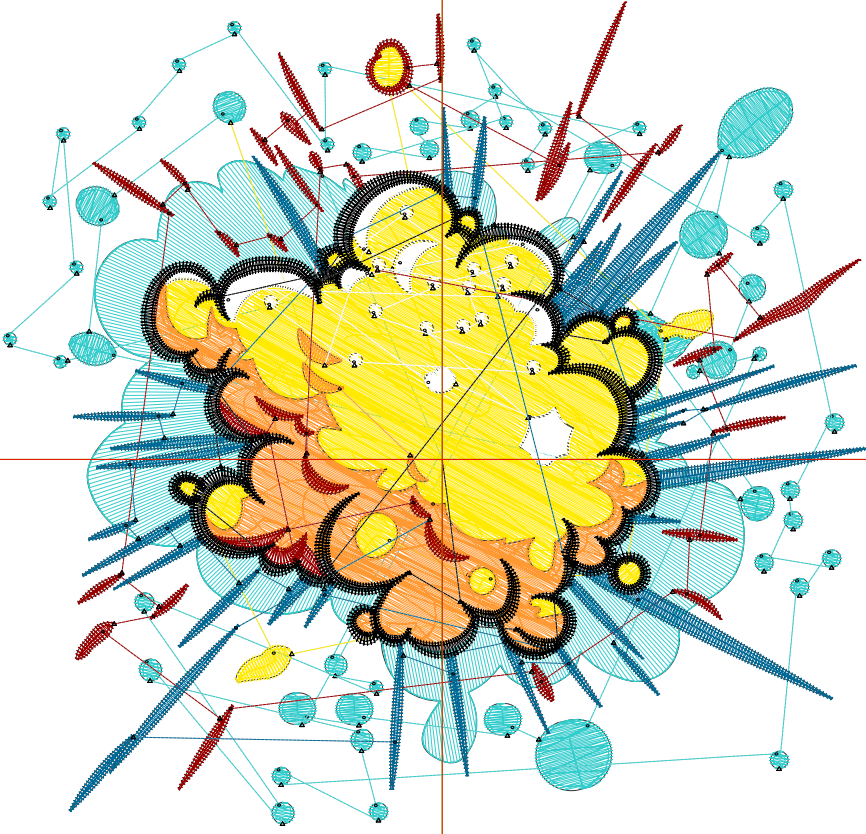
Title:

Stitches: 23,248
 Height: 4.28 in
 Width: 4.51 in
 Colors: 7
 Colorway: Colorway 1
 Zoom: 1:1

Machine format: Tajima
 Color changes: 6
 Stops: 7
 Trims: 158
 Appliqués: 0
 Left: 58.1 mm
 Right: 56.3 mm
 Up: 60.5 mm
 Down: 48.2 mm
 EndX: 0.00 in
 EndY: 0.00 in
 Area 19.30 in²
 Max stitch: 9.5 mm
 Min stitch: 0.0 mm
 Max jump: 7.0 mm
 Total thread: 341.52ft
 Total bobbin: 110.62ft

Stop Sequence:

#	N#	Color	St.	Code	Name	Chart
1.	5		4,791	5	Aqua	Default
2.	1		4,905		R255 G234 B1	
3.	12		2,998	12	Orange	Default
4.	9		1,244	9	White	Default
5.	11		2,410	11	Dark Red	Default
6.	2		3,483		R0 G104 B148	
7.	8		3,415	8	Black	Default



Production Worksheet

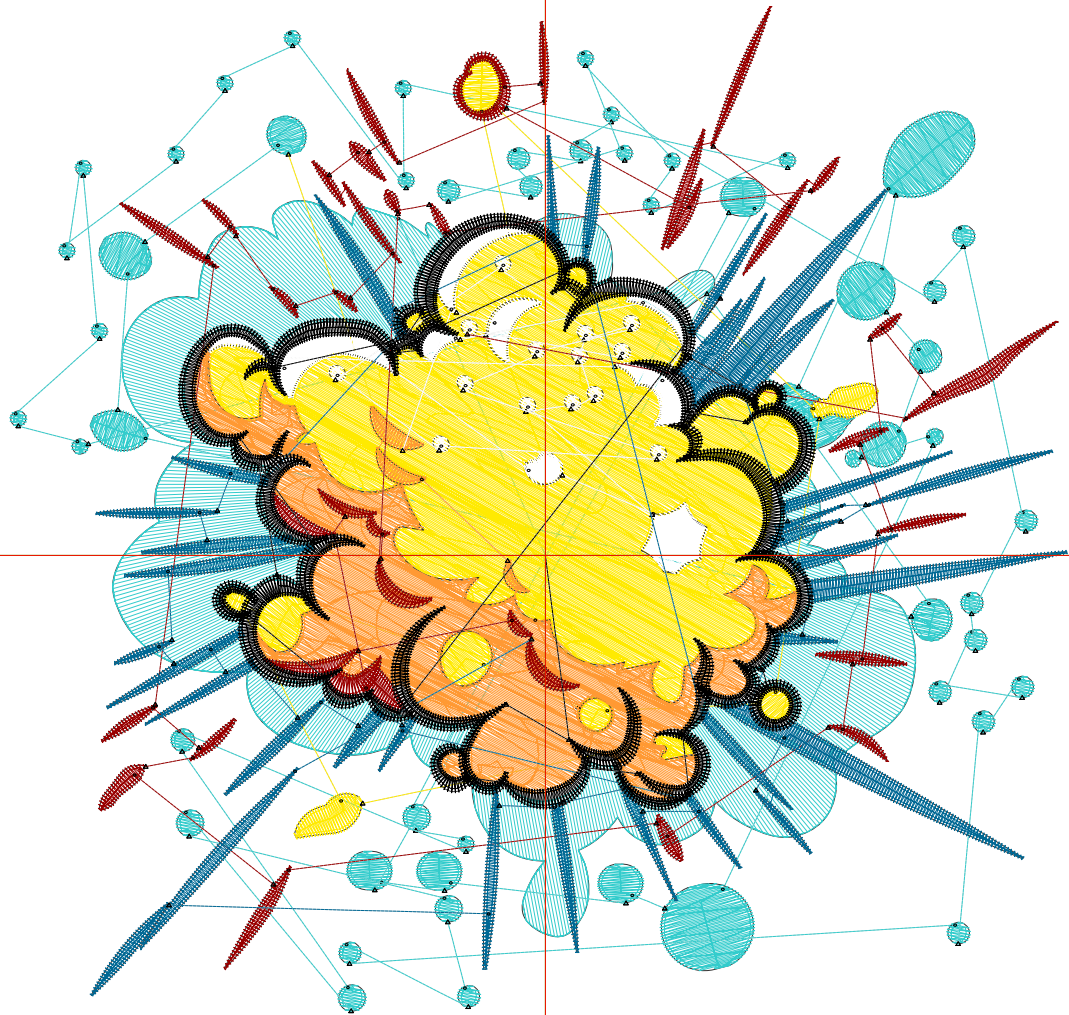
Wilcom EmbroideryStudio - Designing



Design: **5**

Title:

Stitches: 28,912
Height: 5.23 in
Width: 5.51 in
Colors: 7
Colorway: Colorway 1
Zoom: 1:1



Production Worksheet

Wilcom EmbroideryStudio - Designing



Design: **5**

Title:

Stitches: 28,912
 Height: 5.23 in
 Width: 5.51 in
 Colors: 7
 Colorway: Colorway 1
 Zoom: 1:1

Machine format: Tajima
 Color changes: 6
 Stops: 7
 Trims: 163
 Appliqués: 0
 Left: 70.9 mm
 Right: 69.0 mm
 Up: 72.6 mm
 Down: 60.3 mm
 EndX: 0.00 in
 EndY: 0.00 in
 Area 28.82 in²
 Max stitch: 6.9 mm
 Min stitch: 0.0 mm
 Max jump: 7.0 mm
 Total thread: 452.95ft
 Total bobbin: 154.63ft

Stop Sequence:

#	N#	Color	St.	Code	Name	Chart
1.	5		6,051	5	Aqua	Default
2.	1		6,450		R255 G234 B1	
3.	12		3,818	12	Orange	Default
4.	9		1,461	9	White	Default
5.	11		2,852	11	Dark Red	Default
6.	2		4,232		R0 G104 B148	
7.	8		4,046	8	Black	Default

Production Worksheet

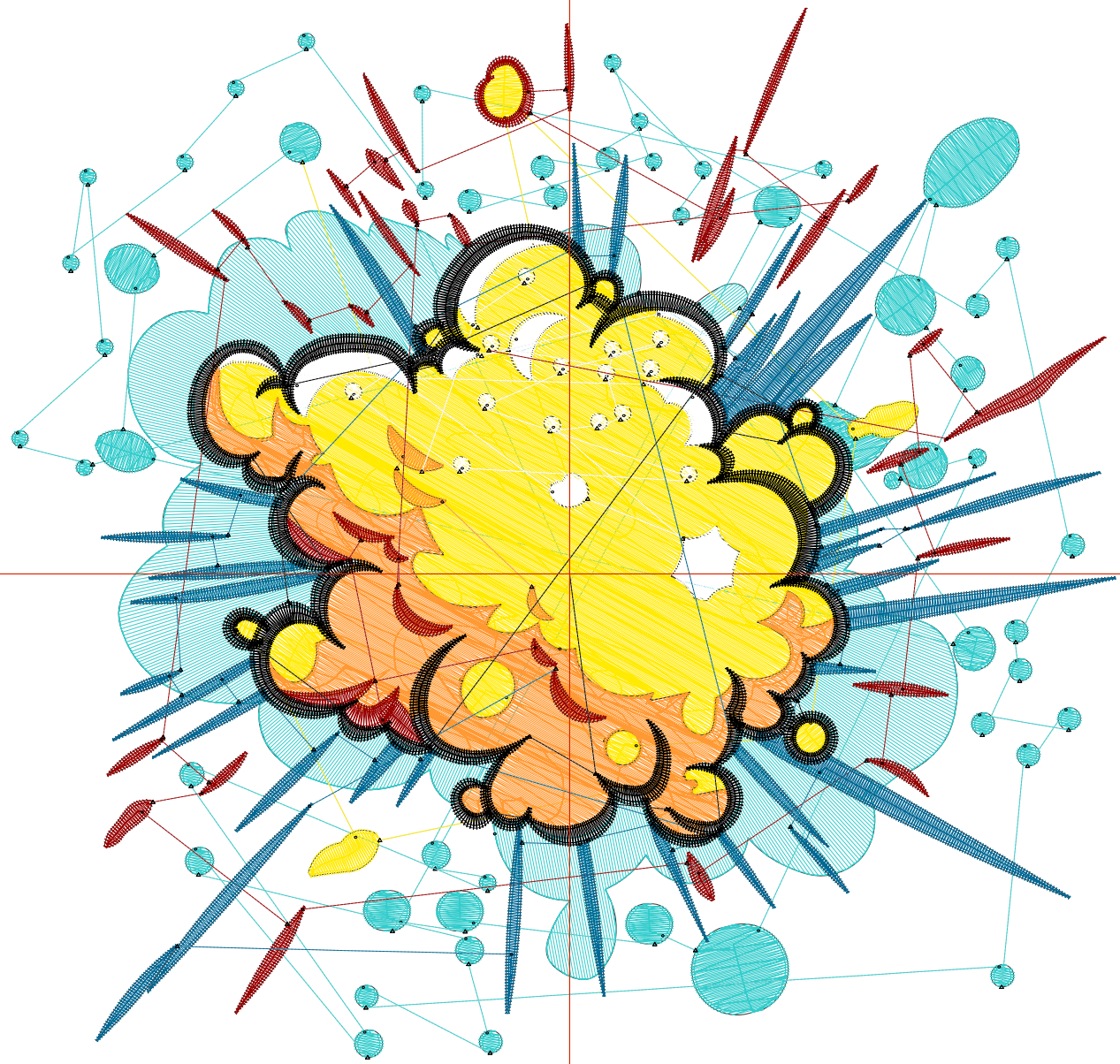
Wilcom EmbroideryStudio - Designing



Design: **6**

Title:

Stitches: 35,059
Height: 6.18 in
Width: 6.51 in
Colors: 7
Colorway: Colorway 1
Zoom: 1:1



Production Worksheet

Wilcom EmbroideryStudio - Designing



Design: **6**

Title:

Stitches: 35,059
 Height: 6.18 in
 Width: 6.51 in
 Colors: 7
 Colorway: Colorway 1
 Zoom: 1:1

Machine format: Tajima
 Color changes: 6
 Stops: 7
 Trims: 166
 Appliqués: 0
 Left: 83.6 mm
 Right: 81.7 mm
 Up: 84.7 mm
 Down: 72.4 mm
 EndX: 0.00 in
 EndY: 0.00 in
 Area 40.24 in²
 Max stitch: 11.8 mm
 Min stitch: 0.0 mm
 Max jump: 7.0 mm
 Total thread: 581.03ft
 Total bobbin: 206.63ft

Stop Sequence:

#	N#	Color	St.	Code	Name	Chart
1.	5		7,378	5	Aqua	Default
2.	1		8,258		R255 G234 B1	
3.	12		4,760	12	Orange	Default
4.	9		1,692	9	White	Default
5.	11		3,304	11	Dark Red	Default
6.	2		4,960		R0 G104 B148	
7.	8		4,705	8	Black	Default

Production Worksheet

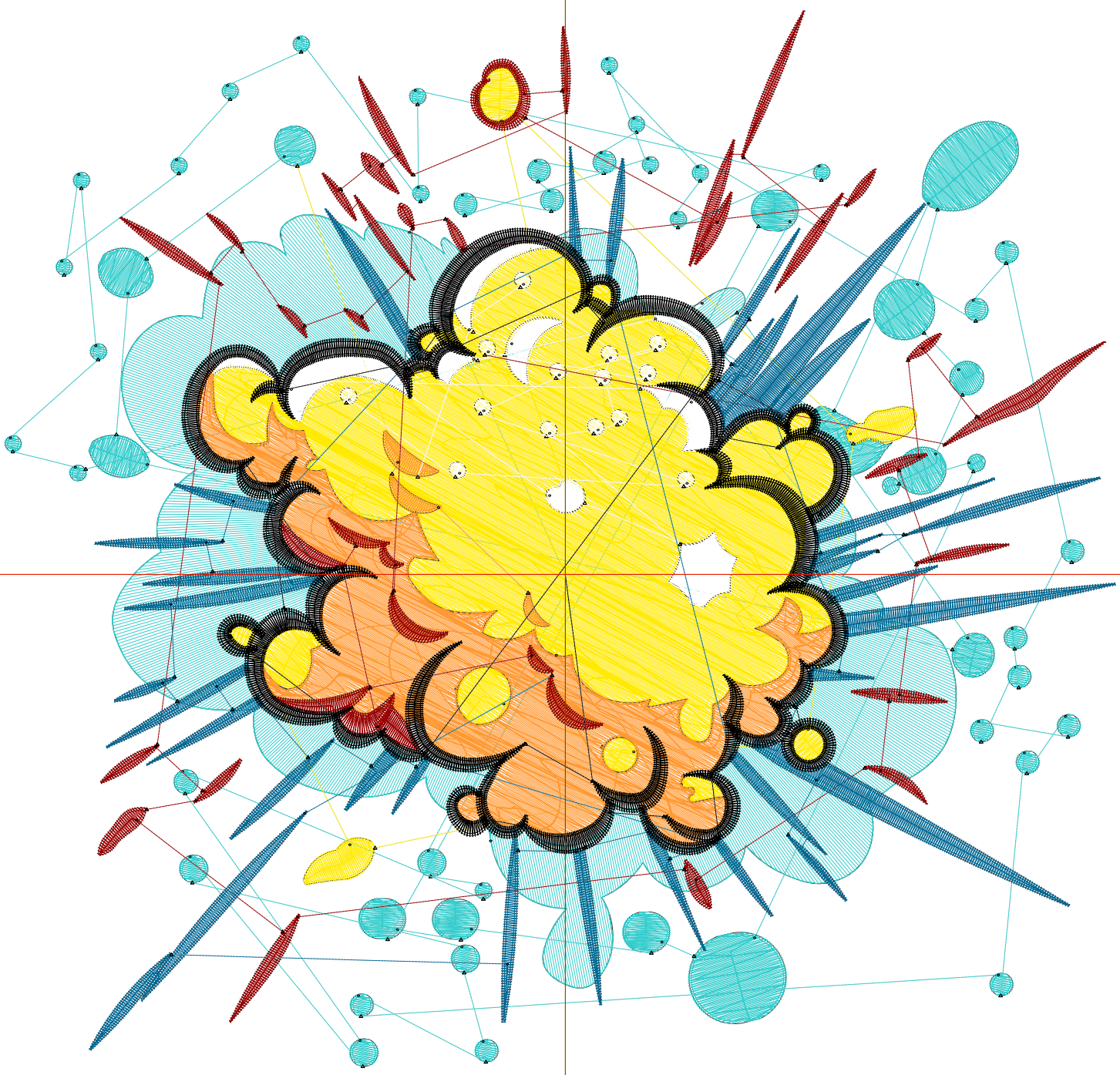
Wilcom EmbroideryStudio - Designing



Design: **7**

Title:

Stitches: 41,640
Height: 7.13 in
Width: 7.51 in
Colors: 7
Colorway: Colorway 1
Zoom: 1:1



Production Worksheet

Wilcom EmbroideryStudio - Designing



Design: **7**

Title:

Stitches: 41,640
 Height: 7.13 in
 Width: 7.51 in
 Colors: 7
 Colorway: Colorway 1
 Zoom: 1:1

Machine format: Tajima
 Color changes: 6
 Stops: 7
 Trims: 166
 Appliqués: 0
 Left: 96.3 mm
 Right: 94.4 mm
 Up: 96.8 mm
 Down: 84.4 mm
 EndX: 0.00 in
 EndY: 0.00 in
 Area 53.56 in²
 Max stitch: 11.3 mm
 Min stitch: 0.0 mm
 Max jump: 7.0 mm
 Total thread: 724.79ft
 Total bobbin: 266.23ft

Stop Sequence:

#	N#	Color	St.	Code	Name	Chart
1.	5		8,840	5	Aqua	Default
2.	1		10,215		R255 G234 B1	
3.	12		5,833	12	Orange	Default
4.	9		1,898	9	White	Default
5.	11		3,771	11	Dark Red	Default
6.	2		5,693		R0 G104 B148	
7.	8		5,388	8	Black	Default