

Production Worksheet

Wilcom EmbroideryStudio - Designing



Design: **3**

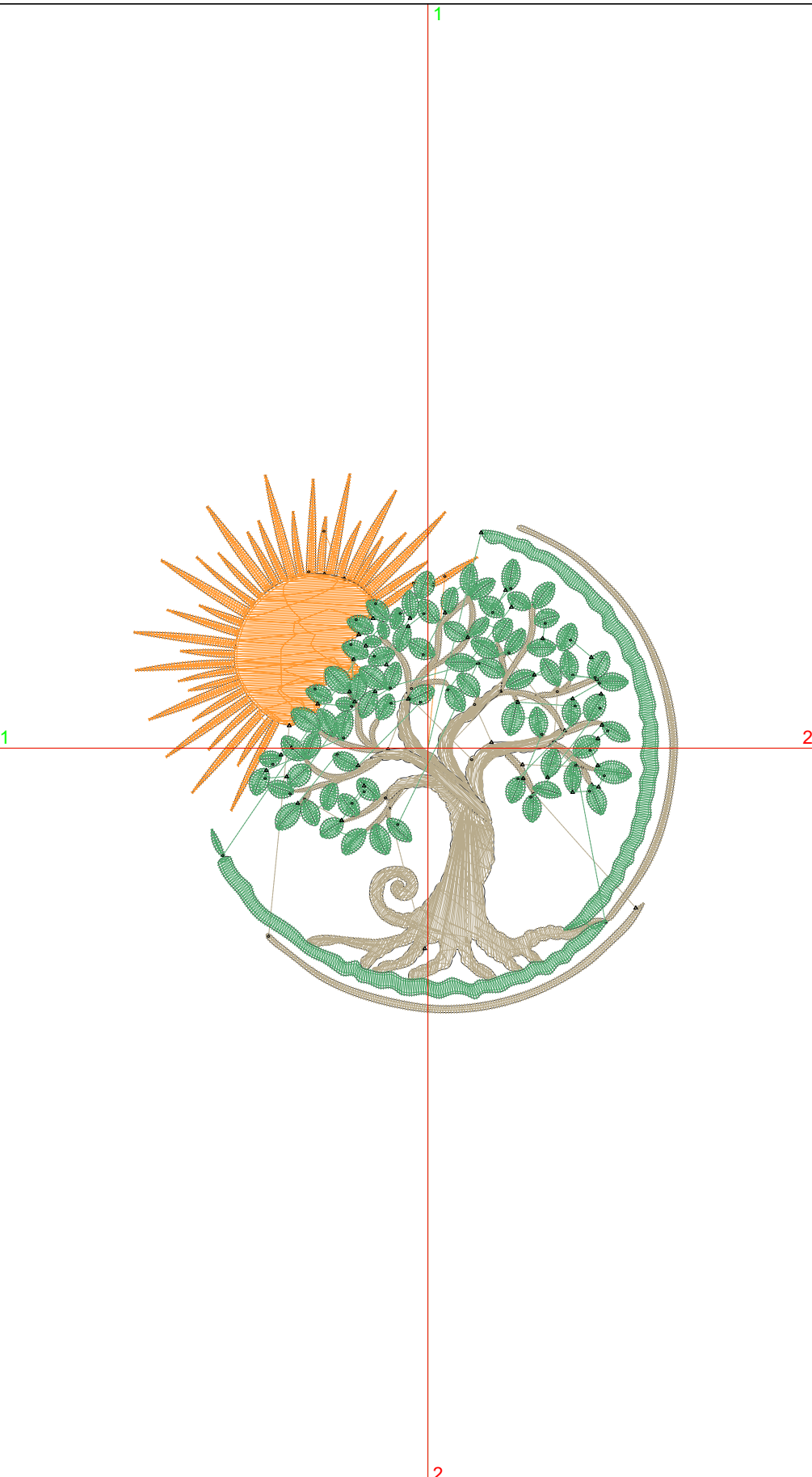
Title:

Stitches: 17,342
 Height: 3.48 in
 Width: 3.51 in
 Colors: 3
 Colorway: Colorway 1
 Zoom: 1:1

Machine format: Tajima
 Color changes: 2
 Stops: 3
 Trims: 57
 Appliqués: 0
 Left: 48.1 mm
 Right: 41.0 mm
 Up: 44.9 mm
 Down: 43.4 mm
 EndX: 0.00 in
 EndY: 0.00 in
 Area: 12.19 in²
 Max stitch: 6.9 mm
 Min stitch: 0.0 mm
 Max jump: 6.9 mm
 Total thread: 223.33ft
 Total bobbin: 64.33ft

Stop Sequence:

#	N#	Color	St.	Code	Name	Chart
1.	12		3,570	12	Orange	Default
2.	3		6,360		R184 G171 B140	
3.	2		7,410		R80 G166 B109	



Production Worksheet

Wilcom EmbroideryStudio - Designing



Design: **4**

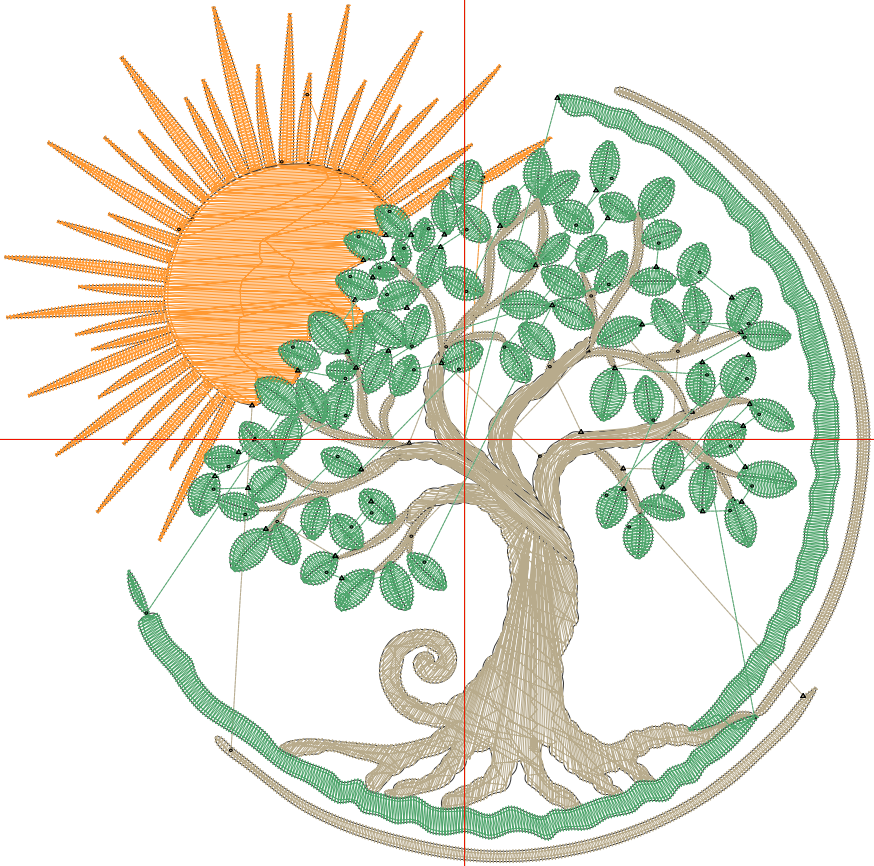
Title:

Stitches: 22,375
 Height: 4.47 in
 Width: 4.51 in
 Colors: 3
 Colorway: Colorway 1
 Zoom: 1:1

Machine format: Tajima
 Color changes: 2
 Stops: 3
 Trims: 60
 Appliqués: 0
 Left: 60.8 mm
 Right: 53.7 mm
 Up: 57.5 mm
 Down: 56.0 mm
 EndX: 0.00 in
 EndY: 0.00 in
 Area: 20.13 in²
 Max stitch: 7.9 mm
 Min stitch: 0.0 mm
 Max jump: 7.0 mm
 Total thread: 312.13ft
 Total bobbin: 97.38ft

Stop Sequence:

#	N#	Color	St.	Code	Name	Chart
1.	12		4,717	12	Orange	Default
2.	3		8,443		R184 G171 B140	
3.	2		9,213		R80 G166 B109	



Production Worksheet

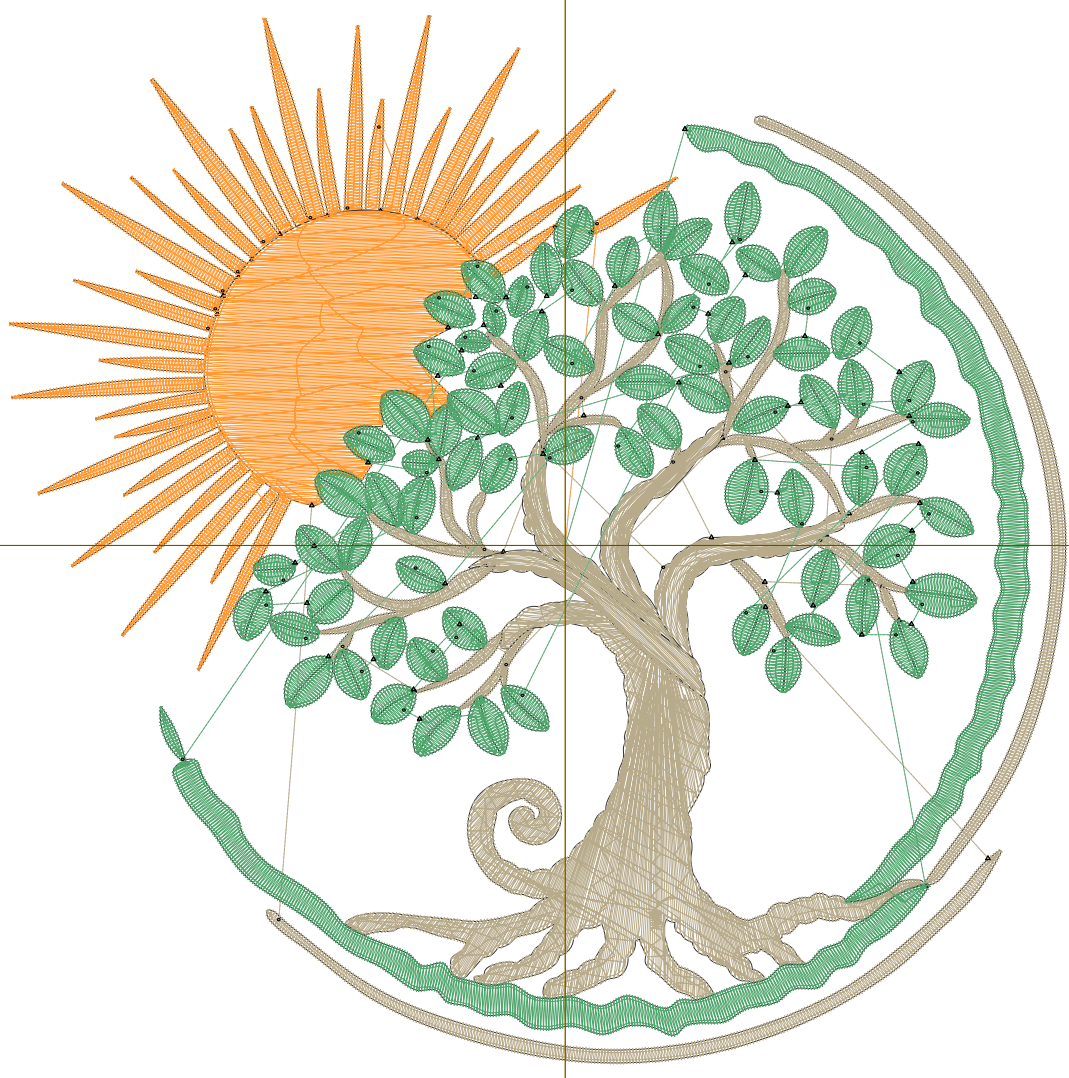
Wilcom EmbroideryStudio - Designing



Design: **5**

Title:

Stitches: 27,925
Height: 5.46 in
Width: 5.51 in
Colors: 3
Colorway: Colorway 1
Zoom: 1:1



Production Worksheet

Wilcom EmbroideryStudio - Designing



Design: **5**

Title:

Stitches: 27,925
 Height: 5.46 in
 Width: 5.51 in
 Colors: 3
 Colorway: Colorway 1
 Zoom: 1:1

Machine format: Tajima
 Color changes: 2
 Stops: 3
 Trims: 72
 Appliqués: 0
 Left: 73.5 mm
 Right: 66.4 mm
 Up: 70.1 mm
 Down: 68.6 mm
 EndX: 0.00 in
 EndY: 0.00 in
 Area 30.06 in²
 Max stitch: 9.2 mm
 Min stitch: 0.0 mm
 Max jump: 6.9 mm
 Total thread: 416.59ft
 Total bobbin: 137.70ft

Stop Sequence:

#	N#	Color	St.	Code	Name	Chart
1.	12		5,992	12	Orange	Default
2.	3		10,924		R184 G171 B140	
3.	2		11,007		R80 G166 B109	

Production Worksheet

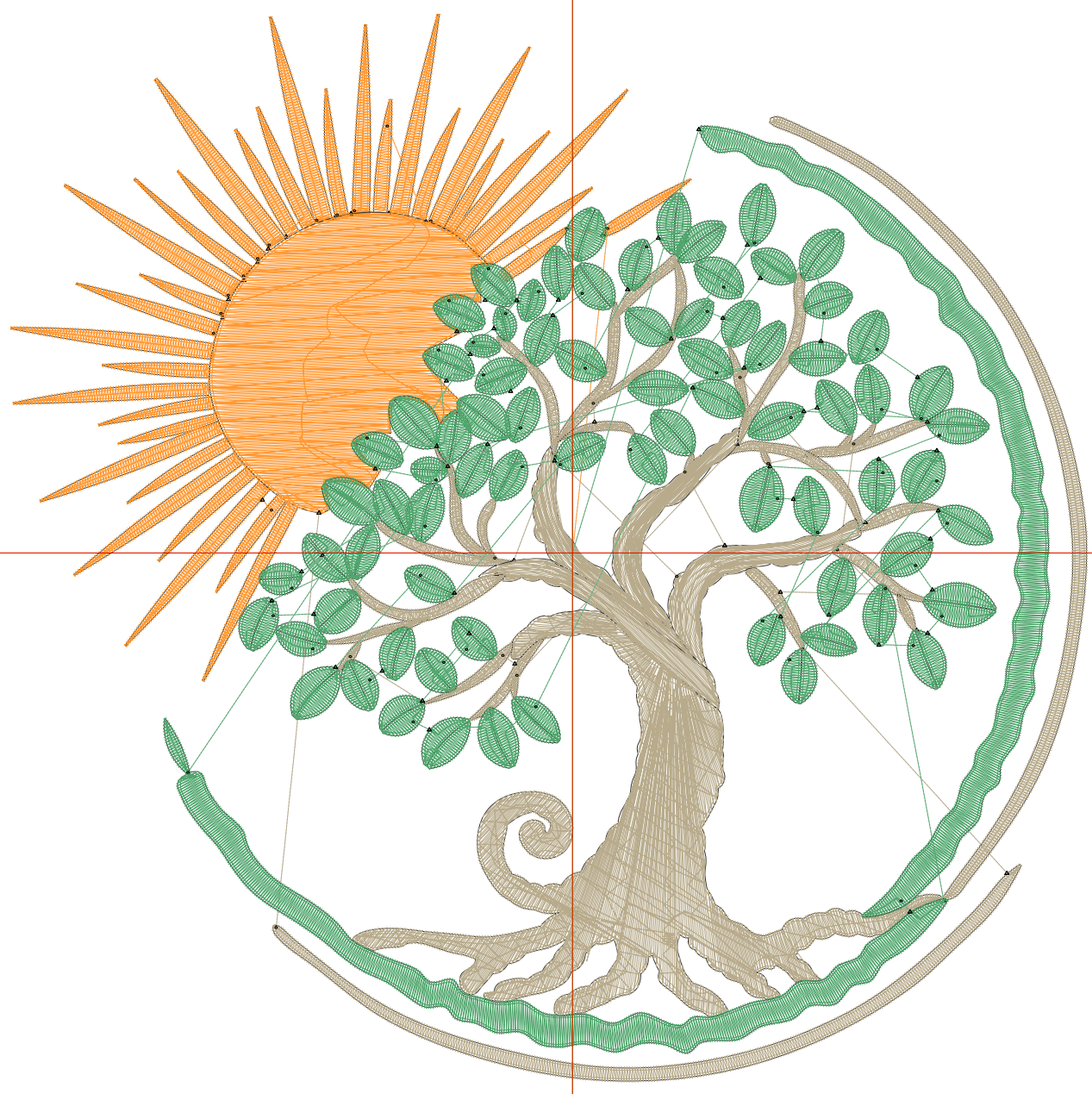
Wilcom EmbroideryStudio - Designing



Design: **6**

Title:

Stitches: 33,416
Height: 6.45 in
Width: 6.51 in
Colors: 3
Colorway: Colorway 1
Zoom: 1:1



Production Worksheet

Wilcom EmbroideryStudio - Designing



Design: **6**

Title:

Stitches: 33,416
 Height: 6.45 in
 Width: 6.51 in
 Colors: 3
 Colorway: Colorway 1
 Zoom: 1:1

Machine format: Tajima
 Color changes: 2
 Stops: 3
 Trims: 79
 Appliqués: 0
 Left: 86.2 mm
 Right: 79.1 mm
 Up: 82.7 mm
 Down: 81.2 mm
 EndX: 0.00 in
 EndY: 0.00 in
 Area 41.97 in²
 Max stitch: 8.8 mm
 Min stitch: 0.0 mm
 Max jump: 7.0 mm
 Total thread: 531.84ft
 Total bobbin: 184.65ft

Stop Sequence:

#	N#	Color	St.	Code	Name	Chart
1.	12		7,376	12	Orange	Default
2.	3		13,222		R184 G171 B140	
3.	2		12,816		R80 G166 B109	

Production Worksheet

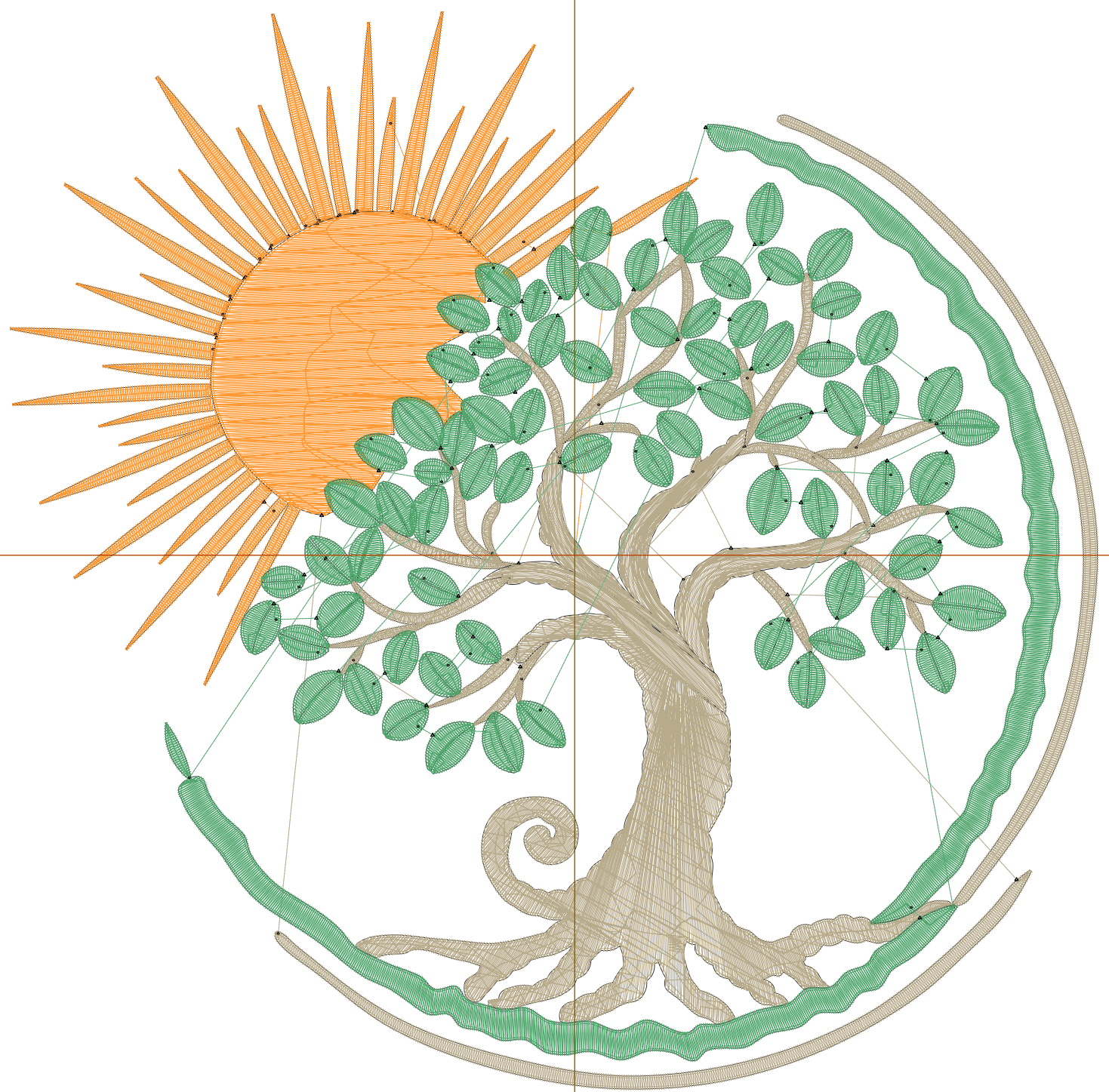
Wilcom EmbroideryStudio - Designing



Design: **7**

Title:

Stitches: 39,174
Height: 7.44 in
Width: 7.51 in
Colors: 3
Colorway: Colorway 1
Zoom: 1:1



Production Worksheet

Wilcom EmbroideryStudio - Designing



Design: **7**

Title:

Stitches: 39,174
 Height: 7.44 in
 Width: 7.51 in
 Colors: 3
 Colorway: Colorway 1
 Zoom: 1:1

Machine format: Tajima
 Color changes: 2
 Stops: 3
 Trims: 83
 Appliqués: 0
 Left: 98.9 mm
 Right: 91.8 mm
 Up: 95.3 mm
 Down: 93.8 mm
 EndX: 0.00 in
 EndY: 0.00 in
 Area 55.86 in²
 Max stitch: 9.7 mm
 Min stitch: 0.0 mm
 Max jump: 6.9 mm
 Total thread: 661.89ft
 Total bobbin: 239.32ft

Stop Sequence:

#	N#	Color	St.	Code	Name	Chart
1.	12		8,857	12	Orange	Default
2.	3		15,673		R184 G171 B140	
3.	2		14,642		R80 G166 B109	