

Production Worksheet

Wilcom EmbroideryStudio - Designing



Design: **4**

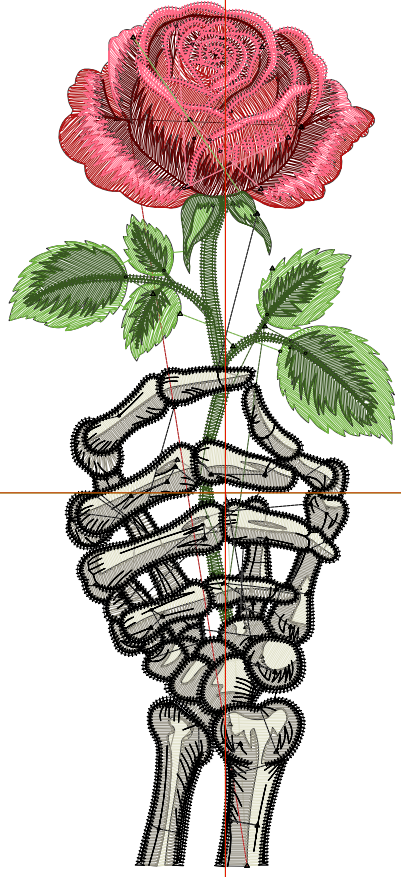
Title:

Stitches: 23,525
Height: 4.51 in
Width: 2.00 in
Colors: 8
Colorway: Colorway 1
Zoom: 1:1

Machine format: Tajima
Color changes: 7
Stops: 8
Trims: 106
Appliqués: 0
Left: 28.5 mm
Right: 22.3 mm
Up: 65.0 mm
Down: 49.5 mm
EndX: 0.00 in
EndY: 0.00 in
Area 9.02 in²
Max stitch: 6.9 mm
Min stitch: 0.0 mm
Max jump: 6.9 mm
Total thread: 264.98ft
Total bobbin: 63.99ft

Stop Sequence:

#	N#	Color	St.	Code	Name	Chart
1.	7		2,465		R224 G224 B199	
2.	4		3,967		R148 G144 B130	
3.	1		2,255		R179 G21 B21	
4.	5		1,960		R89 G0 B0	
5.	6		2,720		R255 G106 B134	
6.	3		1,978		R113 G179 B63	
7.	2		2,182		R55 G87 B31	
8.	8		5,996	8	Black	Default



Production Worksheet

Wilcom EmbroideryStudio - Designing



Design: **5**

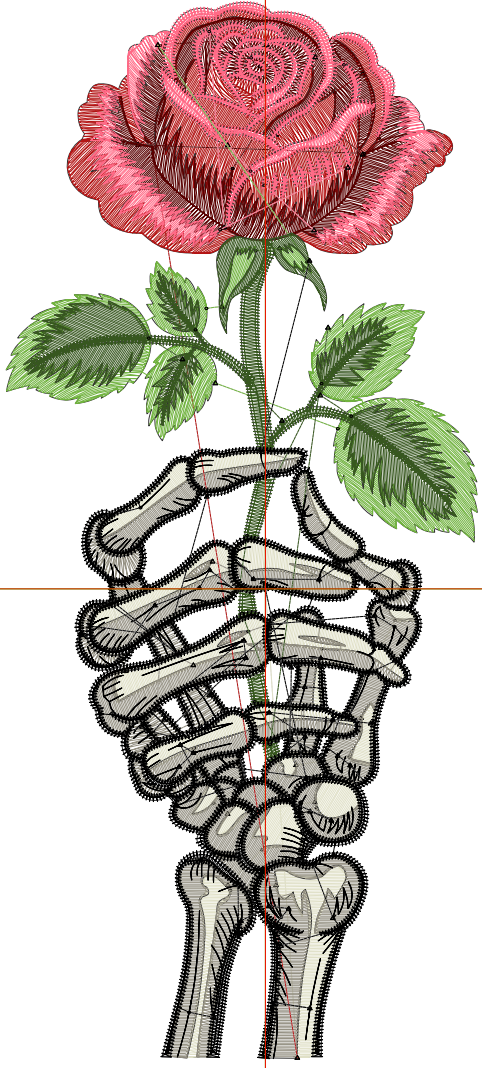
Title:

Stitches: 29,588
 Height: 5.51 in
 Width: 2.45 in
 Colors: 8
 Colorway: Colorway 1
 Zoom: 1:1

Machine format: Tajima
 Color changes: 7
 Stops: 8
 Trims: 116
 Appliqués: 0
 Left: 34.3 mm
 Right: 28.0 mm
 Up: 77.7 mm
 Down: 62.2 mm
 EndX: 0.00 in
 EndY: 0.00 in
 Area: 13.50 in²
 Max stitch: 8.0 mm
 Min stitch: 0.0 mm
 Max jump: 6.9 mm
 Total thread: 347.24ft
 Total bobbin: 89.17ft

Stop Sequence:

#	N#	Color	St.	Code	Name	Chart
1.	7		3,232		R224 G224 B199	
2.	4		5,241		R148 G144 B130	
3.	1		2,958		R179 G21 B21	
4.	5		2,532		R89 G0 B0	
5.	6		3,301		R255 G106 B134	
6.	3		2,518		R113 G179 B63	
7.	2		2,753		R55 G87 B31	
8.	8		7,051	8	Black	Default



Production Worksheet

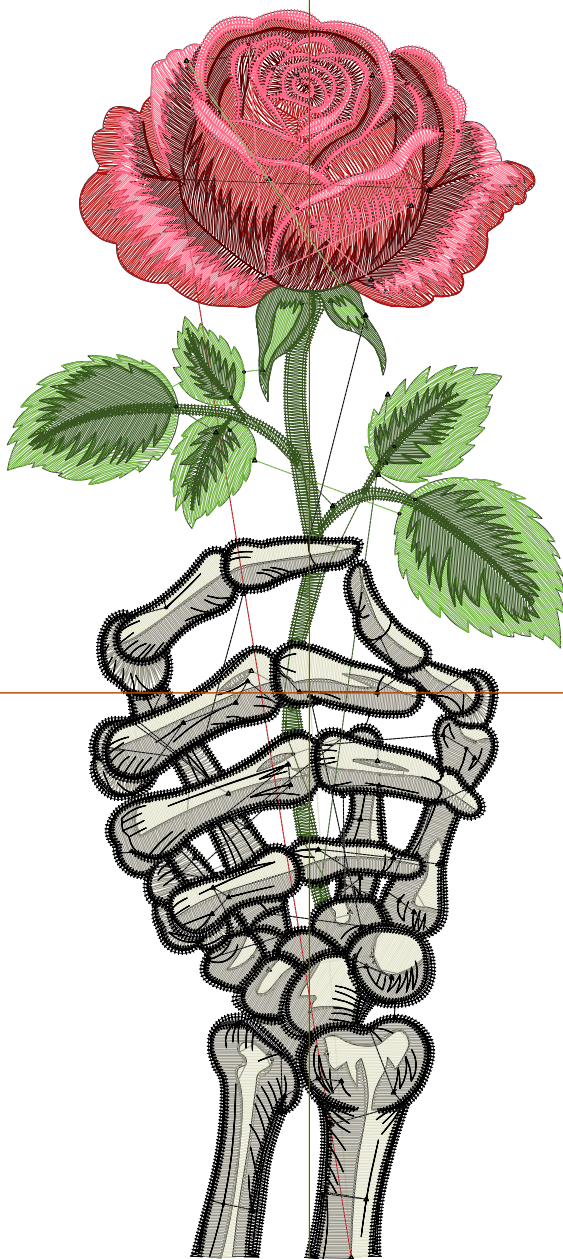
Wilcom EmbroideryStudio - Designing



Design: **6**

Title:

Stitches: 35,753
 Height: 6.51 in
 Width: 2.90 in
 Colors: 8
 Colorway: Colorway 1
 Zoom: 1:1



Machine format: Tajima
 Color changes: 7
 Stops: 8
 Trims: 126
 Appliqués: 0
 Left: 39.9 mm
 Right: 33.7 mm
 Up: 90.4 mm
 Down: 74.9 mm
 EndX: 0.00 in
 EndY: 0.00 in
 Area: 18.84 in²
 Max stitch: 9.4 mm
 Min stitch: 0.0 mm
 Max jump: 6.8 mm
 Total thread: 435.56ft
 Total bobbin: 117.53ft

Stop Sequence:

#	N#	Color	St.	Code	Name	Chart
1.	7		4,014		R224 G224 B199	
2.	4		6,442		R148 G144 B130	
3.	1		3,537		R179 G21 B21	
4.	5		3,187		R89 G0 B0	
5.	6		3,952		R255 G106 B134	
6.	3		3,186		R113 G179 B63	
7.	2		3,343		R55 G87 B31	
8.	8		8,090	8	Black	Default

Production Worksheet

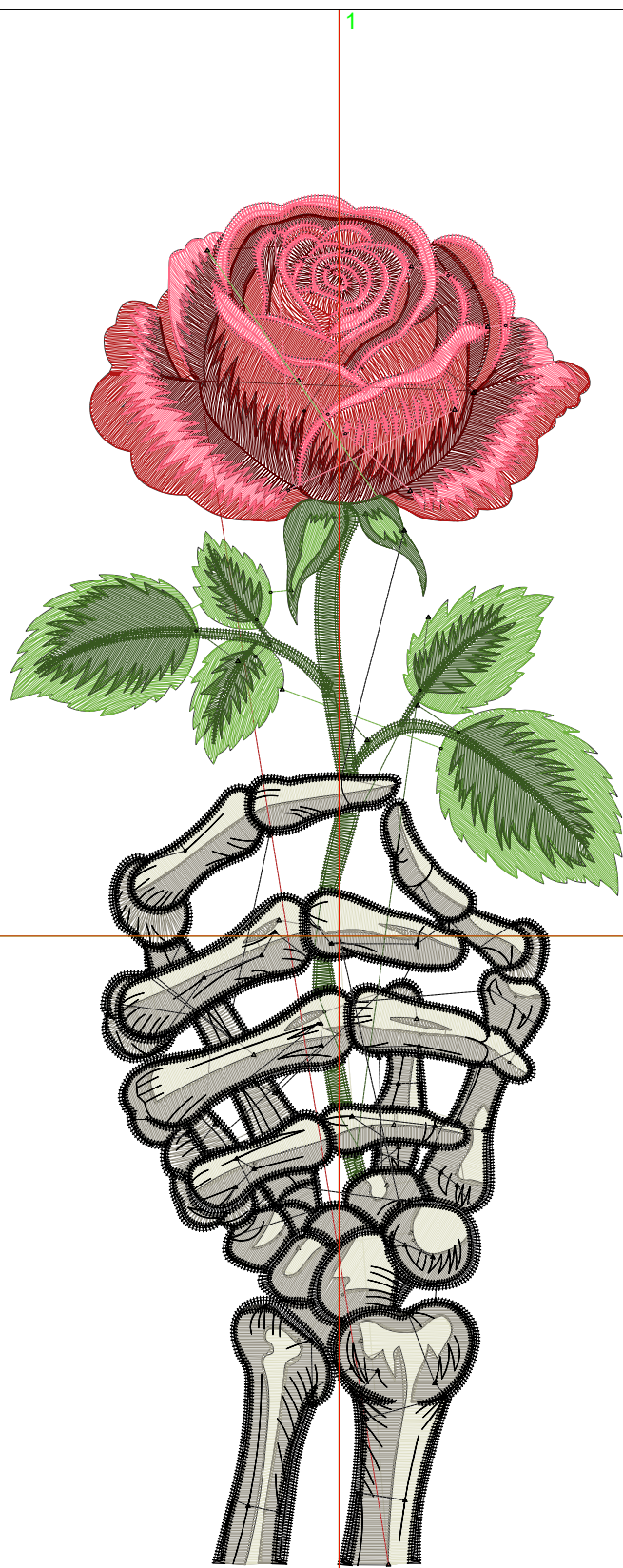
Wilcom EmbroideryStudio - Designing



Design: **7**

Title:

Stitches: 42,641
 Height: 7.51 in
 Width: 3.34 in
 Colors: 8
 Colorway: Colorway 1
 Zoom: 1:1



Machine format: Tajima
 Color changes: 7
 Stops: 8
 Trims: 132
 Appliqués: 0
 Left: 45.6 mm
 Right: 39.3 mm
 Up: 103.1 mm
 Down: 87.6 mm
 EndX: 0.00 in
 EndY: 0.00 in
 Area: 25.07 in²
 Max stitch: 10.9 mm
 Min stitch: 0.0 mm
 Max jump: 6.9 mm
 Total thread: 538.36ft
 Total bobbin: 151.67ft

Stop Sequence:

#	N#	Color	St.	Code	Name	Chart
1.	7		4,858	R224	G224 B199	
2.	4		7,794	R148	G144 B130	
3.	1		4,466	R179	G21 B21	
4.	5		3,937	R89	G0 B0	
5.	6		4,612	R255	G106 B134	
6.	3		3,900	R113	G179 B63	
7.	2		3,964	R55	G87 B31	
8.	8		9,108	8	Black	Default

Production Worksheet

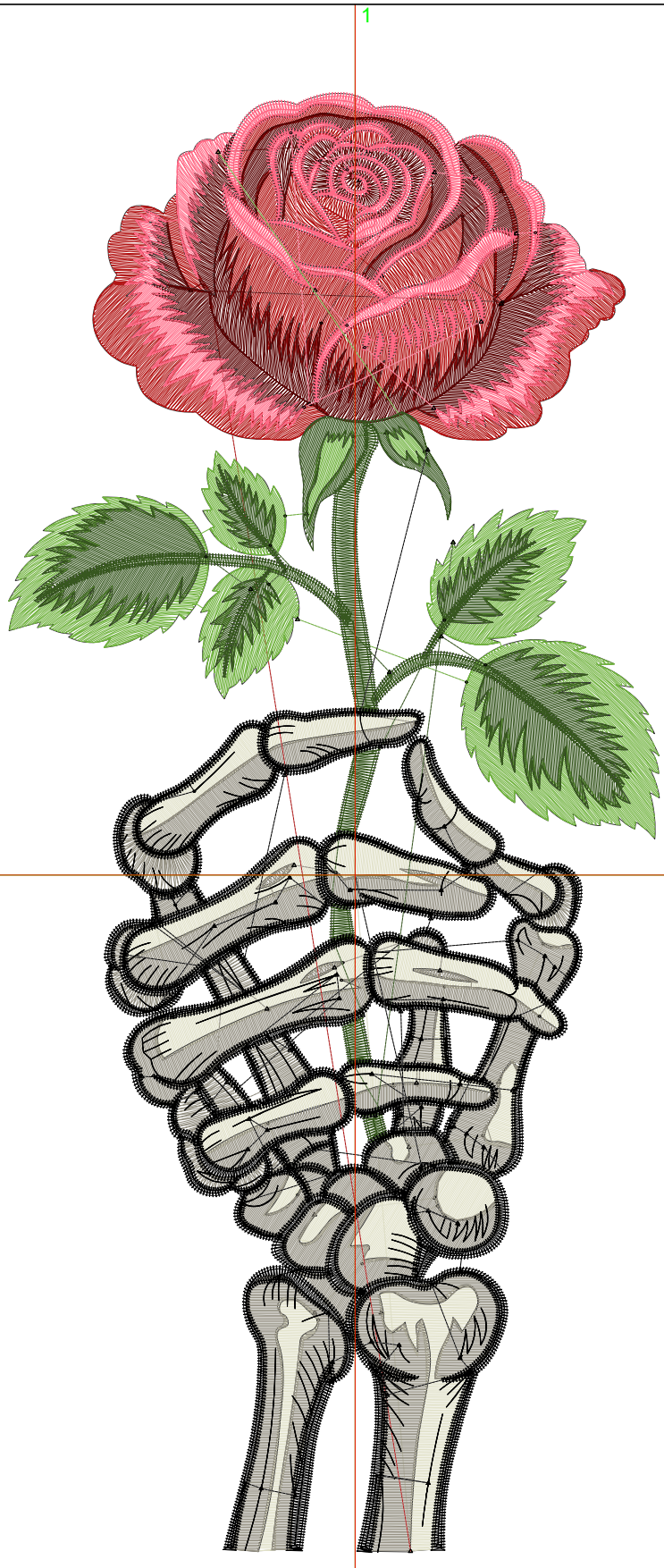
Wilcom EmbroideryStudio - Designing



Design: **8**

Title:

Stitches: 49,683
Height: 8.51 in
Width: 3.79 in
Colors: 8
Colorway: Colorway 1
Zoom: 1:1



Machine format: Tajima
Color changes: 7
Stops: 8
Trims: 139
Appliqués: 0
Left: 51.3 mm
Right: 45.0 mm
Up: 115.8 mm
Down: 100.3 mm
EndX: 0.00 in
EndY: 0.00 in
Area: 32.24 in²
Max stitch: 8.0 mm
Min stitch: 0.0 mm
Max jump: 6.9 mm
Total thread: 648.13ft
Total bobbin: 189.33ft

Stop Sequence:

#	N#	Color	St.	Code	Name	Chart
1.	7		5,683		R224 G224 B199	
2.	4		9,139		R148 G144 B130	
3.	1		5,333		R179 G21 B21	
4.	5		4,717		R89 G0 B0	
5.	6		5,300		R255 G106 B134	
6.	3		4,664		R113 G179 B63	
7.	2		4,676		R55 G87 B31	
8.	8		10,169	8	Black	Default