

Production Worksheet

Wilcom EmbroideryStudio - Designing



Design: **3**

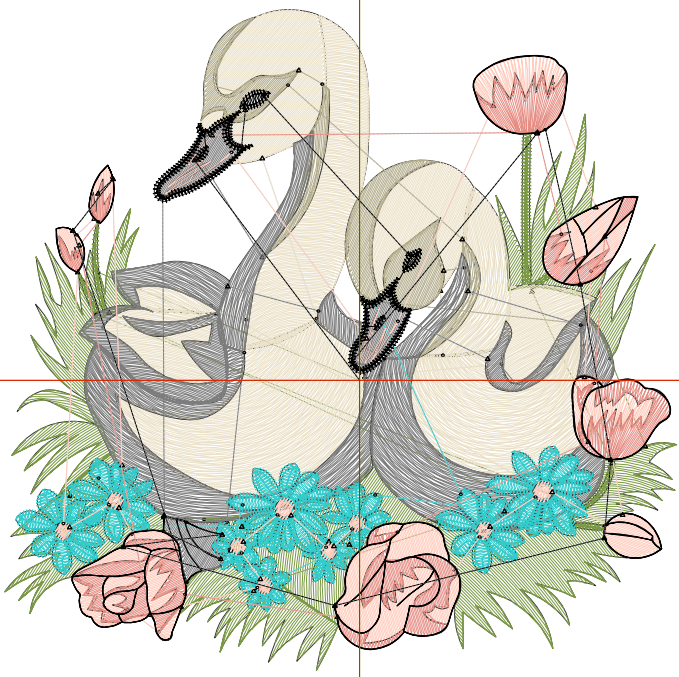
Title:

Stitches: 20,959
 Height: 3.44 in
 Width: 3.50 in
 Colors: 8
 Colorway: Colorway 1
 Zoom: 1:1

Machine format: Tajima
 Color changes: 7
 Stops: 8
 Trims: 72
 Appliqués: 0
 Left: 46.9 mm
 Right: 42.0 mm
 Up: 49.0 mm
 Down: 38.4 mm
 EndX: 0.00 in
 EndY: 0.00 in
 Area 12.04 in²
 Max stitch: 7.0 mm
 Min stitch: 0.0 mm
 Max jump: 7.0 mm
 Total thread: 284.30ft
 Total bobbin: 85.42ft

Stop Sequence:

#	N#	Color	St.	Code	Name	Chart
1.	7		3,916	R123 G153 B68		
2.	6		4,445	R235 G225 B200		
3.	4		769	R179 G173 B141		
4.	2		3,475	R125 G125 B125		
5.	5		3,128	5 Aqua		Default
6.	1		2,161	R255 G204 B189		
7.	3		1,562	R230 G142 B132		
8.	28		1,501	8 Black		Default



Production Worksheet

Wilcom EmbroideryStudio - Designing



Design: **4**

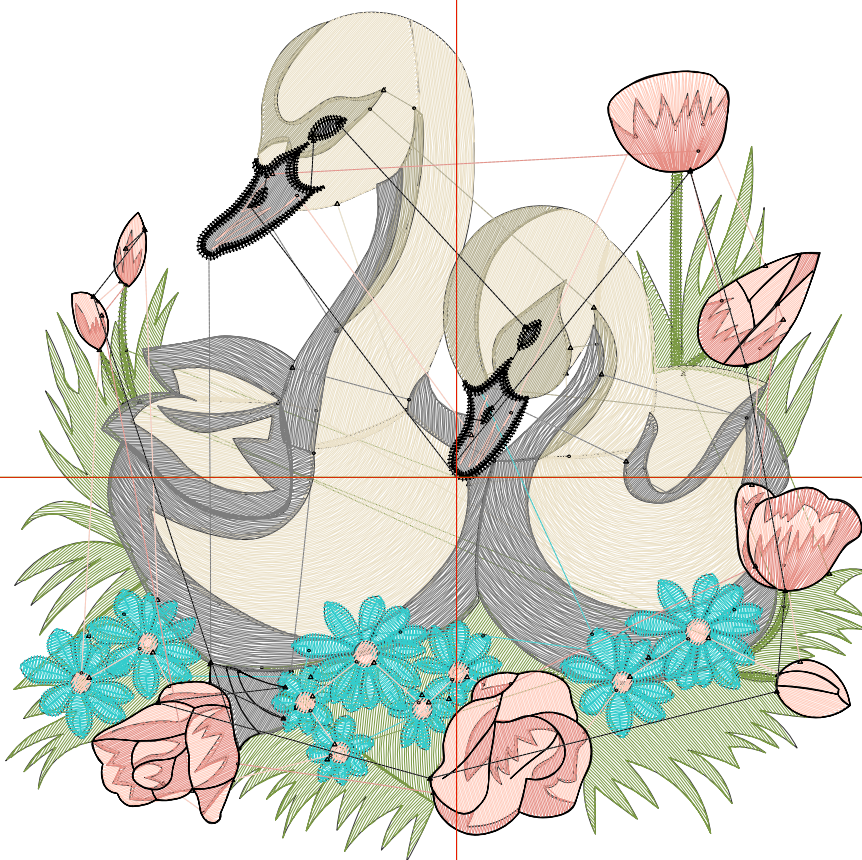
Title:

Stitches: 28,354
Height: 4.40 in
Width: 4.48 in
Colors: 8
Colorway: Colorway 1
Zoom: 1:1

Machine format: Tajima
Color changes: 7
Stops: 8
Trims: 77
Appliqués: 0
Left: 59.5 mm
Right: 54.4 mm
Up: 61.5 mm
Down: 50.2 mm
EndX: 0.00 in
EndY: 0.00 in
Area: 19.71 in²
Max stitch: 7.0 mm
Min stitch: 0.0 mm
Max jump: 7.0 mm
Total thread: 414.12ft
Total bobbin: 133.60ft

Stop Sequence:

#	N#	Color	St.	Code	Name	Chart
1.	7		5,379	R123 G153 B68		
2.	6		6,058	R235 G225 B200		
3.	4		1,095	R179 G173 B141		
4.	2		5,028	R125 G125 B125		
5.	5		3,905	5 Aqua		Default
6.	1		2,921	R255 G204 B189		
7.	3		2,178	R230 G142 B132		
8.	28		1,788	8 Black		Default



Production Worksheet

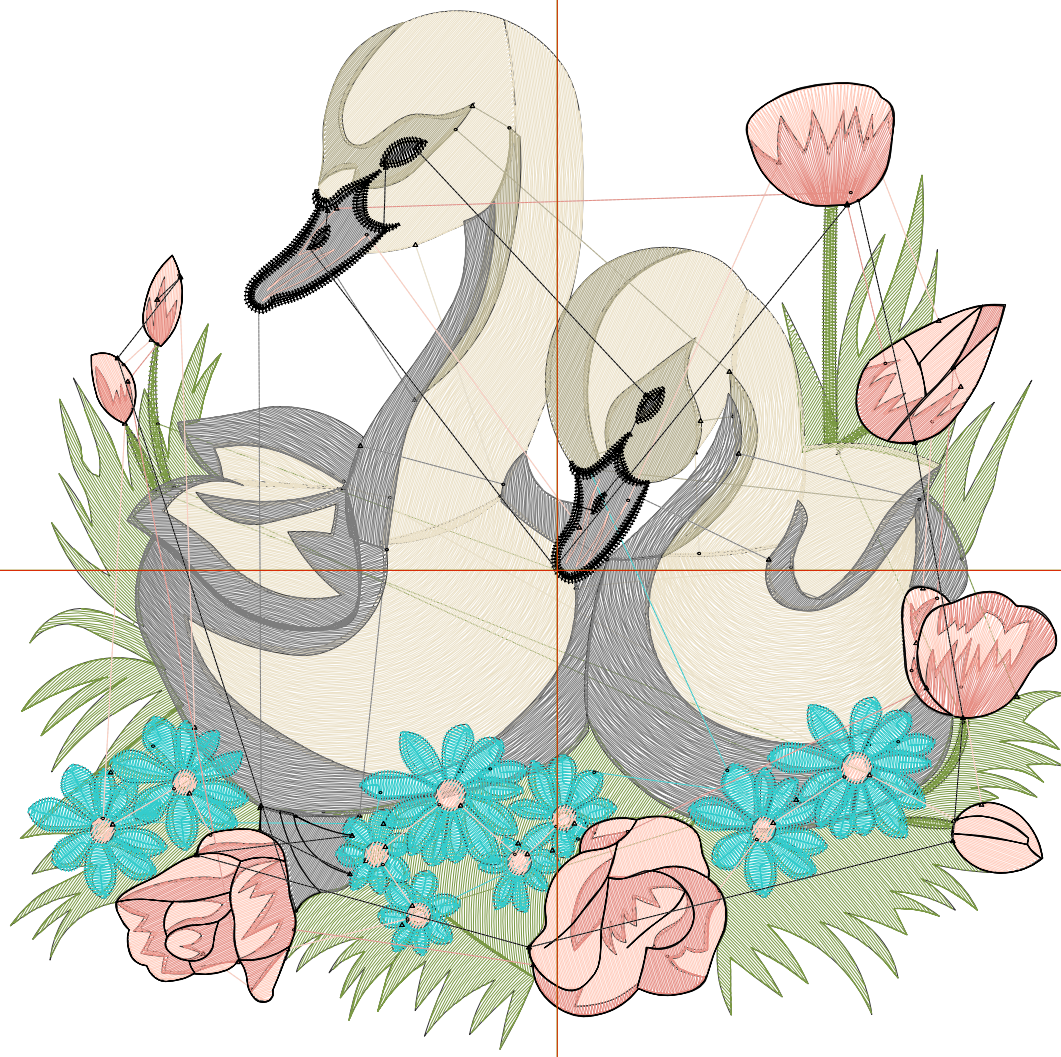
Wilcom EmbroideryStudio - Designing



Design: **5**

Title:

Stitches: 37,380
Height: 5.41 in
Width: 5.50 in
Colors: 8
Colorway: Colorway 1
Zoom: 1:1



Production Worksheet

Wilcom EmbroideryStudio - Designing



Design: **5**

Title:

Stitches: 37,380
 Height: 5.41 in
 Width: 5.50 in
 Colors: 8
 Colorway: Colorway 1
 Zoom: 1:1

Machine format: Tajima
 Color changes: 7
 Stops: 8
 Trims: 81
 Appliqués: 0
 Left: 72.3 mm
 Right: 67.4 mm
 Up: 74.0 mm
 Down: 63.3 mm
 EndX: 0.00 in
 EndY: 0.00 in
 Area 29.74 in²
 Max stitch: 7.0 mm
 Min stitch: 0.0 mm
 Max jump: 7.0 mm
 Total thread: 575.01ft
 Total bobbin: 193.84ft

Stop Sequence:

#	N#	Color	St.	Code	Name	Chart
1.	7		7,184		R123 G153 B68	
2.	6		8,495		R235 G225 B200	
3.	4		1,489		R179 G173 B141	
4.	2		6,845		R125 G125 B125	
5.	5		4,666	5	Aqua	Default
6.	1		3,791		R255 G204 B189	
7.	3		2,845		R230 G142 B132	
8.	28		2,063	8	Black	Default

Production Worksheet

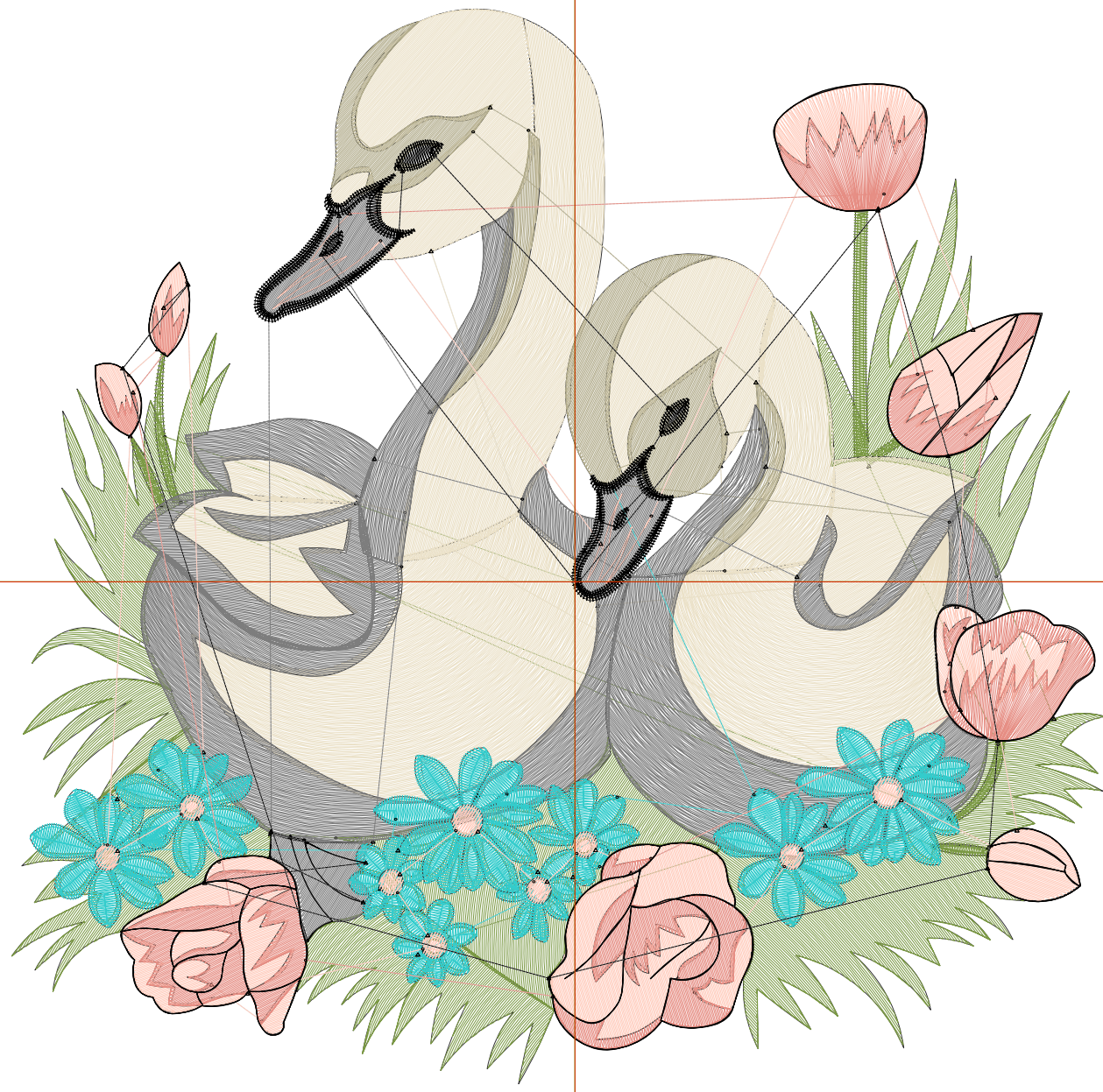
Wilcom EmbroideryStudio - Designing



Design: **6**

Title:

Stitches: 47,317
Height: 6.37 in
Width: 6.50 in
Colors: 8
Colorway: Colorway 1
Zoom: 1:1



1

2

1

2

Production Worksheet

Wilcom EmbroideryStudio - Designing



Design: **6**

Title:

Stitches: 47,317
 Height: 6.37 in
 Width: 6.50 in
 Colors: 8
 Colorway: Colorway 1
 Zoom: 1:1

Machine format: Tajima
 Color changes: 7
 Stops: 8
 Trims: 83
 Appliqués: 0
 Left: 85.0 mm
 Right: 80.1 mm
 Up: 86.5 mm
 Down: 75.3 mm
 EndX: 0.00 in
 EndY: 0.00 in
 Area 41.42 in²
 Max stitch: 7.0 mm
 Min stitch: 0.0 mm
 Max jump: 7.0 mm
 Total thread: 759.09ft
 Total bobbin: 264.29ft

Stop Sequence:

#	N#	Color	St.	Code	Name	Chart
1.	7		8,924		R123 G153 B68	
2.	6		11,433		R235 G225 B200	
3.	4		1,921		R179 G173 B141	
4.	2		9,000		R125 G125 B125	
5.	5		5,462	5	Aqua	Default
6.	1		4,645		R255 G204 B189	
7.	3		3,598		R230 G142 B132	
8.	28		2,332	8	Black	Default

Production Worksheet

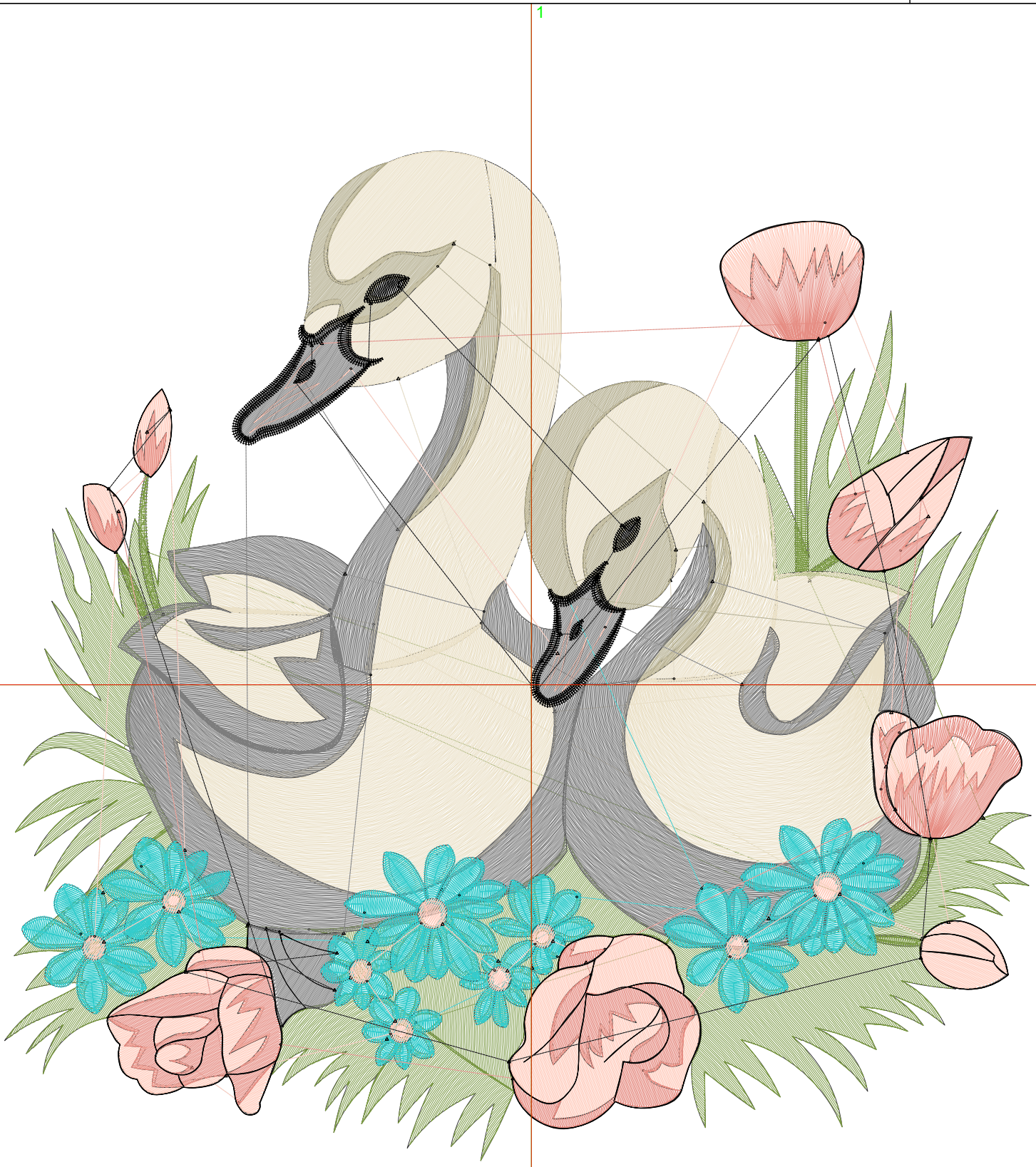
Wilcom EmbroideryStudio - Designing



Design: **7**

Title:

Stitches: 58,375
Height: 7.37 in
Width: 7.46 in
Colors: 8
Colorway: Colorway 1
Zoom: 1:1



Production Worksheet

Wilcom EmbroideryStudio - Designing



Design: **7**

Title:

Stitches: 58,375
 Height: 7.37 in
 Width: 7.46 in
 Colors: 8
 Colorway: Colorway 1
 Zoom: 1:1

Machine format: Tajima
 Color changes: 7
 Stops: 8
 Trims: 84
 Appliqués: 0
 Left: 97.3 mm
 Right: 92.2 mm
 Up: 99.0 mm
 Down: 88.3 mm
 EndX: 0.00 in
 EndY: 0.00 in
 Area 55.02 in²
 Max stitch: 7.0 mm
 Min stitch: 0.0 mm
 Max jump: 7.0 mm
 Total thread: 969.62ft
 Total bobbin: 346.05ft

Stop Sequence:

#	N#	Color	St.	Code	Name	Chart
1.	7		10,997		R123 G153 B68	
2.	6		14,727		R235 G225 B200	
3.	4		2,374		R179 G173 B141	
4.	2		11,345		R125 G125 B125	
5.	5		6,285	5	Aqua	Default
6.	1		5,650		R255 G204 B189	
7.	3		4,381		R230 G142 B132	
8.	28		2,614	8	Black	Default

Production Worksheet

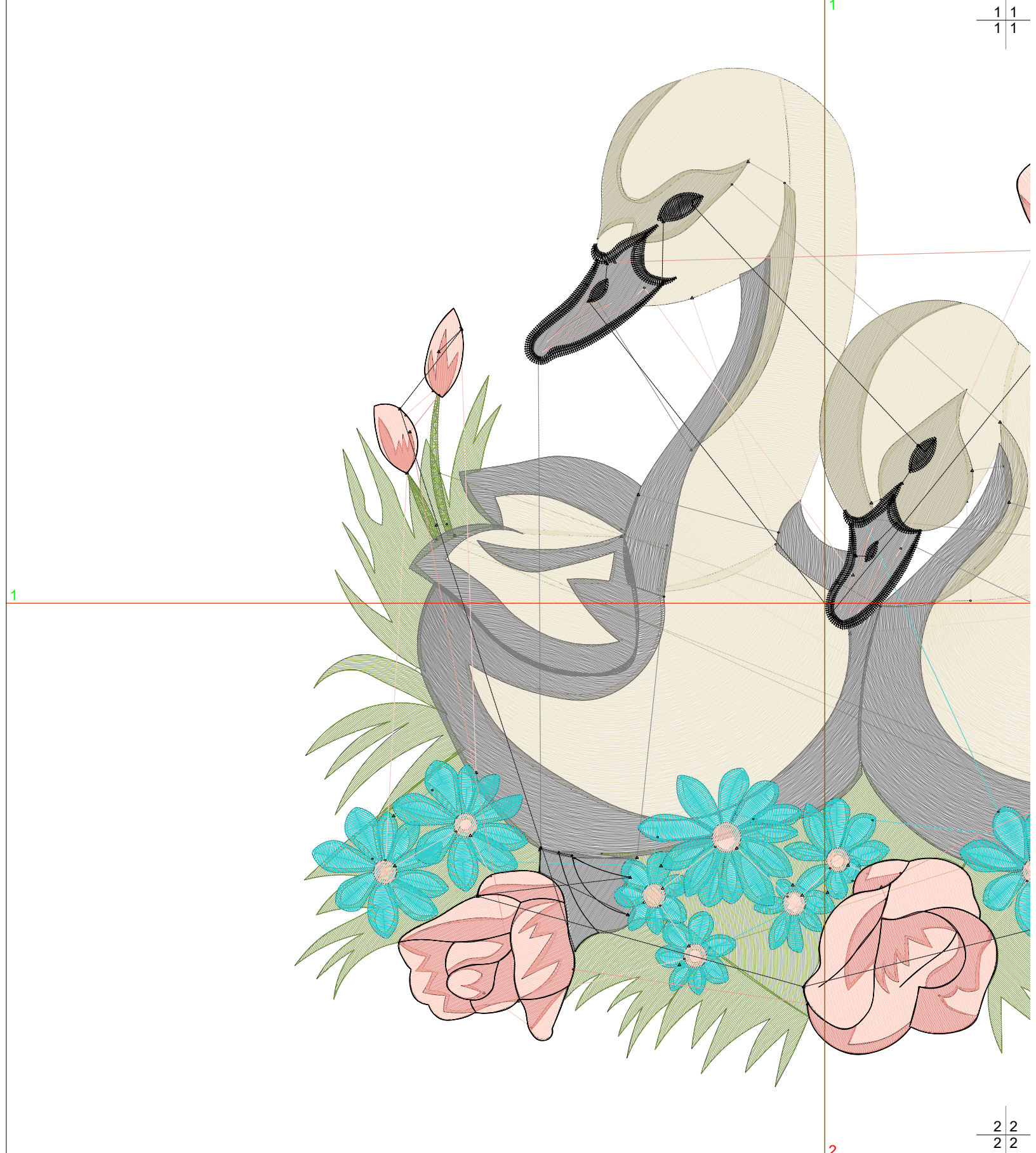
Wilcom EmbroideryStudio - Designing



Design: **8**

Title:

Stitches: 73,499
Height: 8.35 in
Width: 8.47 in
Colors: 8
Colorway: Colorway 1
Zoom: 1:1



Production Worksheet

Wilcom EmbroideryStudio - Designing

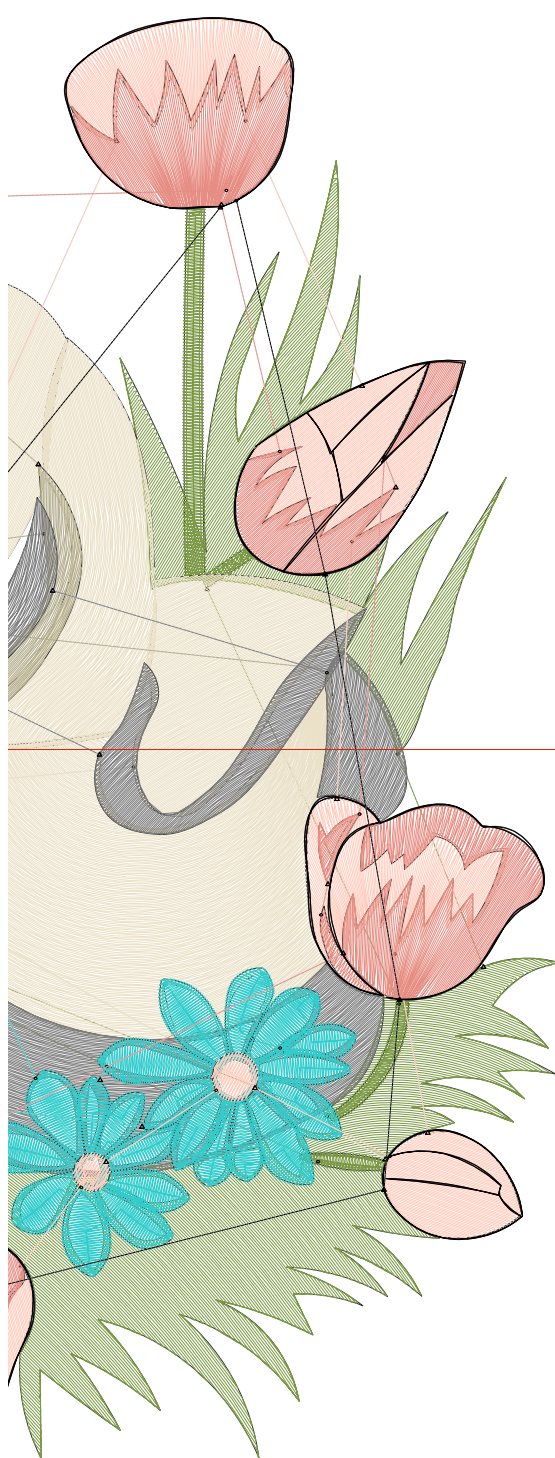


Design: **8**

Title:

Stitches: 73,499
 Height: 8.35 in
 Width: 8.47 in
 Colors: 8
 Colorway: Colorway 1
 Zoom: 1:1

1 1
 1 1



Machine format: Tajima
 Color changes: 7
 Stops: 8
 Trims: 87
 Appliqués: 0
 Left: 110.2 mm
 Right: 105.0 mm
 Up: 111.5 mm
 Down: 100.5 mm
 EndX: 0.00 in
 EndY: 0.00 in
 Area: 70.70 in²
 Max stitch: 7.0 mm
 Min stitch: 0.0 mm
 Max jump: 7.0 mm
 Total thread: 1226.76ft
 Total bobbin: 439.62ft

Stop Sequence:

#	N#	Color	St.	Code	Name	Chart
1.	7		13,251		R123 G153 B68	
2.	6		21,404		R235 G225 B200	
3.	4		2,920		R179 G173 B141	
4.	2		13,933		R125 G125 B125	
5.	5		7,157	5	Aqua	Default
6.	1		6,707		R255 G204 B189	
7.	3		5,267		R230 G142 B132	
8.	28		2,858	8	Black	Default

2

2 2
 2 2