

Production Worksheet

Wilcom EmbroideryStudio - Designing



Design: **3**

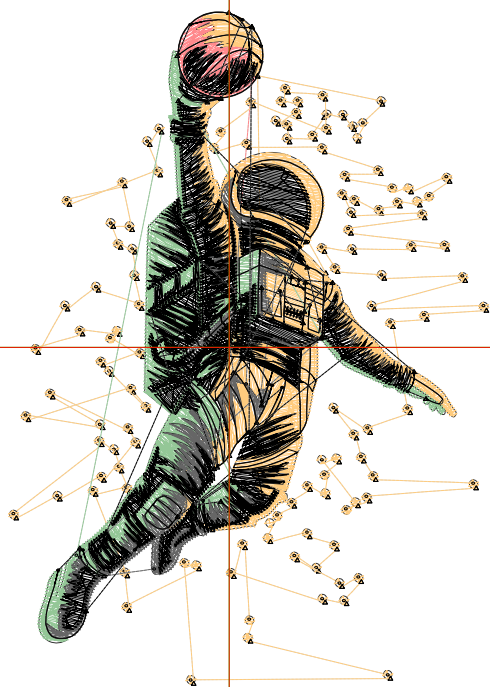
Title:

Stitches: 17,758
Height: 3.50 in
Width: 2.50 in
Colors: 5
Colorway: Colorway 1
Zoom: 1:1

Machine format: Tajima
Color changes: 4
Stops: 5
Trims: 188
Appliqués: 0
Left: 29.2 mm
Right: 34.4 mm
Up: 44.3 mm
Down: 44.5 mm
EndX: 0.00 in
EndY: 0.00 in
Area: 8.76 in²
Max stitch: 9.2 mm
Min stitch: 0.0 mm
Max jump: 7.0 mm
Total thread: 202.03ft
Total bobbin: 49.70ft

Stop Sequence:

#	N#	Color	St.	Code	Name	Chart
1.	1		475		R255 G137 B140	
2.	16		5,536	16	Sand	Default
3.	2		3,459		R148 G199 B151	
4.	18		1,856	18	Grey	Default
5.	8		6,430	8	Black	Default



Production Worksheet

Wilcom EmbroideryStudio - Designing



Design: **4**

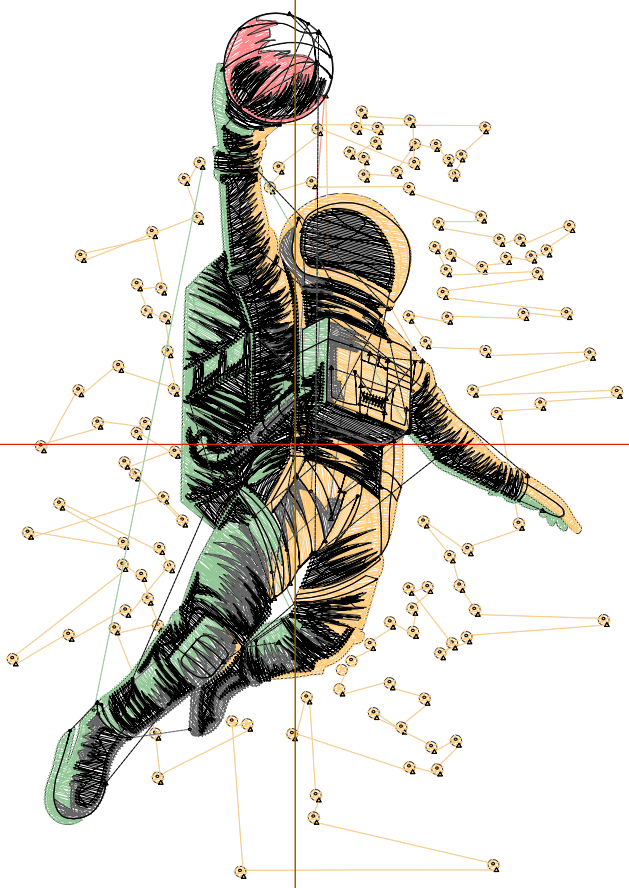
Title:

Stitches: 23,192
 Height: 4.50 in
 Width: 3.22 in
 Colors: 5
 Colorway: Colorway 1
 Zoom: 1:1

Machine format: Tajima
 Color changes: 4
 Stops: 5
 Trims: 205
 Appliqués: 0
 Left: 38.3 mm
 Right: 43.4 mm
 Up: 57.1 mm
 Down: 57.2 mm
 EndX: 0.00 in
 EndY: 0.00 in
 Area: 14.47 in²
 Max stitch: 11.9 mm
 Min stitch: 0.0 mm
 Max jump: 6.9 mm
 Total thread: 277.96ft
 Total bobbin: 73.57ft

Stop Sequence:

#	N#	Color	St.	Code	Name	Chart
1.	1		647		R255 G137 B140	
2.	16		7,145	16	Sand	Default
3.	2		4,603		R148 G199 B151	
4.	18		2,428	18	Grey	Default
5.	8		8,367	8	Black	Default



Production Worksheet

Wilcom EmbroideryStudio - Designing



Design: **5**

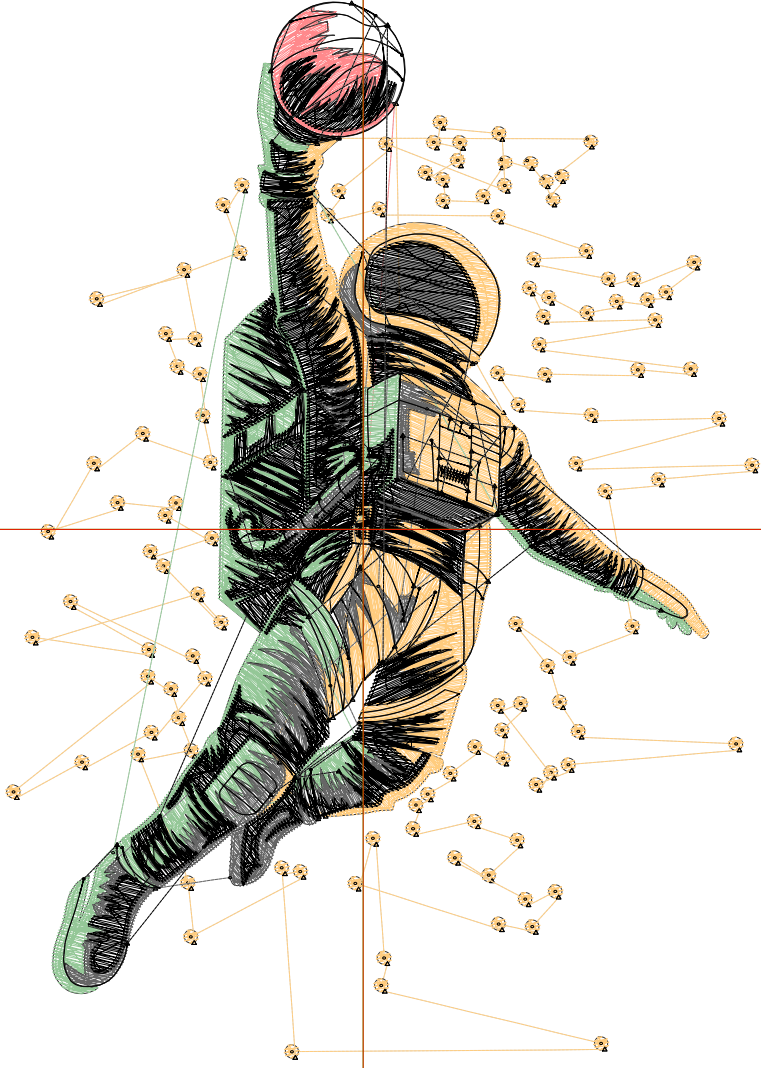
Title:

Stitches: 28,480
 Height: 5.50 in
 Width: 3.93 in
 Colors: 5
 Colorway: Colorway 1
 Zoom: 1:1

Machine format: Tajima
 Color changes: 4
 Stops: 5
 Trims: 214
 Appliqués: 0
 Left: 47.3 mm
 Right: 52.5 mm
 Up: 69.8 mm
 Down: 69.9 mm
 EndX: 0.00 in
 EndY: 0.00 in
 Area: 21.60 in²
 Max stitch: 6.9 mm
 Min stitch: 0.0 mm
 Max jump: 6.9 mm
 Total thread: 361.00ft
 Total bobbin: 102.21ft

Stop Sequence:

#	N#	Color	St.	Code	Name	Chart
1.	1		834		R255 G137 B140	
2.	16		8,532	16	Sand	Default
3.	2		5,724		R148 G199 B151	
4.	18		2,830	18	Grey	Default
5.	8		10,558	8	Black	Default



Production Worksheet

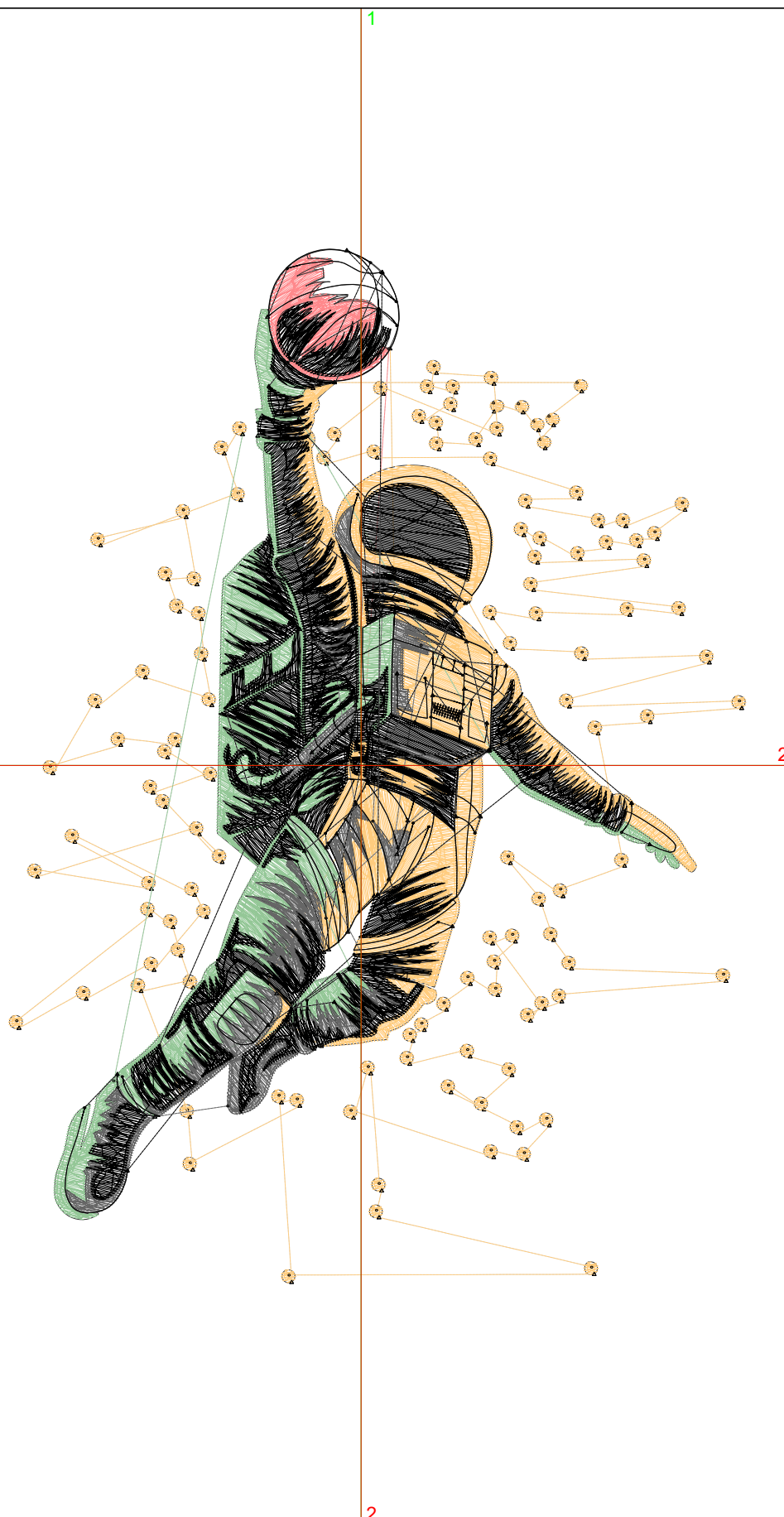
Wilcom EmbroideryStudio - Designing



Design: **6**

Title:

Stitches: 34,634
Height: 6.50 in
Width: 4.64 in
Colors: 5
Colorway: Colorway 1
Zoom: 1:1



Machine format: Tajima
Color changes: 4
Stops: 5
Trims: 217
Appliqués: 0
Left: 56.3 mm
Right: 61.5 mm
Up: 82.5 mm
Down: 82.6 mm
EndX: 0.00 in
EndY: 0.00 in
Area: 30.16 in²
Max stitch: 7.7 mm
Min stitch: 0.0 mm
Max jump: 7.0 mm
Total thread: 457.30ft
Total bobbin: 135.35ft

Stop Sequence:

#	N#	Color	St.	Code	Name	Chart
1.	1		1,020		R255 G137 B140	
2.	16		10,225	16	Sand	Default
3.	2		6,940		R148 G199 B151	
4.	18		3,754	18	Grey	Default
5.	8		12,693	8	Black	Default

Production Worksheet

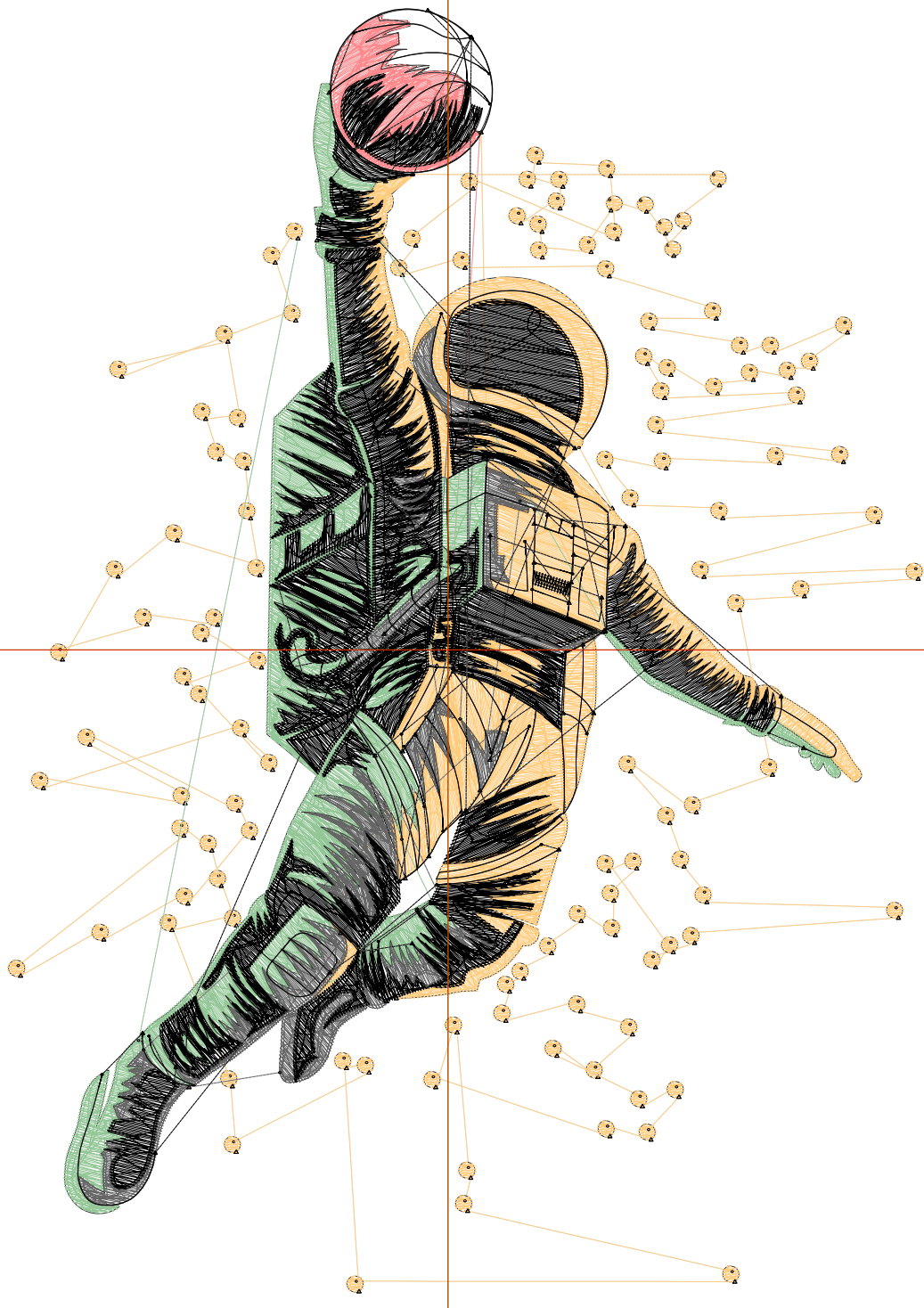
Wilcom EmbroideryStudio - Designing



Design: **7**

Title:

Stitches: 40,349
Height: 7.50 in
Width: 5.35 in
Colors: 5
Colorway: Colorway 1
Zoom: 1:1



Production Worksheet

Wilcom EmbroideryStudio - Designing



Design: **7**

Title:

Stitches: 40,349
 Height: 7.50 in
 Width: 5.35 in
 Colors: 5
 Colorway: Colorway 1
 Zoom: 1:1

Machine format: Tajima
 Color changes: 4
 Stops: 5
 Trims: 222
 Appliqués: 0
 Left: 65.4 mm
 Right: 70.6 mm
 Up: 95.2 mm
 Down: 95.3 mm
 EndX: 0.00 in
 EndY: 0.00 in
 Area 40.14 in²
 Max stitch: 8.9 mm
 Min stitch: 0.0 mm
 Max jump: 7.0 mm
 Total thread: 555.21ft
 Total bobbin: 171.15ft

Stop Sequence:

#	N#	Color	St.	Code	Name	Chart
1.	1		1,199		R255 G137 B140	
2.	16		11,662	16	Sand	Default
3.	2		8,282		R148 G199 B151	
4.	18		4,264	18	Grey	Default
5.	8		14,940	8	Black	Default