

# Production Worksheet

Wilcom EmbroideryStudio - Designing



Design: **3**

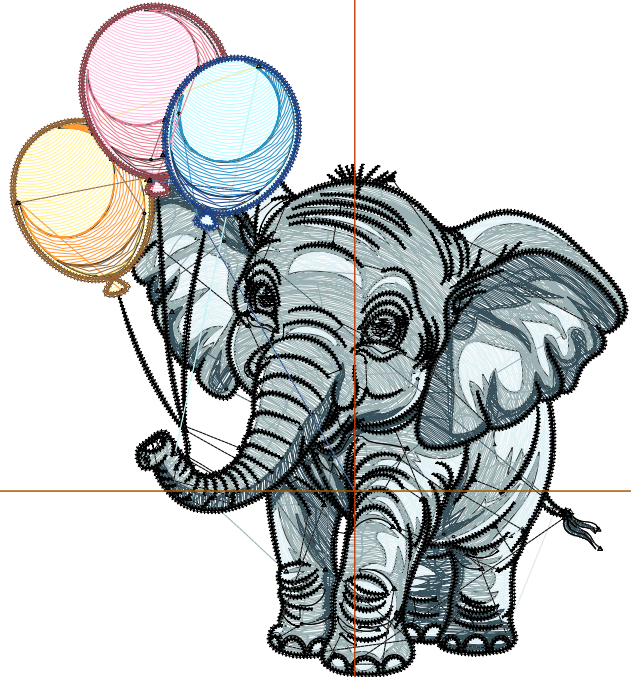
Title:

Stitches: 32,091  
 Height: 3.51 in  
 Width: 3.22 in  
 Colors: 13  
 Colorway: Colorway 1  
 Zoom: 1:1

Machine format: Tajima  
 Color changes: 12  
 Stops: 13  
 Trims: 126  
 Appliqués: 0  
 Left: 45.7 mm  
 Right: 36.2 mm  
 Up: 64.6 mm  
 Down: 24.6 mm  
 EndX: 0.00 in  
 EndY: 0.00 in  
 Area: 11.32 in<sup>2</sup>  
 Max stitch: 11.3 mm  
 Min stitch: 0.0 mm  
 Max jump: 7.0 mm  
 Total thread: 390.22ft  
 Total bobbin: 103.93ft

Stop Sequence:

#	N#	Color	St.	Code	Name	Chart
1.	2		4,856		R225 G241 B245	
2.	10		9,414		R155 G177 B179	
3.	7		3,932		R55 G82 B92	
4.	8		10,786	8	Black	Default
5.	1		425		R185 G253 B255	
6.	9		223		R40 G149 B204	
7.	5		447		R255 G243 B139	
8.	12		183	12	Orange	Default
9.	14		408	14	Brown	Default
10.	3		468		R255 G191 B227	
11.	4		133		R235 G123 B145	
12.	13		367		R148 G69 B75	
13.	11		447		R27 G66 B138	



# Production Worksheet

Wilcom EmbroideryStudio - Designing



Design: **4**

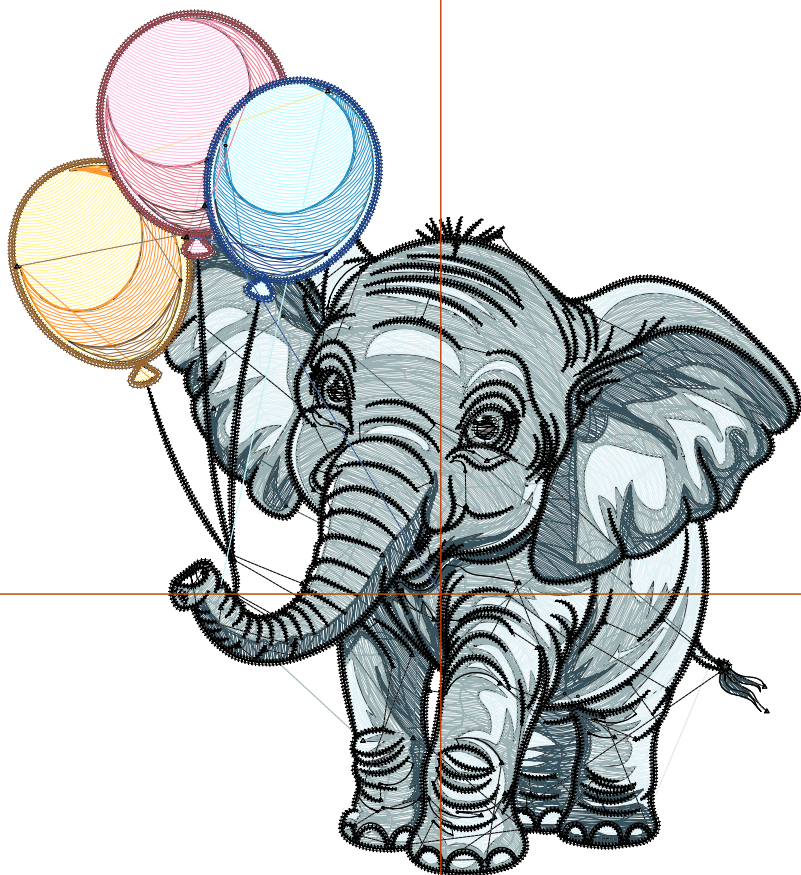
Title:

Stitches: 42,568  
 Height: 4.51 in  
 Width: 4.14 in  
 Colors: 13  
 Colorway: Colorway 1  
 Zoom: 1:1

Machine format: Tajima  
 Color changes: 12  
 Stops: 13  
 Trims: 145  
 Appliqués: 0  
 Left: 57.3 mm  
 Right: 47.8 mm  
 Up: 77.3 mm  
 Down: 37.3 mm  
 EndX: 0.00 in  
 EndY: 0.00 in  
 Area: 18.68 in<sup>2</sup>  
 Max stitch: 9.8 mm  
 Min stitch: 0.0 mm  
 Max jump: 6.9 mm  
 Total thread: 542.57ft  
 Total bobbin: 153.47ft

Stop Sequence:

#	N#	Color	St.	Code	Name	Chart
1.	2		6,529		R225 G241 B245	
2.	10		12,895		R155 G177 B179	
3.	7		5,494		R55 G82 B92	
4.	8		13,447	8	Black	Default
5.	1		625		R185 G253 B255	
6.	9		306		R40 G149 B204	
7.	5		629		R255 G243 B139	
8.	12		252	12	Orange	Default
9.	14		517	14	Brown	Default
10.	3		661		R255 G191 B227	
11.	4		188		R235 G123 B145	
12.	13		466		R148 G69 B75	
13.	11		557		R27 G66 B138	



# Production Worksheet

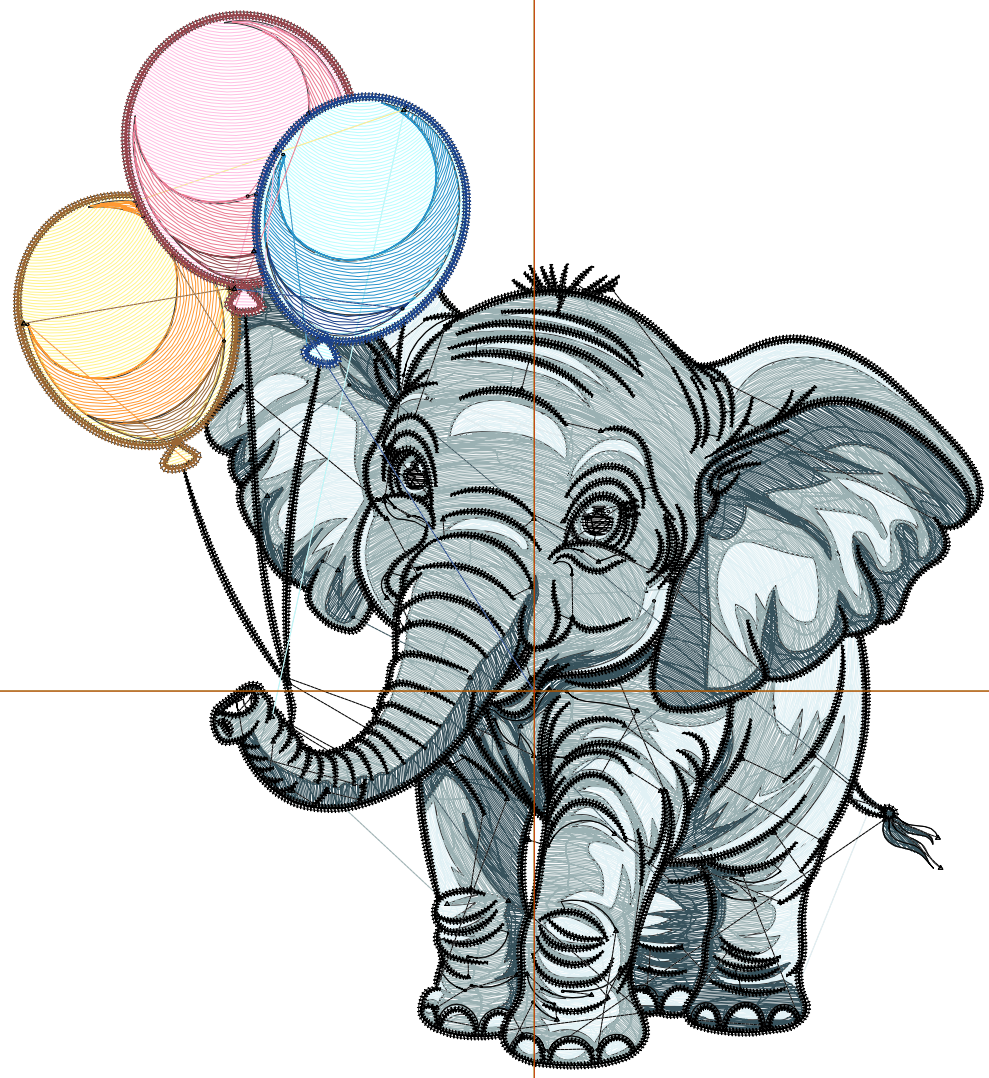
Wilcom EmbroideryStudio - Designing



Design: **5**

Title:

Stitches: 53,654  
Height: 5.51 in  
Width: 5.06 in  
Colors: 13  
Colorway: Colorway 1  
Zoom: 1:1



# Production Worksheet

Wilcom EmbroideryStudio - Designing



Design: **5**

Title:

Stitches: 53,654  
 Height: 5.51 in  
 Width: 5.06 in  
 Colors: 13  
 Colorway: Colorway 1  
 Zoom: 1:1

Machine format: Tajima  
 Color changes: 12  
 Stops: 13  
 Trims: 155  
 Appliqués: 0  
 Left: 69.0 mm  
 Right: 59.5 mm  
 Up: 90.0 mm  
 Down: 50.0 mm  
 EndX: 0.00 in  
 EndY: 0.00 in  
 Area 27.87 in<sup>2</sup>  
 Max stitch: 11.9 mm  
 Min stitch: 0.0 mm  
 Max jump: 7.0 mm  
 Total thread: 713.19ft  
 Total bobbin: 211.48ft

Stop Sequence:

#	N#	Color	St.	Code	Name	Chart
1.	2		8,262		R225 G241 B245	
2.	10		16,969		R155 G177 B179	
3.	7		6,983		R55 G82 B92	
4.	8		15,932	8	Black	Default
5.	1		842		R185 G253 B255	
6.	9		410		R40 G149 B204	
7.	5		846		R255 G243 B139	
8.	12		320	12	Orange	Default
9.	14		631	14	Brown	Default
10.	3		940		R255 G191 B227	
11.	4		236		R235 G123 B145	
12.	13		583		R148 G69 B75	
13.	11		698		R27 G66 B138	

# Production Worksheet

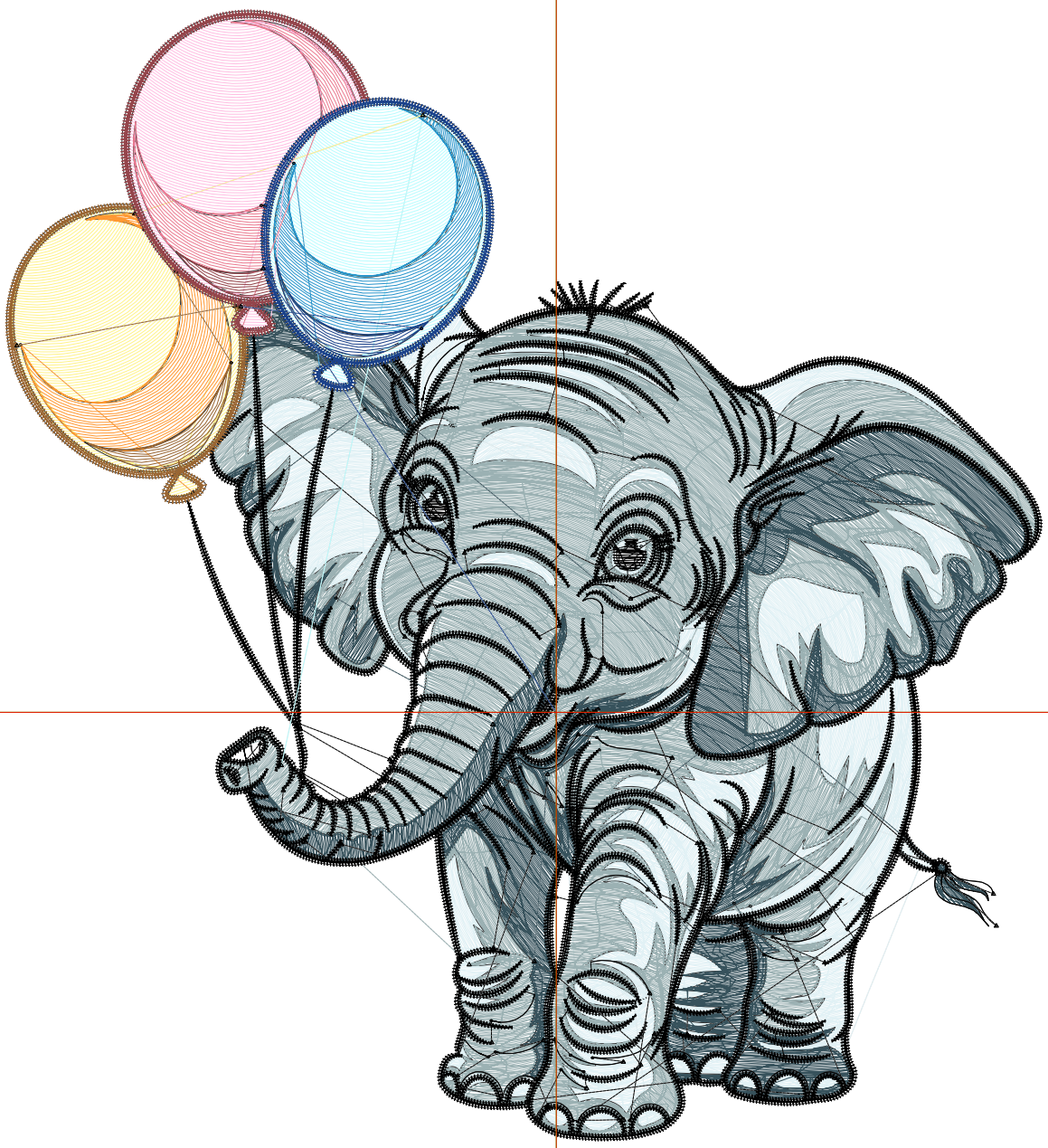
Wilcom EmbroideryStudio - Designing



Design: **6**

Title:

Stitches: 66,189  
Height: 6.51 in  
Width: 5.97 in  
Colors: 13  
Colorway: Colorway 1  
Zoom: 1:1



# Production Worksheet

Wilcom EmbroideryStudio - Designing



Design: **6**

Title:

Stitches: 66,189  
 Height: 6.51 in  
 Width: 5.97 in  
 Colors: 13  
 Colorway: Colorway 1  
 Zoom: 1:1

Machine format: Tajima  
 Color changes: 12  
 Stops: 13  
 Trims: 162  
 Appliqués: 0  
 Left: 80.6 mm  
 Right: 71.1 mm  
 Up: 102.7 mm  
 Down: 62.7 mm  
 EndX: 0.00 in  
 EndY: 0.00 in  
 Area 38.90 in<sup>2</sup>  
 Max stitch: 11.1 mm  
 Min stitch: 0.0 mm  
 Max jump: 7.0 mm  
 Total thread: 912.13ft  
 Total bobbin: 280.62ft

Stop Sequence:

#	N#	Color	St.	Code	Name	Chart
1.	2		10,320		R225 G241 B245	
2.	10		21,917		R155 G177 B179	
3.	7		8,657		R55 G82 B92	
4.	8		18,363	8	Black	Default
5.	1		1,074		R185 G253 B255	
6.	9		521		R40 G149 B204	
7.	5		1,108		R255 G243 B139	
8.	12		434	12	Orange	Default
9.	14		756	14	Brown	Default
10.	3		1,220		R255 G191 B227	
11.	4		295		R235 G123 B145	
12.	13		697		R148 G69 B75	
13.	11		825		R27 G66 B138	

# Production Worksheet

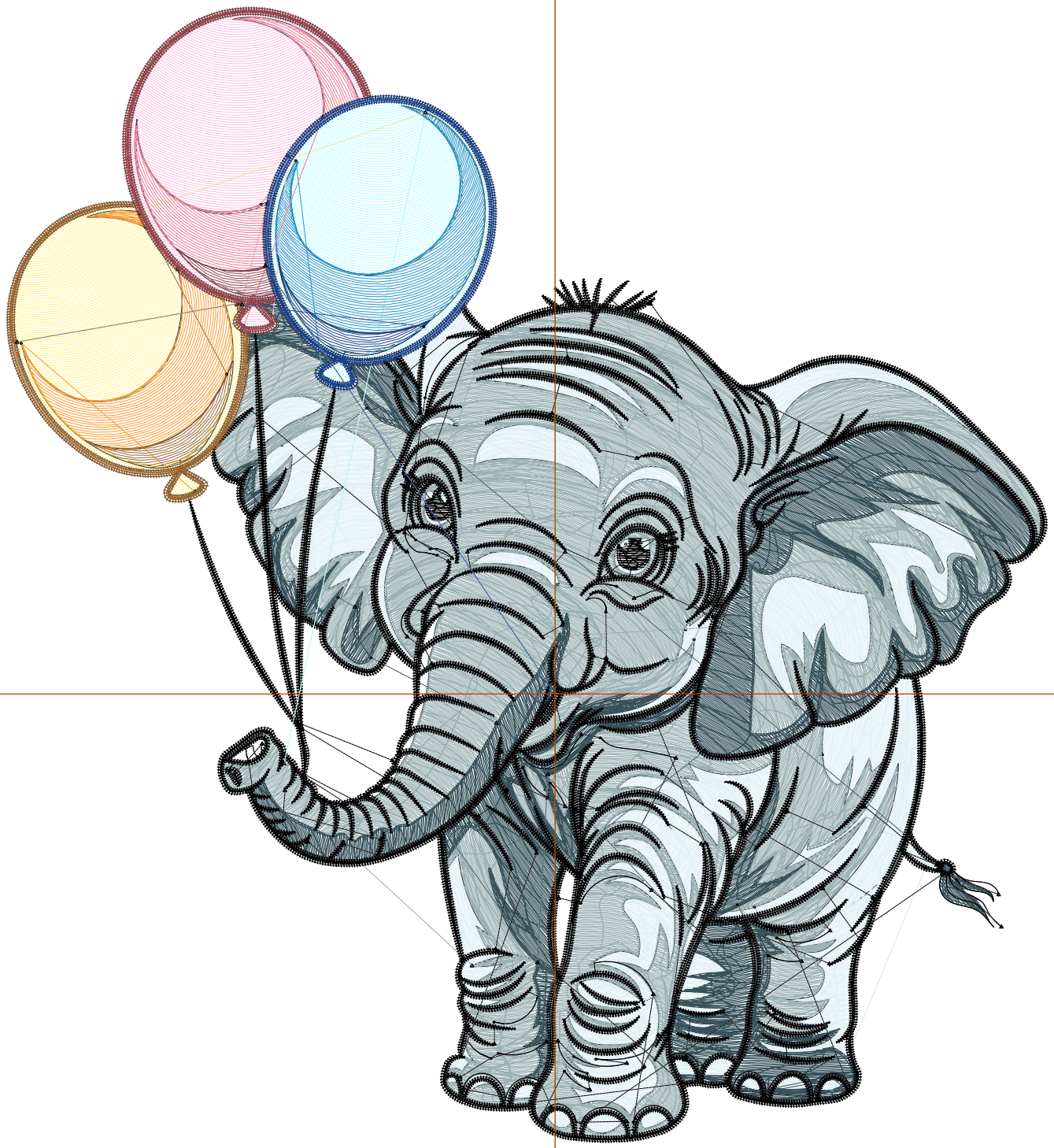
Wilcom EmbroideryStudio - Designing



Design: **7**

Title:

Stitches: 78,713  
Height: 7.51 in  
Width: 6.89 in  
Colors: 13  
Colorway: Colorway 1  
Zoom: 1:1



# Production Worksheet

Wilcom EmbroideryStudio - Designing



Design: **7**

Title:

Stitches: 78,713  
 Height: 7.51 in  
 Width: 6.89 in  
 Colors: 13  
 Colorway: Colorway 1  
 Zoom: 1:1

Machine format: Tajima  
 Color changes: 12  
 Stops: 13  
 Trims: 174  
 Appliqués: 0  
 Left: 92.2 mm  
 Right: 82.8 mm  
 Up: 115.4 mm  
 Down: 75.4 mm  
 EndX: 0.00 in  
 EndY: 0.00 in  
 Area 51.76 in<sup>2</sup>  
 Max stitch: 10.6 mm  
 Min stitch: 0.0 mm  
 Max jump: 7.0 mm  
 Total thread: 1118.74ft  
 Total bobbin: 354.36ft

Stop Sequence:

#	N#	Color	St.	Code	Name	Chart
1.	2		12,688		R225 G241 B245	
2.	10		26,163		R155 G177 B179	
3.	7		10,537		R55 G82 B92	
4.	8		20,867	8	Black	Default
5.	1		1,358		R185 G253 B255	
6.	9		657		R40 G149 B204	
7.	5		1,366		R255 G243 B139	
8.	12		517	12	Orange	Default
9.	14		872	14	Brown	Default
10.	3		1,552		R255 G191 B227	
11.	4		367		R235 G123 B145	
12.	13		801		R148 G69 B75	
13.	11		966		R27 G66 B138	

# Production Worksheet

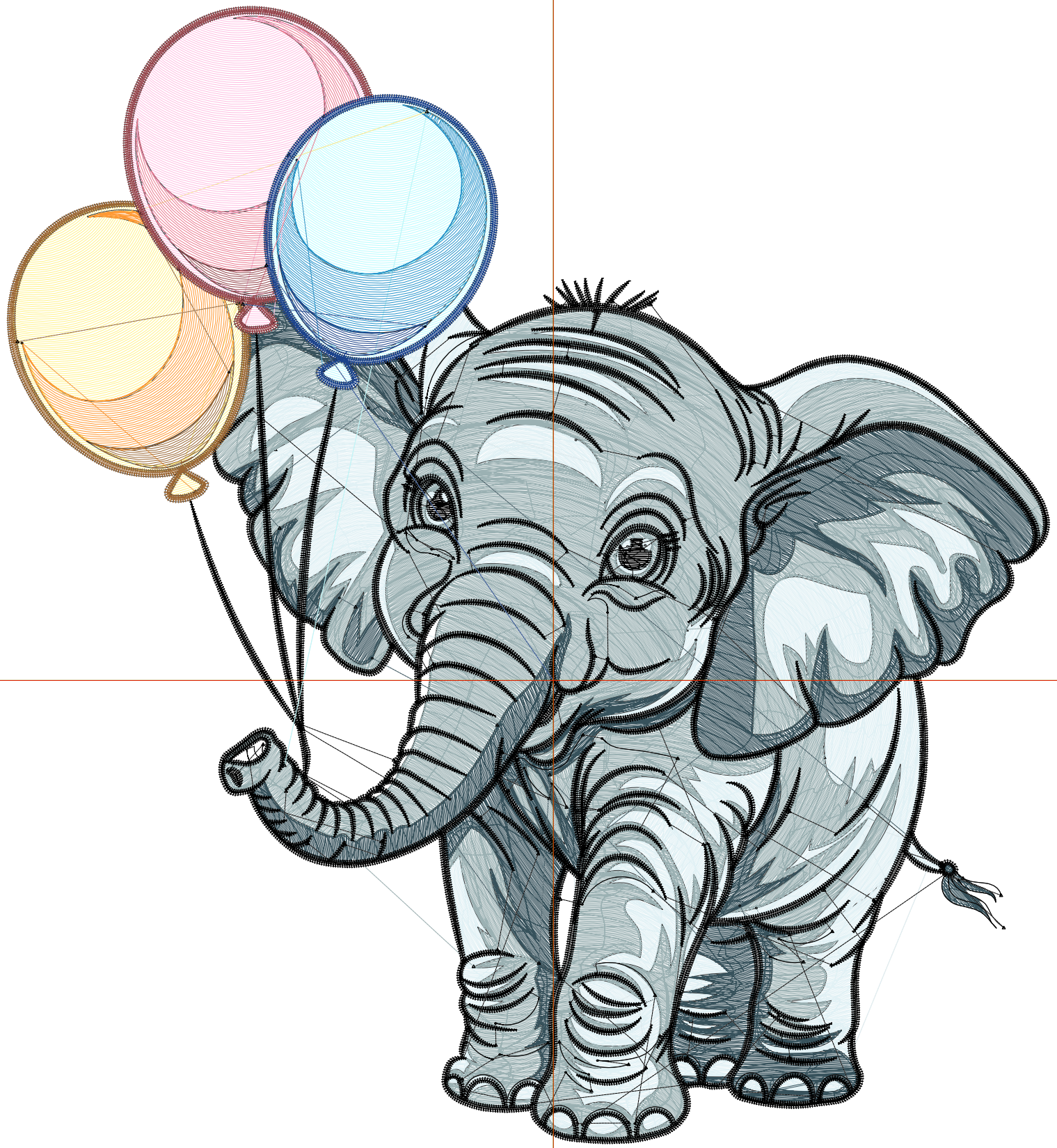
Wilcom EmbroideryStudio - Designing



Design: **8**

Title:

Stitches: 93,972  
Height: 8.51 in  
Width: 7.81 in  
Colors: 13  
Colorway: Colorway 1  
Zoom: 1:1



# Production Worksheet

Wilcom EmbroideryStudio - Designing



Design: **8**

Title:

Stitches: 93,972  
 Height: 8.51 in  
 Width: 7.81 in  
 Colors: 13  
 Colorway: Colorway 1  
 Zoom: 1:1

Machine format: Tajima  
 Color changes: 12  
 Stops: 13  
 Trims: 183  
 Appliqués: 0  
 Left: 103.9 mm  
 Right: 94.4 mm  
 Up: 128.1 mm  
 Down: 88.1 mm  
 EndX: 0.00 in  
 EndY: 0.00 in  
 Area 66.46 in<sup>2</sup>  
 Max stitch: 11.9 mm  
 Min stitch: 0.0 mm  
 Max jump: 7.0 mm  
 Total thread: 1366.42ft  
 Total bobbin: 441.80ft

Stop Sequence:

#	N#	Color	St.	Code	Name	Chart
1.	2		14,973		R225 G241 B245	
2.	10		32,906		R155 G177 B179	
3.	7		12,595		R55 G82 B92	
4.	8		23,367	8	Black	Default
5.	1		1,645		R185 G253 B255	
6.	9		796		R40 G149 B204	
7.	5		1,693		R255 G243 B139	
8.	12		638	12	Orange	Default
9.	14		1,011	14	Brown	Default
10.	3		1,902		R255 G191 B227	
11.	4		428		R235 G123 B145	
12.	13		907		R148 G69 B75	
13.	11		1,109		R27 G66 B138	