

Production Worksheet

Wilcom EmbroideryStudio - Designing



Design: **2**

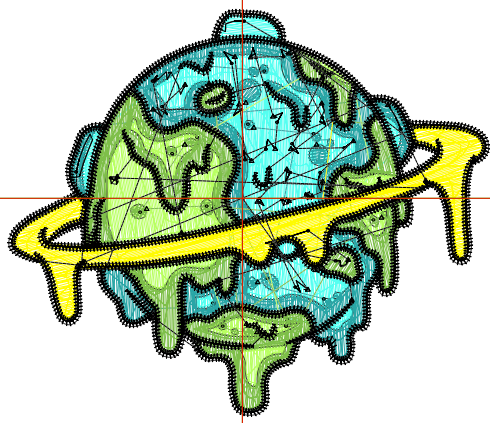
Title:

Stitches: 13,548
 Height: 2.12 in
 Width: 2.51 in
 Colors: 6
 Colorway: Colorway 1
 Zoom: 1:1

Machine format: Tajima
 Color changes: 5
 Stops: 6
 Trims: 80
 Appliqués: 0
 Left: 31.0 mm
 Right: 32.8 mm
 Up: 25.0 mm
 Down: 28.9 mm
 EndX: 0.00 in
 EndY: 0.00 in
 Area 5.33 in²
 Max stitch: 10.7 mm
 Min stitch: 0.0 mm
 Max jump: 7.0 mm
 Total thread: 176.91ft
 Total bobbin: 50.99ft

Stop Sequence:

#	N#	Color	St.	Code	Name	Chart
1.	5		1,580		R84 G255 B241	
2.	4		2,324		R41 G166 B166	
3.	3		1,147		R185 G255 B98	
4.	2		2,414		R126 G191 B73	
5.	1		1,062		R255 G251 B0	
6.	8		5,019	8	Black	Default



Production Worksheet

Wilcom EmbroideryStudio - Designing



Design: **3**

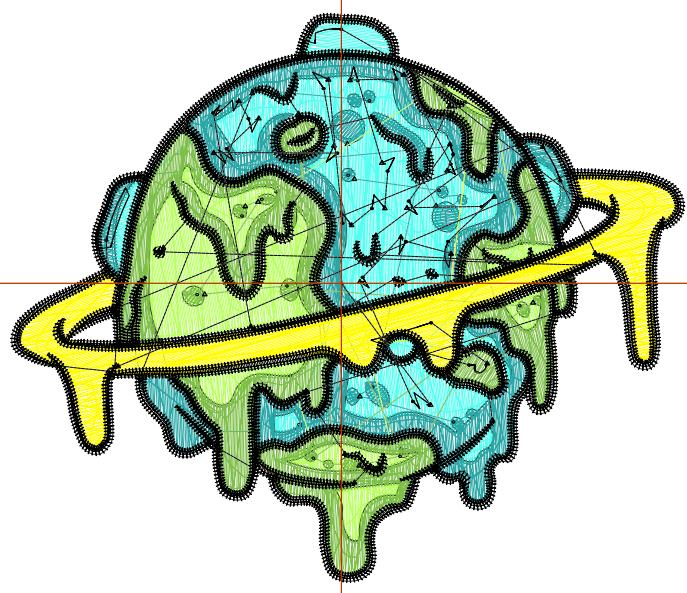
Title:

Stitches: 19,404
Height: 2.97 in
Width: 3.51 in
Colors: 6
Colorway: Colorway 1
Zoom: 1:1

Machine format: Tajima
Color changes: 5
Stops: 6
Trims: 87
Appliqués: 0
Left: 43.7 mm
Right: 45.5 mm
Up: 35.7 mm
Down: 39.6 mm
EndX: 0.00 in
EndY: 0.00 in
Area 10.42 in²
Max stitch: 7.7 mm
Min stitch: 0.0 mm
Max jump: 6.7 mm
Total thread: 279.77ft
Total bobbin: 89.17ft

Stop Sequence:

#	N#	Color	St.	Code	Name	Chart
1.	5		2,415		R84 G255 B241	
2.	4		3,309		R41 G166 B166	
3.	3		1,730		R185 G255 B98	
4.	2		3,510		R126 G191 B73	
5.	1		1,677		R255 G251 B0	
6.	8		6,761	8	Black	Default



Production Worksheet

Wilcom EmbroideryStudio - Designing



Design: **4**

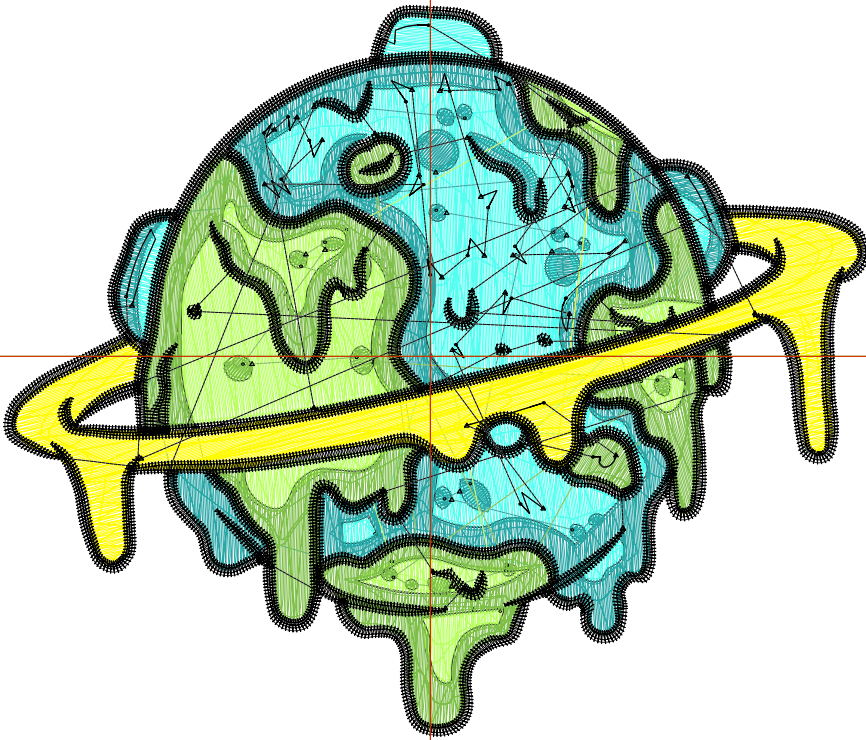
Title:

Stitches: 25,711
 Height: 3.81 in
 Width: 4.51 in
 Colors: 6
 Colorway: Colorway 1
 Zoom: 1:1

Machine format: Tajima
 Color changes: 5
 Stops: 6
 Trims: 94
 Appliqués: 0
 Left: 56.5 mm
 Right: 58.2 mm
 Up: 46.4 mm
 Down: 50.3 mm
 EndX: 0.00 in
 EndY: 0.00 in
 Area 17.19 in²
 Max stitch: 7.8 mm
 Min stitch: 0.2 mm
 Max jump: 7.0 mm
 Total thread: 401.75ft
 Total bobbin: 136.94ft

Stop Sequence:

#	N#	Color	St.	Code	Name	Chart
1.	5		3,345		R84 G255 B241	
2.	4		4,351		R41 G166 B166	
3.	3		2,372		R185 G255 B98	
4.	2		4,699		R126 G191 B73	
5.	1		2,426		R255 G251 B0	
6.	8		8,516	8	Black	Default



Production Worksheet

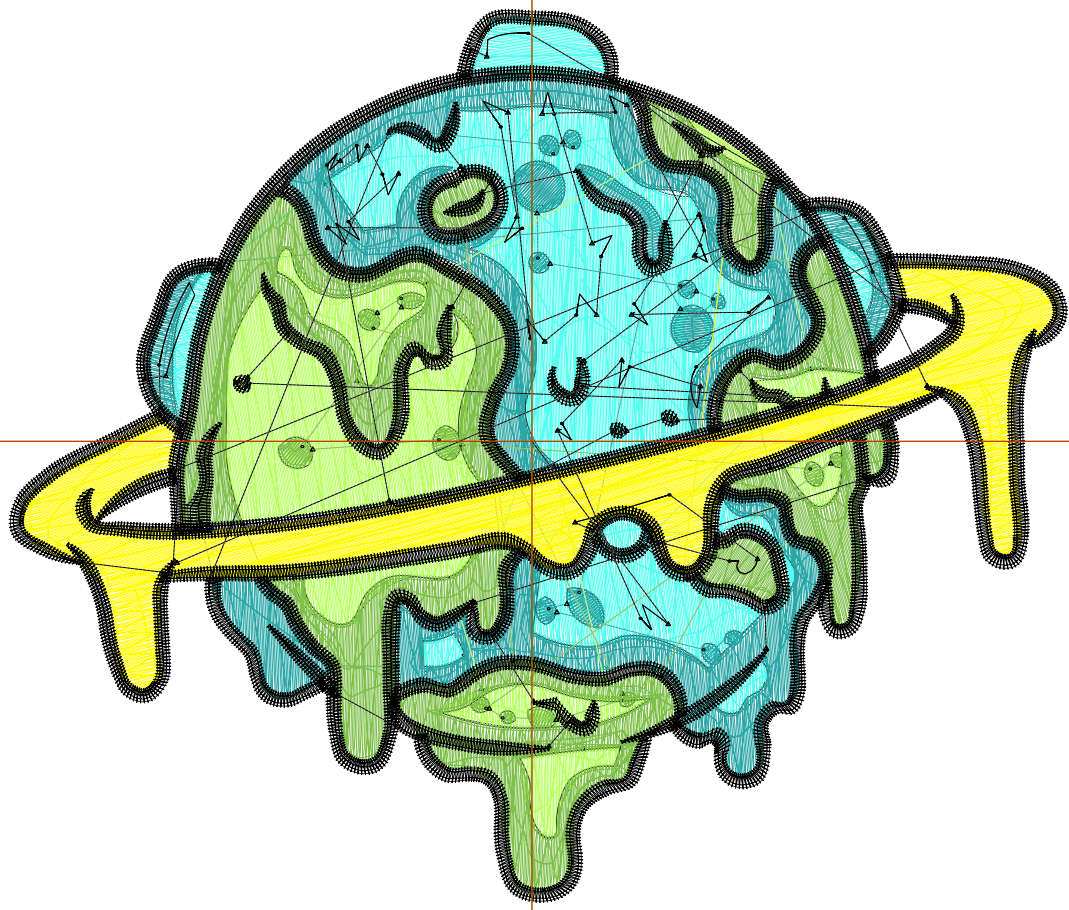
Wilcom EmbroideryStudio - Designing



Design: **5**

Title:

Stitches: 32,704
Height: 4.65 in
Width: 5.51 in
Colors: 6
Colorway: Colorway 1
Zoom: 1:1



1

1

2

2

Production Worksheet

Wilcom EmbroideryStudio - Designing



Design: **5**

Title:

Stitches: 32,704
 Height: 4.65 in
 Width: 5.51 in
 Colors: 6
 Colorway: Colorway 1
 Zoom: 1:1

Machine format: Tajima
 Color changes: 5
 Stops: 6
 Trims: 98
 Appliqués: 0
 Left: 69.1 mm
 Right: 70.9 mm
 Up: 57.1 mm
 Down: 61.0 mm
 EndX: 0.00 in
 EndY: 0.00 in
 Area 25.65 in²
 Max stitch: 9.5 mm
 Min stitch: 0.0 mm
 Max jump: 7.0 mm
 Total thread: 545.79ft
 Total bobbin: 195.10ft

Stop Sequence:

#	N#	Color	St.	Code	Name	Chart
1.	5		4,463		R84 G255 B241	
2.	4		5,585		R41 G166 B166	
3.	3		3,134		R185 G255 B98	
4.	2		6,016		R126 G191 B73	
5.	1		3,280		R255 G251 B0	
6.	8		10,224	8	Black	Default

Production Worksheet

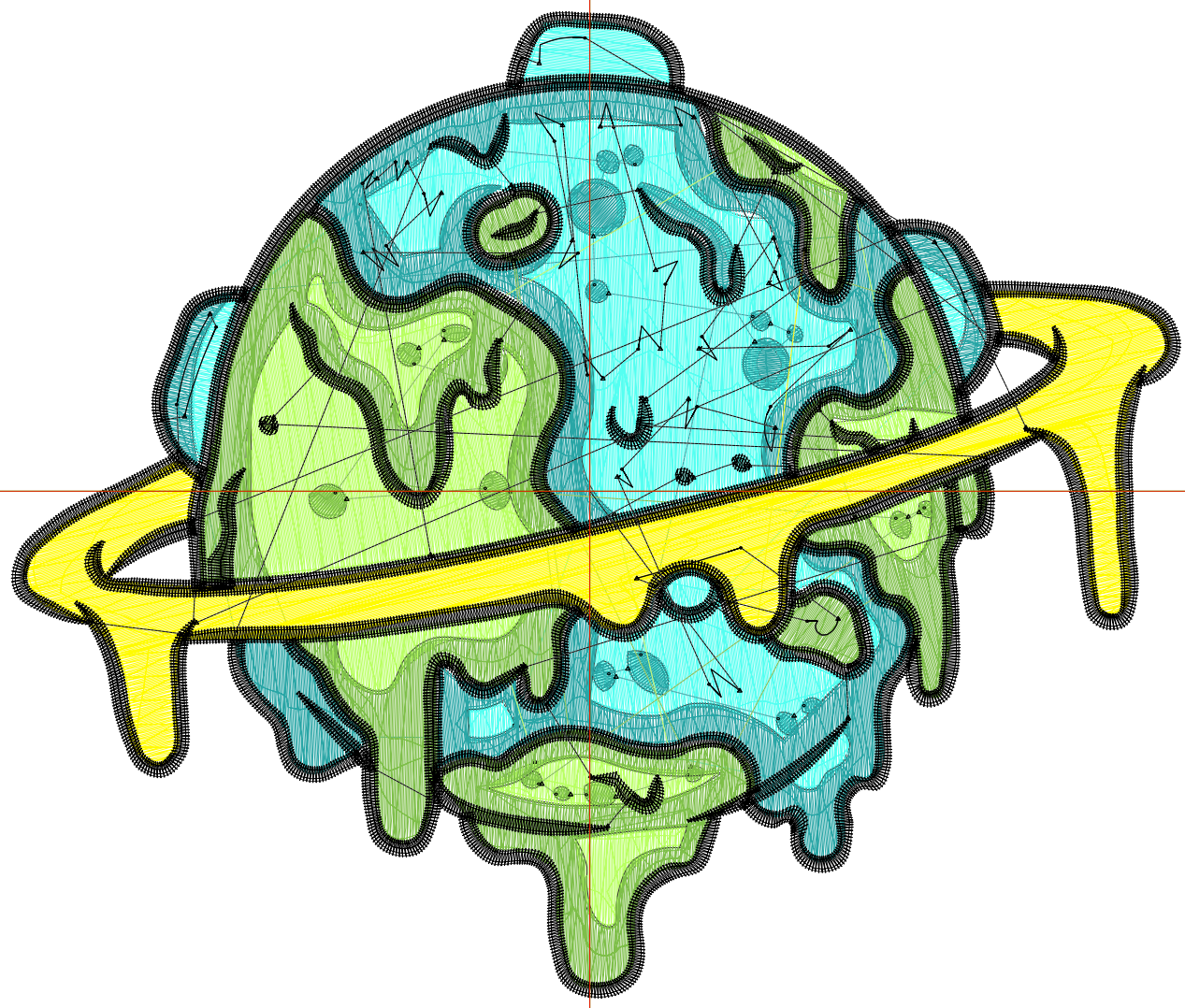
Wilcom EmbroideryStudio - Designing



Design: **6**

Title:

Stitches: 40,542
Height: 5.50 in
Width: 6.51 in
Colors: 6
Colorway: Colorway 1
Zoom: 1:1



Production Worksheet

Wilcom EmbroideryStudio - Designing



Design: **6**

Title:

Stitches: 40,542
 Height: 5.50 in
 Width: 6.51 in
 Colors: 6
 Colorway: Colorway 1
 Zoom: 1:1

Machine format: Tajima
 Color changes: 5
 Stops: 6
 Trims: 102
 Appliqués: 0
 Left: 81.8 mm
 Right: 83.6 mm
 Up: 67.9 mm
 Down: 71.7 mm
 EndX: 0.00 in
 EndY: 0.00 in
 Area 35.79 in²
 Max stitch: 11.2 mm
 Min stitch: 0.0 mm
 Max jump: 7.0 mm
 Total thread: 712.86ft
 Total bobbin: 263.62ft

Stop Sequence:

#	N#	Color	St.	Code	Name	Chart
1.	5		5,720		R84 G255 B241	
2.	4		6,930		R41 G166 B166	
3.	3		3,936		R185 G255 B98	
4.	2		7,612		R126 G191 B73	
5.	1		4,344		R255 G251 B0	
6.	8		11,998	8	Black	Default