

Production Worksheet

Wilcom EmbroideryStudio - Designing



Design: **3**

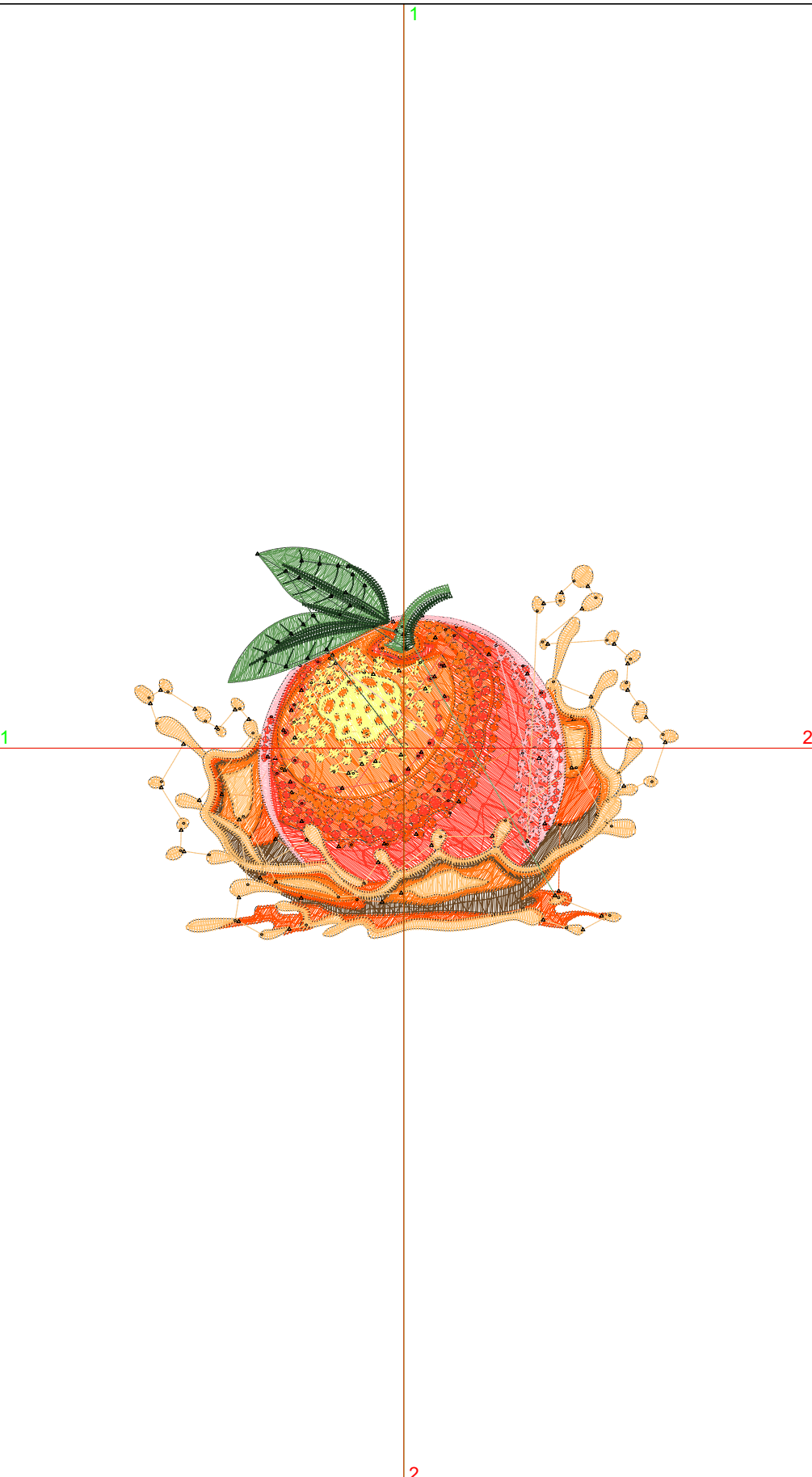
Title:

Stitches: 23,002
 Height: 2.53 in
 Width: 3.50 in
 Colors: 9
 Colorway: Colorway 1
 Zoom: 1:1

Machine format: Tajima
 Color changes: 10
 Stops: 11
 Trims: 124
 Appliqués: 0
 Left: 44.1 mm
 Right: 44.9 mm
 Up: 32.9 mm
 Down: 31.4 mm
 EndX: 0.00 in
 EndY: 0.00 in
 Area: 8.87 in²
 Max stitch: 8.9 mm
 Min stitch: 0.0 mm
 Max jump: 7.0 mm
 Total thread: 291.62ft
 Total bobbin: 81.23ft

Stop Sequence:

#	N#	Color	St.	Code	Name	Chart
1.	4		1,568	R107	G71 B36	
2.	2		1,936	R255	G59 B41	
3.	7		4,075	R255	G77 B1	
4.	6		4,204	R255	G117 B18	
5.	9		1,919	R253	G255 B140	
6.	8		935	R255	G194 B201	
7.	2		1,779	R255	G59 B41	
8.	8		550	R255	G194 B201	
9.	1		3,629	R255	G193 B112	
10.	3		1,532	R96	G153 B85	
11.	5		873	R28	G59 B29	



Production Worksheet

Wilcom EmbroideryStudio - Designing



Design: **4**

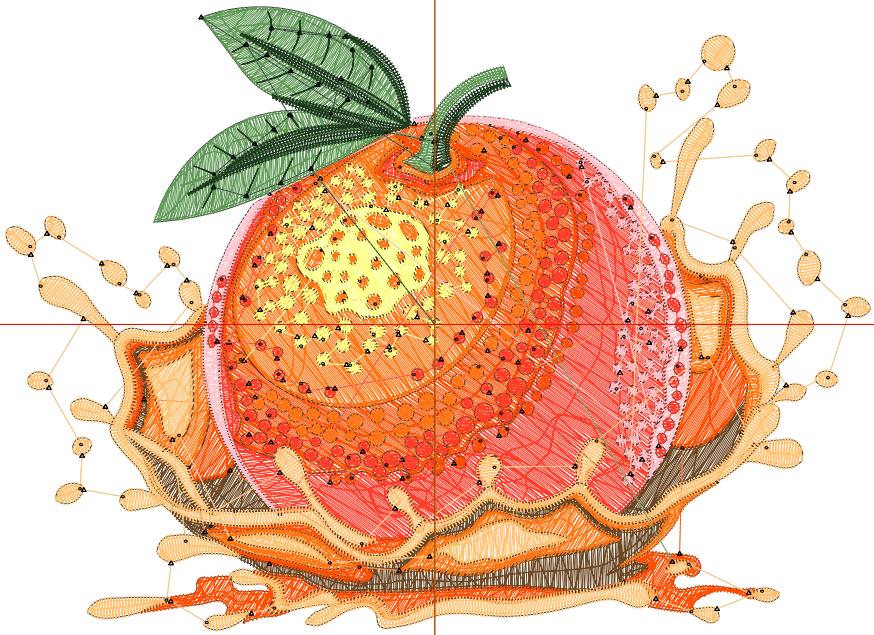
Title:

Stitches: 30,549
 Height: 3.25 in
 Width: 4.50 in
 Colors: 9
 Colorway: Colorway 1
 Zoom: 1:1

Machine format: Tajima
 Color changes: 10
 Stops: 11
 Trims: 155
 Appliqués: 0
 Left: 56.8 mm
 Right: 57.6 mm
 Up: 42.0 mm
 Down: 40.6 mm
 EndX: 0.00 in
 EndY: 0.00 in
 Area: 14.65 in²
 Max stitch: 11.5 mm
 Min stitch: 0.0 mm
 Max jump: 6.9 mm
 Total thread: 414.47ft
 Total bobbin: 124.69ft

Stop Sequence:

#	N#	Color	St.	Code	Name	Chart
1.	4		2,071		R107 G71 B36	
2.	2		2,731		R255 G59 B41	
3.	7		5,453		R255 G77 B1	
4.	6		5,626		R255 G117 B18	
5.	9		2,459		R253 G255 B140	
6.	8		1,229		R255 G194 B201	
7.	2		2,369		R255 G59 B41	
8.	8		900		R255 G194 B201	
9.	1		4,533		R255 G193 B112	
10.	3		2,133		R96 G153 B85	
11.	5		1,043		R28 G59 B29	



Production Worksheet

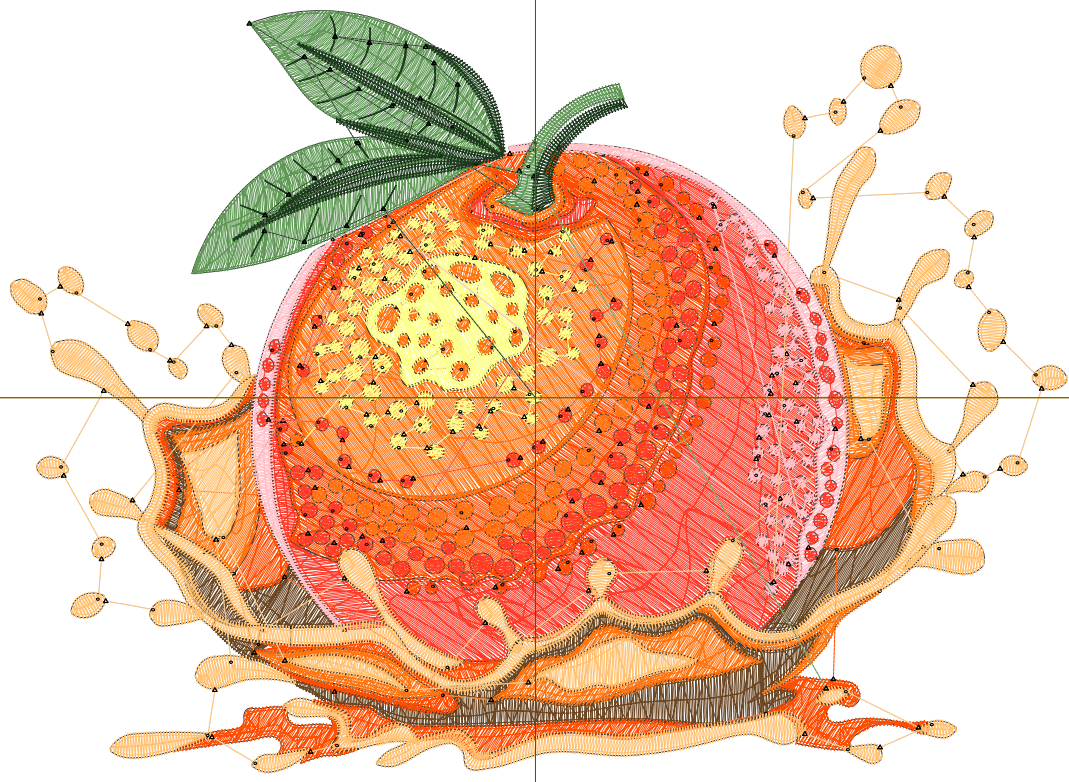
Wilcom EmbroideryStudio - Designing



Design: **5**

Title:

Stitches: 38,080
Height: 3.97 in
Width: 5.50 in
Colors: 9
Colorway: Colorway 1
Zoom: 1:1



Production Worksheet

Wilcom EmbroideryStudio - Designing



Design: **5**

Title:

Stitches: 38,080
 Height: 3.97 in
 Width: 5.50 in
 Colors: 9
 Colorway: Colorway 1
 Zoom: 1:1

Machine format: Tajima
 Color changes: 10
 Stops: 11
 Trims: 183
 Appliqués: 0
 Left: 69.5 mm
 Right: 70.3 mm
 Up: 51.2 mm
 Down: 49.7 mm
 EndX: 0.00 in
 EndY: 0.00 in
 Area 21.87 in²
 Max stitch: 7.1 mm
 Min stitch: 0.0 mm
 Max jump: 6.9 mm
 Total thread: 550.01ft
 Total bobbin: 175.72ft

Stop Sequence:

#	N#	Color	St.	Code	Name	Chart
1.	4		2,647		R107 G71 B36	
2.	2		3,631		R255 G59 B41	
3.	7		6,920		R255 G77 B1	
4.	6		7,045		R255 G117 B18	
5.	9		2,920		R253 G255 B140	
6.	8		1,539		R255 G194 B201	
7.	2		2,649		R255 G59 B41	
8.	8		1,108		R255 G194 B201	
9.	1		5,471		R255 G193 B112	
10.	3		2,912		R96 G153 B85	
11.	5		1,236		R28 G59 B29	

Production Worksheet

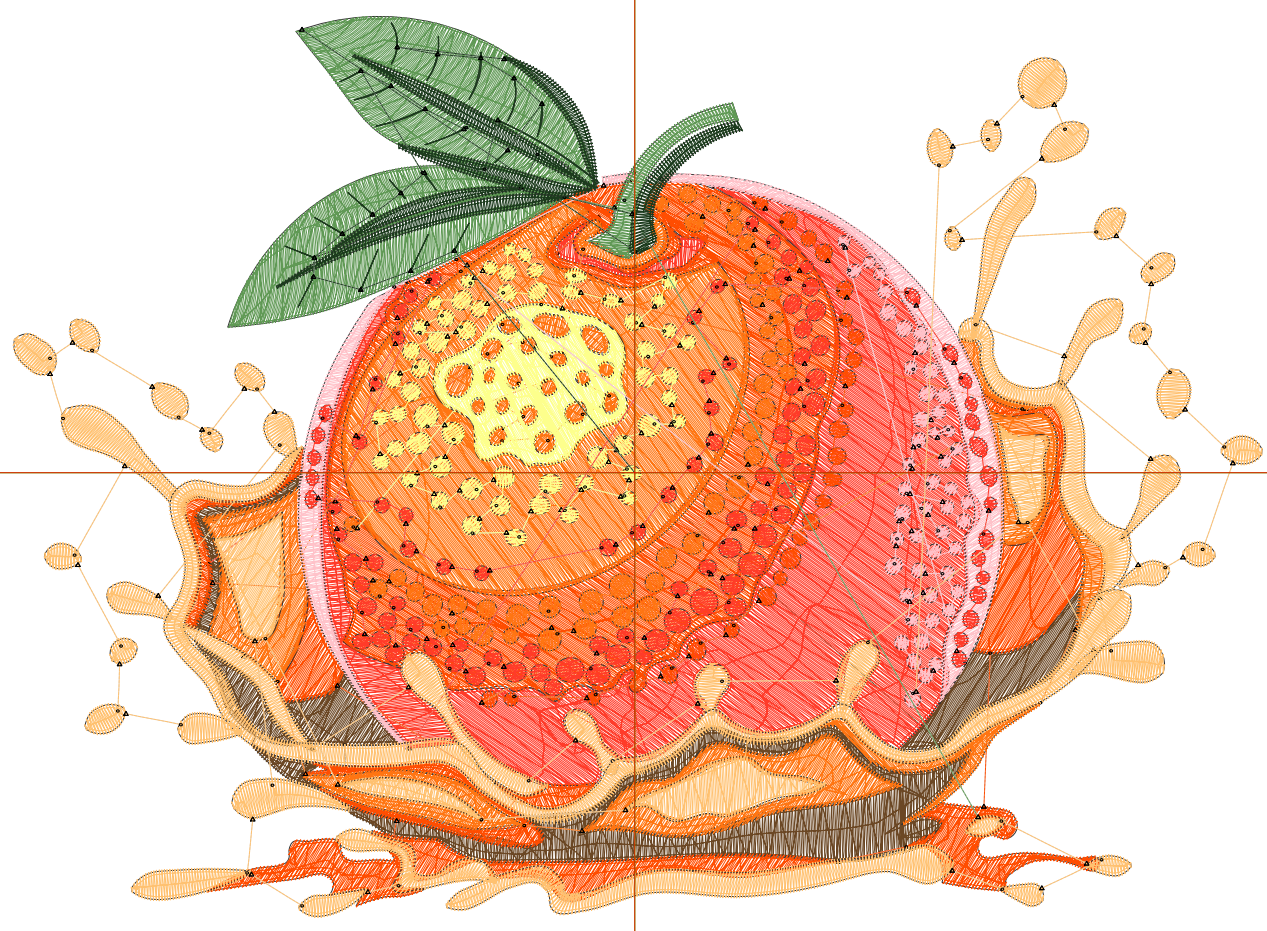
Wilcom EmbroideryStudio - Designing



Design: **6**

Title:

Stitches: 46,298
Height: 4.69 in
Width: 6.51 in
Colors: 9
Colorway: Colorway 1
Zoom: 1:1



Production Worksheet

Wilcom EmbroideryStudio - Designing



Design: **6**

Title:

Stitches: 46,298
 Height: 4.69 in
 Width: 6.51 in
 Colors: 9
 Colorway: Colorway 1
 Zoom: 1:1

Machine format: Tajima
 Color changes: 10
 Stops: 11
 Trims: 216
 Appliqués: 0
 Left: 82.3 mm
 Right: 83.0 mm
 Up: 60.3 mm
 Down: 58.9 mm
 EndX: 0.00 in
 EndY: 0.00 in
 Area 30.53 in²
 Max stitch: 7.3 mm
 Min stitch: 0.0 mm
 Max jump: 7.0 mm
 Total thread: 706.00ft
 Total bobbin: 236.21ft

Stop Sequence:

#	N#	Color	St.	Code	Name	Chart
1.	4		3,232		R107 G71 B36	
2.	2		4,643		R255 G59 B41	
3.	7		8,587		R255 G77 B1	
4.	6		8,623		R255 G117 B18	
5.	9		3,456		R253 G255 B140	
6.	8		1,821		R255 G194 B201	
7.	2		3,088		R255 G59 B41	
8.	8		1,231		R255 G194 B201	
9.	1		6,421		R255 G193 B112	
10.	3		3,786		R96 G153 B85	
11.	5		1,408		R28 G59 B29	

Production Worksheet

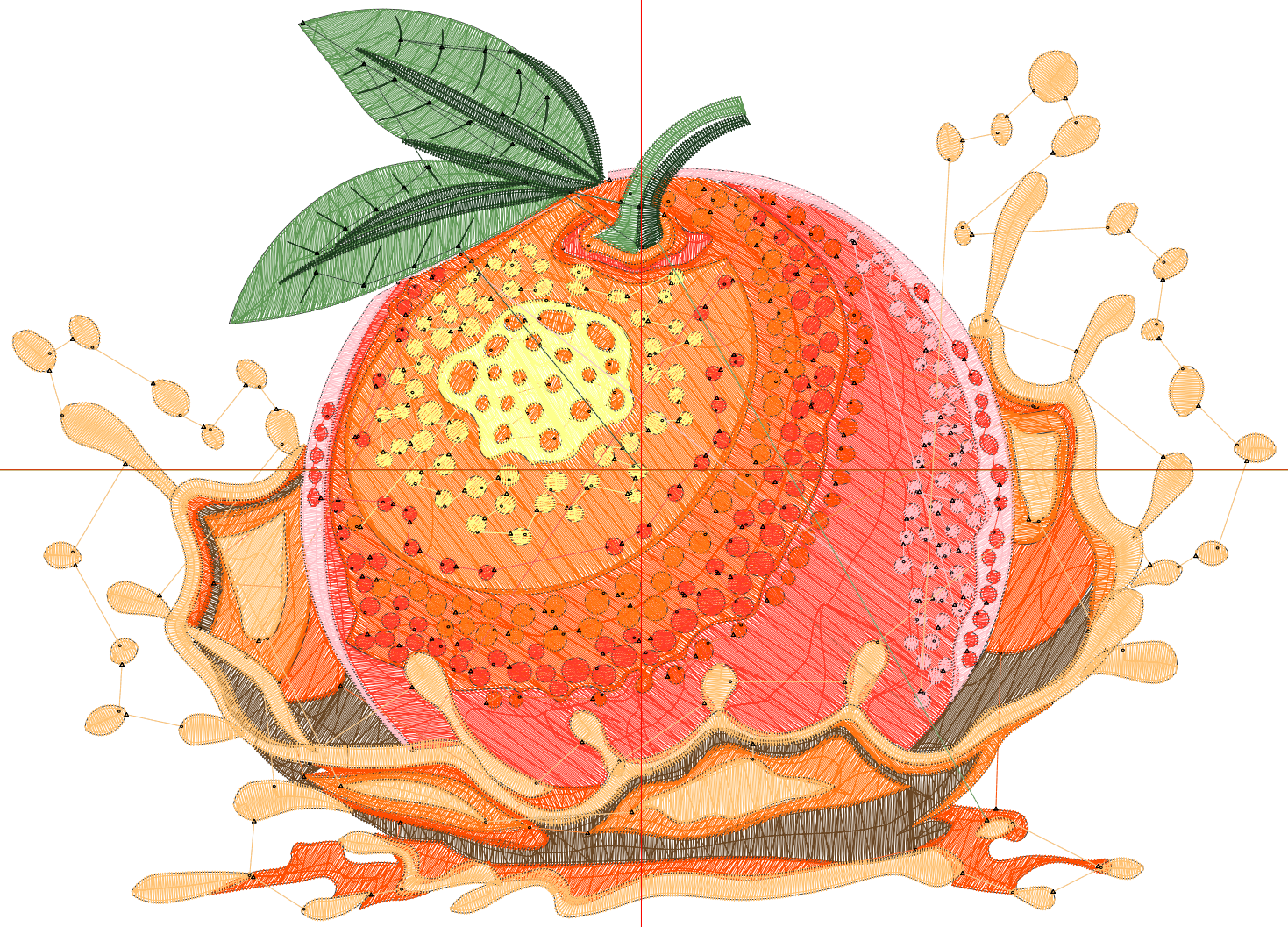
Wilcom EmbroideryStudio - Designing



Design: **7**

Title:

Stitches: 55,359
Height: 5.42 in
Width: 7.50 in
Colors: 9
Colorway: Colorway 1
Zoom: 1:1



Production Worksheet

Wilcom EmbroideryStudio - Designing



Design: **7**

Title:

Stitches: 55,359
 Height: 5.42 in
 Width: 7.50 in
 Colors: 9
 Colorway: Colorway 1
 Zoom: 1:1

Machine format: Tajima
 Color changes: 10
 Stops: 11
 Trims: 252
 Appliqués: 0
 Left: 94.9 mm
 Right: 95.7 mm
 Up: 69.6 mm
 Down: 68.0 mm
 EndX: 0.00 in
 EndY: 0.00 in
 Area 40.65 in²
 Max stitch: 9.7 mm
 Min stitch: 0.0 mm
 Max jump: 6.9 mm
 Total thread: 883.00ft
 Total bobbin: 305.86ft

Stop Sequence:

#	N#	Color	St.	Code	Name	Chart
1.	4		3,876		R107 G71 B36	
2.	2		5,843		R255 G59 B41	
3.	7		10,340		R255 G77 B1	
4.	6		10,392		R255 G117 B18	
5.	9		4,039		R253 G255 B140	
6.	8		2,189		R255 G194 B201	
7.	2		3,446		R255 G59 B41	
8.	8		1,406		R255 G194 B201	
9.	1		7,485		R255 G193 B112	
10.	3		4,752		R96 G153 B85	
11.	5		1,589		R28 G59 B29	

Production Worksheet

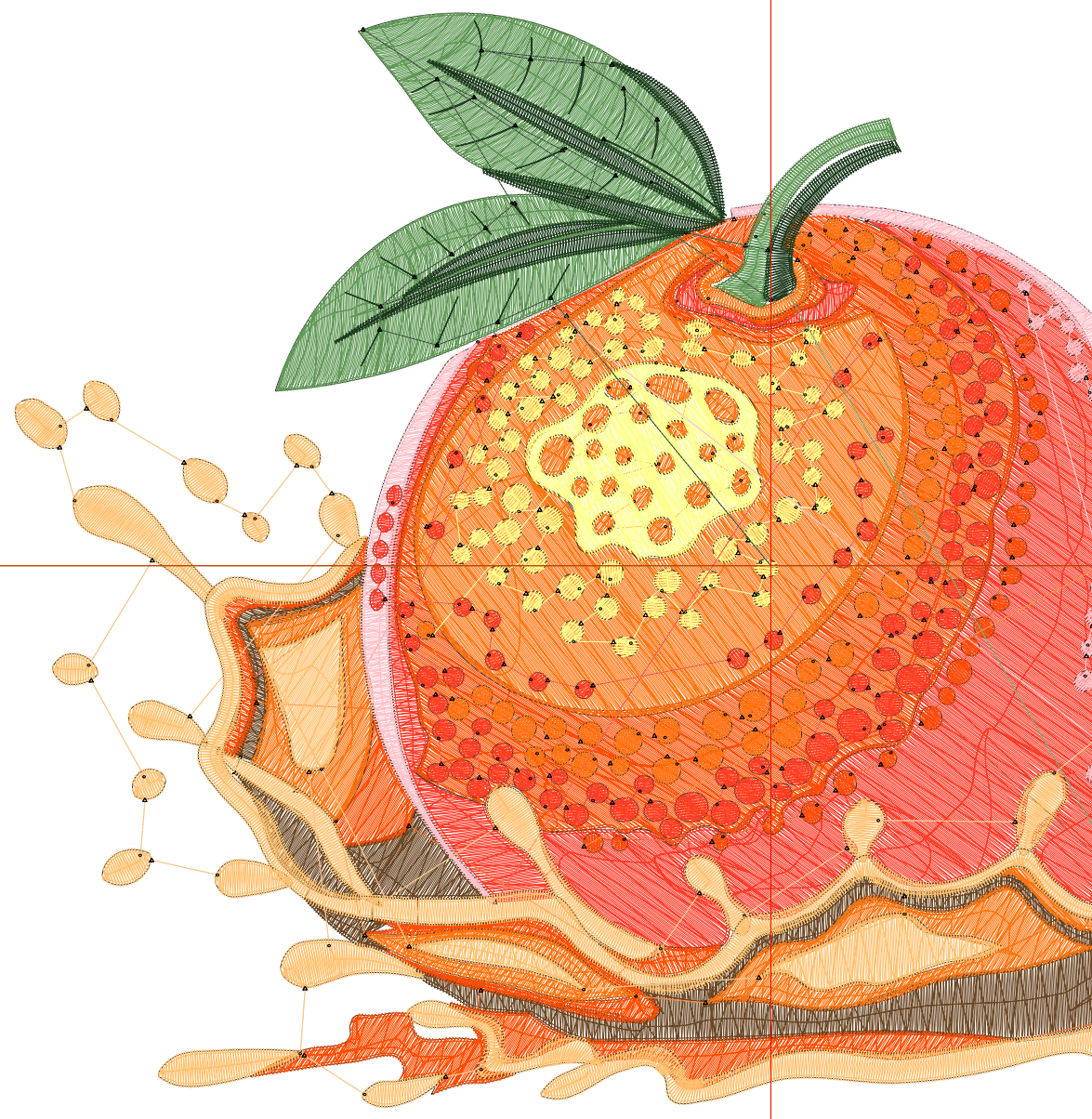
Wilcom EmbroideryStudio - Designing



Design: **8**

Title:

Stitches: 64,548
Height: 6.14 in
Width: 8.50 in
Colors: 9
Colorway: Colorway 1
Zoom: 1:1



1 1
1 1

2 2
2 2

Production Worksheet

Wilcom EmbroideryStudio - Designing



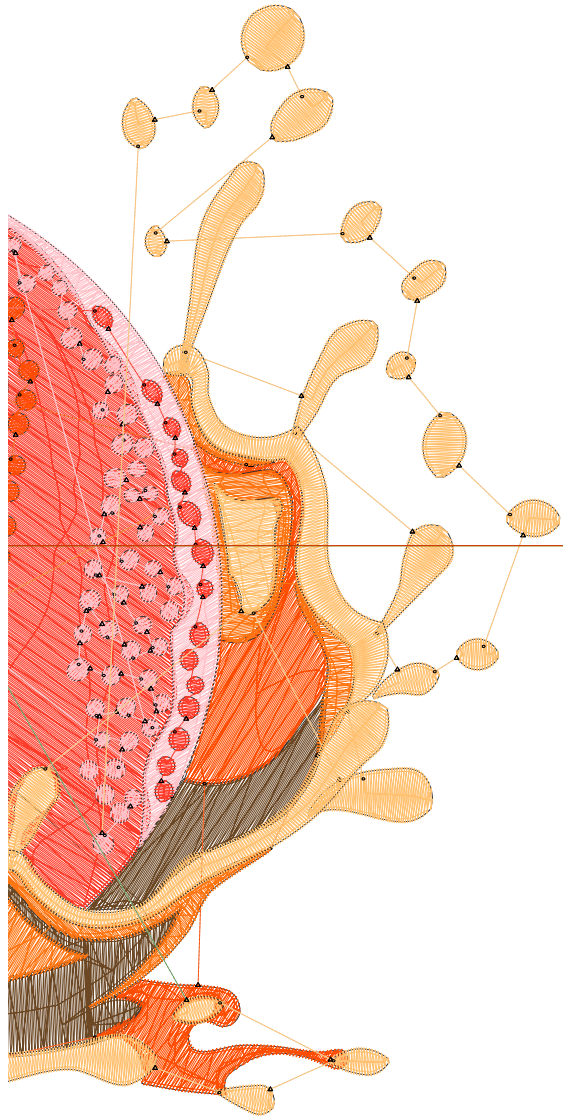
Design: **8**

Title:

Stitches: 64,548
 Height: 6.14 in
 Width: 8.50 in
 Colors: 9
 Colorway: Colorway 1
 Zoom: 1:1

1 1
 1 1

Machine format: Tajima
 Color changes: 10
 Stops: 11
 Trims: 273
 Appliqués: 0
 Left: 107.6 mm
 Right: 108.4 mm
 Up: 78.7 mm
 Down: 77.2 mm
 EndX: 0.00 in
 EndY: 0.00 in
 Area: 52.19 in²
 Max stitch: 8.4 mm
 Min stitch: 0.0 mm
 Max jump: 7.0 mm
 Total thread: 1074.95ft
 Total bobbin: 383.88ft



Stop Sequence:

#	N#	Color	St.	Code	Name	Chart
1.	4		4,536	R107	G71 B36	
2.	2		7,119	R255	G59 B41	
3.	7		12,266	R255	G77 B1	
4.	6		12,205	R255	G117 B18	
5.	9		4,382	R253	G255 B140	
6.	8		2,530	R255	G194 B201	
7.	2		3,804	R255	G59 B41	
8.	8		1,540	R255	G194 B201	
9.	1		8,606	R255	G193 B112	
10.	3		5,779	R96	G153 B85	
11.	5		1,779	R28	G59 B29	

2 2
 2 2