

# Production Worksheet

Wilcom EmbroideryStudio - Designing



Design: **4**

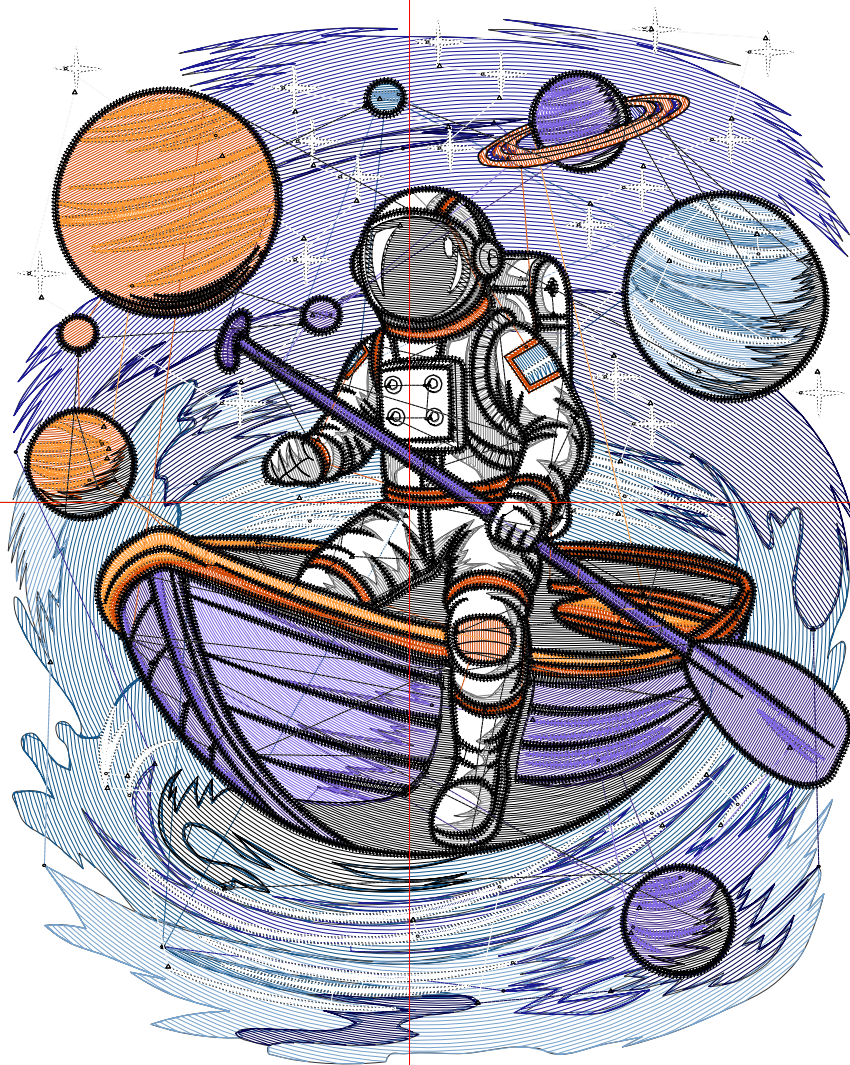
Title:

Stitches: 52,181  
 Height: 5.50 in  
 Width: 4.40 in  
 Colors: 11  
 Colorway: Colorway 1  
 Zoom: 1:1

Machine format: Tajima  
 Color changes: 10  
 Stops: 11  
 Trims: 220  
 Appliqués: 0  
 Left: 52.9 mm  
 Right: 58.8 mm  
 Up: 65.4 mm  
 Down: 74.3 mm  
 EndX: 0.00 in  
 EndY: 0.00 in  
 Area: 24.18 in<sup>2</sup>  
 Max stitch: 9.3 mm  
 Min stitch: 0.0 mm  
 Max jump: 6.9 mm  
 Total thread: 683.31ft  
 Total bobbin: 199.88ft

Stop Sequence:

#	N#	Color	St.	Code	Name	Chart
1.	5		3,401		R20 G87 B138	
2.	8		2,300		R118 G162 B204	
3.	1		3,093		R27 G25 B148	
4.	6		1,733		R3 G1 B77	
5.	9		7,560	9	White	Default
6.	2		2,510		R130 G130 B130	
7.	7		2,713		R64 G39 B133	
8.	3		2,884		R129 G105 B227	
9.	4		4,041		R212 G71 B0	
10.	12		2,804	12	Orange	Default
11.	28		19,140	8	Black	Default



# Production Worksheet

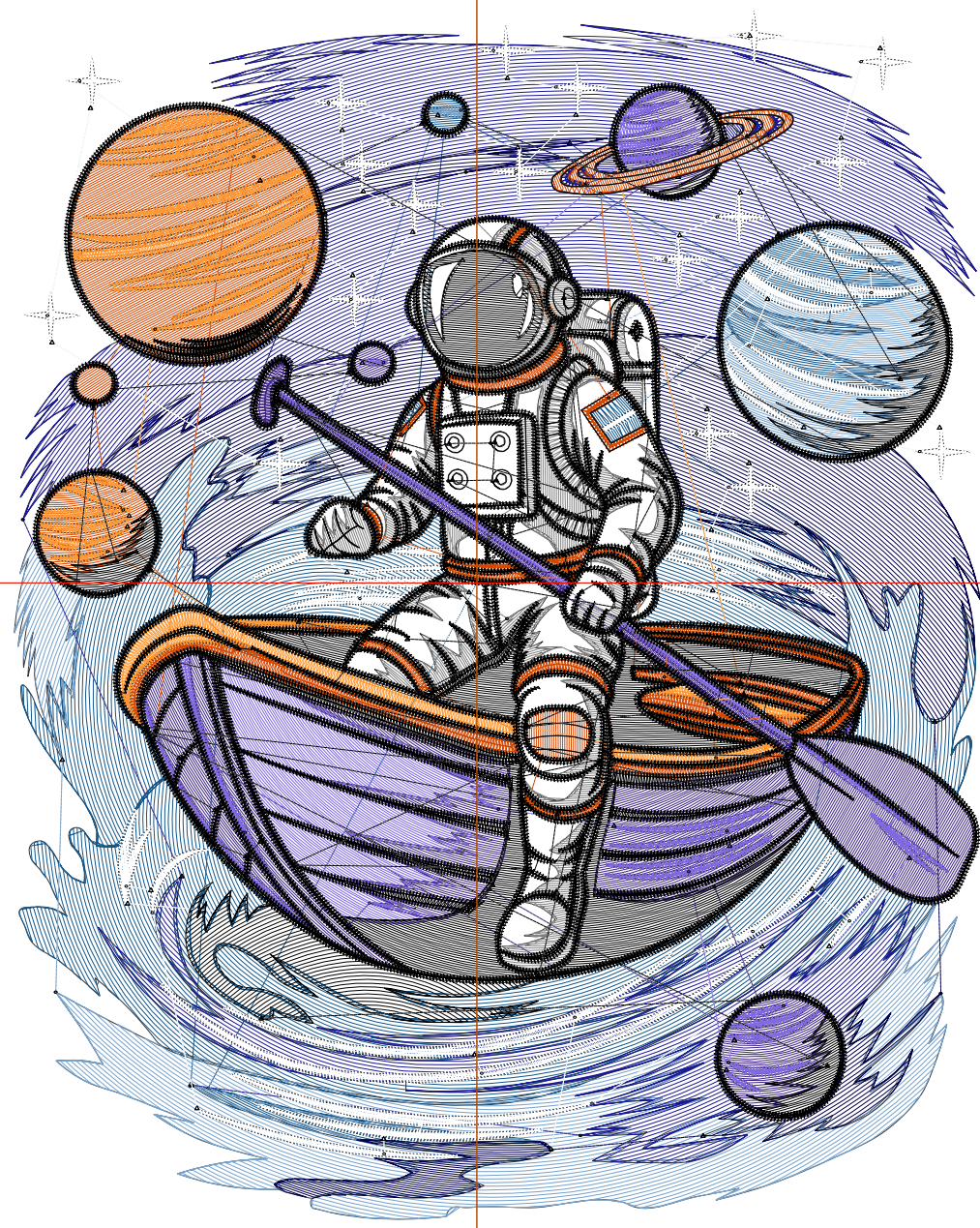
Wilcom EmbroideryStudio - Designing



Design: **5**

Title:

Stitches: 63,443  
Height: 6.50 in  
Width: 5.20 in  
Colors: 11  
Colorway: Colorway 1  
Zoom: 1:1



# Production Worksheet

Wilcom EmbroideryStudio - Designing



Design: **5**

Title:

Stitches: 63,443  
 Height: 6.50 in  
 Width: 5.20 in  
 Colors: 11  
 Colorway: Colorway 1  
 Zoom: 1:1

Machine format: Tajima  
 Color changes: 10  
 Stops: 11  
 Trims: 239  
 Appliqués: 0  
 Left: 63.2 mm  
 Right: 68.9 mm  
 Up: 78.1 mm  
 Down: 87.0 mm  
 EndX: 0.00 in  
 EndY: 0.00 in  
 Area 33.82 in<sup>2</sup>  
 Max stitch: 11.1 mm  
 Min stitch: 0.0 mm  
 Max jump: 7.0 mm  
 Total thread: 861.97ft  
 Total bobbin: 261.97ft

Stop Sequence:

#	N#	Color	St.	Code	Name	Chart
1.	5		4,529		R20 G87 B138	
2.	8		2,972		R118 G162 B204	
3.	1		3,974		R27 G25 B148	
4.	6		2,216		R3 G1 B77	
5.	9		8,926	9	White	Default
6.	2		3,044		R130 G130 B130	
7.	7		3,475		R64 G39 B133	
8.	3		3,493		R129 G105 B227	
9.	4		4,850		R212 G71 B0	
10.	12		3,290	12	Orange	Default
11.	28		22,672	8	Black	Default

# Production Worksheet

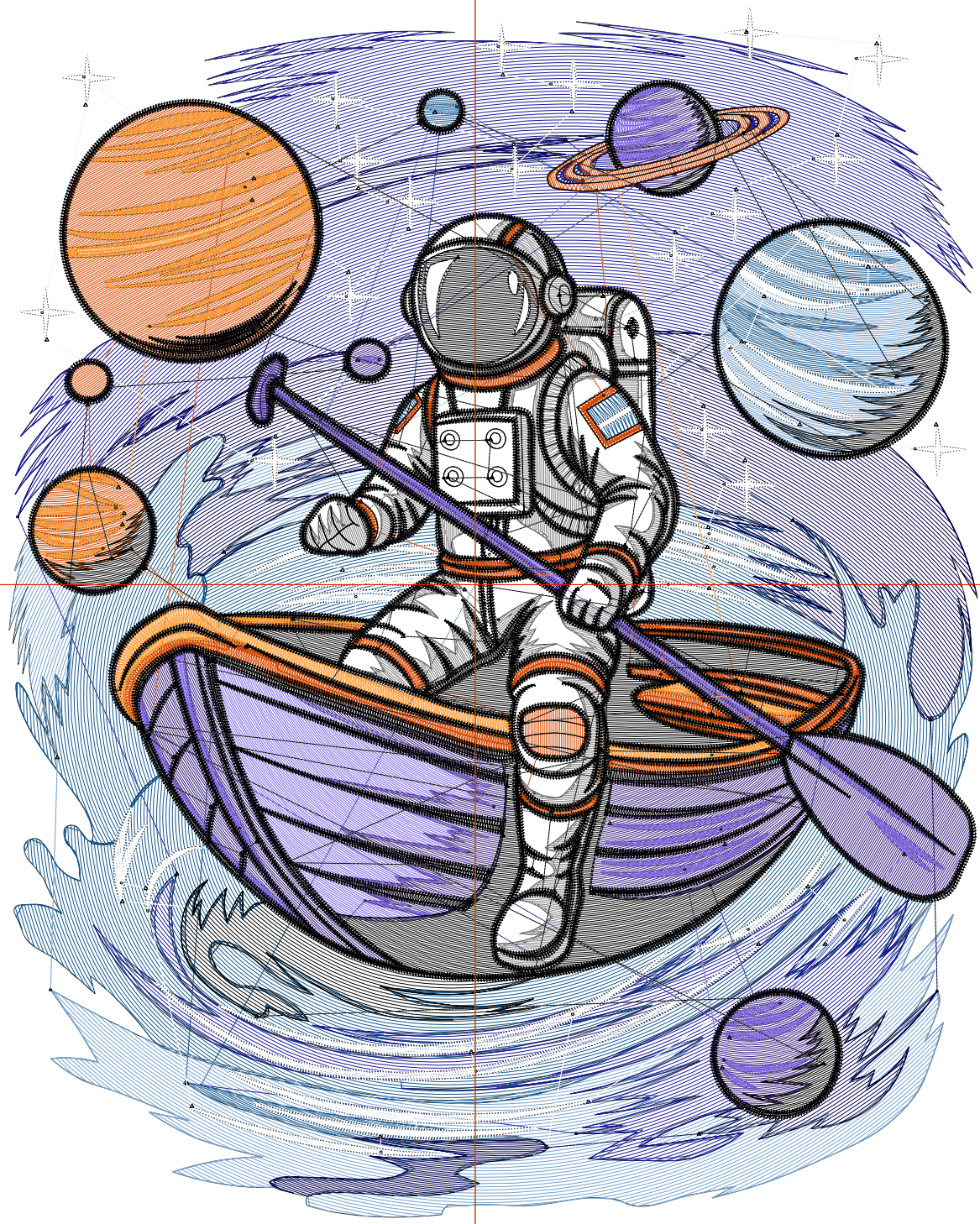
Wilcom EmbroideryStudio - Designing



Design: **6**

Title:

Stitches: 74,602  
Height: 7.50 in  
Width: 6.00 in  
Colors: 11  
Colorway: Colorway 1  
Zoom: 1:1



# Production Worksheet

Wilcom EmbroideryStudio - Designing



Design: **6**

Title:

Stitches: 74,602  
 Height: 7.50 in  
 Width: 6.00 in  
 Colors: 11  
 Colorway: Colorway 1  
 Zoom: 1:1

Machine format: Tajima  
 Color changes: 10  
 Stops: 11  
 Trims: 251  
 Appliqués: 0  
 Left: 73.4 mm  
 Right: 79.0 mm  
 Up: 90.8 mm  
 Down: 99.6 mm  
 EndX: 0.00 in  
 EndY: 0.00 in  
 Area 44.97 in<sup>2</sup>  
 Max stitch: 7.0 mm  
 Min stitch: 0.0 mm  
 Max jump: 7.0 mm  
 Total thread: 1053.24ft  
 Total bobbin: 331.92ft

Stop Sequence:

#	N#	Color	St.	Code	Name	Chart
1.	5		5,472		R20 G87 B138	
2.	8		3,543		R118 G162 B204	
3.	1		4,939		R27 G25 B148	
4.	6		2,715		R3 G1 B77	
5.	9		10,390	9	White	Default
6.	2		3,643		R130 G130 B130	
7.	7		4,231		R64 G39 B133	
8.	3		4,110		R129 G105 B227	
9.	4		5,821		R212 G71 B0	
10.	12		3,771	12	Orange	Default
11.	28		25,965	8	Black	Default

# Production Worksheet

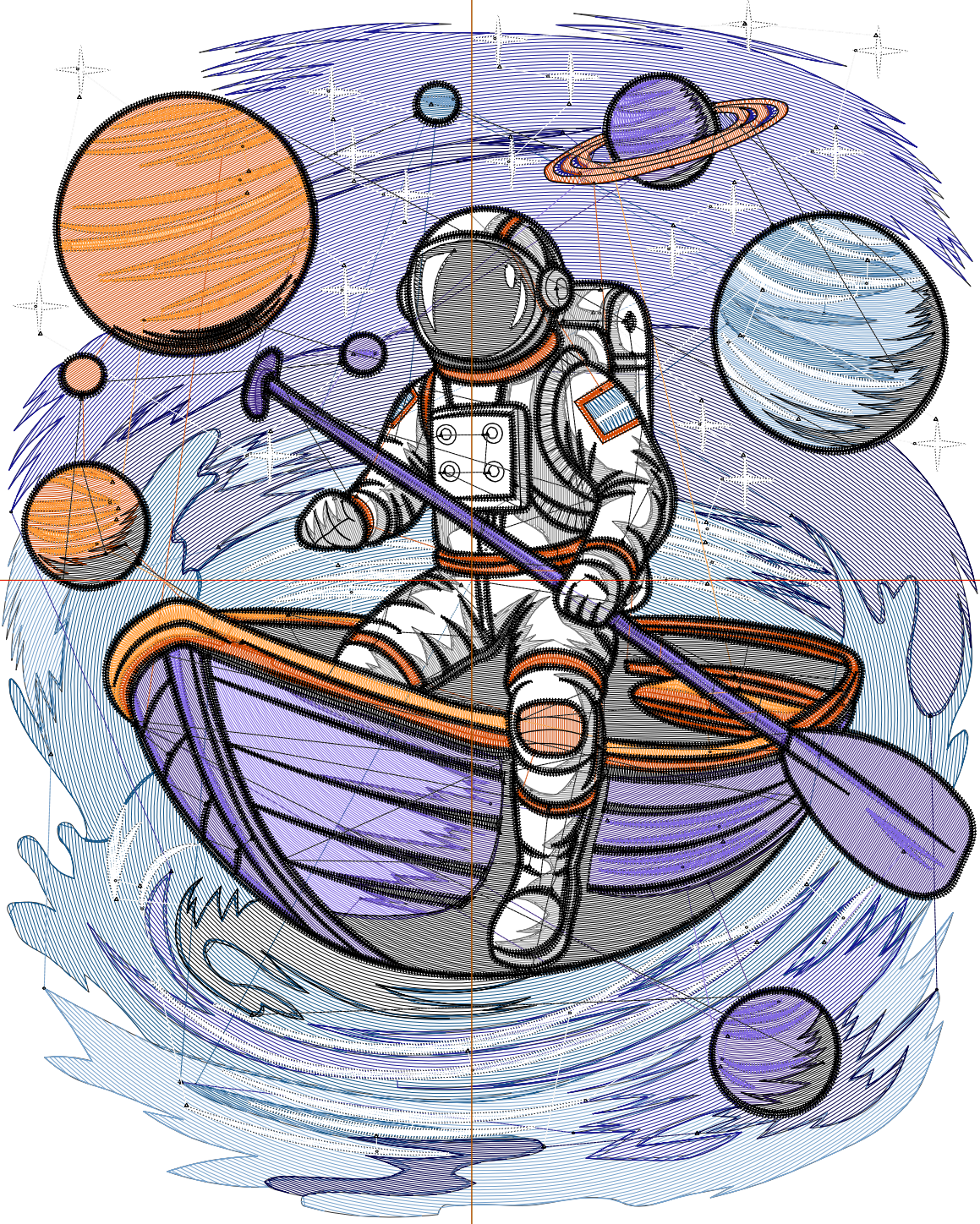
Wilcom EmbroideryStudio - Designing



Design: 7

Title:

Stitches: 74,602  
Height: 7.50 in  
Width: 6.00 in  
Colors: 11  
Colorway: Colorway 1  
Zoom: 1:1



# Production Worksheet

Wilcom EmbroideryStudio - Designing



Design: **7**

Title:

Stitches: 74,602  
 Height: 7.50 in  
 Width: 6.00 in  
 Colors: 11  
 Colorway: Colorway 1  
 Zoom: 1:1

Machine format: Tajima  
 Color changes: 10  
 Stops: 11  
 Trims: 251  
 Appliqués: 0  
 Left: 73.4 mm  
 Right: 79.0 mm  
 Up: 90.8 mm  
 Down: 99.6 mm  
 EndX: 0.00 in  
 EndY: 0.00 in  
 Area 44.97 in<sup>2</sup>  
 Max stitch: 7.0 mm  
 Min stitch: 0.0 mm  
 Max jump: 7.0 mm  
 Total thread: 1053.24ft  
 Total bobbin: 331.92ft

Stop Sequence:

#	N#	Color	St.	Code	Name	Chart
1.	5		5,472		R20 G87 B138	
2.	8		3,543		R118 G162 B204	
3.	1		4,939		R27 G25 B148	
4.	6		2,715		R3 G1 B77	
5.	9		10,390	9	White	Default
6.	2		3,643		R130 G130 B130	
7.	7		4,231		R64 G39 B133	
8.	3		4,110		R129 G105 B227	
9.	4		5,821		R212 G71 B0	
10.	12		3,771	12	Orange	Default
11.	28		25,965	8	Black	Default

# Production Worksheet

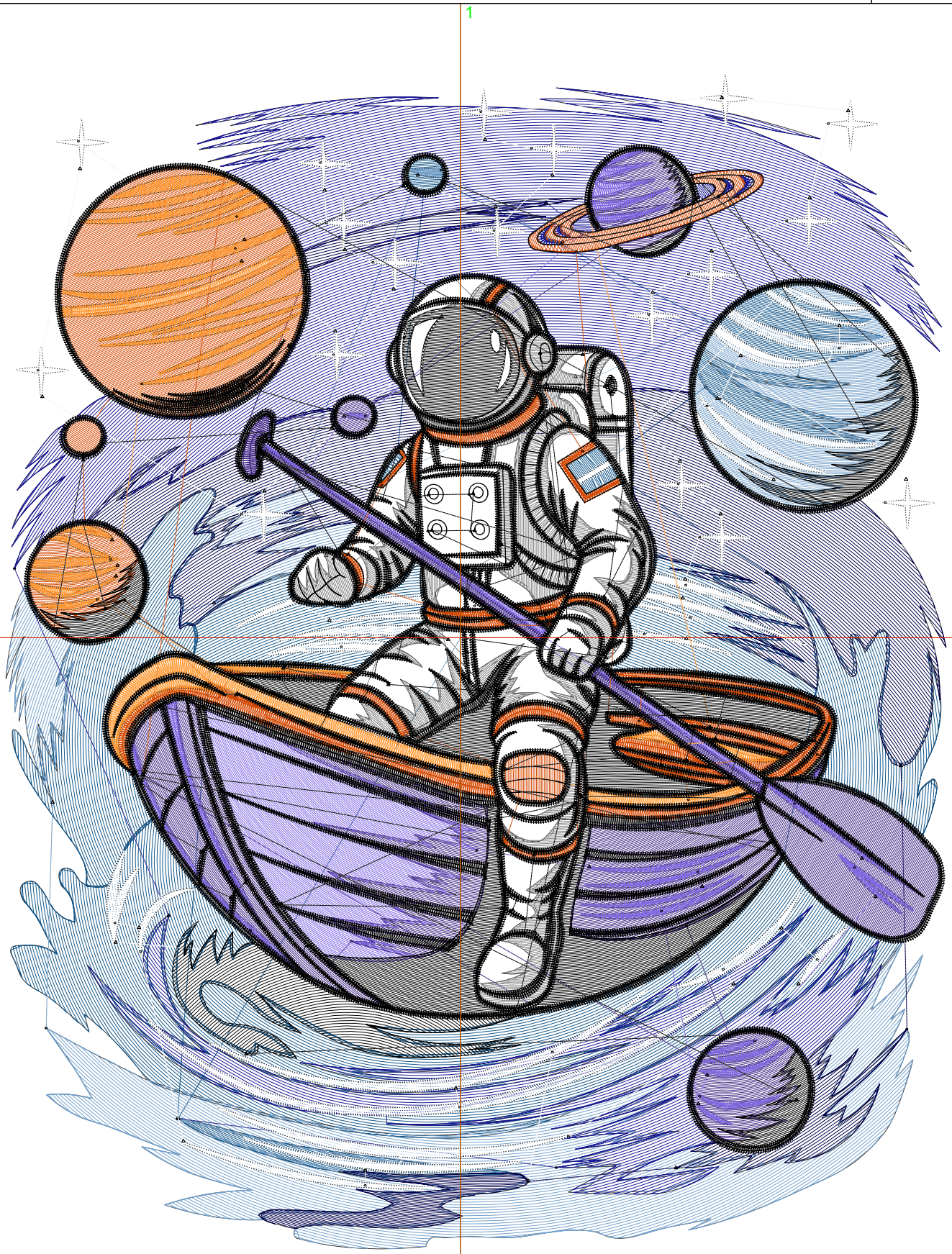
Wilcom EmbroideryStudio - Designing



Design: 8

Title:

Stitches: 87,245  
Height: 8.50 in  
Width: 6.80 in  
Colors: 11  
Colorway: Colorway 1  
Zoom: 1:1



# Production Worksheet

Wilcom EmbroideryStudio - Designing



Design: **8**

Title:

Stitches: 87,245  
 Height: 8.50 in  
 Width: 6.80 in  
 Colors: 11  
 Colorway: Colorway 1  
 Zoom: 1:1

Machine format: Tajima  
 Color changes: 10  
 Stops: 11  
 Trims: 265  
 Appliqués: 0  
 Left: 83.4 mm  
 Right: 89.3 mm  
 Up: 103.5 mm  
 Down: 112.3 mm  
 EndX: 0.00 in  
 EndY: 0.00 in  
 Area 57.77 in<sup>2</sup>  
 Max stitch: 7.0 mm  
 Min stitch: 0.0 mm  
 Max jump: 7.0 mm  
 Total thread: 1269.32ft  
 Total bobbin: 410.81ft

Stop Sequence:

#	N#	Color	St.	Code	Name	Chart
1.	5		6,612		R20 G87 B138	
2.	8		4,348		R118 G162 B204	
3.	1		6,112		R27 G25 B148	
4.	6		3,238		R3 G1 B77	
5.	9		11,762	9	White	Default
6.	2		4,363		R130 G130 B130	
7.	7		5,110		R64 G39 B133	
8.	3		4,804		R129 G105 B227	
9.	4		6,734		R212 G71 B0	
10.	12		4,294	12	Orange	Default
11.	28		29,866	8	Black	Default