

Production Worksheet

Wilcom EmbroideryStudio - Designing



Design: **5**

Title:

Stitches: 34,019
 Height: 5.50 in
 Width: 4.72 in
 Colors: 5
 Colorway: Colorway 1
 Zoom: 1:1



Machine format: Tajima
 Color changes: 4
 Stops: 5
 Trims: 108
 Appliqués: 0
 Left: 60.6 mm
 Right: 59.4 mm
 Up: 69.3 mm
 Down: 70.4 mm
 EndX: 0.00 in
 EndY: 0.00 in
 Area: 25.97 in²
 Max stitch: 10.0 mm
 Min stitch: 0.0 mm
 Max jump: 6.9 mm
 Total thread: 461.63ft
 Total bobbin: 140.31ft

Stop Sequence:

#	N#	Color	St.	Code	Name	Chart
1.	4		4,794		R128 G88 B58	
2.	3		3,762		R41 G105 B102	
3.	1		4,500		R0 G54 B0	
4.	8		6,146	8	Black	Default
5.	5		14,815		R107 G128 B110	

Production Worksheet

Wilcom EmbroideryStudio - Designing



Design: **6**

Title:

Stitches: 41,077
Height: 6.50 in
Width: 5.59 in
Colors: 5
Colorway: Colorway 1
Zoom: 1:1



Production Worksheet

Wilcom EmbroideryStudio - Designing



Design: **6**

Title:

Stitches: 41,077
 Height: 6.50 in
 Width: 5.59 in
 Colors: 5
 Colorway: Colorway 1
 Zoom: 1:1

Machine format: Tajima
 Color changes: 4
 Stops: 5
 Trims: 125
 Appliqués: 0
 Left: 71.7 mm
 Right: 70.3 mm
 Up: 82.1 mm
 Down: 83.1 mm
 EndX: 0.00 in
 EndY: 0.00 in
 Area 36.37 in²
 Max stitch: 9.3 mm
 Min stitch: 0.0 mm
 Max jump: 6.9 mm
 Total thread: 584.50ft
 Total bobbin: 185.67ft

Stop Sequence:

#	N#	Color	St.	Code	Name	Chart
1.	4		5,863		R128 G88 B58	
2.	3		4,747		R41 G105 B102	
3.	1		5,571		R0 G54 B0	
4.	8		7,726	8	Black	Default
5.	5		17,168		R107 G128 B110	

Production Worksheet

Wilcom EmbroideryStudio - Designing



Design: **7**

Title:

Stitches: 48,451
Height: 7.50 in
Width: 6.45 in
Colors: 5
Colorway: Colorway 1
Zoom: 1:1



Production Worksheet

Wilcom EmbroideryStudio - Designing



Design: **7**

Title:

Stitches: 48,451
 Height: 7.50 in
 Width: 6.45 in
 Colors: 5
 Colorway: Colorway 1
 Zoom: 1:1

Machine format: Tajima
 Color changes: 4
 Stops: 5
 Trims: 149
 Appliqués: 0
 Left: 82.7 mm
 Right: 81.2 mm
 Up: 94.8 mm
 Down: 95.8 mm
 EndX: 0.00 in
 EndY: 0.00 in
 Area 48.43 in²
 Max stitch: 10.8 mm
 Min stitch: 0.0 mm
 Max jump: 6.9 mm
 Total thread: 718.16ft
 Total bobbin: 236.20ft

Stop Sequence:

#	N#	Color	St.	Code	Name	Chart
1.	4		7,018		R128 G88 B58	
2.	3		5,725		R41 G105 B102	
3.	1		6,728		R0 G54 B0	
4.	8		9,339	8	Black	Default
5.	5		19,639		R107 G128 B110	

Production Worksheet

Wilcom EmbroideryStudio - Designing



Design: **8**

Title:

Stitches: 56,749
Height: 8.50 in
Width: 7.30 in
Colors: 5
Colorway: Colorway 1
Zoom: 1:1



Production Worksheet

Wilcom EmbroideryStudio - Designing



Design: **8**

Title:

Stitches: 56,749
 Height: 8.50 in
 Width: 7.30 in
 Colors: 5
 Colorway: Colorway 1
 Zoom: 1:1

Machine format: Tajima
 Color changes: 4
 Stops: 5
 Trims: 171
 Appliqués: 0
 Left: 93.2 mm
 Right: 92.1 mm
 Up: 107.5 mm
 Down: 108.5 mm
 EndX: 0.00 in
 EndY: 0.00 in
 Area 62.04 in²
 Max stitch: 12.1 mm
 Min stitch: 0.0 mm
 Max jump: 7.0 mm
 Total thread: 873.12ft
 Total bobbin: 295.77ft

Stop Sequence:

#	N#	Color	St.	Code	Name	Chart
1.	4		8,327		R128 G88 B58	
2.	3		6,785		R41 G105 B102	
3.	1		8,035		R0 G54 B0	
4.	8		11,506	8	Black	Default
5.	5		22,094		R107 G128 B110	

Production Worksheet

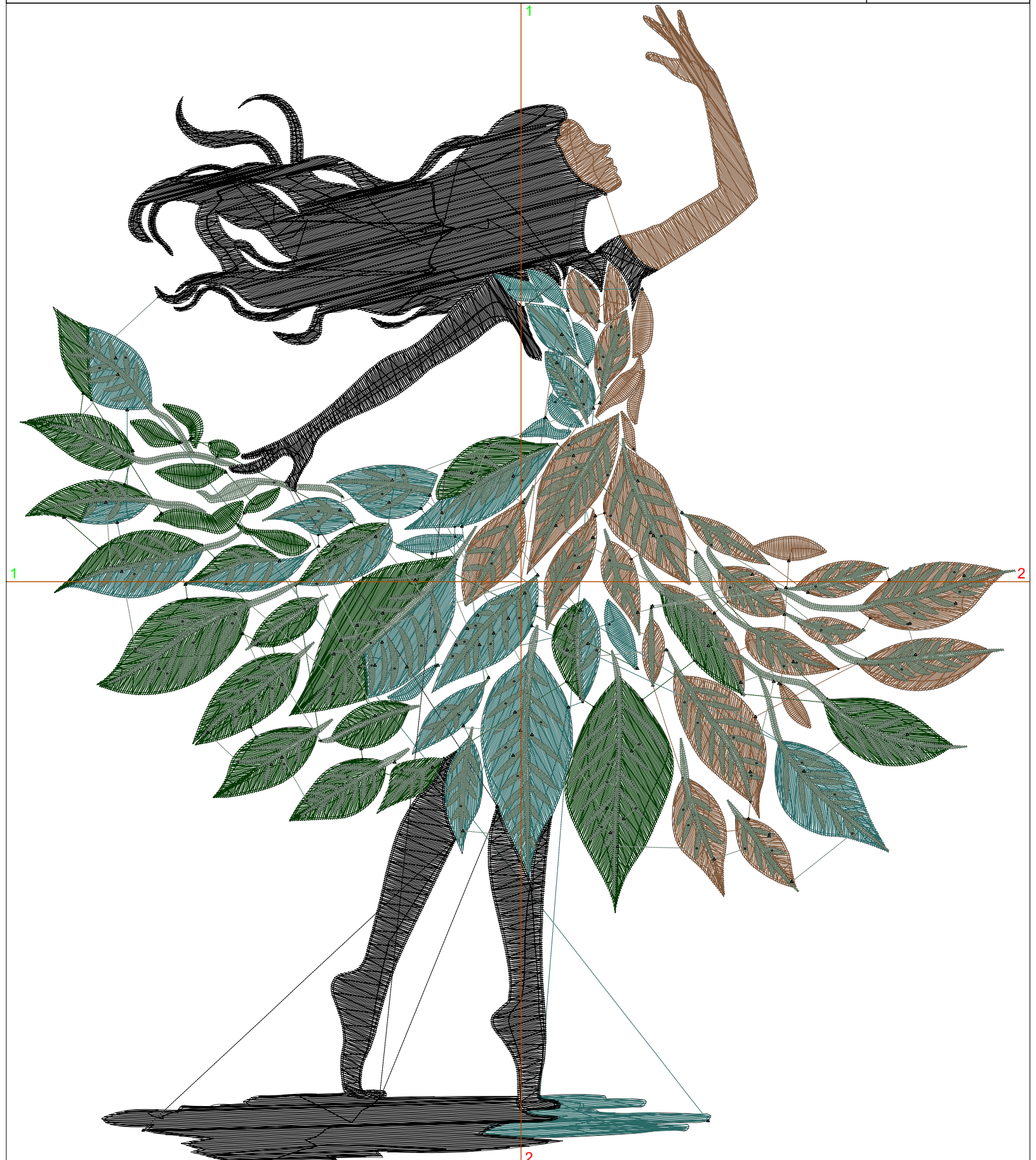
Wilcom EmbroideryStudio - Designing



Design: **9**

Title:

Stitches: 65,138
Height: 9.50 in
Width: 8.17 in
Colors: 5
Colorway: Colorway 1
Zoom: 1:1



Production Worksheet

Wilcom EmbroideryStudio - Designing



Design: **9**

Title:

Stitches: 65,138
Height: 9.50 in
Width: 8.17 in
Colors: 5
Colorway: Colorway 1
Zoom: 1:1

Machine format: Tajima
Color changes: 4
Stops: 5
Trims: 196
Appliqués: 0
Left: 104.4 mm
Right: 103.0 mm
Up: 120.2 mm
Down: 121.2 mm
EndX: 0.00 in
EndY: 0.00 in
Area 77.61 in²
Max stitch: 7.0 mm
Min stitch: 0.0 mm
Max jump: 7.0 mm
Total thread: 1031.04ft
Total bobbin: 356.73ft

Stop Sequence:

#	N#	Color	St.	Code	Name	Chart
1.	4		9,684		R128 G88 B58	
2.	3		8,019		R41 G105 B102	
3.	1		9,435		R0 G54 B0	
4.	8		13,323	8	Black	Default
5.	5		24,675		R107 G128 B110	

Production Worksheet

Wilcom EmbroideryStudio - Designing



Design: **10**

Title:

Stitches: 73,716
Height: 10.50 in
Width: 9.03 in
Colors: 5
Colorway: Colorway 1
Zoom: 1:1

1 1
1 1



2 2
2 2

3 3
3 3

Production Worksheet

Wilcom EmbroideryStudio - Designing



Design: **10**

Title:

Stitches: 73,716
Height: 10.50 in
Width: 9.03 in
Colors: 5
Colorway: Colorway 1
Zoom: 1:1

1 1
1 1



3 3
3 3

4 4
4 4

1





Production Worksheet

Wilcom EmbroideryStudio - Designing



Design: **10**

Title:

Stitches: 73,716
 Height: 10.50 in
 Width: 9.03 in
 Colors: 5
 Colorway: Colorway 1
 Zoom: 1:1

Machine format: Tajima
 Color changes: 4
 Stops: 5
 Trims: 210
 Appliqués: 0
 Left: 115.4 mm
 Right: 113.9 mm
 Up: 132.9 mm
 Down: 133.9 mm
 EndX: 0.00 in
 EndY: 0.00 in
 Area 94.84 in²
 Max stitch: 8.9 mm
 Min stitch: 0.0 mm
 Max jump: 6.9 mm
 Total thread: 1201.94ft
 Total bobbin: 424.65ft

Stop Sequence:

#	N#	Color	St.	Code	Name	Chart
1.	4		11,088		R128 G88 B58	
2.	3		9,260		R41 G105 B102	
3.	1		10,884		R0 G54 B0	
4.	8		15,350	8	Black	Default
5.	5		27,132		R107 G128 B110	